



Recall Campaign

NHTSA#: 16V-748

Job Code

9901326

TC#: 2016-xxx

Flat Rate

2.5 hr

Date of Publication November 2016

REQUIRES PARTS ORDER

Action Required

Replace axle, wheel wells, and Federal Labels

Model / Serial Numbers

2017 Jay Sport Camping Trailers

H12S0100 - 0213

H12Z0167 - 0193

Parts Kit Contents 16V-748JT

Note: Kit can only be ordered using the order form included with this bulletin.

1 Axle 2 wheel wells
1 Axle Kit 20 blk headed screws
2 Crimp Sleeve: 4 ft. putty tape
2 Blk Boots

Shop Supplies / Tools

screwgun with #2 square bit
impact driver
impact socket (deepwell) 13/16"
open end / box end wrench 11/16"
wire cutters / strippers / crimpers
flat blade screwdriver
putty stick

INSTRUCTIONS

AXLE REMOVAL



1 **Fig 1:** Raise the trailer using jackstands. Wheels should be completely off the ground.

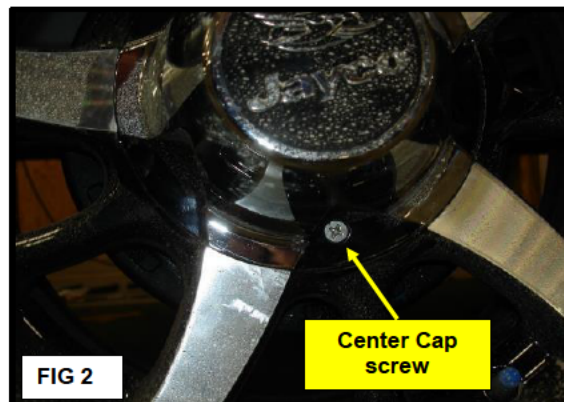


Fig 2: Remove center caps from both wheels. Center caps are held on with a single phillips screw.



2 **Fig 3:** Remove all lugs on both wheels. Use the impact driver and 13/16" impact socket. Remove both wheels from axle.

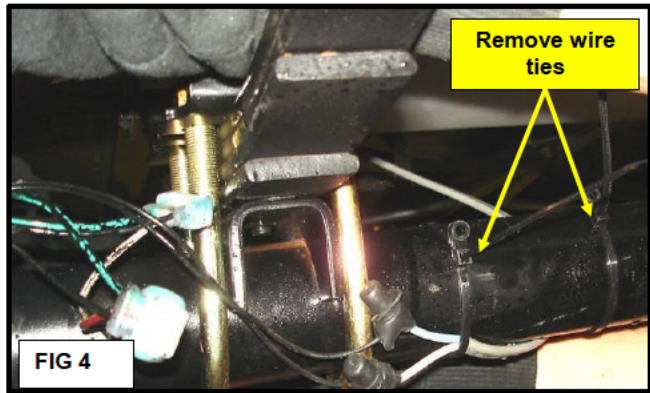
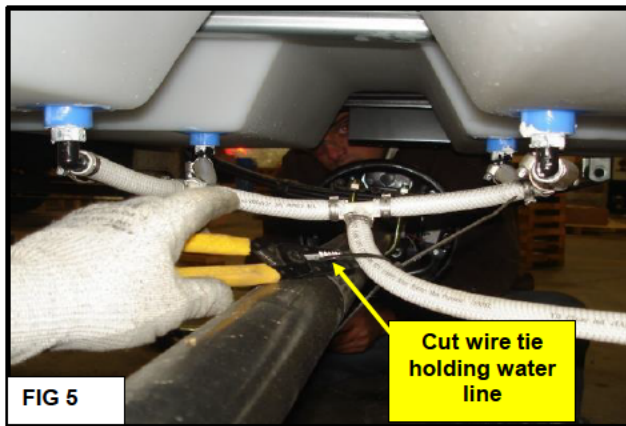


Fig 4: Cut any wire ties holding the brake wiring to the axle.



3 **Fig 5:** Cut wire tie holding the water line to the axle.

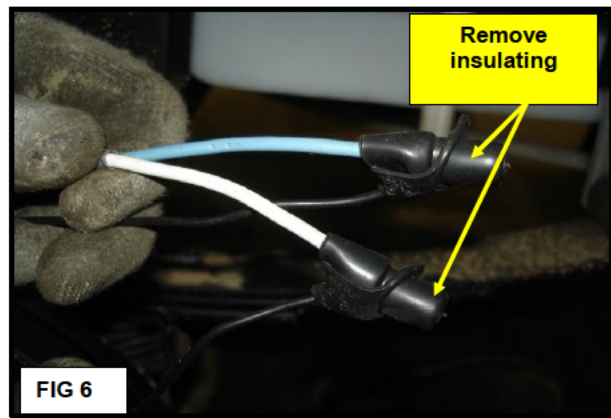
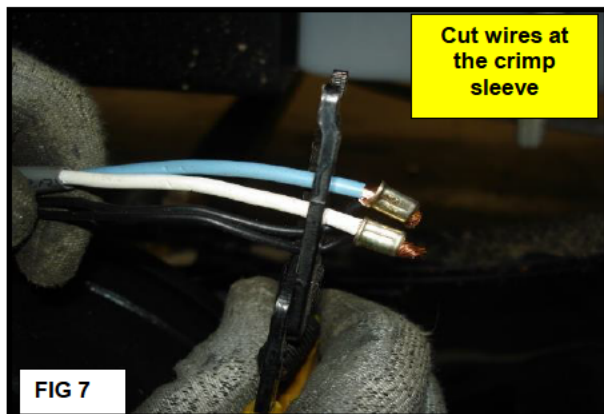


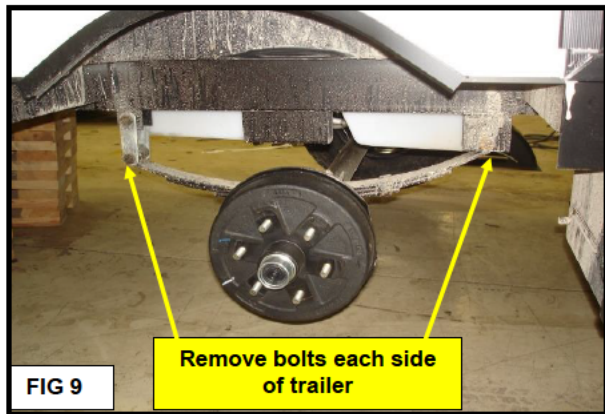
Fig 6: Remove the rubber insulating caps from the brake wiring on the **OFF DOOR SIDE** of the trailer.



4 **Fig 7:** Cut the brake wiring just behind the copper crimp sleeves. Cut the blue, white and both black wires.



Fig 8: A floor jack should be used to support the axle as the mounting bolts are being removed.



5 **Fig 9:** Remove the spring mounting bolts on both sides of the trailer.

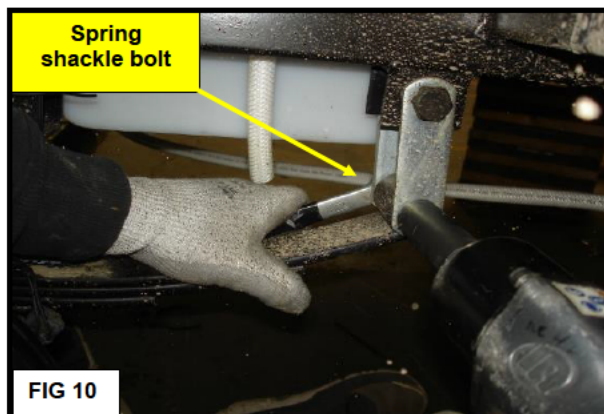
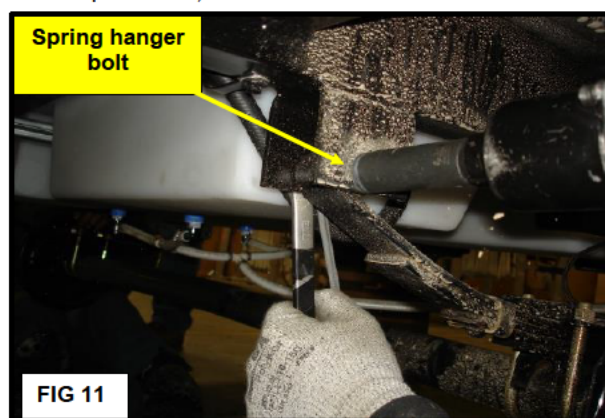


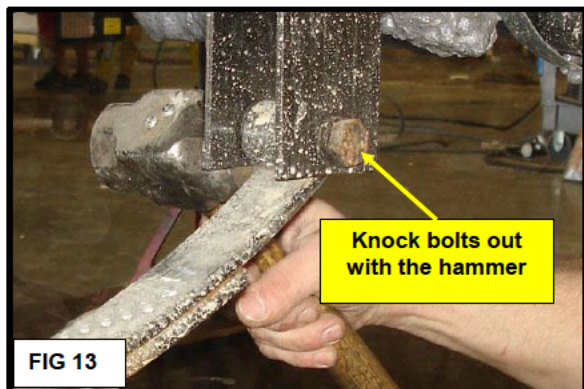
Fig 10: Remove the spring shackle bolts from both sides of the trailer. Use the impact driver, 13/16" socket and 11/16" wrench.



6 **Fig 11:** Remove the spring hanger bolts from both sides of the trailer. Use the impact driver, 13/16" socket and 11/16" wrench

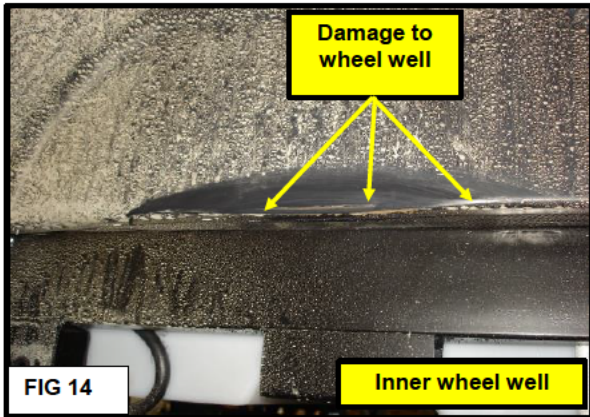


Fig 12: Bolts have a knurled area under the head (as shown). This prevents the bolt from turning or falling out once it has been seated.



7 **Fig 13:** These bolts must be driven out of the brackets with a hammer. Strike the bolts on the nut or thread end of the bolt.
DISCARD THE OLD HARDWARE. Do not re-use.
 Once all 4 of the bolts have been removed, lower the axle to the ground.

REPLACING THE WHEEL WELLS



8 Fig 14: Wheel wells (on both sides of trailer) have damage from the tires, replace them.

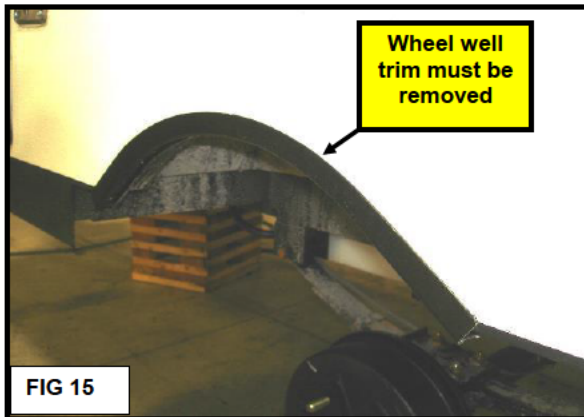
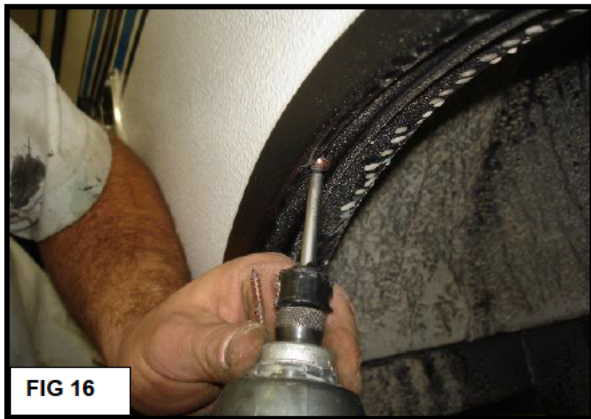


Fig 15: Remove the wheel well trim from both sides.



9 Fig 16: Remove approximately 6 screws from the wheel well trim.



Fig 17: Use a screwdriver to pry the end of the wheel well trim loose.



10 Fig 18: Pull the wheel well trim off of both sides of the trailer.

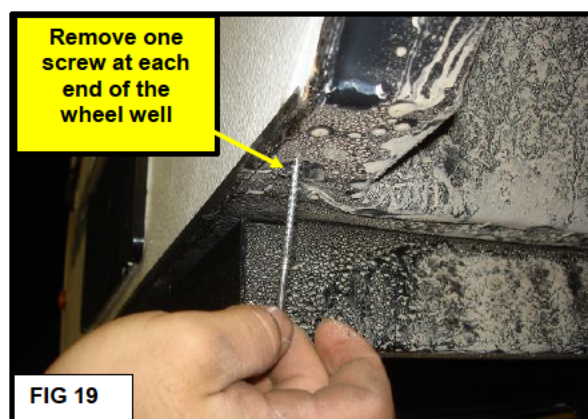
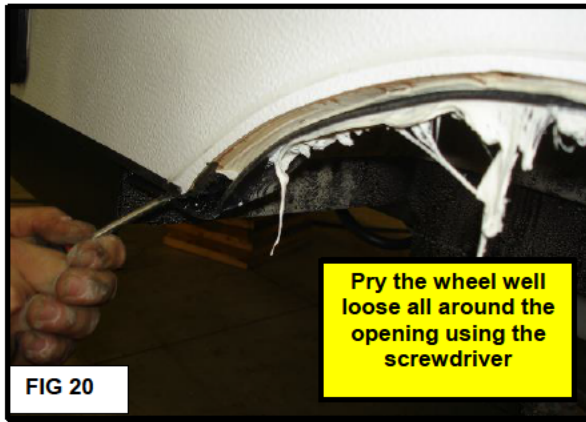


Fig 19: There may be 2 additional screws that need to be removed. Check at each end of the wheel well trim, some trailers will have 1 long screw at each end. Remove these screws and save them. They will be re-used later.



11 **Fig 20:** Use the screwdriver and begin prying the plastic wheel well out away from the trailer body.

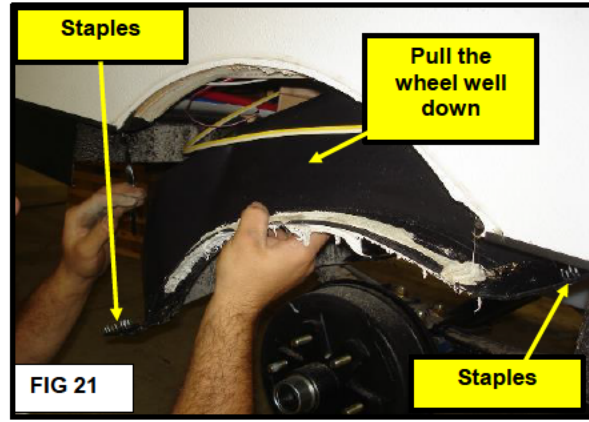
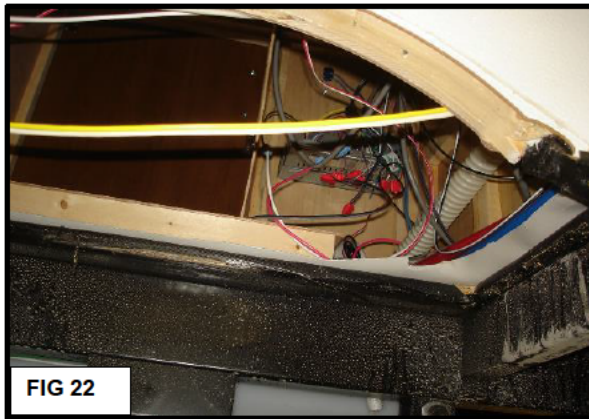


Fig 21: Grab the wheel well pulling it down. There are staples at each end, but will break loose.



12 **Fig 22:** Wheel well removed from the trailer.

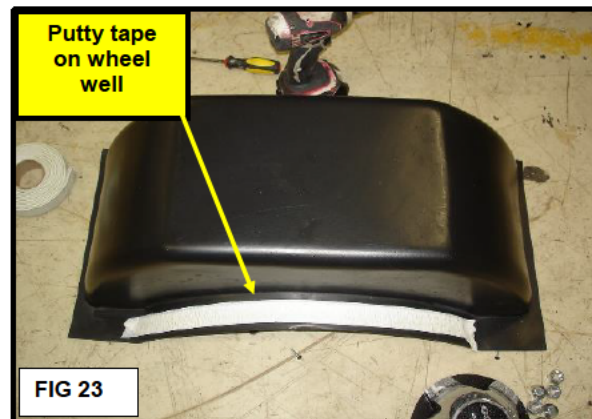


Fig 23: Install putty tape (approximately 2 ft) on the curved portion of the wheel well. Peel off the backing tape.



13 **Fig 24:** Put the new wheel well up inside the opening of the trailer. Any wiring should be tucked up above the wheel well as you put it in place.

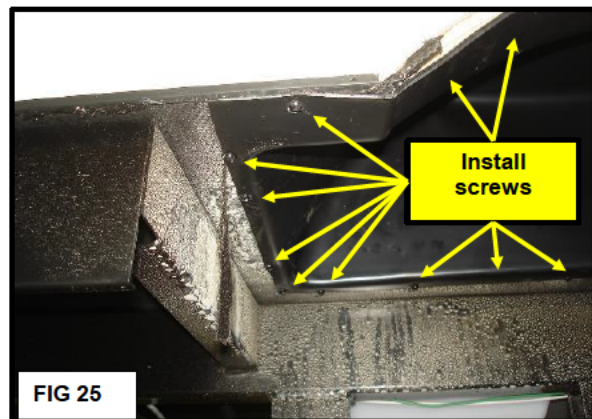
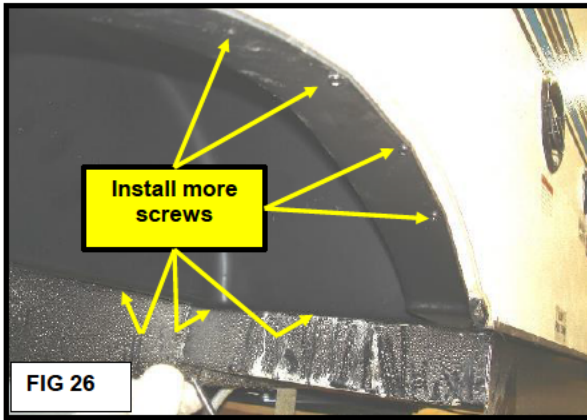


Fig 25: Install #8 x 3/4" screws around the perimeter of the wheel well to secure it in place. Install approximately 25 of these screws equidistant around the wheel well lip, and the curved upper lip.



14 Fig 26: Install #8 x 3/4" screws along the lip of the wheel well opening.

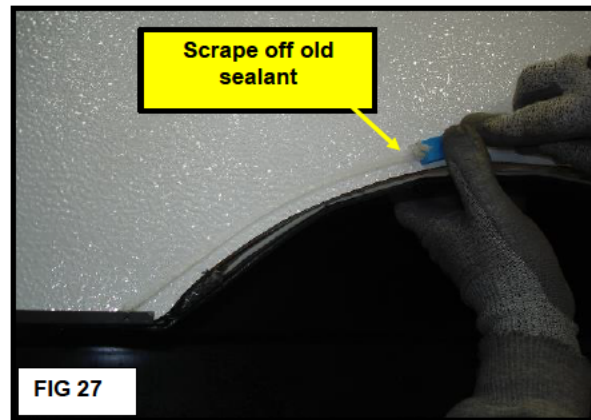
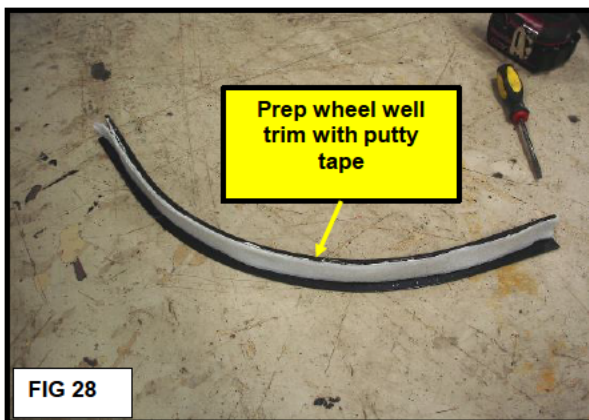


Fig 27: Remove the old sealant on the outside of the trailer with a plastic putty stick tool.



15 Fig 28: Install putty tape (approximately 2 ft) on wheel well trim piece.

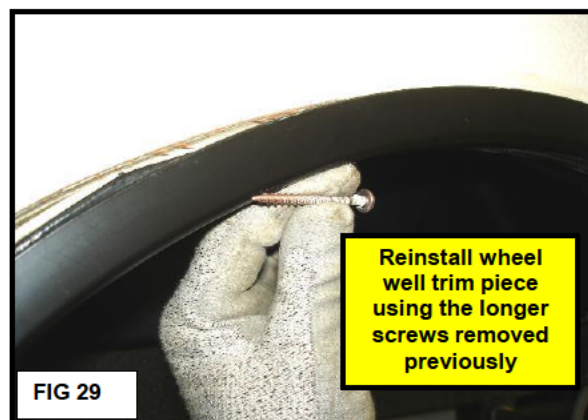
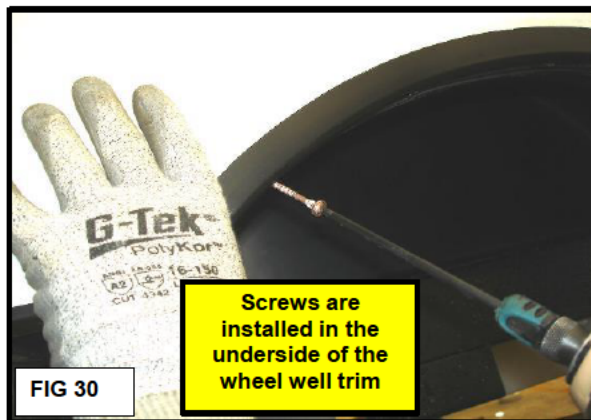


Fig 29: Install the wheel well trim piece. Re-use the longer screws which were removed previously.



16 Fig 30: Install screws on the underside of the wheel well trim.

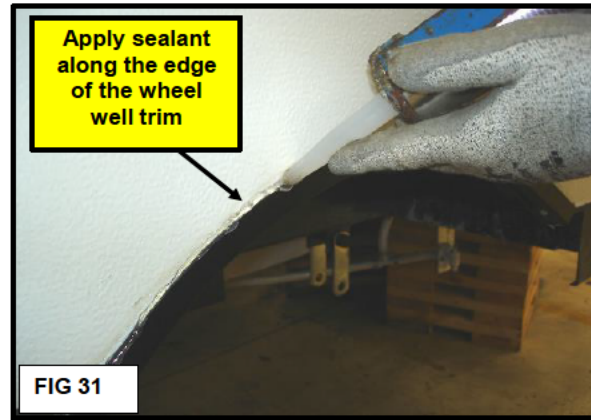
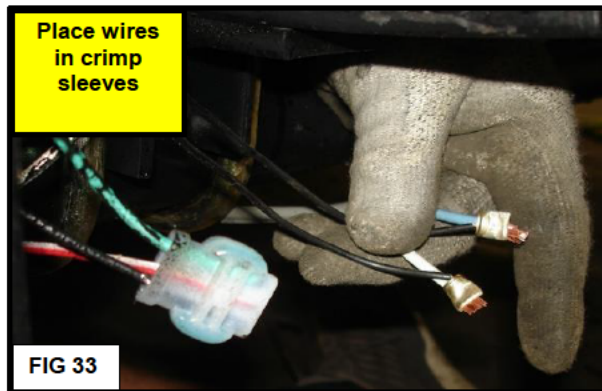
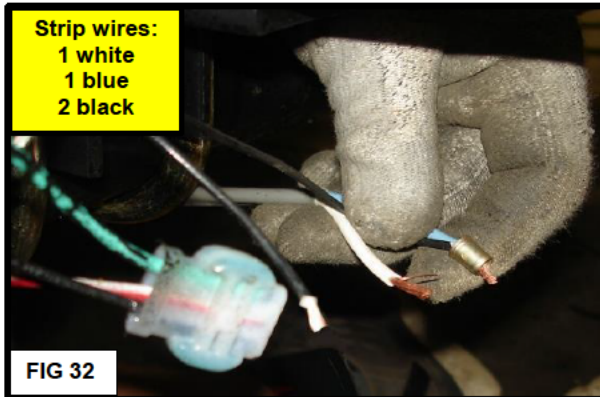


Fig 31: Apply a bead of clear silicon sealant along the edge of the wheel well trim. Spray a mist of water over the sealant and use your finger and run it along the edge of the trim to smooth the sealant.

INSTALLING NEW AXLE & BRAKE WIRING

17 Place new axle under the trailer. Brake wires on the OFF DOOR SIDE.



18 Fig 32: Strip insulation approximately 1/2" from the white, blue, and two black wires.

Fig 33: Insert the blue wire with one black wire into a copper sleeve and crimp the sleeve on the wires. Insert the white wire with one black wire into a copper sleeve and crimp the sleeve on the wires.



19 Fig 34: Place black rubber insulator boots over the crimp sleeves.

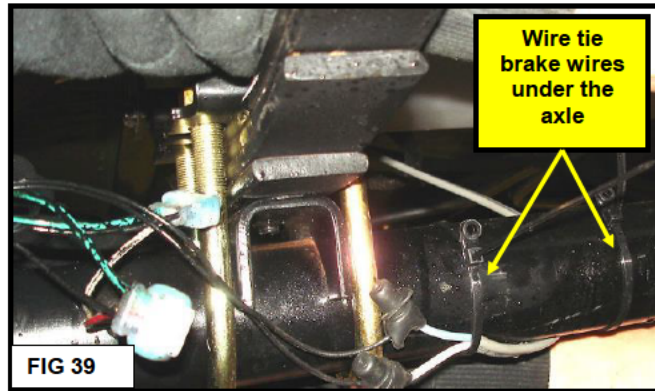
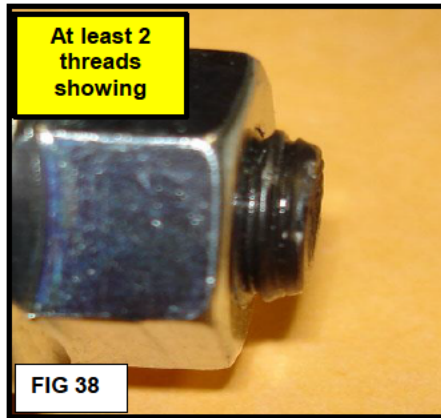
Fig 35: Install new bolts and nuts in the spring hangers for the axles on both sides of trailer.



20 Fig 36: Install new bolts and nuts in spring shackle bracket on both sides of trailer.

Fig 37: Bolt heads will not seat properly because of the knurled area under the bolt head. The impact driver will not pull the bolt heads flush, they must be driven in place with a hammer.

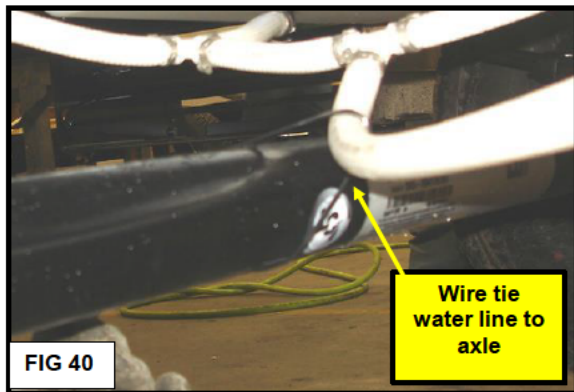
BOLT HEADS MUST BE FLUSH TO THE BRACKETS. (hanger & shackle brackets)



21 **Fig 38:** Once the bolt heads have been seated, tighten the nuts with the impact driver. There must be at least 2 threads showing through the face of the nuts.

TORQUE THE 4 SPRING HANGER BOLTS TO 45 FT LBS

Fig 39: Brake wiring should be directed under the axle, and secured with wire ties.



22 **Fig 40:** Secure the water line to the axle with a wire tie. Do not pull the water line tight to the axle.

Fig 41: Replace the wheels on the axle. Use the impact driver and the 13/16" socket. Replace the center caps on the wheels.

TORQUE THE LUG NUTS TO 90-120 FT LBS

Lower the trailer and remove the jackstands.

CHANGING THE FEDERAL CERTIFICATION, AND TIRE LABELS

Remove existing label(s)

1. Locate the appropriate label(s) on the outside off door side (road side) front of the unit. Remove the existing Federal Certification Label and Tire Label
2. Using isopropyl alcohol and a shop rag, remove any adhesive residue from the surface where the original label had been. Allow the area to dry for at least 30 seconds.

Apply new label(s)

3. Remove the protective back from the new labels. Align the new label in the same location of the original label and apply it to the surface. Remove any air bubbles from the label.
NOTE: Do not attempt to remove or adjust the label once it has come into contact with the surface. Doing so may damage the label or cause it not to adhere properly to the surface. IF A LABEL IS DAMAGED OR WILL NOT PROPERLY ADHERE TO THE SURFACE, A NEW LABEL MUST BE ORDERED.

The labels below do NOT reflect this recall remedy. They are just examples of the type of labels involved.

TIRE AND LOADING INFORMATION
RENSEIGNEMENTS SUR LES PNEUS ET LE CHARGEMENT

The weight of cargo should not exceed **772 kg** or **1612 lbs.**
 Le poids du chargement ne doit jamais dépasser **772 kg** ou **1612 lbs.**

TIRE PNEU	SIZE DIMENSIONS	COLD TIRE PRESSURE PRESSION DES PNEUS A FROID	SEE OWNER'S MANUAL FOR ADDITIONAL INFORMATION
FRONT AVANT	ST225/75R15D	449 KPA, 65 PSI	SEE OWNER'S MANUAL FOR ADDITIONAL INFORMATION VOIR LE MANUEL DE L'USAGER POUR PLUS DE RENSEIGNEMENTS
REAR ARRIERE	ST225/75R15D	449 KPA, 65 PSI	
SPARE DE SECOURS	ST225/75R15D	449 KPA, 65 PSI	

Tire Label

*** 1UJBJ0E ***

RESP MFR: **Jayco, Inc.** DATE: 08/10
 FABRICANT RESP: **Jayco, Inc.**

V.I.N./N.I.V. **1UJBJ0E**

GWR: /PNBV KG **5500 2497** PRESS./COLD INFL. PRESS./GONFL FROID

SIZE/DIMENSION

GAWR/PNBE KG	TIRE/PNEU	RIMS/JANTE	PSI/LPC	KPA
2900 1317 FRONT/DEVANT	ST185/80R13C 13 X 4.50	JJ 50		345
0000 INT/CENTRAL				0000
2900 1317 REAR/ARRIERE	ST185/80R13C 13 X 4.50	JJ 50		0345

TYPE OF VEHICLE / TYPE DE VEHICULE: TRAILER/REMORQUE

THIS VEHICLE CONFORMS TO ALL APPLICABLE U.S. FEDERAL MOTOR VEHICLE SAFETY STANDARDS AND MOTOR VEHICLE SAFETY REGULATIONS IN EFFECT ON THE DATE OF MANUFACTURE SHOWN ABOVE.

CE VEHICULE CONFORME A TOUTES LES NORMES QUI LUI SONT APPLICABLES EN VERTU DU REGLEMENT SUR LA SECURITE DE VEHICULES AUTOMOBILES DU CANADA ET DES ETATS UNIS EN VIGUEUR A LA DATE DE SA FABRICATION CI-DESSUS.

Federal Certification Label

Instructions for Canadian Data Sheet - Canadian Units Only

1. Locate the existing **Canadian Data Sheet** label on the inside of the cabinet door under the kitchen sink. Using a DRY rag, wipe off the surface of the existing label to remove any dust or dirt from the surface. Do not use any wet cleaner on the existing label as it may absorb the liquid adversely affecting the adhesive on the new label. **DO NOT** attempt to remove the existing label.
2. Remove the protective back from the new Canadian Data Sheet label. Align the label with the existing label and apply it over the top of the original label.

NOTE: Do not attempt to remove or adjust the label once it has come into contact with the surface. Doing so may damage the label or cause it not to adhere properly to the surface. IF A LABEL IS DAMAGED OR WILL NOT PROPERLY ADHERE TO THE SURFACE, A NEW LABEL MUST BE ORDERED.

DO NOT REMOVE PAS ENLEVER

REGISTRATIONAL VEHICLE SPECIFICATION NAMEPLATE / REGISTRATIONAL POUR VEHICULE REGISTRÉ

MANUFACTURER/UNION/INT. JAYCO INC. DATE OF MANUFACTURE: 8/21/11
 DATE DE FABRICATION

FACTORY ADDRESS/ADRESSE DE L'USINE: 301 S. Main Middlebury, IN 46548

TRUCK BODY: MODEL NO.: 2111 JAY FREIGHT SELECT 1111 SERIAL NO.: 11111111 NO DE SÉRIE

QAT CERTIFICATION LABEL No.: ÉTIQUETTE DE CERTIFICATION QAT NOMBRE

NOTE: (1) This specification plate and the exterior QAT label provides the only evidence of certification. Cette plaque réglementaire ainsi que l'étiquette extérieure qui conditionne les séries provient de la certification QAT.
 (2) QAT Certification covers the systems listed below only when installed by the vehicle manufacturer. La certification QAT englobe les installations indiquées ci-dessous uniquement si leur placement est effectué par le fabricant du véhicule.
 (3) Any addition or modification to factory installed systems must be authorized by the appropriate provincial or municipal authorities having jurisdiction. Toute addition ou modification aux installations doit être effectuée par les autorités provinciales ou municipales compétentes.
 (4) Only under the heading "FACTORY INSTALLED APPLIANCES" indicates appliances not factory installed. Seulement sous la rubrique "Appareils installés à l'usine" indique les appareils non installés à l'usine.

NAME / NOM	MODEL / MODÈLE	POWER / Puissance	Electrical / Électrique
1. STOVE / POÊLE	1000000000	120 Volts	60 Amps
2. WATER HEATER / CHAUFFE-EAU	1000000000	120 Volts	30 Amps
3. RANGE / CUISINIÈRE	1000000000	120 Volts	30 Amps
4. REFRIGERATOR / RÉFRIGÉRATEUR	1000000000	120 Volts	15 Amps
5. AIR CONDITIONER / CLIMATISSEUR	1000000000	120 Volts	15 Amps
6. MICROWAVE OVEN / MICRO-ONDE	1000000000	120 Volts	15 Amps

ELECTRICAL SYSTEM: INSTALLATION ÉLECTRIQUE: 120 Volts 60 Hertz 30 Ampères

PLUMBING SYSTEM: Plumbage system tested at 60 PSI (400psi) INSTALLATION DE PLUMBAGE: Installation sous pression approuvée à 60 PSI (400 psi)

WARNING: Avertissement

GAS SYSTEM: INSTALLATION DE GAZ

TO ENSURE A SUPPLY OF FRESH AIR TO OCCUPANTS, OPEN VENTILATORS WHEN FUEL-BURNING RANGE AND/OR LIGHTS ARE IN OPERATION. POUR ASSURER UNE OCCUPANCE SÛRE, OUVRIER LES VENTILATEURS QUAND QUE FONCTIONNENT LA CUISINIÈRE OU LES LAMPES À GAZ.

THIS SYSTEM IS DESIGNED FOR USE WITH PROPANE ONLY. DO NOT CONNECT NATURAL GAS TO THIS SYSTEM. CETTE INSTALLATION EST CONÇUE POUR LE PROPANE SEULEMENT. NE PAS L'ALIMENTER AU GAZ NATUREL.

BEFORE TURNING ON PROGRAM: AVANT LA MISE EN SERVICE

(a) ALL COOKING APPLIANCES ARE CERTIFIED FOR PROPANE AND ARE EQUIPPED WITH CORRECT BURNER ORIFICES. S'ASSURER QUE LES APPAREILS SONT CERTIFIÉS POUR LE PROPANE ET MONTÉS D'ORIFICES DE BRÛLURE APPROPRIÉS.

(b) RANGE CERTAIN ALL PROGRAMS CONNECTED ARE TIGHT BY TIGHTENING RANGE AND/OR APPLIANCE VALVES AND TIGHTENING ALL GAS CONNECTIONS. S'ASSURER QUE LES RACCORDEMENTS DU PROPANE, LA FERMETURE DE TOUTES LES VANNES D'APPAREILS ET L'ORIFICE DE TOUTES LES BRÛLURES SONT SÛRES.

AFTER TURNING ON PROGRAM: APRÈS LA MISE EN SERVICE

(a) LIGHT ALL PIPES: ALLUMER TOUTES LES VENTILATEURS.

(b) ALL CONNECTIONS INCLUDING RANGE AT THE APPLIANCE, APPLIANCE AND CYLINDER SHOULD BE LEAK-TIGHT (SPECIFICALLY WITH HEAVY WATER OF THE OCCUPANT). REFER TO A LICENSED PLUMBER OR OTHER PLUMBING PROFESSIONAL FOR LEAK-TESTING AND CORRECTION. S'ASSURER QUE TOUTES LES RACCORDEMENTS SONT SÛRES, Y COMPRIS LES RACCORDEMENTS À LA CUISINIÈRE ET LES BRÛLURES, ET LES BRÛLURES ET LES BRÛLURES À LA CUISINIÈRE. NE JAMAIS DE SERVICE D'UN ALLOCATEUR DE SÈCLE PLUMBING POUR LA DÉTECTION DES FUITES.

(c) DO NOT LEAVE SYSTEM TURNED ON OR CONTAINERS CONNECTED UNTIL THE SYSTEM HAS BEEN PROVEN TO BE FREE OF ANY LEAKS. NE PAS LAISSER LE RACCORDEMENT OUVERT, NI LES RÉCIPROQUES RACCORDEMENT, AVANT D'AVOIR COMPLÈTEMENT L'ÉPREUVE D'ÉTANCHÉITÉ DU PROPANE DE L'INSTALLATION.

(d) COOKING APPLIANCES SHOULD NOT BE USED FOR SPACE HEATING. LES APPAREILS DE CUISINE NE DOIVENT PAS ÊTRE UTILISÉS POUR LE CHAUFFAGE DES LOCAUX.

(e) WHEN THE CONTAINERS ARE DISCONNECTED THE PROPANE SUPPLY LINE SHOULD BE CAPPED OR SECURED. LORSQU'ILS SONT DÉCONNECTÉS, L'ALIMENTATION DU PROPANE DOIT ÊTRE SÛREMENT OU SCÉLÉE.

VEHICULAR SYSTEM: RÉSULTATS - IT IS RECOMMENDED THAT VEHICLES EQUIPPED BE CONSIDERED AS REGULATIONS APPLICABLE IN AREAS INTO WHICH THIS UNIT MAY BE MOVED ESPECIALLY IN REGARDS TO MAXIMUM ALLOWABLE LOADS AND WEIGHTS.

INSTALLATION VÉHICULAIRE: INSTALLATION - IL EST RECOMMANDÉ DE CONSIDÉRER LES UNITÉS ÉQUIPÉES EN VERTU DES RÈGLEMENTS APPLICABLES DANS LES ZONES OÙ L'UNITÉ POURRAIT ÊTRE MOUVÉE, EN PARTICULIÈRE EN CE QUI CONCERNE LES MONTRES ET LES MONTRES PERMIS.

Gross Vehicle Weight Rating (GVWR) 5500 lb 2497 kg Poids brut maximal du remorquage (PBR) 5500 lb 2497 kg
 This vehicle requires a Class 4 Hitch for towing. Ce véhicule exige une attache de classe 4 pour le véhicule tracteur
 Tongue Load Range 375-600 lb 169-272 kg Capacité de Charge de Tiroir 375-600 lb 169-272 kg
 Minimum Tire Size & Ply Rating 875/80R13C Dimensions minimales des pneus et nombre de plis
 Recommended Cold Tire Inflation Pressure 32 psi 2.2 bar Pression recommandée pour le gonflage des pneus à froid