

**November 4, 2016**

05217 Version 3

## Safety Recall: Electric Parking Brake and VSA DTC U3000-49

Supersedes 16-090, dated October 15, 2016; See REVISION SUMMARY

### AFFECTED VEHICLES

Year	Model	Trim	VIN Range
2016	Civic	ALL	Check the iN VIN status for eligibility

### REVISION SUMMARY

Under REPAIR PROCEDURE, information was added to clarify how to confirm that the vehicle has been updated.

### BACKGROUND

There may be a communication error between the VSA system and the electric parking brake (EPB) if a customer applies the EPB **shortly after turning the vehicle to the off mode**. The BRAKE indicator may blink for about 15 seconds and the EPB may not apply. If the EPB does not apply, the vehicle could roll away, increasing the risk of a crash. Additionally, DTC U3000-49, ECU internal failure, may be stored.

NOTE: If the EPB is applied before the vehicle is turned to the off mode, the EPB will operate normally.

### CUSTOMER NOTIFICATION

Owners of affected vehicles will be sent a notification of this campaign.

Do an iN VIN status inquiry to make sure the vehicle is shown as eligible.

Some vehicles affected by this campaign may be in your new or used vehicle inventory. Federal law requires that all affected new vehicles be repaired before sale. In addition, failure to repair a vehicle subject to a recall or campaign may subject your dealership to claims or lawsuits from the customer or anyone else harmed as a result of such failure. In addition, state law may provide American Honda with the right to seek indemnification in any such claim or lawsuit. To see if a vehicle in inventory is affected by this recall, do a VIN status inquiry before selling it.

### CORRECTIVE ACTION

Update the VSA modulator control unit and do the VSA sensor neutral position memorization (ALL SENSOR), TPMS calibration, and clutch pedal stroke sensor zero point – learn (M/T only).

### WARRANTY CLAIM INFORMATION

Operation Number	Description	Flat Rate Time	Defect Code	Symptom Code	Template ID	Failed Part Number
4135A6	Update the VSA modulator control unit and do the VSA sensor neutral position memorization, TPMS calibration, and clutch pedal stroke sensor zero point (if applicable), then clear any stored DTCs	0.4 hr	6EP00	KC600	16-090A	57100-TBA-A14

**CUSTOMER INFORMATION:** The information in this bulletin is intended for use only by skilled technicians who have the proper tools, equipment, and training to correctly and safely maintain your vehicle. These procedures should not be attempted by “do-it-yourselfers,” and you should not assume this bulletin applies to your vehicle, or that your vehicle has the condition described. To determine whether this information applies, contact an authorized Honda automobile dealer.

## SOFTWARE INFORMATION

NOTE: Unnecessary or incorrect repairs resulting from a failure to update the i-HDS are not covered under warranty.  
i-HDS Software Version: **1.001.011 or later**

J2534 Software Information:

PC Application Version **1.0.1.15 or later**

Database update **29-SEP-2016 or later**

**Before beginning the repair, make sure that both the i-HDS and J2534 software are updated as listed above.**

**Do only the update listed in this service bulletin.**

**You cannot apply the updates with the MVCI as a standalone tool.** To update the vehicle you must use the MVCI or the DST-i interface in conjunction with the J2534 Rewrite PC application on the i-HDS.

For more information about updating the HDS, the MVCI, and vehicle systems, refer to Service Bulletin 01-023, *Updating Control Units/Modules*.

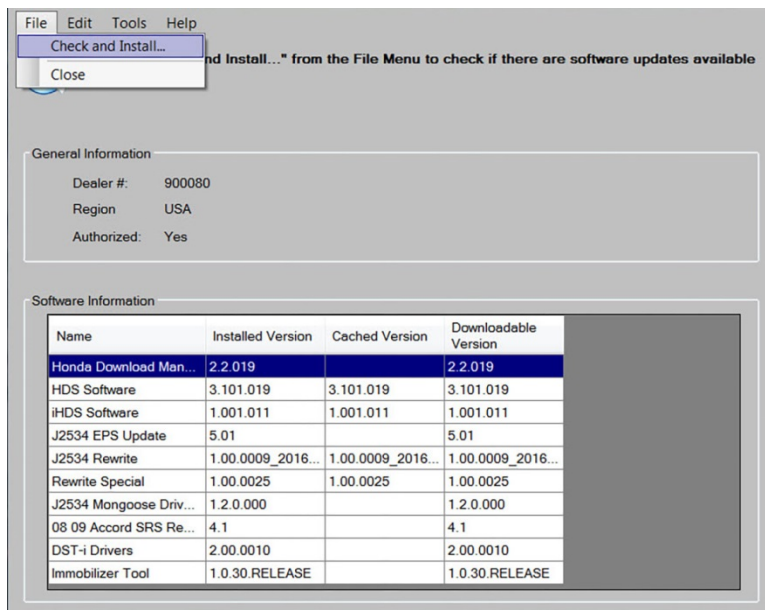
Year/Model	Software System	Program ID (or later)	Program P/N (or later)
2016 Civic with Honda Sensing	VSA	BAA560	57114-TBA-A56
2016 Civic without Honda Sensing	VSA	BAA060	57114-TBA-A06

To check the database update version on the i-HDS laptop, right click on the HDS Download Manager icon on the taskbar.



Select Open HDS Download Manager and use the **File** pull-down menu to select **Check and Install**.

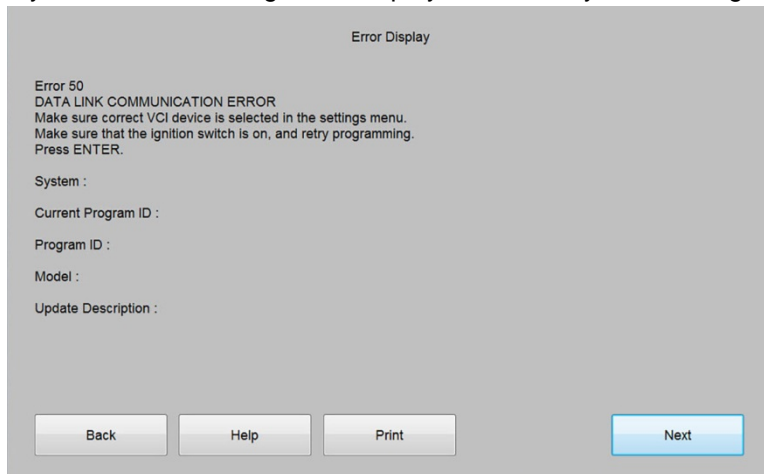
NOTE: If you are not connected to the internet, you will see an error message indicating the i-HDS can't check for updates; connect to the internet to make sure you have the latest i-HDS software.



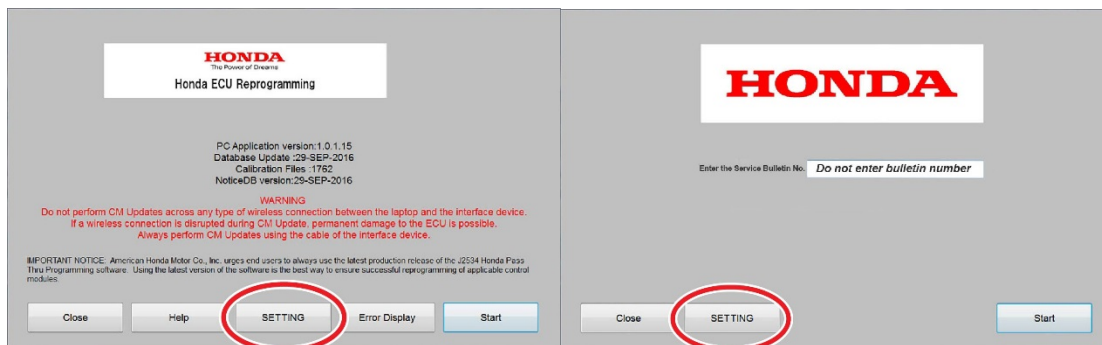
## REPAIR PROCEDURE

### NOTE:

- You can't update the vehicle using the MVCI as a standalone tool.
- **Do not** use the MongoosePro VCI tool.
- Make sure the 12 volt battery is fully charged before starting an update.
- Connect a fully charged jumper battery to the vehicle and leave it connected during the entire procedure to maintain steady voltage.
- Never turn the ignition to OFF or ACCESSORY during the update. If there is a problem with the update, leave the ignition turned to ON.
- To prevent VSA modulator control unit damage, do not operate anything electrical (headlights, audio system, brakes, A/C, power windows, door locks, etc.) during the update.
- If you see the following Error Display, check that you are using the correct tool (MVCI or DST-i) with the i-HDS.

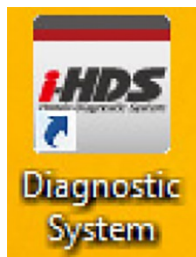


To change this, click on either of the SETTING selection buttons at the bottom of the J2534 initial screens as shown.

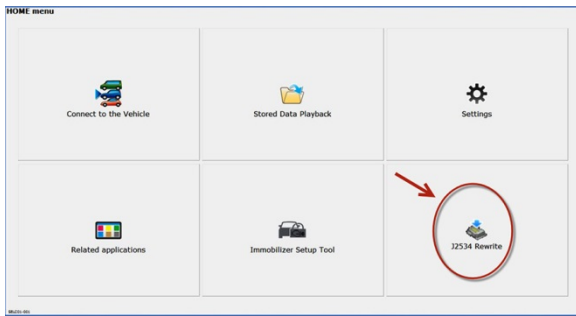


1. Make sure the parking brake is applied and the headlights are off.
2. Update the ABS/VSA software by selecting the i-HDS Diagnostic System icon. Refer to Service Bulletin 01-023, *Updating Control Units/ Modules*.

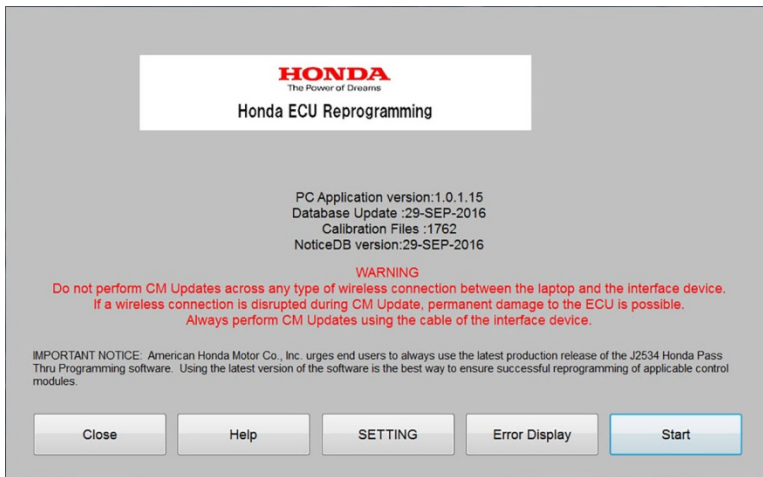
NOTE: **Do not use the Rewrite icon** on your desktop.



3. Select **J2534 Rewrite**.



4. Confirm the software is the same **or later** as listed in SOFTWARE INFORMATION.



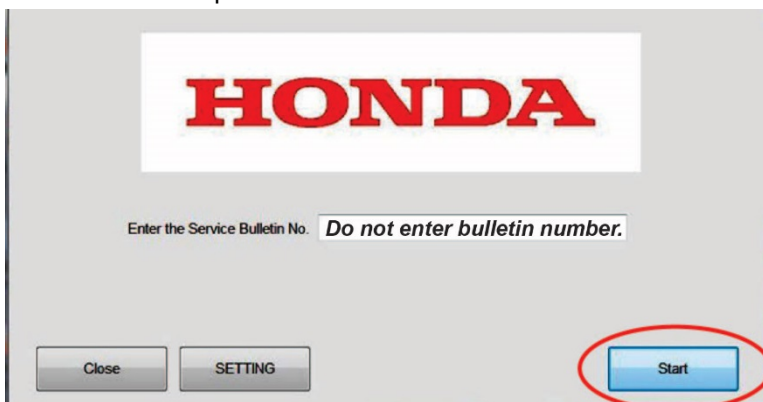
5. Select **Start**, then follow the screen prompts.

NOTE:

- **Don't enter a bulletin number.**
- If you receive a message that the vehicle has been already updated or that no update is available, check the VSA data list. The header should indicate one of the following numbers (or later).

57114-TBA-A56	57114-TBA-A06
---------------	---------------

- If the program part numbers do not match those listed above, the i-HDS software needs to be reinstalled. Contact the Special Tools Hotline at 800-346-6327 for assistance.



6. While the MVCI is updating the ABS/VSA software, set the tire pressures to the cold inflation values listed on the driver's doorjamb label.

7. Do the following procedures before returning the vehicle to the customer.

- VSA SENSOR NEUTRAL POSITION MEMORIZATION PROCEDURE
- CLUTCH PEDAL STROKE SENSOR ZERO POINT – LEARN (M/T ONLY)
- SPECIAL TPMS CALIBRATION USED ONLY AFTER SOFTWARE UPDATE
- DO AN ALL DTC CHECK AND CLEAR DTCS FROM ALL SYSTEMS

## VSA SENSOR NEUTRAL POSITION MEMORIZATION PROCEDURE

1. Set the steering wheel in the straight ahead position.
2. From **Honda Systems**, select **ABS/TCS/VSA**, then select **Adjustment**, and select **All Sensors**, then follow the screen prompts.

NOTE: Do not press the brake pedal during this procedure.

## CLUTCH PEDAL STROKE SENSOR ZERO POINT - LEARN (M/T ONLY)

1. Turn the vehicle to the ON mode without pressing the clutch pedal.
2. Wait for 2 seconds, then make sure that the VSA indicator goes OFF.

NOTE:

- If the VSA indicator goes OFF, the clutch pedal stroke sensor zero point learning is complete.
- If the VSA indicator blinks, the learning failed. Turn the vehicle to the OFF mode, and try again.

## SPECIAL TPMS CALIBRATION USED ONLY AFTER SOFTWARE UPDATE

NOTE:

- If the tire pressures were not already set, set them to the cold inflation values listed on the driver's doorjamb label.
- **It is not necessary to drive the vehicle** after doing the following calibration procedure. Calibration will complete as the customer drives the vehicle.

Perform TPMS calibration **three** times in a row to clear the old data. After the third calibration is finished, the TPMS indicator should come on within 10 seconds, and stay on for 1 second before going out.

There are three different methods of TPMS calibration depending on the vehicle trim.

For all vehicles:

1. Make sure the vehicle is stopped.
2. Make sure the transmission is in Park (CVT) or Neutral (M/T).
3. The vehicle is in the ON mode.

### LX vehicles without Honda sensing - TPMS button on the left lower dash

To calibrate the TPMS, press and hold the TPMS button until the low pressure indicator flashes, release it and wait 5 seconds, then press and hold the TPMS button a **second** time until the low pressure indicator flashes, release it and wait 5 seconds, then press and hold the TPMS button a **third** time until the low pressure indicator flashes, and release it.

After the third calibration is finished, the TPMS indicator should come on within 10 seconds, and stay on for 1 second, and then go out to confirm the system is calibrated.

### LX vehicles with Honda Sensing - Driver Information Interface

To calibrate the TPMS, press the Information button on the steering wheel, go to **Setting**.

Select **TPMS Calibration**, then select **Calibrate**, and wait 5 seconds, select **TPMS Calibration** and **Calibrate** a second time, and wait 5 seconds, then select **TPMS Calibration** and **Calibrate** a third time.

After the third calibration is finished, TPMS indicator should come on within 10 seconds, and stay on for 1 second, and then go out to confirm the system is calibrated.

### All EX and Touring vehicles - Display Audio Setting

To calibrate the TPMS using the audio system, select **Home**, then **Settings**, then **Vehicle**.

Select **TPMS Calibration**, then select **Calibrate**, and wait 5 seconds, select **TPMS Calibration** and **Calibrate** a second time, and wait 5 seconds, then select **TPMS Calibration** and **Calibrate** a third time.

After the third calibration is finished, the TPMS indicator should come on within 10 seconds, and stay on for 1 second, and then go out to confirm the system is calibrated.

## DO AN ALL DTC CHECK AND CLEAR DTCS FROM ALL SYSTEMS

Perform All DTC check and clear DTCs from all systems.

When you find DTCs, click & highlight on a DTC and then click the Tools button to go into that system, click DTCs and clear DTCs with the red erase button. Then exit, HDS will again perform All DTC Check. Continue until all systems no longer have any DTCs.

NOTE: **Updating the ABS/VSA software will set DTCs**, do not troubleshoot the DTCs unless they cannot be erased.

END