

TECHNICAL INSTRUCTIONS
FOR
SAFETY RECALL G0W
FRONT PASSENGER AIR BAG
CERTAIN 2016 MODEL YEAR PRIUS

Updated 01-14-2021

1-14-21

- **The scanning application process has been updated**

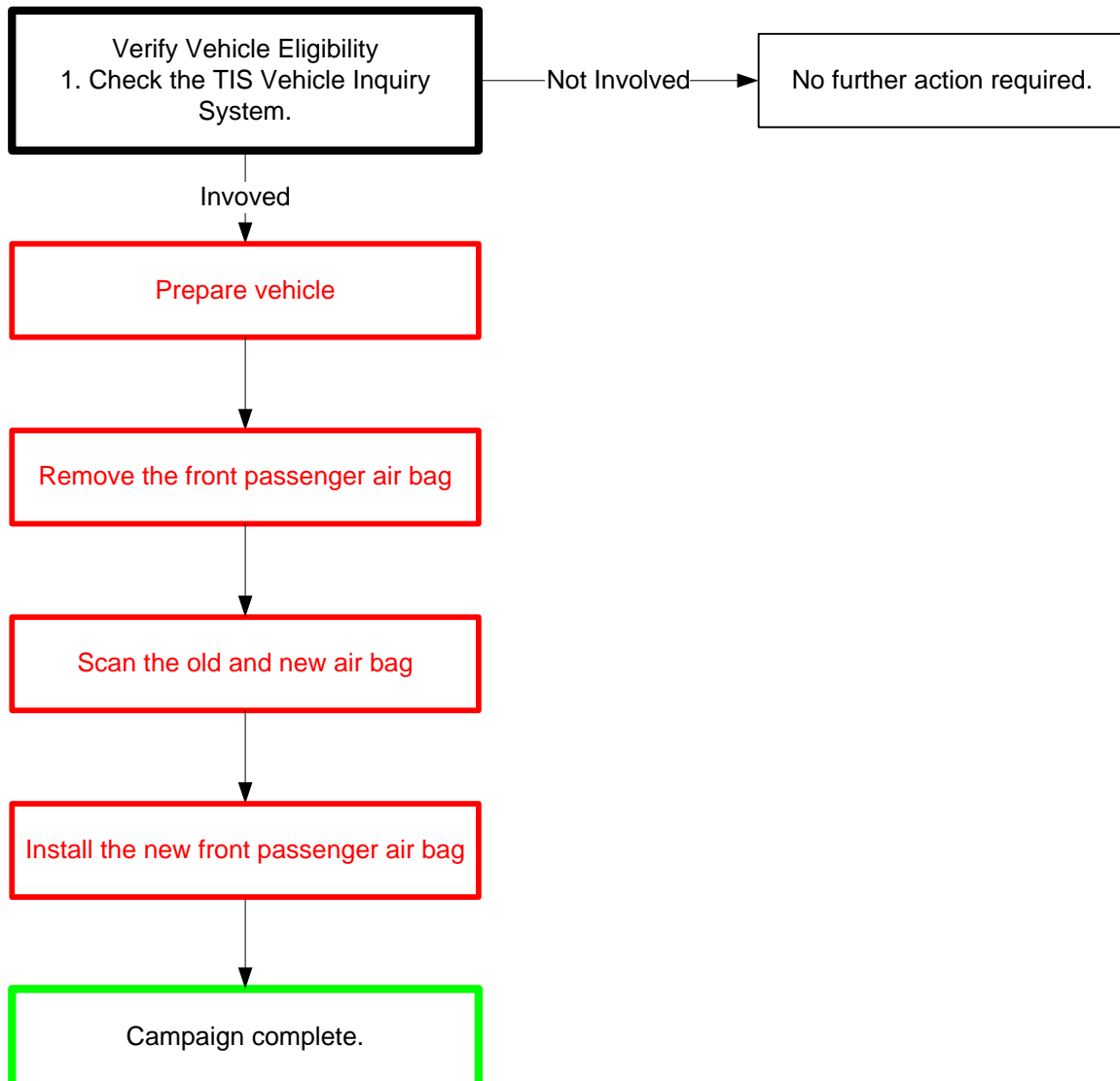
The repair quality of covered vehicles is extremely important to Toyota. All dealership technicians performing this repair are required to successfully complete the most current version of the E-Learning course “Safety Recall and Service Campaign Essentials”. To ensure that all vehicles have the repair performed correctly; technicians performing this repair are required to currently hold at least one of the following certification levels:

- **Toyota Expert (Electrical)**
- **Master**
- **Master Diagnostic Technicians**

It is the dealership’s responsibility to select technicians with the above certification level or greater to perform this repair. Carefully review your resources, the technician skill level, and ability before assigning technicians to this repair. It is important to consider technician days off and vacation schedules to ensure there are properly trained technicians available to perform this repair at all times.

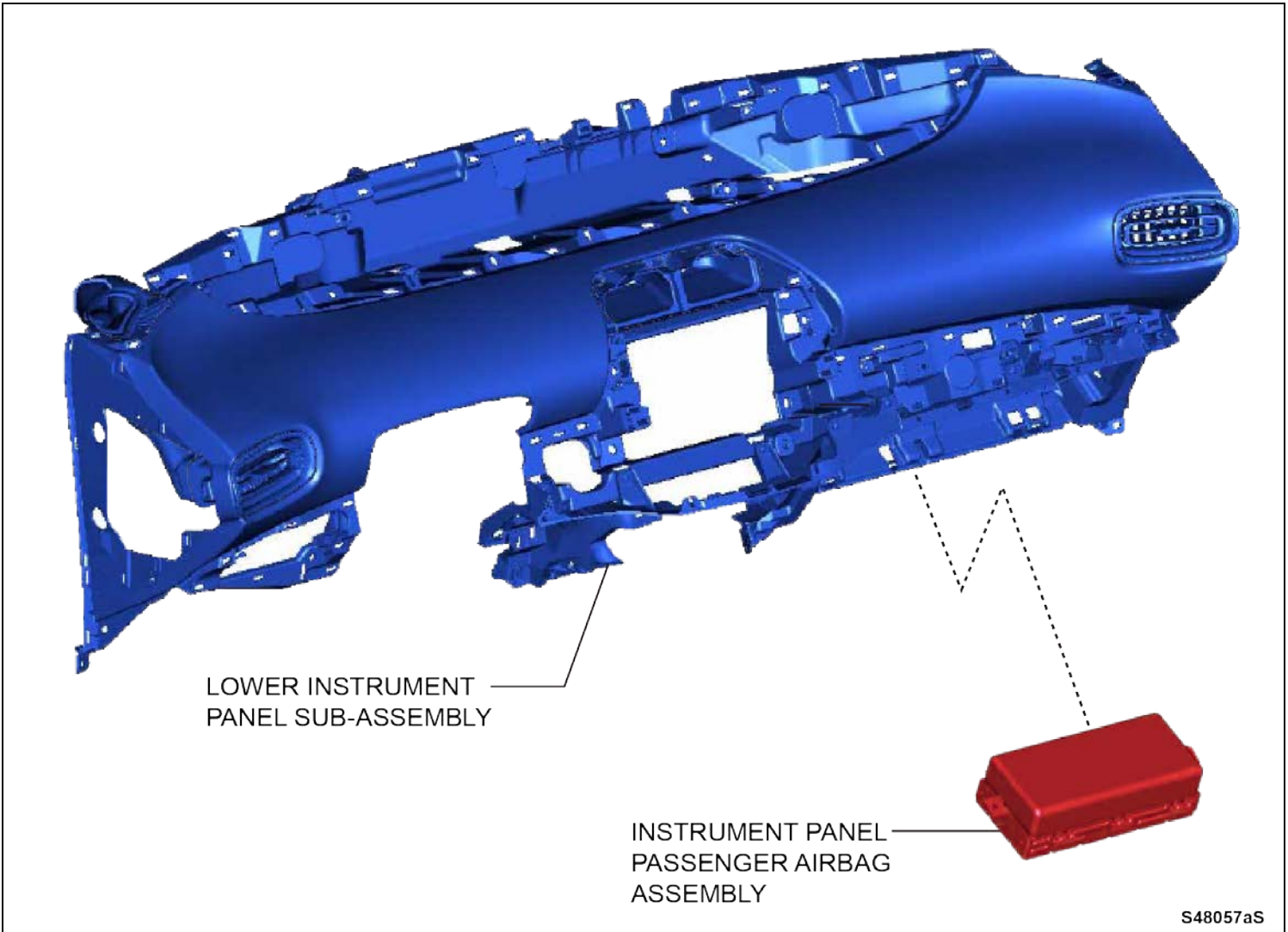
I. OPERATION FLOW CHART

The flow chart is for reference only. **DO NOT** use it in place of the full technical instructions. Follow **ALL** steps as outlined in the full technical instructions to confirm the campaign is completed correctly.



II. BACKGROUND

The involved vehicles are equipped with a front passenger air bag which contains stored, compressed gas in the inflator. A component in the air bag assembly may have been improperly welded and/or misassembled. If this occurs, the stored gas may escape without a deployment signal and result in the partial inflation of the air bag. This has been observed when the vehicle is parked and unoccupied for a period of time. An air bag that inflates in this manner can, under some circumstances, increase the risk of injury and the possibility of a crash.



III. IDENTIFICATION OF AFFECTED VEHICLES

- Check the TIS Vehicle Inquiry System to confirm the VIN is involved in this Safety Recall, and that the campaign has not already been completed prior to dealer shipment or by another dealer.
- **TMS warranty will not reimburse dealers for repairs conducted on vehicles that are not affected or were completed by another dealer.**

IV. PREPARATION

A. PARTS

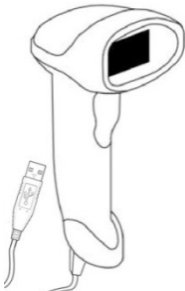
All applicable vehicles will require the parts in the table below

Part Number	Description	Qty
04006-51247	Kit, Front passenger airbag assembly	1

B. TOOLS & EQUIPMENT

- Standard hand tools
- Molding remover set
- Torque wrench
- Techstream
- Puller Set C

G0W CAMPAIGN TOOLS – This tool was previously provided to the dealership for campaign D0F and will be used for campaign G0W.

Image	Name	Quantity
 A line drawing of a handheld barcode scanner with a USB cable attached to the bottom.	Barcode Scanner	1

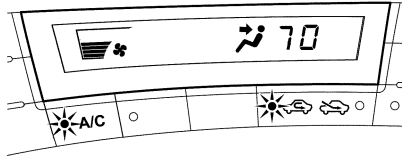
NOTE: This tool *CANNOT* be ordered through the parts or tool system. If additional scanners are needed, contact your regional representative.

V. VEHICLE PREPARATION AND PRECAUTIONS

REDUCE INTERIOR TEMPERATURE AND INFLATOR PRESSURE

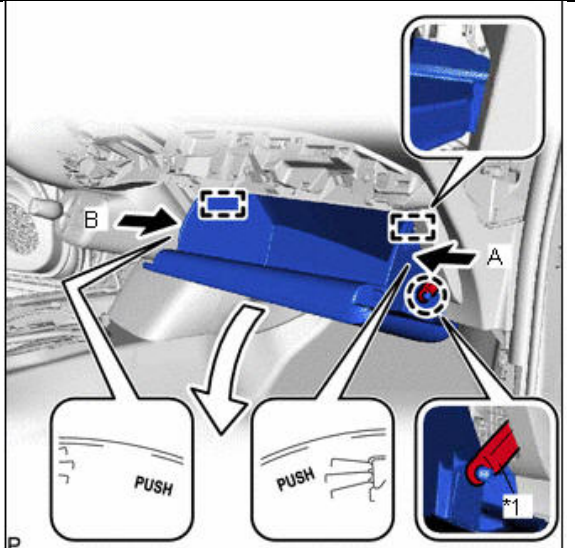


ALWAYS PERFORM THIS STEP TO ENSURE THE INFLATOR TEMPERATURE IS LOWERED. THIS IS CRUCIAL FOR YOUR SAFETY; SPECIFICALLY DURING THE HOTTER MONTHS WHEN DIRECT SOLAR LOAD IS PLACED ON VEHICLES.



1. RECORD THE CUSTOMER CLIMATE CONTROL SETTINGS

- Temperature
- Air Inlet Setting (Recirculation or Fresh Air)
- Vent Setting
- Vent Position

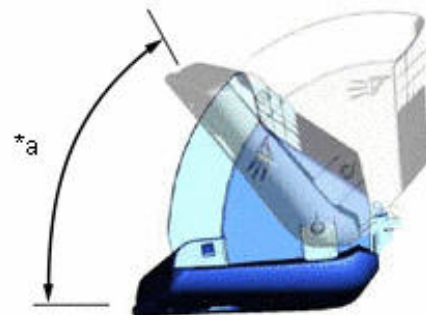
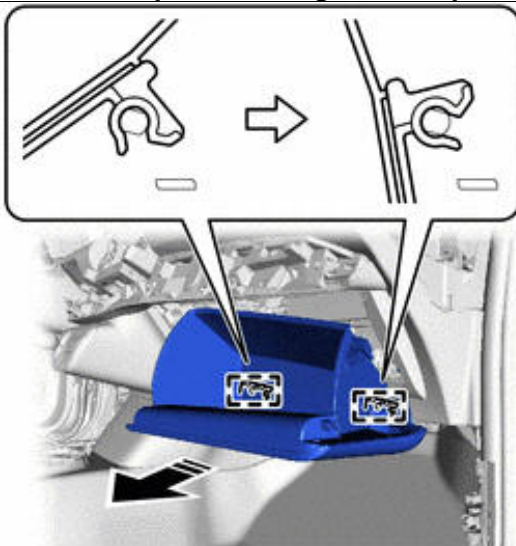


2. REMOVE THE GLOVE BOX

- Disengage the claw to disconnect the glove compartment door stopper.
- Slightly bend stoppers (A) and (B) in the directions indicated by the arrows shown in the illustration and open the glove compartment door until the stoppers are released.

- Open the glove compartment door to approximately 64.2° from its closed position. Pull it horizontally in the direction indicated by the arrow shown in the illustration to disengage the 2 hinges and remove the glove compartment door assembly.

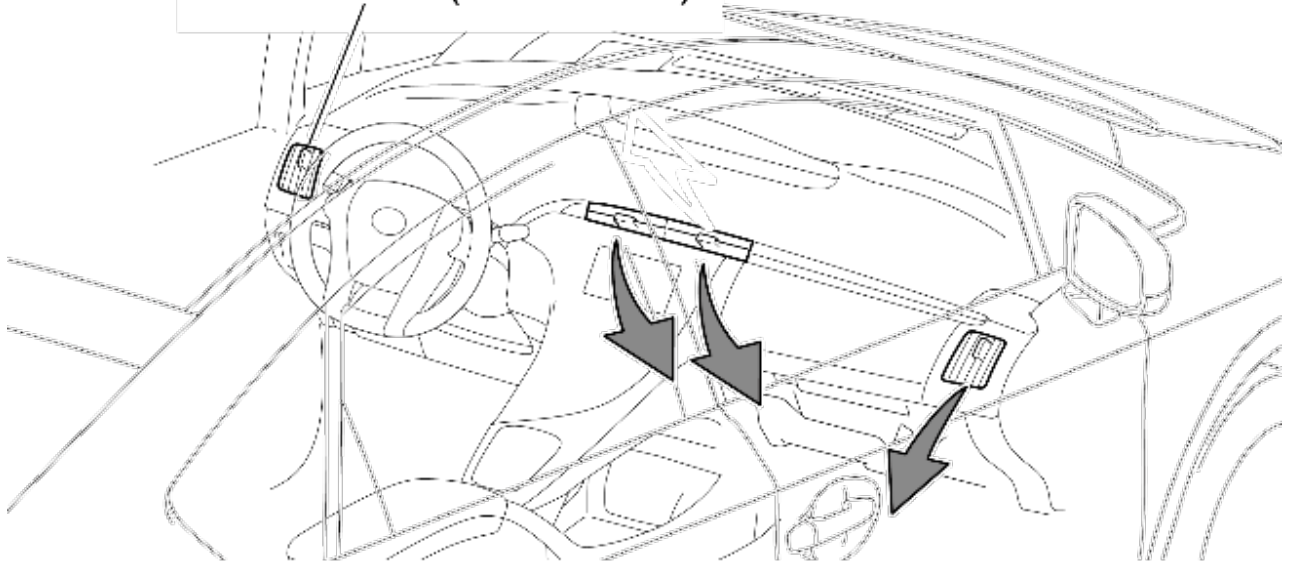
NOTE: Pulling the glove compartment door upward when removing it will cause the hinges to deform. Be sure to pull out the glove compartment door horizontally.



3. TURN ON THE A/C TO THE FOLLOWING SETTINGS

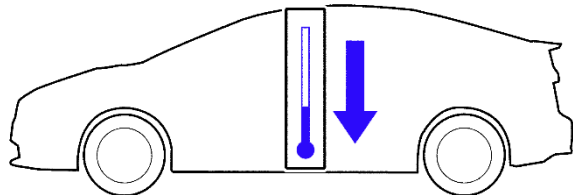
- a) A/C On
- b) Maximum blower/fan speed
- c) Max cool/LO setting
- d) Recirculation for air inlet
- e) Face mode

Shut this vent (driver side)



- A/C ON
- Maximum blower speed
- Maximum cooling
- Face mode
- Air recirculation

S48003bS



4. COOL INTERIOR

- a) Let the vehicle run for 15 minutes to lower the inflator temperature and pressure.

STOP

ALWAYS PERFORM THIS STEP TO ENSURE THE INFLATOR TEMPERATURE IS LOWERED. THIS IS CRUCIAL FOR YOUR SAFETY; SPECIFICALLY DURING THE HOTTER MONTHS WHEN DIRECT SOLAR LOAD IS PLACED ON VEHICLES.

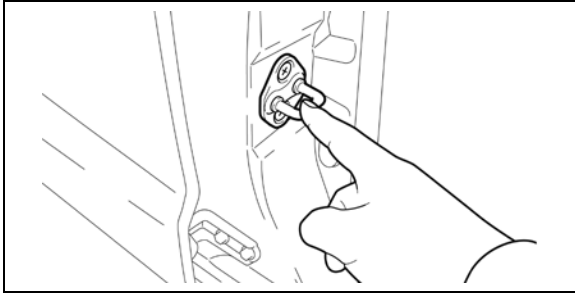
STOP

STOP

CRITICAL INFORMATION – READ THOROUGHLY

STOP

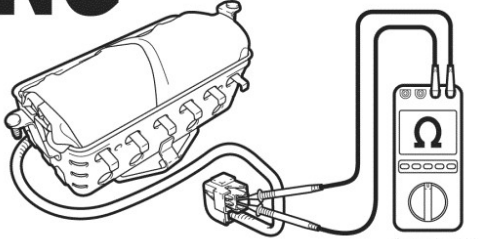
Failure to follow these procedures correctly could cause the SRS to unexpectedly deploy during servicing or the SRS may fail to operate correctly when required after reassembly. Confirm all work is performed as described in these instructions.



1. ELIMINATE STATIC ELECTRICITY

- a) Before starting work and periodically while working on the vehicle, touch a metallic part of the vehicle to discharge static electricity in the body.

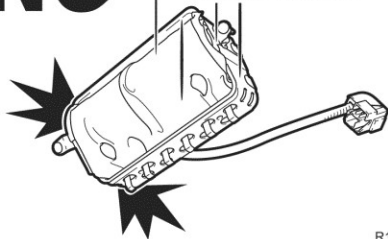
NG DO NOT measure resistance.



2. DO NOT MEASURE RESISTANCE

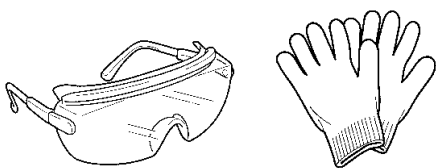
- a) **DO NOT** measure resistance of air bag components, this may cause accidental activation.

NG Replace with new one.



3. HANDLE THE AIR BAG CAREFULLY

- a) If an inflator is dropped, replace it with a **NEW** inflator.



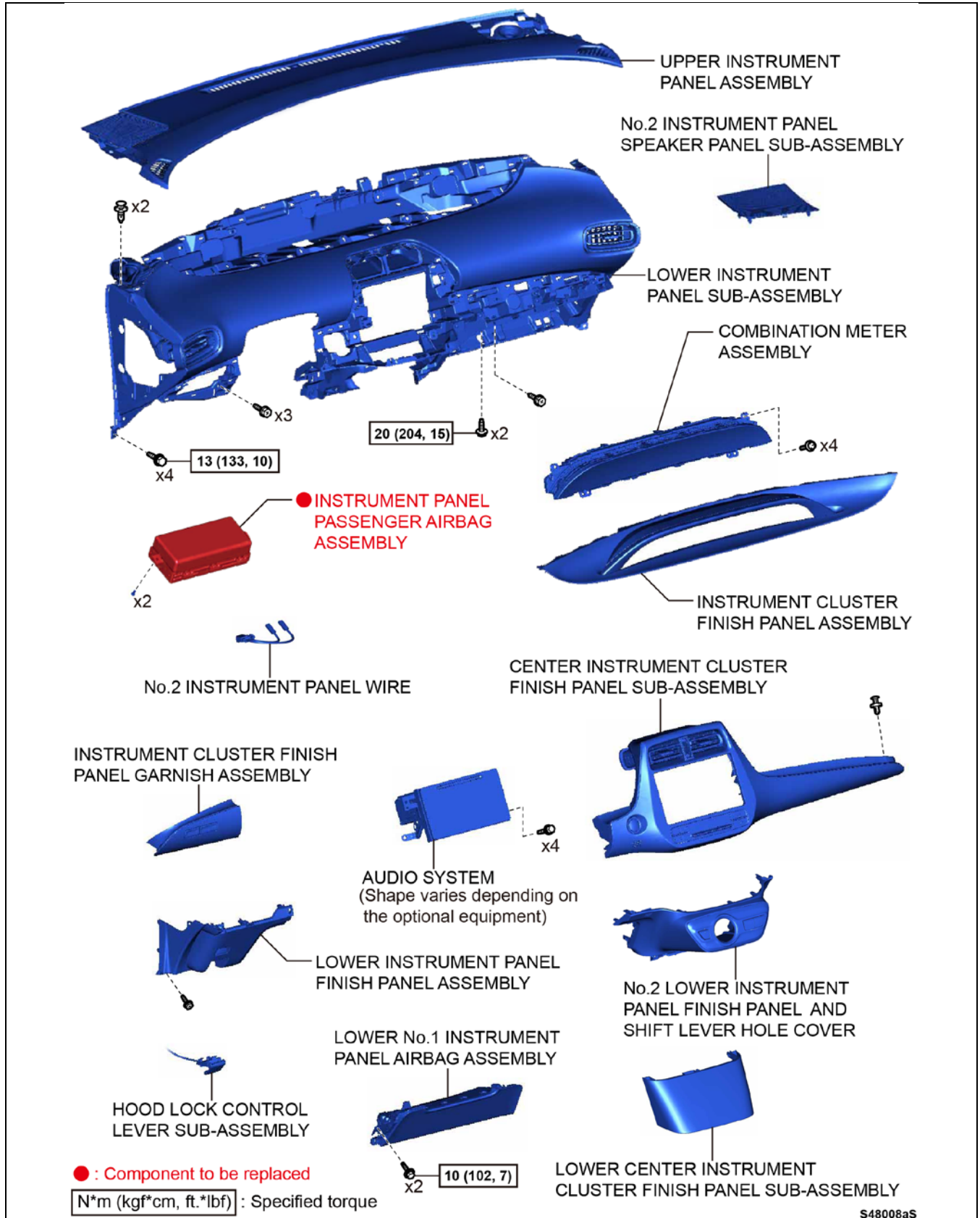
Wear protective eye wear and work gloves.

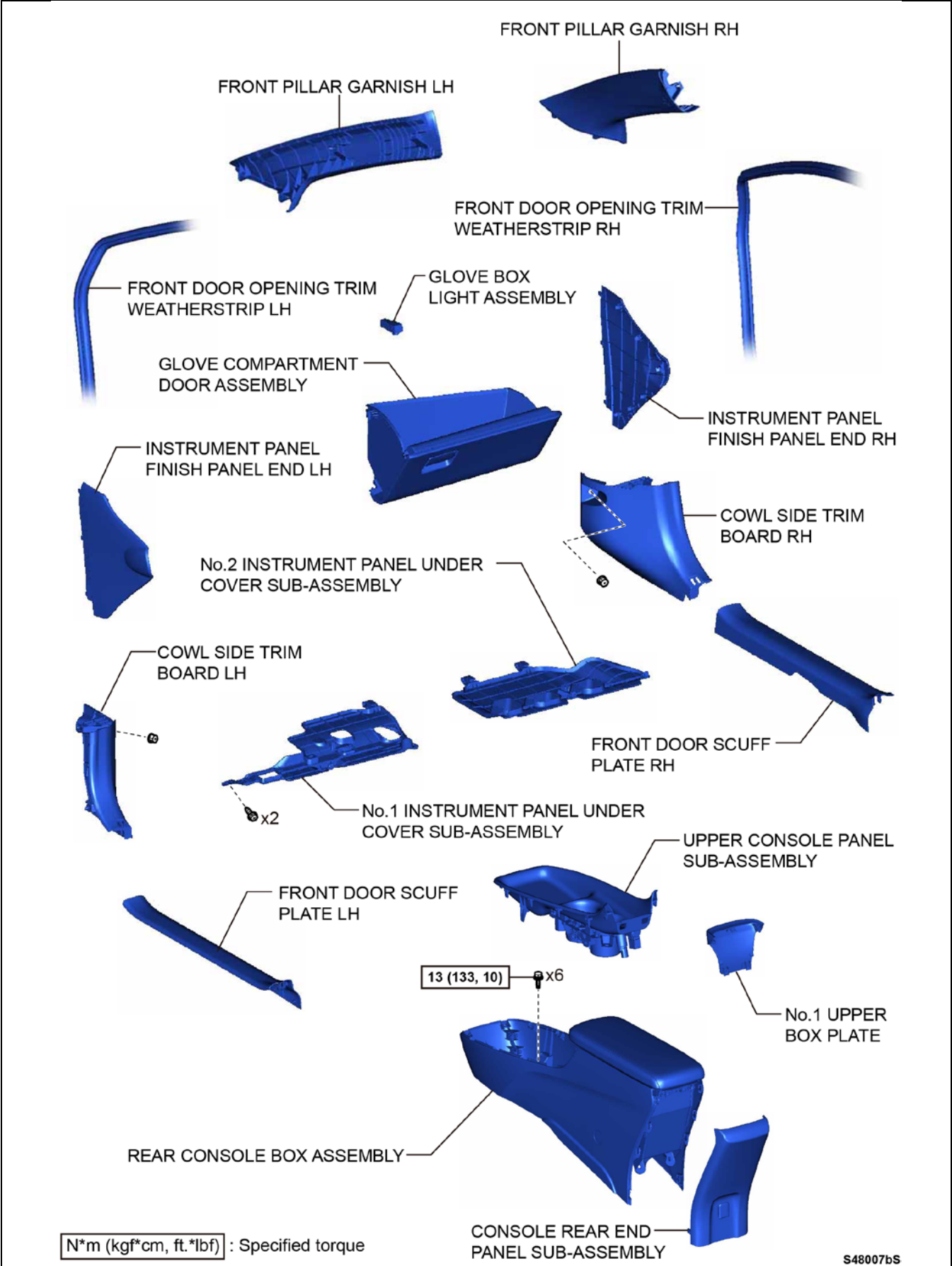
4. WEAR PROTECTIVE EQUIPMENT

- a) Always wear appropriate protective equipment when working on the SRS.

VI. WORK PROCEDURE

A. COMPONENTS

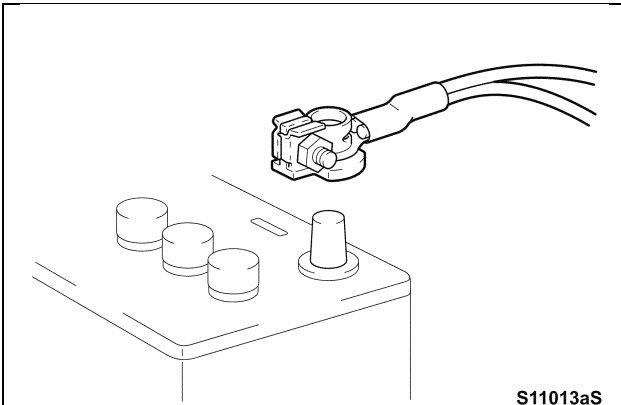




4. REMOVE THE AIRBAG MODULE



Ensure that the interior temperature inside the vehicle has been lowered as described in Section V .VEHICLE PREPARATION AND PRECAUTIONS. High interior temperature leads to higher gas pressures in the air bag inflator.

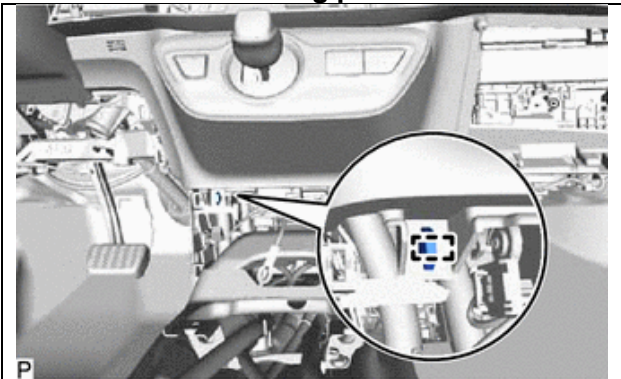


- a) Disconnect the negative battery cable.
NOTE: For vehicles with a navigation system, after vehicle shut down allow at least 6 minutes prior to battery disconnect so the navigation system may save information and settings.

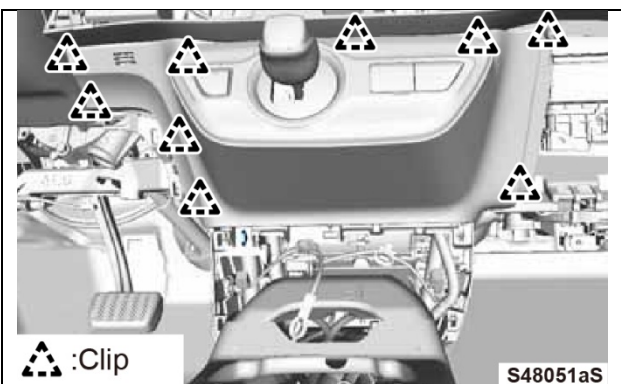
b) Refer to TIS for instructions on air bag removal:

Prius [2016MY Front Passenger Air Bag Removal](#)

NOTE: Use the following procedure to remove the No.2 lower finish panel.



- c) Disengage the clamp.



- d) Disengage the 9 clips.
e) Disconnect the connectors.
f) Remove the shift lever cover and the No.2 lower finish panel as one piece.

g) Mark the old airbag so it is not reused.

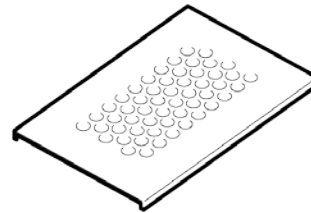
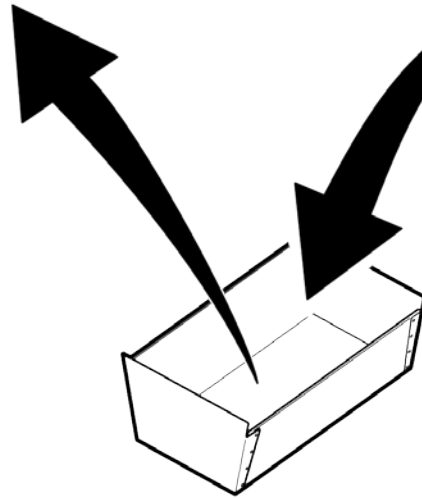
NOTE: The air bag sub-harness will be reused, remove as described in the repair manual. After scanning the old air bag serial number immediately place the old air bag into the shipping container the new air bag arrived in and return the old air bag to the parts department for recovery. Refer to Section IX Step B PACKAGING THE OLD AIR BAG FOR RETURN

In order to record the serial number, use the **NEW** airbag's box when sending back the old airbag

NEW airbag



Old airbag



S48074aS



Ensure that the old air bag and shipping container are stored in a cool and secure area
High outside temperatures leads to higher gas pressures in the air bag inflator.

5. LAUNCH THE SERIAL NUMBER RECORDING APPLICATION



- The AIR BAG MODULE serial number **MUST** be recorded using the barcode scanner (provided at the launch of SSC D0F).
- The barcode scanner application **MUST** be completed on every vehicle. These numbers **MUST** be included on every warranty claim that is submitted for module replacement or the claim may be subject to debit.
- The technician performing the work **MUST** have valid TIS login credentials and an internet connection to perform the inspection and scanning process.

- a) Log in to TIS and input the VIN of the vehicle in the Vehicle Inquiry tab.
- b) Confirm the VIN is applicable and that the campaign has not been completed.
- c) Click on the link to be sent to the scanning application site.
- d) You can also log into the scanning site via the URL below

Log into the website via the URL below
<https://takata-scan-app.imagespm.info/>

User ID: Dealer Code

First time login password: xxxxx

The screenshot displays the Toyota TIS Vehicle Inquiry interface. At the top, navigation tabs include Home, TIS, TAS, PRS, and QAT. The 'Vehicle Inquiry' tab is active. Below the navigation, there are tabs for Library, Diagnostics, Tech Assistance, and Vehicle Inquiry. The main content area is titled 'Vehicle Identification Number Search' and contains a search form with the VIN '1NX-BR32E-000000000' entered. A red circle highlights the VIN input field, labeled 'a)'. Below the search form, the 'Vehicle Information' section displays details for a 2003 Toyota Corolla CE, including drive type, body type, engine family, transmission, date of first use, production date, plant code, and exterior/interior colors. Below this, there are tabs for Campaign, Service History, Warranty, DTC History, and Diagnostic Report. The 'Service Campaign' section shows a campaign description for a Safety Recall D0F Remedy Notice. The 'Completion Status' is 'Not Completed', and a link to 'Check applicability for VIN' is highlighted with a red circle, labeled 'c)'. The VIN '1NX-BR32E-000000000' is also highlighted with a red circle, labeled 'b)'. The footer of the page includes the copyright notice '© 2013 Toyota Motor Sales, Inc.' and links for Feedback, Privacy, and Legal.

Login

Complete all required (*) fields below.

*** User ID (enter your 5-digit dealer code, or 6-digit for Canadian dealers eg. Cnnnnn format):**

*** Password:**

Login

[Forgot Password?](#)

Technician Information

Please provide information below before searching for VIN.

Technician Name:

SPIN ID (12 digit code):

Search

a) Enter your name and SPIN ID into the site

Enter VIN

Enter the 17-digit Vehicle Identification Number to begin the search for this campaign.

VIN:

Mileage on Vehicle:

Search

b) Enter the VIN and vehicle mileage into the site

1. SCAN THE AIRBAG SERIAL NUMBER

ATTENTION: This information is **CRITICAL**

- a) Scan the **AIRBAG ASSEMBLY** serial number 2 times.
 - 1) Confirm that the cursor is in the first serial number box and scan the bar code.
 - 2) Position the cursor in the second serial number box and rescan the bar code.
- b) Click next.

NOTE:

- If the serial numbers do not match, confirm and reenter.
- If the serial number barcode will not scan, it can be entered manually.

AIRBAG SERIAL NUMBER IDENTIFICATION

- The airbag serial number is **ALWAYS** the 12 **DIGITS** located between the asterisks.
- The 3 digits before the asterisk **ARE NOT** part of the serial number, and **SHOULD NOT** be entered or an inaccurate response may be returned.

Airbag Serial Number Label Example



The **AIRBAG ASSEMBLY** serial number **MUST** be recorded prior to replacement.

- c) Scan the **NEW** Airbag barcode in the Serial Number Recording Application.



Takata Scan App

TMS Test Dealership

[Search Another VIN](#) | [Print Screen](#) | [Log Out](#)

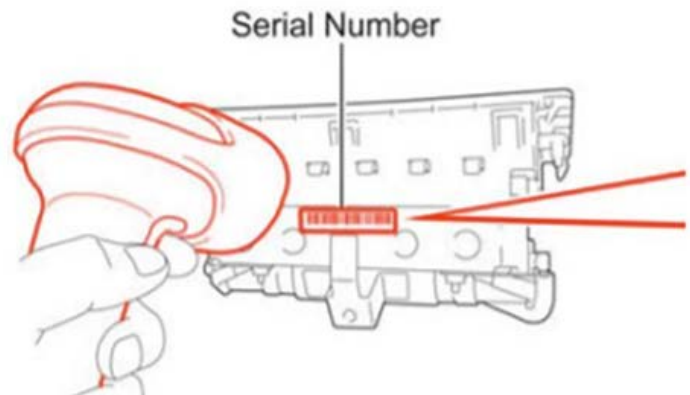
NEW Serial Number

Scan or enter the **new** Airbag Assembly Serial Number into the website.

VIN:

* Serial Number of New Airbag Assembly:

* Re-confirm the Serial Number of New Airbag Assembly:



- d) Confirm agreement by checking the two boxes and press next.



The new **AIRBAG ASSEMBLY** serial number **MUST** be recorded prior to reinstallation to track the airbag to the vehicle.

- a) Confirm agreement by checking the two boxes.
- b) Record the Warranty Authorization # to be included in the warranty claim.
- c) Place the old inflator in the parts box and take it immediately to the parts department.

NOTE:

- Confirm the cursor is in the correct serial number input box before scanning.
- If the serial number barcode will not scan, it can be entered manually.
- If there are any difficulties or concerns with this process, email quality_compliance@toyota.com with details.

Step e)

Takata Scan App (TEST v2) Final Results

You can [Print Screen](#) or [Search Another VIN](#).

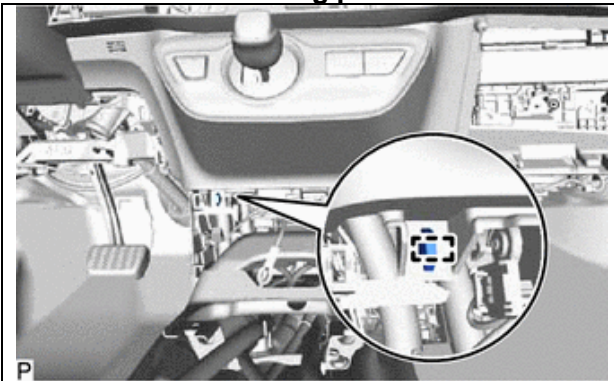
Results:	Inflator Replacement Required
Warranty Authorization Number:	77515K46 <small>This number is required for the warranty claim. Print and save this screen for your records</small>
VIN:	2T1BR32E57C810829
Vehicle:	2007 Corolla
Campaign:	E04
Original Airbag Serial:	123456789K12
Replacement Airbag Serial:	
Original Inflator Serial:	W0123456789
Replacement Inflator Serial:	W0123456789
Scan Date:	12/22/2020 08:47AM (mm/dd/yyyy)

6. INSTALL THE NEW AIRBAG

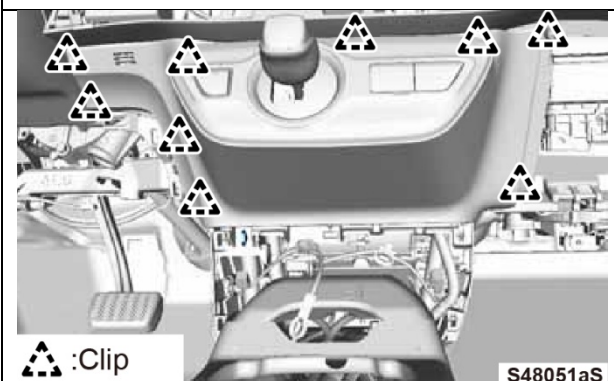
- a) Refer to TIS for instructions on air bag installation:

Prius [2016MY Front Passenger Air Bag Installation](#)

NOTE: Use the following procedure to reinstall the No.2 lower finish panel.



- a) Engage the clamp.



- b) Reinstall the No.2 lower finish panel and shift lever cover.
- c) Reconnect the connectors.
- d) Reengage the 9 clips.

NOTE: The sub-harness from the original air bag will be reused.

- 7. RECONNECT THE NEGATIVE BATTERY CABLE
- 8. PERFORM A HEALTH CHECK
- 9. INSPECT SRS LIGHT OPERATION

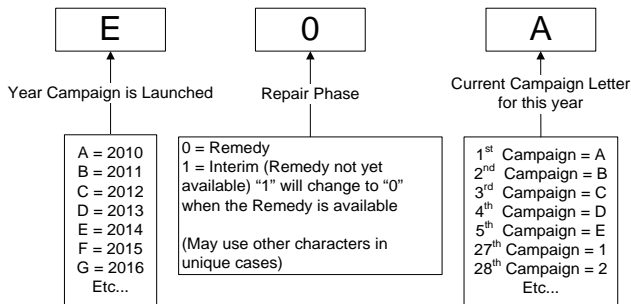
a) Turn "IG-ON" and confirm the SRS light go out after 6 seconds.

◀ VERIFY REPAIR QUALITY ▶

- Ensure the old airbag is correctly packaged and stored for recovery.
If you have any questions regarding this update, please contact your area representative.

IX APPENDIX

A. CAMPAIGN DESIGNATION DECODER





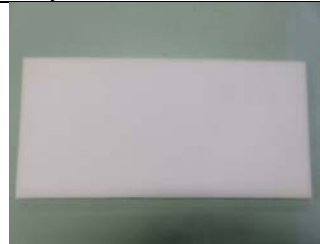

Examples:

- A0D = Launched in 2010, Remedy Phase, 4th Campaign Launched in 2010
- C1B = Launched in 2012, Interim Phase, 2nd Campaign Launched in 2012
- E0A = Launched in 2014, Remedy Phase, 1st Campaign Launched in 2014

B. PACKAGING THE OLD AIR BAG FOR RETURN

The packing material that the new air bag was shipped in will be reused. **ALL** air bags that are removed from vehicles under this campaign **MUST** be packaged and shipped back to the manufacturer.

Items needed to repack the old airbag

Old air bag	Steel Case	Polyurethane	Cardboard box
			

Repacking the old air bag



a) Place the polyurethane in the center of the steel case.



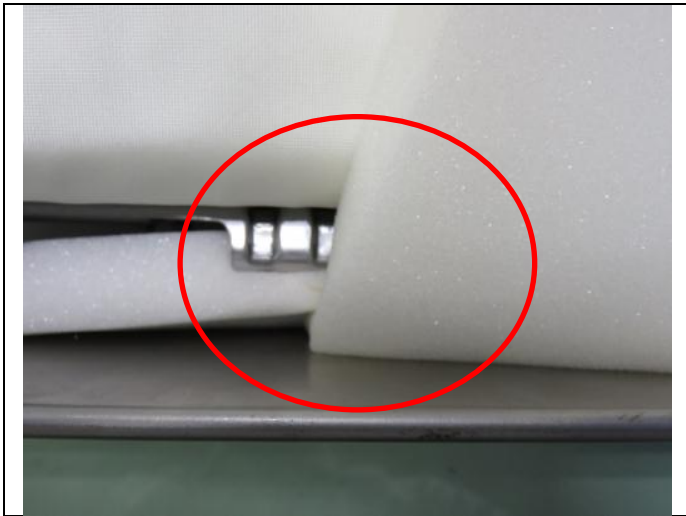
b) Place the old air bag in the center of the case.



c) Fold over the urethane as shown and tuck the urethane between the air bag and the case.



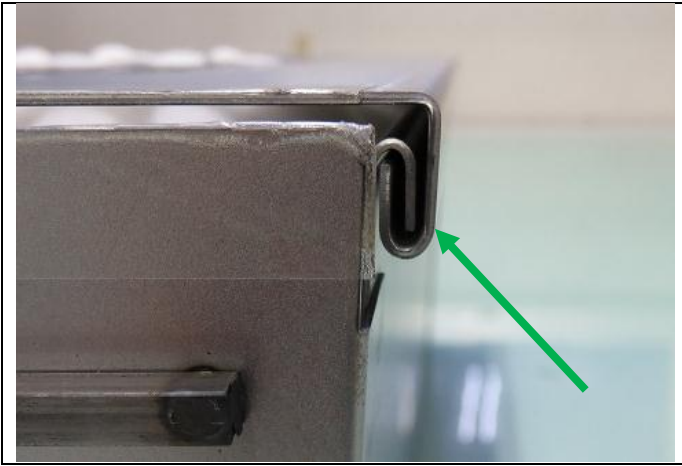
d) Repeat on the other side.



NOTE: To allow the lid to close properly ensure that the urethane is tucked between the air bag and the case. Ensure to tuck the urethane all the way around the air bag to avoid contact with the case.



e) Slide the lid onto the case and ensure the lid engages the flange.



NOTE: Ensure that the lid fully engages the case flange on both sides.



f) Place the steel case into the cardboard box.



g) Close the box with tape.

NOTE: Store the old air bag in a cool and secure place until pickup can be arranged.