



HYUNDAI

NEW THINKING.
NEW POSSIBILITIES.

Technical Service Bulletin

GROUP

RECALL

NUMBER

16-01-041

DATE

NOVEMBER 2016

MODEL(S)

Azera (TG)

SUBJECT: 2007-2008 AZERA (TG) DRIVER POWER SEAT SWITCH REPLACEMENT
(RECALL CAMPAIGN 150)

★ IMPORTANT

*** Retail Vehicles ***

Dealers must perform this Recall Campaign whenever an affected vehicle is in the shop for any maintenance or repair.

When a vehicle arrives at the service department, access Hyundai Motor America's "Warranty Vehicle Information" screen via WEBDCS to identify open Campaigns.

Description: The power-adjustable driver seat in the affected vehicles may intermittently not operate or move forward, rearward, up, down, or recline without driver input. Unintentional movement of the driver's seat may affect the driver's ability to control the vehicle, increasing the risk of a crash. This bulletin describes the procedure to replace the driver power seat switch to correct this condition.





Applicable Vehicles:

2007-2008 MY Azera (TG) vehicles produced beginning on March 07, 2007 through August 14, 2007

Circulate To: General Manager, Service Manager, Parts Manager, Warranty Manager, Service Advisors, Technicians, Body Shop Manager, Fleet Repair

Part Information:

Part Name	Part Number		Qty.
SW ASSY-PWR SEAT DRIVER	NON-IMS		1
		88193-3L211QQH	
	IMS (INTEGRATED MEMORY SYSTEM)		
		88193-3L100QQH	

Tools & Equipment Required:

Tool Name	Image	Remark
Phillips #2 Screwdriver		

Warranty Information:

Model	Op Code	Causal Part Number	Operation	Op Time	Nature	Cause
Azera (TG)	61C081R0	88193-3L100QQH 88193-3L211QQH	Driver Power Seat Switch Replacement	0.3 M/H	I14	ZZ1

NOTE 1: Submit Claim on Campaign Claim Entry Screen

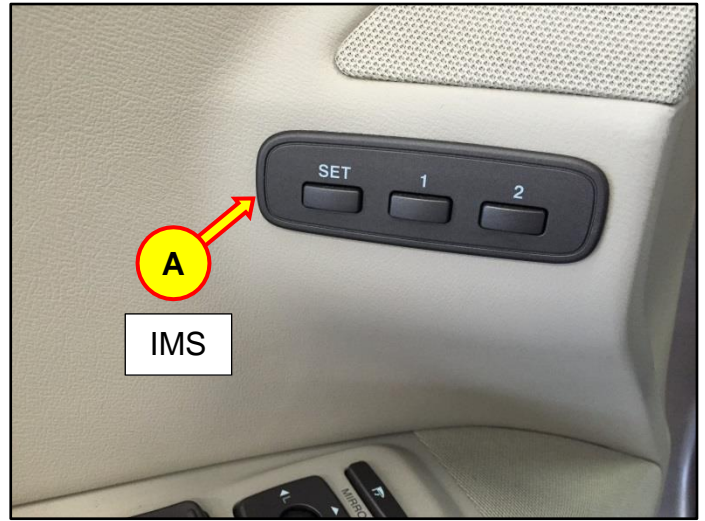
NOTE 2: If a part is found in need of replacement while performing Recall 150 and the affected part is still under warranty, submit a separate claim using the same Repair Order. If the affected part is out of warranty, submit a Prior Approval Request for goodwill consideration prior to performing the work.

Service Procedure:

- To identify the correct part replacement, examine the driver interior door panel to see if the vehicle is equipped with IMS (Integrated Memory System) (A) or not.

IMS (INTEGRATED MEMORY SYSTEM)
: P/N 88193-3L100QQH

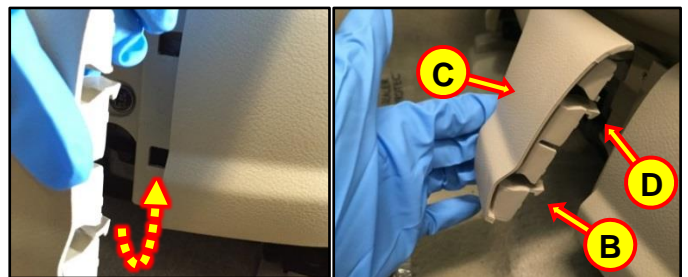
NON-IMS: P/N 88193-3L211QQH



- Move the driver seat rearward to access the seat forward cover.



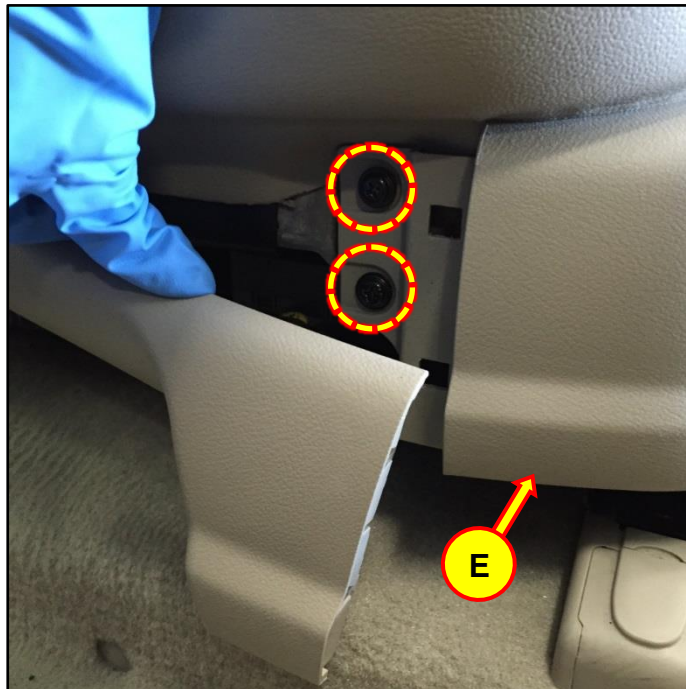
- Reach underneath the seat and push out the bottom tab (B). Pull the seat forward cover (C) forward gently to disengage the top tab (D).



⚠ CAUTION

Be careful not to damage the
seat forward cover.

4. Remove the screws on the seat shield cover (E) while gently holding down the seat forward cover.



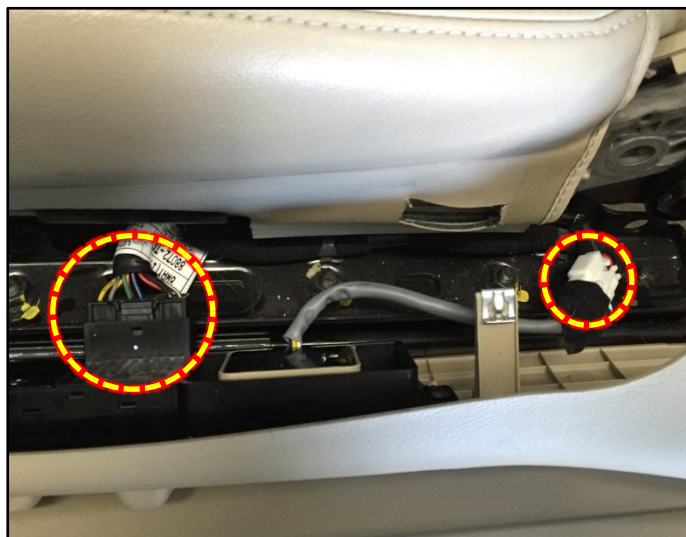
5. Move the driver seat forward to access the seat shield cover.



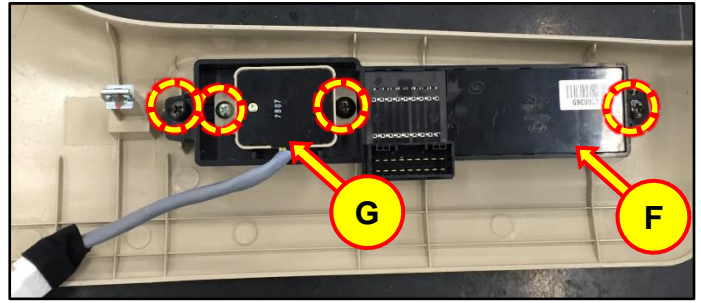
6. Remove the seat shield cover and disconnect the switch connectors.

⚠ CAUTION

Be careful not to damage the seat shield cover and connectors.



7. Remove the screws on the power seat switch (F) and the lumbar support switch (G).

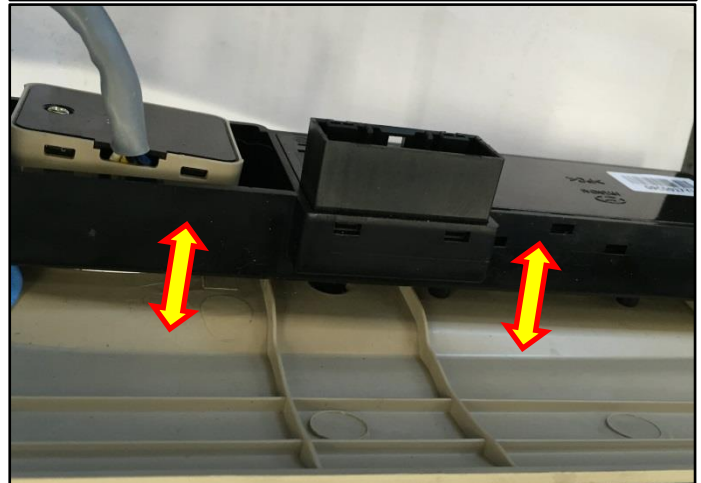


8. Remove the slide/height adjuster cover (H) and reclining switch cover (J) by pulling the power seat switch away from the seat shield cover.



NOTICE

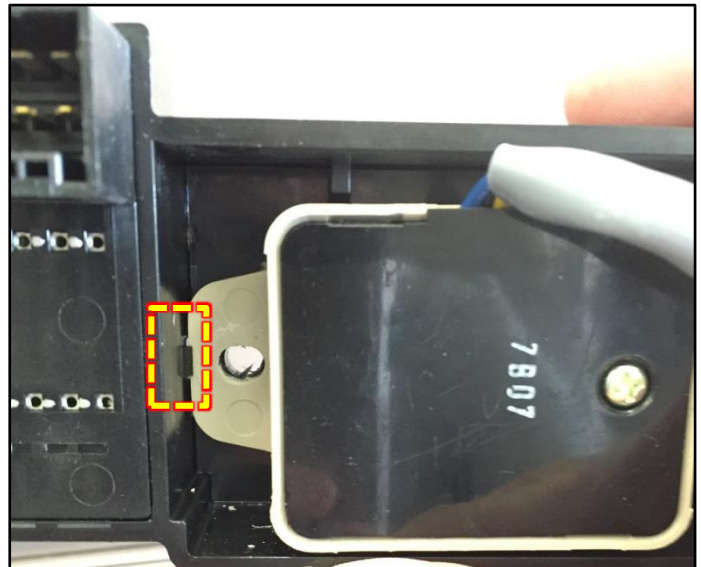
Reuse the removed switch covers.



9. Remove the lumbar support switch by unlocking the tab and install it on the new power seat switch.

NOTICE

Reuse the removed lumbar support switch.



10. Reinstall the removed parts in reverse order.
11. Test the power seat switch including the integrated memory seat function if applicable.