

Allegro Wiper Arm Recall Part A: Replacing Driver's Side Wiper Pivot Post Bracket

Tiffin Motorhomes, Inc.

Work Instruction Number:

WI-308

Effective Date: 08/15/2016

Revision: 00

Page 1 of 10

Purpose: To provide instructions on properly adjust the wipers on specific Allegro units

TOOLS NEEDED:

- 1- Measuring Tape
- 1- Pry bar
- 1- 13mm Wrench
- 1- 14mm Wrench
- 1- 36mm Socket and Torque Wrench
- 1- Block of Padded Material

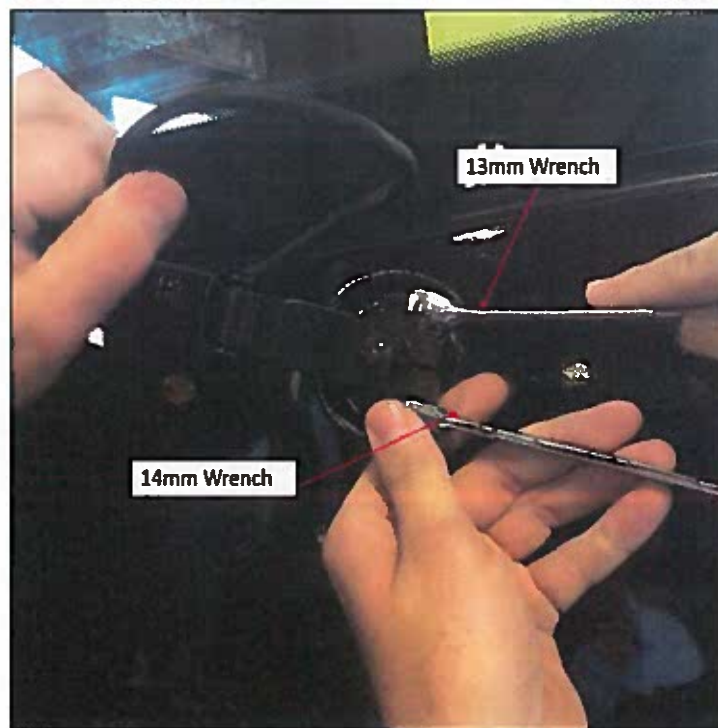
Parts Needed:

- 1- Pivot Post Bracket

Procedure:

All washers, nuts and the C-clip that are removed will be needed.

1. Using a 13mm wrench on the top and a 14mm wrench on bottom, loosen the tension bolt, and unhook the wiper fluid hose.



Allegro Wiper Arm Recall Part A: Replacing Driver's Side Wiper Pivot Post Bracket

Tiffin Motorhomes, Inc.

Work Instruction Number:

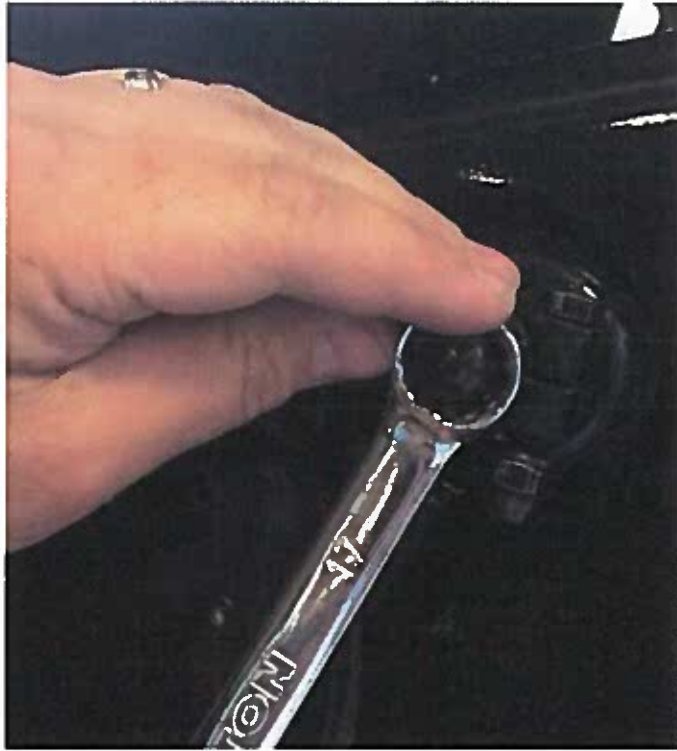
W1-308

Effective Date: 08/15/2016

Revision: 00

Page 2 of 10

- Using a 17mm wrench remove the nut and washers seen below.



- Using a soft block and a pry bar wiggle the wiper arm until it is free.



Allegro Wiper Arm Recall Part A: Replacing Driver's Side Wiper Pivot Post Bracket

Tiffin Motorhomes, Inc.

Work Instruction Number:

WI-308

Effective Date: 08/15/2016

Revision: 00

Page 3 of 10

4. Remove the plastic wiper cap.



5. Using a 36mm socket and ratchet, remove the nut and washers from the pivot post bracket.



Allegro Wiper Arm Recall Part A: Replacing Driver's Side Wiper Pivot Post Bracket

Tiffin Motorhomes, Inc.

Work Instruction Number:

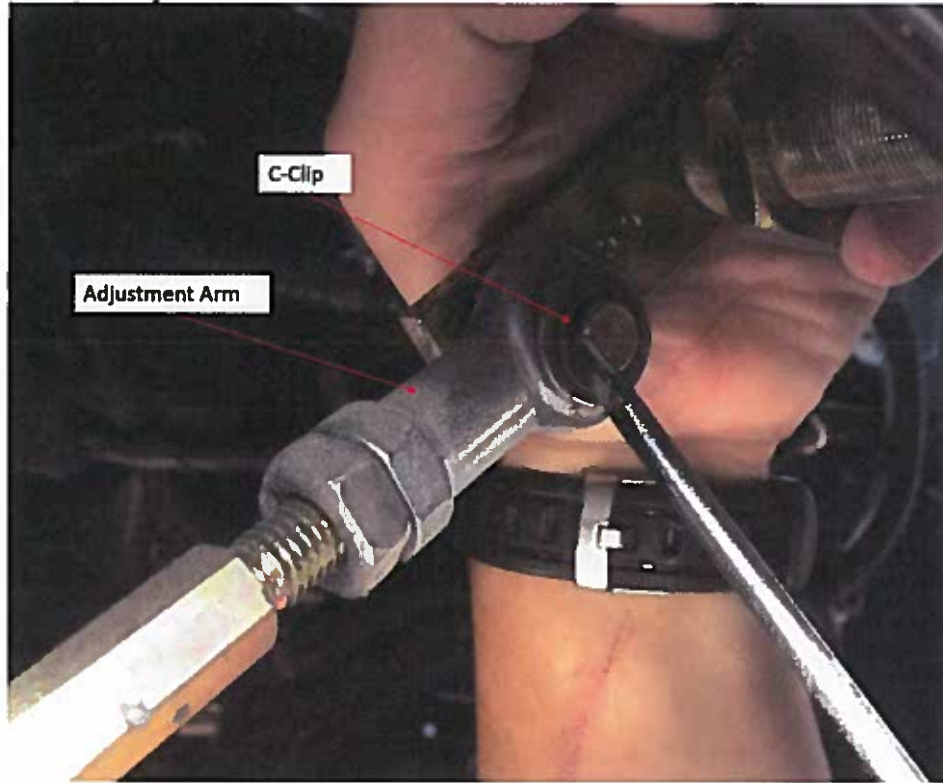
W1-308

Effective Date: 08/15/2016

Revision: 00

Page 4 of 10

- Using a flat headed screw driver remove the C-clip and washers. Separate the pivot post bracket from the adjustment arm.



- Remove the pivot post bracket by pushing it toward the unit.



Allegro Wiper Arm Recall Part A: Replacing Driver's Side Wiper Pivot Post Bracket

Tiffin Motorhomes, Inc.

Work Instruction Number:

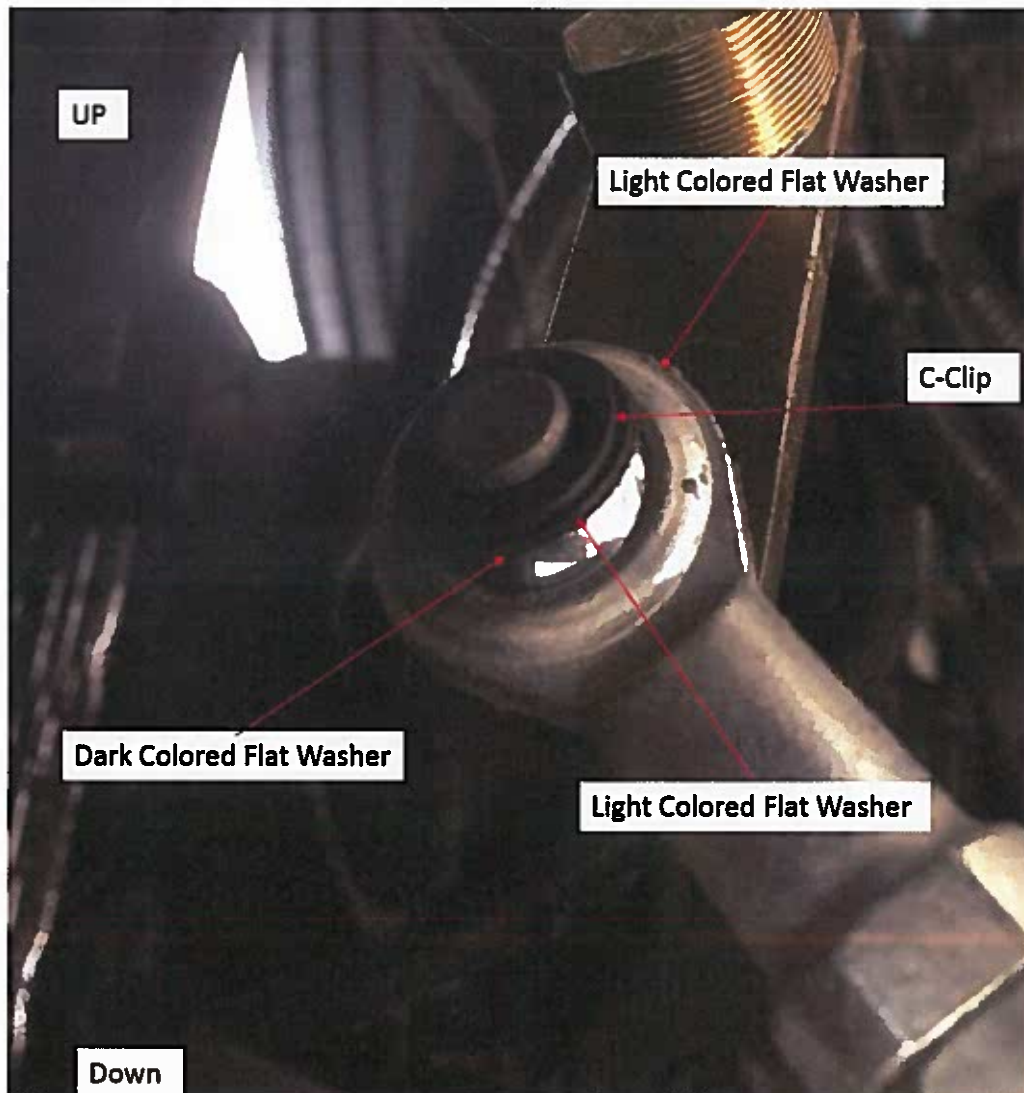
WI-308

Effective Date: 08/15/2016

Revision: 00

Page 5 of 10

8. Discard the old pivot post bracket, and attach the adjustment arm to the new pivot post bracket. The pivot post bracket must point up. Place the washers and C-clip in the following order:
- A. Lighter colored washer between the adjustment arm and the new inner wiper arm
 - B. Adjustment arm
 - C. Dark colored washer
 - D. Lighter colored washer
 - E. C-Clip



Allegro Wiper Arm Recall Part A: Replacing Driver's Side Wiper Pivot Post Bracket

Tiffin Motorhomes, Inc.

Work Instruction Number:

WI-308

Effective Date: 08/15/2016

Revision: 00

Page 6 of 10

9. Guide the new pivot post bracket through the opening in the front cap.



10. Secure the pivot post bracket to the front cap using the washers and nut from the old pivot post bracket. Torque the nut to 30 Foot pounds.



Allegro Wiper Arm Recall Part A: Replacing Driver's Side Wiper Pivot Post Bracket

Tiffin Motorhomes, Inc.

Work Instruction Number:

WI-308

Effective Date: 08/15/2016

Revision: 00

Page 7 of 10

11. Make sure the adjustment arm is set for 20" from center of the hole to center of the hole.



12. Place the plastic wiper cap on the new pivot post bracket.



Allegro Wiper Arm Recall Part A: Replacing Driver's Side Wiper Pivot Post Bracket

Tiffin Motorhomes, Inc.

Work Instruction Number:

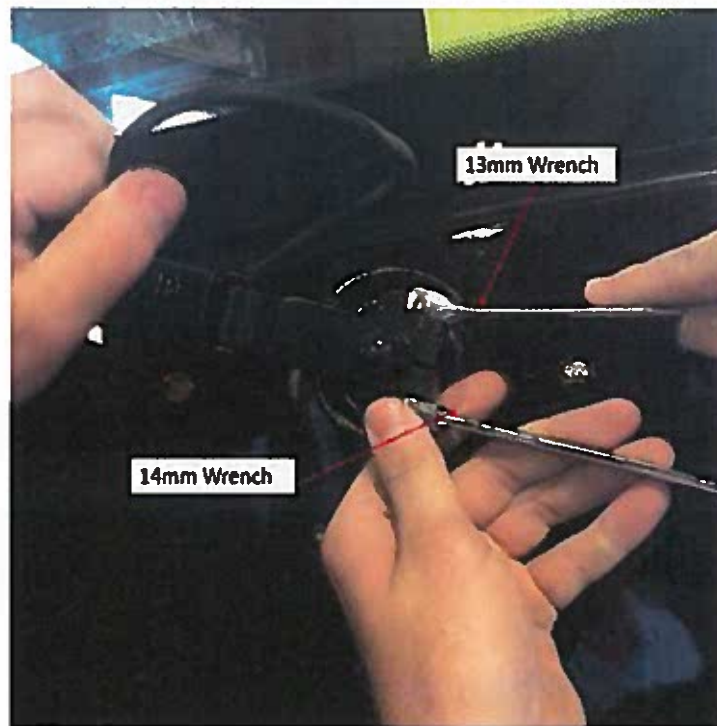
WI-308

Effective Date: 08/15/2016

Revision: 00

Page 8 of 10

13. Attach the wiper arm to the pivot post bracket. Make sure that the wiper blade is parallel with the ground.
14. Secure the wiper arm to the pivot post bracket by placing the nut and washers previously removed. Torque the nut to 34 foot lbs.
15. Using a 13mm wrench on the top and a 14mm wrench on bottom, torque the tension bolt to 16 foot lbs., and attach the wiper fluid hose.



Allegro Wiper Arm Recall Part B: Installing the Wiper Motor Forward Support Bracket

Tiffin Motorhomes, Inc.

Work Instruction Number:

WI-309

Effective Date: 08/15/2016

Revision: 00

Page 1 of 5

Purpose: To provide instructions on properly adjust the wipers on specific Allegro units

TOOLS NEEDED:

- 2- ½" Wrench
- 1- 400 Grit Sand Paper

Parts Needed:

- 1- EXT 534 Adhesive Tiffin Part Number = 5052095

Procedure:

All washers and nuts that are removed will be needed.

1. Using two ½" wrenches remove the bottom bracket on the wiper motor.



Allegro Wiper Arm Recall Part B: Installing the Wiper Motor Forward Support Bracket

Tiffin Motorhomes, Inc.

Work Instruction Number:

WI-309

Effective Date: 08/15/2016

Revision: 00

Page 2 of 5

2. Using 400 grit sand paper remove the slick finish from the bottom of the bottom bracket. This will allow the adhesive to bond with the bracket more securely.



3. Using 400 grit sand paper, sand the area of the hood where the bottom bracket was touching it. The goal is to remove the glossy surface of the fiberglass. This will allow the adhesive to bond with the fiberglass more securely.



Allegro Wiper Arm Recall Part B: Installing the Wiper Motor Forward Support Bracket

Tiffin Motorhomes, Inc.

Work Instruction Number:

WI-309

Effective Date: 08/15/2016

Revision: 00

Page 3 of 5

4. Reattach the bottom bracket using the bolts and washers that were removed in step 1. Leave the bolts loose.



Allegro Wiper Arm Recall Part B: Installing the Wiper Motor Forward Support Bracket

Tiffin Motorhomes, Inc.

Work Instruction Number:

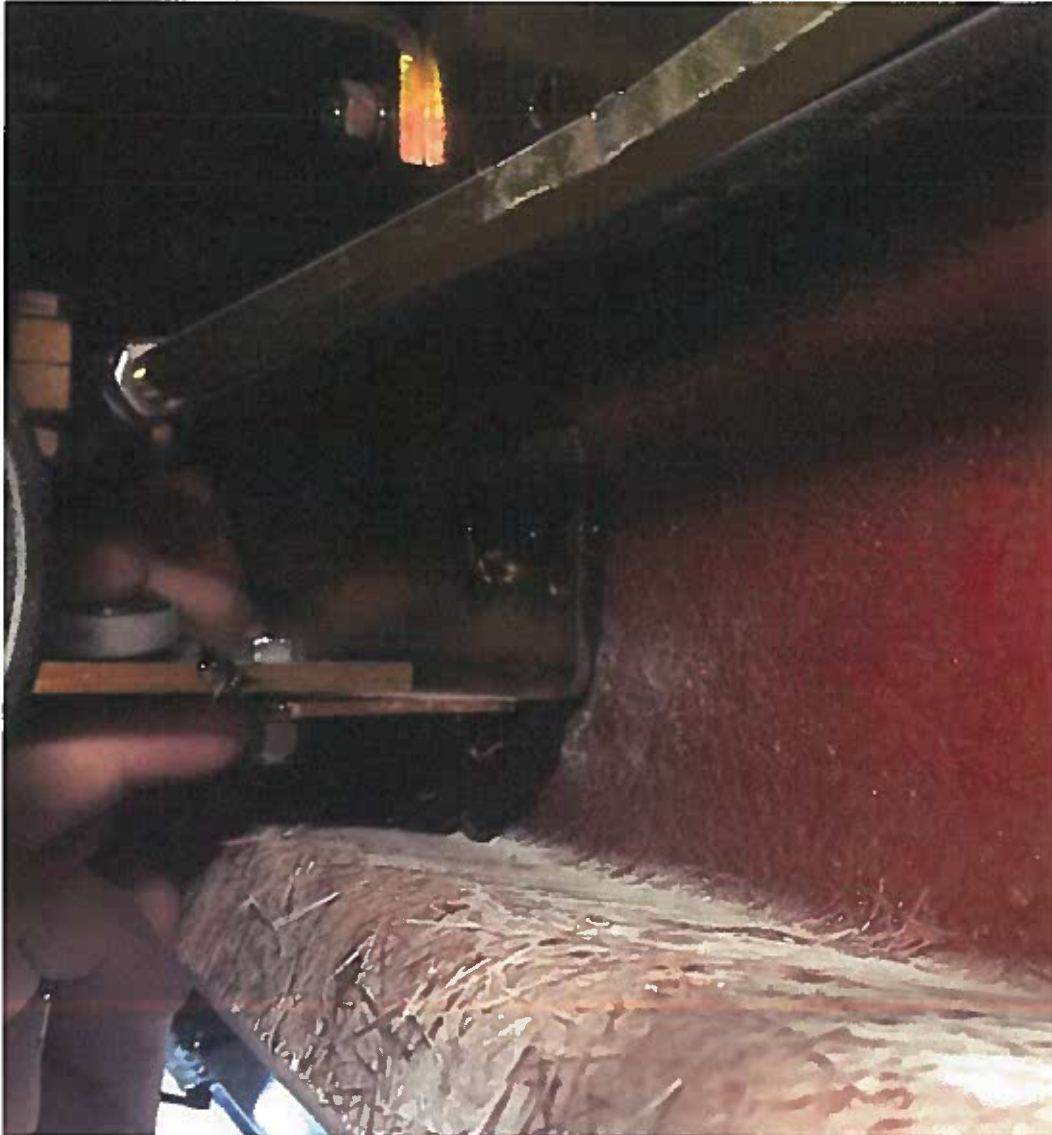
WI-309

Effective Date: 08/15/2016

Revision: 00

Page 4 of 5

5. Cover the entire area of the hood that the bottom bracket will touch with a 1/8" thick bead of EXT 534 adhesive Tiffin Part Number 5052095.
6. Press the bottom bracket into the adhesive, allowing it to ooze out from under the bracket. Using two 1/2" wrenches, tighten the bolts left loose in step 4.



Allegro Wiper Arm Recall Part C: Installing the Wiper Motor Aft Support

Tiffin Motorhomes, Inc.

Work Instruction Number:

WI-310

Effective Date: 08/15/2016

Revision: 00

Page 1 of 4

Purpose: To provide instructions on properly adjust the wipers on specific Allegro units

TOOLS NEEDED:

- 2- ½" Wrench
- 1- Philips Headed Drill Bit
- 1- Drill
- 1- Long Bit Extension

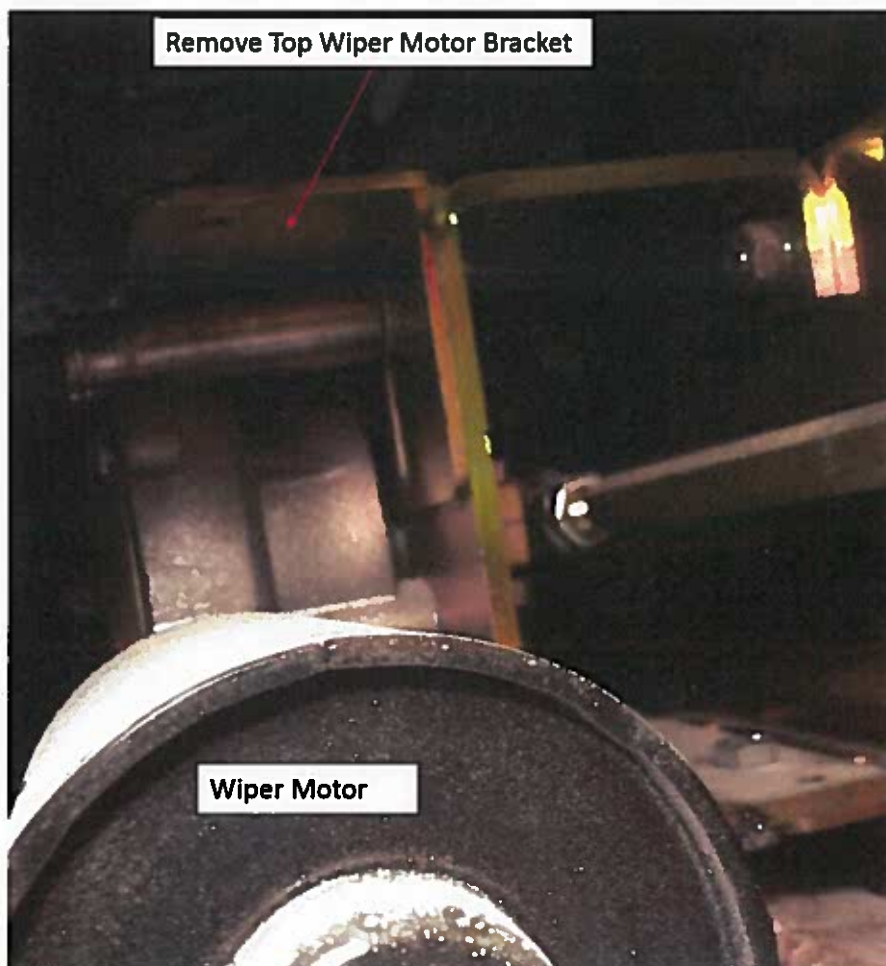
Parts Needed:

- 4- ¼" X ½" Philips headed Stainless Steel screws
- 1- New Wiper Motor Bracket

Procedure:

All washers and nuts that are removed will be needed.

1. Using two ½" wrenches remove the Top bracket on the wiper motor.



Allegro Wiper Arm Recall Part C: Installing the Wiper Motor Aft Support

Tiffin Motorhomes, Inc.

Work Instruction Number:

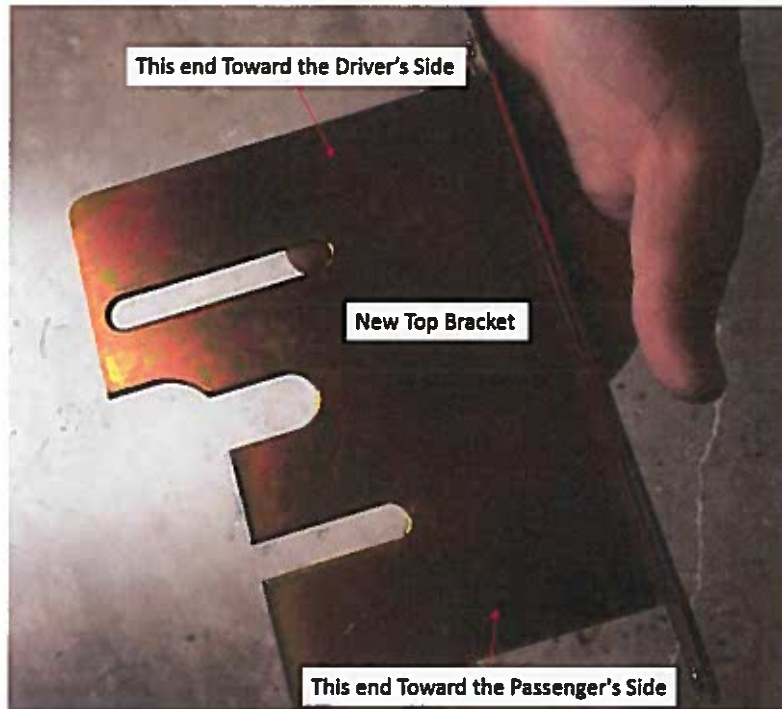
WI-310

Effective Date: 08/15/2016

Revision: 00

Page 2 of 4

2. Using the bolts and washers removed in the prior step attach the new top bracket. Leave the bolts loose for now.



Allegro Wiper Arm Recall Part C: Installing the Wiper Motor Aft Support

Tiffin Motorhomes, Inc.

Work Instruction Number:

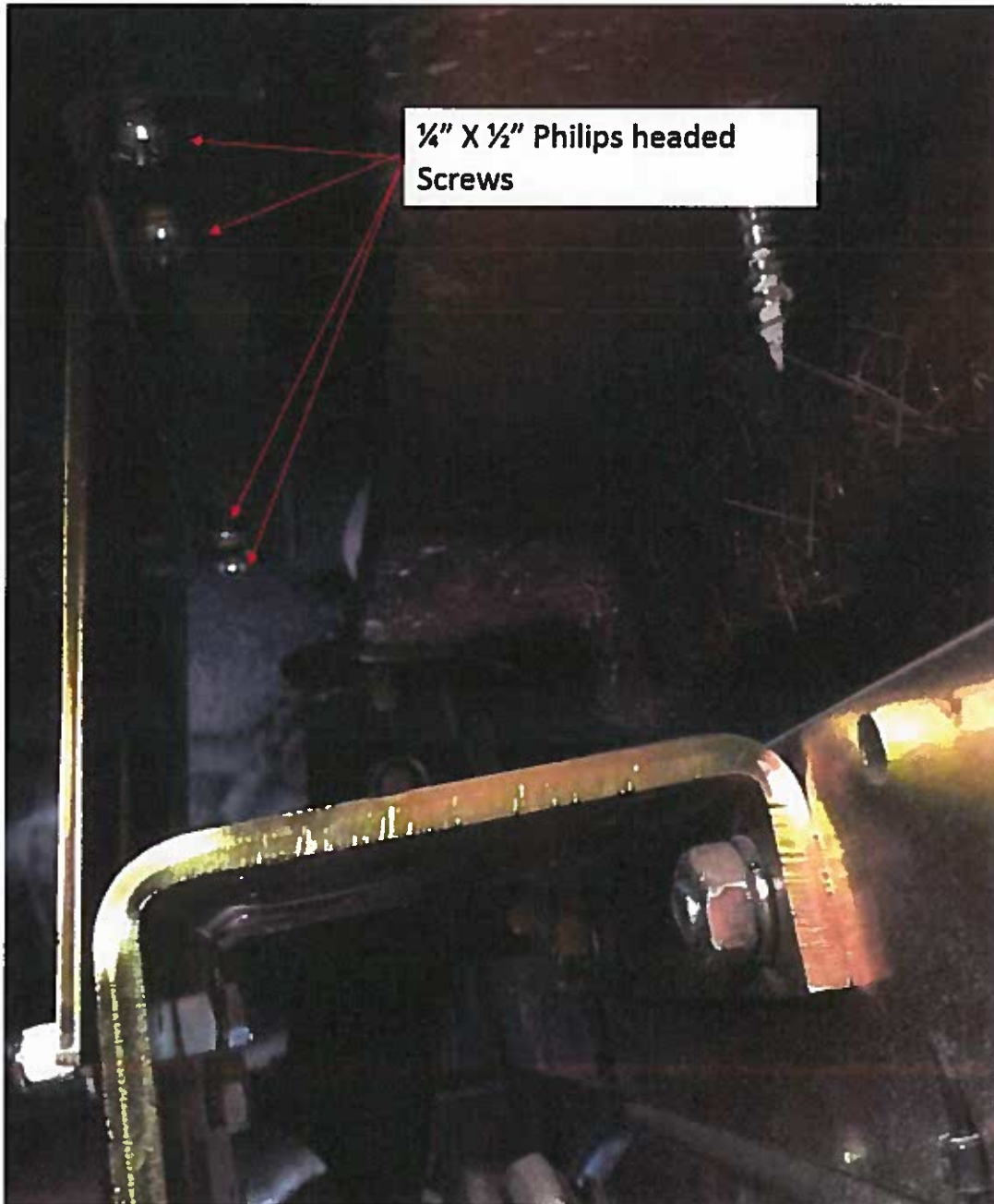
WI-310

Effective Date: 08/15/2016

Revision: 00

Page 3 of 4

3. Secure the top of the new bracket to the dash above it, using one ¼" X ½" Philips headed Stainless Steel screw in each of the four holes.



4. Tighten the bolts left loose in step 2.