

2007-2012 CX-7 - FRONT LOWER CONTROL ARMS - SAFETY RECALL 9716H

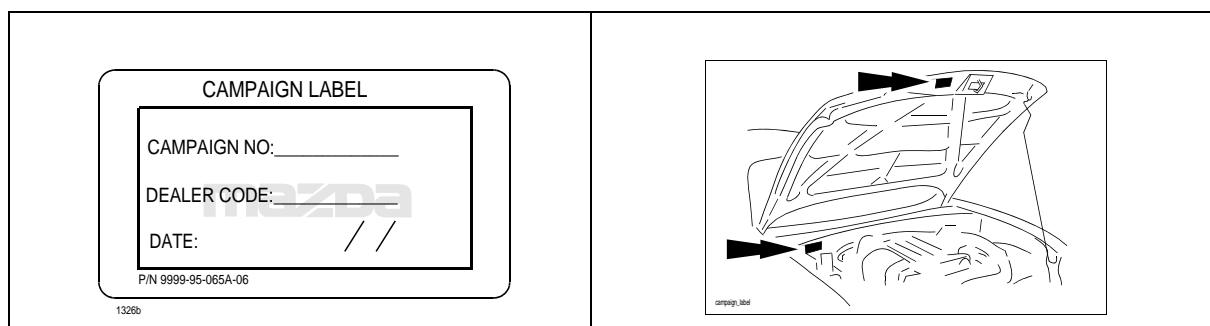
A. REPAIR PROCEDURE

1. Verify that the vehicle is within the following range:

Model Year	VIN Range		Build Date Range
2007	JM3ER***	70 100057 – 169185	February 14, 2006 through May 31, 2012
2008		80 169188 – 215755	
2009		90 215758 – 238633	
2010		A0 300038 – 353047	
2011		B0 353048 – 410394	
2012		C0 410395 – 425737	

- If the vehicle is within the above range, proceed to Step 2.
 - If the vehicle is not within the above range, return vehicle to the customer or inventory.
2. Perform a Warranty Vehicle Inquiry using your eMDCS System and inspect vehicle for Campaign Labels **Recall 9716H** attached to the vehicle's hood or bulkhead. Refer to eMDCS System - Warranty Vehicle Inquiry Results table below.

NOTE: Be sure to verify Recall number as the vehicle may have multiple Recall labels.

**eMDCS System - Warranty Vehicle Inquiry Results:**

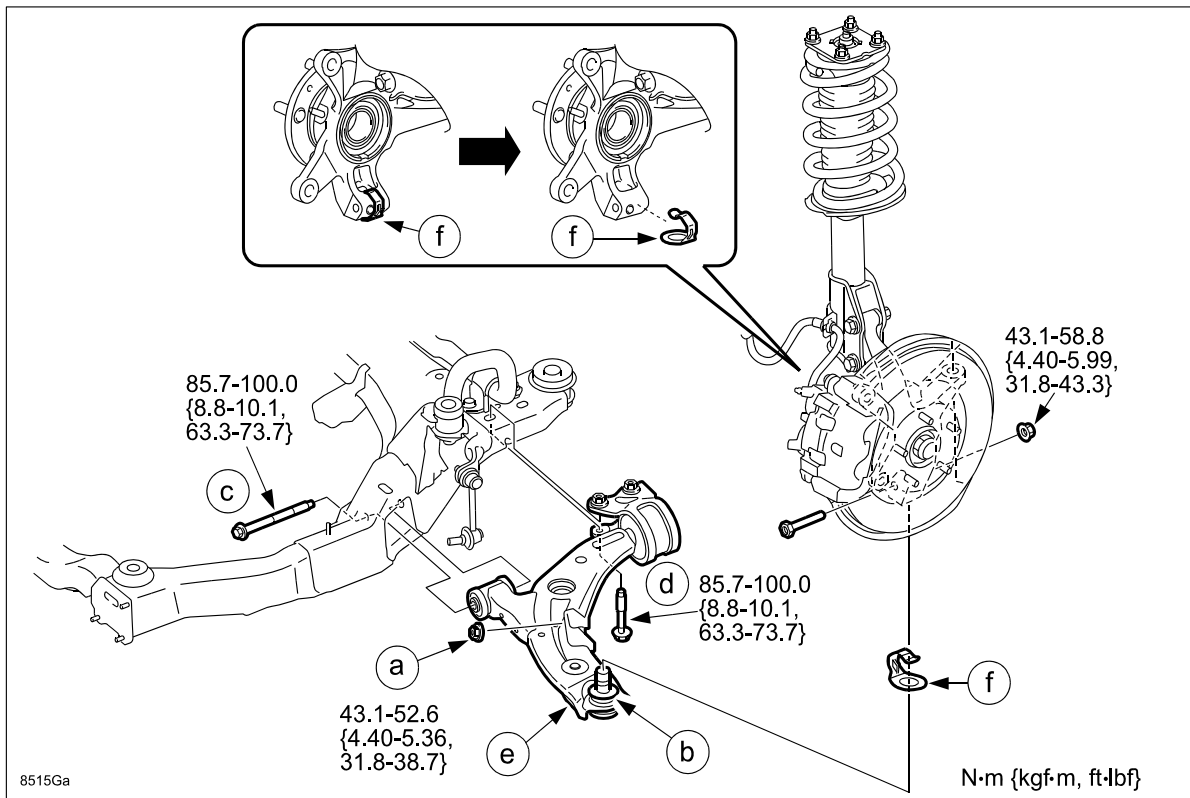
If eMDCS displays:	Campaign Label is:	Action to perform:
RECALL 9716H OPEN	Present	Contact the Warranty Hotline at (877) 727-6626 option 3 to update vehicle history.
	Not present	Proceed to "B. REPAIR PROCEDURE".
RECALL 9716H CLOSED	Present	Return vehicle to inventory or customer.
	Not present	Complete a label and apply to vehicle's hood or bulkhead.
RECALL 9716H is not displayed	Does not apply	Recall does not apply to this vehicle. Return vehicle to inventory or customer.

B. REPAIR PROCEDURE**Removal:**

1. Safely raise the vehicle on a lift.
2. Remove both front wheels.
3. Remove the front lower arm in the order indicated below (a - e):

NOTE: It is NOT necessary to disconnect the ABS wheel-speed sensors and tie-rod end ball joints.

CAUTION: Use a suitable fork tool (as shown below) to separate the lower ball joint. NEVER USE A HAMMER OR MALLOT.



- a. Disconnect the stabilizer control link (lower arm side).
- b. Remove the lower arm ball joint attaching nuts.
- c. Remove the attaching bolt between the lower arm and body (front side).
- d. Remove the attaching bolt between lower arm and body (back side).
- e. Remove the lower arm.

Installation:

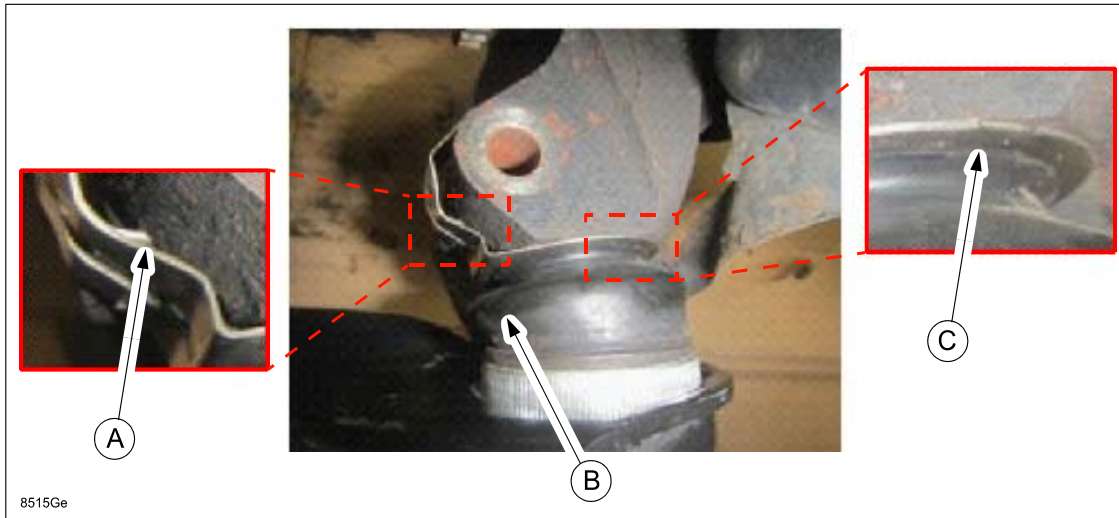
1. Install the new lower arm in the reverse order of removal.

NOTE: When installing the new lower arm, work with another technician to make the installation easier.

CAUTION: Before installing the new lower arm, be sure to install the ball joint cover (f) and ball joint boot to the steering knuckle as shown below.

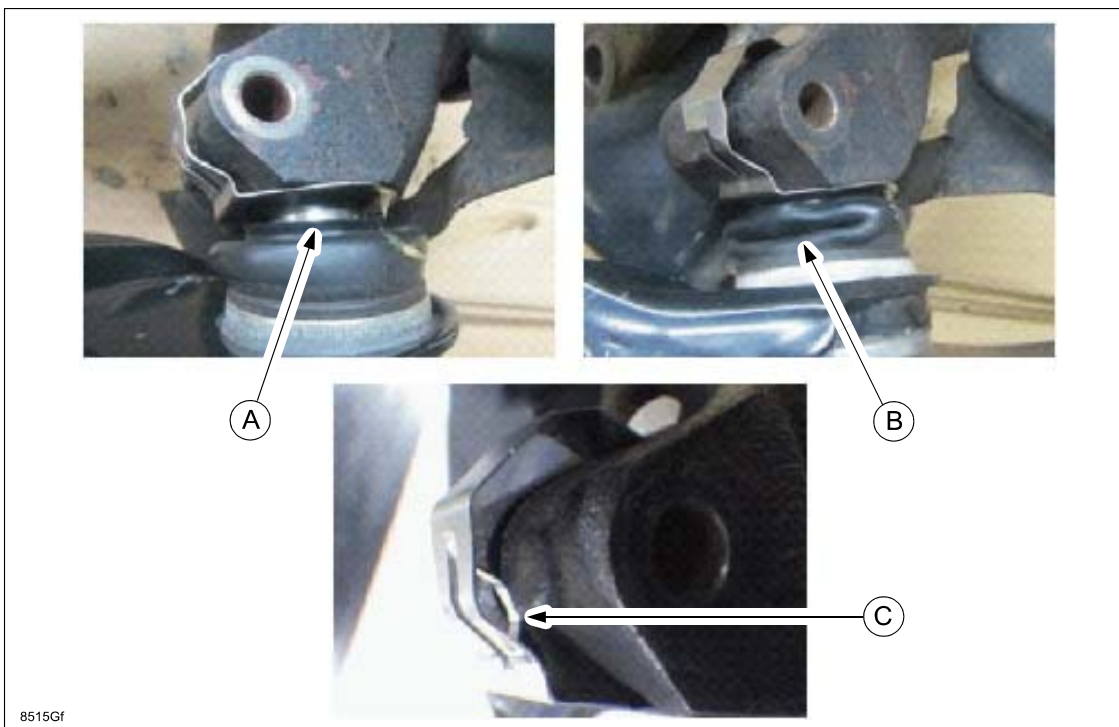
CORRECT:

- The protrusion of the cover (A) is engaged in the notch of the knuckle.
- The boot (B) is NOT caved in.
- The cover (C) is in close contact with the boot all the way around.

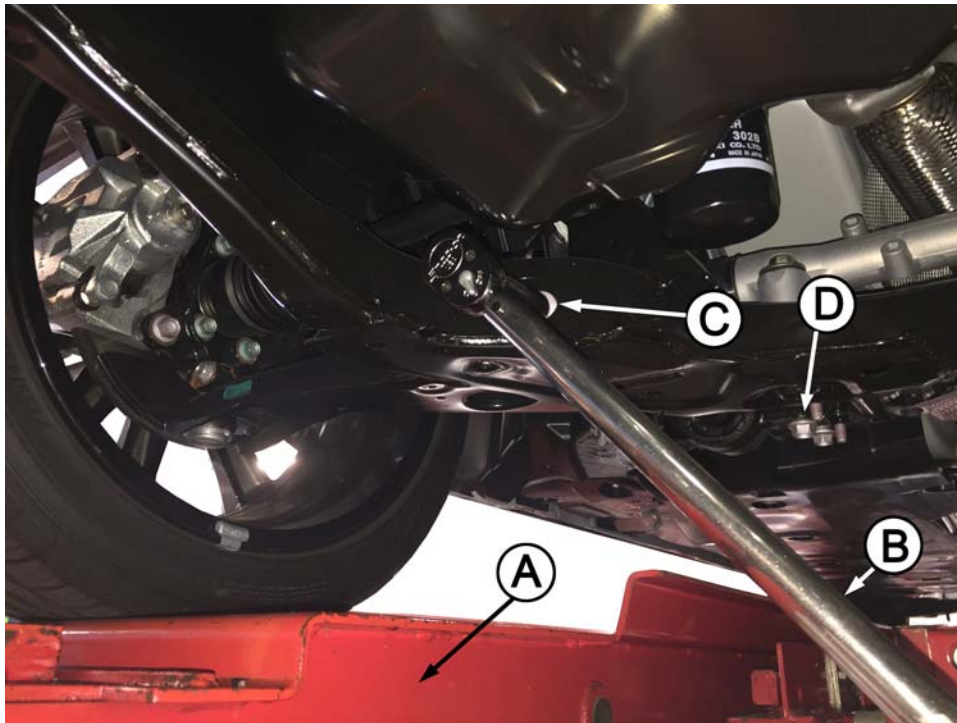


INCORRECT:

- The cover (A) is NOT in close contact with the boot.
- The boot (B) is caved in.
- The protrusion of the cover (C) and the notch of the knuckle are misaligned.



2. Check the tightening torque of the front brake hose banjo bolt:
Tightening Torque: 21.6-29.4 Nm {2.21-2.99 kgf-m, 16.0-21.6 ft-lbf}.
3. Temporarily tighten bolt (c) to **27 Nm {2.8 kgf-m, 20 ft-lbf}**.
CAUTION: The suspension needs to be under the full weight of the vehicle before bolt (c) is fully torqued.
4. Re-install the front tires.
5. Raise the vehicle using a wheel alignment lift rack (A) or lower the vehicle to the ground (to load the suspension). Use a torque wrench (B) to tighten the bolts (C) and (D) to:
Tightening Torque: 85.7-100 Nm {8.8-10.1 kgf-m, 63.3 - 73.7 ft-lbf}.



6. Repeat the Removal and Installation steps for the opposite side suspension.
7. Inspect the front wheel alignment and adjust the front toe.
NOTE: It is NOT necessary to perform camber and caster adjustments.

C. CAMPAIGN LABEL INSTALLATION

- 1. Fill out a blue "Campaign Label" (9999-95-065A-06) with Campaign No: "9716H", your dealer code, today's date.

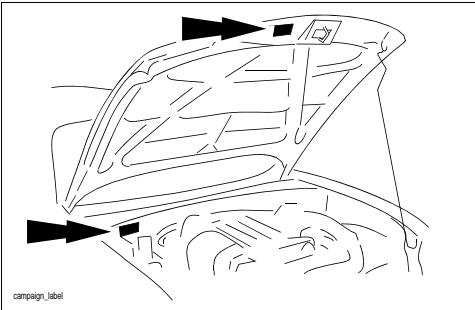
CAMPAIGN LABEL

CAMPAIGN NO: _____
DEALER CODE: _____
DATE: / /

P/N 9999-95-065A-06

1326b

- 2. Affix it to the hood or bulkhead as shown:



- 3. Return the vehicle to customer.