

## Field campaign

<b>Topic</b>	
<b>Market area</b>	Bentley: worldwide (2WBE),Hongkong-Macau (5HK)
<b>Brand</b>	Bentley
<b>Transaction No.</b>	2044749/1
<b>Campaign number</b>	RA55
<b>Note</b>	
<b>Type</b>	
<b>US code</b>	

## Vehicle data

### Continental Flying Spur

#### Sales types

Type	MY	Brand	Designation	Engine code	Gearbox code	Final drive code
3W2*	2007	E		*	*	*
3W2*	2008	E		*	*	*

#### Chassis numbers

Manufacturer	Filler	Type	Filler	MY	Factory	From	To	Prod from	Prod to
SCB	***	3W	*	*	*	048527	061233		

## Documents

Document name
<a href="#">master.xml</a>

## Notes



### Technical background

On Continental Flying Spur vehicles with solar roof of a certain production period the bonding of the solar glass panel on the sun roof frame may be insufficient due to dirt contamination during the production process.

### Remedy

On the affected vehicles the glass panel of the solar roof has to be rebonded.



#### Note

*Before a repair check with the application "Vehicle-specific information*

*If the panel of the solar roof has been replaced in a previous repair, the work does not have to be performed.*

*Please contact Product Support.*

### Customer notification

The keepers of the affected vehicles will be notified in writing.

Please observe the information of the importer.

Make sure all affected vehicles are checked and repaired as part of the workshop visit. Write the Campaign to be performed on the workshop order before the customer signs it.

If the campaign was not performed during a workshop visit, inform the customer straight away about the campaign. Use the sample letter from the campaign description.

Please also inform your new and used car department, so that these vehicles can be checked and if necessary repaired straight away and not only before the sale.

### Warranty

Warranty Type 710 or 790

Labour Operation Code 60 39 41 99

Damage Service Number RA55

Damage Code 00 99

Time 220 TU

Criteria ID 01

### Parts

Order the parts as required.

Quantity	Designation	Part No.:	Note
1 x	1K. window bonder	DH 009 100 A2	
1 x	Cartridge nozzle	443 853 955	
1 x	glass and paint primer	D 009 200 02	
1 x	applicator	D 009 500 25	
	cleaning solution	D 009 401 04	



#### Note

*The published part numbers are correct at the start of the field campaign. As a result of any updates in the*

*parts catalogue since then a listed part number may not be available any more. In such a case the part number listed in the parts catalogue must be used.*

## Parts supply

The genuine required replacement parts should in all cases be ordered from Bentley Motors Limited Crewe or through your regional Bentley parts distribution centre

## Parts despatch control

.

## Questions and answers

### Which fault/damage do the affected vehicles have?

The solar glass panel on the sun roof frame may have been insufficiently bonded.

### What is the cause of the fault?

During the bonding in production the solar glass panel got dirty.

### What repercussions does the damage have?

A loosening of the glass panel during the journey can put following road users at risk.

### Which vehicles are affected by the fault/damage?

Bentley Continental Flying Spur vehicles with solar roof of a limited production period (April 2007 to October 2008) are affected.

### Are all vehicles affected by the fault/damage?

No, only Continental Flying Spur vehicles with the solar glass roof are affected.

### Can I use the vehicle till it is checked/repaired?

Yes, the vehicle can be used until it is repaired. But an appointment for the repair should be made as soon as possible.

### Is there a danger for the consumers?

Yes, the loosening of the glass panel puts following road users at risk. There is a risk of injury.

### Have there been any customer complaints?

No, Bentley is conducting this campaign as a precaution.

### What precisely does the repair involve?

The solar glass roof is additionally bonded.

### Can the driver recognise the fault?

No, the driver cannot recognise the fault.

### How long does the repair take?

The repair of the vehicle takes about three hours.

### Do I have to make an appointment?

Yes, that's important. Your retailer needs to ensure that the necessary parts for your vehicle are available.

---

## Repair instructions

## Technical background

On Continental Flying Spur vehicles with solar roof of a certain production period the bonding of the solar glass panel on the sun roof frame may be insufficient due to dirt contamination during the production process.

## Check

If the vehicle is not already listed as repaired in the "Repair History" (in ElsaPro), check for the presence of a yellow paint spot on the sun roof blind clip (see Figure 1)

## Control



### Note

*If the panel of the solar roof has been replaced in a previous repair the work does not have to be performed.  
Please contact Product Support.*

## Parts

Order the parts as required.

Quantity	Designation	Part No.:	Note
1 x	1K. window bonder	DH 009 100 A2	
1 x	Cartridge nozzle	443 853 955	
1 x	glass and paint primer	D 009 200 02	
1 x	applicator	D 009 500 25	
	cleaning solution	D 009 401 04	



### Note

*The published part numbers are correct at the start of the field campaign. As a result of any updates in the parts catalogue since then a listed part number may not be available any more. In such a case the part number listed in the parts catalogue must be used.*

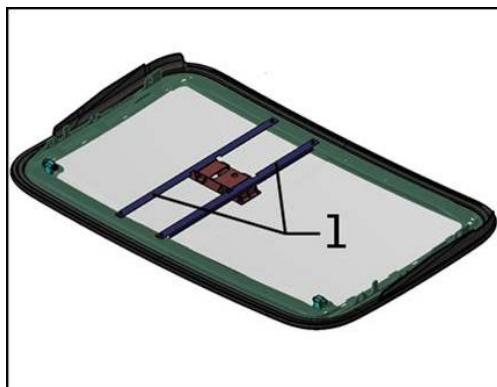
## Tools

The necessary special tools, test equipment and implements are listed in the repair manual.

## Work

Remove the solar glass panel.

=> [Body](#); [Information Body](#); [Rep. Gr. 60 Sliding roof](#); [Sunroof](#); [glass/solar panel-To remove and fit](#)



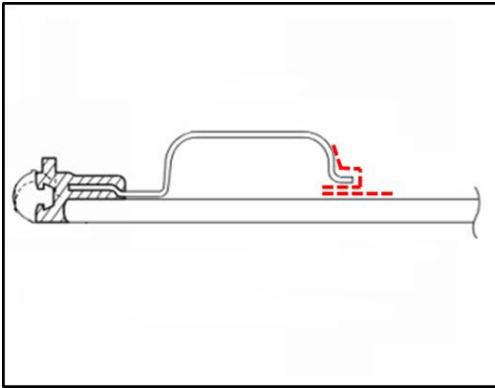
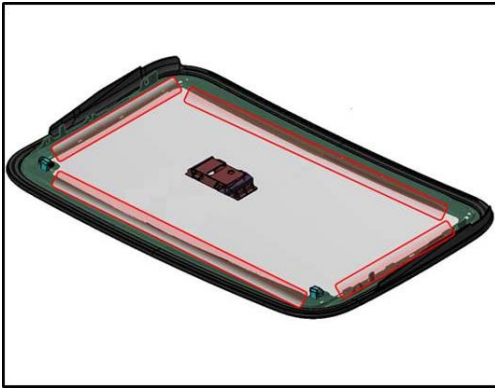
Place the solar glass panel on a suitable surface.

Unscrew the two struts (1) of the DC converter.

### Note

*The DC converter does not have to be removed.*

Thoroughly clean the bonding surfaces (red) with the cleaning solution D 009 401 04.

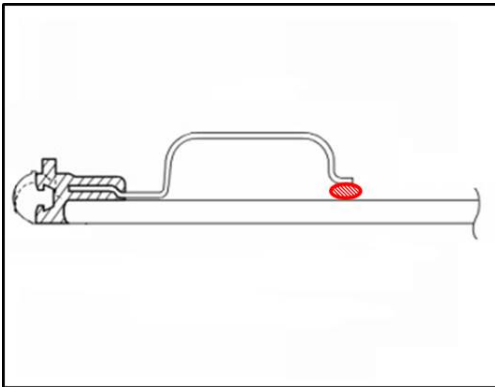


Apply the glass and paint primer with applicator equally on all the red marked bonding surfaces.

(cutaway picture of left and right moulding)

*Note*

*Observe the airing time of 10 minutes for the glass and paint primer.*

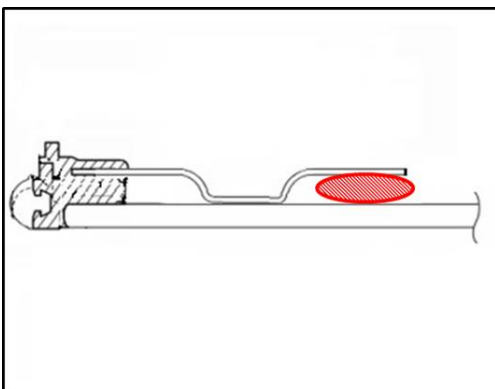


The bonding takes place in two steps:

Step 1:

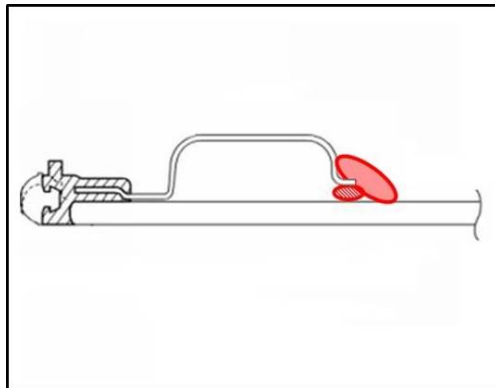
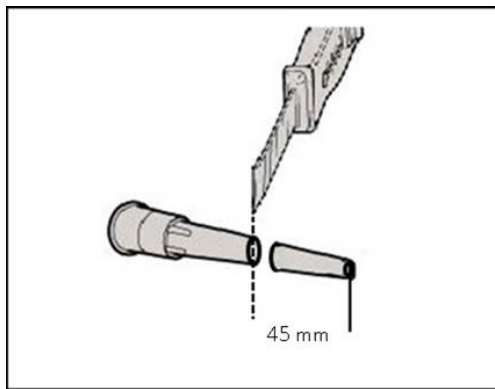
Apply the 1K window bonder with the unshortened application nozzle and fill the gap between glass and frame with a thin adhesive bead.

(cutaway picture: first adhesive bead of left and right moulding)



(cutaway picture: first adhesive bead of front and rear moulding)

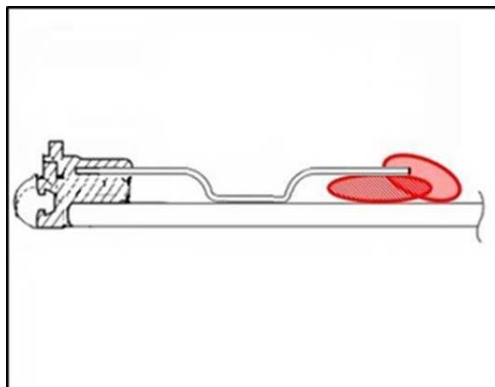
Shorten the application nozzle by 45 mm.



**Step 2:**

Apply the 1K window bonder with the shortened application nozzle and bond the glass with the frame using a wide adhesive bead.

(cutaway picture: second adhesive bead of left and right moulding)



(cutaway picture: second adhesive bead of front and rear moulding)

**Note**

*Observe the minimum airing period for 1 K window bonder.*

Fit the two struts of the DC converter.

Fit and adjust the solar glass panel.

=> body; external body repairs; rep. gr. 60 sun roof; sliding/tilting sun roof with solar roof

Identification

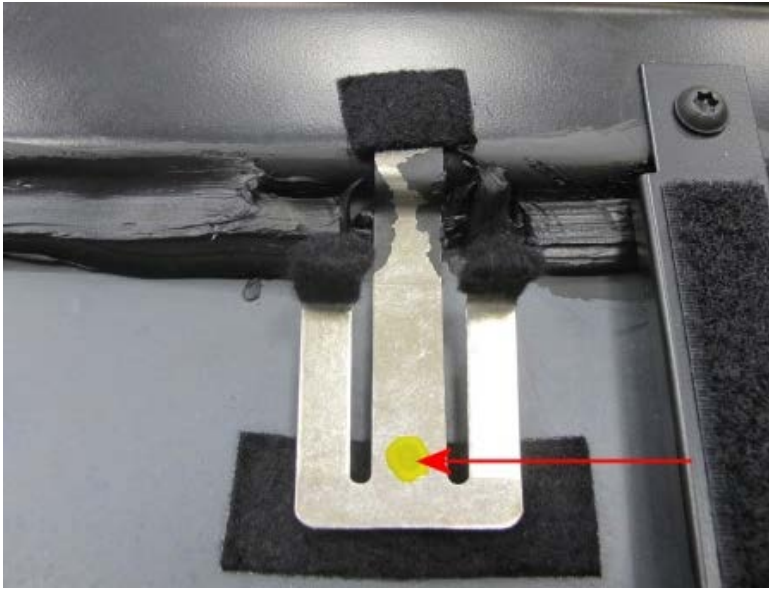


Figure 1

Unclip and slide the sunroof blind back, check for yellow campaign identification mark to sunroof blind clip (see Figure 1)

---

[Repair instructions](#) [Notes](#)