

**2007-2009 B-SERIES - PASSENGER AIR BAG SAFETY RECALL 2118A**

August 13, 2024. Added Do Not Drive designation for this campaign. Warranty information guidelines for rentals and towing were also updated.



ATTENTION ALL MAZDA DEALERS:

THIS CAMPAIGN HAS BEEN DESIGNATED AS A DO NOT DRIVE RECALL. IF THE CUSTOMER REQUESTS TO TOW THE VEHICLE TO THE DEALER, PLEASE HONOR THE REQUEST AND REVIEW GUIDELIENS FOR CLAIMING TOWING BELOW. THE VEHICLE CAN ALSO BE TOWED BACK TO THE CUSTOMER HOME/WORK, ETC.. UPON REQUEST. ALL TOWS ABOVE \$1,000 WILL REQUIRE WARRANTY PREAUTH GOODWILL PRIOR TO TOWING.

MOBILE REPAIR BY MAZDA DEALER: THIS OPTION IS ENCOURAGED AND CLAIM INFORMATION IS CONTAINED IN EACH TAKATA RECALL. IF ADDITONAL COSTS ARE NEEDED TO COMPLETE A MOBILE REPAIR PLEASE FILL OUT DEALER RECALL HELP ON ONEMAZDA.

PLEASE DO NOT DENY A CUSTOMER REQUEST TO TOW WITHOUT SPEAKING WITH YOUR DISTRICT SERVICE MANAGER OR FILL OUT DEALER RECALL HELP ON ONEMAZDA.

LOANER VEHICLE: MCVP / RENTALS: A CUSTOMER CAN RECEIVE A MCVP OR RENTAL DURING THE REPAIR PERIOD, BUT MUST PICK UP THE VEHICLE WITHIN 48 HOURS OF THE REPAIR. ALL RENTALS GREATER THAN THE 2 DAY RENTAL POLICY MUST BE PRE-APPROVED UNLESS THE DEALER IS THE DSA TIER DOES NOT REQUIRE AUTHORIZATION.

UNREPAIRABLE VEHICLES: FILL OUT DEALER RECALL HELP ON ONEMAZDA WITH CLEAR PHOTOS AND DETAILED EXPLANATION ON WHY YOU CANNOT REPAIR. DO NOT LET THE CUSTOMER LEAVE UNTIL YOU HEAR BACK FROM THE RECALL HELP TEAM.

**A. VEHICLE INSPECTION PROCEDURE**

1. Verify that the vehicle is within the following ranges:

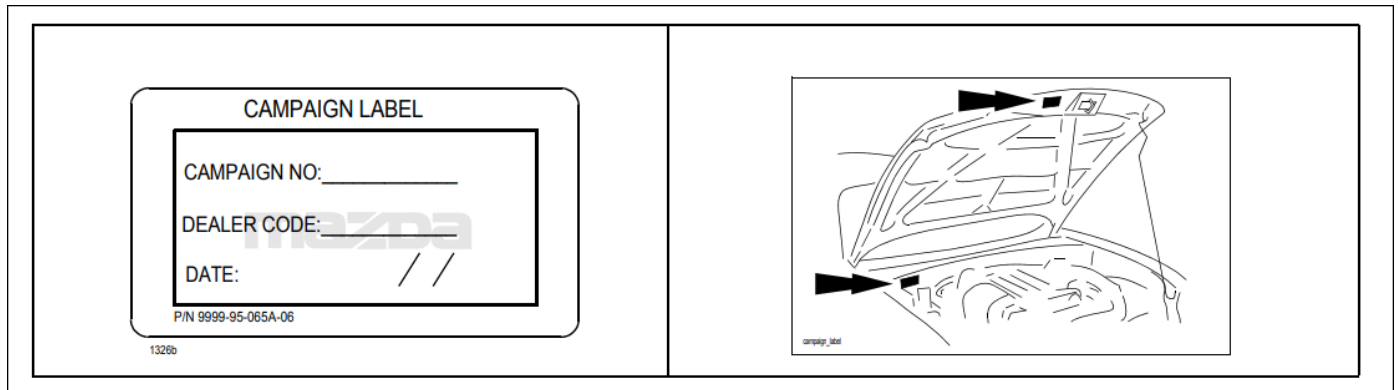
Model	VIN
2007-2009 B-Series	All

- If the vehicle is within the above ranges, proceed to Step 2.
- If the vehicle is not within the above ranges, return vehicle to the customer or inventory.

2. Perform a Warranty Vehicle Inquiry using your eMDCS System and inspect vehicle for Campaign Label **Recall**

**2118A** attached to the vehicle’s hood or bulkhead. Refer to eMDCS System - Warranty Vehicle Inquiry Results table below.

**NOTE:** Be sure to verify Recall number as the vehicle may have multiple Recall labels.



**eMDCS System - Warranty Vehicle Inquiry Results:**

If eMDCS displays:	Campaign Label is:	Action to perform:
RECALL 2118A OPEN	Present	Contact the Warranty Hotline at (877) 727-6626 option 2 to update vehicle.
	Not present	Proceed to “B. REPAIR PROCEDURE”.
RECALL 2118A CLOSED	Present	Return vehicle to inventory or customer.
	Not present	Proceed to “C. CAMPAIGN LABEL INSTALLATION”.
RECALL 2118A are not displayed	Does not apply	Recall does not apply to this vehicle. Return vehicle to inventory or customer.

**IMPORTANT:** Be sure to follow the packing and shipping instructions provided in the carton and in Air Bag Inflator Return Instructions.

**CAUTION:**

- Use the same carton which was used to deliver a new inflator. It is a specialized box that is internationally accepted for shipping an inflator.

## PARTS AND WARRANTY INFORMATION

### SAFETY RECALL 2118A

- Pack the old inflator in the box exactly in the same manner as the new inflator was packed.

#### Inflator Part Box Contents:

**Note: Please inspect the contents of the box and make sure that all contents are in the box PRIOR to beginning any repairs. If not, please return the parts immediately.**

#### Please refer to the box contents figure below:

- 1 – Inflator
- 2 – Tail End Cap
- 3 – Retaining bracket
- 4 – Front End Cap
- 5 – Wiring Harness
- 6 – Shorting clip (red item in plastic bag) and mounting nuts (Qty. = 4 in plastic bag)



## B. REPAIR PROCEDURE

### Overview:

Remove the passenger airbag from the vehicle and replace only the inflator portion. **The removed inflator will be placed into the packaging from the new inflator and shipped to Takata using the included return shipping label.**

## PASSENGER AIRBAG INFLATOR REPLACEMENT

### Air Bag Module

#### Removal: **WARNING:**

- Perform the replacement in a clean environment. Oil, grease, water, etc. on components may cause the air bag modules to fail to deploy in an accident, which may cause serious injury. Do not allow oil, grease, water, etc., on components.
- Inserting a screwdriver, etc., into the connector of an air bag module may damage the connector and cause the air bag module to deploy improperly, which may cause serious injury. Do not insert any foreign objects into the connector.
- Do not make an attempt to directly supply electrical power to the module and the inflator.
- Keep the module facing of the pad surface upwards at all times, except during replacement.
- Do not use the module and new inflator if they were dropped on the ground.
- Avoid module and inflator exposure to temperatures of 194 degrees F (90 degrees C) or more.

**WARNING: Failure to follow the instructions and warnings in the MGSS may result in injury.**

**NOTE:** The ignition must remain **OFF** until this service procedure is completed.

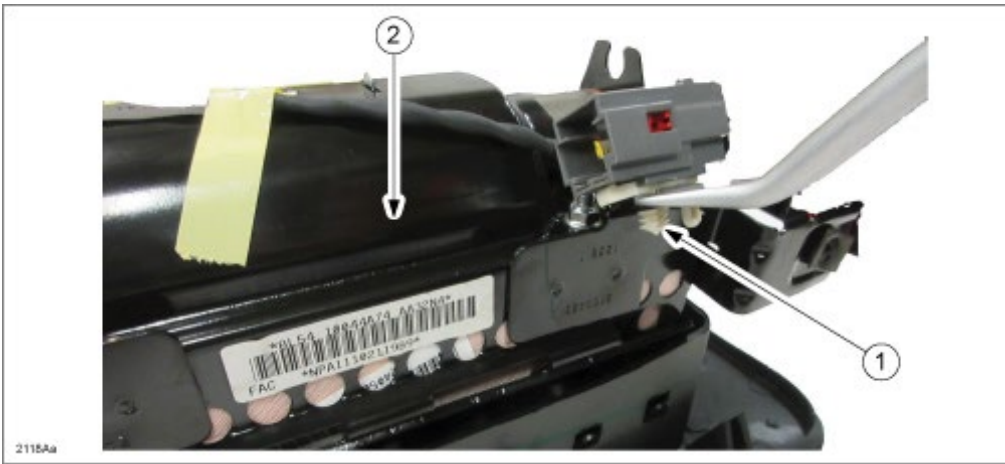
1. Turn the ignition switch to the OFF position.
2. Record the customer's preset radio stations.
3. Disconnect the negative battery cable and wait for one (1) minute or more.
4. Remove the passenger air bag module. Refer to MGSS on MXConnect (PASSENGER AIR BAG MODULE REMOVAL / INSTALLATION).
5. Lay a protective cloth on the work bench, then place the air bag module on it to avoid any damage or scratches to the surface.

**WARNING:** Do not allow any debris on or around air bag once the inflator is removed.

#### Inflator Replacement:

1. Remove the wiring harness connector retainer (1) from the passenger airbag assembly (2)

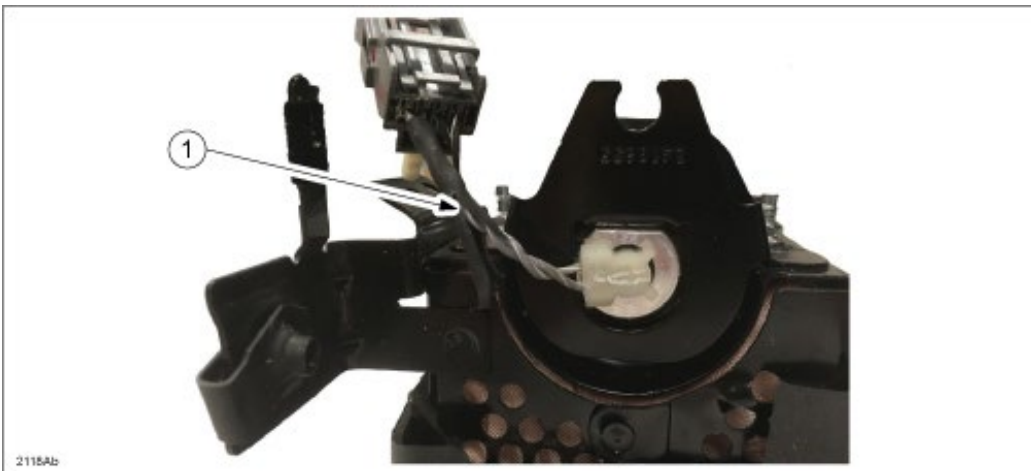
#### FIGURE 1



**NOTE:** Carry out this step on the shorter wire on the end opposite of the airbag inflator retaining bracket.

2. Remove the black conduit from the passenger airbag assembly wire harness in the area shown (1).

**FIGURE 2**



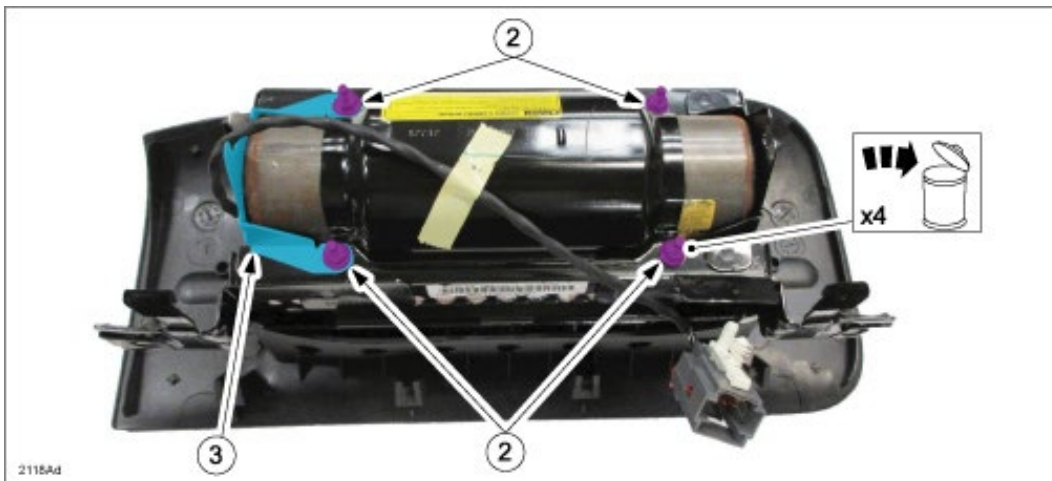
3. Position the shorting clip onto the harness wires, and crimp the shorting clip (3) together one side at a time using pliers (1).
4. Cut the harness wires between the shorting clip and the harness connector (2).

**FIGURE 3**



5. Remove and discard the 4 passenger airbag inflator retaining bracket (3) nuts and the retaining bracket. Retaining nuts (2), Total Qty = 4 and Bracket (3). **Do Not Use Any Air Tools to Remove the Retaining Nuts.**

**FIGURE 4**

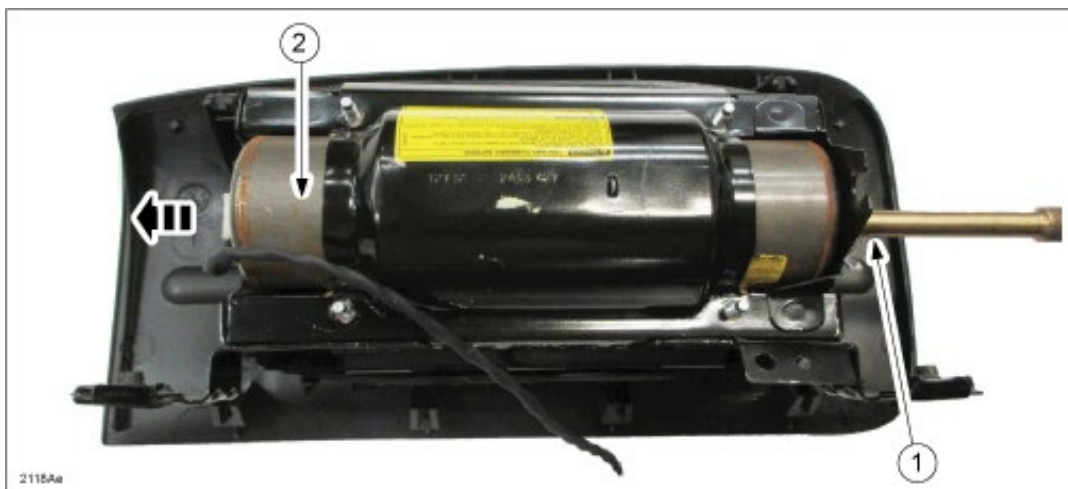


**WARNING:** Do not allow any debris on or around the airbag once the inflator is removed.

6. With an assistant holding the passenger airbag assembly, remove the inflator (2) from the assembly by pushing outward on the inflator. Set the airbag inflator aside for return shipping.

**NOTE:** If required, use of a brass punch (1) is permitted (only at the location shown) to free the inflator from its mounted position.

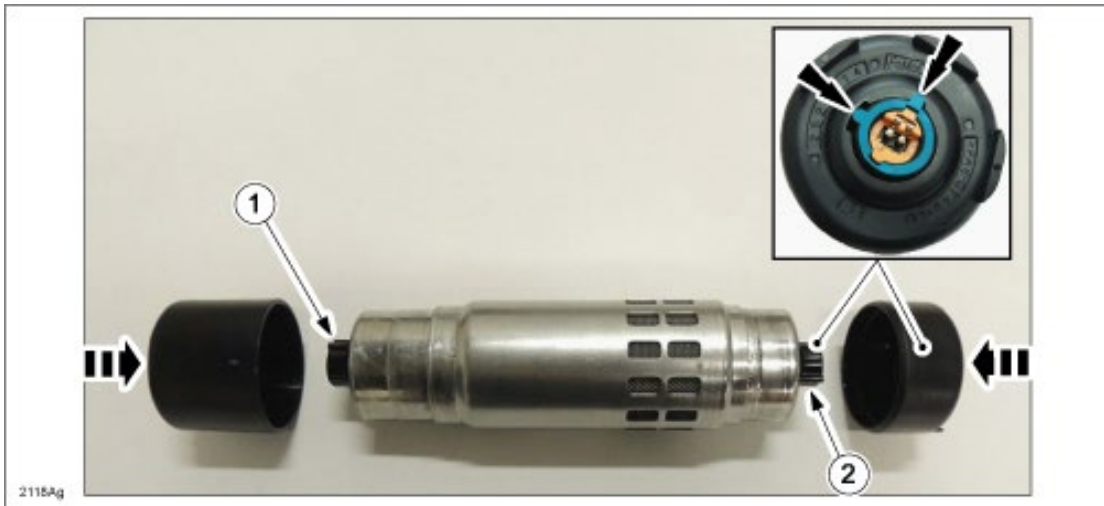
**FIGURE 5**



7. **PLEASE READ:** Both new inflator end caps (1)-FRONT & (2)-TAIL in Figure 6, are specific to their respective ends of the inflator and must be fully seated. Also, the front end cap (1) does not have an alignment tab and may be installed in any orientation. Make sure the tail end cap (2) is fully seated or you will not be able to install the inflator retaining bracket.

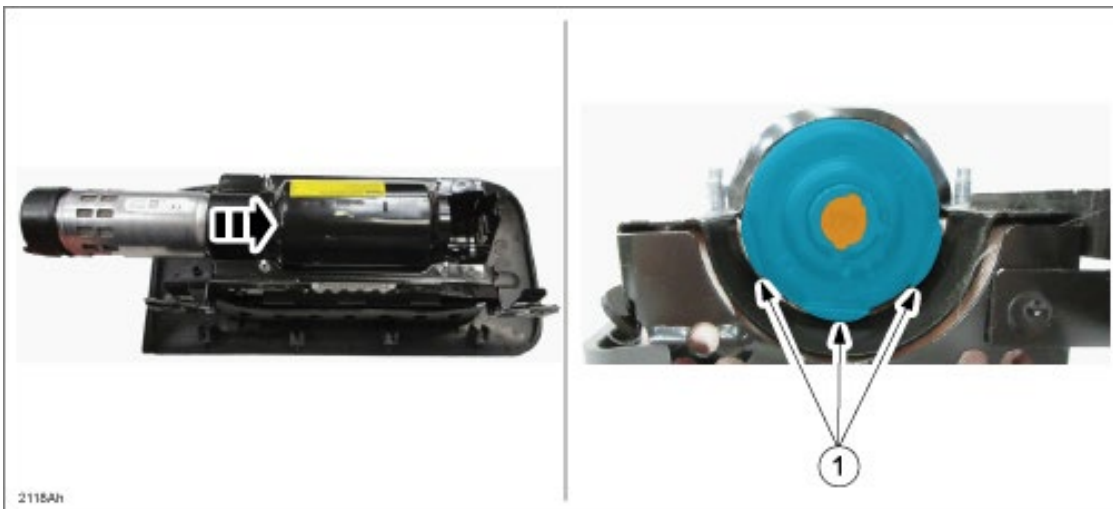
Install both new inflator end caps making sure the alignment feature on the cap nearest the inflator retaining bracket is properly oriented.

**FIGURE 6**



8. Install the inflator into the passenger airbag assembly with the orange connector end facing out. Align the three tabs (1), on the cap nearest the inflator retaining bracket with the airbag module lower channel (facing down).

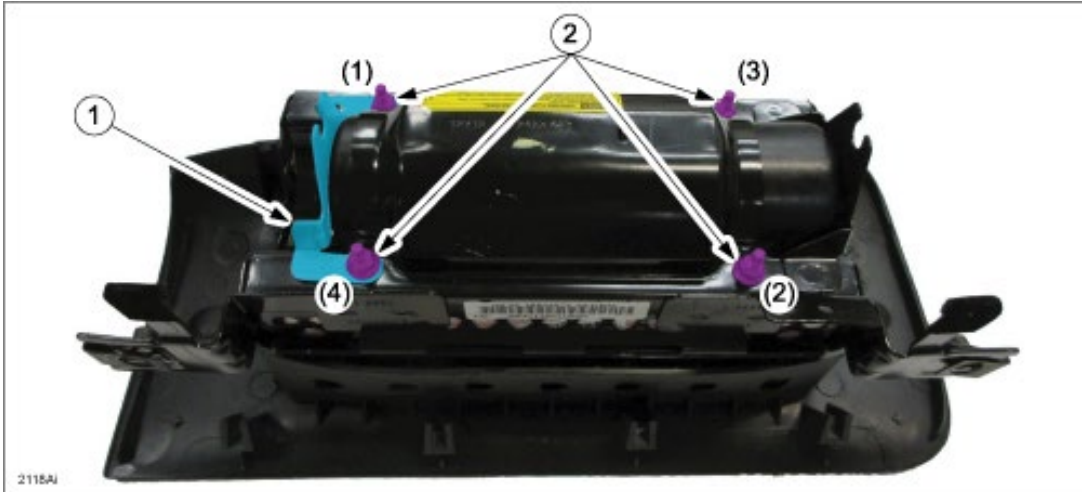
**FIGURE 7**



**NOTE:** If the inflator retaining bracket is unable to be installed, ensure the inflator tail end cap is fully seated.

9. Install the new passenger airbag inflator retaining bracket (1) and new nuts (2) Total Qty = 4.
  - Torque the new retaining nuts in the sequence shown below. Tighten to 4 Nm (35 lb in). **Do Not Use Any Air Tools to Install the Retaining Nuts.**

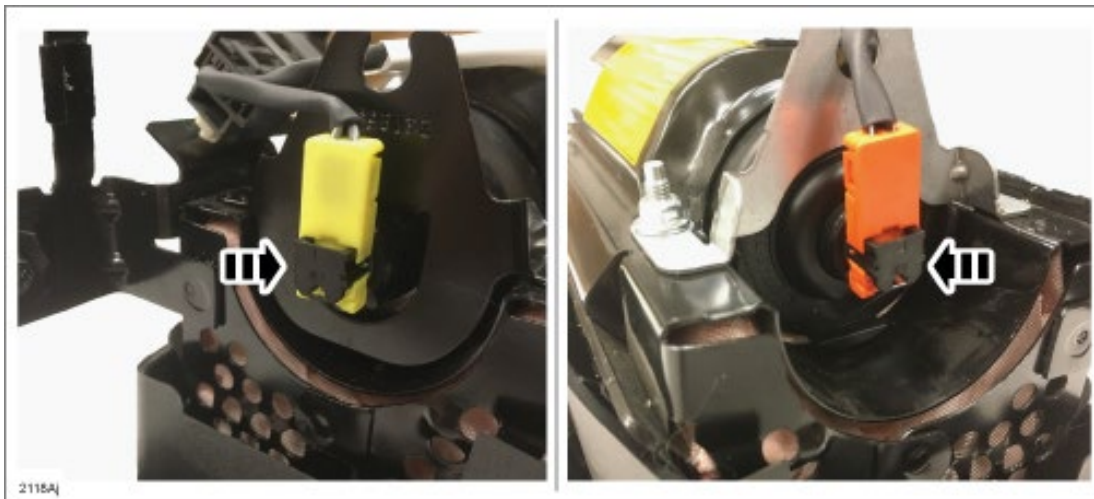
FIGURE 8



10. Align the T-shape index on both the wiring harness electrical connector and the airbag inflator. Install the **new** wiring harness onto the passenger airbag module and connect to both sides of the inflator and fully seat the orange and yellow tabs. Ensure that the Orange connector is installed in Orange receiver of the inflator and the Yellow connector is installed in the Yellow receiver of the inflator. **The colors must match.** Once seated, depress the black locking tab to secure the connector.

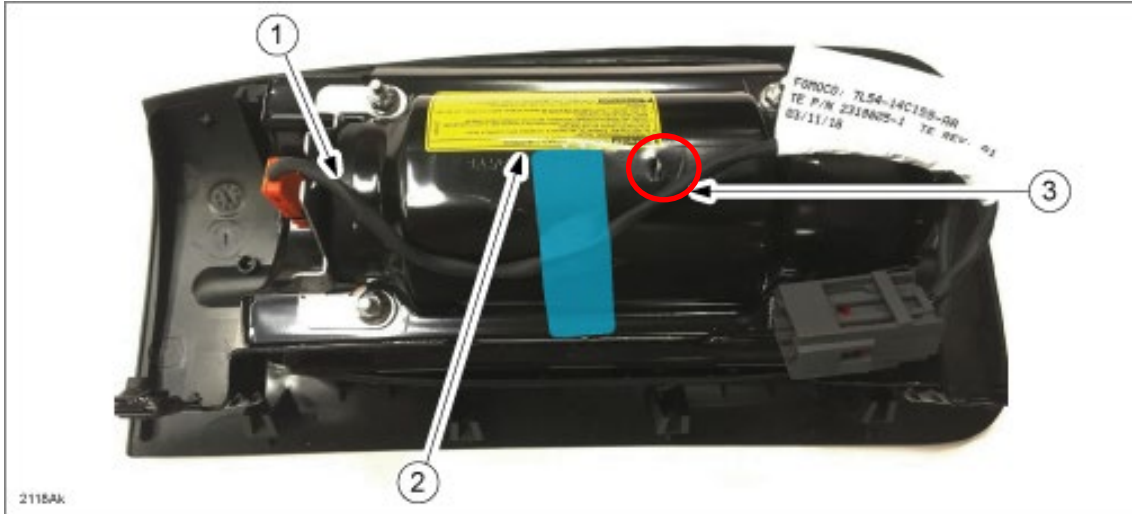
**NOTE:** Pull gently on the wiring harness to ensure it is properly seated.

FIGURE 9



11. At the top of the inflator label, install the **new** tape (2) right at the line of the label downward to the **new** wiring harness (1) and airbag assembly, do not cover the airbag warning label with the new tape. Route the harness so it **DOES NOT** come in contact with the tab (3).

**FIGURE 10**



12. Package the replaced inflator in the new part box using the instructions provided in MGSS or in the original inflator box

**Air Bag Module Reinstallation:**

1. Install the passenger air bag module. Refer to MGSS online (PASSENGER AIR BAG MODULE REMOVAL / INSTALLATION).
2. Reconnect the negative battery cable.
3. Turn the ignition switch to the ON position.
4. Verify that the air bag system warning light illuminates for approx. 6 sec., then goes out.

**NOTE:** If the air bag system warning light does not operate in the manner described above, there is a malfunction in the system. Inspect the system following the on-board diagnostic system procedure according to MGSS on MXConnect.

5. Re-enter the customer's preset radio stations.
6. Proceed to "C. CAMPAIGN LABEL INSTALLATION".

### C. CAMPAIGN LABEL INSTALLATION

1. Fill out a blue "Campaign Label" (9999-95-065A-06) with Campaign No: "2118A", your dealer code, and today's date.

CAMPAIGN LABEL

CAMPAIGN NO: \_\_\_\_\_

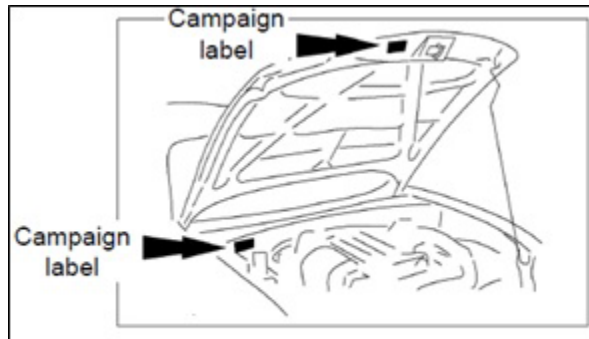
DEALER CODE: \_\_\_\_\_

DATE: // /

P/N 9999-95-065A-05

1326b

2. Affix it to the hood or bulkhead as shown:



3. Return the vehicle to customer.