



RECALL CAMPAIGN BULLETIN

Reference:

NTB16-062

Date:

June 21, 2016

VOLUNTARY SAFETY RECALL CAMPAIGN 2013-2014 PATHFINDER; STOP LAMP SWITCH ADJUSTMENT

CAMPAIGN ID #: PC464

NHTSA #: 16V-380

APPLIED VEHICLES: 2013 – 2014 Pathfinder (R52)

Check Service COMM to confirm campaign eligibility.

INTRODUCTION

Nissan is conducting a voluntary safety recall campaign on certain specific model year 2013-2014 Pathfinder vehicles to inspect the stop lamp switch adjustment. If necessary, the stop lamp switch will be adjusted and the stop lamp relay will be replaced. This service will be performed at no charge for parts or labor.

IDENTIFICATION NUMBER

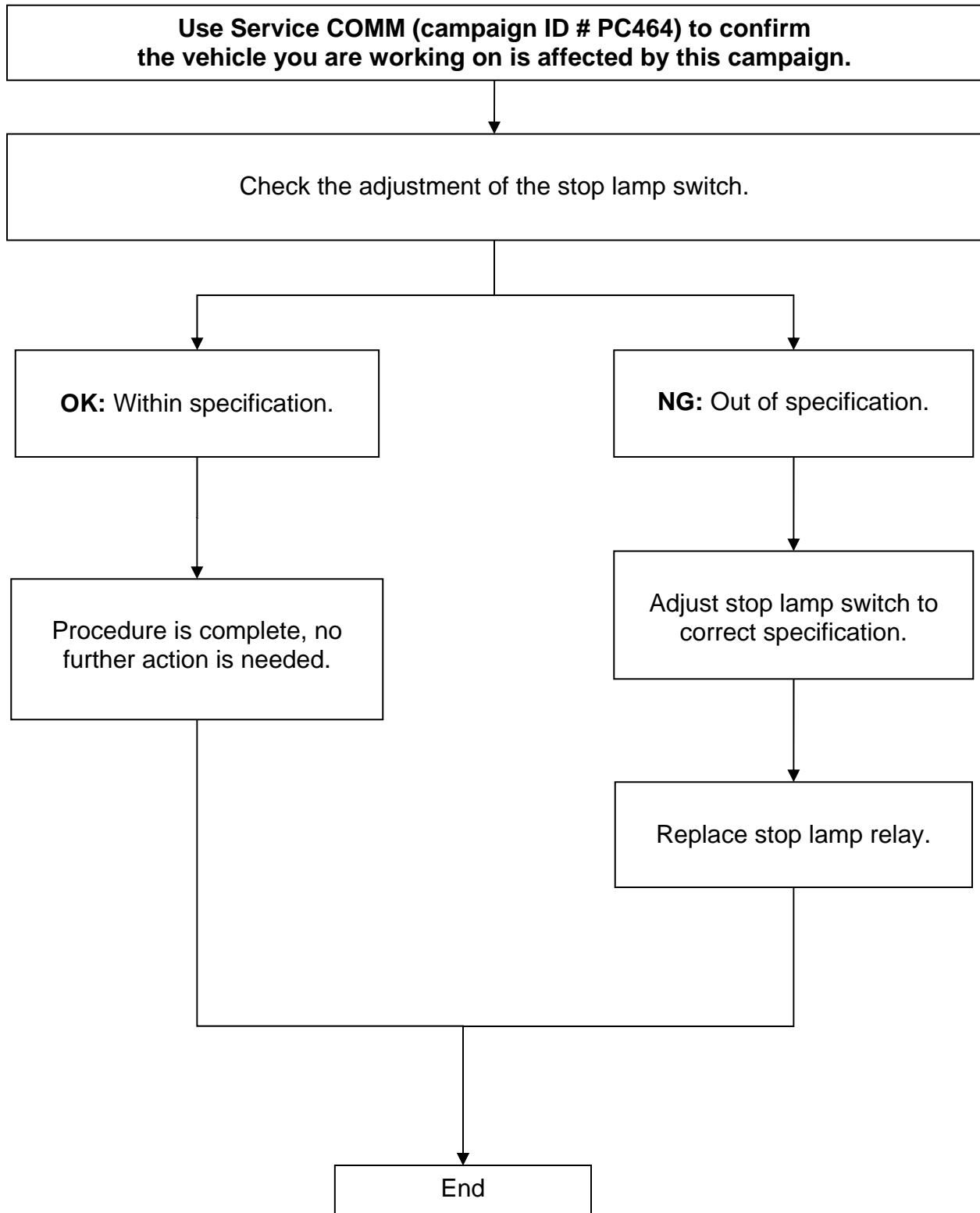
Nissan has assigned identification number PC464 to this campaign. This number must appear on all communications and documentation of any nature dealing with this campaign.

DEALER RESPONSIBILITY

It is the dealer's responsibility to check Service COMM for the campaign status on each vehicle falling within the range of this voluntary safety recall campaign which for any reason enters the service department. This includes vehicles purchased from private parties or presented by transient (tourist) owners and vehicles in a dealer's inventory. **Federal law requires that new vehicles in dealer inventory which are the subject of a safety recall must be corrected prior to sale. Failure to do so can result in civil penalties by the National Highway Traffic Safety Administration.** While federal law applies only to new vehicles, Nissan strongly encourages dealers to correct any used vehicles in their inventory before they are retailed.

Nissan Bulletins are intended for use by qualified technicians, not 'do-it-yourselfers'. Qualified technicians are properly trained individuals who have the equipment, tools, safety instruction, and know-how to do a job properly and safely. NOTE: If you believe that a described condition may apply to a particular vehicle, DO NOT assume that it does. See your Nissan dealer to determine if this applies to your vehicle.

REPAIR OVERVIEW



SERVICE PROCEDURE

1. Look under the dash on the driver side.
2. Locate the stop lamp switch (see Figure 1).
3. Check the adjustment of the stop lamp switch (see Figure 1 below and Figure 2 on the next page):
 - Make sure the brake pedal is not depressed.
 - The clearance between the body of the stop lamp switch (threaded part) and the brake pedal arm should be 0.74 to 1.96 mm (0.0291 to 0.0772 inch).
 - Measure the clearance using a feeler gauge or other suitable measuring tool.

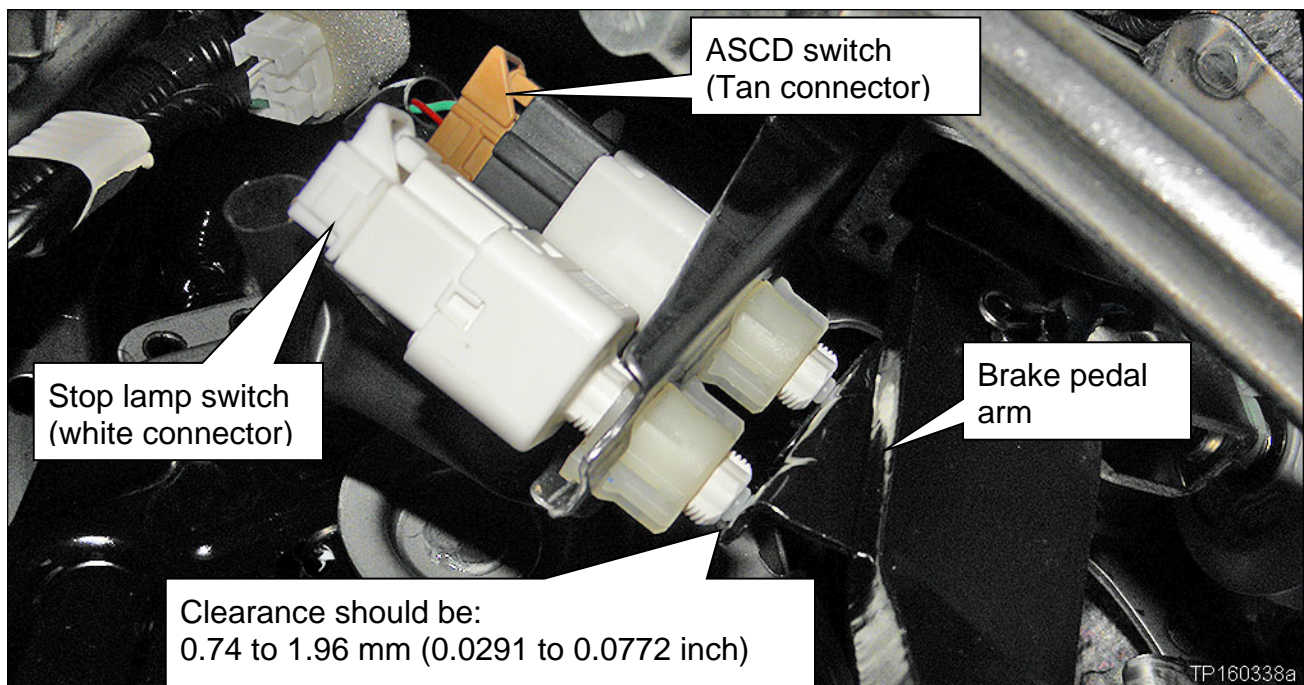


Figure 1

OK: Clearance is within specification

- Procedure is complete, no further action is needed.

NG: Clearance is out of specification

Continue with the Service Procedure:

- Adjust the stop lamp switch (page 5).
- Replace the stop lamp relay (page 7).

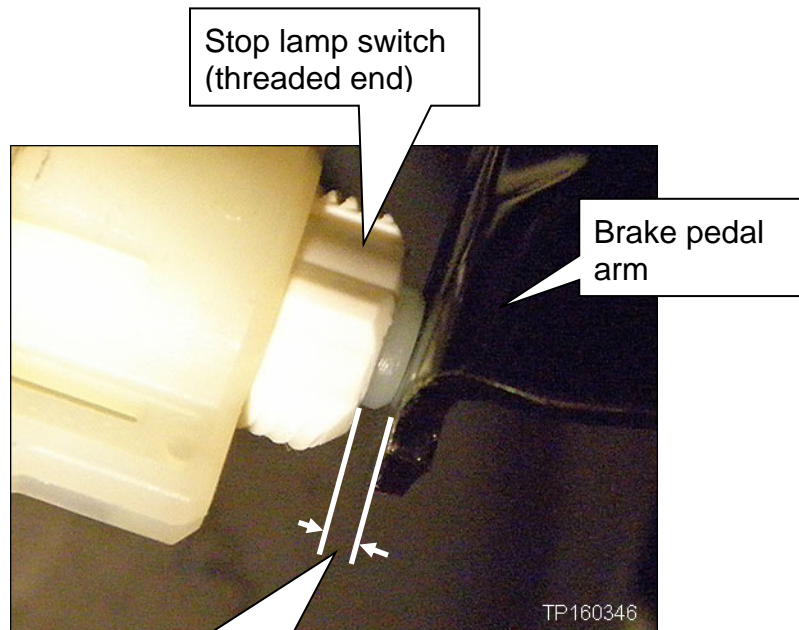


Figure 2

Clearance should be:
0.74 to 1.96 mm (0.0291 to 0.0772 inch)

Adjust Stop Lamp Switch

1. Turn the switch counterclockwise about 45 degrees to unlock it.

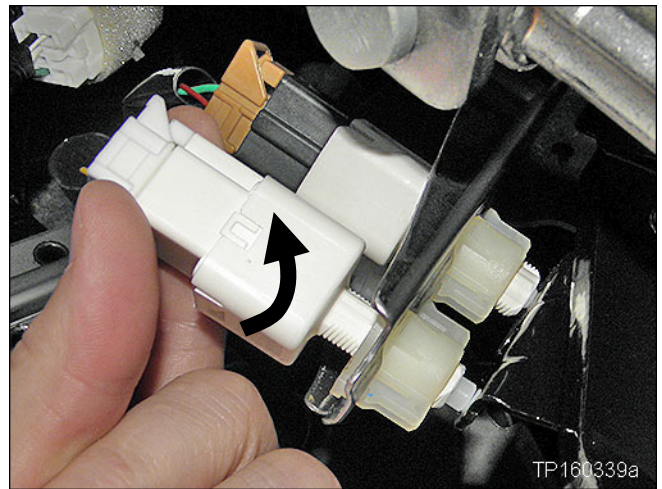


Figure 3

2. Push the switch as far as possible towards the brake pedal arm.
 - Make sure brake pedal is not depressed.

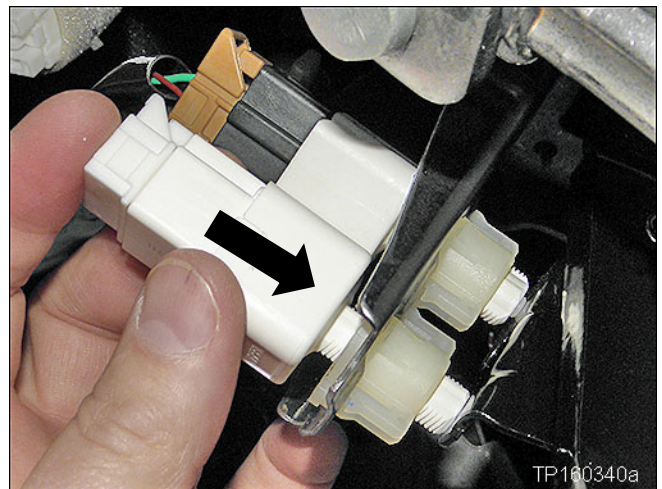


Figure 4

3. Turn the switch clockwise about 45 degrees to lock it in place.

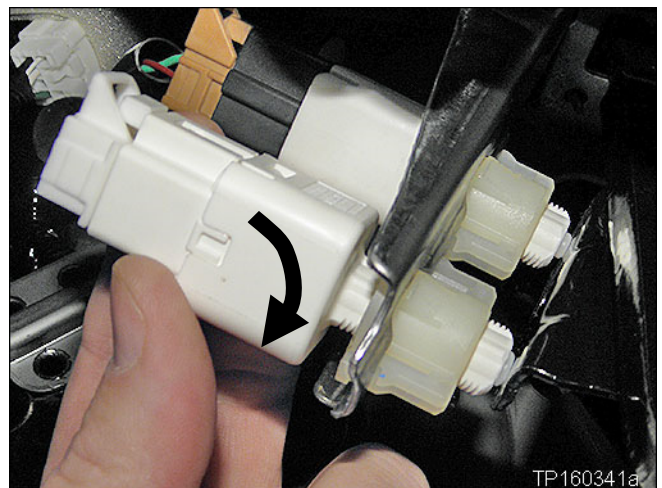


Figure 5

4. Make sure the adjustment/clearance is correct (see Figure 6).

- Make sure the brake pedal is not depressed.
- The clearance between the body of the stop lamp switch (threaded part) and the brake pedal arm should be 0.74 to 1.96 mm (0.0291 to 0.0772 inch).
- Measure the clearance using a feeler gauge or other suitable measuring tool.

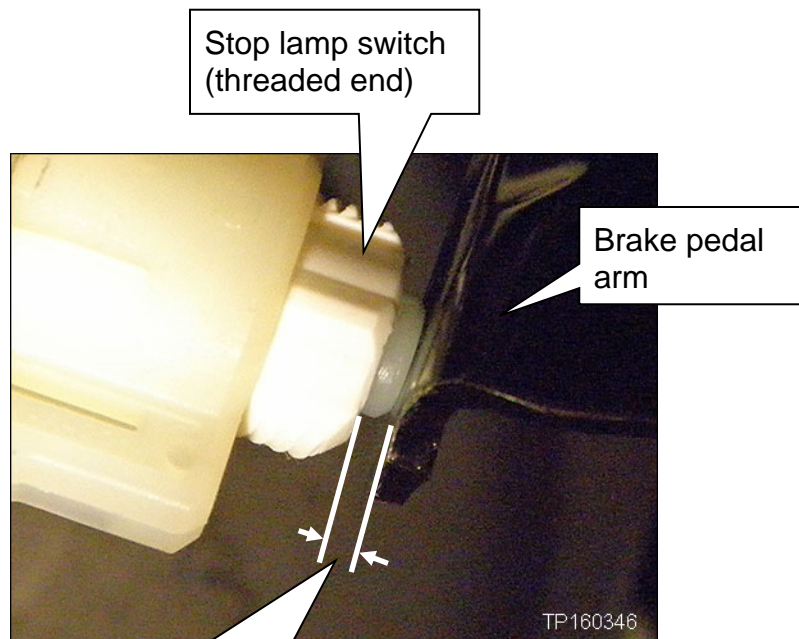


Figure 6

Clearance should be:
0.74 to 1.96 mm (0.0291 to 0.0772 inch)

Replace the Stop Lamp Relay

1. Open the engine hood and locate the fuse and relay box.
 - Fuse and relay box is located on the passenger side near the cowl.

2. Remove the fuse and relay box cover.

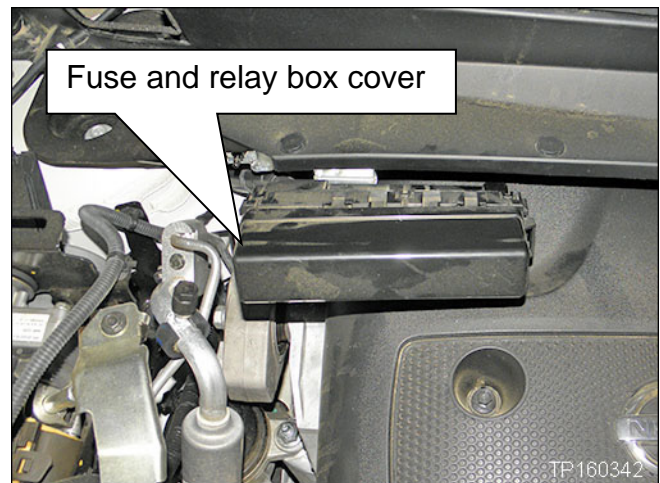


Figure 7

3. Remove the stop lamp relay.
 - Relay lock must be released with a suitable tool.
4. Install a new stop lamp relay.
 - New stop lamp relay is listed in the Parts Information.

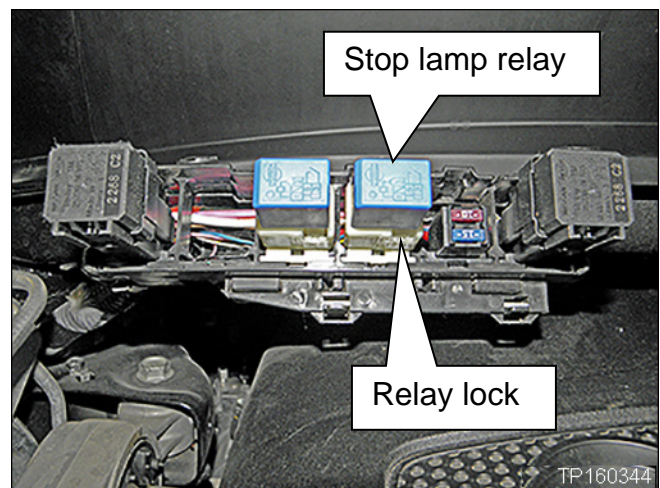


Figure 8

5. Reinstall the fuse and relay box cover.

6. Operate the brake pedal (press and release) a few times, and confirm the stop lamps operate correctly.

PARTS INFORMATION

DESCRIPTION	PART NUMBER	QUANTITY
Stop Lamp Relay	25230 – 79917	1

CLAIMS INFORMATION

Submit a Campaign (CM) line claim using the following claims coding:

CAMPAIGN (CM) I.D. #	DESCRIPTION	OP CODE	FRT
PC464	Inspect Stop Lamp Switch OK Condition	PC4640	0.2 hrs.
	Inspect Stop Lamp Switch. Adjust Stop Lamp Switch and Replace Stop Lamp Relay	PC4641	0.2 hrs.

