

**TECHNICAL INSTRUCTIONS**  
**FOR**  
**SAFETY RECALL G0S**  
**FRONT STRUT BEARING INSPECTION**  
**CERTAIN 2015 MY YARIS HATCHBACK**

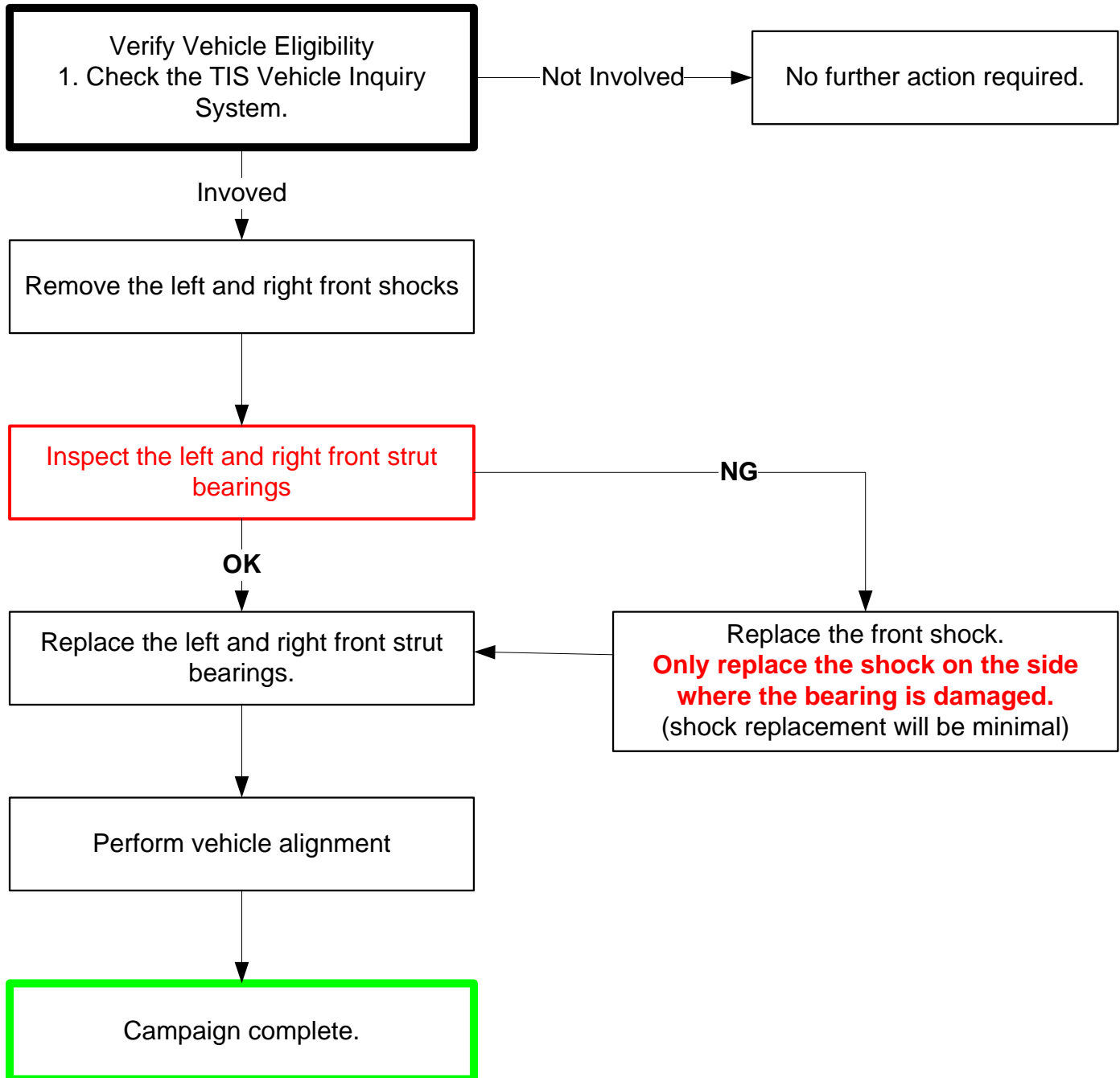
The repair quality of covered vehicles is extremely important to Toyota. All dealership technicians performing this recall are required to successfully complete the most current version of the E-Learning course “Safety Recall and Service Campaign Essentials”. To ensure that all vehicles have the repair performed correctly; technicians performing this recall repair are required to currently hold at least one of the following certification levels:

- Toyota Certified Chassis
- Toyota Expert Chassis
- Master
- Master Diagnostic Technicians

It is the dealership’s responsibility to select technicians with the above certification level or greater to perform this recall repair. Carefully review your resources, the technician skill level, and ability before assigning technicians to this repair. It is important to consider technician days off and vacation schedules to ensure there are properly trained technicians available to perform this repair at all times.

## I. OPERATION FLOW CHART

The flow chart is for reference only. **DO NOT** use it in place of the full technical instructions. Follow **ALL** steps as outlined in the full technical instructions to confirm the campaign is completed correctly.



## II. IDENTIFICATION OF AFFECTED VEHICLES

### A. COVERED VIN RANGE

- Check the TIS Vehicle Inquiry System to confirm the VIN is involved in this Safety Recall [or LSC/CSC] and that the campaign has not already been completed prior to dealer shipment or by another dealer.
- TMS warranty will not reimburse dealers for repairs conducted on vehicles that are not affected or were completed by another dealer.

### III. PREPARATION

#### A. PARTS

Part Number	Part Description	Quantity
48619-0D011	Strut Mounting Bearing	2
90179-12145	Nut (For Front Support to Front Shock Absorber)	4

The following parts will only be needed if a damaged bearing is found										
48609-0D041	Front Suspension Support Sub-assembly	1 or 2								
	Right Front Shock Absorber	1								
	<table border="1"> <thead> <tr> <th>Part Number</th> <th>Part Description</th> </tr> </thead> <tbody> <tr> <td>48510-0DA20</td> <td>Standard specs</td> </tr> <tr> <td>48510-0D880</td> <td>S grade</td> </tr> <tr> <td>48510-0DA30</td> <td>Rough Road specs (Mexico only)</td> </tr> </tbody> </table>	Part Number	Part Description	48510-0DA20	Standard specs	48510-0D880	S grade	48510-0DA30	Rough Road specs (Mexico only)	
Part Number	Part Description									
48510-0DA20	Standard specs									
48510-0D880	S grade									
48510-0DA30	Rough Road specs (Mexico only)									
	Left Front Shock Absorber	1								
	<table border="1"> <thead> <tr> <th>Part Number</th> <th>Part Description</th> </tr> </thead> <tbody> <tr> <td>48520-0D330</td> <td>Standard specs</td> </tr> <tr> <td>48520-0D290</td> <td>S grade</td> </tr> <tr> <td>48520-0D340</td> <td>Rough Road specs (Mexico only)</td> </tr> </tbody> </table>	Part Number	Part Description	48520-0D330	Standard specs	48520-0D290	S grade	48520-0D340	Rough Road specs (Mexico only)	
Part Number	Part Description									
48520-0D330	Standard specs									
48520-0D290	S grade									
48520-0D340	Rough Road specs (Mexico only)									

#### B. SST

SST 09729-97202\* Socket Lock Nut



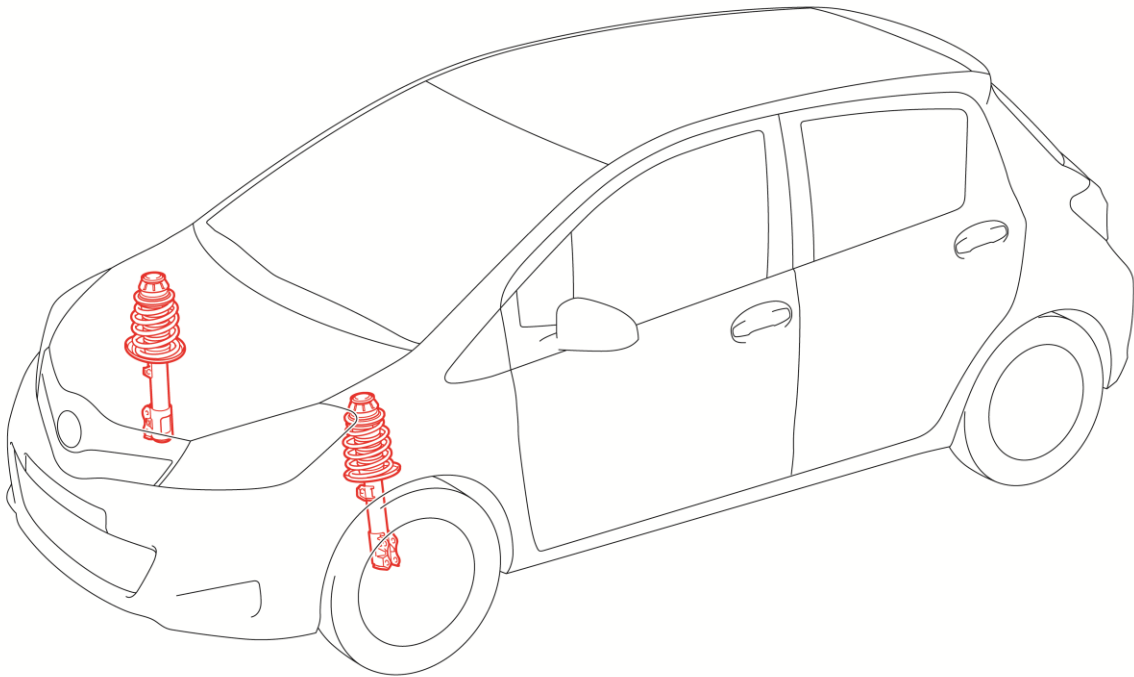
\*This tool was provided to the dealer prior to launch of this campaign.

#### C. TOOLS & EQUIPMENT

- Standard hand tools
- Torque Wrench
- Alignment equipment
- Spring Compressor

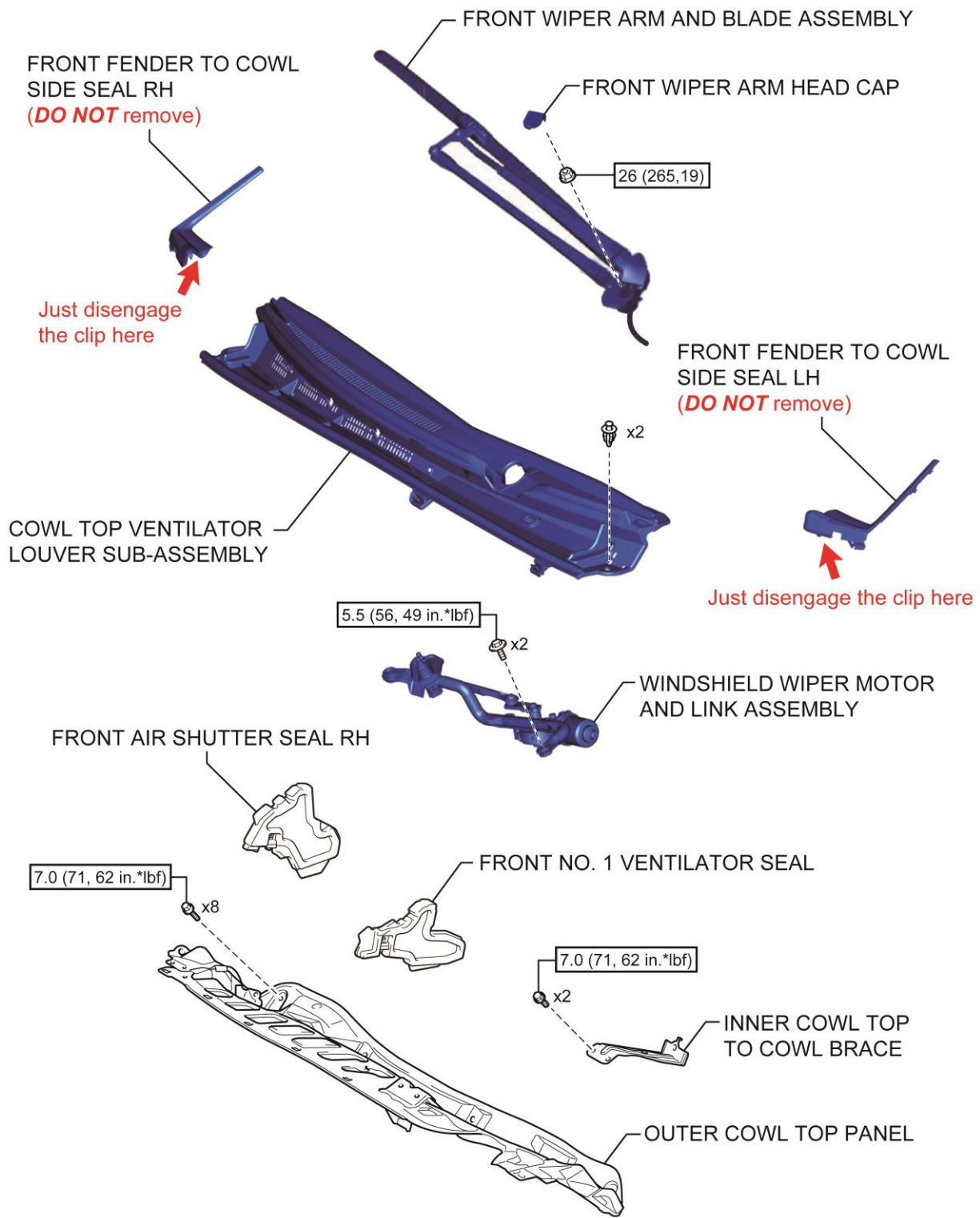
#### IV. BACKGROUND

In the subject vehicles, there is a possibility that a front upper shock assembly bearing could become damaged. If this occurs, the driver may experience abnormal noises while driving on rough road surfaces or when turning the steering wheel. If the vehicle continues to be operated in this condition, a front shock absorber piston rod could separate, causing a loss of vehicle stability and increasing the risk of a crash.



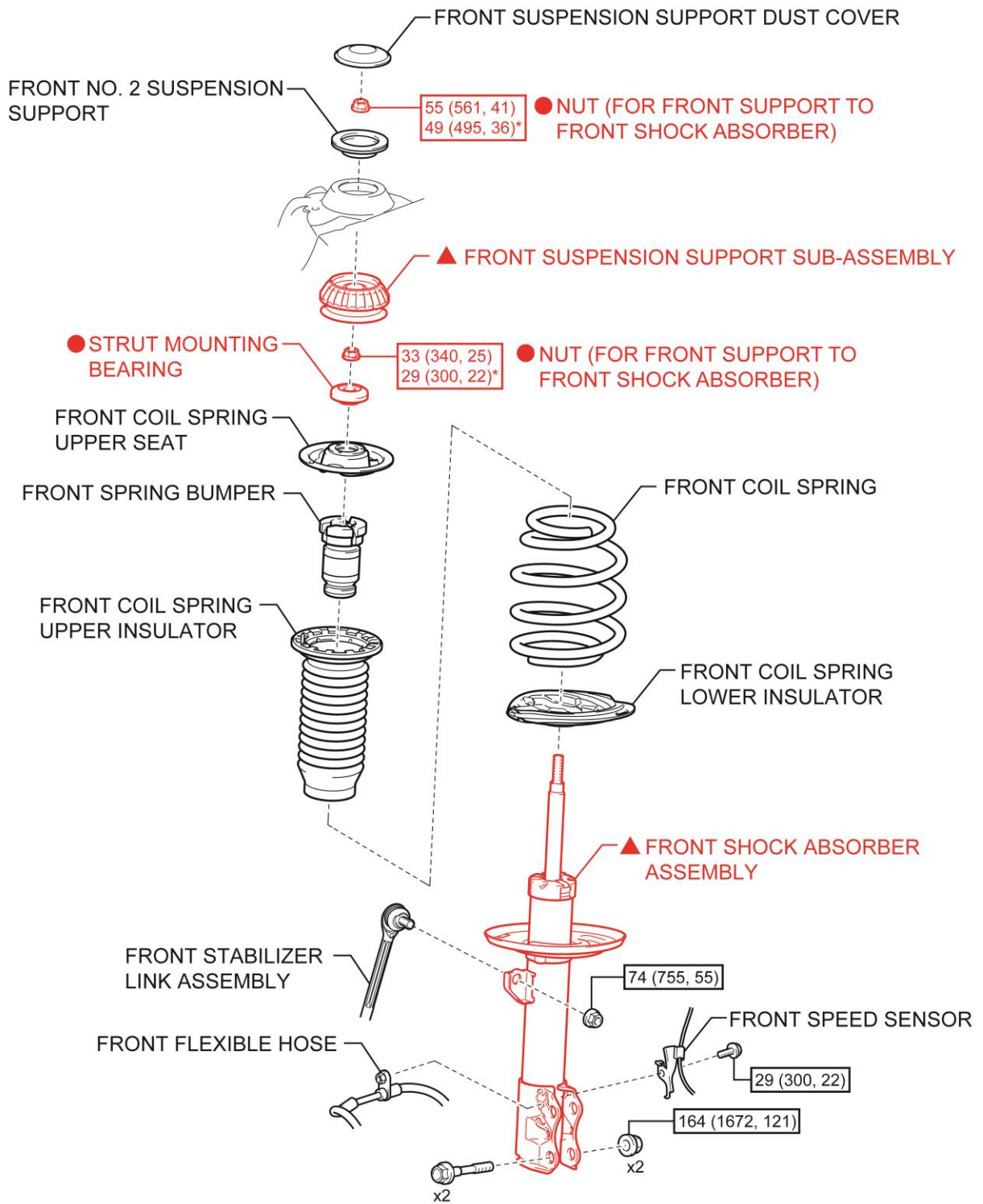
152154010003a

## V. COMPONENTS



**N\*m (kgf\*cm, ft.\*lbf)** : Specified torque

152154010001a



**N\*m (kgf\*cm, ft.\*lbf)** : Specified torque

\* For use with SST

● : Replacement part

**NOTE:**

- ▲: If a strut mounting bearing is damaged, replace with a new one as only damaged side.
- ONLY a small number of front shock absorber (absorbers) is expected to be replaced.

152154010002a

## VI. FRONT SHOCK ABSORBER BEARING INSPECTION

1. REMOVE THE LEFT AND RIGHT FRONT SHOCKS AND REMOVE THE UPPER SPRING SEATS  
Refer to the Technical Information System (TIS), using the applicable vehicle and model year.

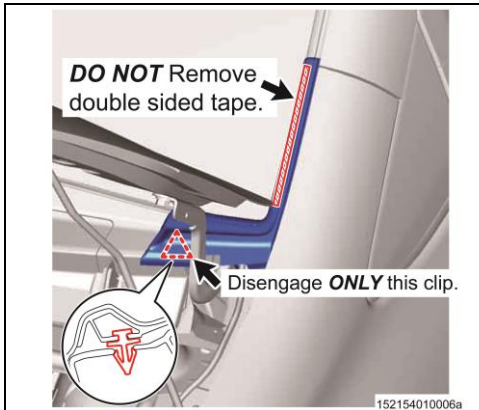
### [Front Shock Absorber Removal](#)



READ THE FOLLOWING WARNINGS PRIOR TO THE STRUT MOUNTING BEARING REMOVAL



These cautions should be observed when performing this campaign. Failure to follow these cautions could result in damage to the vehicle or inadequate repair quality.



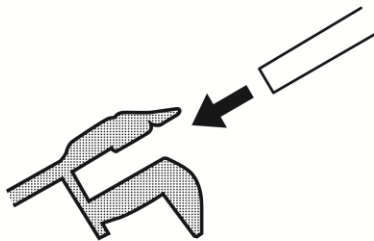
**DO NOT** remove the left and right "Front Fender to Cowl Side Seals".

**ONLY** disengage the clip on the inner side of the vehicle.  
**DO NOT** remove double sided tape.

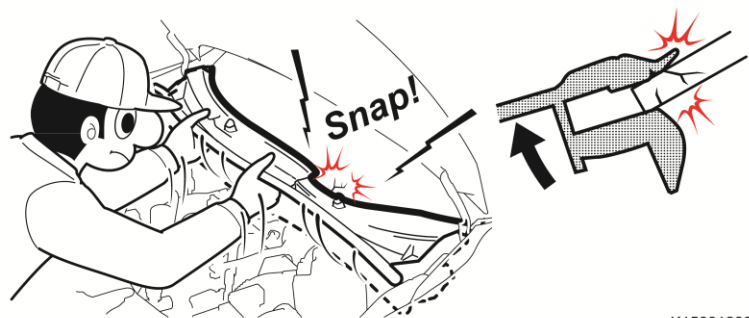
### PRECAUTION WHEN REMOVING THE COWL TOP VENTILATOR LOUVER

Always pull the louver down until it disengages from the windshield before removal. If the louver is pulled upward prior to disengaging it from the windshield, the windshield could crack.

**OK** Straight out



**NG** At an angle



K1500180023a

**NG**



Protective tape

K1500180010

### PRECAUTIONS WHEN HANDLING THE GLASS EDGE

To prevent the glass from breaking, clean it and apply protective tape to the bottom edge so that tools and other items **DO NOT** directly contact the glass.



**DO NOT** put your hand on the bottom edge of the glass to support your weight. The glass could break because there is no support under the lower edge of the glass.



## 2. INSPECT THE STRUT BEARINGS

- a) Inspect the left and right bearing after removing shock and coil spring.

**NOTE: If the Strut Mounting Bearing is broken, upper surface will separate from bearing.**

State of Strut Mounting Bearing	Action Required
<p data-bbox="224 296 451 338"><b>No damage</b></p> 	<p data-bbox="610 426 1520 457"><b>Go to step 4 "REPLACE THE STRUT MOUNTING BEARING".</b></p>
<p data-bbox="240 600 435 642"><b>Damaged</b></p> 	<p data-bbox="610 621 1503 653"><b>Go to step 3 "REPLACE THE FRONT SHOCK ABSORBER".</b></p> <p data-bbox="610 657 979 688"><b>Replace the following parts.</b></p> <ul data-bbox="610 690 1065 821" style="list-style-type: none"><li>- <b>Strut Mounting Bearing</b></li><li>- <b>Shock Absorber Support Nuts</b></li><li>- <b>Front Shock Absorber</b></li><li>- <b>Shock Absorber Support</b></li></ul> <p data-bbox="610 852 1422 915"><b>Note: It is anticipated that very few vehicles will have bearing damage.</b></p>

## 3. REPLACE THE FRONT SHOCK ABSORBER

### [Front Shock Absorber Replacement](#)

#### NOTES:

- The nuts that retain the shock absorber (90179-12145) are non-reusable parts. Replace with new ones when reassembling the vehicle.
- If the strut bearing is damaged, replace the shock on that side of the vehicle only.
- **ONLY** a small number of front shock absorber (absorbers) are expected to be replaced.
- Ensure that the strut bearings are replaced on both sides of the vehicle.

## 4. REPLACE THE STRUT MOUNTING BEARING AND REASSEMBLE THE FRONT SHOCK

### [Front Shock Absorber Removal \(Bearing Removal\)](#)

### [Front Shock Absorber Installation including Bearing](#)

**NOTE: The nuts that retain the shock absorber (90179-12145) are non-reusable parts. Replace with new ones when reassembling the vehicle.**

## 5. INSPECT AND ADJUSTMENT THE FRONT WHEEL ALIGNMENT

### [Alignment Procedure](#)

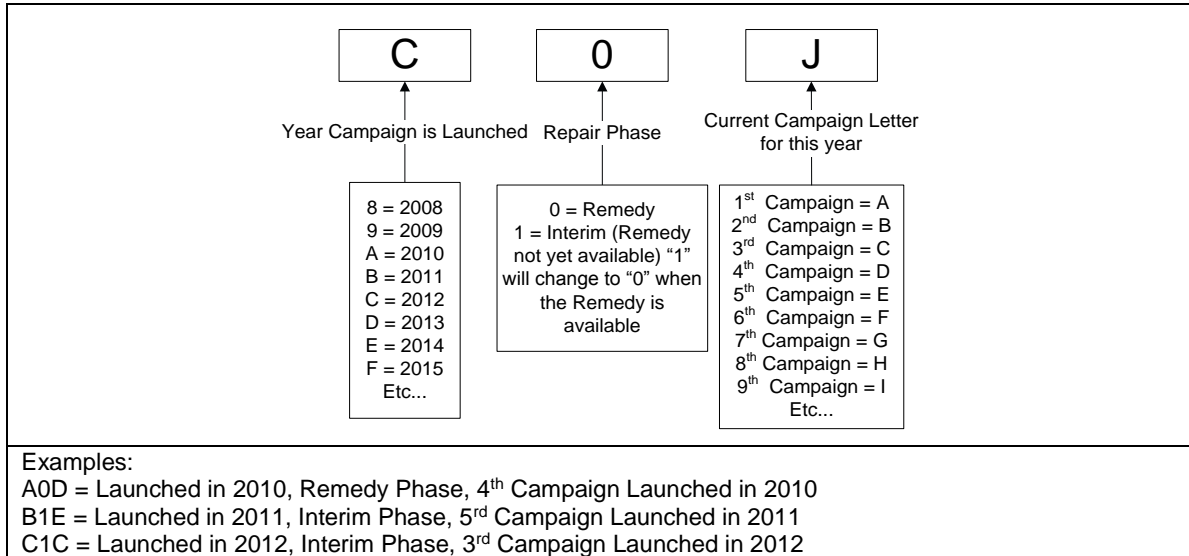
**◀ VERIFY REPAIR QUALITY ▶**

If you have any questions regarding this update, please contact your area representative.



## VII. APPENDIX

### A. CAMPAIGN DESIGNATION DECODER



### B. CAMPAIGN PARTS DISPOSAL

As required by Federal Regulations, please make sure all campaign parts (original parts) removed from the vehicle are disposed of in a manner in which they will not be reused, ***unless requested for parts recovery return.***