

Classification:

RS17-026c

Reference:

ITB17-022c

COPYRIGHT© NISSAN NORTH AMERICA, INC.

Date:

June 3, 2019

VOLUNTARY SAFETY RECALL CAMPAIGN 2003-2005 FX35/45; FRONT PASSENGER AIR BAG INFLATOR

This bulletin has been amended. See AMENDMENT HISTORY on page 22.
Please discard previous versions of this bulletin.

CAMPAIGN ID #: R1622, R1701, R1704, R1706, R1713

NHTSA #: 15V-226, 15V-287, 16V-349, 17V-028

APPLIED VEHICLES: 2003-2005 FX35/45 (S50)

**Check Service COMM or Dealer Business Systems (DBS)
National Service History to confirm campaign eligibility.**

INTRODUCTION

Infiniti is conducting a Voluntary Safety Recall Campaign on certain specific model year 2003-2005 FX35/45 vehicles to replace the front air bag Programmable Smokeless Passenger Inflator (PSPI). This service will be performed at no charge to customer for parts or labor.

Return packaging, shipping labels, documents, and directions must be used and followed in order to properly carry out this campaign. A return instructions sheet is attached and is part of this bulletin.

IDENTIFICATION NUMBER

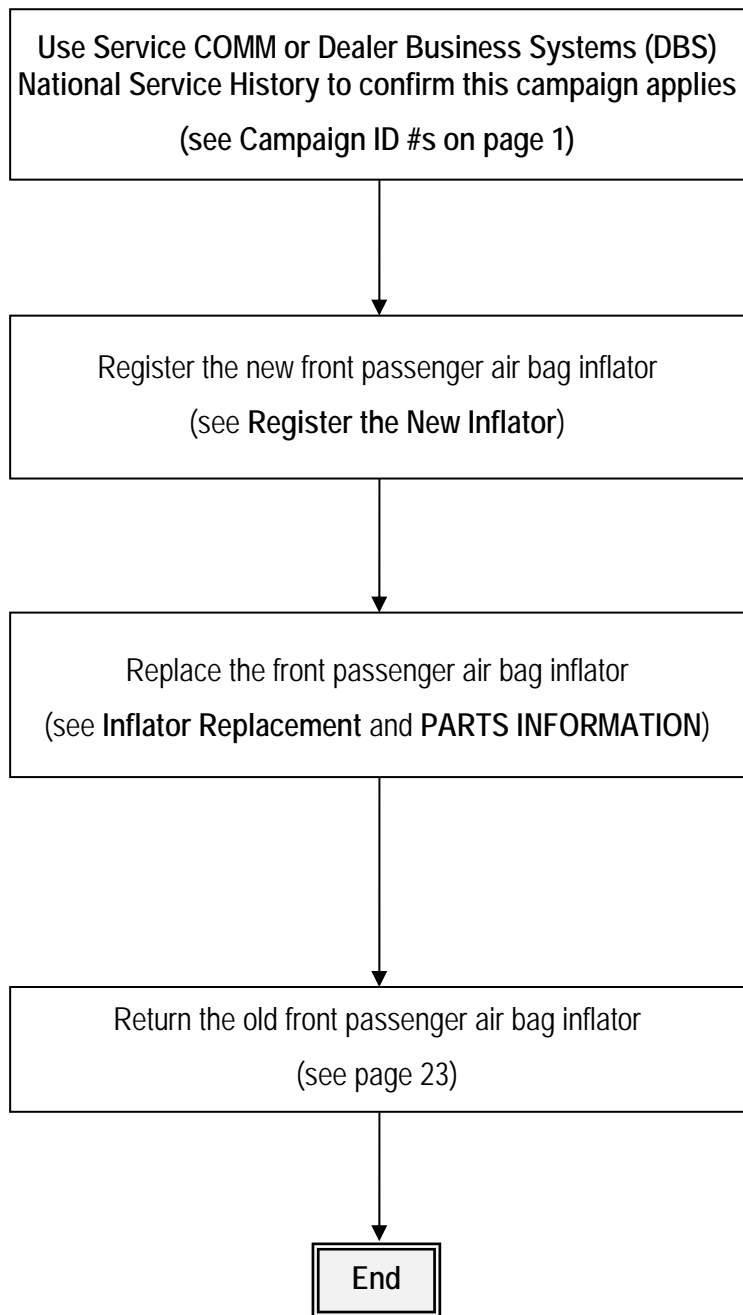
Infiniti has assigned identification numbers R1622, R1701, R1704, R1706, and R1713 to this campaign. Use Service COMM and the VIN to confirm the correct campaign ID number. The correct number must appear on all communication and documentation of any nature dealing with this campaign.

DEALER RESPONSIBILITY

It is the dealer's responsibility to check Service COMM or Dealer Business Systems (DBS) National Service History for the campaign status on each vehicle falling within the range of this voluntary safety recall which for any reason enters the service department. This includes vehicles purchased from private parties or presented by transient (tourist) owners and vehicles in a dealer's inventory. **Federal law requires that new vehicles in dealer inventory which are the subject of a safety recall must be corrected prior to sale. Failure to do so can result in civil penalties by the National Highway Traffic Safety Administration.** While federal law applies only to new vehicles, Infiniti strongly encourages dealers to correct any used vehicles in their inventory before they are retailed.

Infiniti Bulletins are intended for use by qualified technicians, not 'do-it-yourselfers'. Qualified technicians are properly trained individuals who have the equipment, tools, safety instruction, and know-how to do a job properly and safely. NOTE: If you believe that a described condition may apply to a particular vehicle, DO NOT assume that it does. See your Infiniti retailer to determine if this applies to your vehicle.

REPAIR OVERVIEW



REQUIRED SPECIAL TOOLS

Air Bag Module Support (J-51315-KIT)

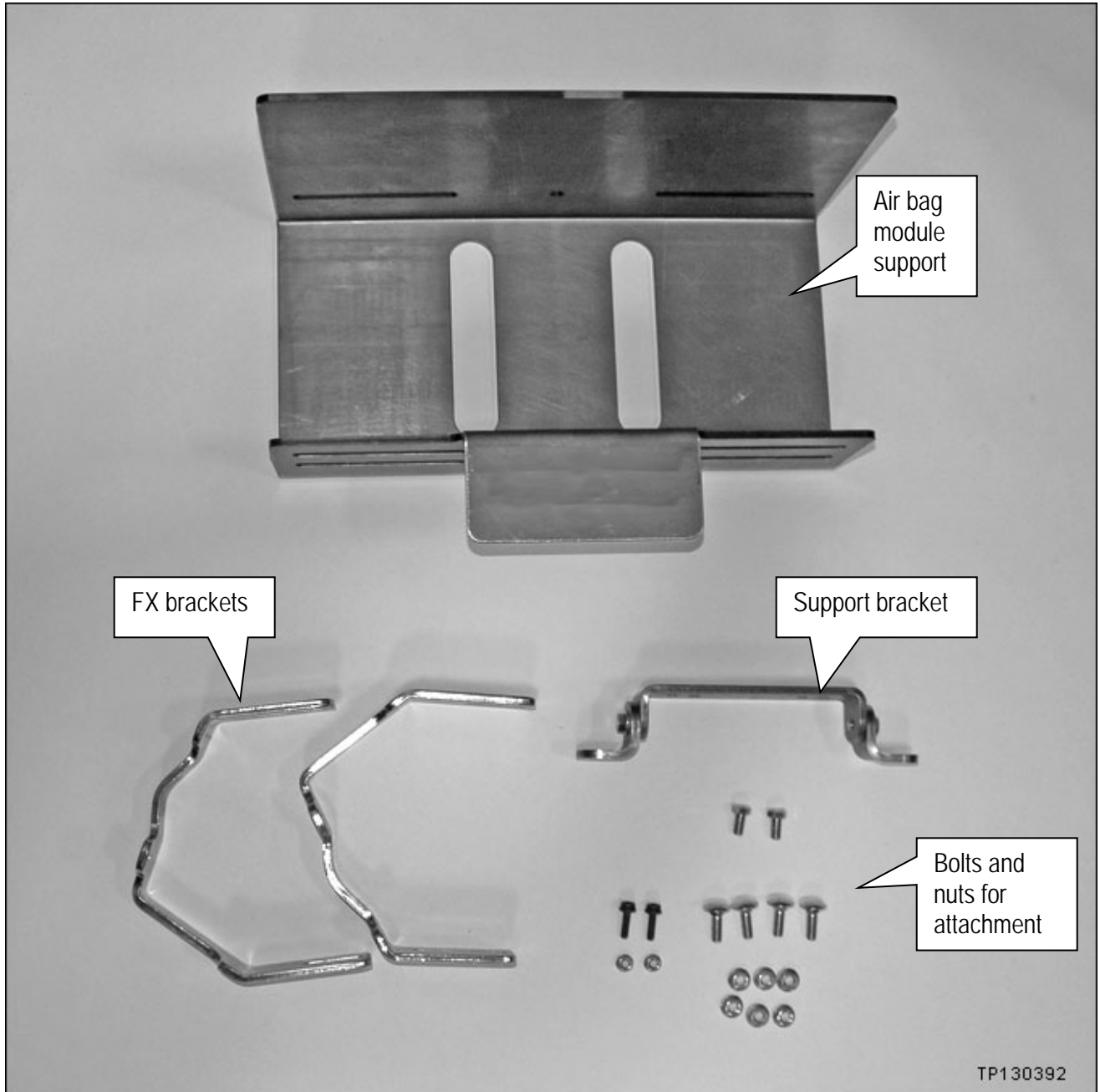


Figure A

REQUIRED SPECIAL TOOLS continued

Quick Scan Tool (J-52352)

- Each retailer has been shipped one Quick Scan Tool (J-52352).
- Additional tools can be obtained from Tech•Mate at 1-800-662-2001.



Figure B

SERVICE PROCEDURE

Register the New Inflator

1. Obtain a new inflator from your parts department.
 - New inflator is listed in the PARTS INFORMATION.

2. Attach the quick scan tool (J-52352) to your CONSULT PC USB port.

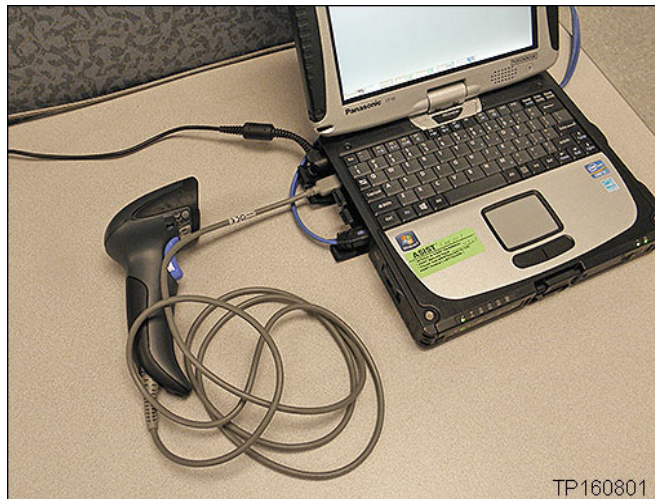


Figure 1

3. On the left side of the ASIST main menu, select Tech Support Info, then Inventory Vehicle Actions.

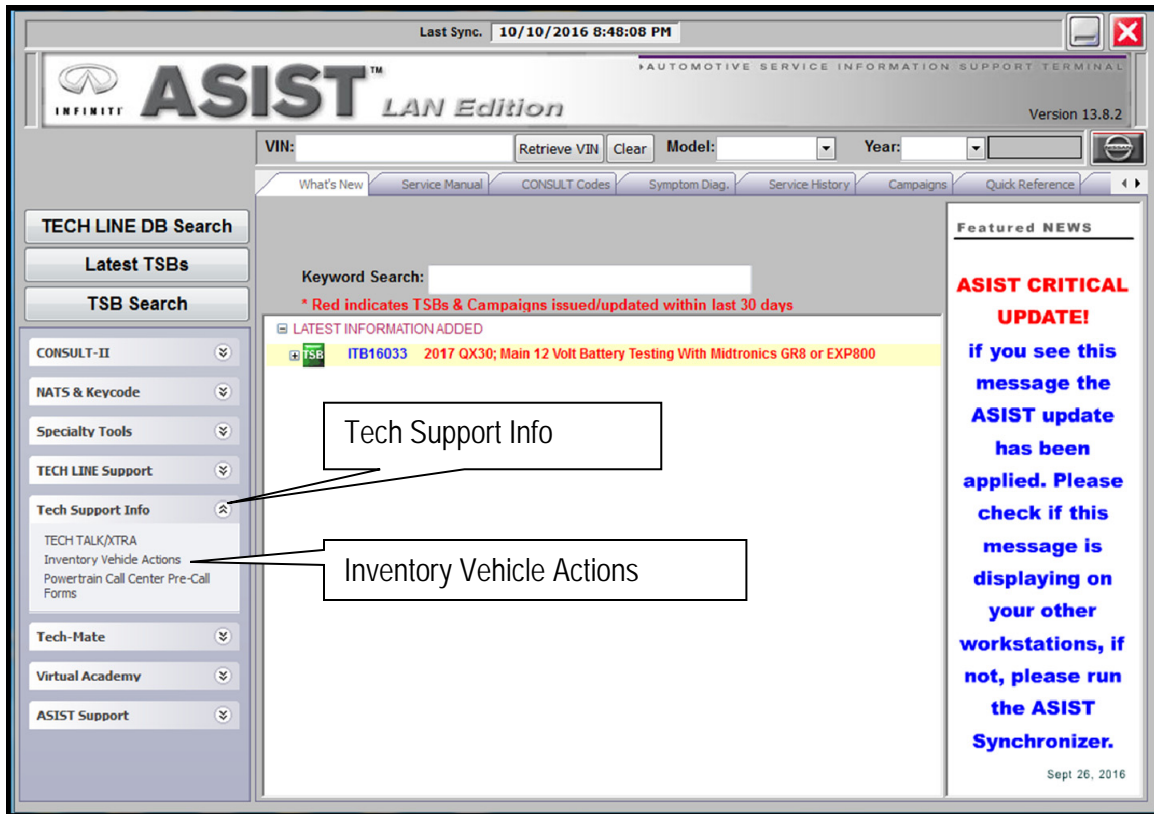


Figure 2

4. Select **CLICK HERE** (Airbag to VIN Registration).

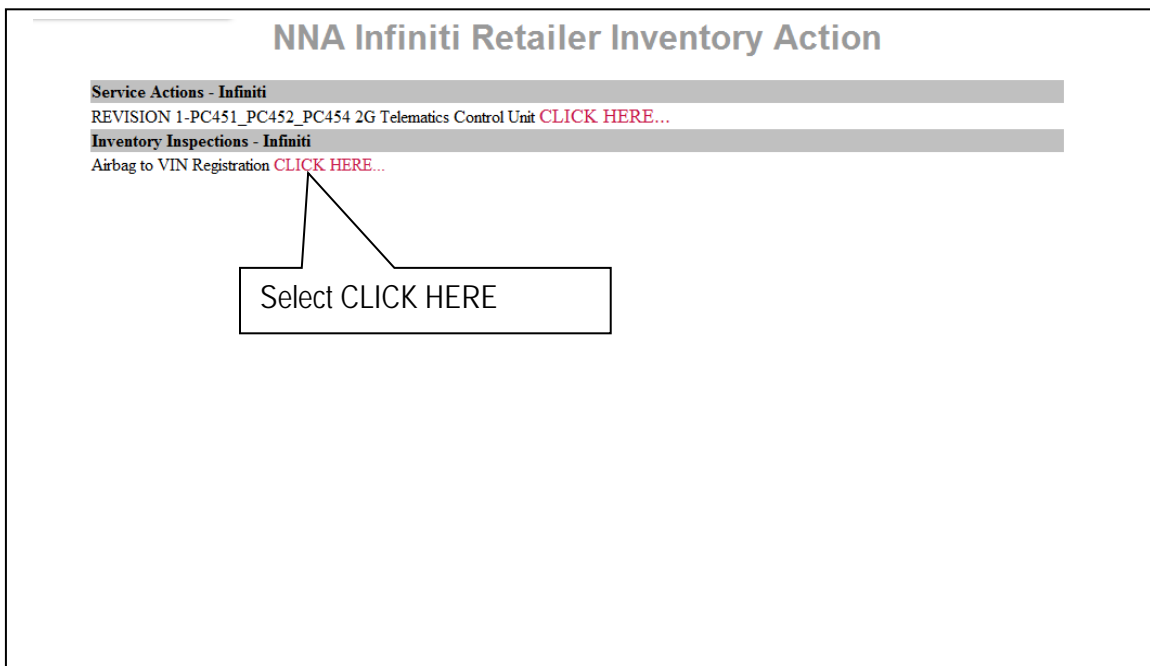


Figure 3

- 5. Use the quick scan tool to scan the bar code (VIN) on the vehicle B-pillar label.

NOTE:

- Some labels may not scan quickly.
- Hold the scan tool approximately 6 inches away from the label.
- Hold the trigger down until the label is read (this may take several seconds).



Figure 4

- VIN will automatically populate (see Figure 5).
- If needed, VIN can be entered manually.

Airbag to VIN Registration

11/28/2016 1:36:32 PM

Please enter/scan the VIN and Airbag Inflator Serial Number

Dealer Code

Key Number

VIN

Airbag Serial Number

Step 7; see next page.
(Select submit after both fields are populated).

Figure 5

6. Use the quick scan tool to scan the bar code (serial number) on the side of the box of the new inflator (see Figures 6 and 7).
 - The serial number will automatically populate (see Figure 5 on the previous page).

NOTE: DO NOT scan the part number label.



Figure 6

NOTE: If needed, the serial number can be entered manually.

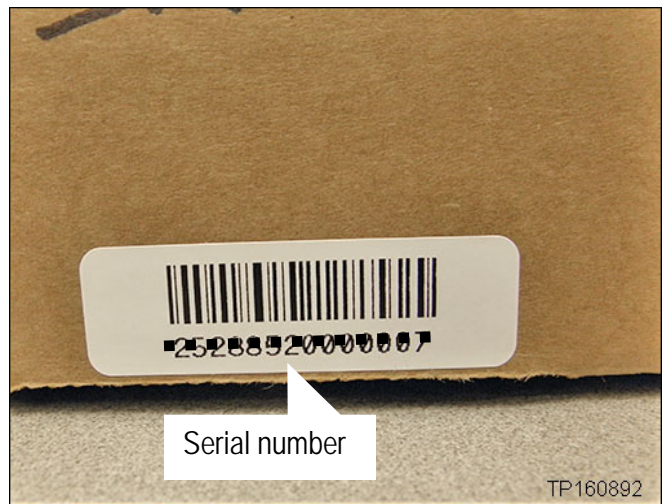


Figure 7

7. Select **Submit** on the ASIST screen (see Figure 5 on the previous page).

Inflator Replacement

IMPORTANT: Follow all cautions, warnings, and notes in the Electronic Service Manual (ESM) when working on or near a Supplemental Restraint System (SRS), such as an air bag.

CAUTION: Handle interior trim carefully to avoid damage. Work with clean hands and clean tools to avoid dirt and stains. Use protective covers as needed.

8. Write down the radio settings.

Presets	1	2	3	4	5	6
AM						
FM 1						
FM 2						
SAT 1						
SAT 2						
Bass	Treble		Balance		Fade	Speed Sen. Vol.

9. Turn the ignition OFF.
10. Disconnect both battery cables, negative cable first.
11. Wait at least 3 minutes.
12. Remove the passenger air bag module (module) from the vehicle.
- Refer to the Electronic Service Manual (ESM), Section **SRS-Supplemental Restraint System**, for module removal.
13. Set the module in a clean working area.

- Securely mount the air bag module support (support) in a vice (see Figure 8).

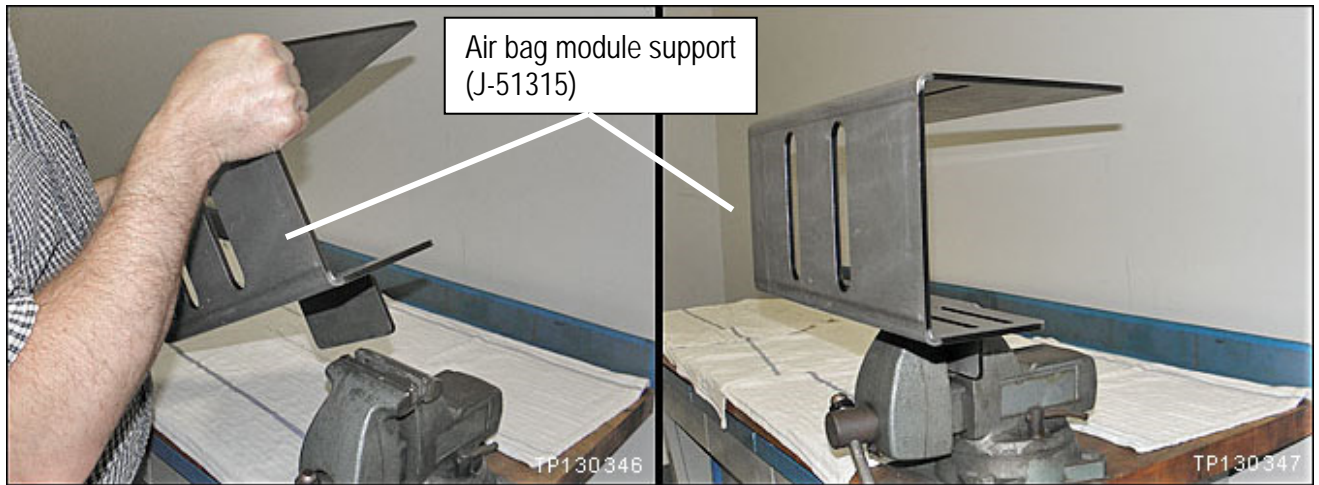


Figure 8

WARNING:

- Work from behind and to the sides of the support.
- Wear safety glasses while performing inflator replacement.

- Disconnect the harness clip from the module frame.

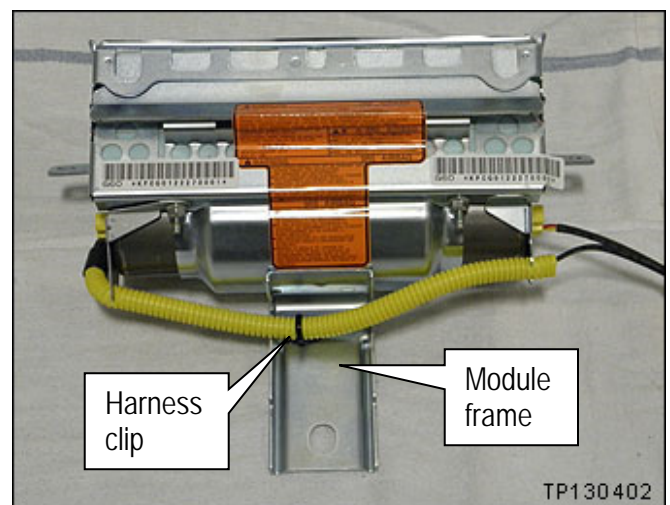


Figure 9

16. Attach the FX brackets to the support as shown.
- Make sure the convex parts of the brackets are in the UP position.
 - Use bolts and nuts supplied with the support.
 - Leave the bolts/nuts slightly loose to allow for positioning of the module.

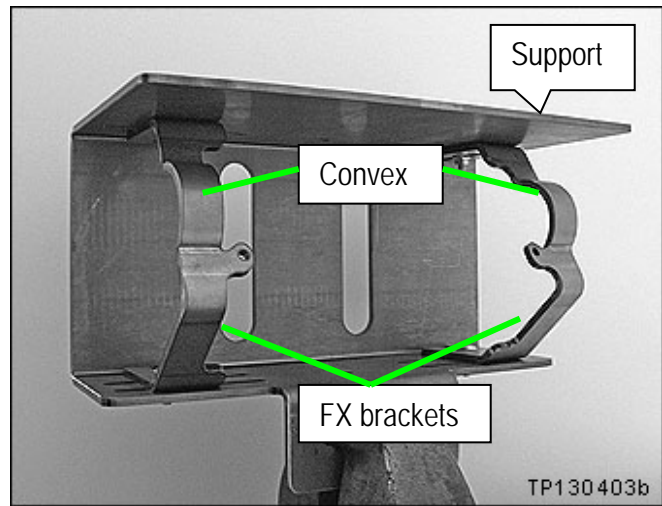


Figure 10

17. Attach the module to the FX brackets in the support as shown.
- Use bolts and nuts supplied with the support.
 - Make sure the arrow on the bag is pointing up.

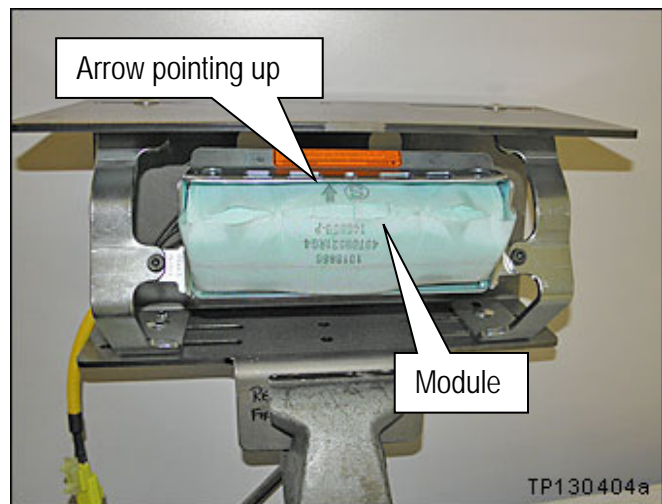


Figure 11

18. Make sure the module is centered in the support.

NOTE: Centering the module in the support will allow access to the inflator securing nuts through the slots in the support.

19. Tighten all of the mounting bolts and nuts that hold the module and brackets to the support.

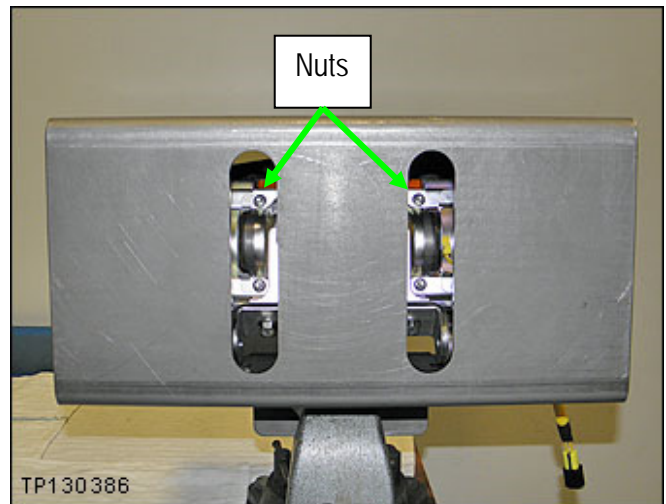


Figure 12

WARNING: Work from behind and to the sides of the support.

20. Carefully cut a few inches of the yellow corrugated harness cover in the area shown.
- **Do not** cut the wires inside the corrugated cover.

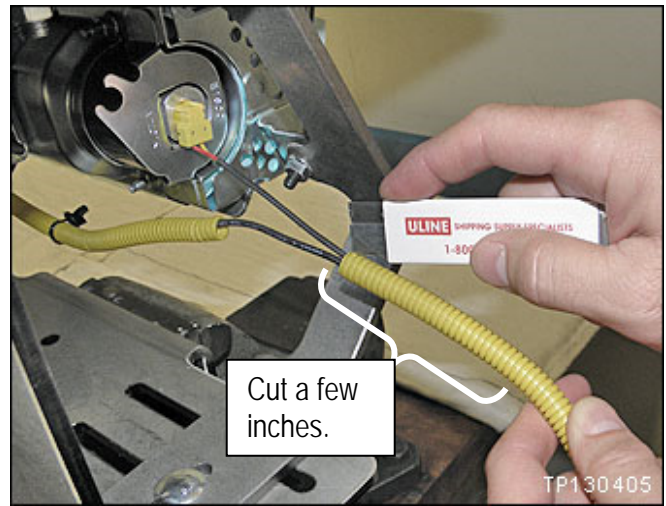


Figure 13

21. Attach two (2) shorting pins to the inflator harness as shown.
- Make sure to pair the wires from each end of the inflator.

Blue with White

Red with Yellow

- Use an insulation displacement type wire connector as a shorting pin.
- Refer to the PARTS INFORMATION for additional connector/shorting pin information.

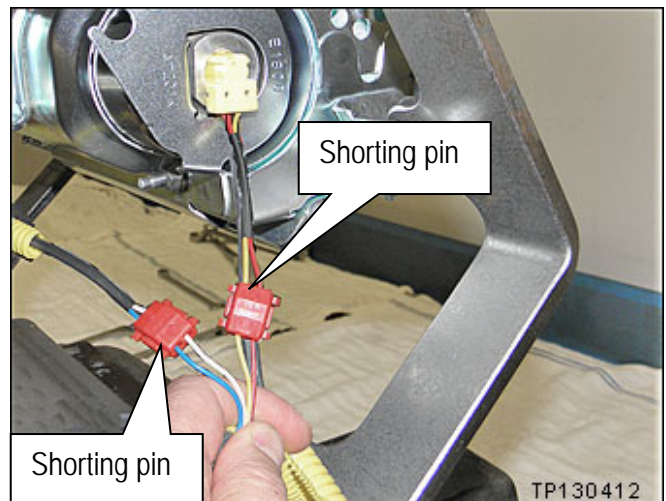


Figure 14

22. Cut off the connector end of the harness.



Figure 15

23. Remove the four (4) nuts from the module that hold the inflator in place (see Figures 16 and 17).

- Use a ratchet and extension.



Figure 16

- Remove all four (4) nuts.

NOTE: These nuts will not be reused.

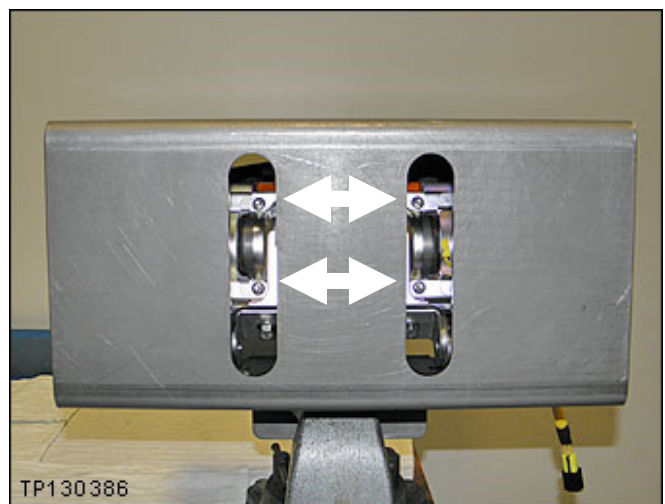


Figure 17

24. Remove the inflator stopper.



Figure 18

25. Push the right side of the inflator out of the module.
- Twist the inflator to a position that will allow the connector and harness to fit through the opening.

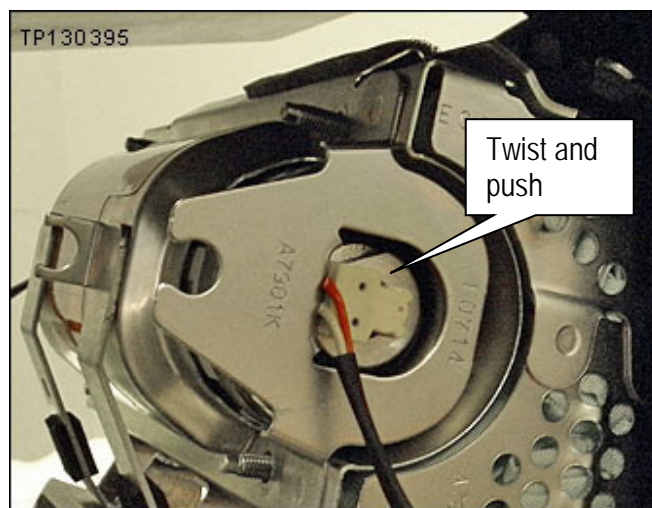


Figure 19

26. Pull the inflator completely out of the module from the left side.



Figure 20

27. Set the old inflator in the clean working area and make sure it does not roll and fall to the floor.

NOTE:

- Follow the Return Instructions on page 23.

28. Remove the **new** inflator from the box.

29. Slide the new inflator into the module from the left side.



Figure 21

30. Make sure the inflator is positioned / oriented correctly as shown.

- **The flat side of the inflator end (on the right side) must align with the flat side of the inflator housing.**

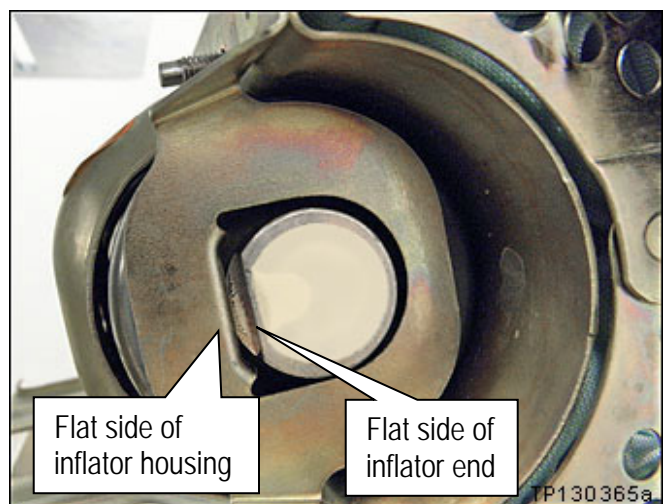


Figure 22

31. Install the inflator stopper and four (4) inflator securing nuts finger tight (see Figure 23).
 - Make sure to **use new nuts**.
 - New nuts are included with the harness kit.
32. Make sure the inflator is pushed all the way into its housing – no gap on the right side (see Figure 23).
33. Make sure there is no gap between the inflator stopper and the inflator on the left side (see Figure 23).

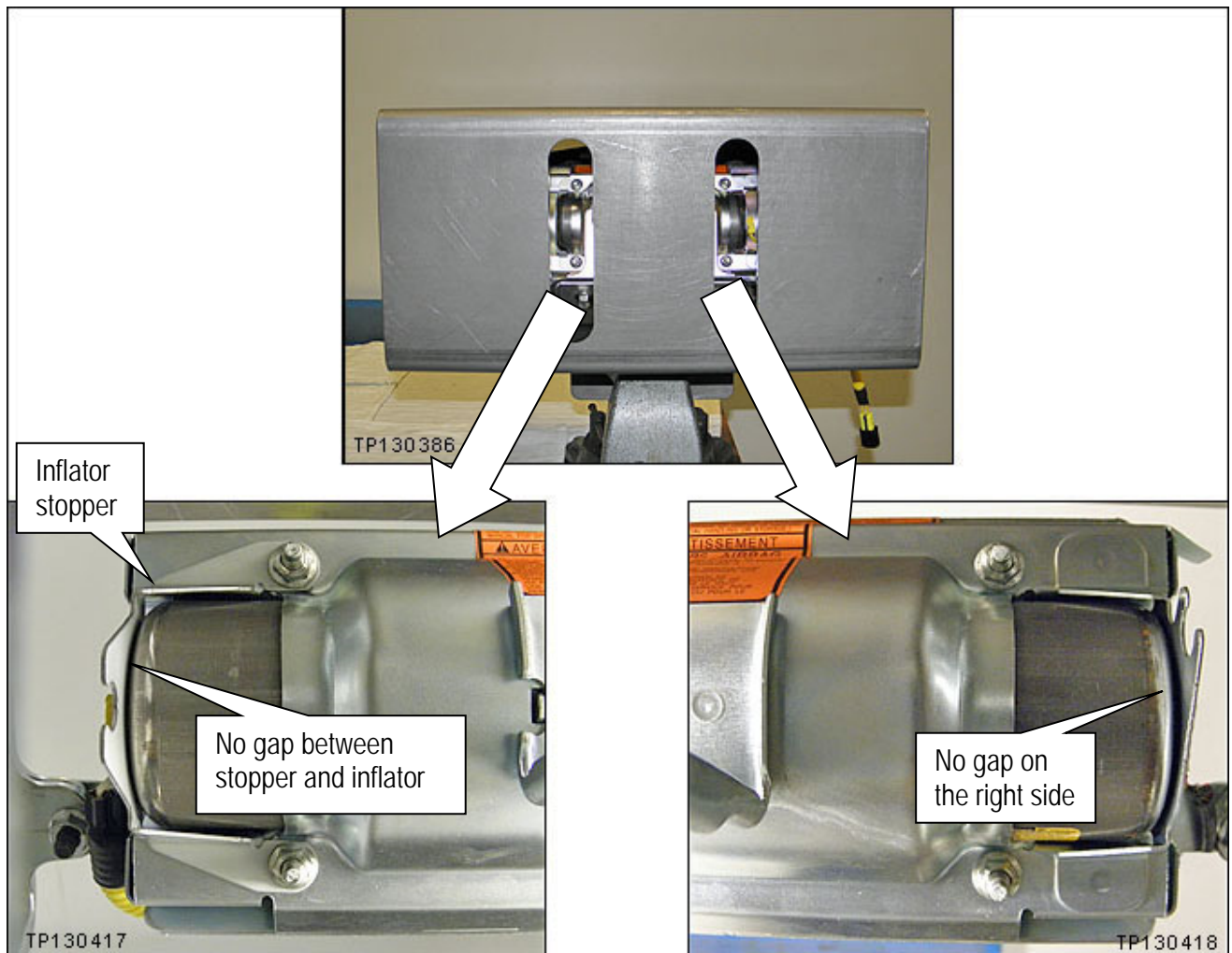


Figure 23

34. Torque the four (4) inflator securing nuts.
- Torque nuts to:
3.9 N•m (0.39 kg-m, 34 in-lb.).
 - Torque in the order shown.

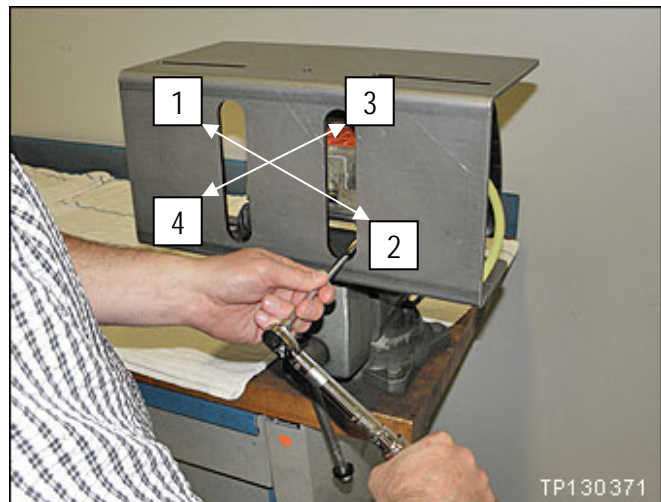


Figure 24

IMPORTANT:

- In the next step you will be attaching the new harness to the new inflator.
- Once an inflator connector is attached to the inflator, it cannot be disconnected.
- Make sure to attach the connectors to the correct ends of the inflator (see Figure 25).
 - Left / Right orientation is as shown in Figure 25.

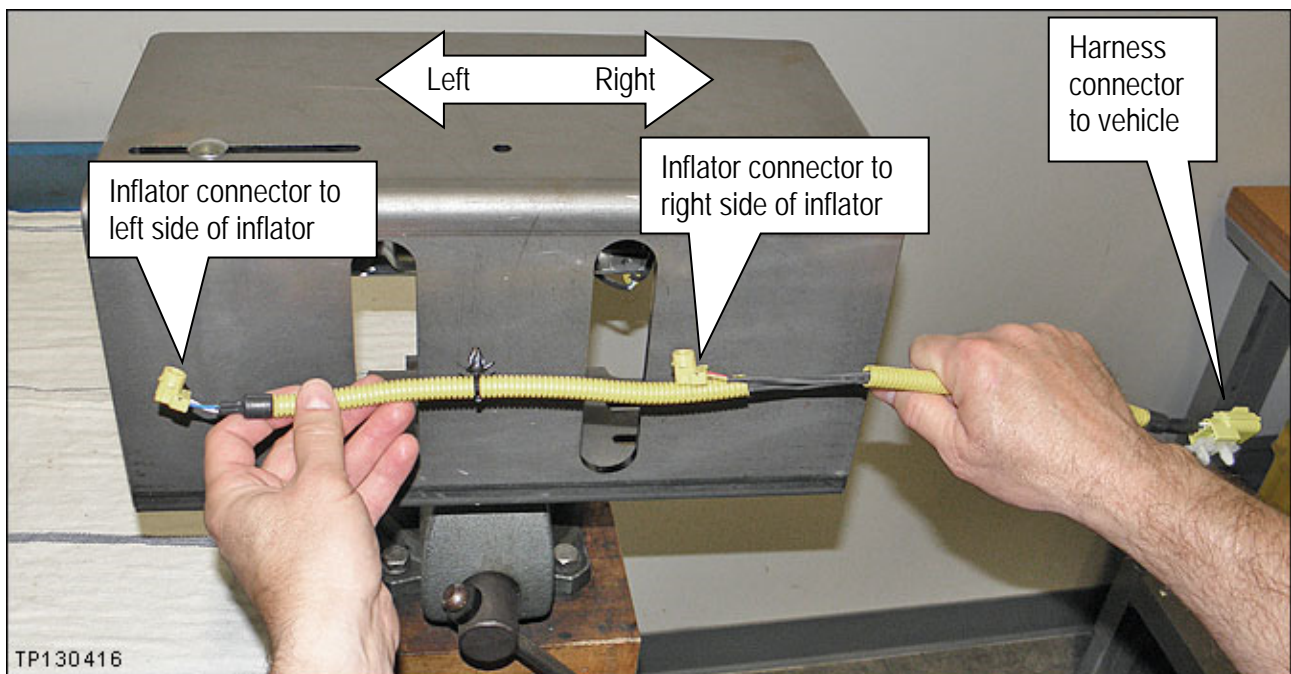


Figure 25

35. Attach the new harness to each end of the inflator.
- Remove the dust proof stickers covering the ends of the inflator.
 - The new harness is listed in the PARTS INFORMATION.
 - Make sure to attach the correct ends (see Figure 25 on the previous page).
 - Refer to Figures 25, 26, 27, and 28.

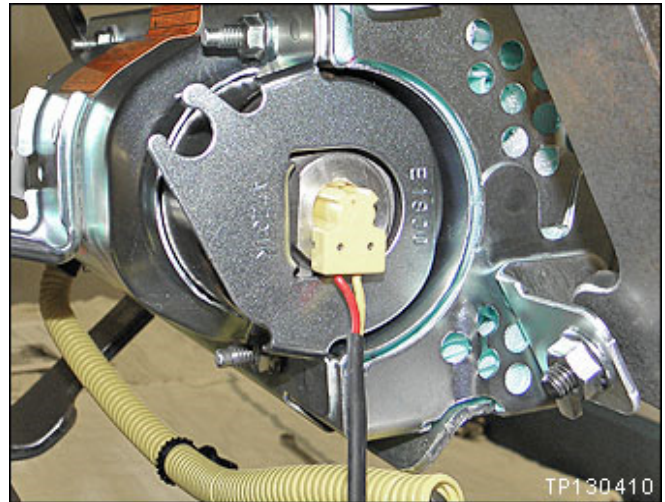


Figure 26

- Make sure the T shape at the inflator end aligns with the T shape of the connector.

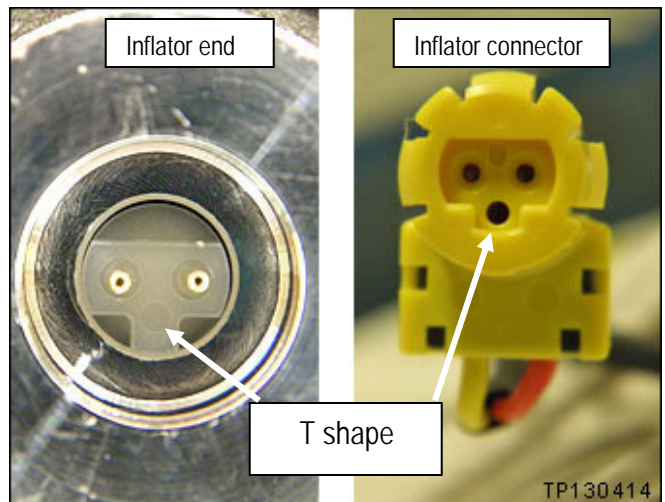


Figure 27

- Make sure harness connector is fully engaged / seated (see Figure 28).

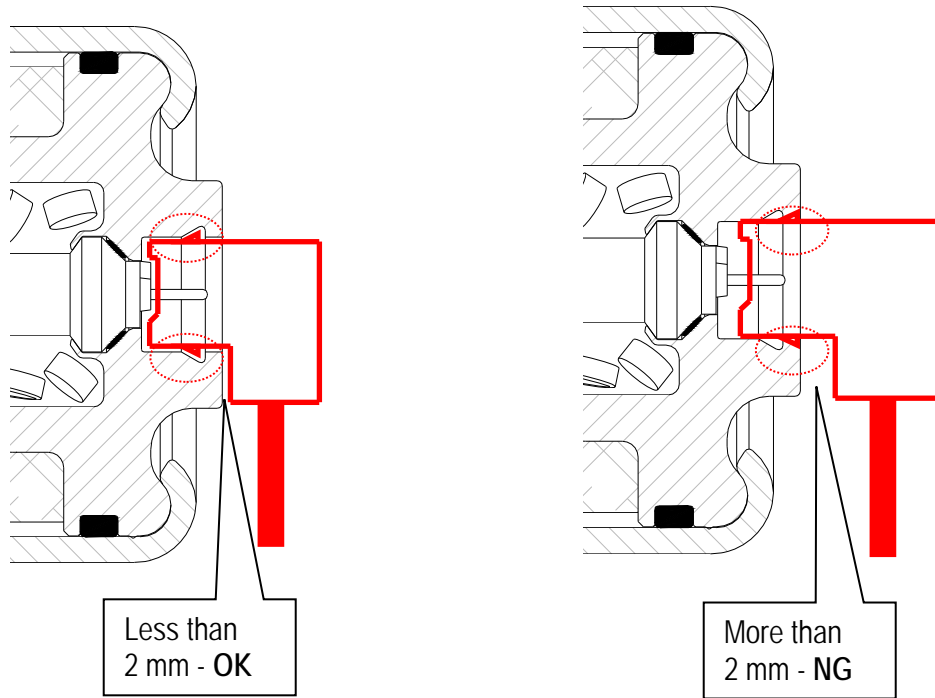


Figure 28

36. Remove the module from the support and set it on the clean working area.

37. Attach the harness clip to the module frame.

38. Clip the harness into the harness guides.

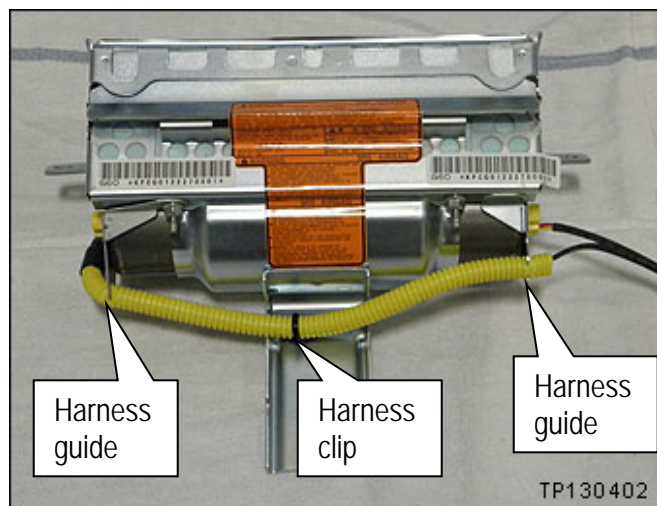


Figure 29

39. Reinstall the module into the vehicle in reverse order of removal.
 - Make sure to use the new "one time use" module mounting bolt included with the harness kit.
NOTE: For FX (per a Service Manual amendment – ITB13-023) only one air bag mounting bolt is "one time use".

40. Re-connect both battery cables – positive cable first.


41. Reset the clock and the radio settings.

42. Turn the ignition ON and observe the air bag warning light:
 - Light should illuminate for seven (7) seconds and then go out.

NOTE: If the Air Bag Warning light does not operate as described above there may be an issue not covered by this campaign. Refer to ASIST and the appropriate ESM for additional diagnostic and repair information.

43. Return the removed (old / non-deployed) inflator in the box that the new inflator arrived in.
 - Follow the Return Instructions on page 23.

PARTS INFORMATION

MODEL and YEAR	DESCRIPTION	PART NUMBER	QUANTITY
2003-2005 FX35/45	INFLATOR-AIR BAG ASST	K85FA-7999B	1
2003-2005 FX35/45	HARNESS KIT (Includes harness, module mounting bolts, and inflator securing nuts)	B4AFG-CG00A	1
	<p>Shorting Pin (Insulation Displacement Connector for 22-18 gauge wire)</p> 	<p>NAPA item # 784566</p> <p>Grainger Item # 4YT50</p> <p>or equivalent available from local auto supply</p>	2

NOTE:

- Make sure to return the removed (old / non-deployed) inflator in the box that the new inflator came in.
- Follow the Return Instructions on page 23.

CLAIMS INFORMATION

NOTE: Use Service COMM and the VIN to confirm the correct campaign ID number for a given vehicle. The correct number must appear on all communication and documentation of any nature dealing with this campaign.

Submit a "CM" line claim using the following claims coding:

CAMPAIGN ("CM") I.D.	DESCRIPTION	OP CODE	FRT
R1622	FX - Remove and replace front passenger air bag inflator	R1622K	1.1 hrs.

OR

CAMPAIGN ("CM") I.D.	DESCRIPTION	OP CODE	FRT
R1701	FX - Remove and replace front passenger air bag inflator	R1701A	1.1 hrs.

OR

CAMPAIGN ("CM") I.D.	DESCRIPTION	OP CODE	FRT
R1704	FX - Remove and replace front passenger air bag inflator	R1704H	1.1 hrs.

OR

CAMPAIGN ("CM") I.D.	DESCRIPTION	OP CODE	FRT
R1706	FX - Remove and replace front passenger air bag inflator	R1706C	1.1 hrs.

OR

CAMPAIGN ("CM") I.D.	DESCRIPTION	OP CODE	FRT
R1713	FX - Remove and replace front passenger air bag inflator	R17137	1.1 hrs.

EXPENSE CODE	DESCRIPTION	MAXIMUM AMOUNT
041	Shorting Pin (Insulation Displacement Connector for 22-18 gauge wire)	\$1.00

AMENDMENT HISTORY

PUBLISHED DATE	REFERENCE	DESCRIPTION
March 14, 2017	ITB17-022	Original bulletin published.
June 14, 2017	ITB17-022a	Amended to consolidate models.
March 14, 2019	ITB17-022b	Changes made throughout.
June 3, 2019	ITB17-022c	PARTS INFORMATION and CLAIMS INFORMATION sections revised, and air bag module replacement information removed.



RETURN INSTRUCTIONS

NOTE

NOTE: **International (including Mexico and Canada), Hawaii, Alaska, Puerto Rico, and US Virgin Islands dealers CANNOT** follow below shipping instructions. Instead, dealerships in these locations **MUST** contact the following Takata/Menlo USA representative directly for shipping instructions: Miguel Prigadaa – Tel #: 210-250-5078 or 210-250-5061 Email: [SCTakataRestraints_International@xpo.com](mailto: SCTakataRestraints_International@xpo.com)

NOTE: For Continental US 48 State dealerships, please follow steps 1-8 below.

- Specific to Step 4 below:
 - Follow step 4a if you receive the updated NON-FedEx label. Proceed to step 5.
 - Follow step 4b if you receive the FedEx label. Proceed to step 5.

1. Shipping Documents

a) Box Label

- Supplied with each Kit
- To be affixed to each box



b) Over-pack Label

- To be supplied by XPO.
- To be affixed to the outside of each pallet



c) Bill of Lading

- To be supplied by XPO.
- Print 2 copies: 1 for Dealer Records, 1 for LTL Driver



d) ERG Document

- To be supplied by XPO.
- To be provided by the Dealer to the LTL Driver for each shipment



5. Shipping Instructions – Prepare the Pallet

- Accumulate and palletize Kits
- Arrange Kits on Pallet as pictured here
 - 20 boxes per row/layer (5x4)
 - 10 rows/layers per pallet (200 boxes)
- Shrink-wrap Kits to Pallet
- Affix Over-pack Label on (1) side of Pallet (Not on Top)



6. Shipping Instructions – Schedule LTL Pickup

- Upon Accumulating 200 kits (1 Over-pack/Pallet) Minimum
 - Call XPO at 1-210-250-5079
 - If 200 Kits have not been accumulated in 30 days, please call XPO for direction
- Have the following Information Available
 - Dealer #
 - Quantity of Over-packs/Pallets
 - Quantity of Passenger Inflator Kits on each Pallet
 - Email Address where shipping Documentation can be received

2. Packing Instructions

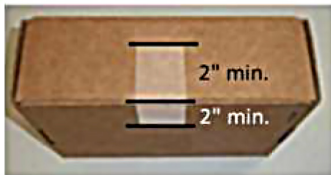
a) Confirm box is in acceptable condition. If a new box is needed, follow the New Box instructions located In Box 8 of this page.

b) Place the un-deployed air bag inflator in the "cradle" of the box insert.



3. Closure Instructions

a) Close the top box flap, per box closure instructions located on front panel of box.



7. Shipping Instructions – Ship

- Give 1 Copy of BOL and 1 Copy of ERG to Driver
- Retain 1 Copy of BOL for Dealership records and archive for 2 Years

8. Requesting a New Box / Shipping Labels

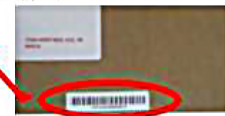
If a new box or replacement shipping labels are needed, please contact the representative listed below by phone or email to request replacement materials.

Primary Contact: Armando Gonzalez - Tel #: 210-250-5079

E-Mail: [SCfieldaction.14305@xpo.com](mailto: SCfieldaction.14305@xpo.com)

To help expedite your request, please be prepared to provide the following information:

- Serial number on the original box
- What Type of shipping material needed
 - Replacement Box
 - Two Part Return Label
 - Bill of Lading
 - ERG Form
- Dealer Shipping Information
 - Contact name
 - Dealer Address
 - Phone Number



4a. Shipping Instructions - Label each Box

a) New Labels will begin shipping in each kit starting mid June, 2015

