



RECALL CAMPAIGN BULLETIN

Reference:

NTB16-053a

Date:

May 24, 2016

VOLUNTARY SAFETY RECALL CAMPAIGN 2013-2016 SENTRA OCCUPANT CLASSIFICATION SYSTEM REPROGRAMMING SEATBELT BUCKLE BRACKET INSTALLATION

This bulletin has been amended to correct Step 7 and Figure 15 on Page 9 and to correct Step 6 and Figure 25 on Page 14. Discard all previous copies of this bulletin.

CAMPAIGN ID #: R1608

NHTSA #: 16V-242

APPLIED VEHICLE: 2013-2016 Sentra (B17)

Check Service COMM to confirm campaign eligibility.

INTRODUCTION

Nissan is conducting a Voluntary Safety Recall Campaign on certain specific Nissan Vehicles, listed in APPLIED VEHICLES above, to install a seatbelt buckle bracket and reprogram the Airbag Diagnostic Sensor Unit and Occupant Classification System (OCS) control unit. This service will be performed at no cost to the customer for parts or labor.

IDENTIFICATION NUMBER

Nissan has assigned identification number R1608 to this campaign. This number must appear on all communications and documentation of any nature dealing with this campaign.

DEALER RESPONSIBILITY

It is the dealer's responsibility to check Service Comm for the campaign status on each vehicle falling within the range of this voluntary recall which for any reason enters the service department. This includes vehicles purchased from private parties or presented by transient (tourist) owners and vehicles in a dealer's inventory. **Federal law requires that new vehicles in dealer inventory which are the subject of a safety recall must be corrected prior to sale. Failure to do so can result in civil penalties by the National Highway Traffic Safety Administration.** While federal law applies only to new vehicles, Nissan strongly encourages dealers to correct any used vehicles in their inventory before they are retailed.

Nissan Bulletins are intended for use by qualified technicians, not 'do-it-yourselfers'. Qualified technicians are properly trained individuals who have the equipment, tools, safety instruction, and know-how to do a job properly and safely. **NOTE:** If you believe that a described condition may apply to a particular vehicle, DO NOT assume that it does. See your Nissan dealer to determine if this applies to your vehicle.

CAMPAIGN INFORMATION

Front Passenger Air Bag Status Light

Performing the procedures in the bulletin (campaign R1608) changes the operation of the passenger air bag status light.

- After performing this campaign, the passenger air bag status light will be ON (illuminated) when the front passenger seat is empty.

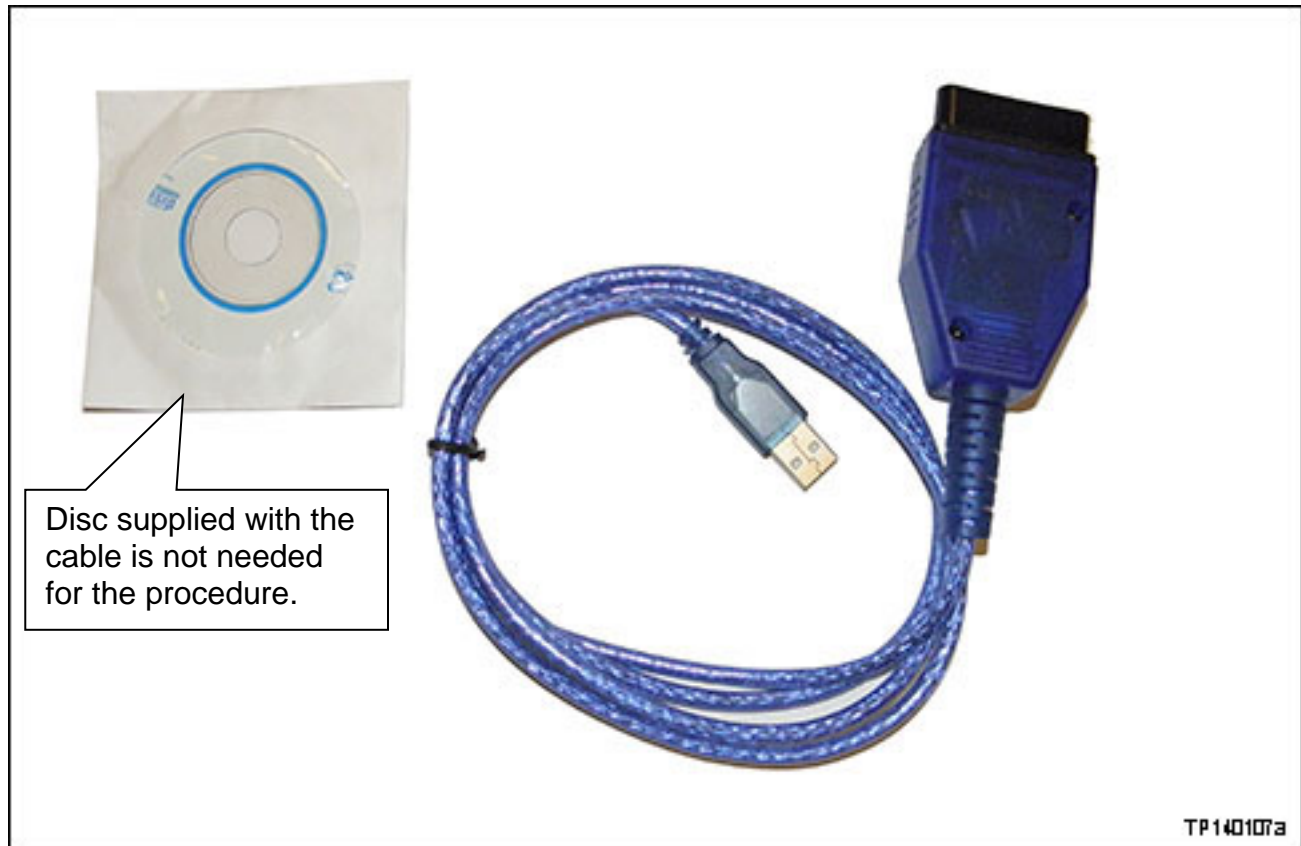


Air Bag Warning Light

This campaign does not change the operation of the air bag warning light

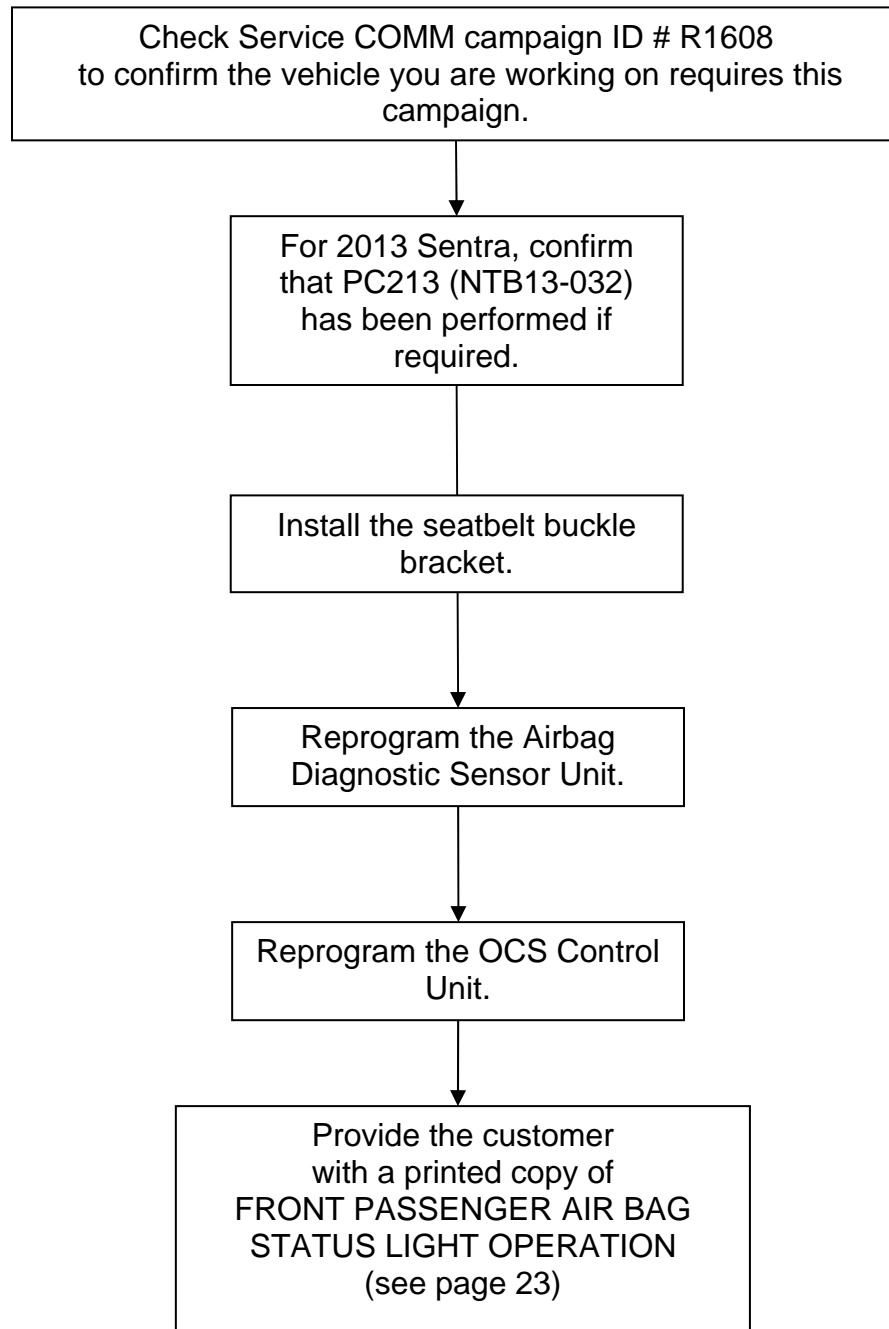


REQUIRED SPECIAL TOOL J-51594 (OCS Reprogramming Cable)



- One J-51594 OCS reprogramming cable has been supplied to each dealer. Additional cables can be obtained from Tech-Mate at 1-800-662-2001.

REPAIR OVERVIEW



SERVICE PROCEDURE

Seatbelt Buckle Bracket Installation

1. Tilt both the driver's and passenger seats all the way forward, and then move both seats as far forward as possible.



Figure 1

2. Unbolt the passenger seat from the floorboard.
 - Remove the rear bolts first and then the front.
 - Four T50 Torx bolts; two front and two rear.
 - Rear bolts shown in Figure 2. Front bolts not shown.

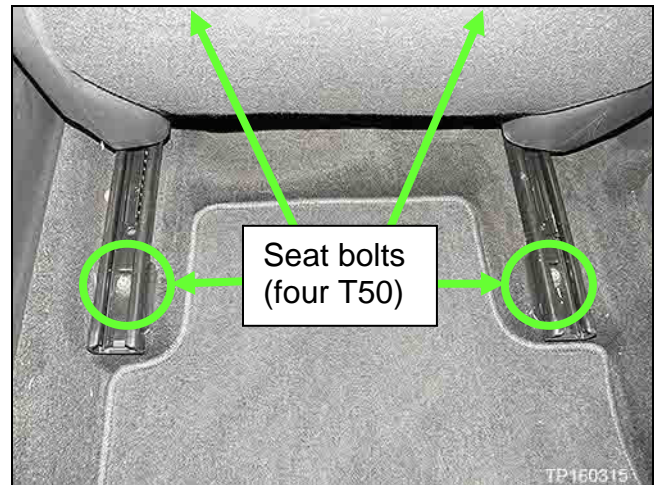


Figure 2

3. Tilt the passenger seat rearward so that the harnesses underneath can be accessed.
4. Unclip the harness from the seat bottom at the two locations shown in Figure 3.

IMPORTANT: Do not disconnect any of the harness connectors under the seat.

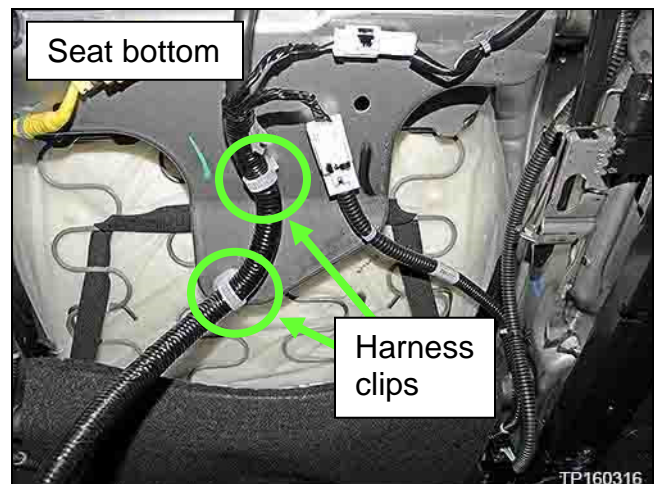


Figure 3

5. Return the seat to an upright position (seat rails flat on floor).
6. Gently slide the seat all the way to the rear so that the seatbelt buckle bolt can be reached.
7. Remove the seatbelt buckle bolt.

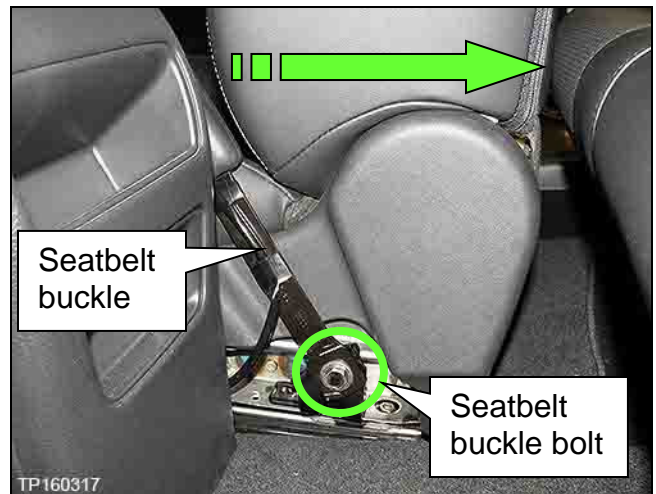


Figure 4

8. Remove the seat cushion outer finisher (LH) with an appropriate tool.



Figure 5

9. Remove the seatback bolt shown in Figure 6.

NOTE: This bolt will not be reused.

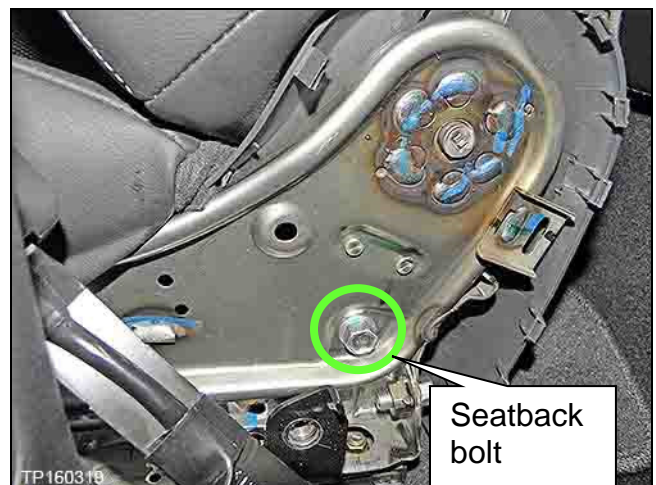


Figure 6

10. Remove the seatbelt buckle bolt retaining clip and bolt spacer from the seatbelt buckle.

- Discard the bolt retaining clip and bolt spacer.

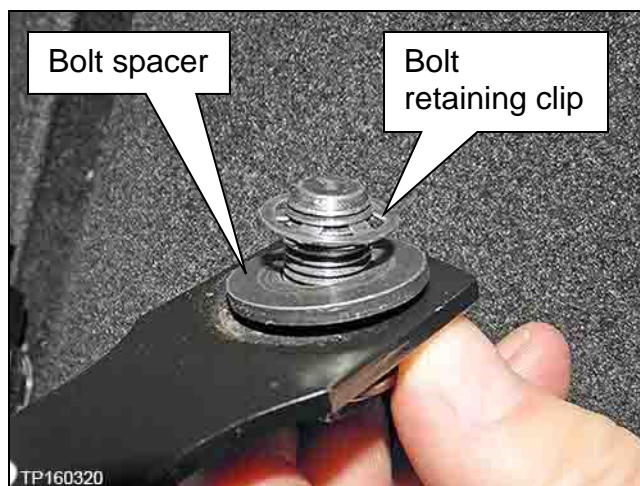


Figure 7

11. Install the seatbelt buckle bracket onto the backside of the seatbelt buckle as shown in Figure 8.

- Confirm that wave washer is between seatbelt buckle and bolt where shown in Figure 8.
- Position bracket notch as shown in Figure 9.



Figure 8

12. Attach the seatbelt buckle to the seat, but do not tighten.

IMPORTANT: Start the seat belt buckle bolt by hand.

13. Place the spacer between the seatbelt bracket and the seatback and then install the new seatback bolt.

IMPORTANT: Start the seatback bolt by hand.

14. Torque the seatback bolt; seat belt buckle bolt will be tightened later in the procedure.

- Seat back bolt torque: 46.5 N•m (4.74 Kg-m, 34 ft-lb.)

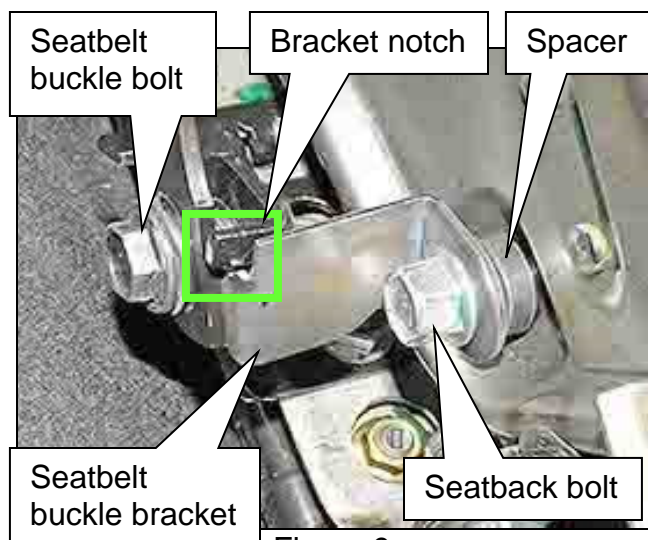


Figure 9

15. Slide the seat cushion outer finisher (LH) past the loose seatbelt buckle and then snap it into place.

NOTE: Align and attach the forward metal clip of the seat cushion outer finisher (LH) first (Figure 11), and then the remaining plastic clips.

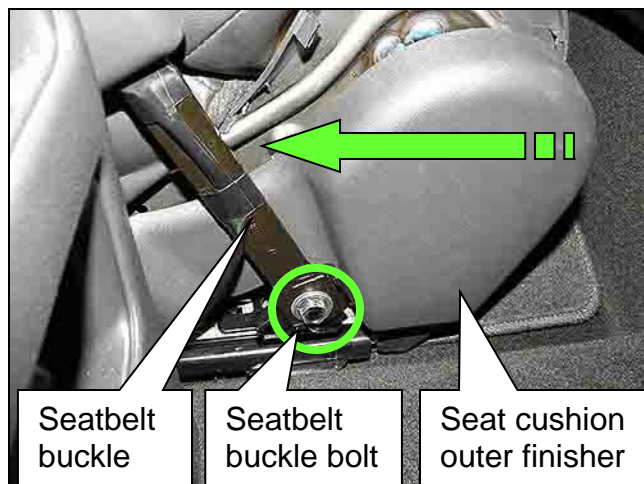


Figure 10

16. Torque the seatbelt buckle bolt (Figure 10).

- Bolt torque: 49 N•m (5.0 Kg-m, 36 ft-lb.)

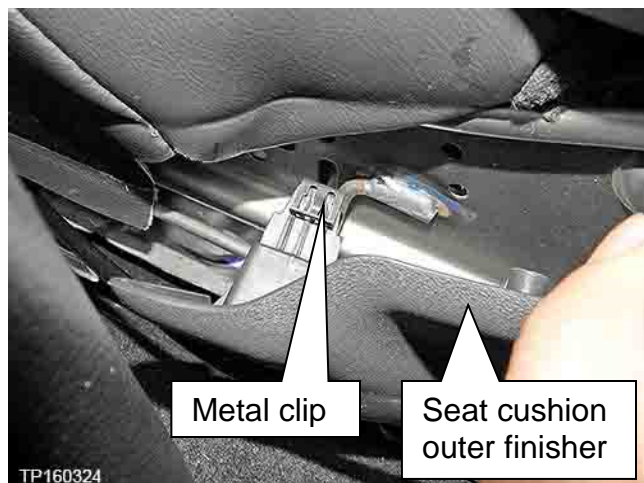


Figure 11

17. Reattach harnesses unclipped in step 4.

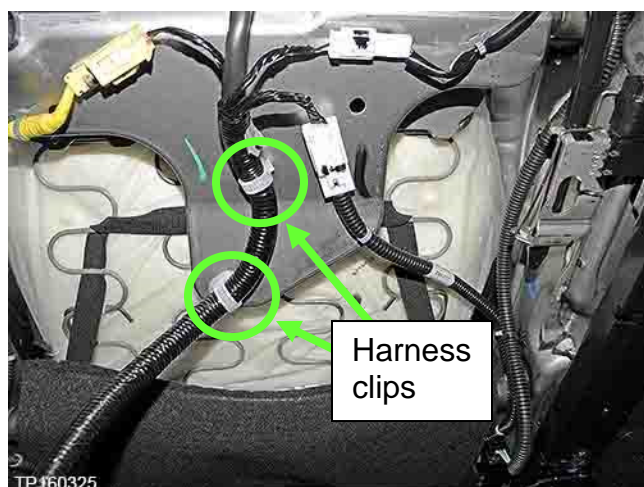


Figure 12

18. Gently move the passenger seat into its original position.

- Align the guide pin on the left rear corner of the seat track (Figure 13) and insert into guide pin hole.

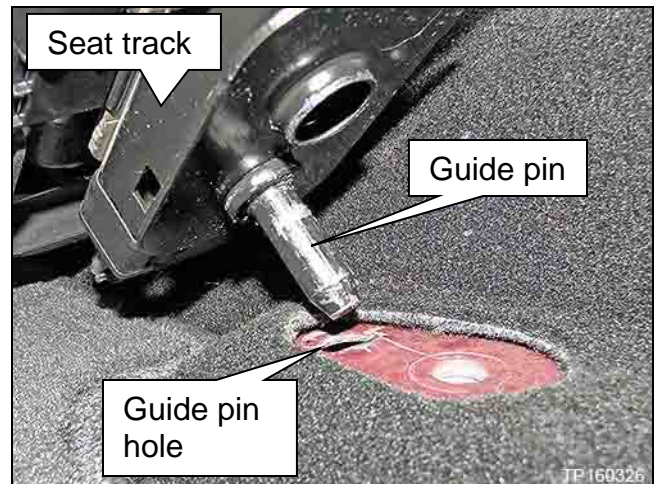


Figure 13

19. Install all four Torx seat track bolts and torque them in the pattern shown in Figure 14.

- Bolt torque: 40 N•m (4.1 Kg-m, **30 ft-lb.**)



Figure 14

20. Return both front seats to their original positions.

Airbag Diagnostic Sensor Unit Reprogram

CAUTION:

- Connect the GR8 to the 12V battery and select ECM Power Supply Mode. If the vehicle battery voltage drops below 12.0V or above 15.5V during reprogramming, the Airbag Diagnostic Sensor Unit (ADSU) may be damaged.
- Be sure to turn OFF all vehicle electrical loads. If a vehicle electrical load remains ON, the ADSU may be damaged.
- Be sure to connect the AC Adapter. If the CONSULT PC battery voltage drops during reprogramming, the process will be interrupted and the ADSU may be damaged.

1. Make sure ASIST has been synchronized to the current date and all updates have been installed.

NOTE: The PC automatically gets applicable reprogramming software during ASIST synchronization.

2. Open the vehicle hood, connect GR8 and set to ECM Power Supply Mode.
3. Turn the ignition ON, engine OFF / not Ready.
4. Turn hazards ON.
5. Connect the CONSULT-III plus VI (C-III plus) to the vehicle.
6. Connect the VI to the CONSULT PC with a USB cable.
7. Start the CONSULT PC, open ASIST and then select “**R1608 & R1609 ACU Reprogram**” on ASIST under Specialty Tools (Figure 15).

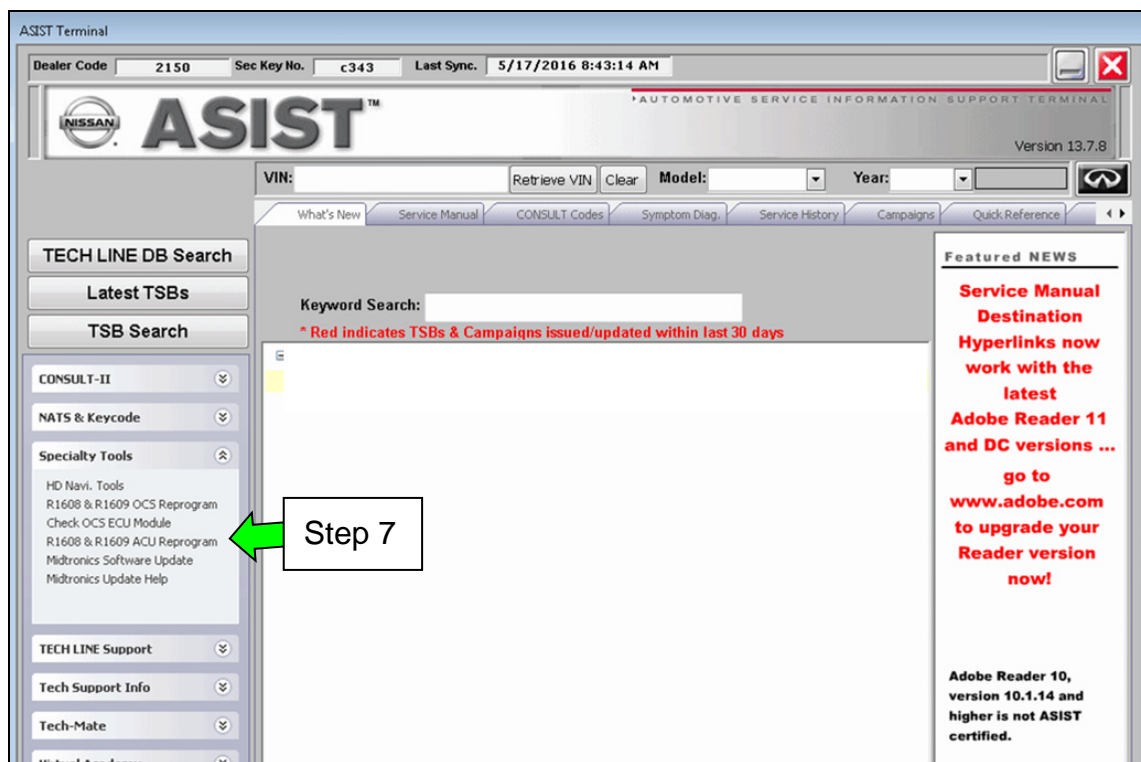


Figure 15

8. Read the on screen **CAUTION** statement before proceeding.

9. Select **Accept**.

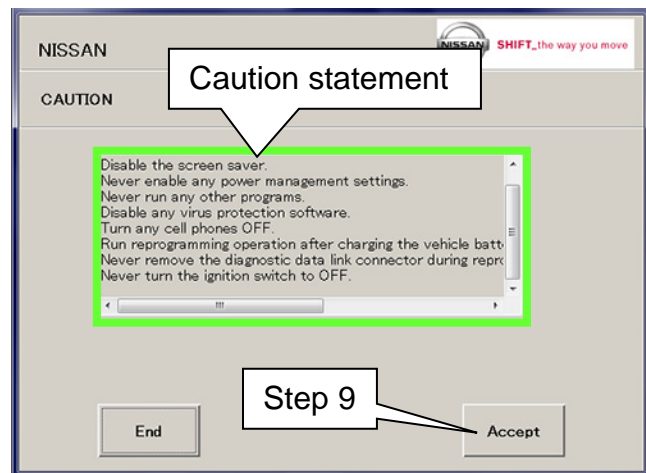


Figure 16

10. Select VI-2 from the drop down list and then **Next**.

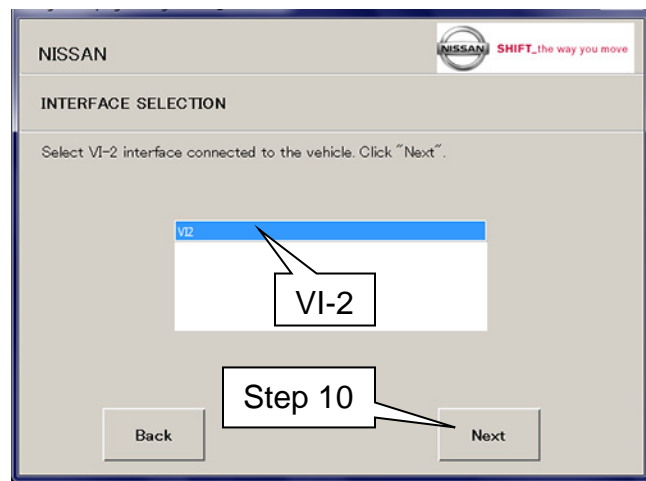


Figure 17

11. Select **Reprogramming**.

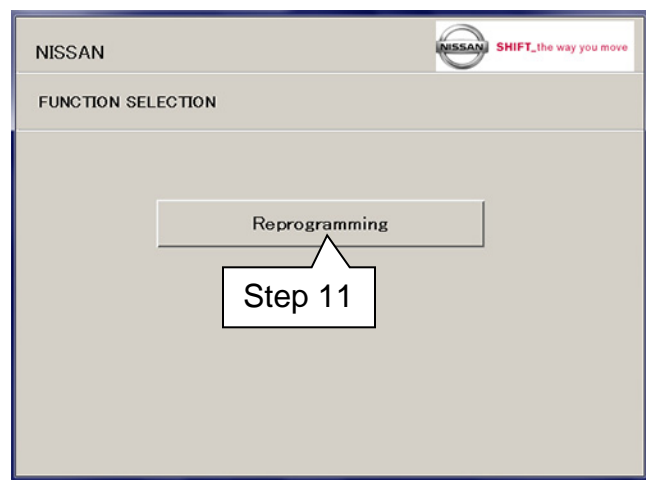


Figure 18

12. Select **AIRBAG**.

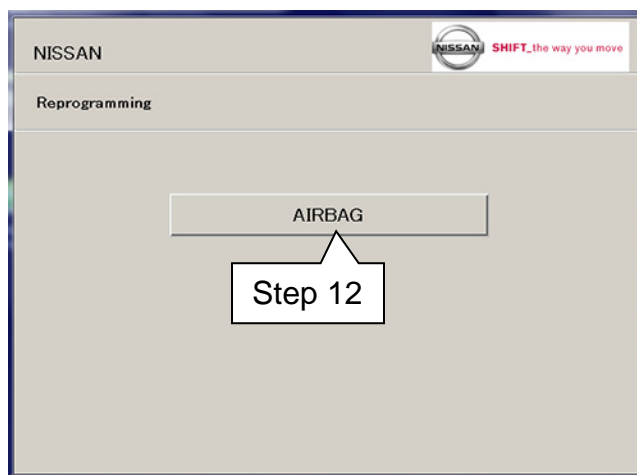


Figure 19

13. Is the screen in Figure 20 displayed?

NO: Proceed to step 14.

YES:

- Select **End** and discontinue airbag reprogramming.
- Proceed to **OCS Control Unit Reprogram**.

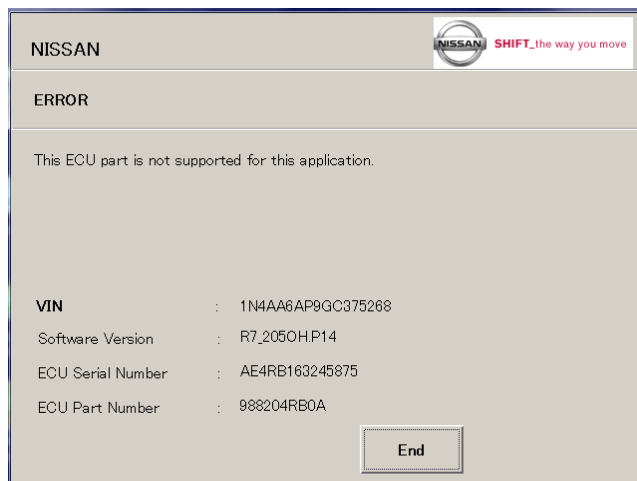


Figure 20

14. Confirm that the Battery Voltage is between 12.0V and 15.5V.

- If the Battery Voltage is not between 12.0V and 15.5V, resolve before proceeding.

15. Select **Start** and then proceed to page 12.

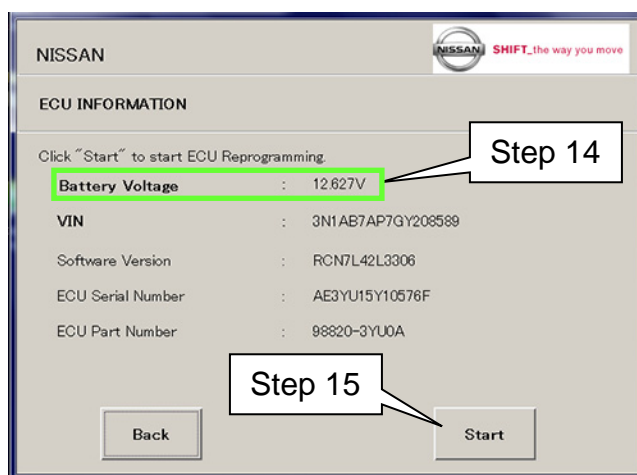


Figure 21

- **REPROGRAMMING PROGRESS** screen will be displayed (Figure 22).
- Reprogram will take approximately 3 minutes.
- Once the reprogramming has finished the screen in Figure 23 will be displayed.
- **WARNING:** Airbag control unit damage may occur if reprogramming is interrupted.

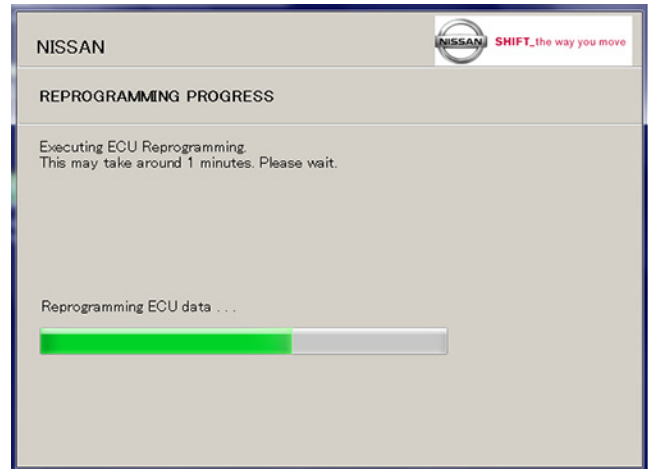


Figure 22

16. Confirm that the “Software Version(Before)” and “Software Version(After)” are different.

17. Select **End**.

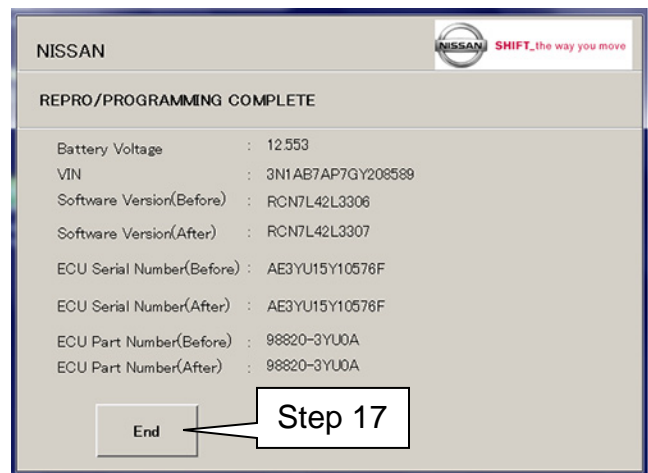


Figure 23

18. Save the confirmation page, print and attach it to the repair order.

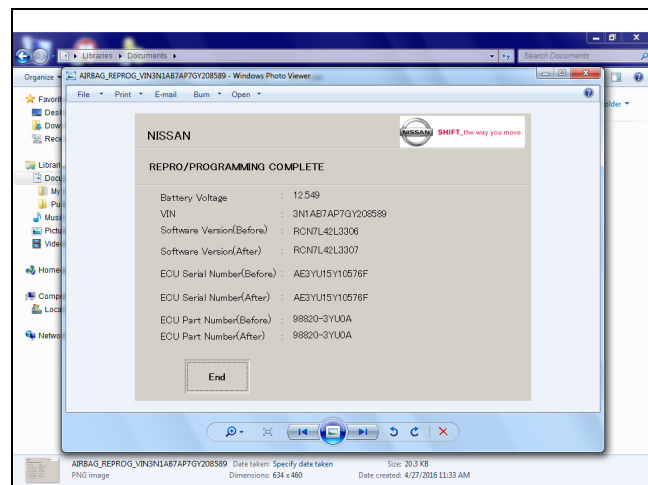


Figure 24

Leave the ignition ON and proceed to **OCS Control Unit Reprogram** on the next page.

OCS Control Unit Reprogram

IMPORTANT: Seatbelt buckle bracket **MUST** be installed before OCS Control Unit Reprogramming is performed.

NOTE: In this Service Procedure, OCS is sometimes referred to as ODS.

1. Install the driver for the J-51594 OCS reprogramming cable as follows:
 - a. Keep the PC connected to the internet.
 - b. Connect the J-51594 OCS reprogramming cable to the PC USB port.
 - c. Wait 1 minute, the drivers will install automatically.

NOTE: Step 1 above is only required the first time this procedure is performed. It is recommended that it be performed at the beginning of each day to confirm you have the latest software installed in your PC.

2. Turn the ignition ON, engine OFF / not Ready (if not still ON) and turn ON the hazard warning flasher lights (if not still ON).
3. Connect the J-51594 OCS reprogramming cable:
 - Connect to the vehicle's DLC connector and the PC USB port.
 - Make sure the cable is securely connected at both ends.
4. Prepare the vehicle for OCS Reprogramming as follows:
 - **Level the vehicle**
 - **No objects on the passenger seat.**
 - **No occupants in the vehicle – including the servicing technician.**
 - PC is outside of the vehicle on a suitable support.
 - Do not set the PC on the vehicle.
 - Do not touch the vehicle during the OCS Reprogramming.
 - Minimize vibrations of the vehicle.

5. Open ASIST (if not already open).
6. Select “R1608 & R1609 OCS Reprogram” on ASIST under Specialty Tools (Figure 25).

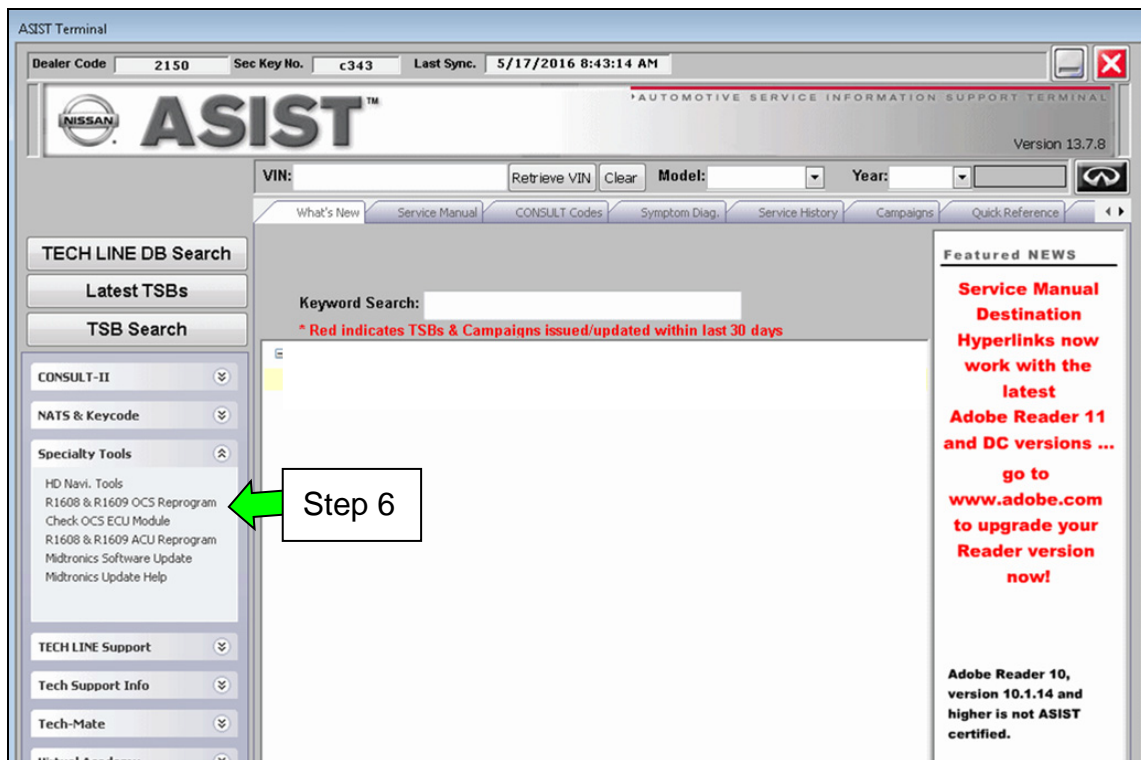


Figure 25

NOTE: If you get a black message screen as shown in Figure 26, this indicates that the reprogramming cable is not connected, or the cable driver did not install correctly.

- a. Close ODS Repro.
- b. Close ASIST.
- c. Start over from step 1 on page 13.

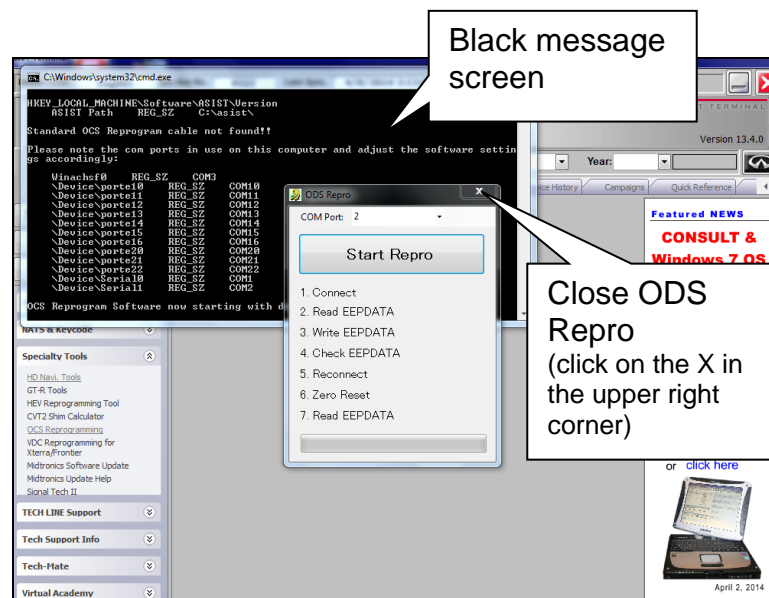


Figure 26

7. Select **Start Repro**.

NOTE: If the error message “an error occurred on connection” displays:

- a. Disconnect the J-51594 OCS reprogramming cable, both ends.
- b. Reconnect the cable; make sure it is securely connected at both ends.

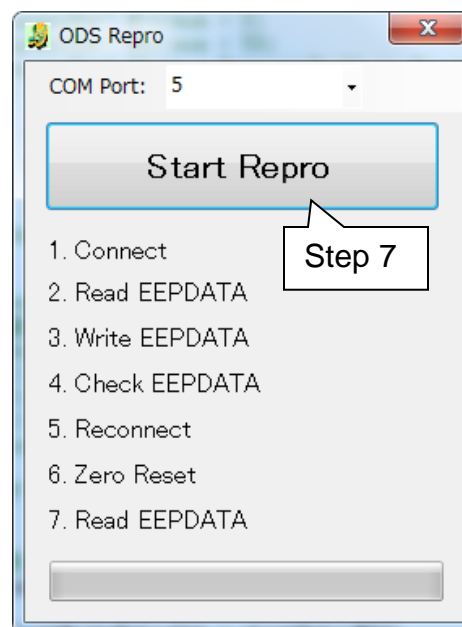


Figure 27

8. Turn the ignition ON (engine OFF).

9. Select **OK**.

- After selecting OK in Figure 28, the OCS reprogramming will start.

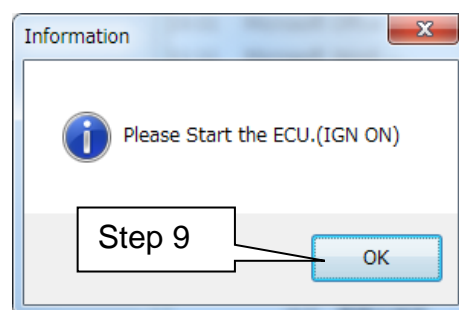


Figure 28

- Items 1 through 4 (Figure 29) will likely complete quickly.
- If the OCS reprogramming stops (displays NG) at item 1, 2, 3 or 4, refer to Figures 34 through 37 on pages 18 and 19.

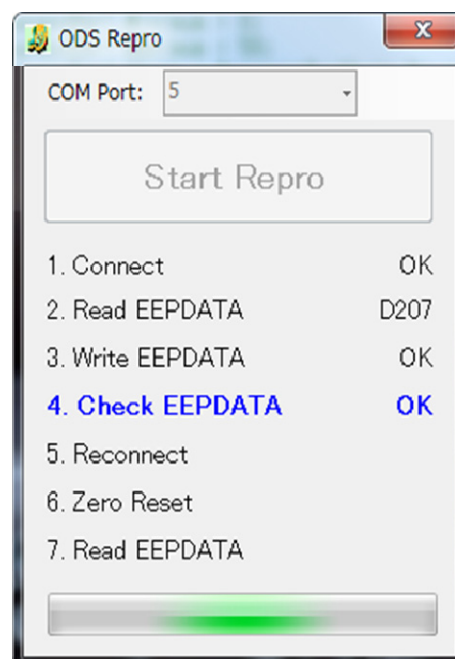


Figure 29

10. Cycle the ignition OFF > ON.

11. Select **OK**.

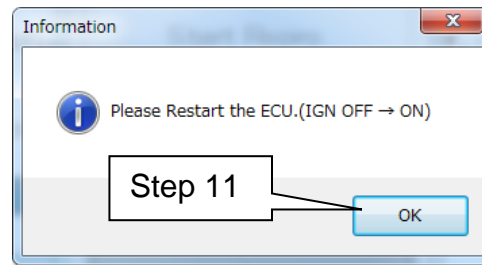


Figure 30

- After selecting OK in Figure 30, the OCS reprogramming will likely complete items 5 through 7 quickly (see "Complete" screen, Figure 32 below).
- If the OCS reprogramming stops (displays NG) at item 5, 6 or 7, refer to Figures 38 through 40 on pages 20 and 21.

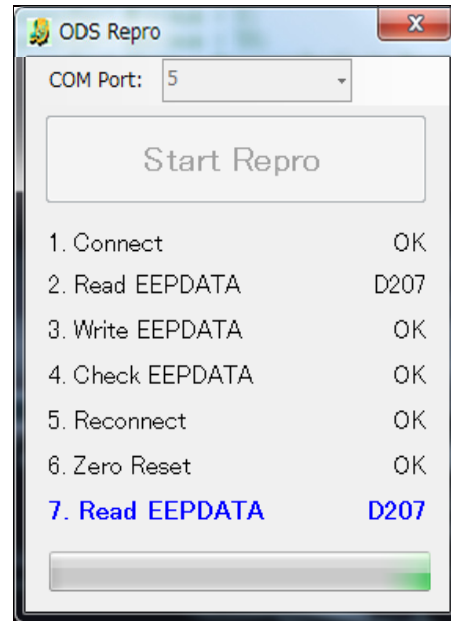


Figure 31

12 When this screen displays (Figure 32), OCS reprogramming is complete.

13. Select **OK**.

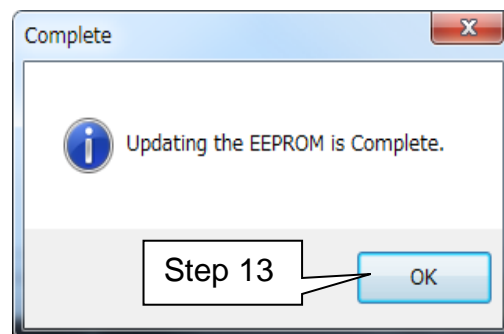


Figure 32

14. Close the program (click on the red X in the upper right corner).

15. Turn the ignition OFF.

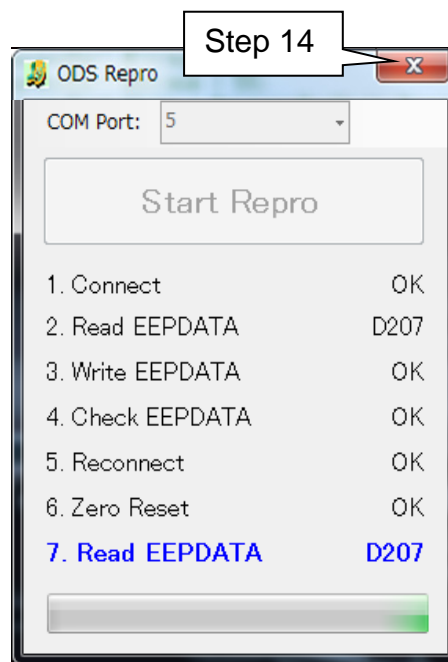




Figure 33

16. Disconnect the J-51594 OCS reprogramming cable.

17. Turn the ignition ON and observe the air bag warning light and the front passenger air bag status light:

- The air bag warning light  should illuminate for 7 seconds and then go out.
- The front passenger airbag status light  should illuminate for 7 seconds and then either stay illuminated or go out, depending on the occupation of the front passenger seat.

NOTE: If the air bag warning light or the front passenger airbag status light does not operate as described above, there may be an issue not covered by this campaign. Refer to ASIST and the appropriate ESM for additional diagnostic and repair information.

OCS Reprogramming is Complete

NOTE:

- Zero Point Reset was included in the reprogramming – it is not necessary to perform as a separate step.
- Figures 34 through 40 on pages 18 through 21 are provided as reference if the OCS reprogramming stops (displays NG) at one of the items (1-7).

APPENDIX

- #1 - If Connect indicates NG:
 - a. Click OK on the accompanying error message.
 - b. Turn the ignition OFF.
 - c. Close ODS Repro (click on the red X in the upper right corner).
 - d. Restart from step 1 on page 13.

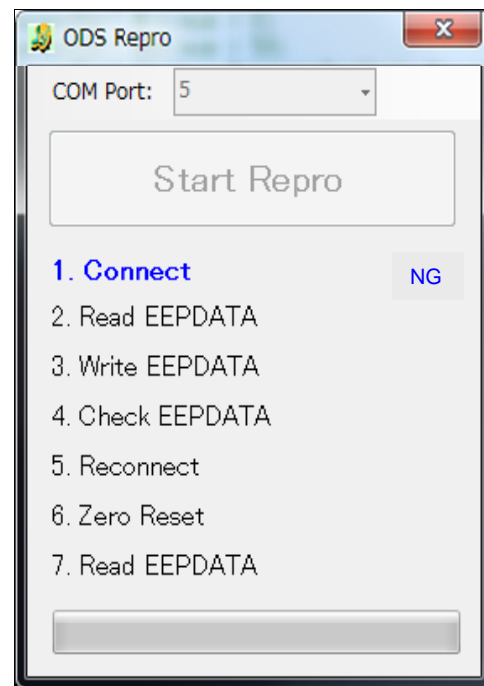


Figure 34

- #2 - If Read EEPROMDATA indicates NG:
 - a. Click OK on the accompanying error message.
 - b. Turn the ignition OFF.
 - c. Close ODS Repro (click on the red X in the upper right corner).
 - d. Restart from step 1 on page 13.

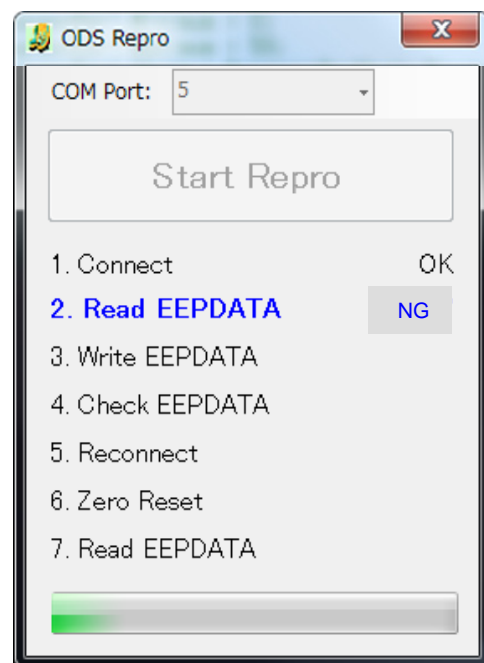


Figure 35

- #3 - If Write EEPROMDATA indicates NG:
 - a. Click OK on the accompanying error message.
 - b. Turn the ignition OFF.
 - c. Close ODS Repro (click on the red X in the upper right corner).
 - d. Restart from step 1 on page 13.

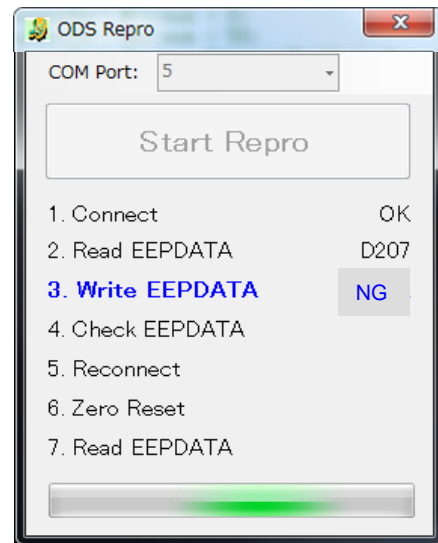


Figure 36

- #4 - If Check EEPROMDATA indicates NG:
 - a. Click OK on the accompanying error message.
 - b. Turn the ignition OFF.
 - c. Close ODS Repro (click on the red X in the upper right corner).
 - d. Restart from step 1 on page 13.

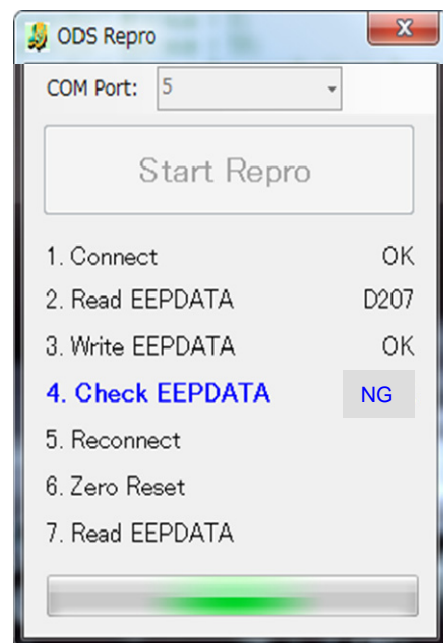


Figure 37

- #5 - If Reconnect indicates NG:
 - a. Click OK on the accompanying error message.
 - b. Turn the ignition OFF.
 - c. Close ODS Repro (click on the red X in the upper right corner).
 - d. Restart from step 1 on page 13.

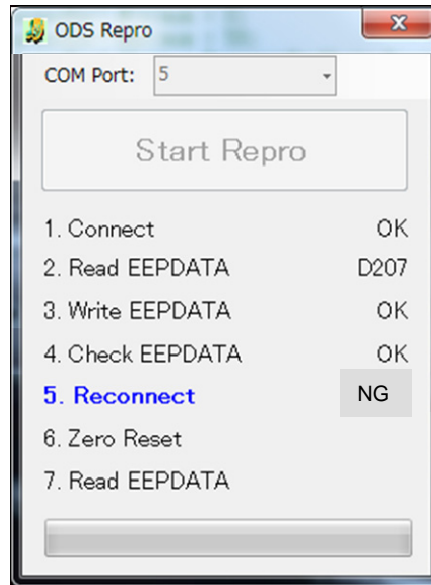


Figure 38

- #6 - If Zero Reset indicates NG:
 - a. Click OK on the accompanying error message.
 - b. Cycle the ignition OFF > ON.
 - If needed, retry ignition OFF > ON 5 times.
 - c. If Zero Reset still indicates NG, close ODS Repro (click on the red X in the upper right corner), and restart from step 1 on page 13.

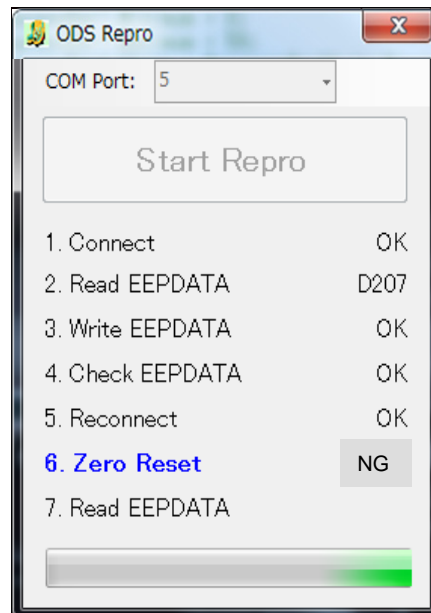


Figure 39

- #7 - If Read EEPROMDATA indicates NG:
 - a. Click OK on the accompanying error message.
 - b. Turn the ignition OFF.
 - c. Close ODS Repro (click on the red X in the upper right corner).
 - d. Restart from step 1 on page 13.

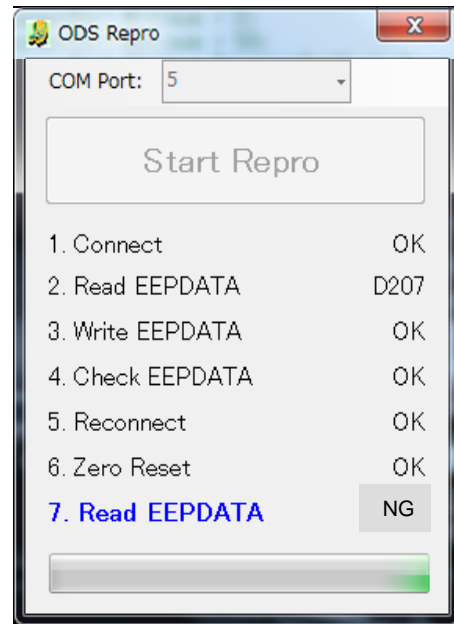
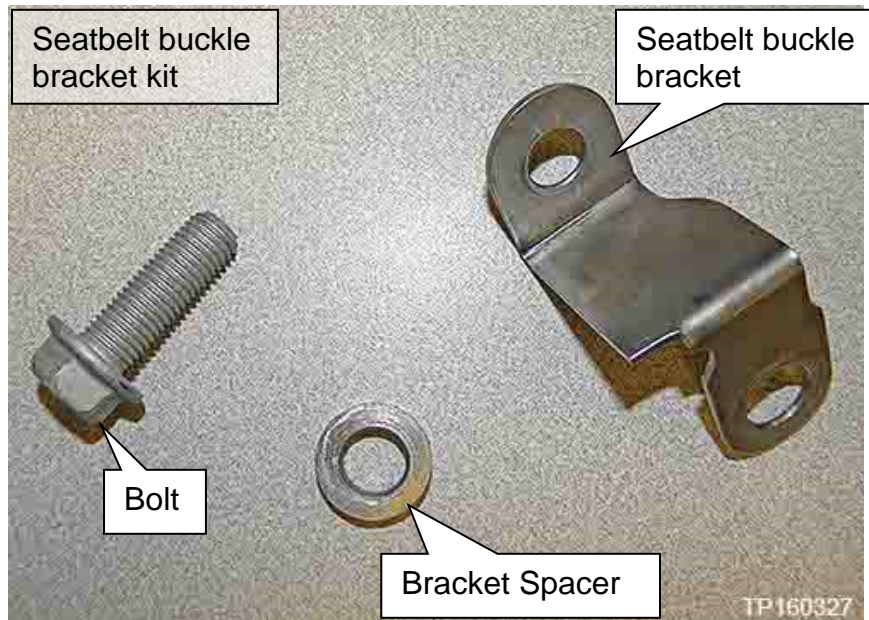


Figure 40

PARTS INFORMATION

DESCRIPTION	PART #	QUANTITY
Leg Assy-Front LH (Seatbelt Buckle Bracket Kit)	87110-9AN0A	1



CLAIMS INFORMATION

Submit a Campaign (CM) line claim using the following claims coding:

CAMPAIGN ("CM") ID	DESCRIPTION	OP CODE	FRT
R1608	Install Seatbelt Buckle Bracket and Reprogram	R16080	0.6 hrs.


FRONT PASSENGER AIR BAG STATUS LIGHT OPERATION

NOTE: Please print this page and place a copy in the vehicle.

Recall Campaign R1608 changes the operation of the passenger air bag status light.

- The passenger air bag status light will now be ON (illuminated) when the front passenger seat is empty.

Below is additional information regarding the operation of the passenger air bag status light.

The front passenger seat is equipped with an occupant classification sensor (weight sensor) that turns the front passenger air bag on or off depending on the weight applied to the front passenger seat. The status of the front passenger air bag (ON or OFF) is indicated by the front passenger air bag status light  which is located on the instrument panel. After the ignition switch is placed in the "ON" position, the front passenger air bag status light on the instrument panel illuminates for about 7 seconds and then turns off or remains illuminated depending on the front passenger seat occupied status. The light operates as follows:



CONDITION	DESCRIPTION	PASSENGER AIR BAG INDICATOR LIGHT	FRONT PASSENGER AIR BAG STATUS
Empty	Empty front passenger seat	ON (illuminated)	INHIBITED
Nobody/Somebody	Bag or Child or Child Restraint or Small Adult in the front passenger seat	ON (illuminated)	INHIBITED
Adult	Adult in front passenger seat	OFF (dark)	ACTIVATED