



RECALL CAMPAIGN BULLETIN

Reference:

NTB16-054b

Date:

August 25, 2016

VOLUNTARY SAFETY RECALL CAMPAIGN OCCUPANT CLASSIFICATION SYSTEM CONTROL UNIT REPLACEMENT

This bulletin has been amended to add an alternative method for performing zero point reset using BOSCH MTS 6513. No other changes were made. Please discard previous versions of this bulletin.

CAMPAIGN ID #: R1607
NHTSA #: 16V-244
APPLIED VEHICLE: 2013-2016 LEAF (ZE0)
2013-2016 Pathfinder (R52)
2014-2015 Pathfinder Hybrid (R52)
2013-2016 NV200 (M20)
2014-2016 Taxi

Check Service COMM to confirm campaign eligibility.

INTRODUCTION

Nissan is conducting a Voluntary Safety Recall Campaign on certain specific Nissan vehicles, listed in APPLIED VEHICLES above, to replace the Occupant Classification System (OCS) control unit. This service will be performed at no charge to owners for parts or labor.

IDENTIFICATION NUMBER

Nissan has assigned identification number R1607 to this campaign. This number must appear on all communications and documentation of any nature dealing with this campaign.

DEALER RESPONSIBILITY

It is the dealer's responsibility to check Service Comm for the campaign status on each vehicle falling within the range of this voluntary safety recall campaign which for any reason enters the service department. This includes vehicles purchased from private parties or presented by transient (tourist) owners and vehicles in a dealer's inventory. **Federal law requires that new vehicles in dealer inventory which are the subject of a safety recall must be corrected prior to sale. Failure to do so can result in civil penalties by the National Highway Traffic Safety Administration.** While federal law applies only to new vehicles, Nissan strongly encourages dealers to correct any used vehicles in their inventory before they are retailed.

Nissan Bulletins are intended for use by qualified technicians, not 'do-it-yourselfers'. Qualified technicians are properly trained individuals who have the equipment, tools, safety instruction, and know-how to do a job properly and safely. NOTE: If you believe that a described condition may apply to a particular vehicle, DO NOT assume that it does. See your Nissan dealer to determine if this applies to your vehicle.

Table of Contents

LEAF	Page 4
Pathfinder	Page 6
NV200 and Taxi	Page 8
Zero Point Reset Procedure	Page 10

CAMPAIGN INFORMATION

Front Passenger Air Bag Status Light

Performing the procedures in this bulletin (campaign R1607) changes the operation of the passenger air bag status light.

- After performing this campaign, the passenger air bag status light will be ON (illuminated) when the front passenger seat is empty.

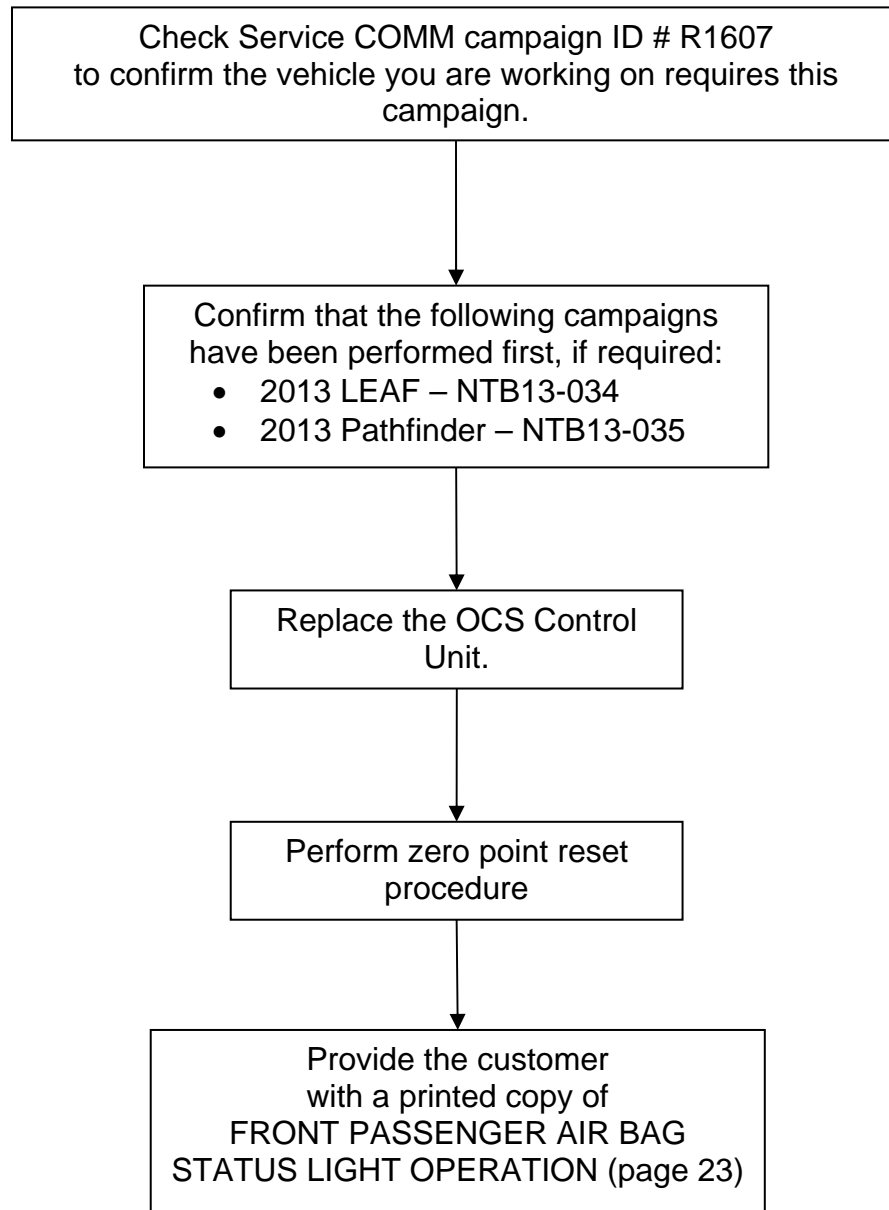


Air Bag Warning Light

This campaign does not change the operation of the air bag warning light.



Repair Overview



SERVICE PROCEDURE

LEAF

1. Turn the vehicle ON.
2. Write down the radio settings.

Presets	1	2	3	4	5	6
AM						
FM 1						
FM 2						
SAT 1						
SAT 2						
SAT 3						
Bass	Treble		Balance		Fade	Speed Sen. Vol.

3. **If equipped**, write down the customer preferred setting for the Automatic Air Conditioning System.
 - If needed, refer to System Settings in the HAC section of the Electronic Service Manual (ESM).
4. Check to see if the timer for “charging” or “climate control” is ON. If ON, turn OFF and make sure to turn back ON after the service is completed.
 - For charging timer on vehicles with navigation – write down which days are OFF, Timer 1 or Timer 2.
5. Turn the vehicle OFF.
6. Disconnect the Negative terminal of the vehicle 12V battery.

IMPORTANT: Refer to the ESM section, **PG – Power, Supply & Ground Elements** for the procedure and cautions when disconnecting the 12V battery.

7. Wait three minutes before continuing.
8. Move the front passenger seat forward about ½ of its travel.
 - Moving the seat forward will give additional working space to access the OCS control unit.

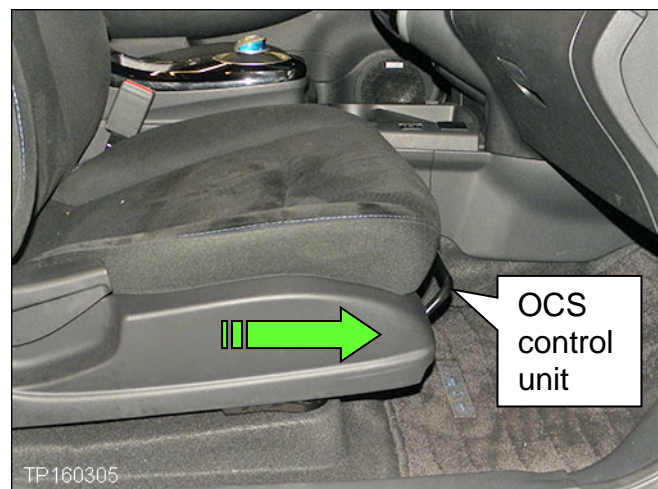


Figure 1

9. Locate the OCS control unit under the front in-board side of the seat cushion.
10. Disconnect the harness connector.
11. Remove the two screws and then remove the OCS control unit.

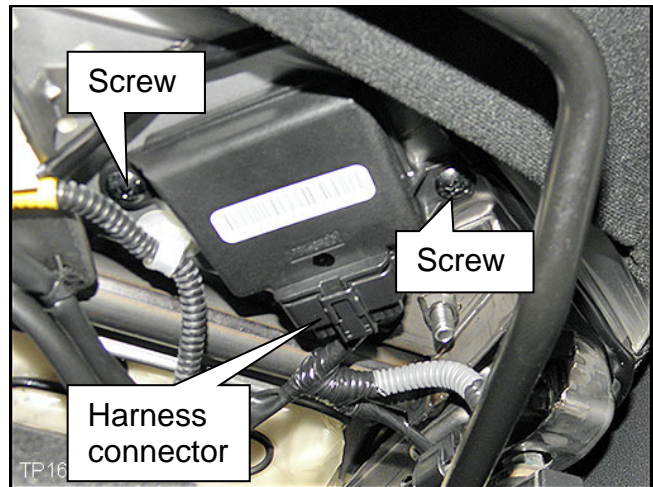


Figure 2

12. Select the correct OCS control unit (ODS ECU) from Parts Information and confirm that the pin count is the same as the OCS control unit being replaced.
13. Install the new OCS control unit in reverse order.
14. Connect the Negative battery terminal cable.
15. Reset/reinitialize systems as needed.
 - Refer to the ESM section, **PG – Power, Supply & Ground Elements** for a listing of systems that require reset/initialization after reconnecting the 12V battery.
 - Look in the PG section index for **ADDITIONAL SERVICE WHEN REMOVING BATTERY NEGATIVE TERMINAL**.
 - This list often includes items such as radio, power windows, clock, sunroof, etc.
16. Proceed to **Zero Point Reset (using CONSULT-III plus)** on page 10.

Pathfinder

1. Turn the ignition ON, engine OFF.
2. Write down the radio settings.

Presets	1	2	3	4	5	6
AM						
FM 1						
FM 2						
SAT 1						
SAT 2						
SAT 3						
Bass	Treble		Balance		Fade	Speed Sen. Vol.

3. **If equipped**, write down the customer preferred setting for the Automatic Air Conditioning System.
 - If needed, refer to System Settings in the HAC section of the Electronic Service Manual (ESM).

4. Turn the ignition OFF.

5. If equipped with power front passenger seat: Raise the front passenger seat cushion all the way up.

- Raising the seat cushion will give additional working space to access the OCS control unit.



Figure 3

6. Disconnect the Negative terminal of the vehicle 12V battery.

- Refer to the ESM section, **PG – Power, Supply & Ground Elements** for the procedure to disconnect the 12V battery.

7. Wait three minutes before continuing.

8. If equipped, remove the video distributor shown in Figure 4.

- Two bolts.

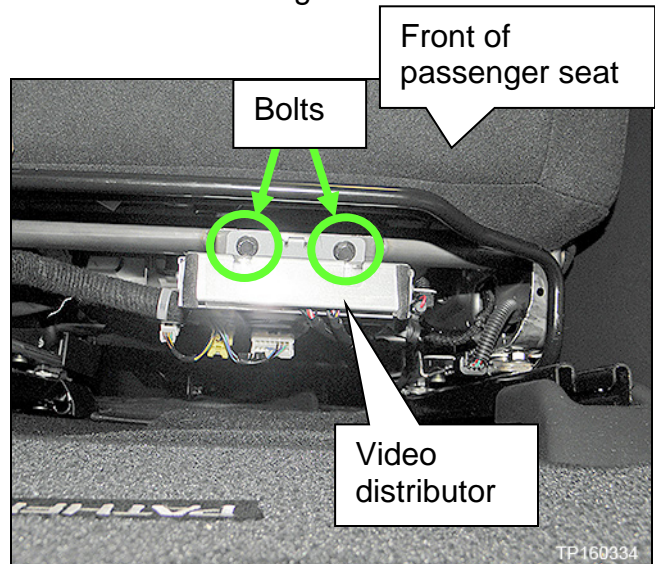


Figure 4

9. Locate the OCS control unit under the front edge of the seat cushion.

- With power seat, see Figure 5.
- With manual seat, see Figure 6.

10. Disconnect the harness connector.

11. Remove the two screws and then remove the OCS control unit.

With Power Seat

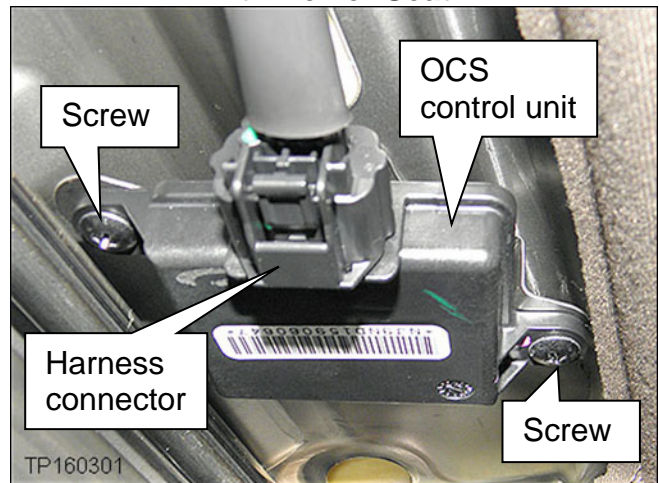


Figure 5

With Manual Seat

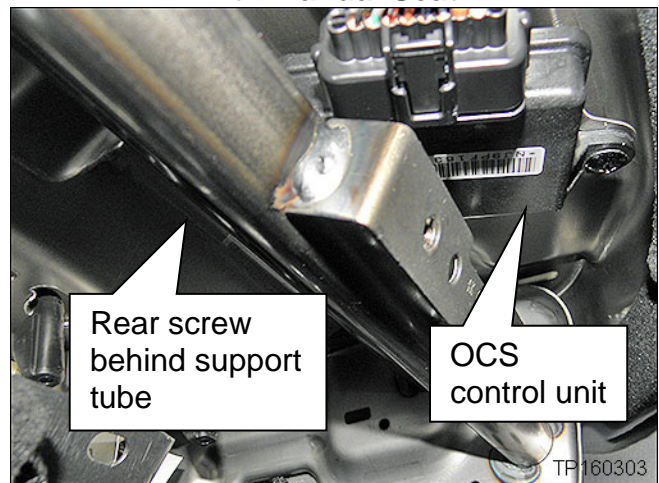


Figure 6

- For the manual seat, access the rear screw from behind the support tube.

12. Select the correct OCS control unit (ODS ECU) from Parts Information and confirm that the pin count is the same as the OCS control unit being replaced.

13. Install the new OCS control unit in reverse order.

14. Connect the Negative battery terminal cable.

15. Reset/reinitialize systems as needed.

- Refer to the ESM section, **PG – Power, Supply & Ground Elements** for a listing of systems that require reset/initialization after reconnecting the 12V battery.
- Look in the PG section index for **ADDITIONAL SERVICE WHEN REMOVING BATTERY NEGATIVE TERMINAL**.
- This list often includes items such as radio, power windows, clock, sunroof, etc.

16. Proceed to **Zero Point Reset (using CONSULT-III plus)** on page 10.

NV200 and Taxi

1. Turn the ignition OFF.
2. Disconnect the Negative terminal of the vehicle 12V battery.
 - Refer to the ESM section, **PG – Power, Supply & Ground Elements** for the procedure to disconnect the 12V battery.
3. Wait three minutes before continuing.
4. Remove the passenger seat storage bin as follows:
 - a. Open the passenger seat storage bin.
 - Lift UP to unlock and then pull straight out all the way (Figure 7).

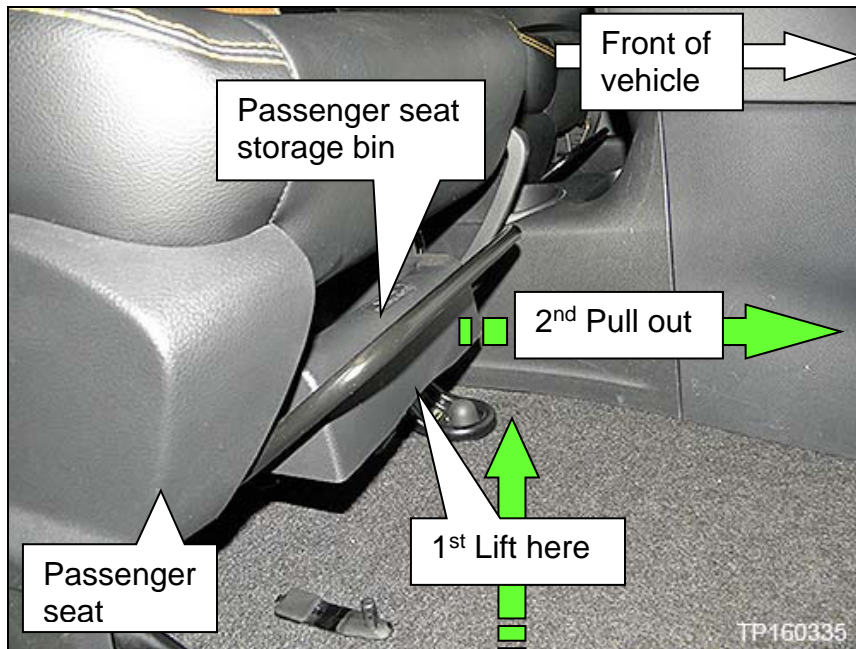


Figure 7

- b. While completely extended, lift UP again and then pull out to remove completely.

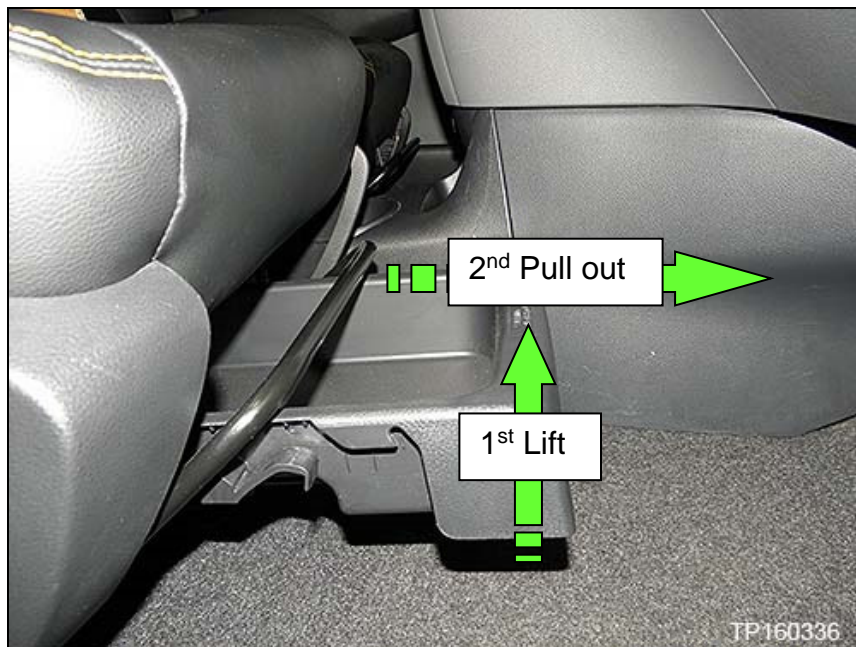


Figure 8

5. Remove two screws that attach the OCS control unit to the seat frame bottom shown in Figure 9.
6. Disconnect the harness connector from the OCS control unit.

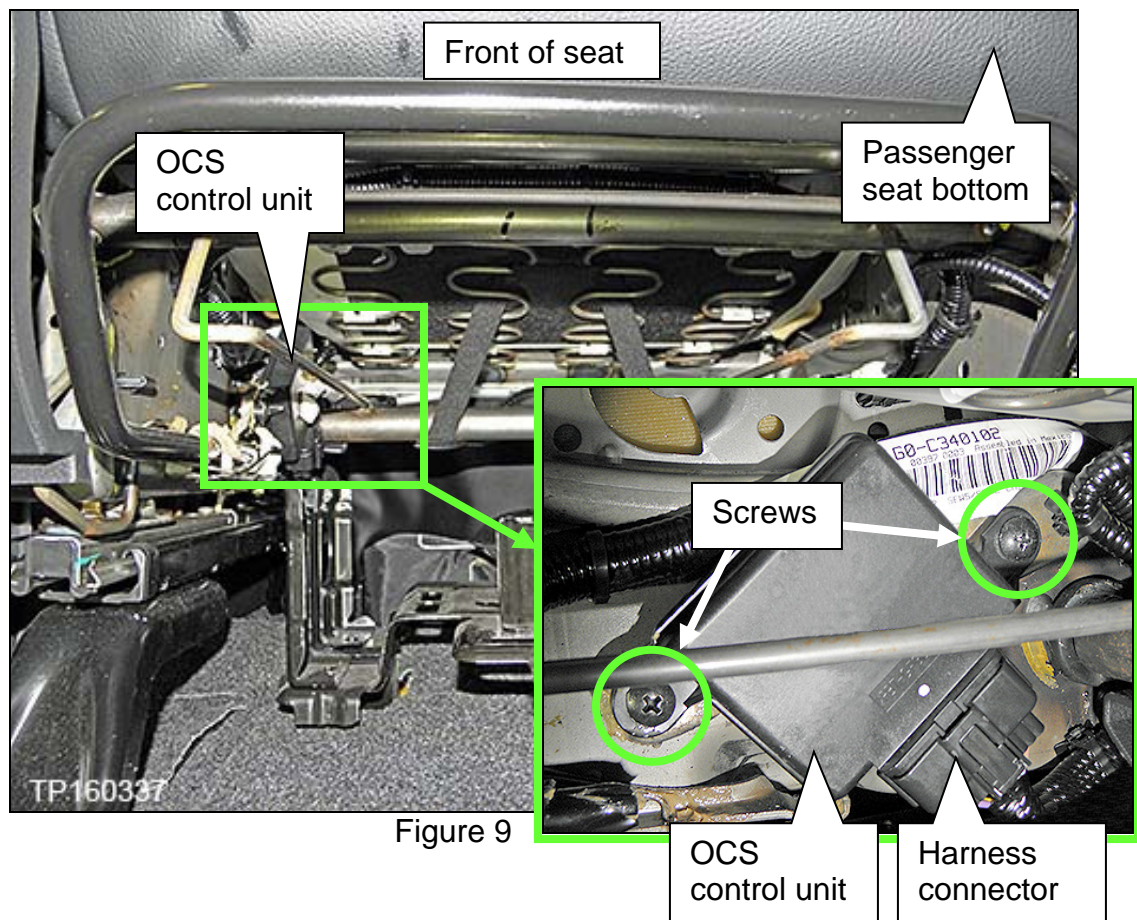


Figure 9

7. Select the correct OCS control unit (ODS ECU) from Parts Information and confirm that the pin count is the same as the OCS control unit being replaced.
8. Install the new OCS control unit in the reverse order of disassembly.
9. Reinstall the passenger seat storage bin.
10. Connect the Negative battery terminal cable.
11. Reset/reinitialize systems as needed.
 - Refer to the ESM section, **PG – Power, Supply & Ground Elements** for a listing of systems that require reset/initialization after reconnecting the 12V battery.
 - Look in the PG section index for **ADDITIONAL SERVICE WHEN REMOVING BATTERY NEGATIVE TERMINAL**.
 - This list often includes items such as radio, power windows, clock, sunroof, etc.
12. Proceed to **Zero Point Reset (using CONSULT-III plus)** on page 10.

Zero Point Reset (using CONSULT-III plus)

NOTE: Zero point reset can also be done using BOSH MTS 6513 (see page 15).

1. Prepare the vehicle for OCS zero point reset as follows:
 - **Level the vehicle.**
 - **No objects on the passenger seat or in the storage bin.**
 - **No occupants in the vehicle – including the servicing technician.**
 - PC is outside of the vehicle on a suitable support.
 - Do not set the PC on the vehicle.
 - Do not touch the vehicle during the OCS zero point reset.
 - Minimize vibrations of the vehicle.
2. Connect the CONSULT PC to the vehicle with plus VI.
3. Open / start CONSULT-III PLUS (C-III plus).
4. Turn the ignition ON, with engine OFF (engine not running/not in ready mode).
5. Wait for the plus VI to be recognized.
 - The Serial No. will display when the plus VI is recognized.
6. Select **Diagnosis (One System)**.
7. Scroll C-III plus (All systems) and select **OCCUPANT DETECTION**.

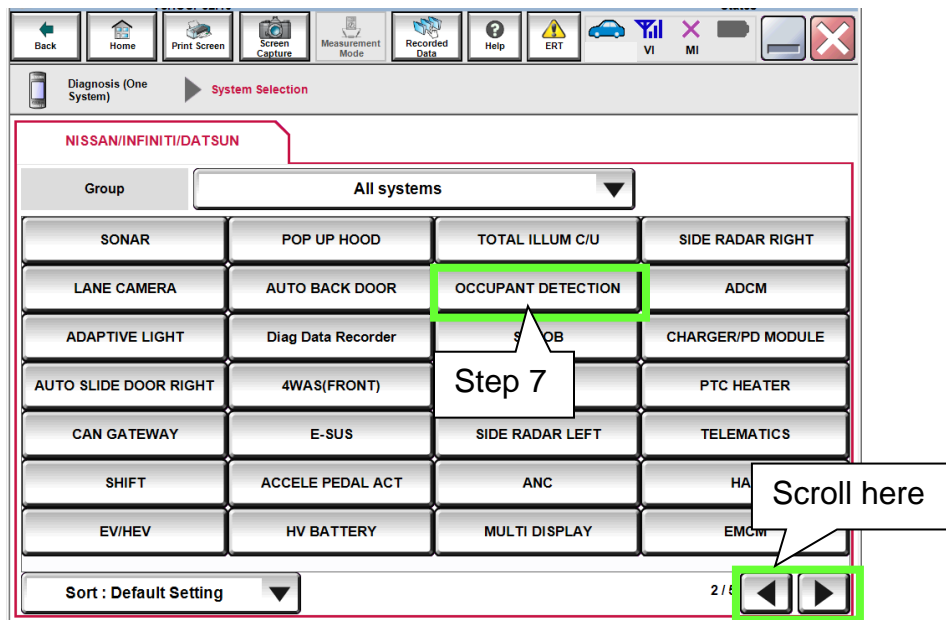


Figure 10

8. Select **Zero point reset function**.

9. Select **Start**.

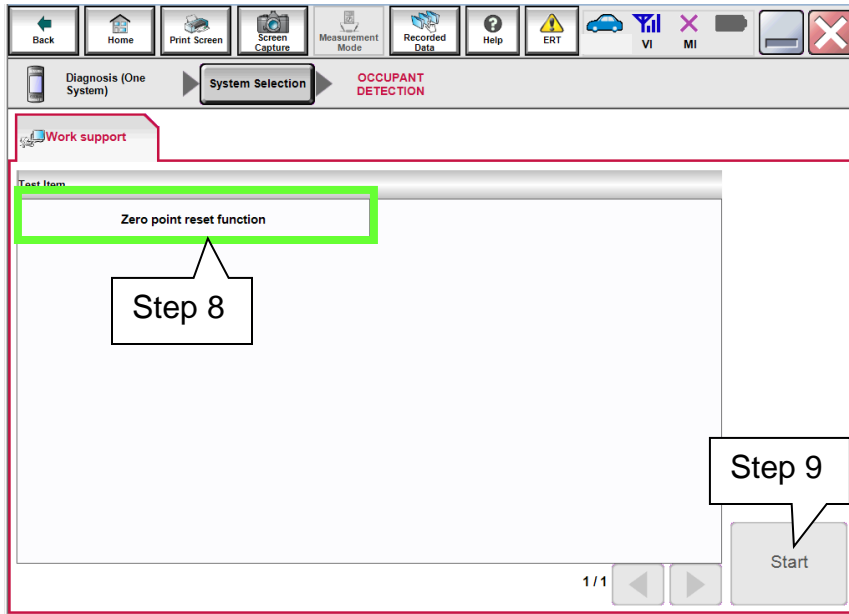


Figure 11

10. Select **Next**.

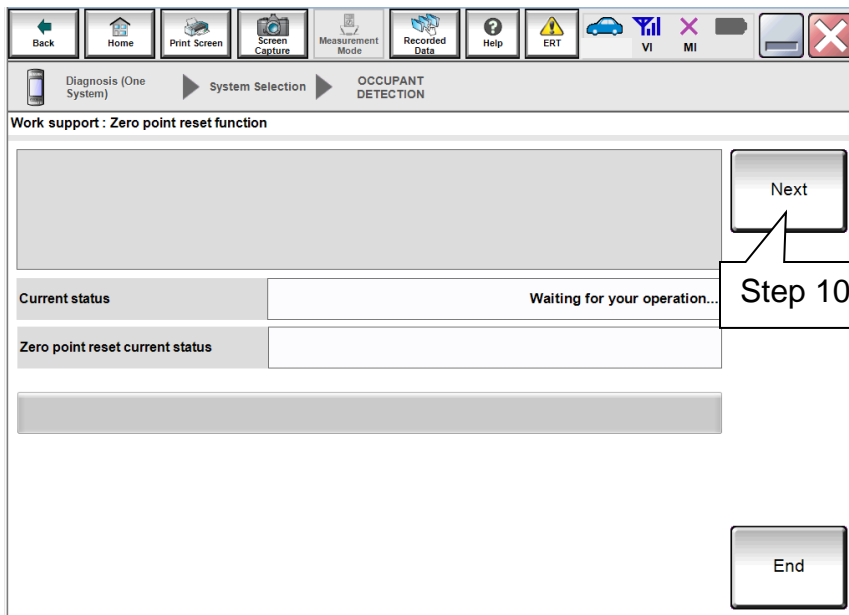


Figure 12

11. Select **Start** and then proceed to step 12.

- After selecting **Start**, if Figure 14 is displayed:
 - a. Check the OCS control unit and confirm that harness connector is completely seated.
 - b. Turn the ignition OFF and then restart procedure from step 4 on page 10.

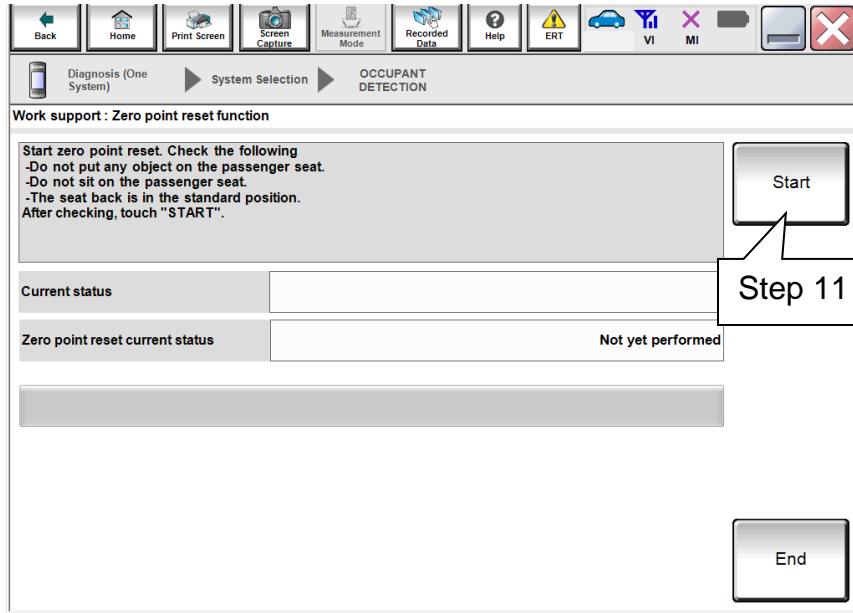


Figure 13

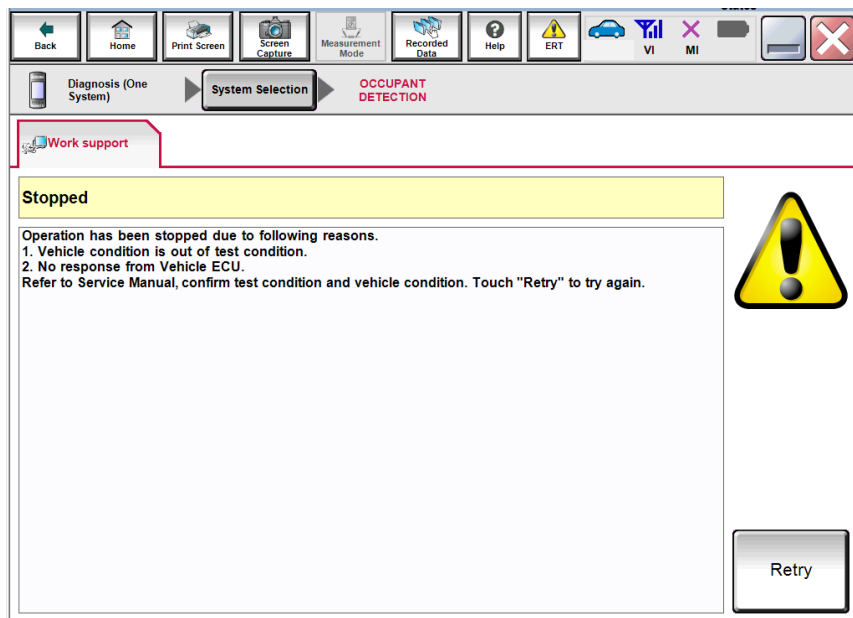


Figure 14

12.Zero point reset will display “EXECUTING”.

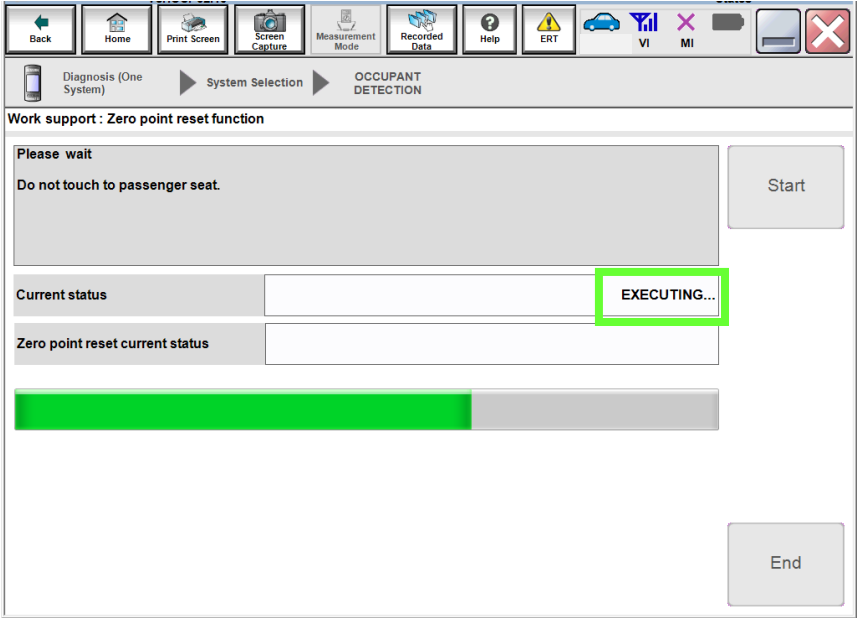


Figure 15

13.When finished, "Completed" will display next to “Current status”.

- Select **End** and then proceed to step 14.

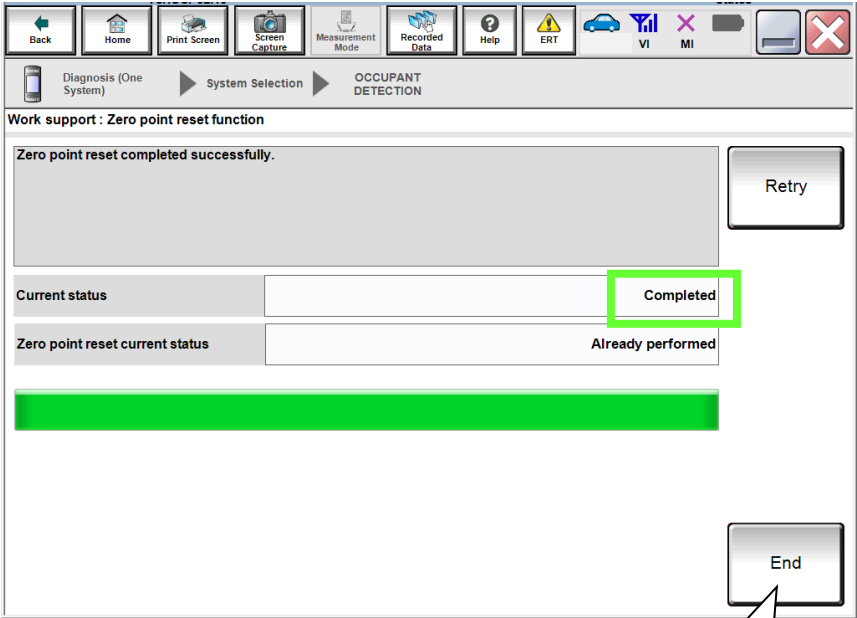




Figure 16

Step 13

14. Turn the ignition OFF and then back ON and observe the air bag warning light and front passenger airbag status light:

- The air bag warning light  should illuminate for 7 seconds and then go out.
- The front passenger airbag status light  should illuminate for 7 seconds and then either stay illuminated or go out depending on the occupation of the front passenger seat.

NOTE: If the air bag warning light or the front passenger airbag status light does not operate as described above there may be an issue not covered by this campaign. Refer to ASIST and the appropriate Service Manual for additional diagnostic and repair information.

Alternative Method to Perform Zero Point Reset For Campaign R1607

NOTE:

- This procedure is an alternative method to perform zero point reset for campaign R1607.
- The primary zero point reset method is using CONSULT-III plus.
- DO NOT perform the steps in the following pages if the procedure using CONSULT-III plus has already been performed.
- This method uses BOSCH MTS 6513.

REQUIRED SPECIAL TOOL – BOSCH MTS 6513



Figure A1

- One BOSCH MTS 6513 was shipped to each dealer. Additional tools can be obtained from Tech-Mate at 1-800-662-2001.

BOSCH MTS 6513

Zero Point Reset

NOTE: Screens on the BOSCH MTS 6513 indicate ACU. This stands for Airbag Control Unit, which is the same as Airbag Diagnostic Sensor Unit.

1. Connect the BOSCH MTS 6513 to the vehicle Data Link Connector (DLC).
2. Wait for the BOSCH MTS 6513 to boot.
 - A beep will be heard.
 - A green light on the BOSCH MTS 6513 will indicate it is powered ON.
 - When boot-up is complete and the Start Screen (see Figure A2) is displayed, the BOSCH MTS 6513 is ready to perform zero point reset.

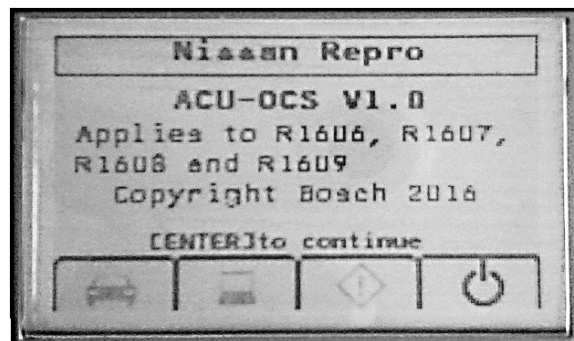


Figure A2

NOTE:

- On screen instructions will help guide you through the process.
- If the screen in Figure A2 does not display, the correct software has not been loaded into the BOSCH MTS 6513.

3. Select enter on the key pad.

NOTE: During this procedure you will be asked several times to “select enter on the key pad”. Each time, use the key pad enter button shown in Figure A3.

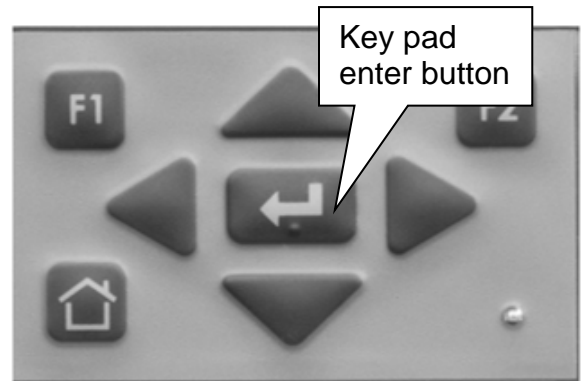


Figure A3

4. Turn the ignition ON (engine OFF / not Ready).
5. Select enter on the key pad.

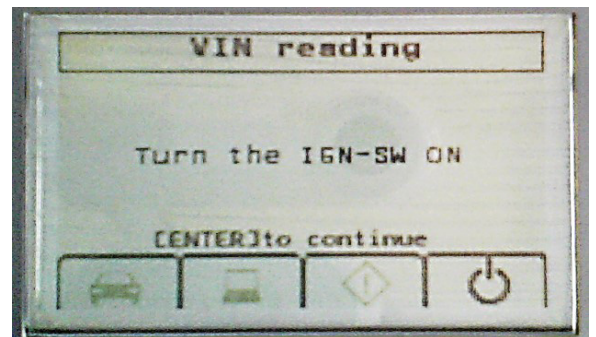


Figure A4

6. Select enter on the key pad.

NOTE: The VIN is read automatically.

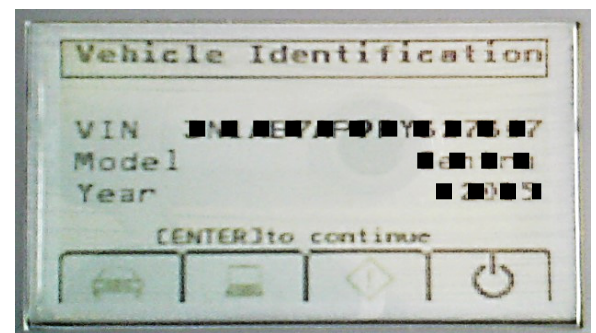


Figure A5

NOTE:

- System call will be performed.
- A progress bar will be displayed during system call (this will occur within just a few seconds).
- The screen in Figure A6 (next page) will display when system call is complete.
- If system call does not complete and the screen in Figure A6 does not display, the vehicle may not apply to this campaign, or the incorrect campaign is being performed.

7. When this screen displays (Figure A6), go to the next step for zero point reset preparation.

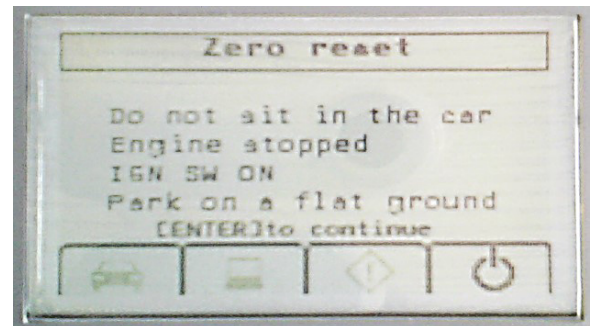


Figure A6

8. Prepare the vehicle for zero point reset as follows:
- **Level the vehicle.**
 - **No objects on the passenger seat.**
 - **No occupants in the vehicle – including the servicing technician.**
 - Do not touch the vehicle during the zero point reset.
 - Minimize vibrations of the vehicle.
9. Select enter on the key pad.

10. Turn the ignition OFF.

11. Select enter on the key pad.

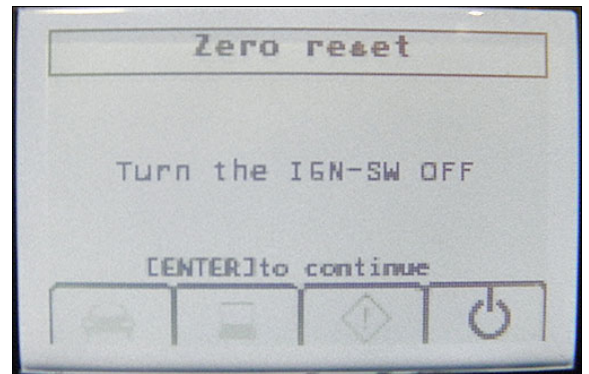


Figure A7

12. Turn the ignition ON (engine OFF / not Ready).

13. Select enter on the key pad.

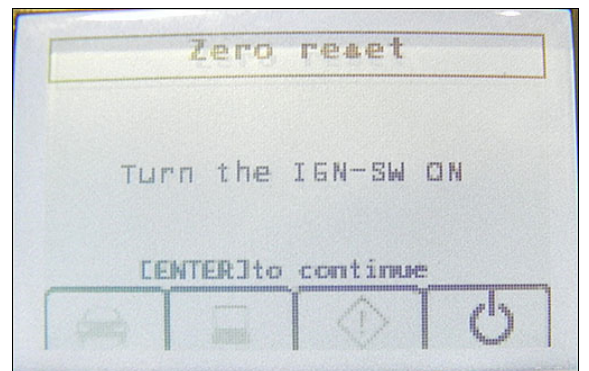


Figure A8

- The screen in Figure A9 will display while zero point reset is being performed.

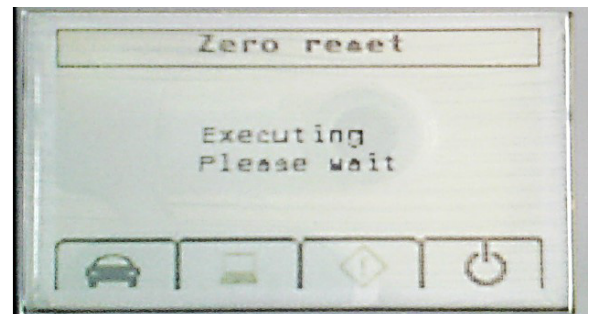


Figure A9

- The screen in Figure A10 will display when zero point reset is complete.

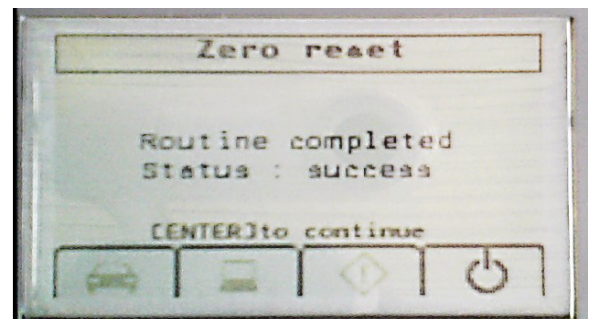


Figure A10



14. The reprogramming process is complete. Select the enter button on the key pad to display the result screens.

15. Turn the ignition OFF.

16. Disconnect the BOSCH MTS 6513 from the vehicle DLC.

IMPORTANT: Make sure the BOSCH MTS 6513 powers down (wait about 30 seconds) before connecting to another vehicle. This will confirm any saved vehicle information is erased.

17. Turn the ignition ON and observe the air bag warning light and the front passenger air bag status light:

- The air bag warning light  should illuminate for 7 seconds and then go out.
- The front passenger airbag status light  should illuminate for 7 seconds and then either stay illuminated or go out, depending on the occupation of the front passenger seat.

NOTE: If the air bag warning light or the front passenger airbag status light does not operate as described above, there may be an issue not covered by this campaign. Refer to ASIST and the appropriate ESM for additional diagnostic and repair information.

PART INFORMATION

MODEL YEAR AND DATE (MO/YR)		DESCRIPTION	PART #	QUANTITY
Pathfinder	2013; All	ODS ECU (16 pin connector)	98856-9PA5A	1
	2014; All	ODS ECU (16 pin connector)	98856-9PF8A	1
	2015; manufacture date (MO/YR) 11/14 and before			
	All vehicles with manufacture date (MO/YR) 12/14	ODS ECU (16 pin connector)	98856-9PF8A (1)	1
		ODS ECU (10 pin connector)	98856-9PD5A (1)	
	2015; manufacture date (MO/YR) 01/15 and after	ODS ECU (10 pin connector)	98856-9PD5A	1
2016				
LEAF	2013-2014; All	ODS ECU (16 pin connector)	98856-4NP8A	1
	2015; manufacture date (MO/YR) 12/14 and before			
	All vehicles with manufacture date (MO/YR) 1/15	ODS ECU (16 pin connector)	98856-4NP8A (1)	1
		ODS ECU (10 pin connector)	98856-9RC5A (1)	
	2015; manufacture date (MO/YR) 02/15 and after	ODS ECU (10 pin connector)	98856-9RC5A	1
2016				
NV200	2013-2014; All	ODS ECU (16 pin connector)	98856-9SE8A	1
	2015; manufacture date (MO/YR) 01/15 and before			
	All vehicles with manufacture date (MO/YR) 2/15	ODS ECU (16 pin connector)	98856-9SE8A (1)	1
		ODS ECU (10 pin connector)	98856-9SD5A (1)	
	2015; manufacture date (MO/YR) 03/15 and after	ODS ECU (10 pin connector)	98856-9SD5A	1
2016				
Taxi	2014; All	ODS ECU (16 pin connector)	98856-9SE8A	1
	2015; manufacture date (MO/YR) 01/15 and before			
	All vehicles with manufacture date (MO/YR) 2/15	ODS ECU (16 pin connector)	98856-9SE8A (1)	1
		ODS ECU (10 pin connector)	98856-9SD5A (1)	
	2015; manufacture date (MO/YR) 03/15 and after	ODS ECU (10 pin connector)	98856-9SD5A	1
2016				

(1) Confirm that the number of pins of the new part are the same as the original (see Figures B1 and B2 on the next page).

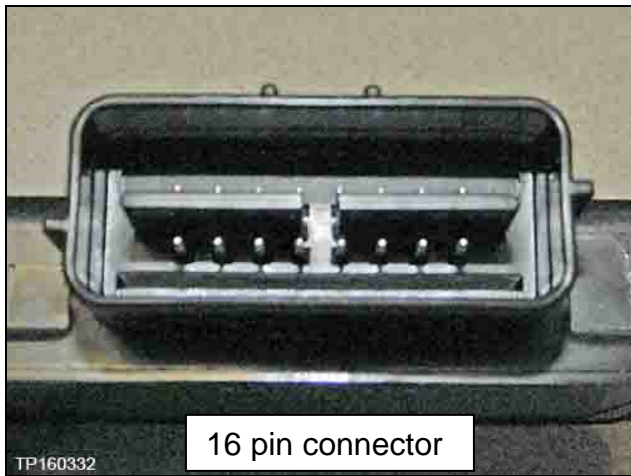


Figure B1

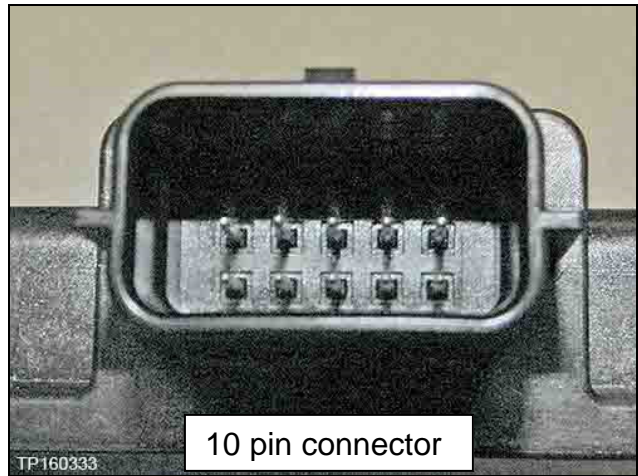


Figure B2

CLAIMS INFORMATION

Submit a “CM” line claim using the following claims coding:

Pathfinder, NV200, Taxi

CAMPAIGN (“CM”) I.D.	DESCRIPTION	OP CODE	FRT
R1607	Replace ODS ECU (OCS control unit)	R16070	0.7 hrs.

OR

Pathfinder Hybrid

CAMPAIGN (“CM”) I.D.	DESCRIPTION	OP CODE	FRT
R1607	Replace ODS ECU (OCS control unit)	R16071	0.8 hrs.

OR

LEAF

CAMPAIGN (“CM”) I.D.	DESCRIPTION	OP CODE	FRT
R1607	Replace ODS ECU (OCS control unit)	R16072	0.6 hrs.


FRONT PASSENGER AIR BAG STATUS LIGHT OPERATION

NOTE: Please print this page and place a copy in the vehicle.

Recall Campaign R1607 changes the operation of the passenger air bag status light.

- The passenger air bag status light will now be ON (illuminated) when the front passenger seat is empty.

Below is additional information regarding the operation of the passenger air bag status light.

The front passenger seat is equipped with an occupant classification sensor (weight sensor) that turns the front passenger air bag on or off depending on the weight applied to the front passenger seat. The status of the front passenger air bag (ON or OFF) is indicated by the front passenger air bag status light  which is located on the instrument panel. After the ignition switch is placed in the “ON” position, the front passenger air bag status light on the instrument panel illuminates for about 7 seconds and then turns off or remains illuminated depending on the front passenger seat occupied status. The light operates as follows:



CONDITION	DESCRIPTION	PASSENGER AIR BAG INDICATOR LIGHT	FRONT PASSENGER AIR BAG STATUS
Empty	Empty front passenger seat	ON (illuminated)	INHIBITED
Nobody/Somebody	Bag or Child or Child Restraint or Small Adult in the front passenger seat	ON (illuminated)	INHIBITED
Adult	Adult in front passenger seat	OFF (dark)	ACTIVATED