



SERVICE BULLETIN

Reference:

NTB16-105

Date:

November 7, 2016

VOLUNTARY SAFETY RECALL CAMPAIGN 2014-2016 ROGUE LIFT GATE STAY REPLACEMENT

CAMPAIGN ID #: PC459
NHTSA #: 16V-219

APPLIED VEHICLE: 2014-2016 Rogue (T32)

Check Service COMM to confirm campaign eligibility.

INTRODUCTION

Nissan is conducting a Voluntary Safety Recall Campaign on certain specific 2014-2016 Rogue vehicles to replace the lift gate stays. This service will be performed at no cost to the customer for parts or labor.

IDENTIFICATION NUMBER

Nissan has assigned identification number PC459 to this campaign. This number must appear on all communications and documentation of any nature dealing with this campaign.

DEALER RESPONSIBILITY

It is the dealer's responsibility to check Service Comm for the campaign status on each vehicle falling within the range of this voluntary recall which for any reason enters the service department. This includes vehicles purchased from private parties or presented by transient (tourist) owners and vehicles in a dealer's inventory. **Federal law requires that new vehicles in dealer inventory which are the subject of a safety recall must be corrected prior to sale. Failure to do so can result in civil penalties by the National Highway Traffic Safety Administration.** While federal law applies only to new vehicles, Nissan strongly encourages dealers to correct any used vehicles in their inventory before they are retailed.

Nissan Bulletins are intended for use by qualified technicians, not 'do-it-yourselfers'. Qualified technicians are properly trained individuals who have the equipment, tools, safety instruction, and know-how to do a job properly and safely. **NOTE:** If you believe that a described condition may apply to a particular vehicle, DO NOT assume that it does. See your Nissan dealer to determine if this applies to your vehicle.

Required Special Tools

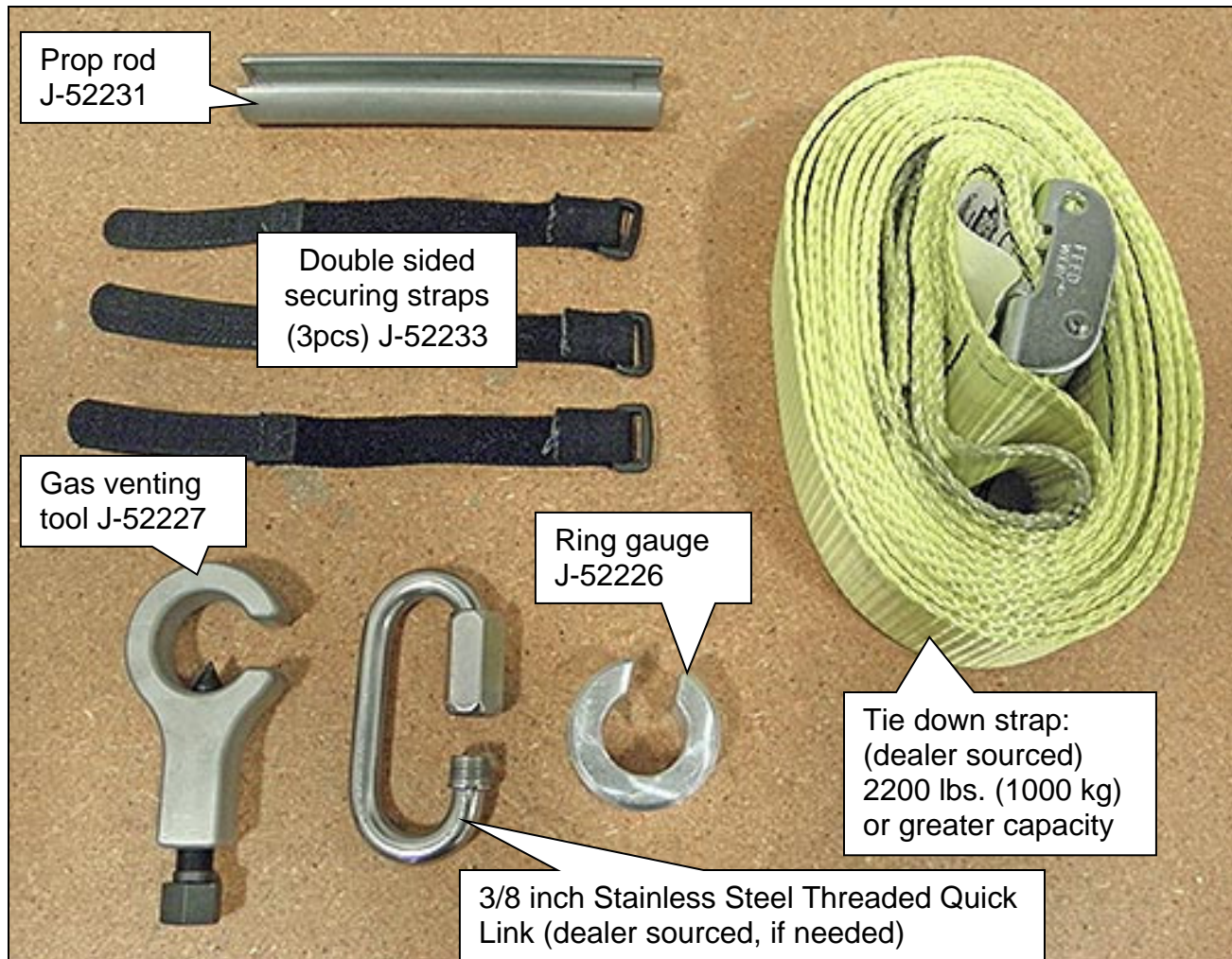


Figure A

- Each dealer will be shipped, at no charge:
 - Prop rod (J-52231)
 - Double sided securing straps (3pcs) (J-52233)
 - Gas venting tool (J-52227)
 - Ring gauge (J-52226)
 - Additional tools can be ordered from Tech•Mate at 1-800-662-2001.
- **CAUTION: DO NOT use power tools or impact tools with the Gas venting tool – use hand tools only.**
- Obtain the tie down strap and 3/8 inch Stainless Steel Threaded Quick Link (2200 lbs. [1000 kg] or greater capacity) from a local source.

SERVICE PROCEDURE

Venting Lift Gate Stays

1. Install the gas venting tool (tool # J-52227) over the lift gate stay being replaced (Figure 1) and then allow it to rest at the bottom of the lift gate stay (Figure 2).

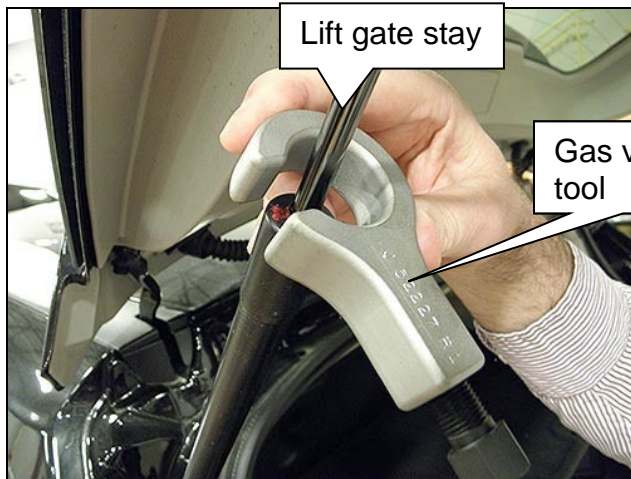


Figure 1



Figure 2

2. Install prop rod (tool # J-52231) onto the lift gate stay with the enlarged opening facing the top.
3. Hold the prop rod in place with a securing strap (tool # J-52233).
4. Pull the rear door down so that the top end of the lift gate stay inserts into the enlarged opening of the prop rod.

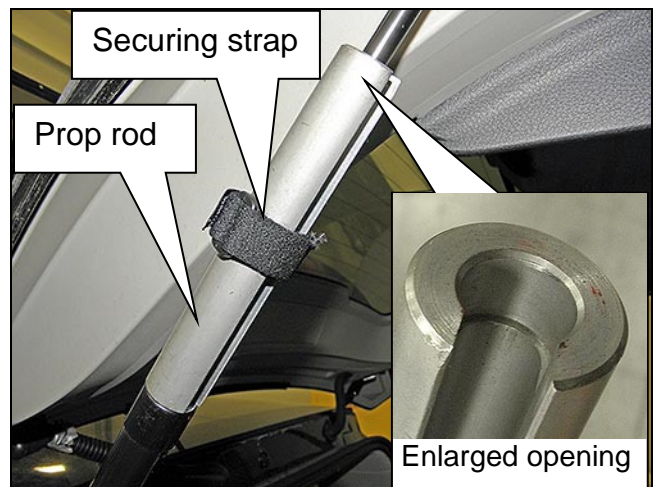


Figure 3

5. Hold the lift gate stay in place with a tie down strap as shown in Figure 4.

- Install the tie down strap as a continuous loop over the top and bottom ends of the lift gate stay.

NOTE: The strap is looped around the bottom hinge (not shown) of the lift gate stay in a similar manner to the top as shown in Figure 4.

- Tighten the tie down strap to hold the lift gate stay against the prop rod.

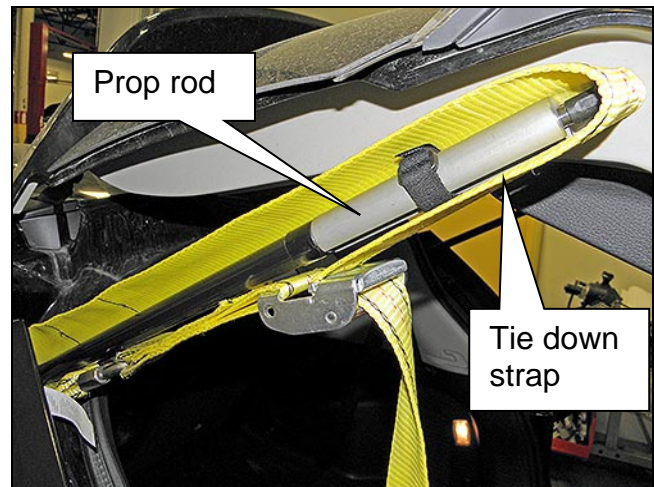


Figure 4

WARNING: If the lift gate stay comes apart during repair it could cause severe personal injury. Use a tie down strap rated at 2200 lbs. (1000 kg) or greater to hold the lift gate stay in a collapsed position.

6. Position the gas venting tool 140 mm (approximately 6 inches) from the bottom of the lift gate stay (Figure 5) and hold in place by finger tightening.

7. Hold the tie down strap in place at the top and bottom with two securing straps (tool # J-52233) as shown in Figure 5.

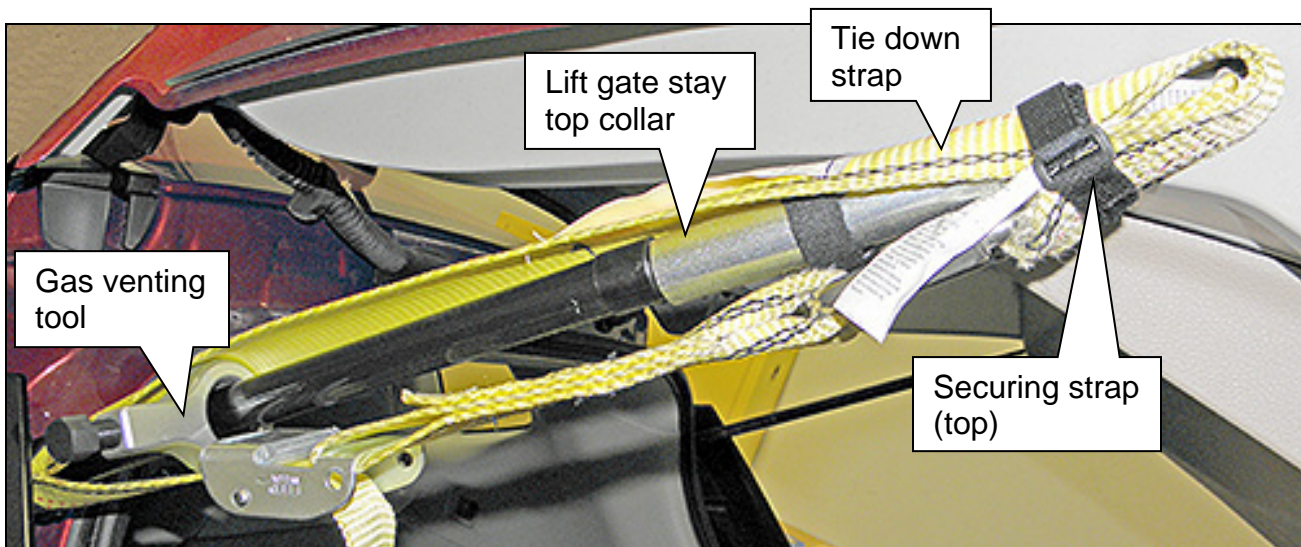


Figure 5

8. Place a support under the back door with a suitable tool.

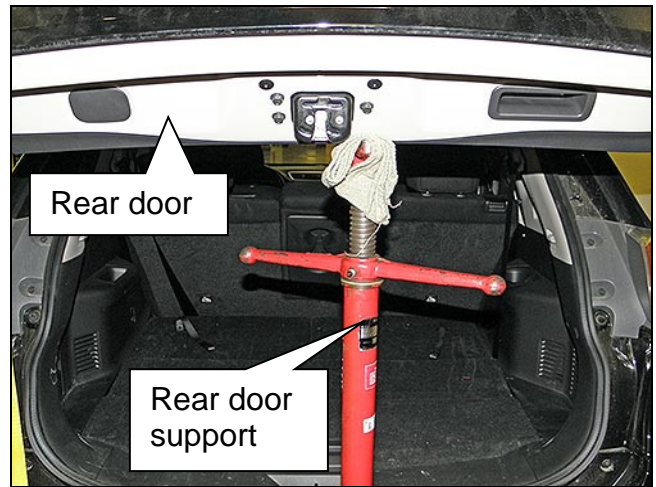


Figure 6

9. Tighten the gas venting tool (to puncture lift gate stay) until it starts to vent.
 - Allow all gas pressure to completely vent before proceeding.

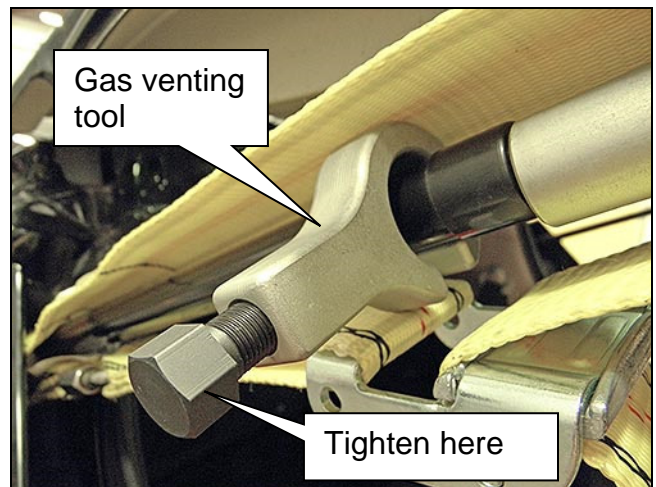


Figure 7

10. Perform steps 1-9 to the opposite side, and then proceed to **Removal and Installation of Lift Gate Struts.**

Removal and Installation of Lift Gate Stays

WARNING: Lift gate stays MUST be vented first before removing them from the vehicle to prevent personal injury or vehicle damage.

1. Release the metal clip located on the back door stay rod end socket using a suitable tool (Figure 8).

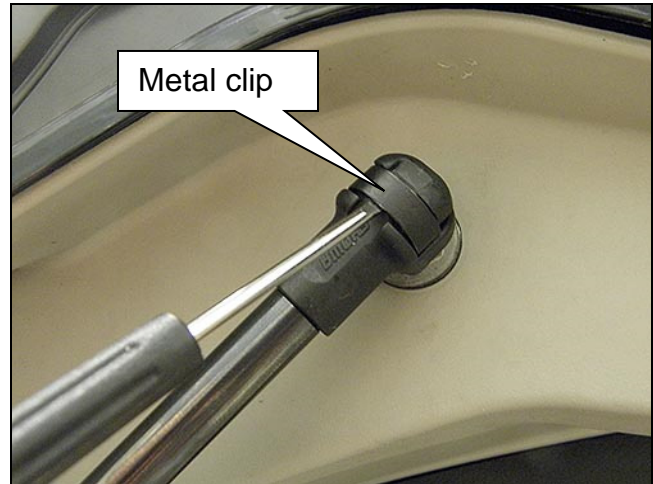


Figure 8

2. Remove the back door stay from the back door.

3. Unbolt the back door stay from the vehicle (Figure 9).
 - 2 bolts.
 - Reassembly bolt torque:
5.5 N•m (0.56 kg-m, **49 in-lb.**)

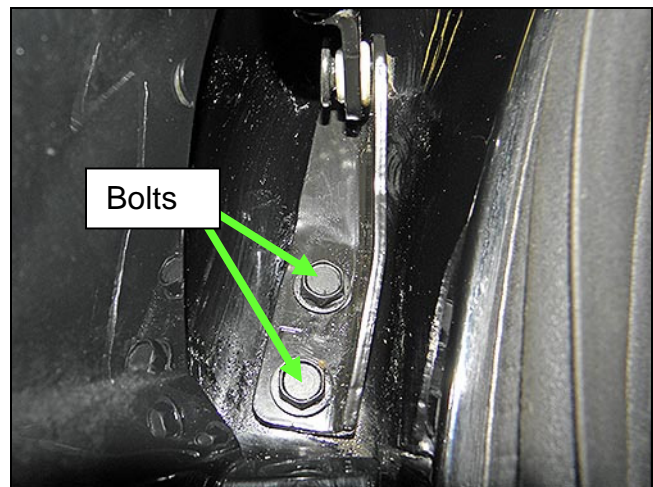


Figure 9

4. Install a new back door stay in the reverse order of removal.
5. Proceed to the opposite side rear door strut and perform steps 1-4.

PARTS INFORMATION

DESCRIPTION	PART #	QUANTITY
Lift Gate Stay Assembly-Kit (Includes both sides)	K0450-5BA0C	1

CLAIMS INFORMATION

Submit a Campaign (CM) line claim using the following claims coding:

CAMPAIGN ("CM") ID	DESCRIPTION	OP CODE	FRT
PC459	Replace Rear Door Struts	PC4591	0.4 hrs.

