

## Aluminum Utility Trailer Axle Attachment All Widths & Lengths

Vehicle: Hillsboro Aluminum Utility Trailer (All Model Designations beginning AU)

Manufactured Between: 11/06/2015 – 4/7/2016

Recalled for Axle Attachment

Description Axle mounting hardware was improperly positioned.

Consequences Improper position of axle mounting hardware could result in loosening of the axle resulting in loss of control.

Corrective Action:

1. Identify Improper axle hardware position. The zinc plated steel axle mount was incorrectly placed between the aluminum mount channel and the axle bracket. See Figure 1. The correct position for the steel axle mount is inside the aluminum mount channel with the axle attaching bolts inserted through the holes in the steel axle mount. See Figure 2.

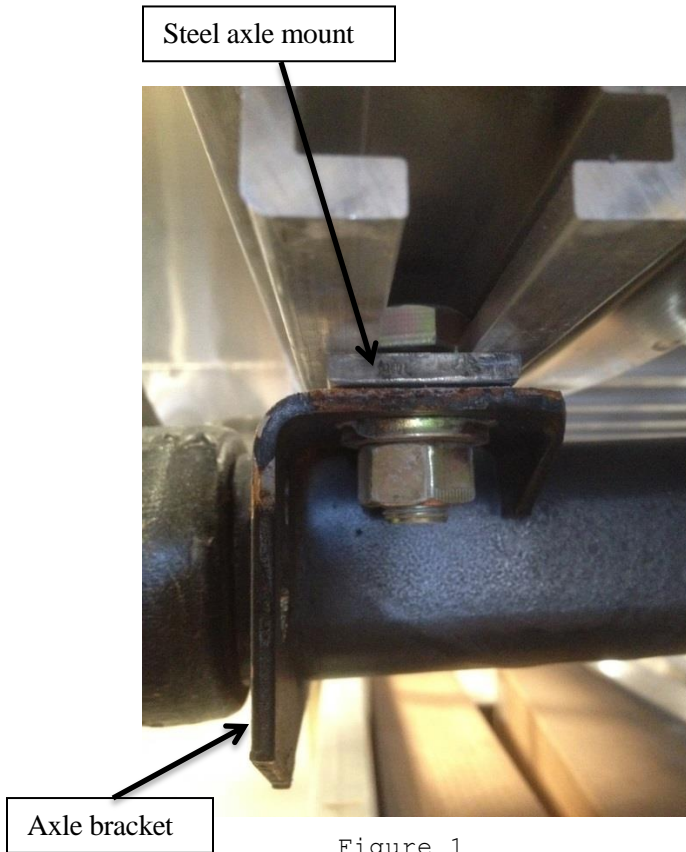


Figure 1  
**INCORRECT**

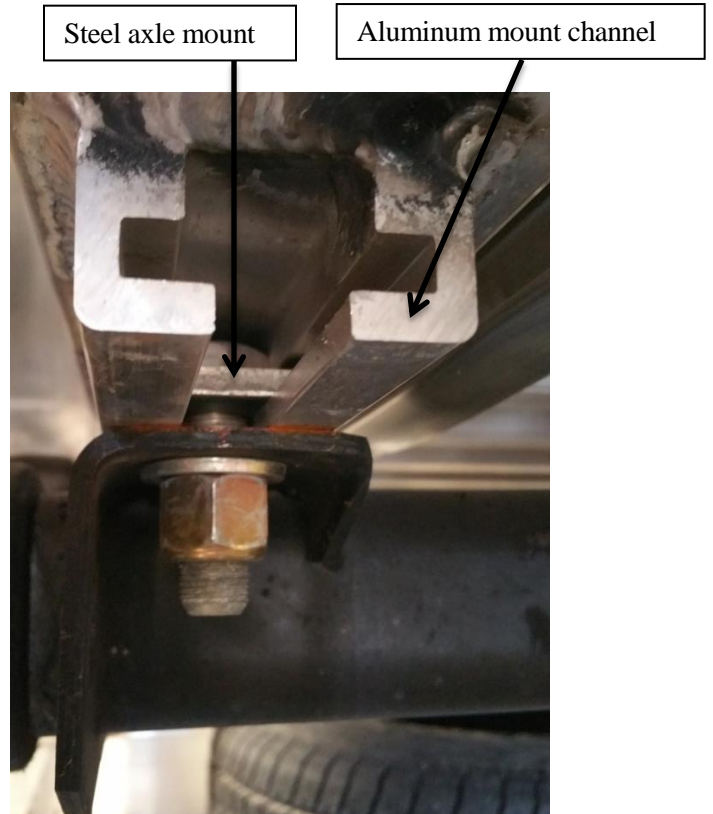


Figure 2  
**CORRECT**

2. Safely support the trailer and remove the wheels. Observe safe lifting and tool operating procedures.
3. Mark the forward edge of the axle bracket on the aluminum axle mount channel for reference alignment when re-attaching the axle. See Figure 3. Only loosen one end of the axle at a time. Place support under the end of the axle that is being loosened. See Figure 7. Use a 15/16" socket to loosen and remove the two nuts and flatwashers that attach the axle. See Figure 4 and 5. If required, use a screwdriver to wedge the bolt head to keep it from turning as shown in Figure 6.



Figure 3



Figure 4



Figure 5



Figure 6

4. Lower the end of the axle as shown in Figure 7. Remove both bolts from the aluminum mount channel by sliding them out the end of the channel. See Figure 8. If the bolts are lodged in the aluminum mount channel, place a flat steel bar in the end of the channel and tap with a hammer against the bolt.



Figure 7



Figure 8

5. Place the bolts through the steel axle mount as shown in Figure 9. Then slide the steel axle mount into the slot in the aluminum mount channel as shown in Figure 10 until the bolts are over the axle bracket holes. The bolt head flats must be aligned to slide in the aluminum mount channel.



Figure 9



Figure 10

6. Raise the end of the axle into place with the bolts in the axle holes, See Figure 11. Install the 5/8" flatwasher and nut. See Figure 12. The nut is a locknut and must be installed with the non-crimped end of the nut on the bolt first. **Torque 5/8" nuts to 120 ft-lb.** Repeat on other end of axle. Reinstall wheels and torque wheel nuts to 90 ft-lb.



Figure 11



Figure 12