

REFERENCE:	Nova Bus Manuals
SECTION:	12: Driver's seat Recaro
RS N°:	N/A
EFFECTIVE IN PROD.:	L931 (2015NO)
TC RECALL N°:	2016-144
NHTSA RECALL N°:	16V-191

APPLICATION DEADLINE: NA
CLAIM REFERENCE NUMBER: SR-3632

SUBJECT:	Recaro driver's seat
JUSTIFICATION:	Welds might be missing on right and/or left-hand seat belt anchor J-brackets.

LEVEL	DESCRIPTION	DIRECT CHARGES		TIME
		LABOUR	MATERIAL	
1	Inspect driver's seat J-brackets	Nova Bus	Nova Bus	5 min
2	If required change the defective J-brackets.	Nova Bus	Nova Bus	1,5 h

MATERIAL

QTY	PART N°	REV.	DESCRIPTION	REPLACES PART N°
LEVEL 1				
	-	-	-	-
LEVEL 2				
1	N8904737	-	Left hand kit	-
1	N8904738	-	Right hand kit	-

Materials will be available within 30 days. To order, please contact Prevost Parts by phone at 1-800-771-6682, by fax at 1-888-668-2555 or by email at prevostparts.commandes@volvo.com. Specify document number, quantity of parts required and shipping address.

DISPOSAL OF PARTS

REMOVED PARTS ARE:	DISCARDED	RETAINED *	* TO BE REIMBURSED, THE PARTS MUST BE RETAINED AND RETURNED IN ACCORDANCE WITH THE USUAL WARRANTY PROCEDURE.
	-	Yes	

REVISION HISTORY

REV.	DATE	CHANGE DESCRIPTION	WRITTEN BY
NR	2016JN27	Initial release	Luc Carignan
R1	2016AU05	Material list is revised. Diposal of parts changed to inform customer to retain and return defective parts.	Luc Carignan

CLIENT	ORDER	ROAD NUMBER		VIN (2NVY/4RKY...)		QTY
		FROM	TO	FROM	TO	
Belleville Transit - Ontario	L702	—	—	L82U4D3000706	L82U4D3000706	1
Chicago Transit Authority - CTA - Illinois	L773	—	—	L82JXD4500429	L82J6D4500430	2
Chicago Transit Authority - CTA - Illinois	L811	7902	7949	L82J6E4500509	L82J6E4500526	48
Chicago Transit Authority - CTA - Illinois	L837	7950	7999	L82J6E4500655	L82J1E4500708	50
Chicago Transit Authority - CTA - Illinois	L847	8000	8049	L82J1E4500773	L82JXE4500822	50
Chicago Transit Authority - CTA - Illinois	L848	8050	8099	L82JXF4500823	L82J1F4500872	50
Chicago Transit Authority - CTA - Illinois	L849	8100	8149	L82J5F4500874	L82J3F4500923	50
Chicago Transit Authority - CTA - Illinois	L850	8150	8199	L82J5F4500924	L82J6G9775013	50
CT Transit - Connecticut	L554	1041	1065	S92U1A4000139	S92U0A4000164	25
CT Transit - Connecticut	L571	1101	1110	S92YXB4000144	S92Y4B4000169	10
CT Transit - Connecticut	L814	1462	1473	S92LXE4500717	S92L4E4500728	12
CT Transit - Connecticut	L815	1426	1426	S92L0E4500709	S92L0E4500712	4
Houston - Texas	L737	1510	1510	S92U4D4500297	S92U4D4500297	1
Houston - Texas	L755	1511	1579	S92U4D4500333	S92U8D4500402	69
Kings Transit - Nova Scotia	L581	—	—	L82U2B3000054	L82U2B3000054	1
Kingston Ontario	L880	1502	1502	L82JXF3001786	L82JXF3001786	1
MTD - Santa Barbara, California	L730	—	—	S92J8E4500567	S92J1E4500569	3
San Joaquin County - California	L768	—	—	S92L4D4500422	S92L3D4500427	6
St. John - New Brunswick	L871	40585	40586	L82J8F3001592	L82JXF3001593	2

**WARNING**

Follow your internal safety procedures.

PROCEDURE

1.1. Perform the Recaro campaign procedure.

**NOTE**

The instructions included in this document have been provided by Recaro. Nova Bus cannot be held responsible under any circumstances for the content of this procedure. ❖

RECARO						
Work Instruction						
Operation #	SAP Line #	Operation Description	Level	Date	Author	
M0999507	N/A	Service Instruction Inspect and Repair J-brackets	05	Released	10/21/2015	Chris Perkins
	Page 1 / 8			Revised	10/30/2015	Chris Perkins

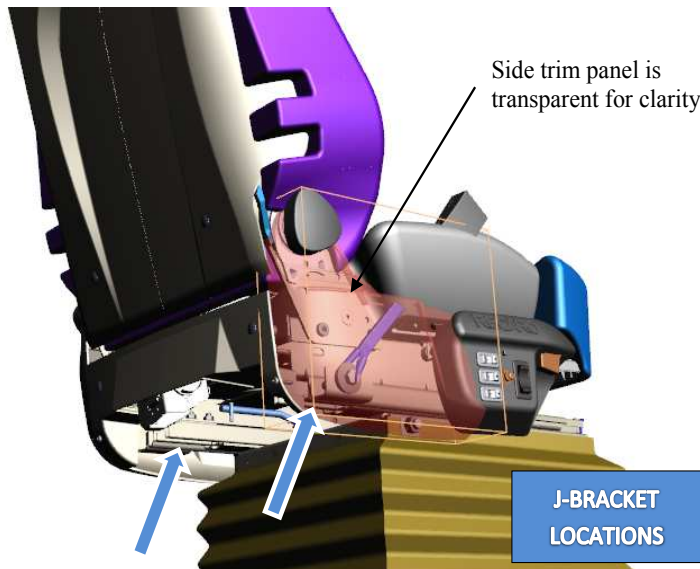
STEP	PICTURES / DESCRIPTIONS	Special Criteria
------	-------------------------	------------------

This procedure describes a 2 part process. Both inspection and repair, if necessary, are covered by this document.

SECTION 1 – INSPECTION

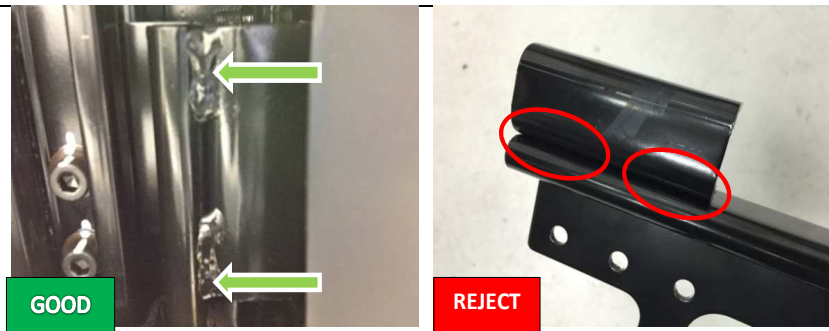


1. Position the seat to “full forward” and “full up” to obtain the serial number on the seat. The serial number decal is located on the back of the seat on the top of the suspension between the seat tracks, shown above. Record the bus number and serial number of the seat.



RECARO						
Work Instruction						
Operation #	SAP Line #	Operation Description	Level	Date	Author	
M0999507	N/A	Service Instruction Inspect and Repair J-brackets	05	Released	10/21/2015	Chris Perkins
	Page 2 / 8			Revised	10/30/2015	Chris Perkins

STEP	PICTURES / DESCRIPTIONS	Special Criteria
------	-------------------------	------------------



- Position the seat to best expose the underside of the J-brackets, “full up” and “full rear” would typically be best best location. Examine both J-brackets for presence of underside welds. Document condition of J-brackets.

If any of the welds are missing from the bottom of either J-Bracket, continue to section 2. If both welds are present and the parts are good, no further work is required.

SECTION 2 – REPLACEMENT

Parts List

- N8904737 Left hand kit 1 per seat (if required)
- N8904738 Right hand kit 1 per seat (if required)

Materials will be available within 30 days. To order, please contact Prevost Parts by phone at 1-800-771-6682, by fax at 1-888-668-2555 or by email at prevostparts.commandes@volvo.com. Specify document number, quantity of parts required and shipping address.

Tool List

- Impact or wrachet wrench with 5/8” socket and 6mm hex socket
- 13mm wrench
- Torque wrench(es) capable of 22 Nm and 50 Nm (6mm hex bit, 5/8” socket)
- Pick or small screwdriver (hole plug removal)
- #2 screwdriver
- 2 inch tall block

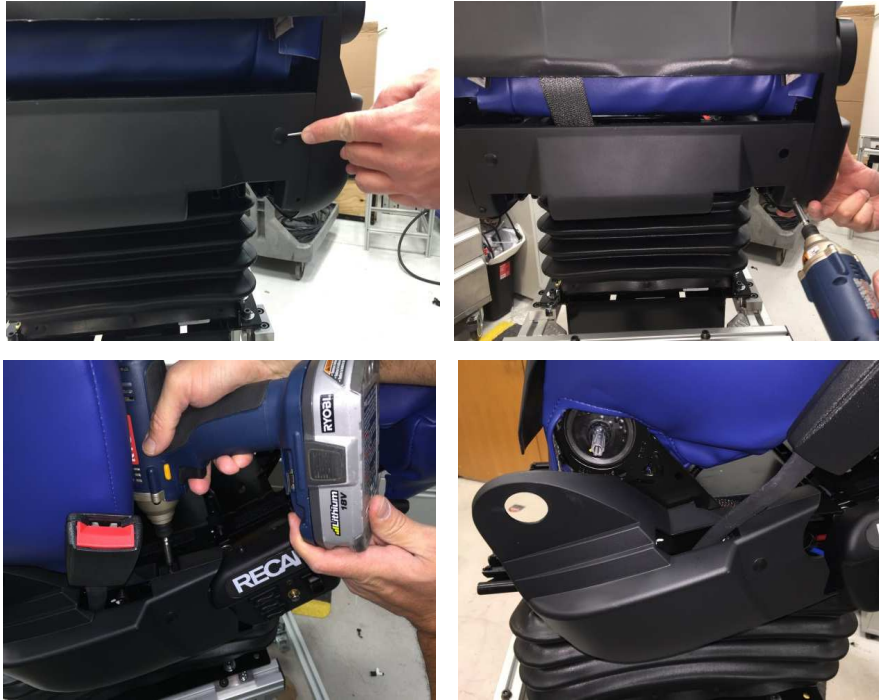
For technical support – Contact RECARO’s service technician, Zech Ellis at (248)484-3234

Once the parts have been received, follow the steps described here in Section 2.

RECARO Work Instruction						
Operation #	SAP Line #	Operation Description	Level	Date	Author	
M0999507	N/A	Service Instruction Inspect and Repair J-brackets	05	Released	10/21/2015	Chris Perkins
	Page 3 / 8			Revised	10/30/2015	Chris Perkins

STEP	PICTURES / DESCRIPTIONS	Special Criteria
------	-------------------------	------------------

Note: It is recommended that the seat is removed from the vehicle prior to replacing the J-bracket.



- If J-bracket(s) need to be replaced, remove the 2 hole plugs and 4 screws in the rear trim panel and the mounting screw from the rear corner panel(s). Remove the recliner handwheel.



RECARO						
Work Instruction						
Operation #	SAP Line #	Operation Description	Level	Date	Author	
M0999507	N/A	Service Instruction Inspect and Repair J-brackets	05	Released	10/21/2015	Chris Perkins
	Page 4 / 8			Revised	10/30/2015	Chris Perkins

STEP	PICTURES / DESCRIPTIONS	Special Criteria
------	-------------------------	------------------

- Remove the belt buckle (or belt retractor/3pt anchor) from the bad J-bracket with a 5/8 socket. Set the removed components aside.



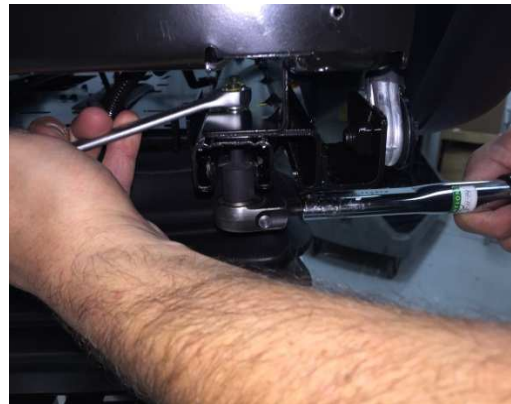
- Position the seat back to "full forward". Unfasten the front track bolt from the cushion frame using a 6mm hex bit and a 13mm wrench. Check the rear of seat for a track stop bolt. If present, remove it with the 6mm hex bit.



RECARO						
Work Instruction						
Operation #	SAP Line #	Operation Description	Level	Date	Author	
M0999507	N/A	Service Instruction Inspect and Repair J-brackets	05	Released	10/21/2015	Chris Perkins
	Page 5 / 8			Revised	10/30/2015	Chris Perkins

STEP	PICTURES / DESCRIPTIONS	Special Criteria
------	-------------------------	------------------

- Position the seat to “full rear”. Unfasten the rear track bolts from the cushion frame using an 6mm hex bit and a 13mm wrench. Place a 2 inch block between the cushion frame and suspension to create just enough clearance to remove the J-bracket by sliding it rearward along the path of the track.



- Position the replacement part utilizing the same path and aligning all the mounting holes. Obtain replacement M8 bolts. Place rear fasteners thru the mounting holes from below and start the flange nuts by hand. Torque to 22 Nm.



- Position the seat to “full forward”. Obtain replacement M8 bolts. Place front fastener thru the mounting holes from below and start, by hand, the flange nut. Torque to 22 Nm.
- If applicable, replace the track stop bolt previously removed.

F_04_01_07_251_WORK_INSTRUCTION.dotx
REVISION: 03
DATE: 1/13/2014

RECARO Work Instruction						
Operation #	SAP Line #	Operation Description	Level	Date	Author	
M0999507	N/A	Service Instruction Inspect and Repair J-brackets	05	Released	10/21/2015	Chris Perkins
	Page 6 / 8			Revised	10/30/2015	Chris Perkins

STEP	PICTURES / DESCRIPTIONS	Special Criteria
------	-------------------------	------------------



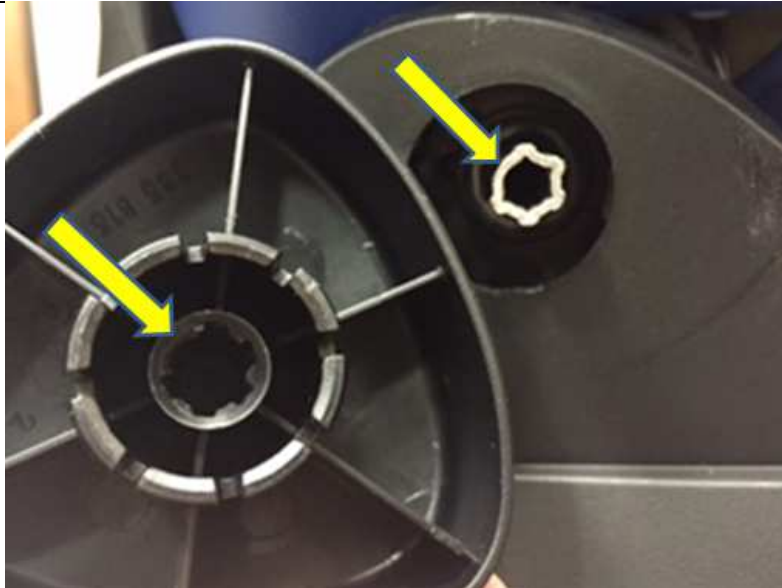
9. Route the buckle through the rear trim panel. Hand start the seat belt buckle bolt into the replacement J-Bracket part now in the seat. Torque to 50 Nm.
10. If needed, replace the other side J-bracket using the same procedure documented in steps 5-10.



11. Replace the corner panel(s) in original position and secure with the mounting screw(s) previously removed.

RECARO Work Instruction						
Operation #	SAP Line #	Operation Description	Level	Date	Author	
M0999507	N/A	Service Instruction Inspect and Repair J-brackets	05	Released	10/21/2015	Chris Perkins
	Page 7 / 8			Revised	10/30/2015	Chris Perkins

STEP	PICTURES / DESCRIPTIONS	Special Criteria
------	-------------------------	------------------



- Replace the recliner handwheel making sure to align the keyed pattern of the recliner rod to the handwheel.



- Position the rear trim panel into its original position and secure with the mounting screws previously removed. Install the hole plugs into the rear trim panel that were previously removed.

Note: Save all parts as RECARO requires them to be returned.

RECARO						
Work Instruction						
Operation #	SAP Line #	Operation Description	Level	Date	Author	
M0999507	N/A	Service Instruction Inspect and Repair J-brackets	05	Released	10/21/2015	Chris Perkins
	Page 8 / 8		Revised	10/30/2015	Chris Perkins	

STEP	PICTURES / DESCRIPTIONS	Special Criteria
REV LEVEL	REVISION LOG	
1.	Added document # and description provided by Adrienne Crowley	10/21/15
2.	Added part numbers.	10/22/15
3.	Added pictures of 3 pt retractor anchor, changed bolt quantity in kits to 3, and added block size.	10/23/15
4.	Added kit part numbers, 7225212.1 & 7225212.2	10/26/15
5.	Added picture to clarify J-bracket location on the seats and separated the inspection & repair.	10/30/15
6.		
7.		
8.		
9.		
10.		
11.		
12.		
13.		
14.		
15.		
16.		
17.		
18.		
19.		
20.		
21.		
22.		
23.		
24.		
25.		
26.		
27.		
28.		
29.		
30.		

SIGN OFF	
Manufacturing Engineer:	Date:
Quality Control:	Date:
Environmental Officer:	Date:
Health and Safety Officer:	Date:

CC[A] CC SC IC

F_04_01_07_251_WORK_INSTRUCTION.dotx
REVISION: 03
DATE: 1/13/2014