



Recall Campaign

NHTSA#: 16V158

Job Code: 9901291

Flate Rate: 2 hrs.

NO PARTS ORDER REQUIRED - AXLES SHIPPED DIRECT TO DEALERS

Action Required

Install 3500 lb. axles on Whitehawk travel trailer

DO NOT RETURN THE 3000LB AXLES TO JAYCO

Model / Serial Numbers

2016 White Hawk Travel Traile

G146 0269-0278

Shop Supplies / Tools

- 4 jackstands (minimum 6,000 lbs each)
- 13/16" open end box end wrench
- 11/16" deep well impact socket
- 3/4" deep well impact socket
- impact driver
- wire cutters
- wire strippers
- small sledge hammer
- 2 wire ties
- 4 Copper crimp connectors
- safety glasses
- floor jack

INSTRUCTIONS



FIG 1



FIG 2

- 1 **Fig 1:** Set the trailer up on jackstands on all four corners so wheels are just off the ground.

Fig 2: Use the 3/4" impact socket and remove the lugs from all four tires.
Remove all 4 wheels from the trailer.

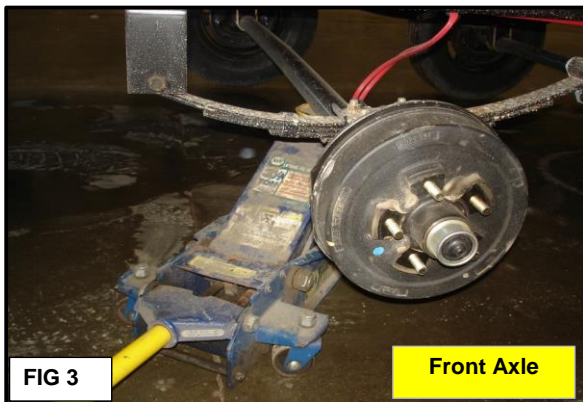


FIG 3

Front Axle

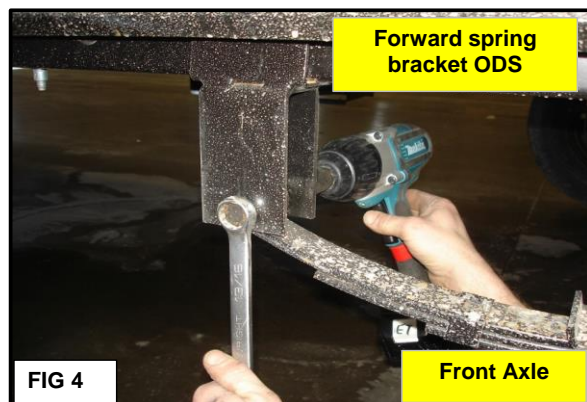
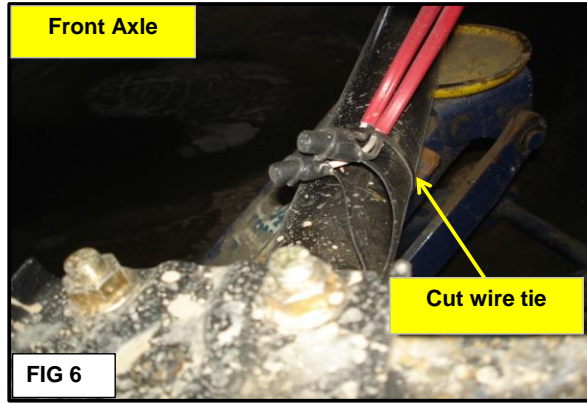
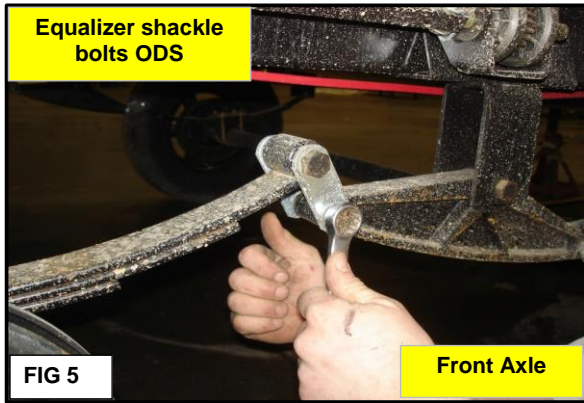


FIG 4

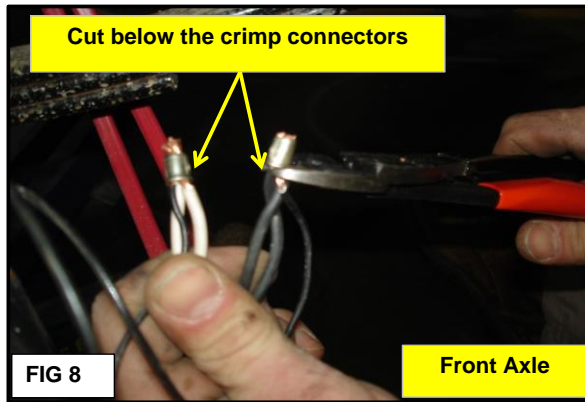
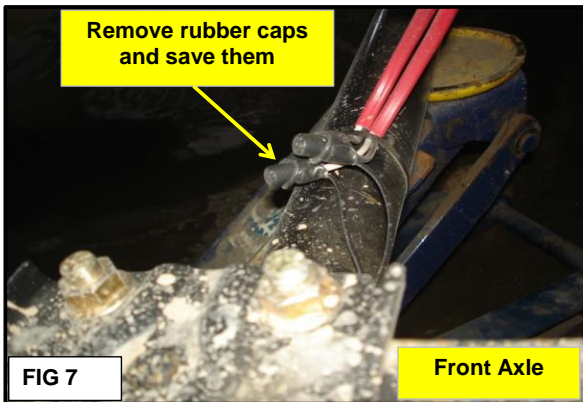
Front Axle

- 2 **Fig 3:** Place a floor jack under the front axle. (picture shows Off Door Side (ODS) of the trailer)

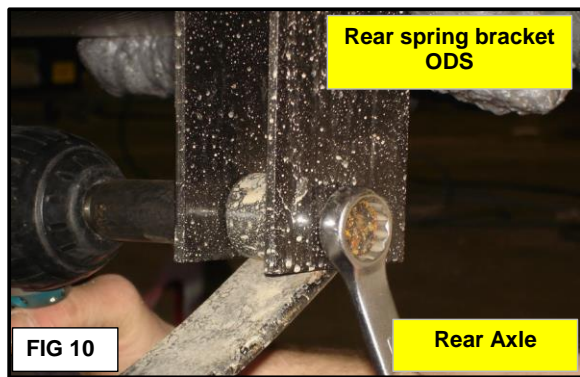
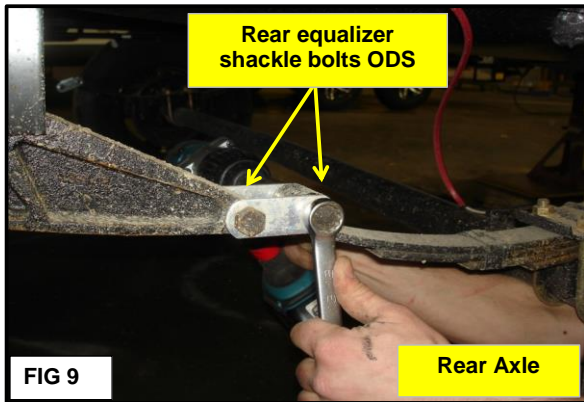
Fig 4: Remove the bolt from the spring hanger on the front axle, using the impact driver and the 11/16" impact socket and 13/16" wrench



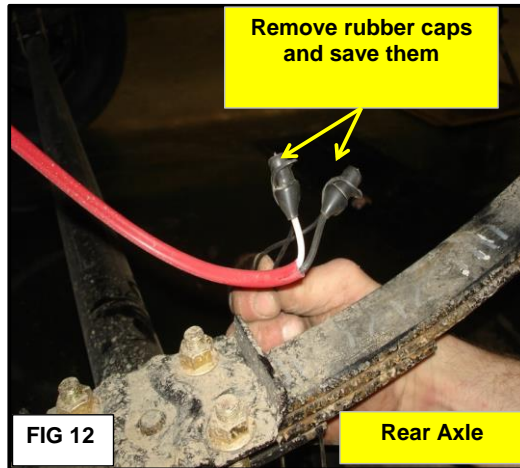
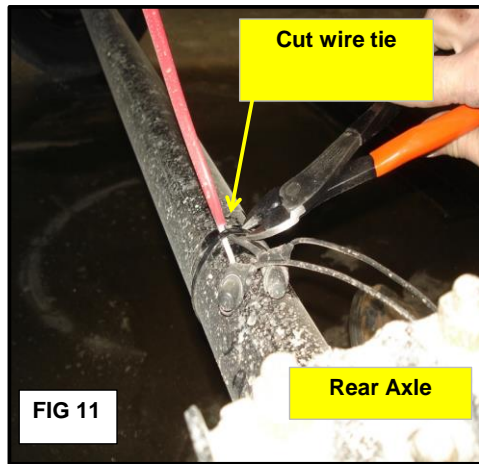
- 3 **Fig 5:** Remove both bolts from the equalizer shackle bracket.
Fig 6: Cut the wire tie holding the brake wires to the axle.



- 4 **Fig 7:** Remove the rubber caps on the crimp connections and save them for re-installation.
Fig 8: Cut the brake wire bundles(2 places) directly behind the copper crimp connectors as shown.
 On the Door Side of the trailer, remove the single bolt from the front spring bracket (**Fig 4**).
 Remove both bolts from the equalizer shackle bracket (**Fig 5**).
 The front axle is now loose and can be lowered to the floor.



- 4 Position the floor jack under the rear axle for support .
 Move to the Off Door Side again (with the brake wiring).
Fig 9: Remove both the rear equalizer shackle bolts .
Fig 10: Remove the rear spring bracket bolt .



5 **Fig 11:** Cut the wire tie holding the brake wiring to the rear axle.

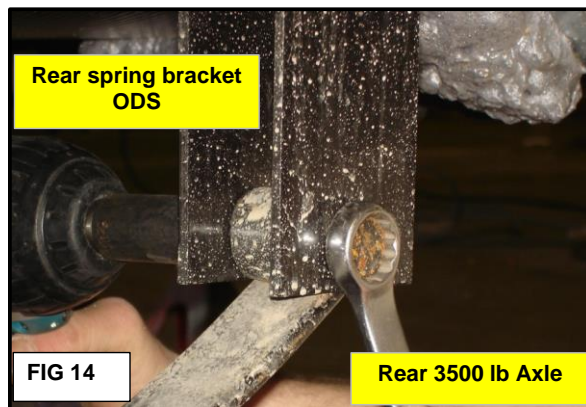
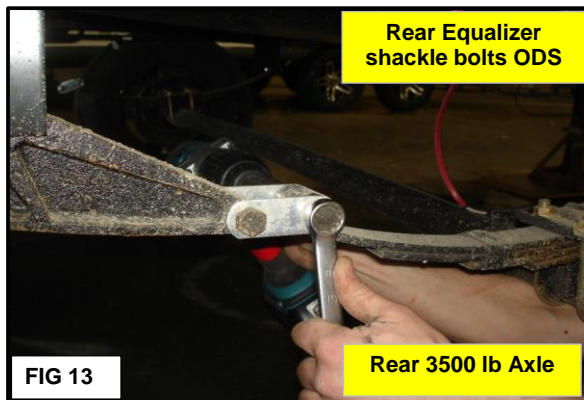
Fig 12: Remove the rubber caps from the wiring and save them for re-installation.

Cut the brake wiring behind the copper crimps as done previously (**Fig 8**).

Move back to the Door Side of the trailer.

Remove the other two equalizer shackle bolts for the rear axle, along with the other single spring bracket bolt.

Lower the rear axle to the floor.



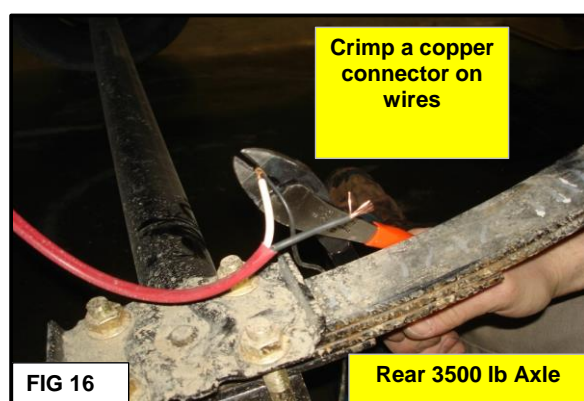
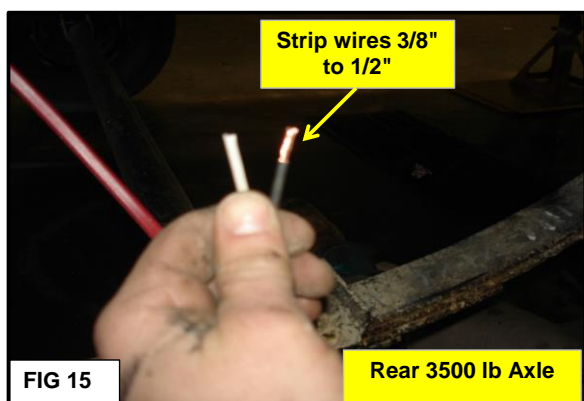
6 Put the replacement 3500 lb. axles in place under the trailer

Place the floor jack under the 3500 lb. rear axle and lift it into position.

Fig 13: Re-install the bolts in the equalizer shackle bracket on the ODS of the trailer.

Fig 14: Re-install the bolt in the rear spring bracket on the ODS of the trailer.

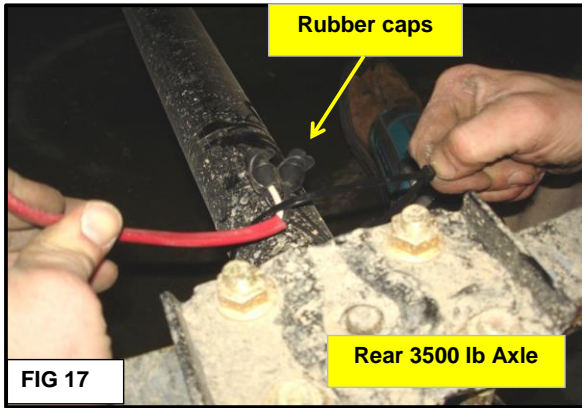
Repeat the procedure on the Door Side of the trailer for the rear axle.



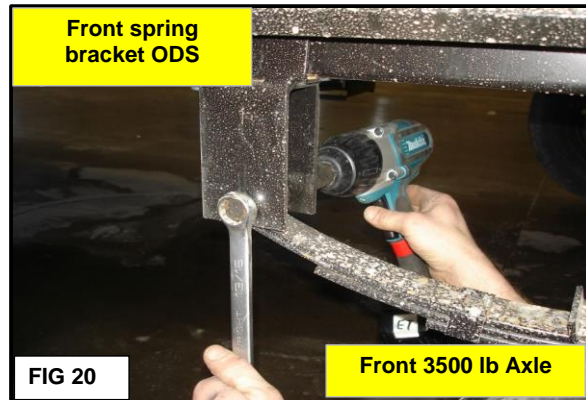
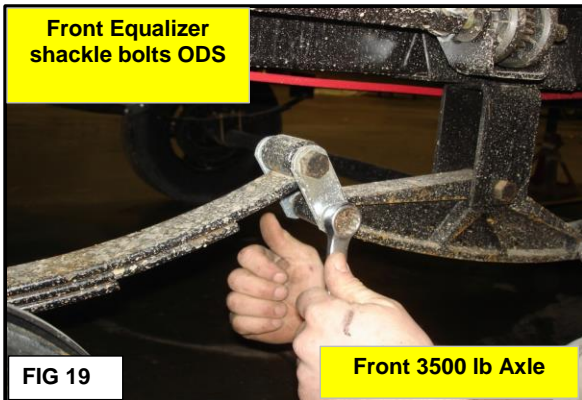
7 **Fig 15:** Strip the ends of the brake wires 3/8" to 1/2" (2 wires in the cable and 2 black brake wires)

Fig 16: Use a copper crimp, and insert the white wire and one of the black brake wires and crimp the connector.

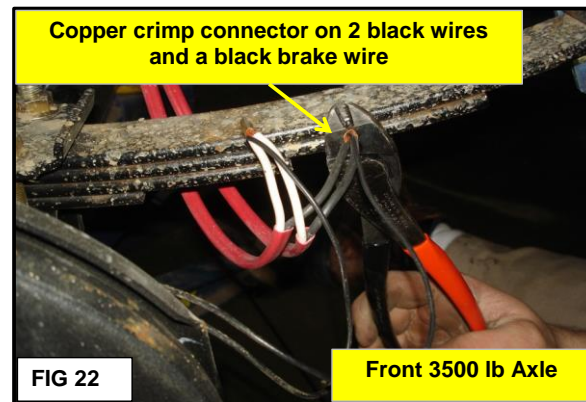
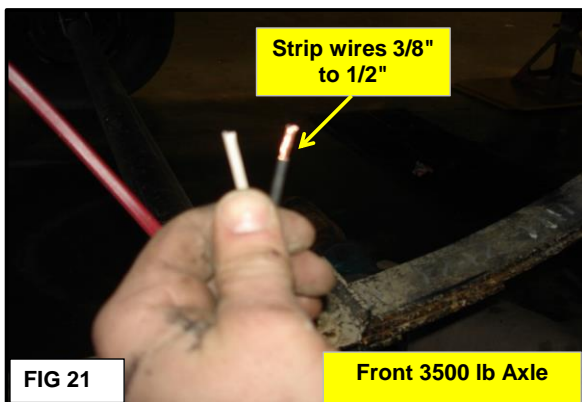
Use another copper crimp, and insert the black wire and the remaining black brake wire and crimp the connector.



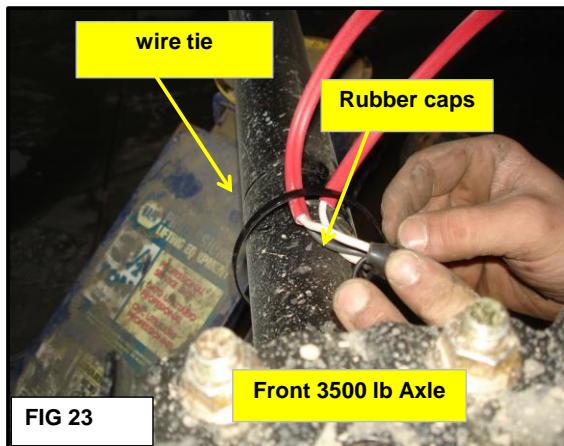
- 8 **Fig 17:** Put the rubber caps over the two crimps, and then tie the wires to the axle with a wire tie.
Tighten all 6 of the spring mounting bolts with the impact driver, the socket and the wrench.
Fig 18: You may have to tap the bolts with the small sledge to make sure the the bolts pull up tight to the spring brackets.
You may also have to do the same thing to the bolts in the equalizer shackles as well. Make sure nuts are on the bolts.
When tightening the bolts , confirm that two threads on the bolt protrude from the nut.



- 9 Place the floor jack under the 3500 lb. front axle and lift it into position.
Fig 19: Replace the equalizer shackle bolts on the ODS side of the trailer.
Fig 20: Replace the front spring bracket bolt on the ODS side of the trailer.
Repeat the procedure for the Door Side of the trailer.



- 10 **Fig 21:** Strip the wires 3/8" to 1/2" inch. (Two whites, two blacks and the two black brake wires)
Fig 22: Use a crimp connector and attach 2 whites and 1 black brake wire together.
Then use another crimp connector and attach 2 blacks and the other black brake wire together.



- 11 **Fig 23:** Place the rubber caps over the crimped connections and secure the wires to the axle with a wire tie. Tighten the bolts on the spring shackles and the spring brackets on both sides of the trailer on front axle.
- Fig 24:** Again you may have to tap the bolts with the small sledge to get them to pull up tight to the brackets and shackles. Make sure the nuts are attached to the bolts before striking them with the hammer.

TORQUE ALL THE MOUNTING BOLTS ON EQUALIZER SHACKLES AND SPRING BRACKETS TO 35 FT/LBS.

- 12 Re-install the wheels on the hubs using the 3/4" socket and impact. Remove the jackstands, and lower the trailer back on the ground.

TORQUE WHEEL LUGS TO 90 - 110 FT/LBS.