

TECHNICAL INSTRUCTIONS
FOR
SAFETY RECALL G0F
REAR OUTBOARD SEATBELTS PANEL INSTALLATION

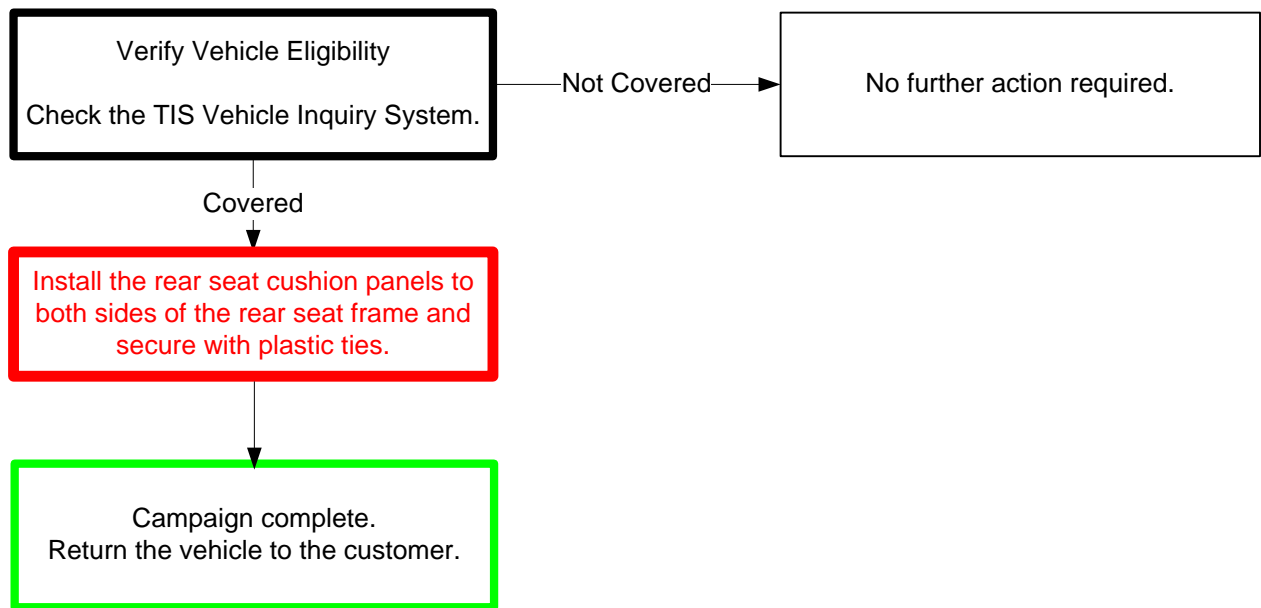
2006 – 2012 MODEL YEAR RAV4
2012 – 2014 MODEL YEAR RAV4

The repair quality of covered vehicles is extremely important to Toyota. All dealership technicians performing this repair are required to successfully complete the most current version of the E-Learning course "Safety Recall and Service Campaign Essentials". To ensure that all vehicles have the repair performed correctly; technicians performing this repair are required to currently hold at least one of the following certification levels:

- Certified Technician (any classification)
- Expert Technician (any classification)
- Master Technician
- Master Diagnostic Technician

It is the dealership's responsibility to select technicians with the above certification level or greater to perform this repair. Carefully review your resources, the technician skill level, and ability before assigning technicians to this repair. It is important to consider technician days off and vacation schedules to ensure there are properly trained technicians available to perform this repair at all times.

I. OPERATION FLOW CHART



II. IDENTIFICATION OF AFFECTED VEHICLES

A. COVERED VIN RANGE

- Check the TIS Vehicle Inquiry System to confirm the VIN is involved in this Safety Recall, and that the campaign has not already been completed prior to dealer shipment or by another dealer.
- TMS warranty will not reimburse dealers for repairs conducted on vehicles that are not affected or were completed by another dealer.

III. PREPARATION

A. PARTS

HARDWARE KIT:

Part Number	Part Description	Quantity
Locally Sourced	Plastic Tie (8" Black)	4
90468-16019 or 90468-18008	Hog Ring	2
04006-01142	Rear Seat Cushion Panel Kit	1
The kit listed above includes the following parts:		
Part Number	Part Description	Qty
71211-42010	Rear Seat Cushion Panel RH	1
71212-42010	Rear Seat Cushion Panel RH	1

B. TOOLS & EQUIPMENT

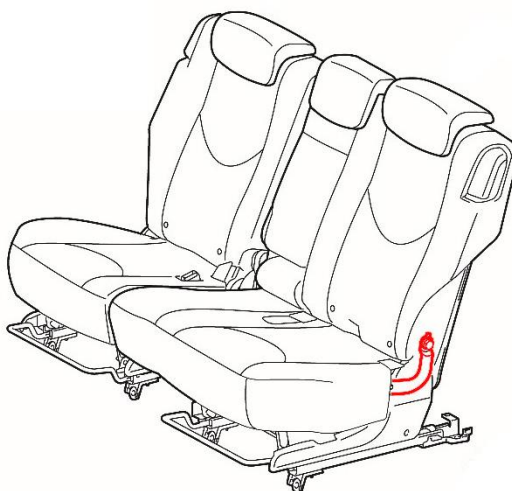
- Standard Hand Tools
- Hog Ring Pliers

C. MATERIALS

- Work Gloves
- Protective Glasses

IV. BACKGROUND

The subject vehicles are equipped with lap-shoulder seatbelts in both second-row outboard seats. There is a possibility that, in the event of a very severe frontal crash, the lap belt webbing could contact a portion of the metal seat cushion frame, become cut, and separate. If this occurs, the seat belt may not properly restrain the occupant, which could increase the risk of injury.



V. REAR SEAT PANEL CUSHION INSTALLATION

A. COMPONENTS

REAR SEAT CUSHION HINGE
COVER NO.1

■ REAR SEAT CUSHION
PANEL RH

PLASTIC TIES

■ : Additional Parts

REAR NO.1 SEAT ASSEMBLY RH

REAR NO.1 SEAT ASSEMBLY LH

REAR SEAT CUSHION HINGE
COVER LOWER LH

■ REAR SEAT CUSHION
PANEL LH

K1500390002a

B. REAR SEAT DISASSEMBLY

1. REPOSITION THE REAR SEATS

- Slide both LH and RH rear seats to the most forward position.
- Adjust the LH and RH seat recline position to the vertical position.

2. REMOVE THE REAR SEAT HINGE COVERS

- Disengage the 2 claws (A) located next to the bottom seat cushion.
- Carefully disengage the 2 claws (B) securing the cover to the seat back portion of the frame.
- Carefully slide the hinge cover up to disengage the cover from the guide (C) on the seat frame.
- Repeat on opposite seat.

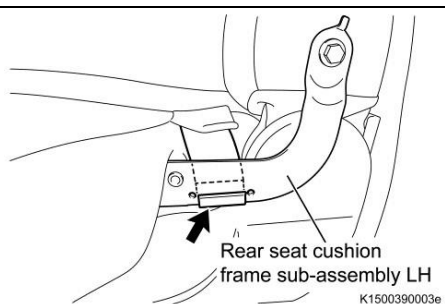
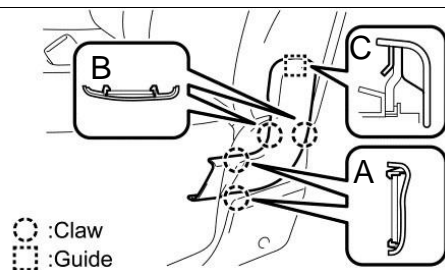
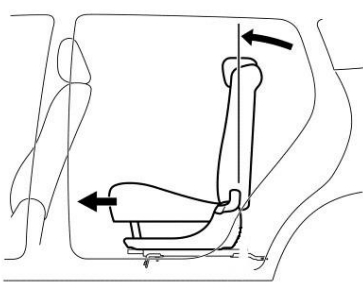
3. DISENGAGE REAR SEAT NO. 1 CUSHION COVER CLAW

- Disengage the rear seat no.1 cushion cover claw on LH and RH seats.

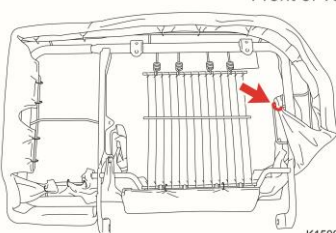
4. REMOVE THE HOG RINGS

- Remove the hog ring at the base of the seat securing the rear seat cushion seat cover to the seat frame.
- Repeat procedure on opposite side.

Note: The image is of the underside of the seat assembly.



View of underside of LH seat:
Front of vehicle

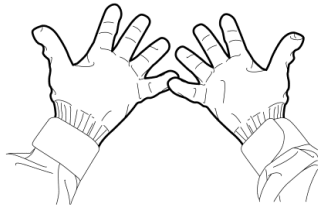


C. REAR SEAT CUSHION PANEL INSTALLATION

PRIMARY INSTALLATION METHOD: SLIDE METHOD



Due to variations in seat frames from production there are two installation methods for installing the panel. Both methods instructions are in the following pages, however the slide method is the preferred method for installing to ensure consistent fitment.

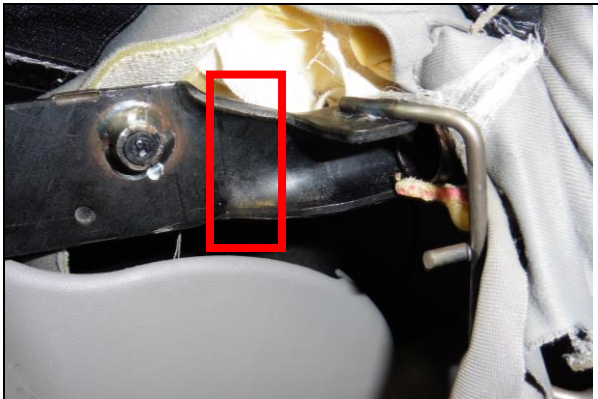


WEAR PROTECTIVE GLOVES

K1500260047e



Wear protective gloves when installing the panel, the seat frame edges are sharp and can cause injuries.



1. INSTALL PANEL USING SLIDE METHOD

- Gently pull back the seat foam to expose the rear seat frame.
- Locate the narrow portion of the seat frame rail (red box area).

[Slide Method Installation Video](#)

- Place the rear portion of the panel so that the rear upper and lower claw can straddle the seat frame.
- Gently slide back the panel so that the rear claws slide over the seat frame, until the panel contacts the welded rod of the seat frame as shown below.

Note: An audible clicking sound will be heard when properly seated.



- Engage the front tab with the vertical wire of the seat frame as shown.
- Repeat installation on opposite side.



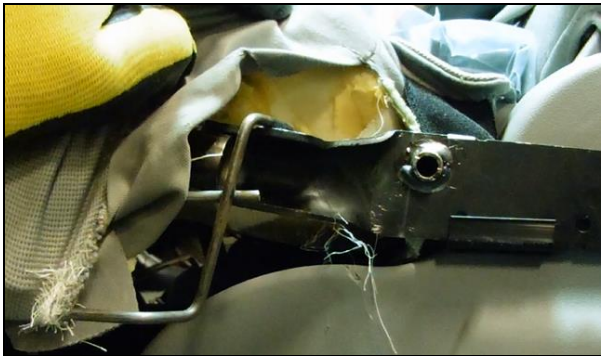
Do not use force when attempting to engage the tab. On some vehicles the vertical wire may be too far back to engage the tab. If this is the case carefully slide off the panel and install using the secondary install method on the next page.

- Go to section V.D (Page 7) to secure the panel with plastic ties.

SECONDARY INSTALLATION METHOD: SCREWDRIVER INSTALLATION



The secondary method should **ONLY** be used when the slide method is unable to be performed. Use extreme caution when using this method because it is easy to damage the panel retention claws using this method.



1. INSTALL PANEL USING SCREWDRIVER

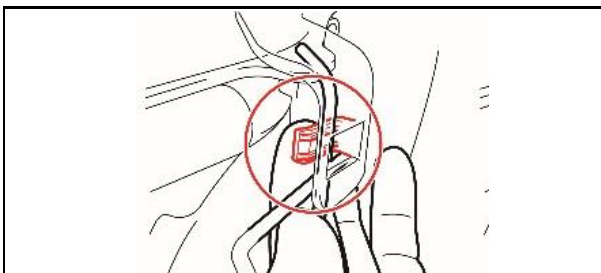
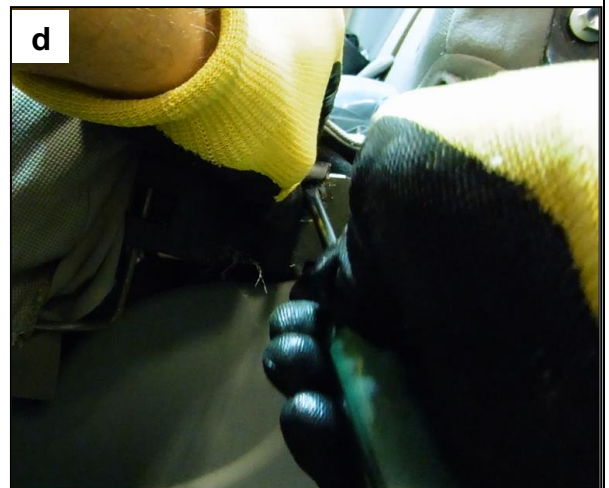
- a) Gently pull back the seat foam to expose the rear seat frame.

[Screwdriver Method Installation Video](#)



- b) Engage the front tab with vertical wire of the seat frame as shown.

- c) Gently angle the rear side of the panel down so that the lower rear claw can slide underneath the seat frame.
- d) Using a screw driver gently pry up on the welded rod on the seat frame so that the upper claw clears the seat frame and engages.



- e) Confirm that the front tab (A) is still engaged on the vertical wire and did not slip off during the rear claw installation.
- f) Confirm that both of the rear panel claws are engaged.
- g) **Go to section V.D (Page 7) to secure the panel with plastic ties.**

D. SECURE SEAT CUSHION PANELS

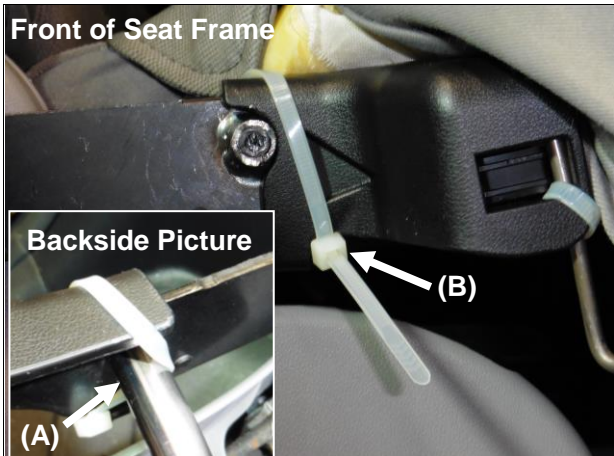
[Panel Securement Supplemental Video](#)



1. SECURE THE FRONT TAB TO SEAT FRAME WIRE

- Using a plastic tie secure the panel to the seat frame wire as shown.
- Cut the excess plastic tie material.
- Ensure that the plastic tie locking mechanism is not exposed.

Note: Use black plastic ties, white plastic ties were used for photo purposes only.



2. SECURE THE REAR CLAWS

- Wrap the plastic tie around the seat frame and rear portion of the panel as shown.
- Ensure the plastic tie is wrapped around the seat frame reinforcement rod (A) and seats against the curve (B) at the lower portion of the panel as shown.



The plastic tie must be properly routed as shown with the plastic strap going over the top of the seat panel to ensure it stays secured properly and does not interfere with the seat frame hinge cover retention claws.

- Using pliers pull the plastic tie tight.
- Confirm that the plastic tie is tight.
- Cut the excess plastic tie material.

Note: Use black plastic ties, white plastic ties were used for photo purposes only.



- Using a screwdriver rotate the plastic tie locking mechanism so that it is not exposed.



The locking mechanism must be pushed to the rear side of the seat frame to ensure no sharp edges are exposed.

- Repeat securement procedure on opposite side.


Note: Use black plastic ties, white plastic ties were used for photo purposes only.

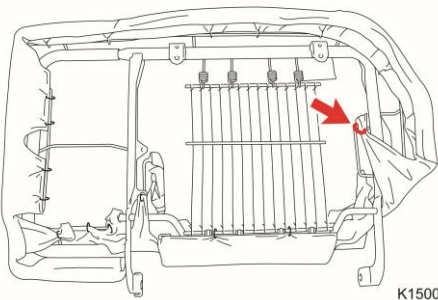


E. REASSEMBLE REAR SEAT



1. REPOSITION SEAT CUSHION FOAM

View of underside of LH seat:  Front of vehicle

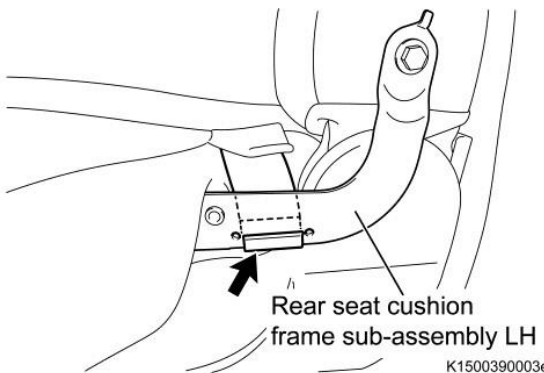


K1500390005a

2. INSTALL SEAT COVER

a) Reinstall the seat cover material with a **NEW** hog ring to the LH and RH seat frame assembly as shown.

b) Reinstall the rear seat no. 1 cushion cover claw on the seat frame for both the LH and RH seat.

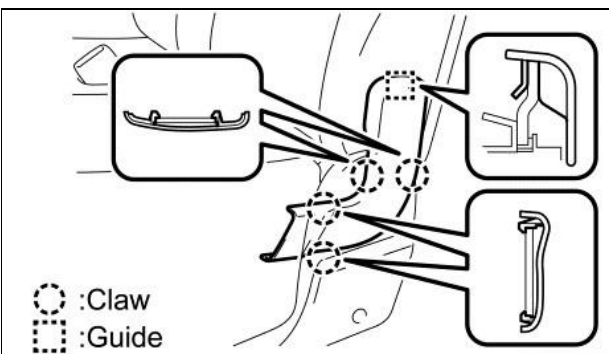


K1500390003e

3. REINSTALL REAR SEAT HINGE COVER

- Insert guide into the rear seat hinge cover.
- Engage the 4 claws of the rear seat hinge cover onto the seat frame.
- Repeat for opposite side.

Note: The plastic tie will not interfere with the seat hinge cover and will not be visible after the hinge cover is installed.



4. RETURN REAR SEAT TO ORIGINAL POSITION

◀ VERIFY REPAIR QUALITY ▶

- Confirm that both the left and right seat panels have been installed
- Confirm that both the left and right seat panels have been properly secured using the plastic ties
- Confirm the plastic tie locking mechanism are not exposed
- Confirm the seat cushion and seat cover have been reinstalled
- Confirm there is no dirt and debris on the seat cover or plastic covers

If you have any questions regarding this **Safety Recall**, please contact your regional representative.

VI. APPENDIX

A. CAMPAIGN PARTS DISPOSAL

Make sure all campaign parts (original parts) removed from the vehicle are disposed of in a manner in which they will not be reused, ***unless requested for parts recovery return.***

B. CAMPAIGN DESIGNATION DECODER

