



Recall Campaign

NHTSA# 16V-058
Job Code 9904277

TC# 2016-056
Flate Rate .5 hr

Date of Publication February 2016

REQUIRES PARTS ORDER

Action Required

Replace safety chains and elbow on A frame.

Model / Serial Numbers

Please refer to enclosed listing.

Part Kit 16V058

Parts kit can only be ordered using the RECALL order form.

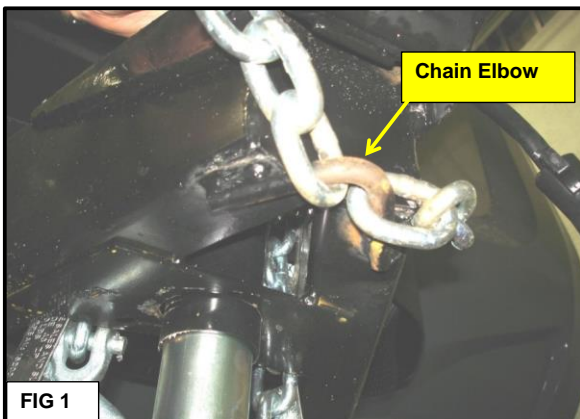
- 2 Safety chain w/hook 3/8" x 16,200 lbs 27 inches
- 2 Chain elbows 3" x 3" x 7/16" dia.
(some units have 1 elbow, some have 2)

Tools / Material Req.

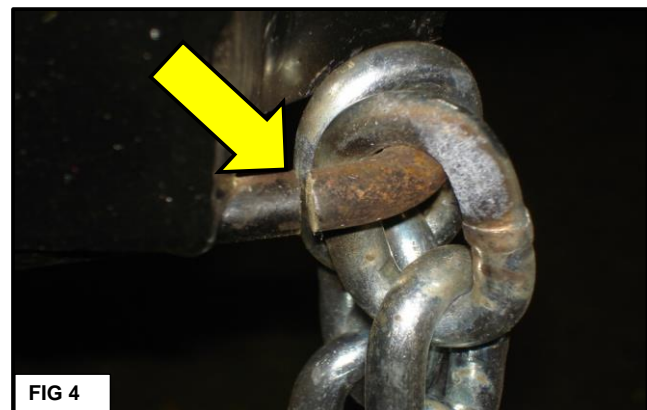
- 4-1/2" grinder with cutoff wheels
- Welder
- Welding gloves & helmet
- Safety glasses



WELDING MUST BE PERFORMED BY A CERTIFIED WELDER.



- 1 **Fig 1:** Locate the safety chains and the chain elbow(s) under the hitch coupler.
Fig 2: Hang the chains straight down from the elbow(s).



- 2 **WARNING: Wear safety glasses and gloves to prevent injury from flying debris.**
Fig 3: Use the grinder with cutoff wheel and cut the chain elbow(s) on one side, **KEEP CHAINS AWAY FROM AREA YOU ARE CUTTING**. The cutoff wheel makes a much cleaner cut and does not require any cleanup in preparation to weld on new chain elbow(s).
Fig 4: Chain elbow cut
Cut the other side of the chain elbow in the same manner. **KEEP CHAINS AWAY FROM AREA YOU ARE CUTTING.**



FIG 5

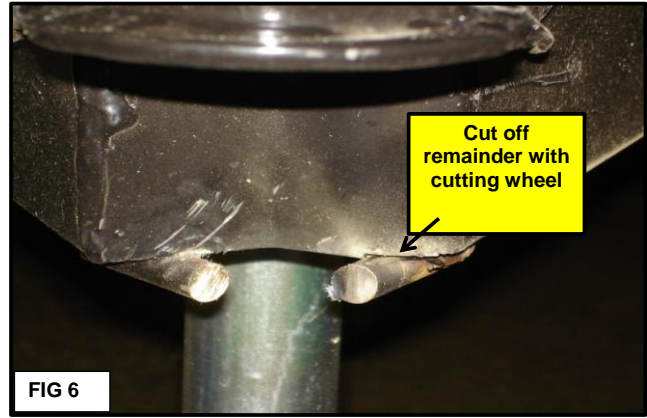


FIG 6

- 3 **Fig 5:** Shows the chain elbow cut in two.
Fig 6: Use the cutoff wheel to cut off the remaining pieces of the chain elbow.



FIG 7



FIG 8

- 4 **Fig 7:** Hook the new chains on top of the A-Frame. Insert the new chain elbow(s) through the new two chains .
Fig 8: Hold the chain elbow(s) up under the hitch where the old one was located.
 Make sure the elbow is positioned out far enough to ensure the chains can move freely on it
 Move the chains over to one side away from welding area.



FIG 9

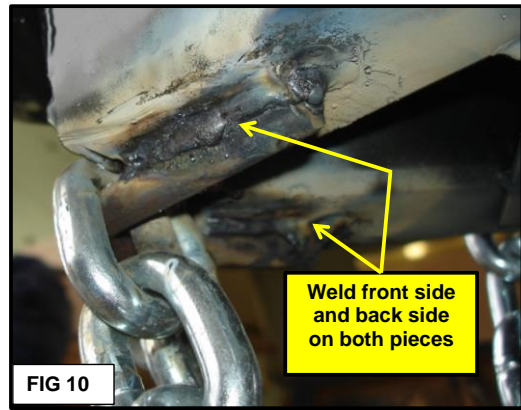


FIG 10

- Fig 9:** Weld both **ends** of each chain elbow to A-Frame. Weld the outside and the inside on each end of the chain elbow to A-Frame.
Fig 10: Front and back sides of each end of the chain elbow(s) should be welded to the A Frame.



Fig 11: Let welds cool then paint it black with a good quality spray paint (like Rustoleum)
Chains should move freely on the chain elbow(s).