



REPAIR DOCUMENT

Ag Hopper Trailer – Hopper Side Slope Panel to Lower Rail Connection – Recall Remedy

Repair Document #: **RD-00056**

Date: March 1, 2016

Reference Recall No.:

US NHTSA Recall No. 16V050

Contact Information:

If you have any questions about this Repair Document please contact the Stoughton Trailers Customer Service Department by telephone (608)-873-2555 or by email (warranty@stoughtontrailers.com).

Subject:

Recommended upgrade for Ag Hopper trailers hopper side slope panels that are found to have less than desirable edge distance at the lower rail and cross member connections. The reinforcement upgrade on Model Years 2009, 2010 STOUGHTON Ag Hopper trailers will eliminate the possibility of losing that connection over the useful life of the trailer.

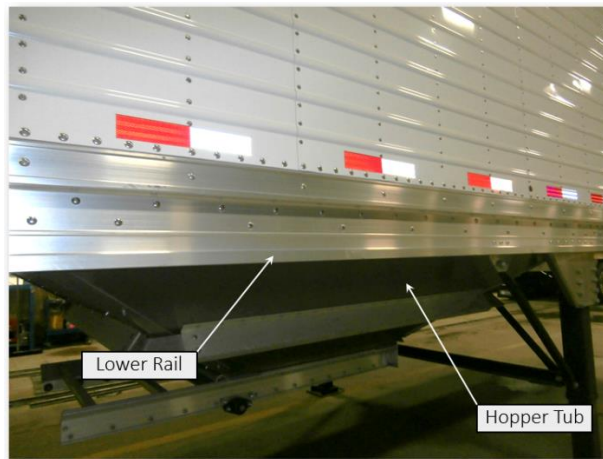
Models:

Trailers that qualify for this reinforcement upgrade can be identified by the following:

1. Model: AHV
2. Model Years: 2009,2010
 - a. VIN Model Year Date Codes of 9 & A
3. Date of Manufacture: December 2007 thru December 2009.
4. Reference Appendix A for a complete list of units covered.
5. Order numbers covered are within the range of 20789 to 22151.

Inspection Procedure:

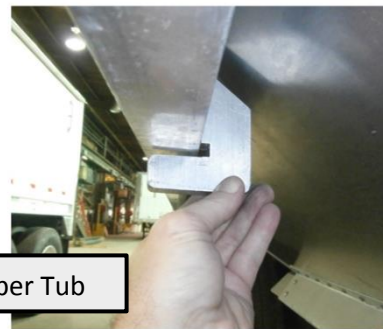
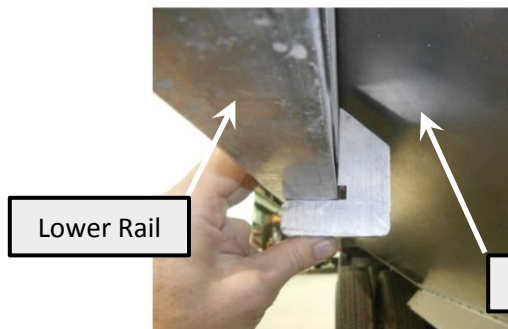
- The inspection will consist of placing a template on the bottom of the lower rail of the trailer and against the side of the hopper tub.
- This inspection should be done on the roadside and curbside of both the front and rear hopper tubs. The inspection should cover at least 3 points along the length of each side.
- The template will check the distance the hopper tub is installed from the bottom of the lower rail.
- If the template hits the bottom of the lower rail prior to hitting the hopper tub then the tub is located in the proper position.
- If the template hits the hopper tub prior to hitting the bottom of the lower rail then the tub is not located in the desired position.



Inspection Procedure

Condition #1 - Desired Result

Condition #2 - Un-Desired Result



Above figure shows the template up tight against the bottom of the lower rail prior to hitting the hopper tub.

Above figure shows the template up against the bottom of the hopper tub prior to hitting the bottom of the lower rail.

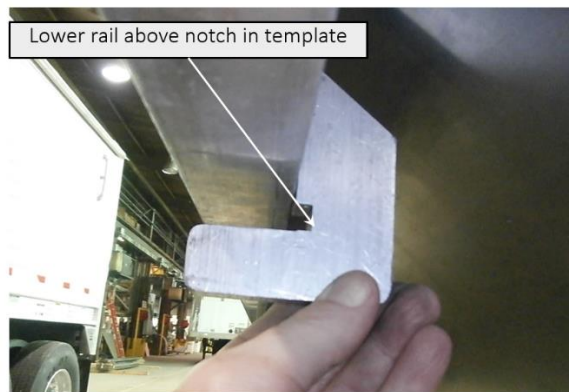
Any trailer that fits condition #2 of the Hopper Side Slope Panel to Lower Rail fit inspection must have additional fasteners added per the procedure described below.

The repairs and upgrades must be performed by a Stoughton Trailer Ag Hopper dealer or an authorized repair shop.

If condition #3 is found on any trailer during the Hopper Side Slope Panel to Lower Rail fit inspection, please contact Stoughton Trailers Customer Service for further instructions

Telephone (608)-873-2555 or email (warranty@stoughtontrailers.com).

Condition #3



Above figure shows the template up against the bottom of the hopper tub and the lower rail above the notch in the template. If this condition is found, PLEASE CONTACT STOUGHTON TRAILERS CUSTOMER SERVICE for further instructions.

Warning:

During all steps of the inspection and remedy procedures one must use appropriate safety precautions.

- Use personal safety equipment when working on any trailer (i.e. safety glasses, hearing protection, safety shoes, etc.).
- Trailer must be supported at all times to prevent movement throughout the upgrade process.
 - Check to insure landing gear is in proper working order and providing proper support prior to upgrade.
- The trailer must be empty before any repairs or upgrades are made.

Parts Required:

<u>Part Number</u>	<u>Description</u>	<u>Quantity</u>
04-97103	Pin, Huckbolt, ¼ inch	14
04-97116	Collar, Huckbolt, ¼ inch	14
04-98003-812	Rivet, Brazier Head, ¼ x 13/16	60

Tools

- Drill
- Grinder
- Rivet Gun
- Bucking bar
- Huck installation tool

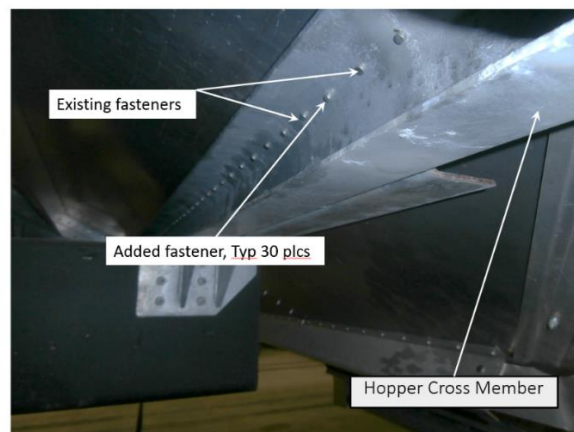
Procedure:

1. If the hopper tub has been found to be in the undesired position after inspection (Condition #2), then it is necessary to add some fasteners to insure the integrity of the hopper tub connection.
 - a. Fasteners are to be added along the lower rail of the trailer.



- b. Fasteners will also be added along the front and rear cross members supporting the tub.

Add fasteners between each fastener along the hopper cross members, (30) ¼ Solid Rivets



Appendix A.

Part Drawings

