



www.smeal.com / **HEADQUARTERS:** 610 W 4th St. - P.O. Box 8 Snyder, NE 68664 / PH: (402) 568-2224 FX: (402) 568-2346
 www.ustanker.com / **PLANT:** 1827 Hobbs Dr. Delavan, WI 53115 / PH: (262) 763-6220 FX: (262) 725-7000
 www.laddertower.com / **PLANT:** 68 Cocalico Creek Rd Ephrata, PA 17522 / PH: (717) 859-5472 FX: (717) 859-3517

Date: January 19, 2017

AAA FirePro Inc. of NM
 P.O. Box 118
 Clovis, NM 88101

Kendal Kohler:

This notice is sent to you in accordance with the National Traffic and Motor Vehicle Safety Act. Smeal Fire Apparatus Company has decided that a safety related defect may exist in certain Smeal Rear Mount Aerial Platform Fire Apparatus have a defect that relates to motor vehicle safety. These vehicles were built between January 1, 1997 and November 30, 2016.

You are receiving this letter because our manufacturing records indicate the following Chassis VIN number/numbers are affected by the National Traffic and Motor Vehicle Safety Act recall # 16V-887.

<u>SO#</u>	<u>VIN #</u>	<u>Customer</u>
3410		Hobbs Fire Department 301 East White Hobbs, NM 88240

<u>SO#</u>	<u>VIN #</u>	<u>Customer</u>
4217		Portales Fire Department 100 E. 1 st Portales, NM 88130

Please contact the Fire Departments listed above to schedule a service appointment with them to have the Smeal Smeal Mansaver Safety Brace Kit installed. Each Smeal Mansaver Safety Brace Kit will be individually packaged and will include detailed installation instructions and Certificate of Remedy (see attached). It will take approximately one half hour of service time to perform the remedy.

IMPORTANT

1. Contact the owner/owners list above to make a service appointment to have the Smeal Smeal Mansaver Safety Brace installed.
2. Order the Smeal Smeal Mansaver Safety Brace PN 740332 through the Smeal Parts Department.
3. COMPLETE AND SUBMIT THE SMEAL "CERTIFICATE OF REMEDY" FORM AND INVOICE TO service @ smeal.com.
4. INSTALLATION INSTRUCTIONS and a CERTIFICATE OF REMEDY FORM are also attached to this letter. The CERTIFICATE OF REMEDY MUST BE FILLED OUT AND RETURNED TO SMEAL SFA LLC along with an invoice. Upon receipt of each completed certificate, and invoice, Smeal will credit your account for \$250.00 as follows:

2 hours travel time @ \$100/hour	\$200
1/2 hour repair time @ \$100/hour	\$50
Total	\$250

IMPORTANT: Some vehicles may still be in dealer inventory. Federal law requires you to complete the recall remedy on such vehicles before delivery to the retail customer.

If your customer has already performed this remedy, your customer may be eligible to receive reimbursement for the cost of performing the remedy which is the subject of this recall.

If you believe there is a failure to remedy this defect without charge and within a reasonable time, you may submit a written complaint to the Administrator, National Highway Traffic Safety Administration, 1200 New Jersey Avenue, SE, Washington, D.C. 20590; or call the toll-free Vehicle Safety Hotline at 1-888-327-4236 (TTY: 1-800-424-9153); or go to <http://www.safercar.gov>.

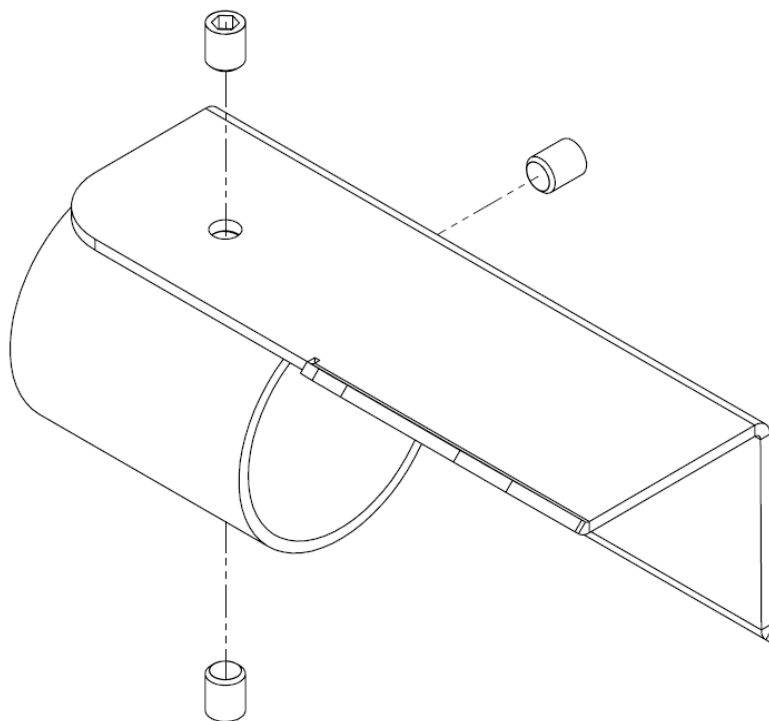
We apologize for any inconvenience this safety recall may cause, but customer safety is our first concern.

Sincerely,

A handwritten signature in cursive script that reads "John Rasmus".

John Rasmus
Director of Customer Service
Smeal Fire Apparatus Co.
Office: 402-218-1541
Email: john@smeal.com

Mansaver Safety Brace Installation Instructions NHTSA Recall 16V887



Part Number 7403322

QTY	DWG#	PART#	DESCRIPTION
3	FA-12148	FA-12148	SCREW, 5/16-18X3/8 ALLEN SET LOCTITE
1	A-PTMS-0000-A04	740-3322	MANSAVER BAR BRACE

The mansaver brace consists of a LINE-X coated brace and installation hardware, as shown above.

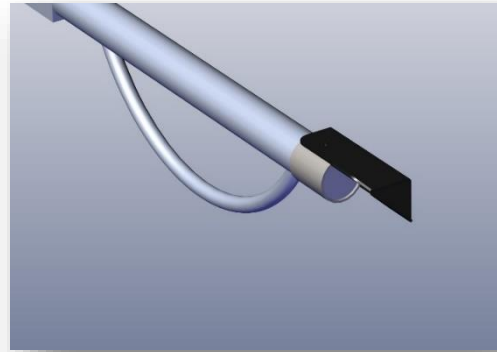
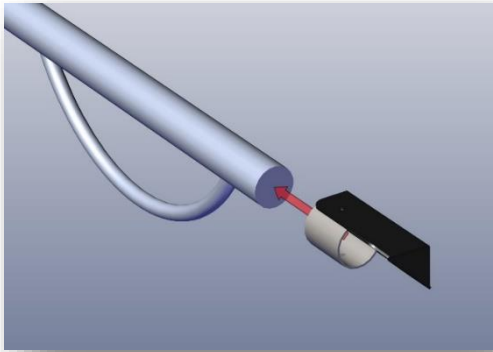
The mansaver brace is to be placed over the end of the existing mansaver bar and secured with 3 set screws, allowing the end of the brace to rest on the existing adjacent platform wall.

Index:

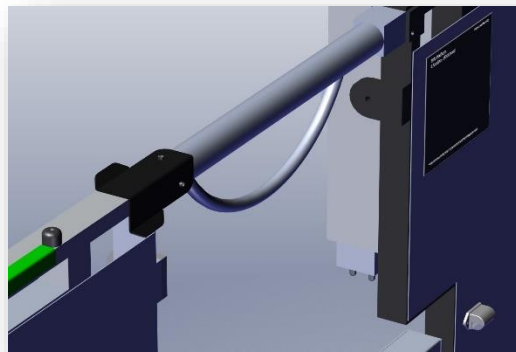
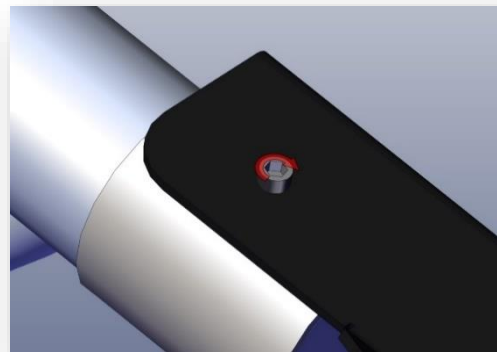
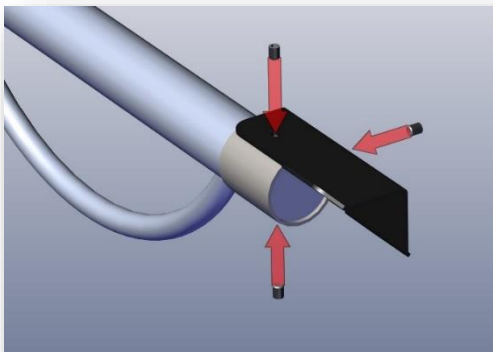
Description	See Page
Mansaver Safety Brace Instructions	2-3
Certificate of Remedy	4

Installation Instructions

Step 1 – Position the brace. Slide the mansaver bracket onto the existing mansaver until the tube bottoms out.



Step 2 – Secure the brace. Tighten the 3 set screws securely, paying close attention to the orientation of the bracket in reference to the adjacent wall. The bracket should rest on the top and inside face of the adjacent wall.

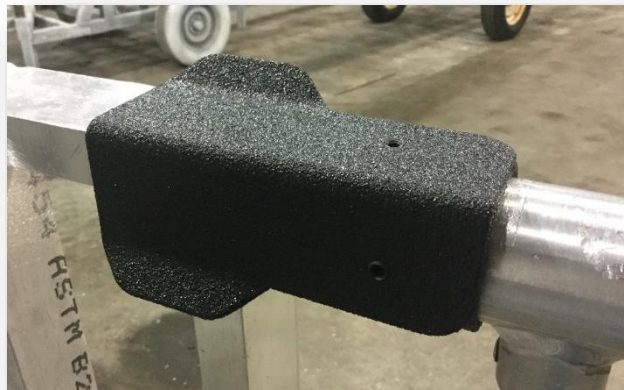


Step 3 – Verify Functionality. After the brace is installed, the mansaver should move freely and fall back into similar alignment as before the installation. Following installation, but before the machine is returned to service, perform the following steps to ensure proper engagement with the rear wall.

Step 3.1 – Vertical Alignment. Raise the mansaver bar above the wall to simulate entrance to or exit from the platform and allow the bar to fall freely. The bar should return to the neutral position with the brace re-engaged to the platform wall.



Step 3.2 – Horizontal Alignment. Pull the mansaver bar away from the wall and release, allowing the bar to close freely. Again, the bar should return to the neutral position with the brace re-engaged to the platform wall.



NOTE: When properly installed, the mansaver bar and brace should align with the rear wall as shown and described in Step 3. If any alignment issues exist following installation, please contact Smeal Fire Apparatus for further action.



UST LE
WE BUILD RESPECT.

Smeal Fire Apparatus Co.
 610 W 4th Street
 P.O. Box 8
 Snyder, NE 68664

Certificate of Remedy
Aerial Platform Recall
NHTSA Recall 16V887

REPAIR FACILITY NAME: _____

ADDRESS: _____

CITY: _____

STATE: _____ ZIP: _____

CONTACT NAME: _____

CONTACT TITLE: _____

CONTACT DAYTIME PHONE NUMBER: _____

CONTACT EMAIL ADDRESS: _____

I hereby certify the NHTSA 16V887 remedy has been performed as directed.

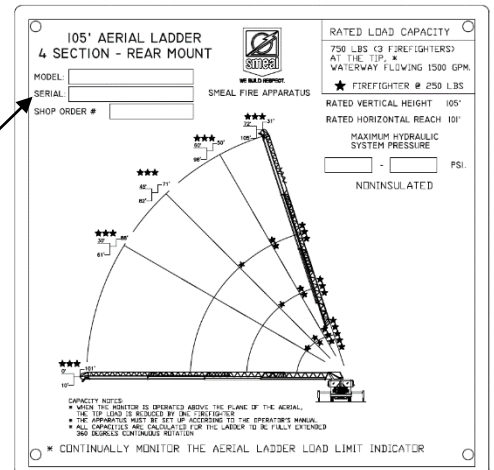
PRINT NAME: _____

SIGNATURE: _____

DATE SUBMITTED: _____

Chassis VIN	Aerial Serial Number*

* The Aerial Serial Number is the 6 digit code (XXXXXX) located on the Data Plate on the inside of the turntable control console cover.



NOTICE: Please email this completed document to Smeal Fire Apparatus Co. service@smear.com.

Questions: Contact John Rasmus at +1(402) 218-1541 or e-mail at john@smear.com.