



Mercedes-Benz

Campaign No. 2016030006, April 2016

TO: ALL MERCEDES-BENZ CENTERS

SUBJECT: **Model 906, Model Years 2015 - 2016**  
**Replace Tire Pressure Label**

This Recall Campaign has been initiated because Daimler AG (DAG), the manufacturer of Sprinter vehicles, has determined that the subject Sprinter vehicles were equipped with tire pressure labels that indicate an incorrect (higher) maximum load capacity. To remedy this, an authorized Mercedes-Benz dealer will replace the tire pressure label with a new label showing the correct maximum load capacity.

Prior to performing this Recall Campaign:

- Please check VMI to determine if the vehicle is involved in the Campaign and if it has been previously repaired.
- Please review the entire Recall Campaign bulletin and follow the repair procedure exactly as described.

Please note that Recall Campaigns **do not expire** and may also be performed on a vehicle with a vehicle status indicator.

Approximately 2276 vehicles are involved.

Order No. V-RC-2016030006

This bulletin has been created and maintained in accordance with MBUSA-SLP S423QH001, Document and Data Control, and MBUSA-SLP S424HH001, Control of Quality Records.

**Procedure**

1. Refer to flow chart below to determine if tire pressure label replacement is required.

**Note:**

- Replace label (1, Figure 1) and affix protective foil if required.
- Clean vehicle's bonding surface prior to affixing label (if label replacement is required).

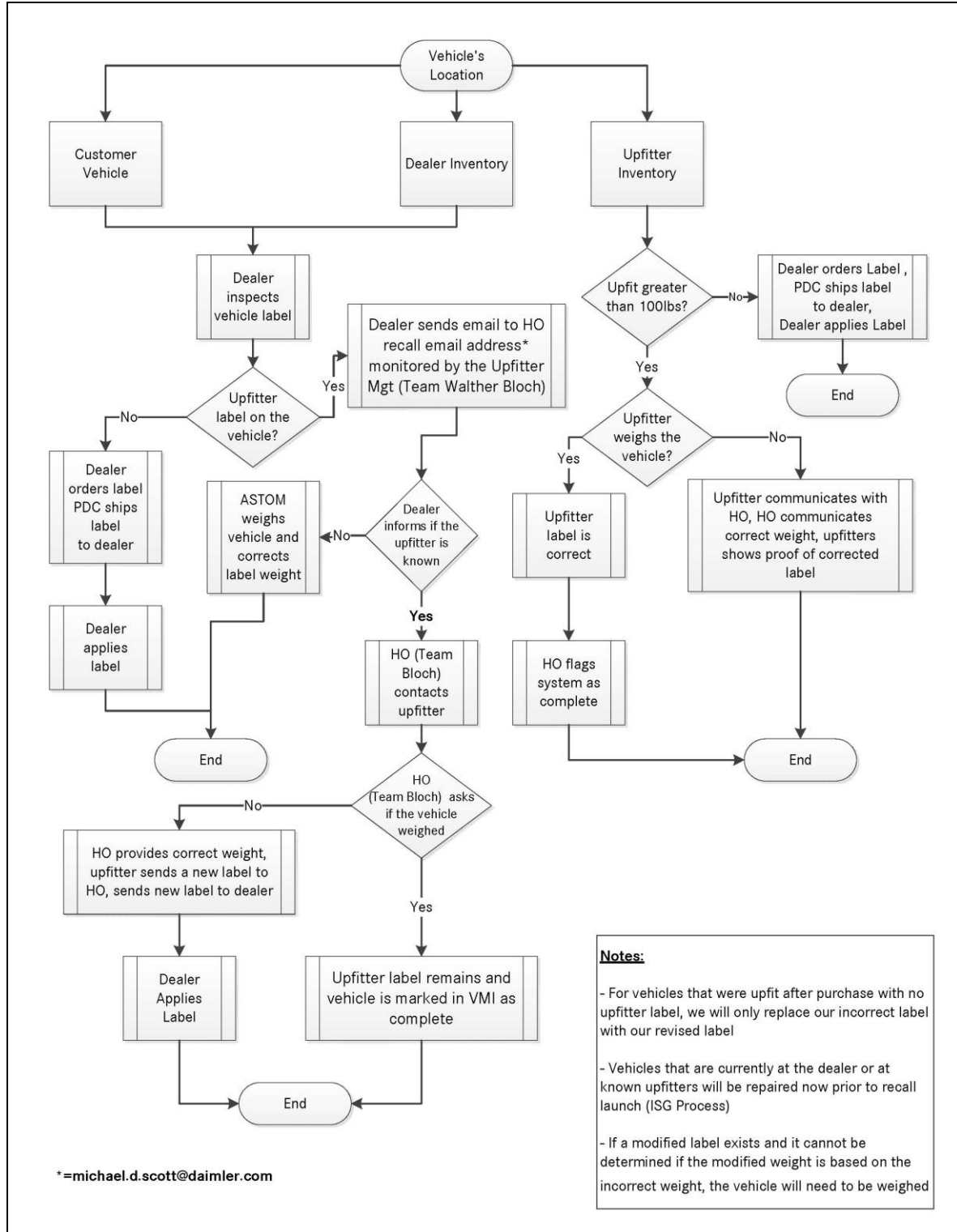




Figure 1

### Primary Parts Information

Qty.	Part Name	Part Number	Estimated Replacement Rate
1	Tire pressure label	A 906 584 66 38 26	100%
1	Protective foil	A 901 584 00 55	

**i** Note:

- Please be aware that only the part number(s) referenced in the Campaign Bulletin is/are approved for use to repair the vehicle. Repairs performed using any other part(s) will not have been performed in accordance with the campaign. Accordingly, warranty claims submitted with reference to an improper part number(s) will be denied.
- The following allowable labor operation should be used when submitting a warranty claim for this repair:

**Warranty Information**


---

**Operation:** Check/replace tire pressure label (02 9442).

<b>Damage Code</b>	<b>Operation Number</b>	<b>Labor Time (hrs.)</b>
40 940 52 7	02 9442	0.2

**i** Note

Operation Number labor times are subject to change.