

Motorcycle/ATV Division

General No. 124

January 29, 2016

REVISED August 31, 2016

SAFETY RECALL CAMPAIGN

2A56, 2457, 2A58, 2A59, 2A60, 2A61, 2A62, 2A63, 2A64

REGULATOR/RECTIFIER REPLACEMENT

**AN400K8-L1, AN400AL1-L2, DL1000K8-L2, GSF1250K8-K9,
GSX1300BK/BKAK8, GSX1300RK8-L2, GSX650FK9-L0, GSX-R600K8-L0,
GSX-R750K8-L0, SFV650K9-L0, VLR1800/TK8-L0, VZ1500K9-L0**

Reference: [General No. 111 Safety Recall Campaign Rectifier Replacement \(updated 1/29/2016\)](#)

Affected Departments: Management, Service, Warranty, Sales, Parts, Accessories

This notice is sent to you in accordance with the requirements of the National Traffic and Motor Vehicle Safety Act.

Suzuki Motor Corporation has decided that a defect which relates to motor vehicle safety exists in certain 2008 through 2012 Suzuki motorcycles and scooters (see the table on pages 2-3.)

NOTE:

This regulator/rectifier safety recall supersedes safety recall campaign numbers 2A15, 2A16, 2A17, 2A18, 2A19, 2A20, 2A21, 2A23, 2A24, 2A25 — these campaign numbers are closed on Suzuki Connect. However, campaign 2A22 for the 2008-2009 VL800/B/T/C for the previous regulator/rectifier recall is still in effect. Refer to General No. 111, campaign 2A22 for the VL800/B/T/C VIN range and parts information.

STOP DELIVERY OF AFFECTED MOTORCYCLES IMMEDIATELY

DO NOT SELL OR DELIVER an affected motorcycle or scooter to a customer until you have completed, or verified completion of, the repair procedures outlined in this bulletin.

It is a violation of Federal law to sell or deliver any new motorcycle, scooter or item of motor vehicle equipment subject to a safety recall campaign under a sale or lease until the defect or non-compliance has been corrected.

In addition, selling an unrepaired affected motorcycle or scooter is a direct violation of your Suzuki dealer agreement and may lead to additional sanctions.

What is the defect?

The regulator/rectifier power module circuit board may have absorbed moisture during storage under high humidity conditions, reducing the strength of the adhesive used to affix the circuit board to the aluminum case. Due to insufficient adhesion, heat generated by the power module circuit board can cause the circuit board to deform and lift off the case. This condition causes excessive heat on the circuit board and uncontrolled electric current output, which can result in insufficient charging current being provided to the battery. This can cause discharge of the battery and can lead to engine stalling and/or a no-start condition, increasing the risk of a crash.

The repair procedure for this new safety recall campaign must be performed on units previously repaired in the superseded safety recall campaign.

Verify if the vehicle is affected by the safety recall:

Confirm the recall status by checking the vehicle identification number (VIN), which is located on the right side of the steering head, against the Vehicle Master in Suzuki Connect to see if the regulator/rectifier needs to be replaced. If you have a question regarding motorcycle eligibility, contact your Suzuki Technical Service Manager or call Tech-Line at (714) 996-7480.

Affected Models and VIN Ranges:

Model	VIN Range
AN400K8	JS1CK44A*82100076 ~ JS1CK44A*82103583
AN400K9	JS1CK44A*92100002 ~ JS1CK44A*92100963
AN400L0	JS1CK44A*A2100002 ~ JS1CK44A*A2100005
AN400L1	JS1CK44A*B2100001 ~ JS1CK44A*B2100008
AN400AL1	JS1CK44B*B2100041 ~ JS1CK44B*B2100965
AN400AL2	JS1CK44B*C2100001 ~ JS1CK44B*C2100460
DL1000K8	JS1VT53A*82100027 ~ JS1VT53A*82101130
DL1000K9	JS1VT53A*92100003 ~ JS1VT53A*92100982
DL1000L0	JS1VT53A*A2100106
DL1000L2	JS1VT53A*C2100027 ~ JS1VT53A*C2101340
GSF1250SK8	JS1GW72A*82100003 ~ JS1GW72A*82100461
GSF1250SK9	JS1GW72A*92100002 ~ JS1GW72A*92100321
GSF1250SAK8	JS1GW72B*82100269 ~ JS1GW72B*82100698
GSF1250SAK9	JS1GW72B*92100031 ~ JS1GW72B*92100360
GSX1300BKK8	JS1GX71A*82100026 ~ JS1GX71A*82102864
GSX1300BKAK8	JS1GX71B*82100016 ~ JS1GX71B*82100224
GSX1300RK8	JS1GX72A*82100020 ~ JS1GX72A*82113469
GSX1300RK9	JS1GX72A*92100004 ~ JS1GX72A*92105360
GSX1300RL0	JS1GX72A*A2100001 ~ JS1GX72A*A2100575
GSX1300RL1	JS1GX72A*B2100007 ~ JS1GX72A*B2103822
GSX1300RL2	JS1GX72A*C2100002 ~ JS1GX72A*C2101965
GSX650FK8	JS1GP74A*82100034 ~ JS1GP74A*82104116
GSX650FK9	JS1GP74A*92100006 ~ JS1GP74A*92100682
GSX650FL0	JS1GP74A*A2100001 ~ JS1GP74A*A2100002
GSX-R600K8	JS1GN7EA*82100035 ~ JS1GN7EA*82113364
GSX-R600K9	JS1GN7EA*92100001 ~ JS1GN7EA*92106198
GSX-R600L0	JS1GN7EA*A2100007 ~ JS1GN7EA*A2100486
GSX-R750K8	JS1GR7LA*82100020 ~ JS1GR7LA*82106617
GSX-R750K9	JS1GR7LA*92100001 ~ JS1GR7LA*92104412
GSX-R750L0	JS1GR7LA*A2100005 ~ JS1GR7LA*A2100308
SFV650K9	JS1VP55A*92100029 ~ JS1VP55A*92102019
SFV650L0	JS1VP55A*A2100001 ~ JS1VP55A*A2100031
VLR1800/TK8	JS1VY54A*82100062 ~ JS1VY54A*82103211
VLR1800/TK9	JS1VY54A*92100005 ~ JS1VY54A*X92100536
VLR1800/TL0	JS1VY54A*A2100010 ~ JS1VY54A*A2100050
VZ1500K9	JS1VY55A*92100042 ~ JS1VY55A*92102308
VZ1500L0	JS1VY55A*A2100002 ~ JS1VY55A*A2100084

What your dealership will do:

- 1) Replace the regulator/rectifier as outlined in this technical service bulletin.
- 2) Submit a warranty claim.

What Suzuki Motor of America, Inc., will do:

During the week of March 1, 2016, Suzuki Motor of America, Inc., will mail notices to owners of affected motorcycles and scooters for whom we have information. The notice instructs the customer to contact a Suzuki dealer to schedule an appointment for the repair.

Ordering parts for the Safety Recall Campaign:

- 1) Check Suzuki Connect for parts availability.

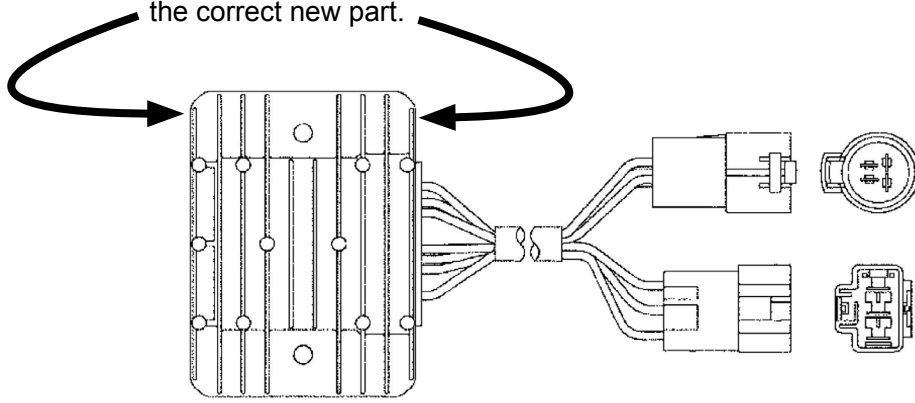
NOTE:

If you have any old parts inventory for the previous regulator/rectifier recall (General No. 111 Safety Recall Campaign Rectifier Replacement, dated 2/25/2011), you can return the parts to Suzuki for a full refund. See Parts Bulletin PA 16-02.

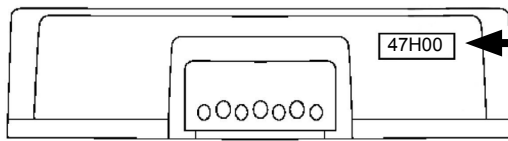
- 2) Use the normal parts ordering procedure for affected motorcycles and scooters in your inventory, and for customer units that are in your shop for service.
- 3) If you have questions regarding your parts order, please contact National Parts Coordination at (714) 854-2165.
- 4) The new countermeasure part for each affected model has a special identifying number on the front side or back side so you can confirm you are installing the correct new part. These unique identifying numbers are listed below.

NEW REGULATOR/RECTIFIER ASSEMBLIES						
Model	Year	Part Number	Unique Identifier	Qty	Campaign Number	Labor Time
AN400/A	2008	32800-47H40-RX0	47H40	1	2A56	0.5
AN400/A	2009-2012	32800-47H50-RX0	47H50	1	2A57	0.5
DL1000*	2008-2012	32800-06G02-RX0	06G02	1	2A58	0.3
GSF1250/A/S/SA	2007-2010	32800-47820-RX0	47H00	1	2A59	0.2
GSX650F/FA	2008-2010	32800-47820-RX0	47H00	1	2A59	0.3
GSX1300BK/BKA*	2008-2010	32800-15840-RX0	15H01	1	2A60	0.5
GSX1300R*	2008-2012	32800-15830-RX0	15H11	1	2A61	0.5
GSX-R600/GSX-R750	2008-2010	32800-47H00-RX0	47H00	1	2A62	0.7
SFV650/A	2009-2012	32800-47H00-RX0	47H00	1	2A62	0.3
VLR1800/T	2008-2011	32800-10820-RX0	10G20	1	2A63	0.4
VZ1500	2009-2010	32800-10830-RX0	10G20	1	2A64	0.4

The unique identifier is on the front side or back side of the new regulator/rectifier assembly so you can confirm you are installing the correct new part.



Sample of New Regulator/Rectifier Assembly



Unique Identifier on the Side

NEW

***NOTE:**
The countermeasure parts for the DL1000, GSX1300BK/BKA and GSX1300R have a black square as shown to the right.



Warranty Claim Processing:

Submit a warranty claim for each regulator/rectifier assembly service immediately upon completion. This campaign requires you to file a warranty claim using ONE of the methods described below.

Suzuki Connect Short Campaign Claim:

REGULATOR/RECTIFIER ASSEMBLY RECALL CAMPAIGN SUZUKI CONNECT SHORT FORM INSTRUCTIONS	
CLAIM INFORMATION:	
CLAIM NUMBER:	XXXXX.X (Dealer enters number)
ENTRY TYPE:	VIN, Model/Frame or Control (Dealer chooses)
REPAIR DATE:	Enter date of repair
MILEAGE:	Enter mileage at repair date
CAMPAIGN NUMBER:	SEE TABLE ON PAGE 3 FOR CAMPAIGN NUMBERS*

***For campaign number 2A59 and the GSX650F/FA, you must use the long campaign form.**

***For campaign number 2A59 and the GSF1250/A/S/SA, you can use the short or the long campaign form.**

***For campaign number 2A62 and the SFV650/A, you must use the long campaign form.**

Suzuki Connect Long Campaign Claim:

The Long Campaign Claim entry should be used when additional parts or labor are required to complete the recall campaign service. **A Long Form Claim requires TSM authorization.**

REGULATOR/RECTIFIER ASSEMBLY RECALL CAMPAIGN SUZUKI CONNECT LONG FORM INSTRUCTIONS

CLAIM INFORMATION:

CLAIM NUMBER: XXXXX.X (Dealer enters number)
ENTRY TYPE: VIN, Model/Frame or Control (Dealer chooses)
REPAIR DATE: Enter date of repair
MILEAGE: Enter mileage at repair date
CAMPAIGN NUMBER: **SEE TABLE ON PAGE 3 FOR CAMPAIGN NUMBERS**
LABOR OPERATION:
LABOR TIME: **SEE TABLE ON PAGE 3 FOR LABOR TIMES**

PARTS INFORMATION

REPLACEMENT PART: **SEE TABLE ON PAGE 3 FOR REPLACEMENT PARTS**
ADDITIONAL PARTS: AS AUTHORIZED

FAILURE DESCRIPTION:

DESCRIPTION OF DEFECT: Regulator/Rectifier Assembly Replacement
DESCRIPTION OF REPAIR: Performed recall repair as required per Service Bulletin

Repair procedure:

Refer to the appropriate Service Manual below for removing and replacing the regulator/rectifier assembly.

<u>2008 AN400/A Service Manual</u>	<u>Section</u>
Front Leg Shield Removal and Installation	9D-14
Regulator/Rectifier Removal and Installation	1J-5
<u>2009-2012 AN400/A Service Manual</u>	<u>Section</u>
Front Leg Shield Removal and Installation	9D-14
Regulator/Rectifier Removal and Installation	1J-5
<u>2008-2012 DL1000/A Service Manual</u>	<u>Section</u>
Left Frame Cover Removal	6
Regulator/Rectifier Removal and Installation	7-9
<u>2007-2010 GSX650 Service Manual (for GSF650)</u>	<u>Section</u>
Engine Sprocket Cover Removal and Installation	3A-2
Regulator/Rectifier Removal and Installation	1J-8
<u>2007-2010 GSF1250/A/S/SA Service Manual</u>	<u>Section</u>
Engine Sprocket Removal and Installation	3A-2
Regulator/Rectifier Removal and Installation	1J-8

<u>2008-2010 GSX650F/FA Service Manual</u>	<u>Section</u>
Engine Sprocket Cover Removal and Installation	3A-2
Regulator/Rectifier Removal and Installation	1J-8
<u>2008-2010 GSX1300BK/BKA Service Manual</u>	<u>Section</u>
Under Cowling Removal and Installation	9D-16
Regulator/Rectifier Removal and Installation	1J-9
<u>2008-2012 GSX1300R Service Manual</u>	<u>Section</u>
Regulator/Rectifier Removal and Installation	1J-10
<u>2008-2010 GSX-R600 Service Manual</u>	<u>Section</u>
Regulator/Rectifier Removal and Installation	1J-9
<u>2008-2010 GSX-R750 Service Manual</u>	<u>Section</u>
Regulator/Rectifier Removal and Installation	1J-9
<u>2009-2012 SFV650/A Service Manual</u>	<u>Section</u>
Regulator/Rectifier Removal and Installation	1J-8
<u>2008-2011 VLR1800/T Service Manual</u>	<u>Section</u>
Exterior Parts Removal and Installation	9D-3
Regulator/Rectifier Removal and Installation	1J-7
<u>2009-2010 VZ1500 Service Manual</u>	<u>Section</u>
Exterior Parts Removal and Installation	9D-5
Regulator/Rectifier Removal and Installation	1J-8



SUZUKI MOTOR OF AMERICA, INC.

IMPORTANT SAFETY RECALL

This Notice Applies to Your Suzuki Vehicle Identification Number (VIN)
XXXXXXXXXXXXXXXXXXXX

February 19, 2016

Dear Suzuki Owner:

This notice is sent to you in accordance with the requirements of the National Traffic and Motor Vehicle Safety Act.

Suzuki Motor Corporation has decided that a defect which relates to motor vehicle safety exists in certain 2008 through 2012 Suzuki motorcycles and scooters. This includes the following models:

2008 GSX1300BK/GSX1300BKA	2008-2010 VLR1800 / VLR1800T
2008-2009 GSF1250S/GSF1250SA	2008-2012 AN400/AN400A
2008-2010 DL1000	2008-2012 GSX1300R
2008-2010 GSX650F	2009-2010 SFV650
2008-2010 GSX-R600	2009-2010 VZ1500
2008-2010 GSX-R750	2012 DL1000

What is the defect?

The regulator/rectifier power module circuit board may have absorbed moisture during storage under high humidity conditions, reducing the strength of the adhesive used to affix the circuit board to the aluminum case. Due to insufficient adhesion, heat generated by the power module circuit board can cause the circuit board to deform and lift off the case. This condition causes excessive heat on the circuit board and uncontrolled electric current output, which can result in insufficient charging current being provided to the battery. This can cause discharge of the battery and can lead to engine stalling and/or a no-start condition, increasing the risk of a crash.

NOTE:

It is important that you have this safety recall repair made to your Suzuki motorcycle or scooter, even if the regulator/rectifier was replaced in the previous safety recall announced in March 2011.

What is Suzuki Motor of America, Inc., doing to correct the defect?

Your dealer will replace the regulator/rectifier on your Suzuki motorcycle or scooter. This procedure will take approximately one hour to complete. Parts are available now, and there will be no charge to you for any recall service-related parts or labor.

What you should do:

Make sure you are prepared for the recall service by taking the following steps:

- **Before taking your motorcycle or scooter to your dealer, contact them as soon as possible to make an appointment for the recall service.**
- Be sure to provide your dealer with your motorcycle's VIN so they can order the necessary parts for the repair.
- Please take this notice to your dealer to help your dealer process your claim.

What to do if you receive this notice in error:

This notice was mailed to you according to the latest information that is available to us. If you no longer own the Suzuki motorcycle or scooter described in this letter, please complete and return the attached Change of Address/Ownership card to Suzuki Motor of America, Inc., and forward this recall information to the current owner (if known).

Federal regulations require that any vehicle lessor receiving this recall notice must forward a copy of this notice to the lessee within ten days.

Customer reimbursement for prior regulator/rectifier replacement or other repairs related to this safety recall:

If your motorcycle or scooter is included in this recall and you have paid for repairs to address failure of the regulator/rectifier due to insufficient adhesion of the power module circuit board, you may be eligible for full or partial reimbursement. Please note the following conditions for reimbursement:

- Only repairs made to address the defect that led to this recall are reimbursable. Additional expenses such as towing, car rental, accommodations, damage repairs, etc., will not be reimbursed. Reimbursement will not be provided for routine scheduled maintenance.
- Reimbursement may be limited to the suggested list price for parts, the Suzuki published flat rate time allowance for the repair, and the labor rate that an authorized Suzuki dealer in the same area would charge for the same repair.
- An owner will not be eligible for reimbursement if the expenses for repairs are incurred more than 10 days after the date of the last owner notice sent by Suzuki Motor of America, Inc.
- Reimbursement claims may also be excluded when adequate documentation is not submitted by the claimant. This includes a proof of ownership, a repair order, and proof of payment for the repair.

To apply for reimbursement:

- 1) Go to www.suzukicycles.com.
- 2) Select **Safety Recalls** at the lower right side of the home page.
- 3) When the page refreshes, select **Recall Notification Letters**.
- 4) Select **Rectifier Recall Reimbursement**.

Who to contact if you experience problems:

Your Suzuki dealer can provide you the fastest response to your questions or concerns about the Regulator/Rectifier Safety Recall. If you have any difficulty with this recall campaign, you may contact the Suzuki Motor of America, Inc., Customer Service Department for assistance at (714) 572-1490 during the hours of 7:00 AM to 4:30 PM Pacific Time. Please have your vehicle identification number (VIN) ready when calling.

If you need to locate your nearest Suzuki Dealer, please visit www.suzukicycles.com and click on the "FIND A DEALER" tab, which is located in the upper right corner of our website.

If you believe that Suzuki Motor of America, Inc., has failed to provide the recall service without charge or is unable to do so within a reasonable time, you may submit a complaint to the Administrator of the National Highway Traffic Safety Administration, 1200 New Jersey Ave., S.E., Washington D.C., 20590 or call the toll-free Vehicle Safety Hotline at 1-888-327-4236 (TTY: 1-888-424-9153) or go to www.safercar.gov.

We apologize for any inconvenience this recall campaign causes you. We hope you understand that your safety and satisfaction are important priorities for us.

Sincerely,

Suzuki Motor of America, Inc.