



SERVICE BULLETIN

Bulletin Type.....: Safety Recall

Bulletin No.....: TS-S106

**Bulletin Name.....: Replacement of steering gear box-
chassis connection bolts**

Bulletin Ref No.....: 700002706

NHTSA.....: 15V885000

Release Date.....: 19.01.2016

Expiry Date.....: 19.08.2017

Vehicle Model.....: TS 35

Fiat Rate Code.....: TSS106

Flat Rate Time.....: 120 min.

Summary : Replacement of steering gear box-
chassis connection bolts

Subject: This bulletin is for replacement of ZF
steering gear box- chassis connection bolts.

Bulletin Responsible: Erkan DEDE

Approved by.....: Hakan GÜNERDEM

Safety Recall/NHTSA Campaign# :
15V885000

Welding on the Chassis

- Always disconnect the batteries (starting with the negative lead).
- Disconnect the connectors of electrical and electronic equipment (electronic control units, sensors and actuators) if they are less than 2 meters away from the chassis part to be welded or the earth terminal of the welding equipment.
- The earth terminal should never be attached to vehicle components such as engine, axles and springs. Arcing on these parts is not permitted, because of the risk of damage to bearings, springs, etc.
- The earth terminal must make good contact and be placed as close as possible to the part to be welded.
- Plastic pipes, rubber parts and parabolic springs should be well protected against welding spatter and temperatures higher than 70°.
- The contact switch must not be in the accessory or contact position. The contact key should be removed.
- Reconnect in reversed order of disconnecting. Ensure that a good earth connection is made between chassis, engine and cab.

Service bulletin expiry dates differ according to service bulletin type.

Definitions

Release Date: As of this date the bulletin is released and available on E-Doc. Modification parts can be ordered. The time period between the release date and the effective date may vary according to the procurement lead time.

Effective Date: As of this date specified amount of the total modification parts will be available on Spare Parts Stock. Modification parts can be ordered and the application can be performed. (except non-compliance and safety related campaigns, i.e. S-Type Bulletin)

Part Order Deadline: Last order date for modification parts. The part orders which will be placed after this date should be approved by Regional Coordinator.

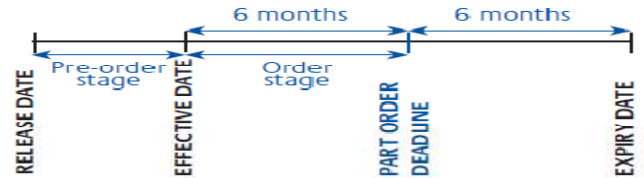
Expiry Date: Expiration date for the application.

Bulletin Types

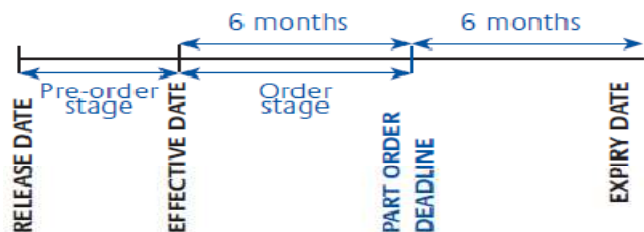
- **S-Type:** Application period of this bulletin is 18 months after the date of issue. S type bulletin is used for Recall Campaigns.



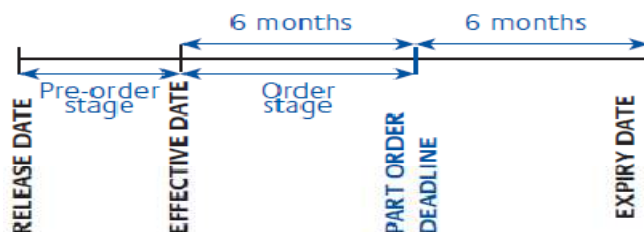
- **U-Type:** Application period of this bulletin is 12 months after the date of issue. U type bulletin is used for updates that need to be performed upon customer complaints.



- **C-Type:** Application period of this bulletin is 12 months after the date of issue. C type bulletin is generally used for supplying technical instructions or other type of information to service network.



- **M-Type:** Application period of this bulletin is 12 months after the date of issue. M type bulletin is used for updates that should be implemented without waiting for customer complaints.



PART LIST

Installed Parts List

No	Part No	Part Name	Qty	Unit Of Measure
1	BSMB10010C34Y	NUT,FLANGED,SERRATED,SAFE,M12x1,25-10K	6	Piece
2	MF140487Y	BOLT, WITH FLANGE (M12X1,25X35) K:10.9	6	Piece

Excluded Part List

No	Part No	Part Name	Qty.	Unit
1	TF445282Y	NUT,AKB, SAFE (M12x1,25-8,8)	6	Piece
2	MF101314Y	BOLT HEX 7T M12X1,25X35 K:8.8	6	Piece

TECHNICAL ORDERS :

Assembly Number: RP264000Y

Application 1.

*Take the vehicle to the port or lift

When you look at front axle area steering gear box from beneath the vehicle , unscrew MF101314Y and TF445282Y the bolts and nuts which have been used for connecting steering gear box plate to chassis as shown in figure (bottom view) one by one, replace them with MF140487Y and BSMB10010C34Y bolts and nuts , set the tightening torque to 92 ft-lbf (125 Nm) , complete the assembling.

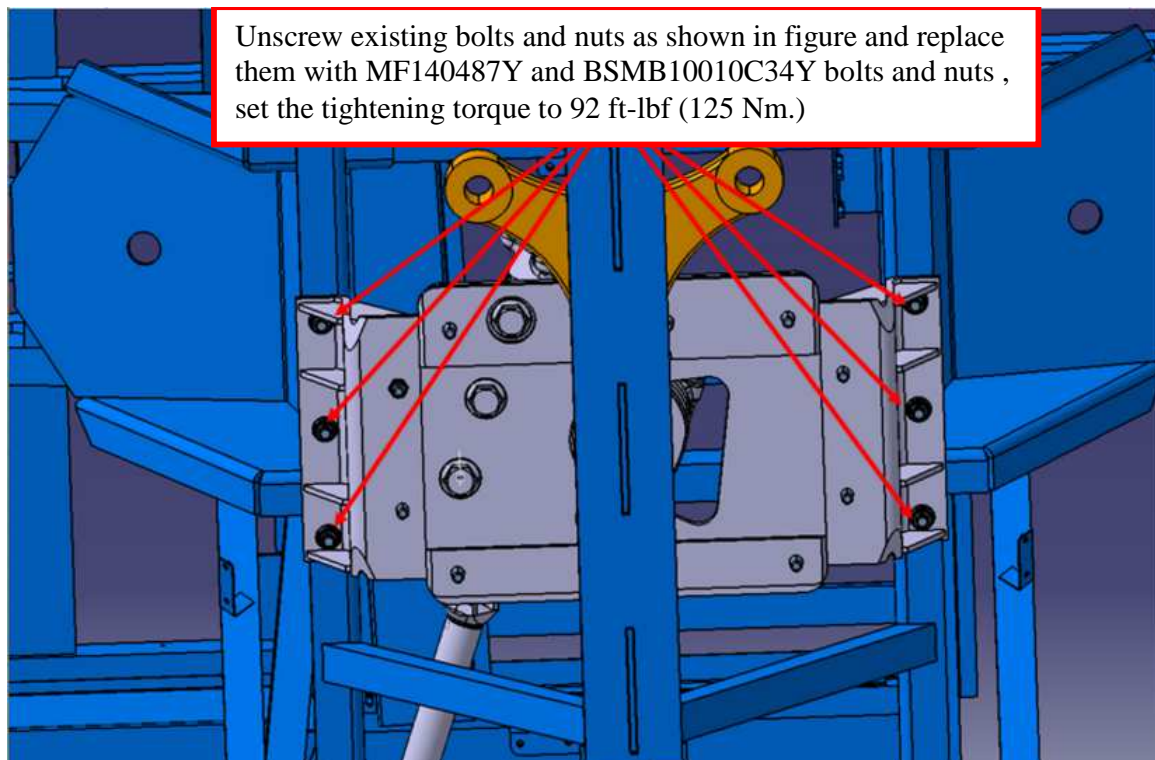
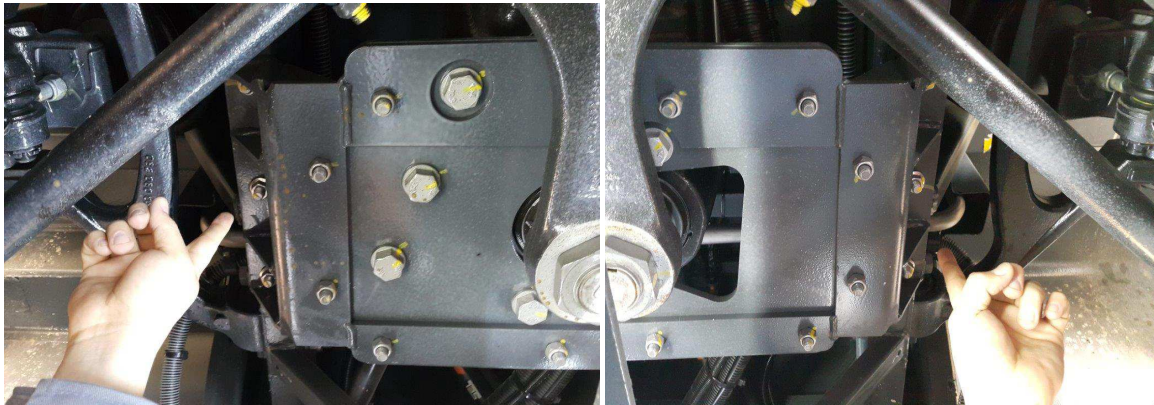


Figure-1A



SYSTEM CHECKS

- 1) Taking the vehicle, to the port or lift.
- 2) Locating the position of the bolts and nuts.
- 3) Replacing of the old bolts and nuts with the new ones.
- 4) Setting the tightening torque of new bolts and nuts to 92 ft-lbf (125 Nm).

RATE BREAK DOWN

Taking the vehicle, to the port or lift.	10 min.
Locating the position of the bolts and nuts.	10 min.
Replacing of the old bolts and nuts with the new ones.	60 min.
Setting the torque of new bolts and nuts to 92 ft-lbf (125 Nm)	40 min.
Total Time	120 min.