



# Recall Campaign

NHTSA#: 15V-848

TC#: 2016-007

Job Code: 9903273

Flat Rate: 1 hr

Date of Publication February 2016

**REQUIRES PARTS TO BE ORDERED FROM Jayco for every unit.**

### Action Required

Add new brackets to anchor the seat belts in the Dinette Bench seats

### Model / Serial Numbers

2016 Alante Class A MH      31L      G1AL0051-0119

### Part Kit Contents

**Note: Kit can only be ordered using the order form included with this bulletin.**

- 4 Plate, backer 6" x 7.5" x 7ga
- 8 Plate, backer 2.4" x 4" x 10ga
- 12 Screw, Hex Wshr 1/4 x 1" TEK
- 8 Screw, Hex cap 7/16-20 x 3.5" Gr5
- 16 Washer, Flat 7/16"
- 8 Washer, lock split 7/16"
- 8 Nut, Hex 7/16-20



TEK screws  
1/4 x 1"

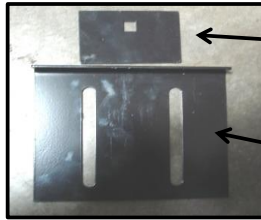


Plate 2.5"  
Qty of 8

Plate 6"  
Qty of 4

### Shop Supplies / Tools

- Screwgun with #2 square drive bit
- 11/16 open end/box end wrench
- 5/8 deep well socket
- 3/8" socket driver (for tek screws)
- Torque wrench (Ft / lbs)
- 11/16 deep well socket



3/8  
Socket  
driver

## INSTRUCTIONS

**NOTE: ALL OLD HARDWARE SHOULD BE DISCARDED.  
USE ONLY NEW HARDWARE FOR THE NEW BRACKET INSTALLATION.**



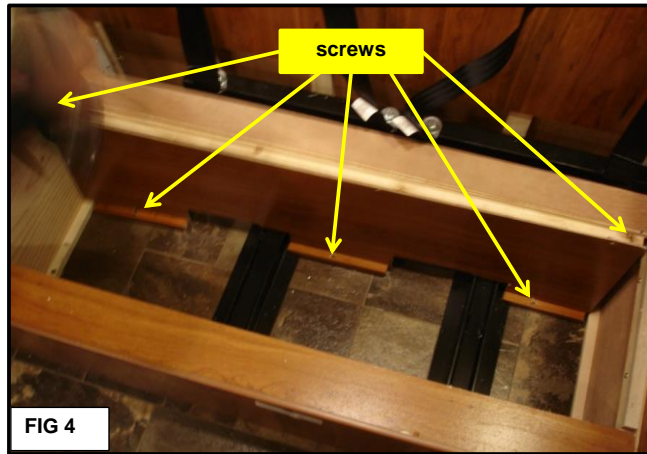
FIG 1



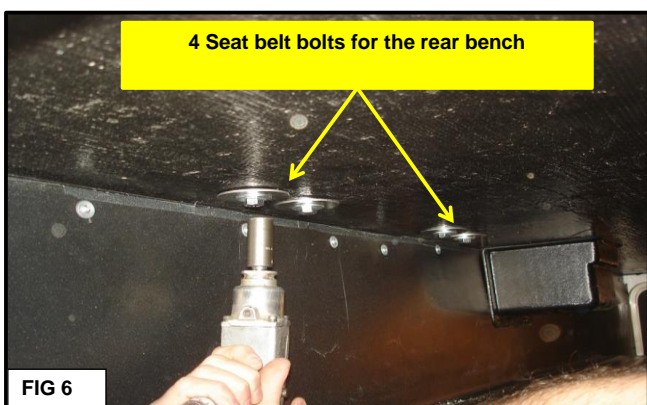
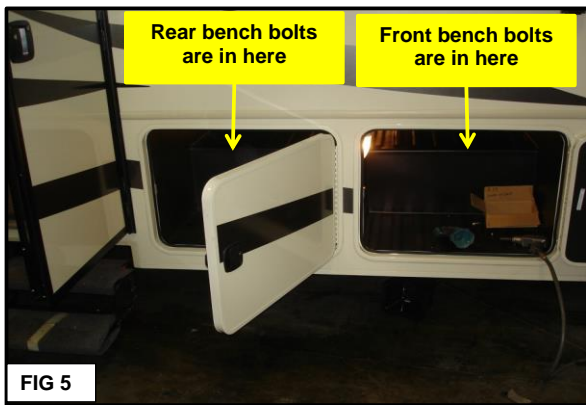
Remove  
covers

FIG 2

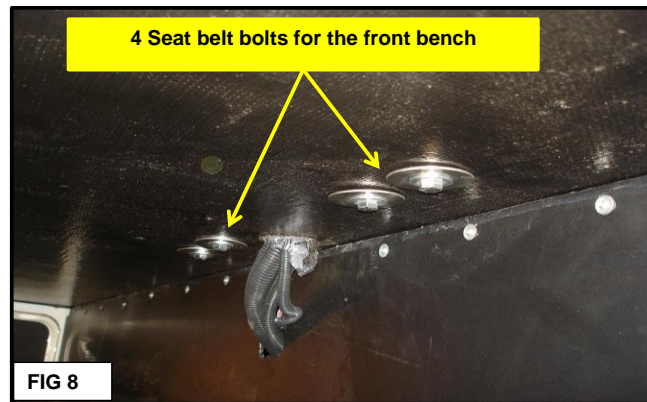
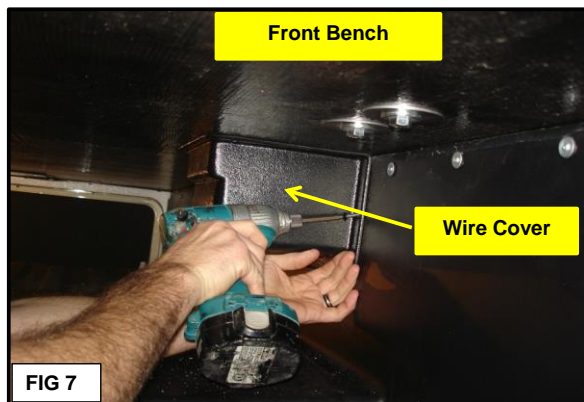
- 1 **Fig 1:** Seat belt bolts are located underneath the dinette seats.  
**Fig 2:** Remove the dinette table, cushions, and the seat storage covers.



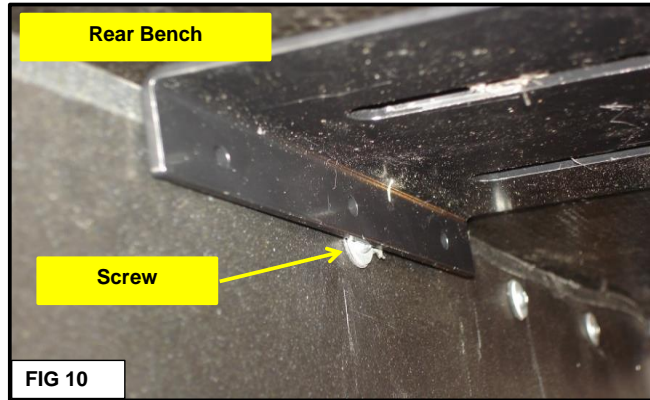
2 **Fig 3:** Remove the inner panel inside the front bench.  
**Fig 4:** Remove 5 screws holding the panel in place, then remove to reveal the seat belt hardware for the forward bench



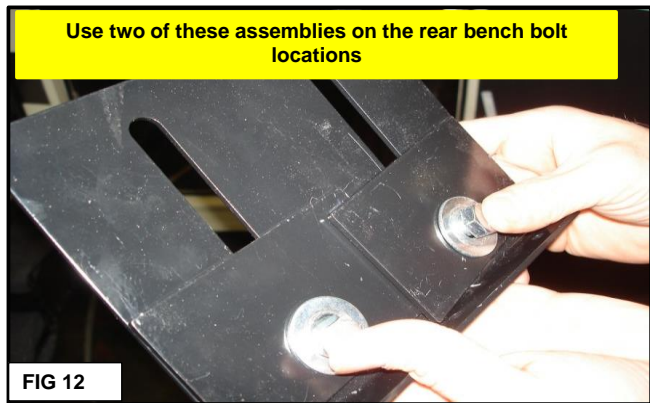
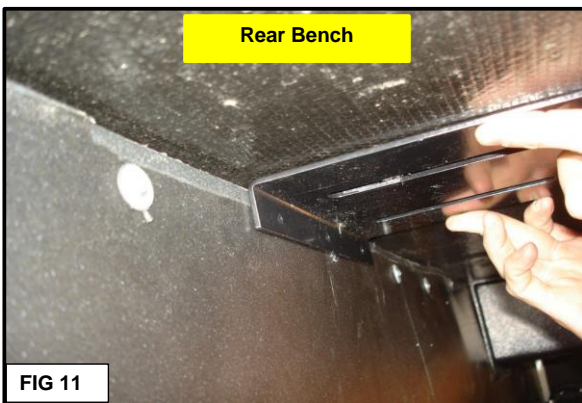
3 **Fig 5:** Seat belt bolts are located inside the two compartments next to entrance door.  
**Fig 6:** Four seat belt bracket bolts are shown here. Remove these bolts with the 5/8" socket. A second person inside the coach using an 11/16" wrench to hold the nuts is helpful. **Discard all the old hardware.**



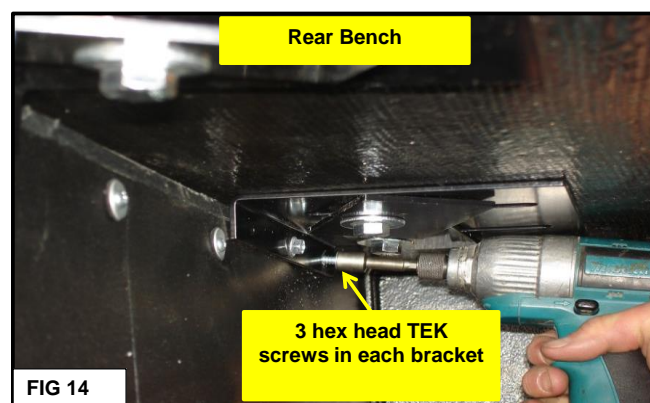
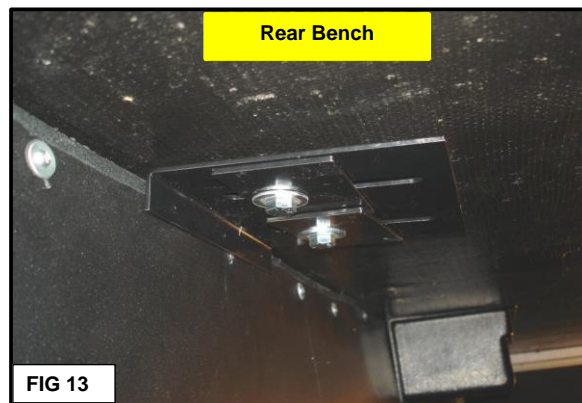
4 **Fig 7:** Remove the plastic wire cover (4 screws) in the front compartment to gain access to the other two seat belt bolts.  
**Fig 8:** Remove the 4 seat belt bolts with the 5/8" socket. **Discard all the old hardware.**



- 5 **Fig 9:** Shows the 11/16" wrench used on the top side to hold the hex nuts. **Discard the old hardware.**  
**Fig 10:** Place one of the 6" brackets in place as shown where the bench bolts were.  
**NOTE:** In this photo the bracket hits one of the screws and washers in the sidewall.  
 Remove any of these screws that interfere with the placement of the 6" bracket.



- 6 **Fig 11:** Fit bracket flush to the wall, and to the ceiling of the compartment.  
**Fig 12:** Install the large seat belt bracket assembly with the two smaller brackets.  
 One bracket overlaps the other one. It does not matter which overlaps which. **Use only new hardware provided in the kit.**  
 Install two of these assemblies on the rear bench seat belt locations.



- 7 **Fig 13:** Shows one of two seat belt brackets with the smaller brackets in position and overlapping.  
 Bracket must be flush to the sidewall and flush to the ceiling of the compartment.  
**Fig 14:** Install the hex head TEK screws with a 3/8" socket driver to secure the bracket to the sidewall. (3 per bracket)  
 Tighten the 4 large bolts - DO NOT torque at this time

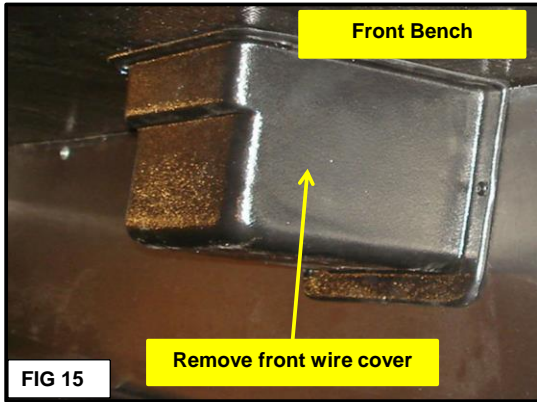


FIG 15

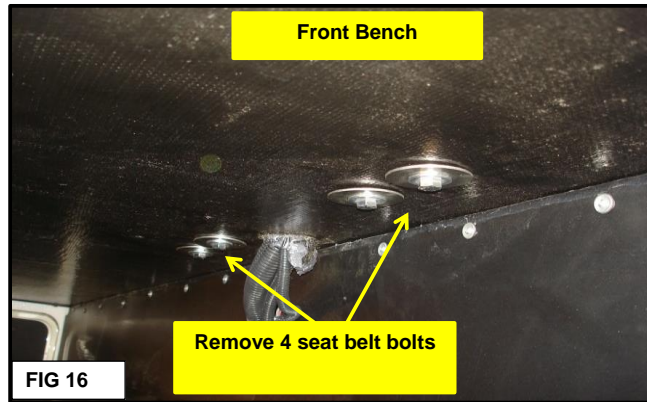


FIG 16

8 Fig 15: Remove the plastic wire cover( 4 screws) in the front compartment.

Fig 16: Remove the 4 seat belt bolts for the front bench. **Discard all the old hardware.**

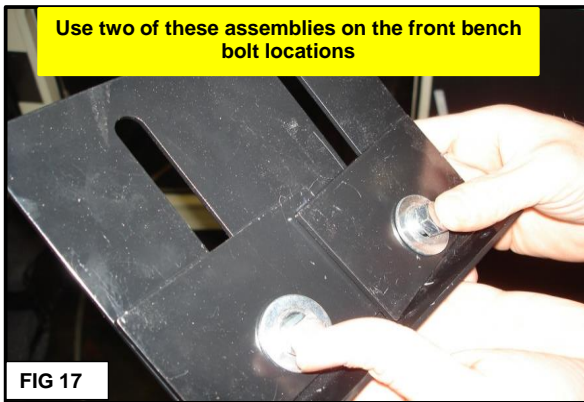


FIG 17

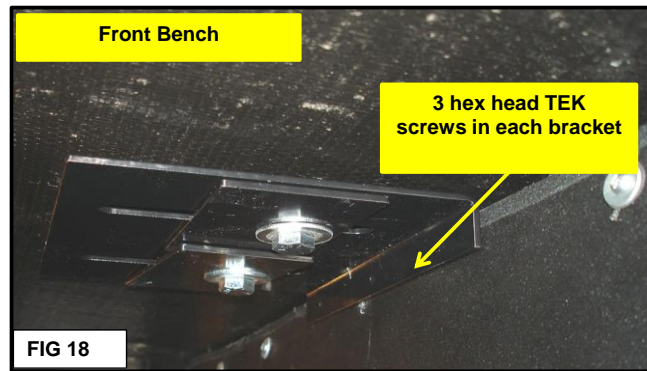


FIG 18

9 Fig 17: Two bracket assemblies will be used for the **front** bench.

Fig 18: Place the brackets against the sidewall (removing any screw(s) that interfere. Fig 10 & 11.

Install 3 hex head TEK screws in each bracket to secure the brackets to the sidewall Fig 14.

Tighten the 4 large bolts - DO NOT torque at this time



FIG 19

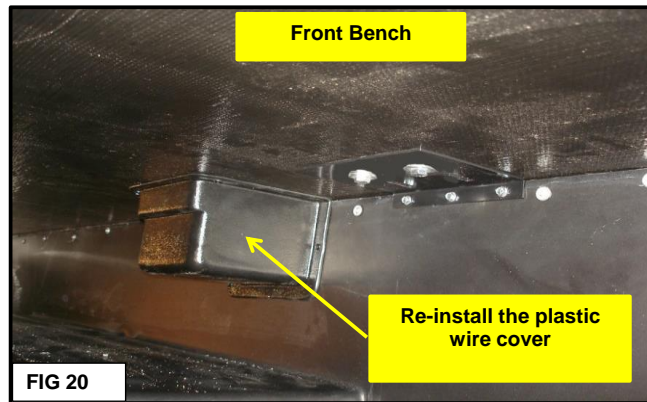


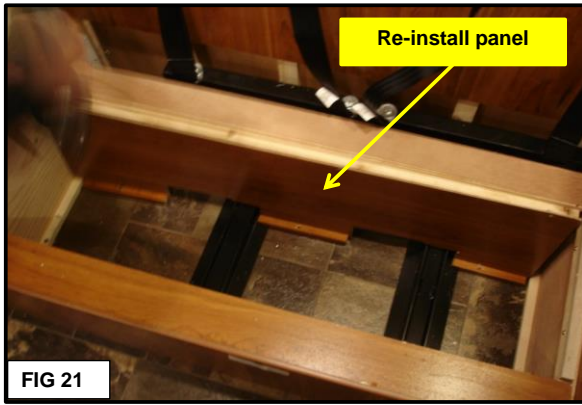
FIG 20

10 Fig 19: From inside the coach, torque all 8 of the large 7/16" nuts using the 11/16" deep well socket and torque wrench. A second person will need to use the 5/8" socket on the outside to keep the bolts from spinning.



**TORQUE THE 7/16" NUTS TO 35 FT / LBS**

Fig 20: Re-install the plastic wire cover in the front compartment using the 4 screws removed.



- 11 **Fig 21:** Re-install the panel under the front bench with the 5 screws removed in step 1  
**Fig 22:** Replace the wood seat covers on the benches  
Replace the cushions, lay the lap belts on top of the cushions and re-install the dinette table.