

REFERENCE:	Nova Bus Manuals
SECTION:	17: Radio and accessories
RS N°:	MQR N/A
EFFECTIVE IN PROD.:	N/A
TC RECALL N°:	TC 2015-524
NHTSA RECALL N°:	15B-735

APPLICATION DEADLINE: N/A
CLAIM REFERENCE NUMBER: SR-3492

SUBJECT:	Passenger counting sensor
JUSTIFICATION:	The passenger counting sensor may have a pinch point safety hazard which can result in injury.

LEVEL	DESCRIPTION	DIRECT CHARGES		TIME
		LABOUR	MATERIAL	
1	Relocate the sensor.	Nova Bus	Nova Bus	1.0 hour
2	–	–	–	–

MATERIAL

QTY	PART N°	REV.	DESCRIPTION	REPLACES PART N°
LEVEL 1				
1	6940917	–	RUBBER BUMPER	–
4	G5007993	–	CABLE TIE	–
1	N20301	–	SCREW M6X30 MACH PAN CR SS	–
12	N24459	–	WASHER FLAT M6 BK DIN125A	–
6	N24466	–	NUT DOMED CAP M6 BK PASS	–
6	N26930	–	SCREW M6 X 16 MACH R/CHEES CR	–
1.5	N30950	–	TAPE NEOPRENE 1/4"W X 1/8"T	–
2	N41677	–	CABLE TIE 4-WAY MOUNTING BASE	–
1	N81901	–	BRACKET APC 40FT UTA ASSEMBLY	–
6	N24474	–	LOCK WASHER M6 BK DIN 128A	–
LEVEL 2				
–	–	–	–	–

Materials will be available within 30 days. To order, please contact Prevost Parts by phone at 1-800-771-6682, by fax at 1-888-668-2555 or by email at prevostparts.commandes@volvo.com. Specify document number, quantity of parts required and shipping address.

DISPOSAL OF PARTS

REMOVED PARTS ARE:	DISCARDED *	RETAINED	* Dispose of the unused parts and the defective parts in accordance with local environmental standards in effect.
	Yes	–	

REVISION HISTORY

REV.	DATE	CHANGE DESCRIPTION	WRITTEN BY
NR	2015NO20	Initial release	Marc Rougeau

CLIENT	ORDER	ROAD NUMBER		VIN (2NVY/4RKY...)		QTY
		FROM	TO	FROM	TO	
BC Transit - BCT - British Columbia	L463	9319	9333	L82U093000273	L82U093000287	15
BC Transit - BCT - British Columbia	L481	9334	9353	L82U794000004	L82U094000023	20
BC Transit - BCT - British Columbia	L484	9370	9403	L82U494000090	L82U494000123	34
BC Transit - BCT - British Columbia	L486	9354	9369	L82U294000024	L82U494000039	16
BC Transit - BCT - British Columbia	L487	9404	9433	L82U094000149	L82U794000178	30
Honolulu - Hawaii	L559	201	224	L82U6A4000113	L82U7A4000136	24
SEPTA - Pennsylvania	L724	7300	7301	S92Y1D4500275	S92Y3D4500276	2
SEPTA - Pennsylvania	L728			L82W7D4500335	L82W7D4500335	1
SEPTA - Pennsylvania	L744	—	—	L82L7E4500570	L82LXE4500661	89
University of Alabama - Alabama	L573	—	—	L82U9A4000137	L82U0A4000138	2
University of Alabama - Alabama	L640	—	—	L82U9B4000141	L82U0B4000142	2
University of Alabama - Alabama	L671	7024	7025	L82U5C4500119	L82U1C4500120	2
University of Alabama - Alabama	L727	7026	7027	L82U4D4500310	L82U6D4500311	2
University of Alabama - Alabama	L787	—	—	L82J2E4500507	L82J4E4500508	2
University of Alabama - Alabama	L902	7030	7030	L82J2F4500993	L82J4F4500994	2

**WARNING**

Follow your internal safety procedures.

PROCEDURE

- 1.1. Turn **OFF** the battery master disconnect switch in the vehicle's battery compartment.
- 1.2. Locate the passenger counting sensor on the partition of the rear passenger door. See Figure 1.

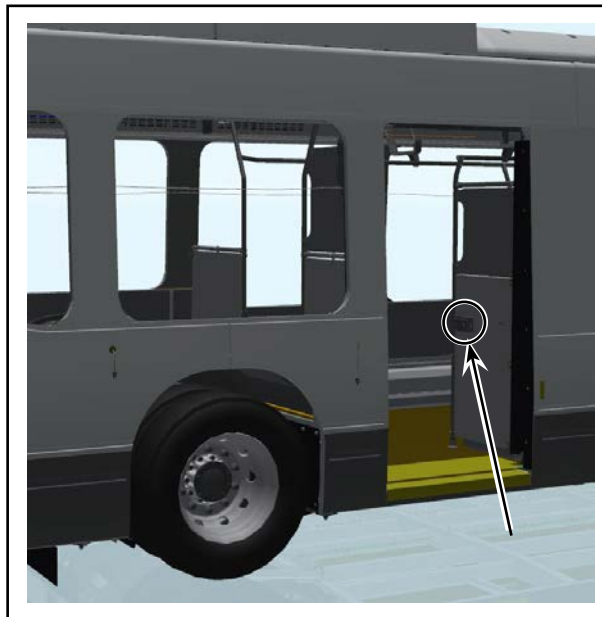


Figure 1 - Passenger Counting Sensor Location

- 1.3. Remove the sensor from the partition. Retain all the hardware.
- 1.4. Cut out the opening in the partition. See Appendix 1.
- 1.5. Drill 7 mm (0.275 in.) holes (6x) in the partition. See Appendix 1.
- 1.6. Install the sensor on the N81901 bracket. The nuts must be installed inside the sensor housing. See Figure 2. Use the retained hardware.

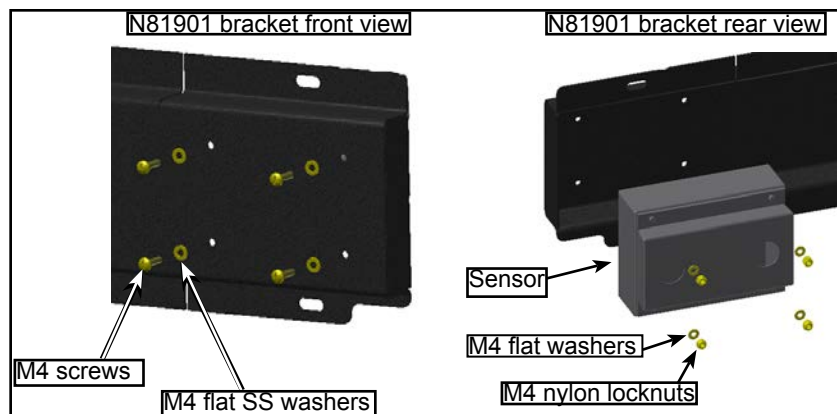


Figure 2 - Sensor Installation on the N81901 Bracket with Retained Hardware

- 1.7. Install N41677 (2x) cable tie mounting bases on the N81901 bracket. See Figure 3.

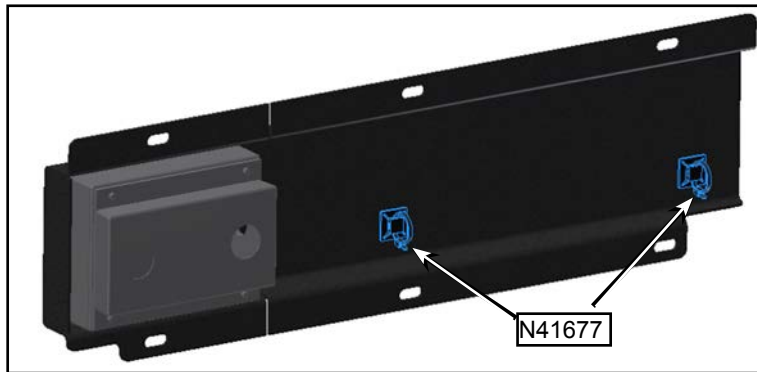


Figure 3 - N41677 Cable Tie Mounting Base Installation

- 1.8. Route the electrical cable and secure with G5007993 cable ties as needed. You may have too many. Dispose of unused cable ties. See Figure 4.

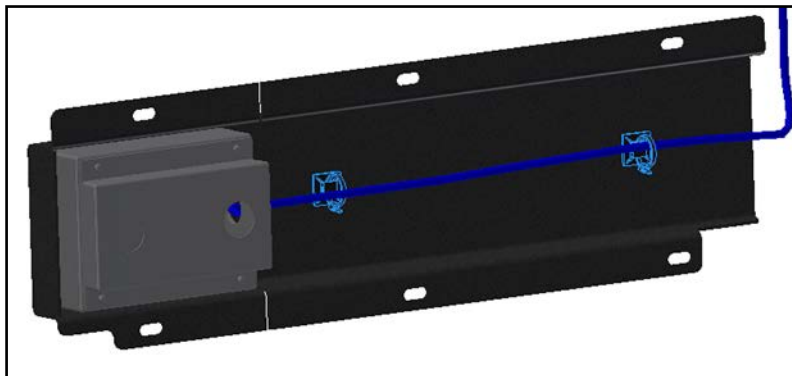


Figure 4 - Sensor Cable Routing

- 1.9. Install N30950 tape around the inside edge of the partition opening. See Figure 5.

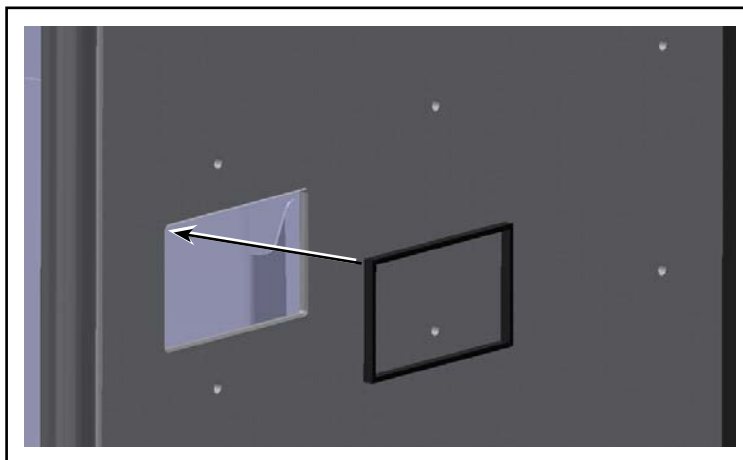


Figure 5 - N30950 Tape Installation on Partition Opening

- 1.10. Install the N81901 bracket with the sensor on the front side of the partition using N26930 screws (6x), N24459 flat washers (12x), N24474 lock washers (6x) and N24466 domed cap nuts (6x). See Figure 6.

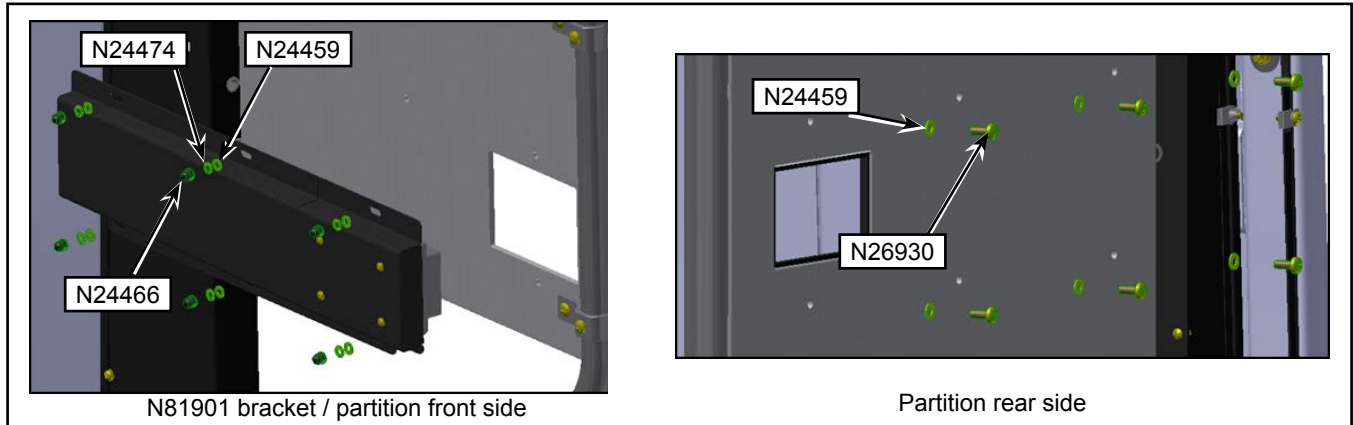


Figure 6 - N81901 Bracket Installation on Partition

- 1.11. Install rubber bumper 6940917 on the N81901 bracket using the N20301 screw **ONLY IF** the distance between the bracket and the seat is less than 38 mm (1.5 in.). See Figure 7.
- 1.11.1. If the rubber bumper is installed, adjust the modesty panel and seat so the bumper is in contact with the seat.

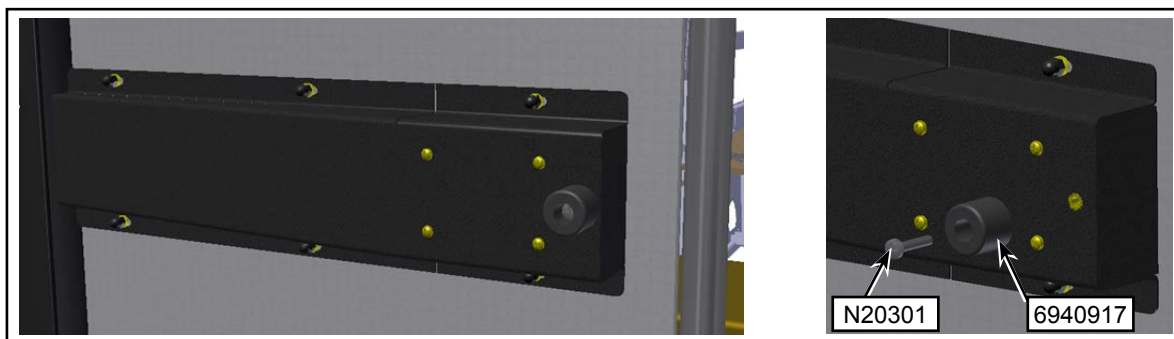


Figure 7 - 6940917 Rubber Bumper Installation on N81901 Bracket (Only if Needed)

- 1.12. Turn **ON** the battery master disconnect switch in the battery compartment.
- 1.13. Open the ITS tray. See Figure 8.



Figure 8 - Smart Sensor (CPU)/APC Analyzer Located in the ITS Tray

- 1.14. Locate the smart sensor (CPU)/APC analyzer in the ITS tray. See Figure 8.
- 1.15. Verify for the proper operation of the passenger counting sensor.
- 1.16. Check that the **POWER LED** is **ON** and solid green through the translucent cover of the smart sensor (CPU)/APC analyzer. See Figure 9.

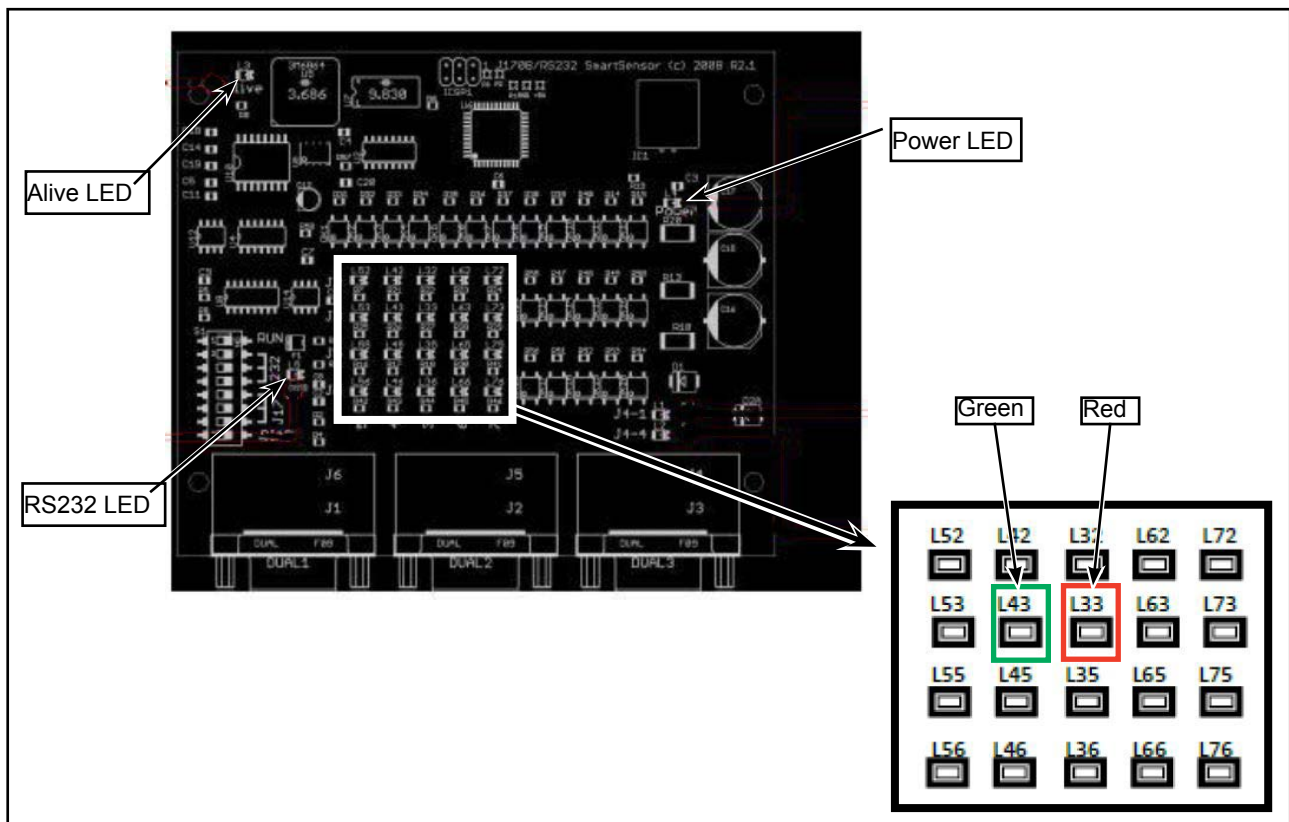
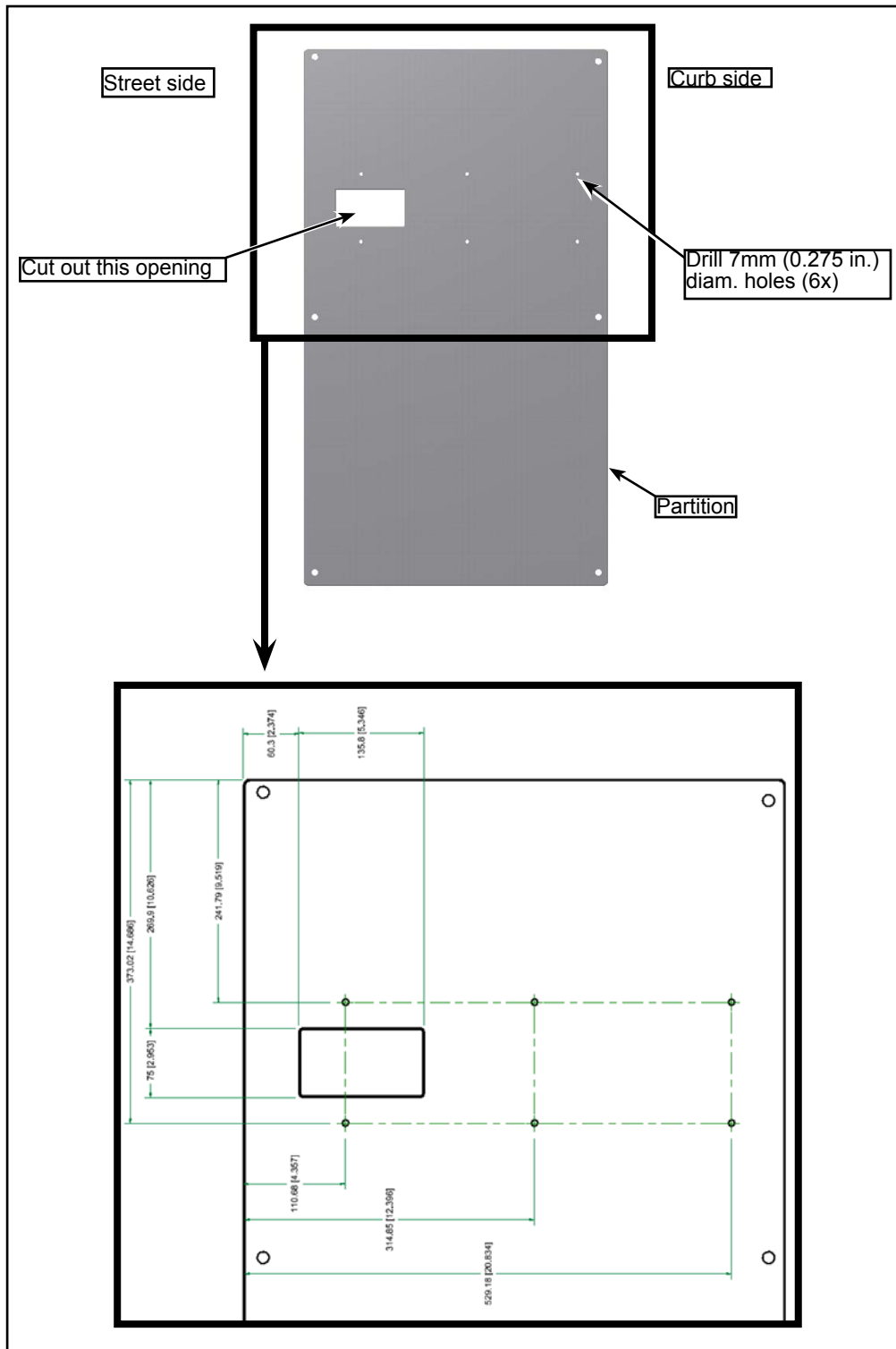


Figure 9 - Smart Sensor (CPU)/APC Analyzer LED Locations

- 1.17. Check that the **ALIVE LED** of the smart sensor is **ON** and flashing green. See Figure 9.
- 1.18. Check that the **RS232 LED** of the smart sensor is **OFF**. See Figure 9.
 - 1.18.1. Block the **FWD** (rear-facing) **OUTBOARD** sensor beam and check that the **L33 LED** of the smart sensor is solid **RED**. See Figure 9.
 - 1.18.2. Block the **FWD** (rear-facing) **INBOARD** sensor beam and check that the **L43 LED** of the smart sensor is solid **GREEN**. See Figure 9.
- 1.19. Close the ITS tray.
- 1.20. The vehicle may returned to service. ❖

APPENDIX 1



Partition Drilling Layout. Measurements in mm (in.)