

REFERENCE:	Nova Bus Manuals
SECTION:	17: Radio and accessories
RS N°:	MQR N/A
EFFECTIVE IN PROD.:	N/A
TC RECALL N°:	N/A
NHTSA RECALL N°:	15B-735

APPLICATION DEADLINE: N/A
REFERENCE NUMBER: SR-3493

SUBJECT:	Passenger counting sensor
JUSTIFICATION:	The passenger counting sensor may have a pinch point safety hazard which can result in injury.

LEVEL	DESCRIPTION	DIRECT CHARGES		TIME
		LABOUR	MATERIAL	
1	Relocate the sensor.	Nova Bus	Nova Bus	1.5 hour
2	–	–	–	–

MATERIAL

QTY	PART N°	REV.	DESCRIPTION	REPLACES PART N°
LEVEL 1				
4	G5007993	–	CABLE TIE	–
12	N24459	–	WASHER FLAT M6 BK DIN125A	–
6	N24466	–	NUT DOMED CAP M6 BK PASS	–
6	N24474	–	LOCK WASHER M6 BK DIN 128A	–
6	N25881	–	SCREW M6 X 20 MACH R/CHEES CR	–
2	N41677	–	CABLE TIE 4-WAY MOUNTING BASE	–
1	N81834	–	BRACKET APC FRONT UTA ASSEMBLY	–
1	N81835	–	BRACKET APC BACK UTA ASSEMBLY	–
1	N82084	–	DECAL WARNING APC SEPTA	–
LEVEL 2				
–	–	–	–	–

Materials will be available within 30 days. To order, please contact Prevost Parts by phone at 1-800-771-6682, by fax at 1-888-668-2555 or by email at prevostparts.commandes@volvo.com. Specify document number, quantity of parts required and shipping address.

DISPOSAL OF PARTS

REMOVED PARTS ARE:	DISCARDED *	RETAINED	* Dispose of the unused parts and the defective parts in accordance with local environmental standards in effect.
	Yes	–	

REVISION HISTORY

REV.	DATE	CHANGE DESCRIPTION	WRITTEN BY
NR	2015NO20	Initial release	Marc Rougeau

CLIENT	ORDER	ROAD NUMBER		VIN (2NVY/4RKY...)		QTY
		FROM	TO	FROM	TO	
LYNX - Florida	L725	—	—	S92Y9D4500329	S92Y5D4500330	2
LYNX - Florida	L764	—	—	S92Y7D4500331	S92Y9D4500332	2
LYNX - Florida	L785	—	—	S92L6E4500505	S92L8E4500506	2
SEPTA - Pennsylvania	L741	—	—	S92L4E4500504	S92L4E4500504	1
SEPTA - Pennsylvania	L742	7371	7414	S92L6E4500729	S92L7E4500772	44
SEPTA - Pennsylvania	L743	—	—	S92L1E4500489	S92L2E4500503	15
SEPTA - Pennsylvania	L745	7415	7415	S92L0F4500873	S92L0F4500873	1
SEPTA - Pennsylvania	L746	7416	7454	S92L7F4500952	S92L8F4501012	39
SEPTA - Pennsylvania	L749	7302	7354	S92Y7D4500409	S92L2E4500470	53

**WARNING**

Follow your internal safety procedures.

PROCEDURE

- 1.1. Turn **OFF** the battery master disconnect switch in the vehicle's battery compartment.
- 1.2. Locate the passenger counting sensor on the partition of the rear passenger door. See Figure 1.



Figure 1 - Passenger Counting Sensor Location

- 1.3. Remove the sensor from the partition. Retain all the hardware.
- 1.4. Cut out the opening in the partition. See Appendix 1.
- 1.5. Drill 7 mm (0.275 in.) holes (6x) in the partition. See Appendix 1.
- 1.6. Install the sensor on the N81835 bracket. The nuts must be installed inside the sensor housing. See Figure 2. Use the retained hardware.

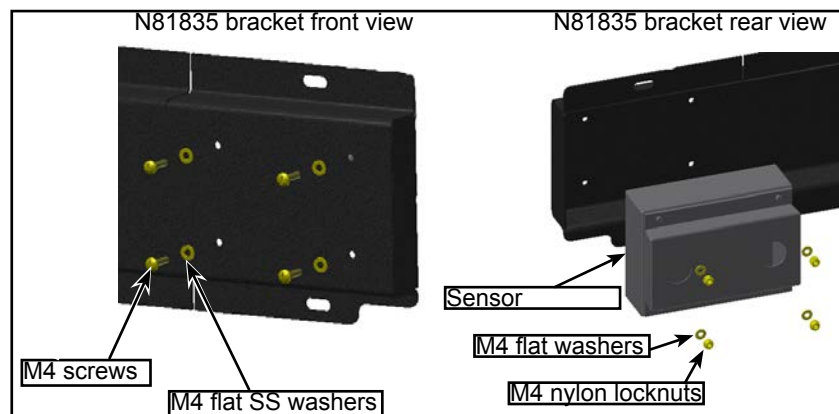


Figure 2 - Sensor Installation on the N81835 Bracket with Retained Hardware

1.7. Install N41677 (2x) cable tie mounting bases on the N81835 bracket. See Figure 3.

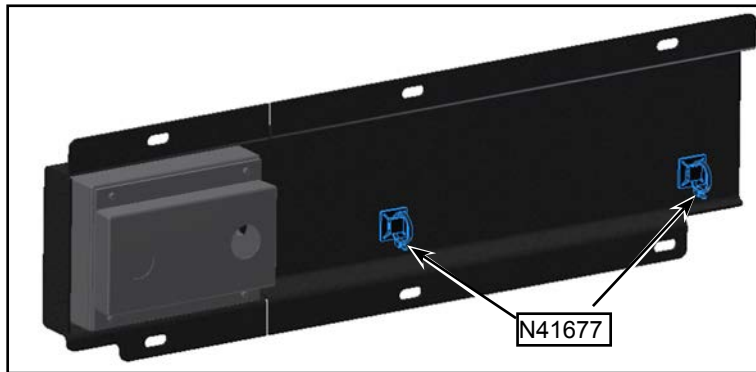


Figure 3 - N41677 Cable Tie Mounting Base Installation

1.8. Route the electrical cable and secure with G5007993 cable ties as needed. You may have too many. Dispose of unused cable ties. See Figure 4.

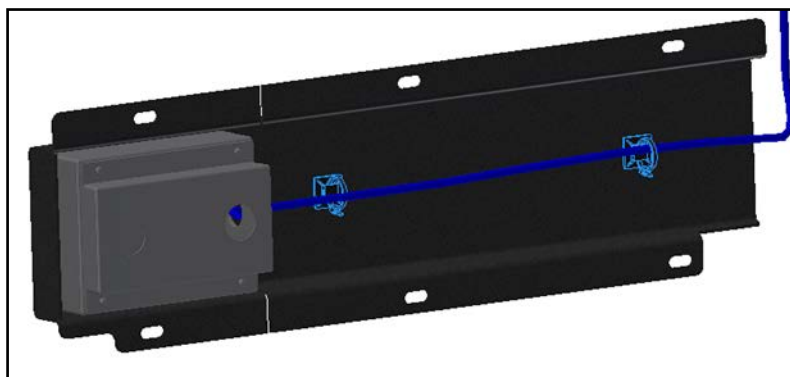


Figure 4 - Sensor Cable Routing

1.9. Install the N81835 bracket with the sensor on the front side of the partition and install the N81834 bracket on the rear side of the partition using N25881 screws (6x), N24459 flat washers (12x), N24474 lock washers (6x) and N24466 domed cap nuts (6x). See Figure 5.

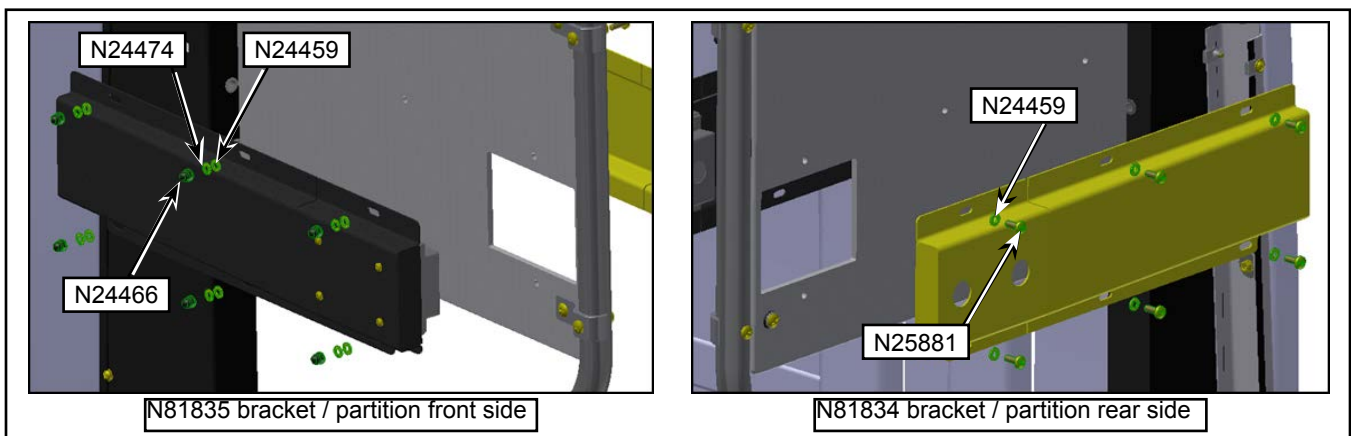


Figure 5 - Bracket Installation on Partition

- 1.10. Clean the N81834 bracket installed on the rear side of the partition.
- 1.11. Apply the N82084 warning decal on the N81834 bracket installed on the rear side of the partition. See Figure 6.



Figure 6 - Warning Decal Installation on N82084 (Partition Rear Side)

- 1.12. Turn **ON** the battery master disconnect switch in the battery compartment.
- 1.13. Open the ITS tray. See Figure 7.



Figure 7 - Smart Sensor (CPU)/APC Analyzer Located in the ITS Tray

- 1.14. Locate the smart sensor (CPU)/APC analyzer in the ITS tray. See Figure 7.
- 1.15. Verify for the proper operation of the passenger counting sensor.
- 1.16. Check that the **POWER LED** is **ON** and solid green through the translucent cover of the smart sensor (CPU)/APC analyzer. See Figure 8.

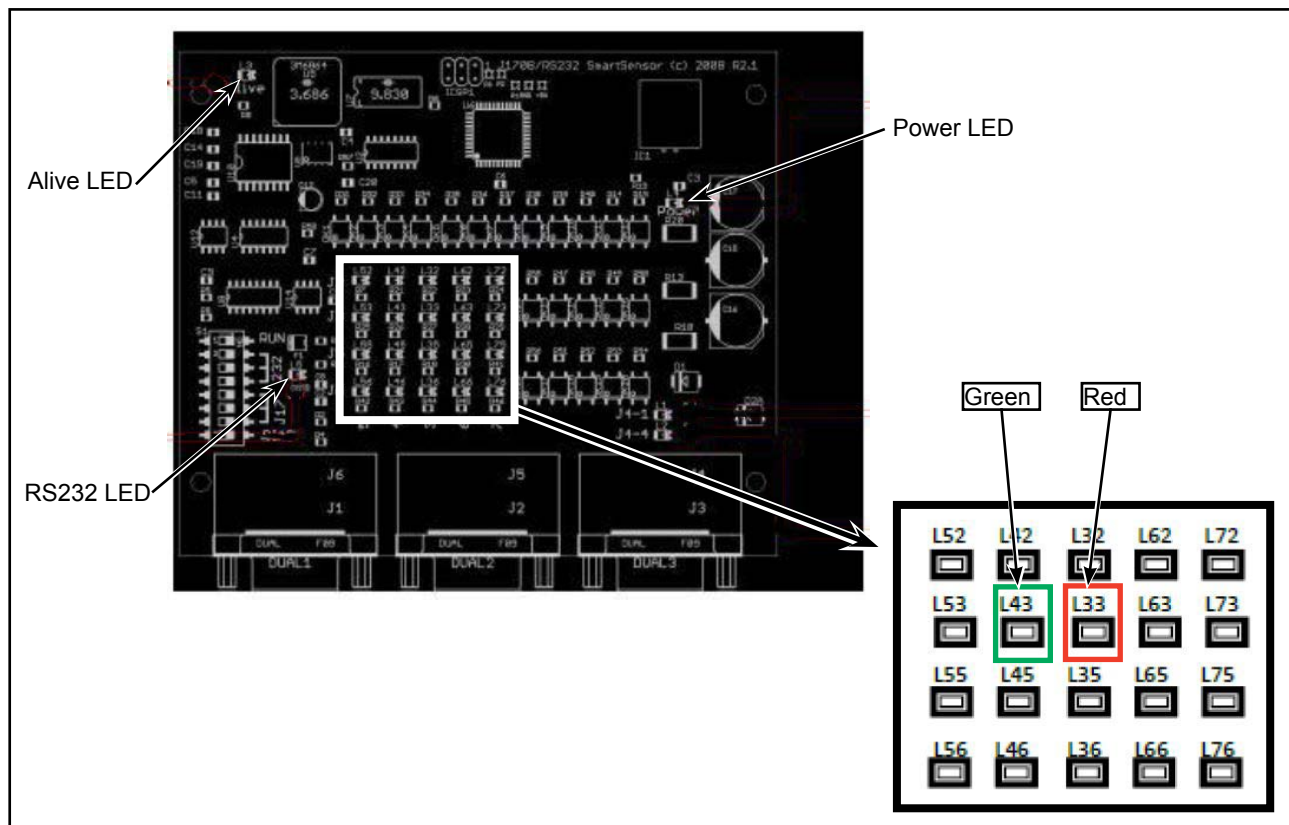
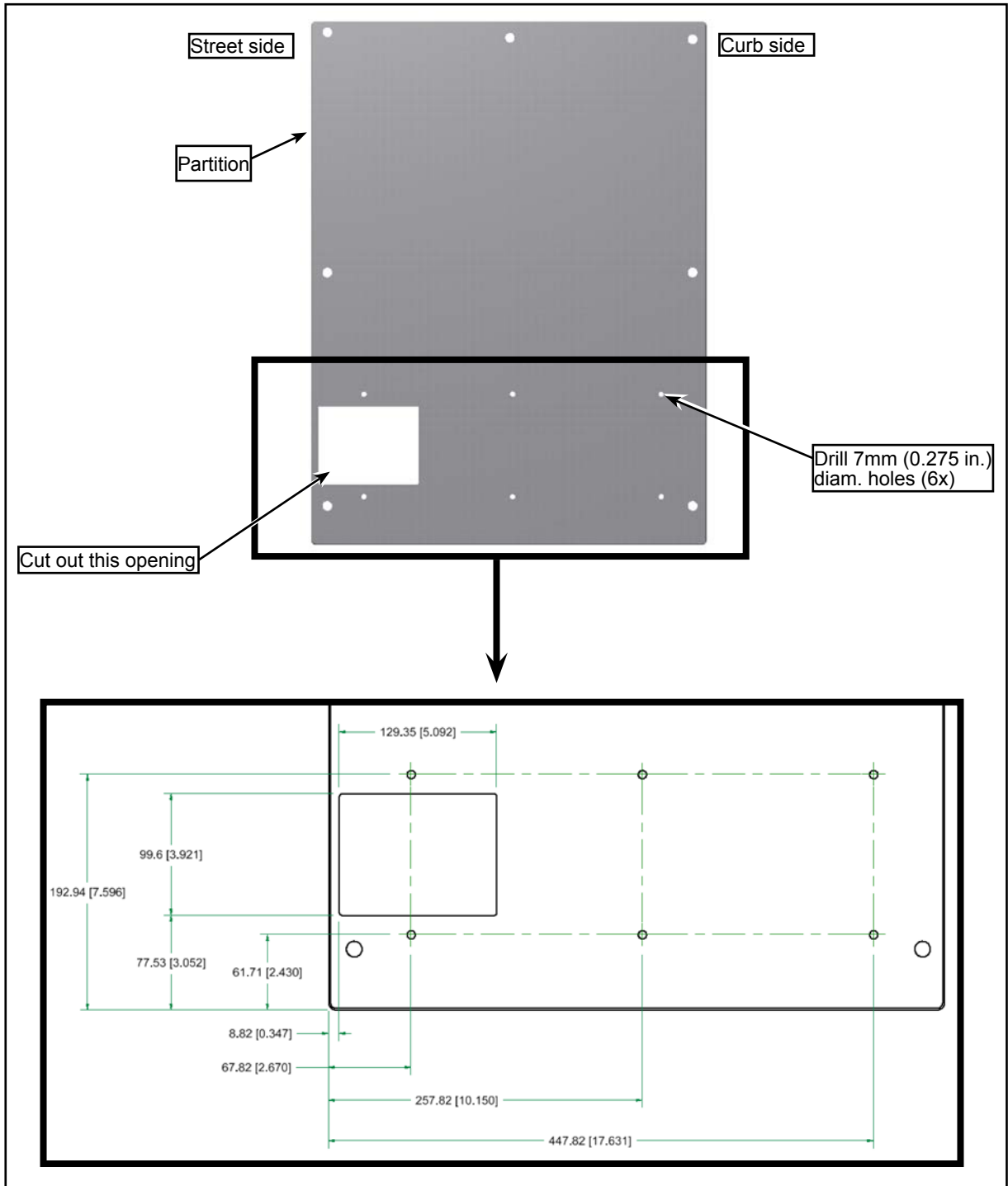


Figure 8 - Smart Sensor (CPU)/APC Analyzer LED Locations

- 1.17. Check that the **ALIVE LED** of the smart sensor is **ON** and flashing green. See Figure 8.
- 1.18. Check that the **RS232 LED** of the smart sensor is **OFF**. See Figure 8.
 - 1.18.1. Block the **FWD** (rear-facing) **OUTBOARD** sensor beam and check that the **L33 LED** of the smart sensor is solid **RED**. See Figure 8.
 - 1.18.1. Block the **FWD** (rear-facing) **INBOARD** sensor beam and check that the **L43 LED** of the smart sensor is solid **GREEN**. See Figure 8.
- 1.19. Close the ITS tray.
- 1.20. The vehicle may be returned to service. ❖

APPENDIX 1



Partition Drilling Layout. Measurements in mm (in.)