

Parking Brake Control

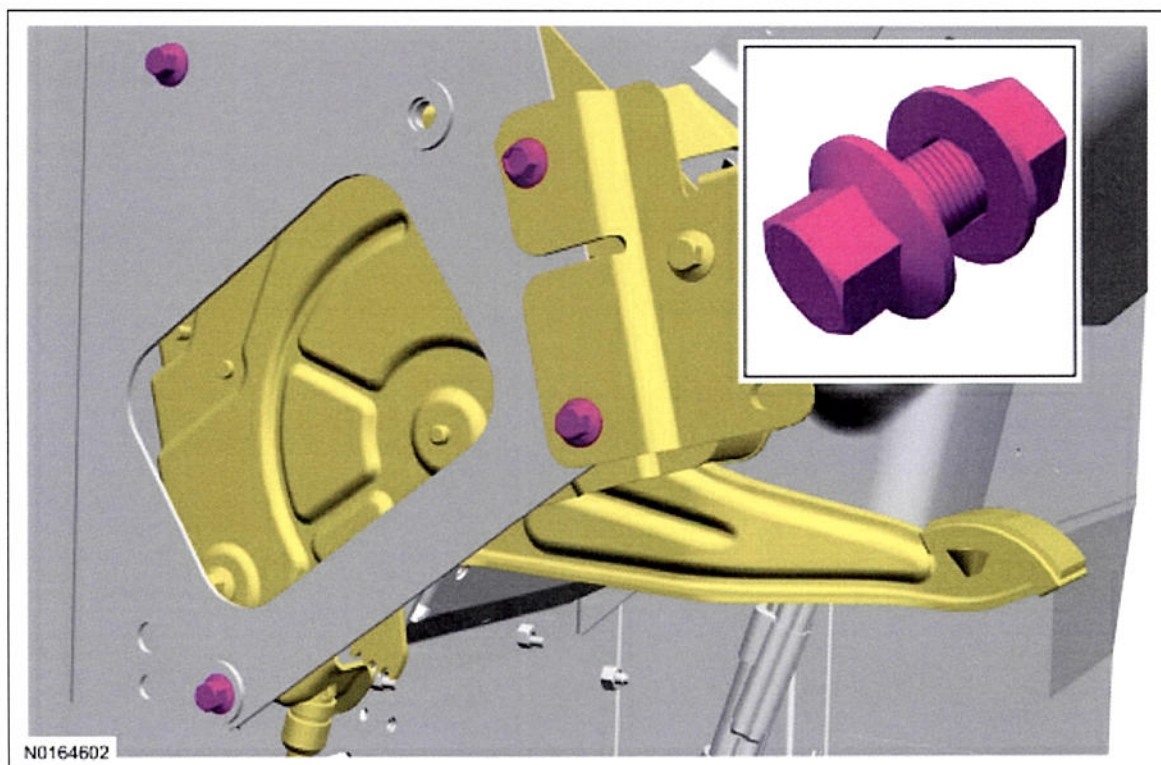
Removal

NOTE: Removal steps in this procedure may contain installation details.

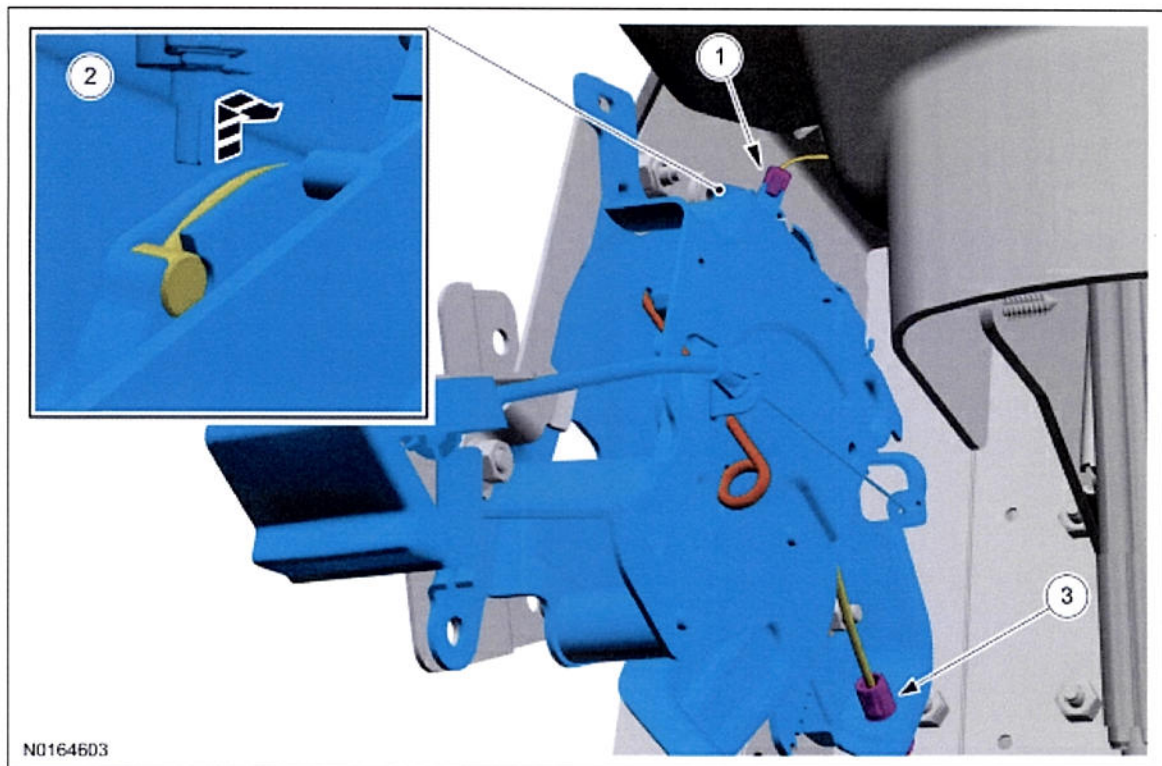
1. Release the tension on the parking brake control. Refer to [Parking Brake Cable Tension Release](#).

NOTE: Before removing bolts, make sure the parking brake control tension release pin is firmly and properly in position.

2. Remove the 4 parking brake control bolts and position for access to connections.
 - To install, tighten to 25 Nm (18 lb-ft).



3. Remove the parking brake control.
 1. Disconnect the parking brake switch electrical connector.
 2. Disconnect the parking brake cable from the parking brake control.
 3. Disconnect the parking brake cable housing from the parking brake control.



Installation

NOTE: After installation, no parking brake cable adjustment is necessary. The parking brake cable adjustment is automatic.

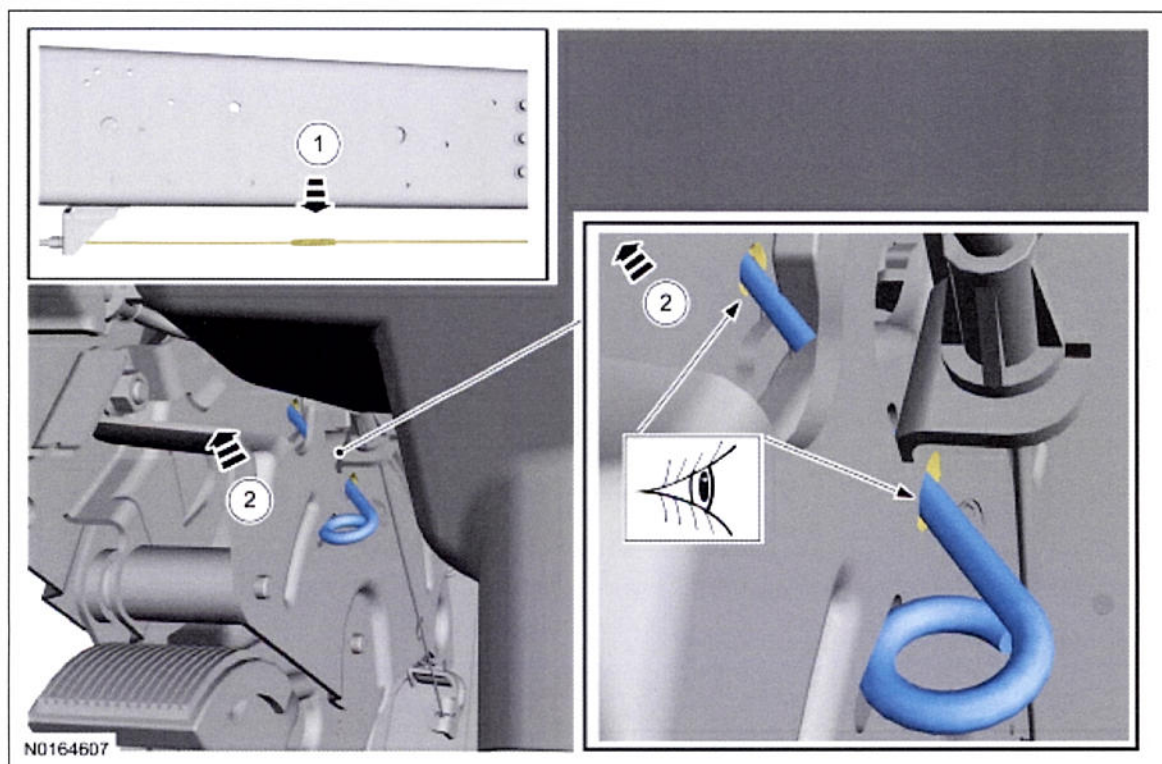
1. To install, reverse the removal procedure.
2. Transfer parts as necessary.

Copyright © 2015 Ford Motor Company

Parking Brake Cable Tension Release

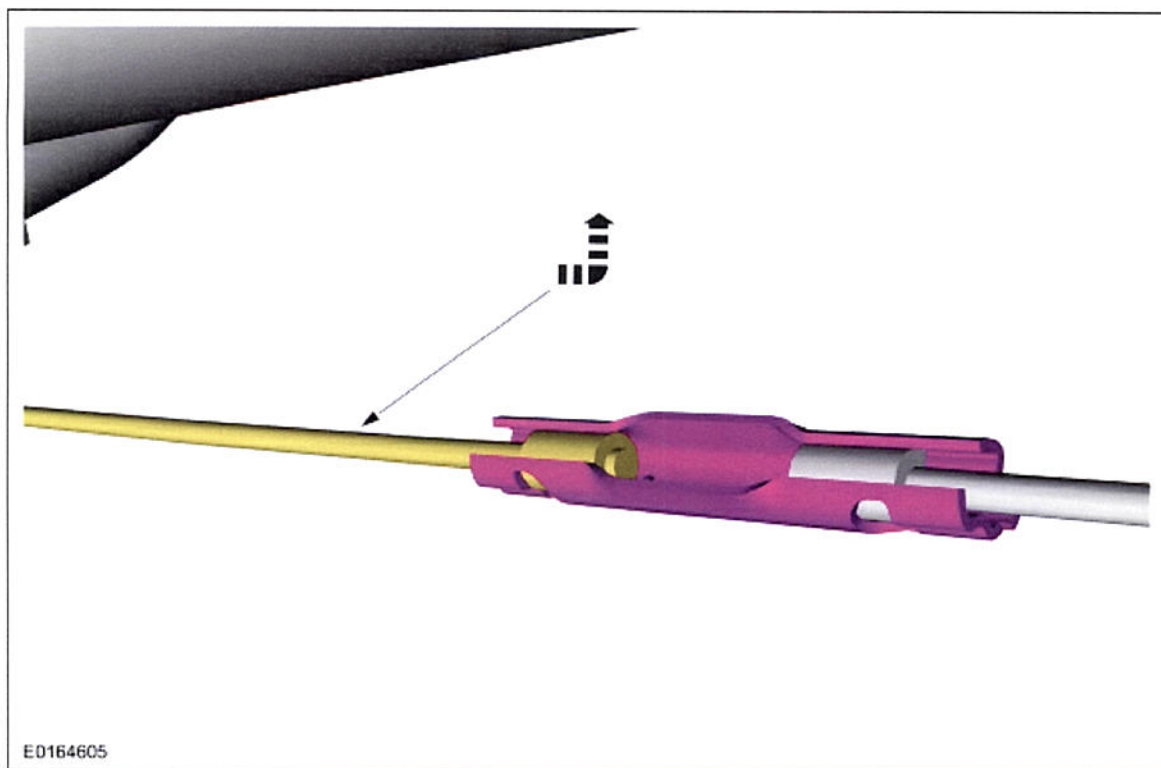
NOTE: This procedure is for foot actuated parking brake system only. The hand actuated parking brake system has no tension release procedure.

1. With the help of an assistant, position and hold the parking brake control sector in position.
 1. From under the vehicle with an assistant, pull down on the front cable at the cable-to-cable union until the parking brake control sector rotates to its stop.
 2. Insert a 4 mm (0.15 in) x 150 mm (5.9 in) retainer pin into the indicated holes to hold the spring tension on the control sector.



2. **NOTE:** When reloading tension, make sure that the cable-to-cable union is connected to the front and rear cable before removing the brake control retaining pin and that the cable tension is reloaded slowly.

Disconnect the front cable at the cable-to-cable union by pushing the cable into and out of the union.



Copyright © 2015 Ford Motor Company