

Job Code 9902266  
Flat Rate .025 hr

NHTSA#: 15V-692  
TC#: 2015-574

---

---

**REQUIRES PARTS TO BE ORDERED FROM Starcraft**

---

---

**Action Required**

Install shield to protect propane lines

**Models / Serial Numbers**

2016 Autumn Ridge Travel Trailers

G289 5050-5085

**Part Kit Contents**

**Note: Kit can only be ordered using the order form included with this bulletin.**

- 3 Screws hex head w/washer #14 x 1" self drilling with neo bond washer
- 3 Screws hex head #12 x 3/4" self drilling with neo bond washer
- 1 Metal shield



Metal shield and screws

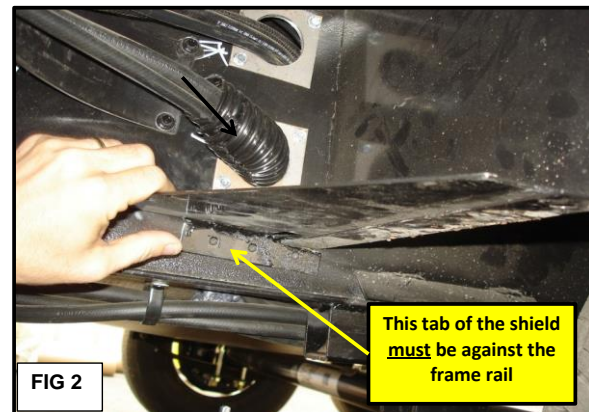


Screws: Black #14 (left), #12 (right)

**Shop Supplies / Tools**

Screw gun with #2 square drive bit  
5/16" socket bit for the screw gun  
3/8" socket bit for the screw gun (for black screws)

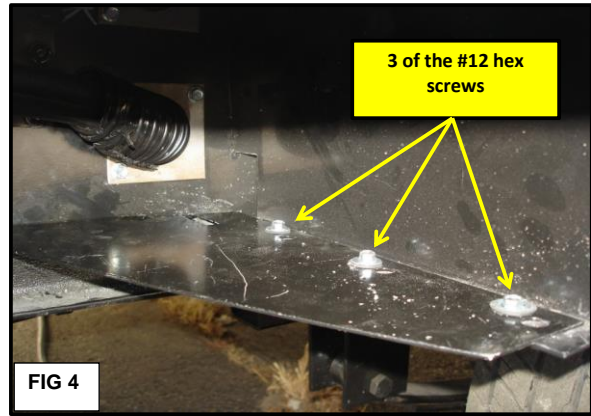
**INSTRUCTIONS**



1. This shield will be placed behind the rear tire on the Door Side of the trailer.

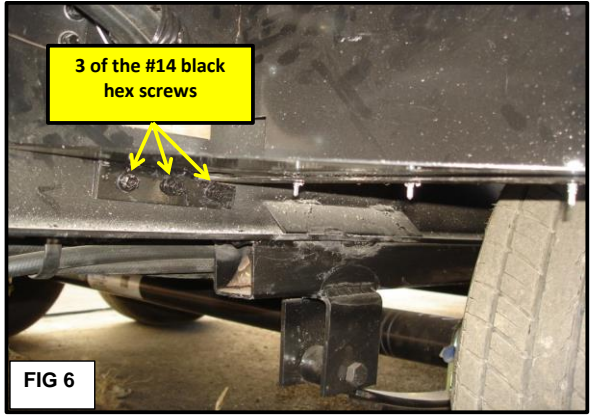
**Fig 1:** Lay the propane line shield on the lip of the wheel well shield behind the tire. (Refer to **Fig 4** also)

**Fig 2:** The tab on the end of the shield must go up against the frame rail where it will be secured with screws.



2. **Fig 3:** Use the 5/16 socket and install one of the #12 self drilling hex head screws through the hole in the propane shield. Drill the screw down through the lip of the wheel well shield.

**Fig 4:** Install three #12 hex head screws down through the wheel well lip.



3. **Fig 5:** Use the 3/8" socket and install three of the black #14 hex head self tapping screws into the end tab of the propane cable shield.

**Fig 6:** Shows the installed shield with the 6 self tapping screws.