



---

# RECALL CAMPAIGN BULLETIN

---

Reference:

NTB15-091

Date:

October 22, 2015

---

## VOLUNTARY SAFETY RECALL CAMPAIGN OCCUPANT CLASSIFICATION SYSTEM REPROGRAMMING

**CAMPAIGN ID #:** PC408

**APPLIED VEHICLES:** 2013 – 2014 Altima Sedan (L33)  
2013 – 2015 Pathfinder (R52)  
2013 – 2015 Sentra (B17)

**Check Service COMM to confirm campaign eligibility.**

### INTRODUCTION

Nissan is conducting a Voluntary Safety Recall Campaign on certain specific Nissan Vehicles, listed in APPLIED VEHICLES above, to reprogram the Occupant Classification System (OCS). This service will be performed at no charge to owners for parts or labor.

**SPECIAL NOTE:** Only specific vehicles identified in Service COMM (VIN specific) are subject to this campaign because they may have previously been serviced with an incorrect part. Other vehicles within the specified date range are not subject to this campaign.

### IDENTIFICATION NUMBER

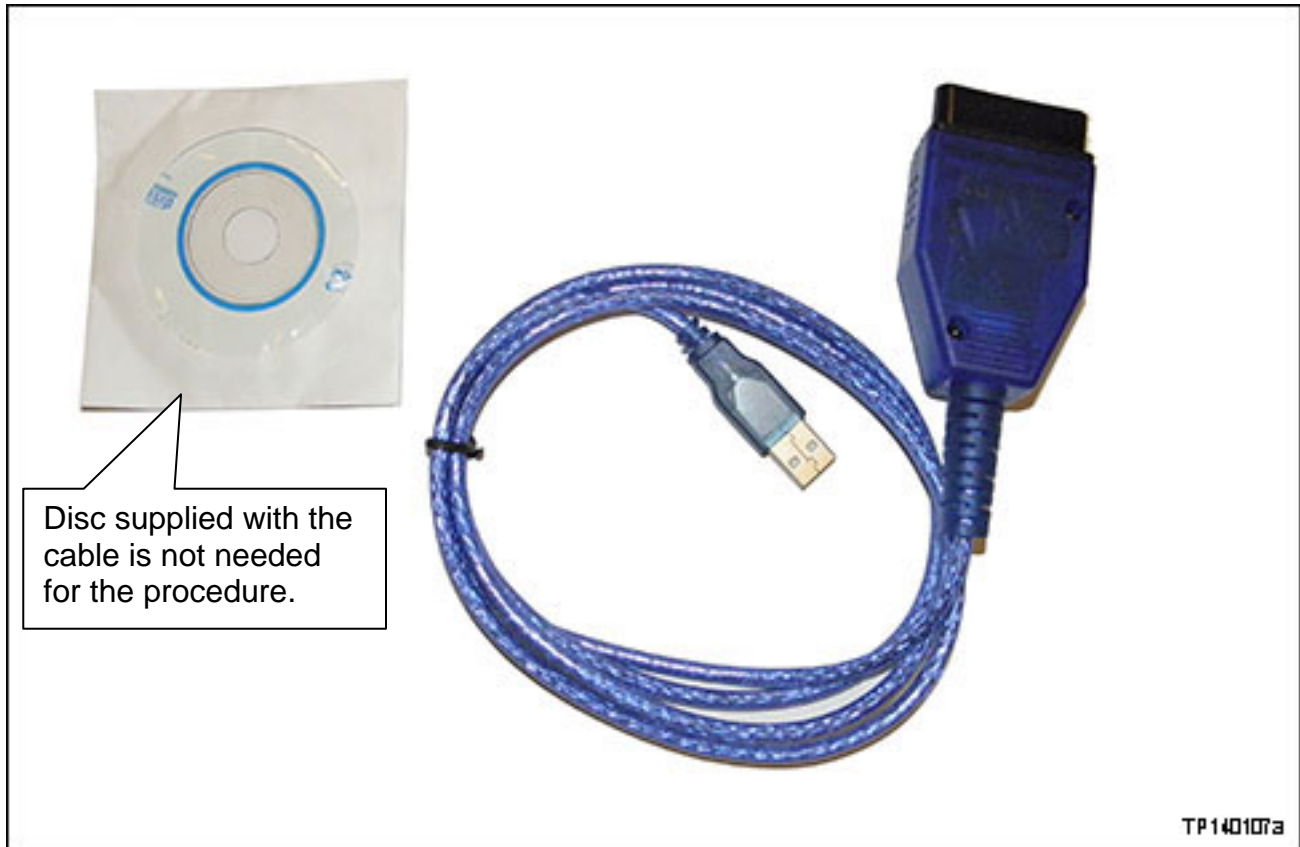
Nissan has assigned identification number PC408 to this campaign. This number must appear on all communications and documentation of any nature dealing with this campaign.

### DEALER RESPONSIBILITY

It is the dealer's responsibility to check Service COMM for the campaign status on each vehicle falling within the range of this voluntary safety recall campaign which for any reason enters the service department. This includes vehicles purchased from private parties or presented by transient (tourist) owners and vehicles in a dealer's inventory. **Federal law requires that new vehicles in dealer inventory which are the subject of a safety recall must be corrected prior to sale. Failure to do so can result in civil penalties by the National Highway Traffic Safety Administration.** While federal law applies only to new vehicles, Nissan strongly encourages dealers to correct any used vehicles in their inventory before they are retailed.

Nissan Bulletins are intended for use by qualified technicians, not 'do-it-yourselfers'. Qualified technicians are properly trained individuals who have the equipment, tools, safety instruction, and know-how to do a job properly and safely. NOTE: If you believe that a described condition may apply to a particular vehicle, DO NOT assume that it does. See your Nissan dealer to determine if this applies to your vehicle.

## REQUIRED SPECIAL TOOL J-51594 (OCS Reprogramming Cable)



- One J-51594 OCS reprogramming cable has been supplied to each dealer. Additional cables can be obtained from Tech-Mate at 1-800-662-2001.

## SERVICE PROCEDURE

### NOTE:

- In this Service Procedure, OCS is sometimes referred to as ODS.
- Your CONSULT PC is not required to perform this procedure; any computer (PC) with ASIST installed can be used.

1. Make sure ASIST has been synchronized to the current date and all updates have been installed.

**NOTE:** The PC automatically gets applicable reprogramming software during ASIST synchronization.

2. Install the driver for the J-51594 OCS reprogramming cable as follows:
  - a. Keep the PC connected to the internet.
  - b. Connect the J-51594 OCS reprogramming cable to the PC USB port.
  - c. Wait 1 minute, the drivers will install automatically.

**NOTE:** Steps 1 and 2 above are only required the first time this procedure is performed. It is recommended that they be performed at the beginning of each day to confirm you have the latest software installed in your PC.

3. Park the vehicle in a level area (transmission in Park and parking brake set).
4. Connect the J-51594 OCS reprogramming cable:
  - Connect to the vehicle's DLC connector and the PC USB port.
  - Make sure the cable is securely connected at both ends.
5. Prepare the vehicle for OCS Reprogramming as follows:
  - **No objects on the passenger seat.**
  - **No occupants in the vehicle – including the servicing technician.**
  - PC is outside of the vehicle on a suitable support.
    - Do not set the PC on the vehicle.
  - Do not touch the vehicle during the OCS Reprogramming.
  - Minimize vibrations near the vehicle.

6. Open ASIST.

7. Select **Specialty Tools**, then **OCS Reprogramming**.

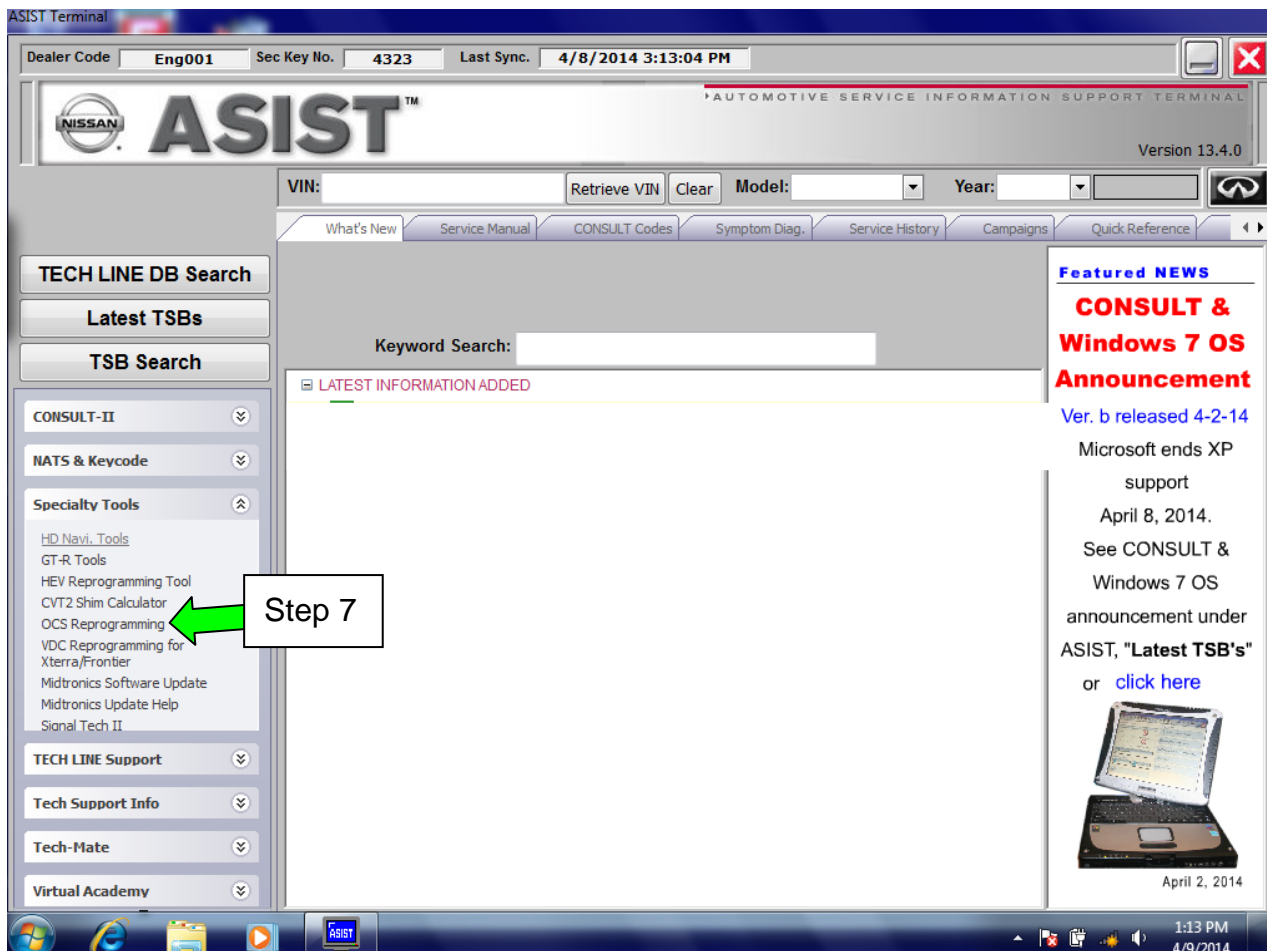


Figure 1

**NOTE:** If you get a black message screen as shown in Figure 2, this indicates that the reprogramming cable is not connected, or the cable driver did not install correctly.

- Close ODS Repro.
- Close ASIST.
- Start over from step 1.

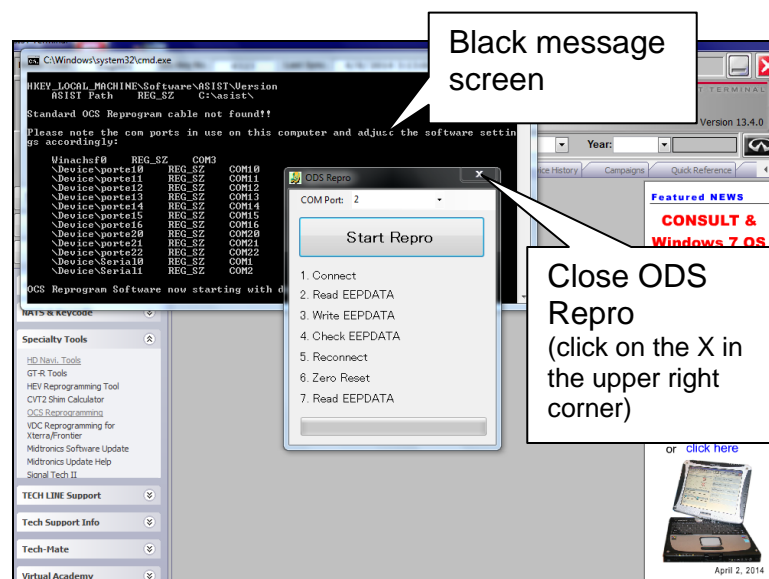


Figure 2

8. Select **Start Repro.**

**NOTE:** If the error message “an error occurred on connection” displays:

- a. Disconnect the J-51594 OCS reprogramming cable, both ends.
- b. Reconnect the cable; make sure it is securely connected at both ends.

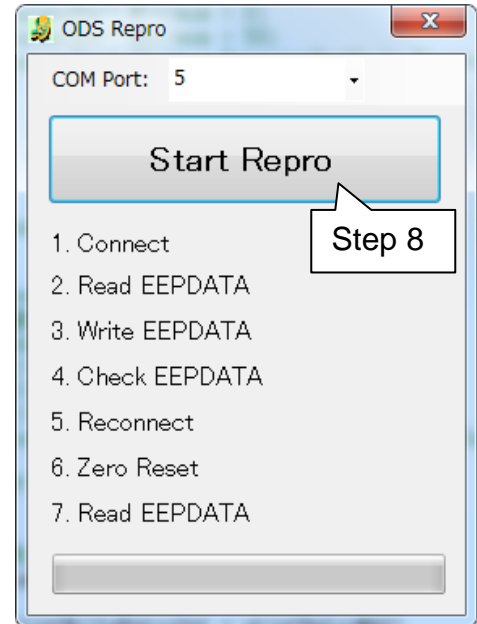


Figure 3

9. Turn the ignition ON (engine OFF / not Ready).

10. Select **OK.**

- **After selecting OK in Figure 4, the OCS reprogramming will start.**

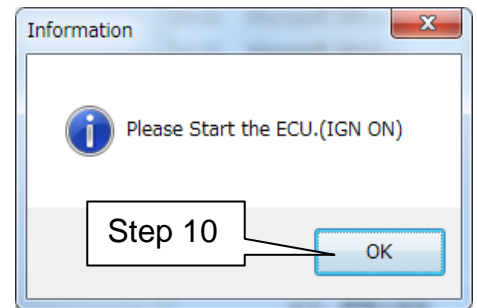


Figure 4

- Items 1 through 4 will likely complete quickly.
- If the OCS reprogramming stops (displays NG) at item 1,2,3 or 4, refer to Figures 10 through 13 on pages 8 and 9.

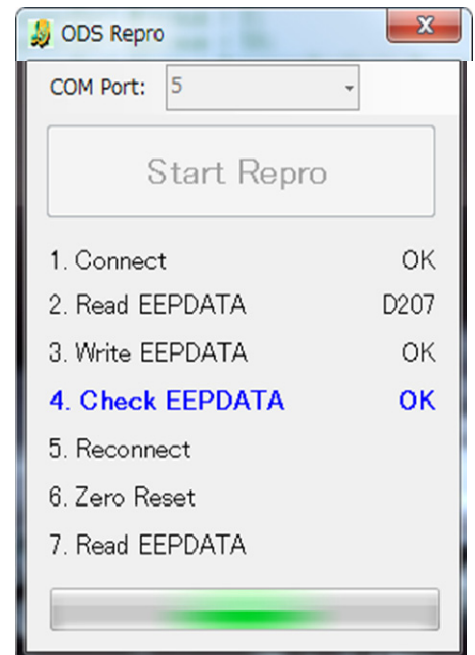


Figure 5

11. Cycle the ignition OFF > ON.

12. Select **OK**.

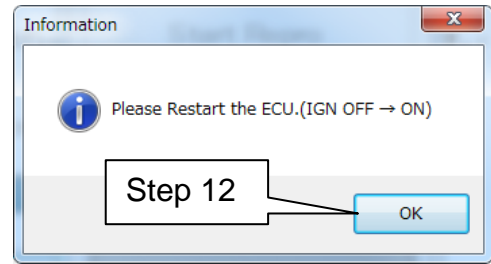


Figure 6

- After selecting OK in Figure 6, the OCS reprogramming will likely complete items 5 through 7 quickly (see “Complete” screen, Figure 8 below).
- If the OCS reprogramming stops (displays NG) at item 5, 6 or 7, refer to Figures 13 through 15 on pages 10 and 11.

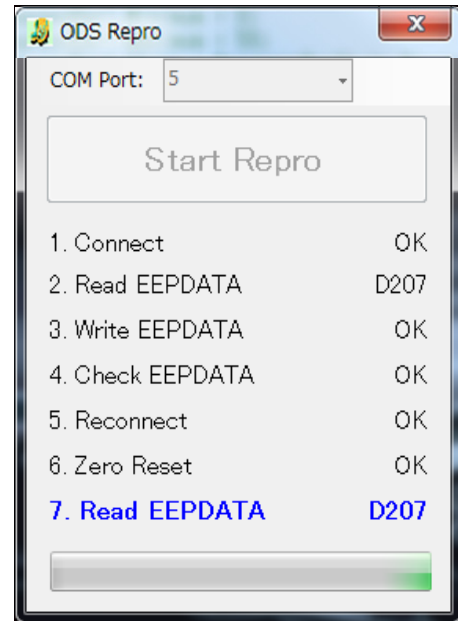


Figure 7

13 When this screen displays (Figure 8), OCS reprogramming is complete.

14. Select **OK**.

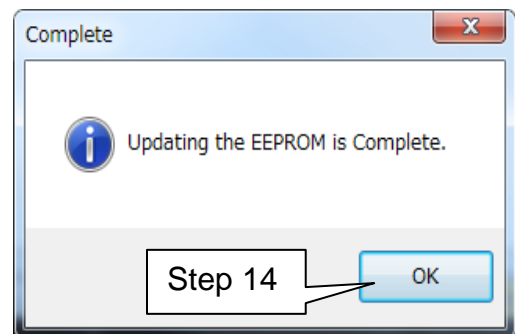


Figure 8

15. Close the program (click on the red X in the upper right corner).

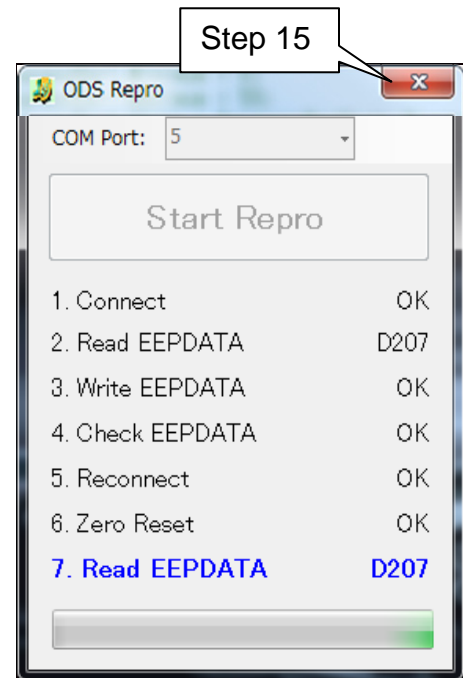


Figure 9

16. Turn the ignition OFF.

17. Disconnect the J-51594 OCS reprogramming cable.

## OCS Reprogramming is Complete

### NOTE:

- Zero Point Reset was included in the reprogramming – it is not necessary to perform as a separate step.
- Figures 10 through 16 on pages 8 through 11 are provided as reference if the OCS reprogramming stops (displays NG) at one of the items (1-7).

## APPENDIX

- #1 - If Connect indicates NG:
  - a. Click OK on the accompanying error message.
  - b. Turn the ignition OFF.
  - c. Close ODS Repro (click on the red X in the upper right corner).
  - d. Restart from step 1 on page 3.

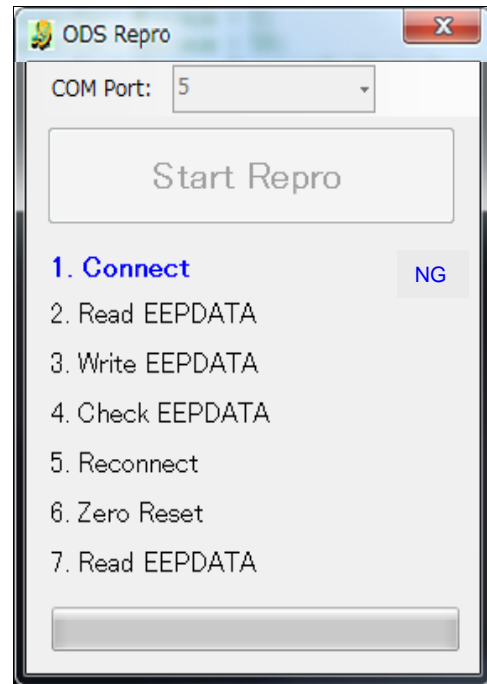


Figure 10

- #2 - If Read EEPROMDATA indicates NG:
  - a. Click OK on the accompanying error message.
  - b. Turn the ignition OFF.
  - c. Close ODS Repro (click on the red X in the upper right corner).
  - d. Restart from step 1 on page 3.

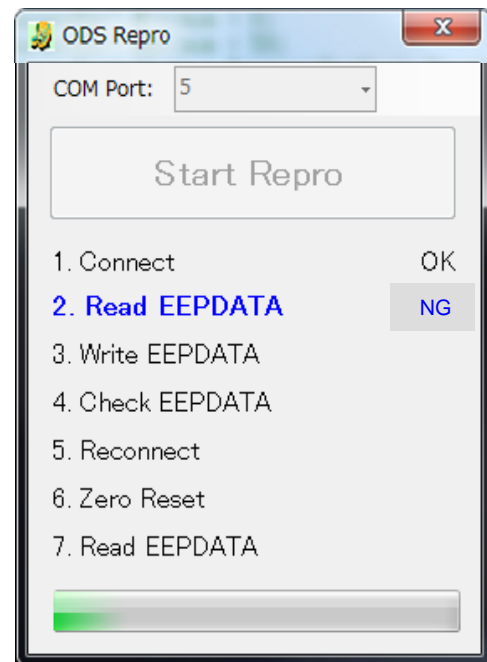


Figure 11



- #3 - If Write EEPROMDATA indicates NG:
  - a. Click OK on the accompanying error message.
  - b. Turn the ignition OFF.
  - c. Close ODS Repro (click on the red X in the upper right corner).
  - d. Restart from step 1 on page 3.

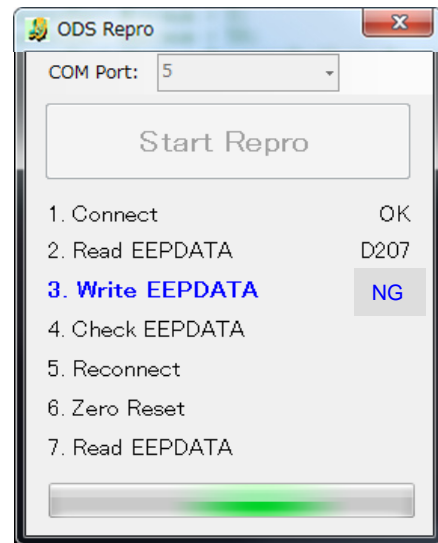


Figure 12

- #4 - If Check EEPROMDATA indicates NG:
  - a. Click OK on the accompanying error message.
  - b. Turn the ignition OFF.
  - c. Close ODS Repro (click on the red X in the upper right corner).
  - d. Restart from step 1 on page 3.

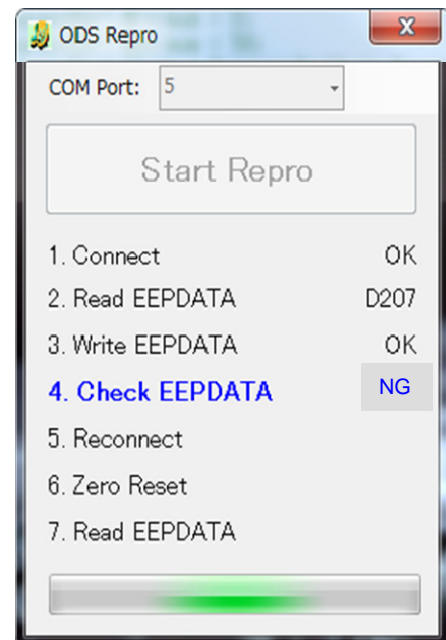


Figure 13

- #5 - If Reconnect indicates NG:
  - a. Click OK on the accompanying error message.
  - b. Turn the ignition OFF.
  - c. Close ODS Repro (click on the red X in the upper right corner).
  - d. Restart from step 1 on page 3.

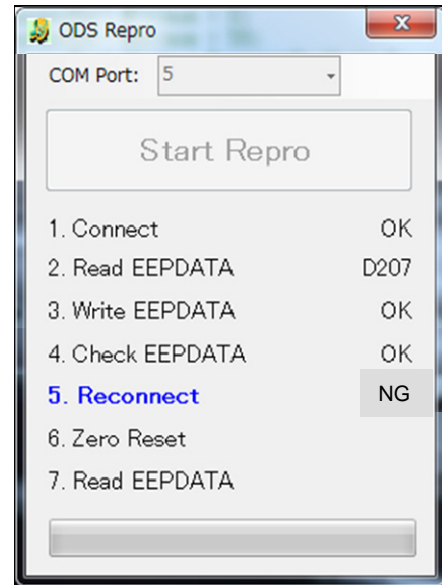


Figure 14

- #6 - If Zero Reset indicates NG:
  - a. Click OK on the accompanying error message.
  - b. Cycle the ignition OFF > ON.
    - If needed, retry ignition OFF > ON 5 times.
  - c. If Zero Reset still indicates NG, close ODS Repro (click on the red X in the upper right corner), and restart from step 1 on page 3.

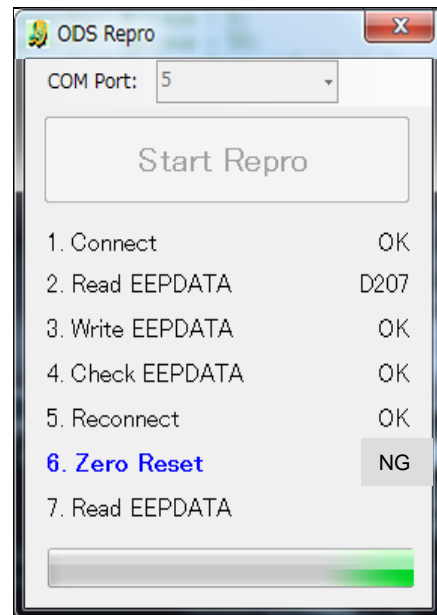


Figure 15

- #7 - If Read EEPROMDATA indicates NG:
  - a. Click OK on the accompanying error message.
  - b. Turn the ignition OFF.
  - c. Close ODS Repro (click on the red X in the upper right corner).
  - d. Restart from step 1 on page 3.

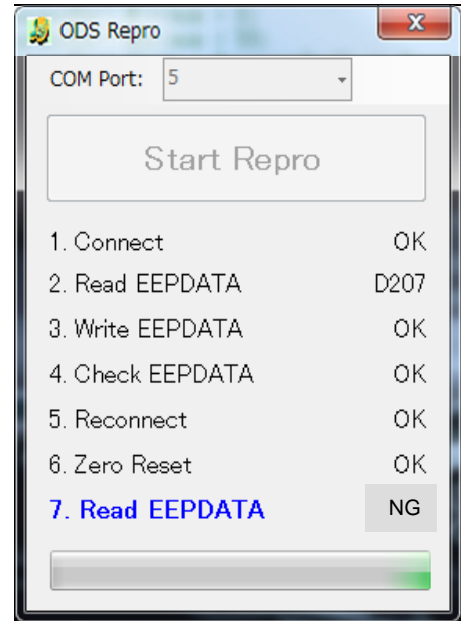


Figure 16

## CLAIMS INFORMATION

CAMPAIGN (“CM”) I.D.	DESCRIPTION	OP CODE	FRT
PC408	Reprogram Occupant Classification System	PC4080	0.2 hrs

