



Recall Bulletin

PRODUCT SAFETY RECALL

SUBJECT: Front Seat Side Impact Airbag Module

MODELS: 2015 Buick LaCrosse
2015 Cadillac XTS, XTS Professional
2015 Chevrolet Camaro, Equinox, Malibu
2015 GMC Terrain

It is a violation of Federal law for a dealer to deliver a new motor vehicle or any new or used item of motor vehicle equipment (including a tire) covered by this notification under a sale or lease until the defect or noncompliance is remedied.

All involved vehicles that are in dealer inventory must be held and not delivered to customers, dealer traded, or used for demonstration purposes until the repair contained in this bulletin has been performed on the vehicle.

CONDITION

GM has decided that a defect that relates to motor vehicle safety exists in certain 2015 Buick LaCrosse, Cadillac XTS, XTS Professional, Chevrolet Camaro, Equinox, Malibu, and GMC Terrain vehicles. One of the front seat-mounted side impact airbag modules in these vehicles may contain a defect which, in the event of an airbag deployment, can cause inflator components to separate and be propelled into the interior compartment, possibly striking occupants. It is also possible that the airbag may inflate only partially, or not at all, in the event of a crash. If the airbag components separate and are propelled into the interior compartment during deployment in a crash, or the airbag does not inflate, there may be an increased risk of injury to the occupants.

CORRECTION

Dealers are to replace the affected front seat side impact airbag module as identified by the VIN table in the section below.

VEHICLES INVOLVED

All involved vehicles are identified by Vehicle Identification Number on the Investigate Vehicle History screen in GM Global Warranty Management system. Dealership service personnel should always check this site to confirm vehicle involvement prior to beginning any required inspections and/or repairs. It is important to routinely use this tool to verify eligibility because not all similar vehicles may be involved regardless of description or option content.

For dealers with involved vehicles, a listing with involved vehicles containing the complete vehicle identification number, customer name, and address information has been prepared and will be provided to US and Canadian dealers through the GM GlobalConnect Recall Reports, or sent directly to export dealers. Dealers will not have a report available if they have no involved vehicles currently assigned.

The listing may contain customer names and addresses obtained from Motor Vehicle Registration Records. The use of such motor vehicle registration data for any purpose other than follow-up necessary to complete this recall is a violation of law in several states/provinces/countries. Accordingly, you are urged to limit the use of this report to the follow-up necessary to complete this recall.

FRONT SEAT SIDE IMPACT AIRBAG MODULE LOCATION TABLE

After confirming vehicle involvement, use the table provided below to identify which front seat side impact airbag module requires replacement. The table is sorted by the last eight characters of the Vehicle Identification Number (VIN) which is provided in the first column. The second column provides all 17 characters of the VIN for reference. The third column identifies which front seat side impact airbag module needs to be replaced. The designation “DS” means replace the driver side module and the designation “PS” means replace the passenger side module.

REPLACE FRONT SEAT SIDE IMPACT AIRBAG MODULE IDENTIFIED IN THIS TABLE
DS = DRIVER SIDE PS = PASSENGER SIDE

VIN – LAST 8	VIN - FULL	DS / PS
F1143801	2GNALBEK4F1143801	PS
F1143844	2GNALBEK0F1143844	PS
F1143913	2GNALBEK4F1143913	PS
F1143951	2GNALBEK1F1143951	PS
F1144975	2GNALBEK9F1144975	PS
F1145031	2GNALAEKXF1145031	PS
F1145629	2GNALCEK9F1145629	PS
F1145743	2GNALBEK4F1145743	PS
F1145784	2GNALBEK7F1145784	PS
F1145789	2GNALBEK6F1145789	PS
F1145813	2GNALBEKXF1145813	PS
F1145825	2GNALBEK6F1145825	PS
F1145831	2GNALAEK9F1145831	PS
F1145874	2GNALBEK8F1145874	PS
F1145900	2GNALAEK2F1145900	PS
F1145901	2GNALBEK7F1145901	PS
F1145912	2GNALAEK9F1145912	PS
F1146008	2GNALDEK7F1146008	PS
F1146097	2GNALBEK4F1146097	PS
F1146204	2GNALCEK4F1146204	PS
F1148183	2GNALBEK7F1148183	PS
F6286934	2GNFLGE35F6286934	PS
F6287526	2GNALAEK8F6287526	DS
F6288623	2GNALCEK6F6288623	PS
F6288699	2GKFL8E35F6288699	PS
F6288709	2GNALDEK8F6288709	PS
F6288806	2GKFLZE35F6288806	PS

VIN – LAST 8	VIN - FULL	DS / PS
F6288812	2GNALCEK9F6288812	PS
F6288859	2GNALBEKXF6288859	PS
F6288921	2GNALBEK0F6288921	PS
F6288975	2GNALDEK7F6288975	PS
F6288996	2GKFLZE33F6288996	PS
F6289049	2GNALDEK8F6289049	PS
F6289078	2GNALBEK9F6289078	PS
F6289130	2GNFLGEK3F6289130	PS
F6289147	2GNFLGEK9F6289147	PS
F6289203	2GNALBEK8F6289203	PS
F6289495	2GNFLCE38F6289495	PS
F6289614	2GKALREKXF6289614	PS
F6289622	2GKALREK9F6289622	PS
F6289644	2GNALBEK5F6289644	PS
F6289726	2GKALREKXF6289726	PS
F6289745	2GKALSEK4F6289745	PS
F6289755	2GNALBEK3F6289755	PS
F6290077	2GNFLFEK5F6290077	DS
F6290692	2GKFL8E31F6290692	PS
F6291128	2GKALREK0F6291128	PS
F6291288	2GKFLYE3XF6291288	PS
F6291570	2GNALBEK1F6291570	PS
F6292186	2GNALBEK5F6292186	PS
F6292529	2GNALBEK9F6292529	PS
F6292647	2GNALBEK4F6292647	PS
F6292845	2GKALMEK7F6292845	PS
F6292902	2GKFLZE3XF6292902	PS

VIN – LAST 8	VIN - FULL	DS / PS
F6292934	2GKALMEK6F6292934	PS
F6292976	2GKALMEK0F6292976	PS
F6292986	2GNLFEK8F6292986	PS
F6293005	2GNALBEK2F6293005	PS
F6293070	2GNALBEK2F6293070	PS
F6293222	2GKALSEK3F6293222	PS
F6293224	2GNFLHE31F6293224	PS
F6293256	2GNLFE38F6293256	PS
F6293259	2GKFLYE32F6293259	PS
F6293264	2GKFLXEK4F6293264	PS
F6293287	2GKALREK8F6293287	PS
F6293307	2GKALSEK0F6293307	PS
F6293313	2GNALBEK2F6293313	PS
F6293398	2GNLFE36F6293398	PS
F6293499	2GNLFEK2F6293499	PS
F6293533	2GNFLEEK6F6293533	PS
F6293554	2GNALBEK2F6293554	PS
F6293596	2GNALBEK7F6293596	PS
F6293614	2GKFLWEK2F6293614	PS
F6293790	2GNALBEK3F6293790	PS
F6293850	2GNALBEK6F6293850	PS
F6293869	2GNALLEK8F6293869	PS
F6293897	2GNALAEK7F6293897	PS
F6294472	2GNALAEK2F6294472	PS
F6294695	2GNFLEEK4F6294695	PS
F6294956	2GNALLEK8F6294956	PS
F6295564	2GNALBEK4F6295564	PS
F6295573	2GNLFEK9F6295573	PS
F6296170	2GNALCEK2F6296170	PS
F6296171	2GNALBEK1F6296171	PS
F6296227	2GKALUEK1F6296227	PS
F6296229	2GKALMEK5F6296229	PS
F6296230	2GNFLHE30F6296230	PS
F6296242	2GKFLVEK3F6296242	PS
F6296268	2GNALCEK8F6296268	PS
F6296302	2GKALMEK0F6296302	PS
F6296336	2GKFLXEK7F6296336	PS
F6296342	2GKALNEK4F6296342	PS
F6296345	2GKALMEK7F6296345	PS
F6296360	2GKALMEK3F6296360	PS
F6296370	2GNALAEK4F6296370	PS
F6296382	2GNALAEK0F6296382	PS
F6296420	2GNLFE3XF6296420	PS
F6296438	2GNLFEK8F6296438	PS

VIN – LAST 8	VIN - FULL	DS / PS
F6296459	2GKFLXEK1F6296459	PS
F6296466	2GKFLXEK9F6296466	PS
F6296481	2GKALUEK4F6296481	PS
F6296548	2GNALBEK0F6296548	PS
F6296644	2GNALBEK7F6296644	PS
F6296669	2GNALBEK1F6296669	PS
F6296682	2GNFLGEK0F6296682	PS
F6296707	2GNALBEK5F6296707	PS
F6296772	2GNALBEK5F6296772	PS
F6296775	2GKALSEK4F6296775	PS
F6296821	2GNALBEK3F6296821	PS
F6296832	2GKFLVEK2F6296832	PS
F6296840	2GNFLGEK3F6296840	PS
F6296843	2GKFLZE37F6296843	PS
F6296899	2GKFLXEK7F6296899	PS
F6296905	2GNFLGEK5F6296905	PS
F6296947	2GNLFEK7F6296947	PS
F6296952	2GNFLHEK6F6296952	PS
F6296980	2GNALBEK1F6296980	PS
F6297059	2GNFLEEK2F6297059	PS
F6297087	2GKALMEK5F6297087	PS
F6297090	2GNALBEK6F6297090	PS
F6297098	2GNALBEK0F6297098	PS
F6297103	2GNALAEK8F6297103	PS
F6297137	2GNALBEK6F6297137	PS
F6297150	2GNALBEK9F6297150	PS
F6297207	2GKALMEK0F6297207	PS
F6297242	2GKFLSE39F6297242	PS
F6297245	2GNALBEK9F6297245	PS
F6297269	2GKALMEK0F6297269	PS
F6297286	2GNFLHE3XF6297286	PS
F6299512	2GNLFEK9F6299512	PS
F6299515	2GNALAEK8F6299515	DS
F6300706	2GKFLWEK0F6300706	DS
F9215459	2G1FB1E39F9215459	PS
F9215507	2G1FB1E35F9215507	PS
F9215545	2G1FH1EJ6F9215545	PS
F9215614	2G1FD1E33F9215614	PS
F9215618	2G1FB1E33F9215618	PS
F9215630	2G1FB1E34F9215630	PS
F9215642	2G1FD1E38F9215642	PS
F9215644	2G1FD1E31F9215644	PS
F9215652	2G1FD1E30F9215652	PS
F9215665	2G1FB1E31F9215665	PS

VIN – LAST 8	VIN - FULL	DS / PS
F9215675	2G1FB1E34F9215675	PS
F9215696	2G1FF1E36F9215696	PS
F9215702	2G1FB1E33F9215702	PS
F9215717	2G1F91E30F9215717	PS
F9215735	2G1FF1E31F9215735	PS
F9215749	2G1FF1E31F9215749	PS
F9215761	2G1FD1E35F9215761	PS
F9215797	2G1FD1E34F9215797	PS
F9215799	2G1FF1E35F9215799	PS
F9215802	2G1FK1EJ9F9215802	PS
F9215835	2G1FB1E30F9215835	PS
F9215880	2G1FD1E32F9215880	PS
F9215892	2G1FB1E31F9215892	PS
F9215897	2G1FB1E30F9215897	PS
F9215898	2G1FB1E32F9215898	PS
F9215915	2G1FK1EJ0F9215915	PS
F9215952	2G1F91E3XF9215952	PS
F9216081	2G1FK1EJ4F9216081	PS
F9216143	2G1FH1EJ2F9216143	PS
F9216178	2G1FB1E36F9216178	PS
F9216197	2G1FD1E37F9216197	PS
F9216235	2G1FF1E38F9216235	PS
F9216269	2G1FJ1EW2F9216269	PS
F9216361	2G1FD1E35F9216361	PS
F9216382	2G1FK1EJ7F9216382	PS
F9218738	2G61M5S33F9218738	PS
F9218793	2G61M5S30F9218793	PS
F9218796	2G61N5S3XF9218796	PS
F9218897	2G61N5S35F9218897	PS
F9219127	2G61M5S31F9219127	PS
F9219290	2G61P5S32F9219290	PS
F9219804	2G61W5S89F9219804	PS
F9219900	2G61N5S36F9219900	PS
F9219961	2G61R5S39F9219961	PS
F9219964	2G61N5S3XF9219964	PS
F9220070	2G61P5S34F9220070	PS
F9220288	2G61N5S31F9220288	PS
F9220351	2G61P5S31F9220351	PS
F9220389	2G61M5S33F9220389	PS
F9220426	2G61T5S31F9220426	PS
F9220429	2G61N5S34F9220429	PS
F9220451	2G61L5S30F9220451	PS
F9220465	2G61R5S32F9220465	PS
F9220523	2G61N5S37F9220523	PS

VIN – LAST 8	VIN - FULL	DS / PS
F9220531	2G61M5S32F9220531	PS
F9220556	2G61M5S37F9220556	PS
F9220572	2G61M5S35F9220572	PS
F9220581	2G61M5S36F9220581	PS
F9220587	2G61W5S8XF9220587	PS
F9220666	2G61M5S33F9220666	PS
F9220746	2G61N5S35F9220746	PS
F9220998	2G61S5S39F9220998	PS
F9221012	2G61M5S35F9221012	PS
F9221112	2G61N5S32F9221112	PS
F9221344	2G61N5S31F9221344	PS
F9221498	2G61V5S81F9221498	PS
F9222216	2G1FD1E34F9222216	DS
F9222228	2G1FD1E30F9222228	DS
F9222260	2G1FD1E37F9222260	DS
F9222283	2G1FH1EJ4F9222283	DS
F9222342	2G1FF1E36F9222342	DS
F9222467	2G1FK1EJ1F9222467	DS
F9222638	2G1FD1E38F9222638	DS
F9222650	2G1FF1E36F9222650	DS
F9222668	2G1FD1E36F9222668	DS
F9222675	2G1FF1E30F9222675	DS
F9222676	2G1FB1E38F9222676	DS
F9222680	2G1FF1E34F9222680	DS
F9222694	2G1FA1E36F9222694	DS
F9222706	2G1FK1EJ4F9222706	DS
F9222732	2G1FJ1EW7F9222732	DS
F9222778	2G61N5S36F9222778	PS
F9222782	2G1FD1E34F9222782	DS
F9222783	2G1FF1E33F9222783	DS
F9222810	2G61N5S39F9222810	PS
F9222836	2G1F91E3XF9222836	DS
F9222837	2G61M5S33F9222837	PS
F9222840	2G61N5S37F9222840	PS
F9222854	2G1FF1E30F9222854	DS
F9222856	2G1FF1E34F9222856	DS
F9222864	2G1FD1E36F9222864	DS
F9222887	2G1FB1E3XF9222887	DS
F9222921	2G1FH1EJXF9222921	DS
F9222922	2G61M5S35F9222922	PS
F9222953	2G1FB1E38F9222953	DS
F9222963	2G1FB1E30F9222963	DS
F9222988	2G1FB1E35F9222988	DS
F9223017	2G1FK1EJ8F9223017	DS

VIN – LAST 8	VIN - FULL	DS / PS
F9223024	2G1FK1EJ5F9223024	DS
F9223032	2G61N5S33F9223032	DS
F9223037	2G1FB1E31F9223037	DS
F9223057	2G61M5S34F9223057	DS
F9223061	2G61M5S36F9223061	DS
F9223062	2G1FC1E34F9223062	DS
F9223122	2G1FF1E38F9223122	DS
F9223124	2G1FK1EJ9F9223124	DS
F9223134	2G1FG1EW5F9223134	DS
F9223151	2G1FA1E36F9223151	DS
F9223218	2G1FF1E3XF9223218	DS
F9223226	2G61W5S84F9223226	PS
F9223274	2G61N5S35F9223274	DS
F9223333	2G61N5S36F9223333	DS
F9223421	2G61M5S3XF9223421	PS
F9223499	2G61S5S36F9223499	DS
F9223507	2G61M5S39F9223507	DS
F9223728	2G61U5S33F9223728	DS
F9223749	2G61M5S30F9223749	DS
F9223824	2G61M5S3XF9223824	DS
F9224040	2G61N5S37F9224040	DS
F9224101	2G61N5S31F9224101	DS
F9224146	2G61M5S38F9224146	DS
F9224208	2G61N5S38F9224208	DS
F9224211	2G61M5S34F9224211	DS
F9224289	2G61N5S31F9224289	DS
F9224301	2G61M5S35F9224301	DS
F9224336	2G61S5S35F9224336	DS
F9224383	2G61M5S30F9224383	DS
F9224457	2G61W5S86F9224457	DS
F9224593	2G61N5S34F9224593	DS
F9225498	2G61M5S30F9225498	DS
F9225654	2G61M5S3XF9225654	DS
F9225853	2G1FF1E32F9225853	DS
F9298983	2G1FK1EJ3F9298983	DS
F9301675	2G1FG1EW2F9301675	PS
F9301950	2G1FJ1EW7F9301950	DS
F9302470	2G1FJ1EW9F9302470	DS
F9303143	2G1FK1EJ8F9303143	DS
F9303357	2G1FJ1EW7F9303357	DS
F9303485	2G1FJ1EW5F9303485	DS
F9303678	2G1FJ1EW5F9303678	DS
F9303907	2G1FJ1EW5F9303907	DS
F9304668	2G1FJ1EW7F9304668	DS

VIN – LAST 8	VIN - FULL	DS / PS
F9305227	2G1FJ1EW4F9305227	DS
F9306057	2G1FJ1EWXF9306057	DS
F9306458	2G1FJ1EW6F9306458	DS
F9307017	2G1FJ1EW3F9307017	DS
F9500381	2GEXG7U39F9500381	PS
F9500383	2GEXG7U32F9500383	PS
F9500387	2GEXG7U3XF9500387	PS
F9500389	2GEXG7U33F9500389	DS
F9550265	2GEXG6U31F9550265	DS
F9550266	2GEXG6U33F9550266	DS
F9801745	2G1FM1EP8F9801745	DS
F9801761	2G1FL1EP2F9801761	DS
F9801764	2G1FL1EP8F9801764	DS
F9801784	2G1FL1EP3F9801784	DS
F9801798	2G1FL1EP3F9801798	DS
F9801808	2G1FL1EP2F9801808	DS
F9801815	2G1FL1EPXF9801815	DS
F9801820	2G1FM1EP7F9801820	DS
F9801821	2G1FL1EP5F9801821	DS
F9801832	2G1FL1EPXF9801832	DS
FF264224	1G4GF5G38FF264224	DS
FF273682	1G11B5SL9FF273682	DS
FZ125343	1GNFLHEK9FZ125343	PS
FZ125345	1GNALBEK3FZ125345	PS
FZ125350	1GNALCEKXFZ125350	PS
FZ125351	1GNALCEK1FZ125351	PS
FZ125353	1GNFLHEK1FZ125353	PS
FZ125354	1GNALBEK4FZ125354	PS
FZ125367	1GNALBEK2FZ125367	PS
FZ125368	1GNALCEK7FZ125368	PS
FZ125378	1GNALBEK7FZ125378	PS
FZ125398	1GNFLHEK1FZ125398	PS
FZ125406	1GNFLHEK7FZ125406	PS
FZ125410	1GNFLHEK9FZ125410	PS
FZ125414	1GNALCEKXFZ125414	PS
FZ125415	1GNALBEK9FZ125415	PS
FZ125422	1GNLFEKXFZ125422	PS
FZ125423	1GNALBEK8FZ125423	PS
FZ125424	1GNFLGEEK6FZ125424	PS
FZ125425	1GNALAEK9FZ125425	PS
FZ125426	1GNALCEK6FZ125426	PS
FZ125432	1GNALBEK9FZ125432	PS
FZ125445	1GNALBEK7FZ125445	PS
FZ125451	1GNLFEK6FZ125451	PS

VIN – LAST 8	VIN - FULL	DS / PS
FZ125452	1GNALBEK4FZ125452	PS
FZ125453	1GNALBEK6FZ125453	PS
FZ125455	1GNALBEKXFZ125455	PS
FZ125456	1GNALCEK4FZ125456	PS
FZ125461	1GNALBEK5FZ125461	PS
FZ125463	1GNALBEK9FZ125463	PS
FZ125469	1GNFLFEK3FZ125469	PS
FZ125470	1GNALCEK9FZ125470	PS
FZ125472	1GNALCEK2FZ125472	PS
FZ125473	1GNALBEK1FZ125473	PS
FZ125475	1GNFLFEK9FZ125475	PS
FZ125477	1GNALBEK9FZ125477	PS
FZ125478	1GNALBEK0FZ125478	PS
FZ125479	1GNFLFEK6FZ125479	PS
FZ125480	1GNALCEK1FZ125480	PS
FZ125485	1GNFLFEK1FZ125485	PS
FZ125511	1GNALCEK8FZ125511	PS
FZ125512	1GNALBEK7FZ125512	PS
FZ125513	1GNALCEK1FZ125513	PS
FZ125518	1GNALCEK0FZ125518	PS
FZ125519	1GNALBEKXFZ125519	PS
FZ125520	1GNFLFEKXFZ125520	PS
FZ125521	1GNALBEK8FZ125521	PS
FZ125583	1GNALBEK8FZ125583	PS
FZ125584	1GNFLEEK0FZ125584	PS
FZ125585	1GNALBEK1FZ125585	PS
FZ125586	1GNALDEK9FZ125586	PS
FZ125587	1GNALBEK5FZ125587	PS
FZ125588	1GNFLFEK0FZ125588	PS
FZ125590	1GNALBEK5FZ125590	PS
FZ125593	1GNALBEK0FZ125593	PS
FZ125637	1GNALBEK5FZ125637	PS
FZ125638	1GNFLFEK0FZ125638	PS
FZ125649	1GNFLFEK5FZ125649	PS
FZ125650	1GNALAEK5FZ125650	PS
FZ125651	1GNALDEK5FZ125651	PS
FZ125652	1GNALBEK1FZ125652	PS
FZ125653	1GNFLEEK4FZ125653	PS
FZ125655	1GNALBEK7FZ125655	PS
FZ125660	1GNALAEK8FZ125660	PS
FZ125663	1GNFLHEK5FZ125663	PS
FZ125664	1GNALBEK8FZ125664	PS
FZ125665	1GNALCEK2FZ125665	PS
FZ125666	1GNALBEK1FZ125666	PS

VIN – LAST 8	VIN - FULL	DS / PS
FZ125669	1GNALDEK2FZ125669	PS
FZ125674	1GNALCEK3FZ125674	PS
FZ125688	1GNALCEK3FZ125688	PS
FZ125709	1GNALBEK4FZ125709	PS
FZ125710	1GNALBEK0FZ125710	PS
FZ125712	1GNALBEK4FZ125712	PS
FZ125713	1GNALBEK6FZ125713	PS
FZ125720	1GNALBEK3FZ125720	PS
FZ125812	1GNALDEK3FZ125812	PS
FZ125813	1GNFLFEK3FZ125813	PS
FZ125819	1GNALBEK0FZ125819	PS
FZ125821	1GNALDEK4FZ125821	PS
FZ125822	1GNALBEK0FZ125822	PS
FZ125828	1GNALCEK4FZ125828	PS
FZ126017	1GNALBEK2FZ126017	PS
FZ126018	1GNALBEK4FZ126018	PS
FZ126020	1GNALBEK2FZ126020	PS
FZ126024	1GNFLEEK0FZ126024	PS
FZ126025	1GNALDEK7FZ126025	PS
FZ126026	1GNALBEK3FZ126026	PS
FZ126159	1GNALBEK0FZ126159	PS
FZ126161	1GNFLFEK2FZ126161	PS
FZ126162	1GNALDEK6FZ126162	PS
FZ126163	1GNALBEK2FZ126163	PS
FZ126166	1GNALBEK8FZ126166	PS
FZ126167	1GNALCEK2FZ126167	PS
FZ126168	1GNFLEEK2FZ126168	PS
FZ126169	1GNALBEK3FZ126169	PS
FZ126207	1GNFLFEK0FZ126207	PS
FZ126209	1GNALBEK0FZ126209	PS
FZ126214	1GNALBEK4FZ126214	PS
FZ126217	1GNALCEK2FZ126217	PS
FZ126218	1GNALBEK1FZ126218	PS
FZ126353	1GNFLGK3FZ126353	PS
FZ126401	1GNALBEK3FZ126401	PS
FZ126495	1GNALDEK0FZ126495	PS
FZ126496	1GNALCEKXFZ126496	PS
FZ126498	1GNALDEK6FZ126498	PS
FZ126501	1GNALAEK4FZ126501	PS
FZ126502	1GNALBEK9FZ126502	PS
FZ126504	1GNALBEK2FZ126504	PS
FZ126505	1GNALBEK4FZ126505	PS
FZ126506	1GNALBEK6FZ126506	PS
FZ126514	1GNALCEK8FZ126514	PS

VIN – LAST 8	VIN - FULL	DS / PS
FZ126519	1GNALBEK4FZ126519	PS
FZ126681	1GNALCEK5FZ126681	PS
FZ126796	1GNFLFEK1FZ126796	PS
FZ126797	1GNALCEK2FZ126797	PS
FZ126799	1GNALCEK6FZ126799	PS
FZ126806	1GNFLFEK0FZ126806	PS
FZ127542	1GNFLGEK0FZ127542	DS
FZ127544	1GNFLFEK1FZ127544	DS

PART INFORMATION

Use the Vehicle Identification Number (VIN) and the Electronic Parts Catalog (EPC) to order the correct replacement parts.

Important: Only 414 vehicles are involved in this recall. Dealers are encouraged not to order recall parts for use as shelf stock.

For U.S. and Canada: Parts required to complete this recall are to be obtained from General Motors Customer Care and Aftersales (GMCCA). Please refer to your “involved vehicles listing” before ordering parts. Order parts on a CSO = Customer Special Order only. DRO’s will be cancelled. All orders will be reviewed prior to being filled.

For Export: Please contact CCA’s Export Order Fulfillment group to place the order on your behalf.

SERVICE PROCEDURE

This procedure involves replacing the left or right front seat outboard seat back airbag. Refer to the Side Impact Airbag Location Identification Table above to determine which airbag needs to be replaced. *The involved component is VIN specific.* Locate the VIN of the vehicle being serviced in the table to identify what airbags need to be replaced. The airbags that are removed from the vehicle will be returned to the supplier DO NOT DEPLOY the airbag. Use the return instructions at the end of the repair steps for packaging, labeling and returning the airbag.

NOTE: DO NOT damage or discard the box the replacement airbag was shipped in. The box MUST be retained and used to return the un-deployed original airbag. Please see the *Airbag Return Instructions*, following later in this document, regarding specific return shipping instructions. The instructions also contain information on obtaining a new replacement box in cases where the original packaging has been damaged.

1. Based on the VIN information in the Side Impact Airbag Location Identification Table, replace the left or right front seat outboard seat back airbag. Refer to *Front Seat Outboard Seat Back Airbag Replacement* in SI.

NOTE: The removed airbag module MUST be defaced with a paint pen or permanent marker once removed.

2. Using a paint pen, mark the old air bag as scrap.

WARNING: The removed airbag module(s) that are the subject of this recall **MUST NOT** be deployed. It is possible that the inflator could rupture propelling pieces of the inflator under force sufficient to cause injury.

3. DO NOT deploy the removed front seat outboard seat back airbag module. The removed airbag module is to be returned to the supplier. See *Airbag Return Instructions* below.

AIRBAG RETURN INSTRUCTIONS

TO REQUEST THE RETURN INSTRUCTION PACKET, PLEASE FOLLOW THE APPROPRIATE OPTION A OR B, DEPENDING ON YOUR DEALERSHIP LOCATION.

OPTION A - If your dealership is located in the lower 48 States, please email: fieldaction.01320@menlowworldwide.com

You will need to provide the following information in the email:

- Dealer name, address, telephone number
- Dealer number
- Quantity of airbags in your possession to return.
- Please include in the subject line: Safety Recall #01320

Preparing the airbag for return for Option A (lower 48 States):

As the shipper, you are responsible for proper packing and document completion. The person signing the document must be trained in hazardous material procedures, and the training records must be on file at your dealership.

NOTE: If the packaging is damaged, please contact via email at:

FieldAction.01320@menlowworldwide.com or by telephone: 1-210-250-5079 to have a replacement box shipped to your location.

PACKAGE REFERENCE GUIDE

NOTE: Examples of **Acceptable packaging (1)** are shown on the left side of the graphics below; **Unacceptable packaging (2)** are shown on the right.

Hazardous materials packaging damages can be classified into one or more of the following different types. They include:



3961561

- **Abrasions:** Abrasions result from sliding the package against a rough surface (e.g. concrete floors). Major abrasions (2) are NOT acceptable. Note the flutes are visible.



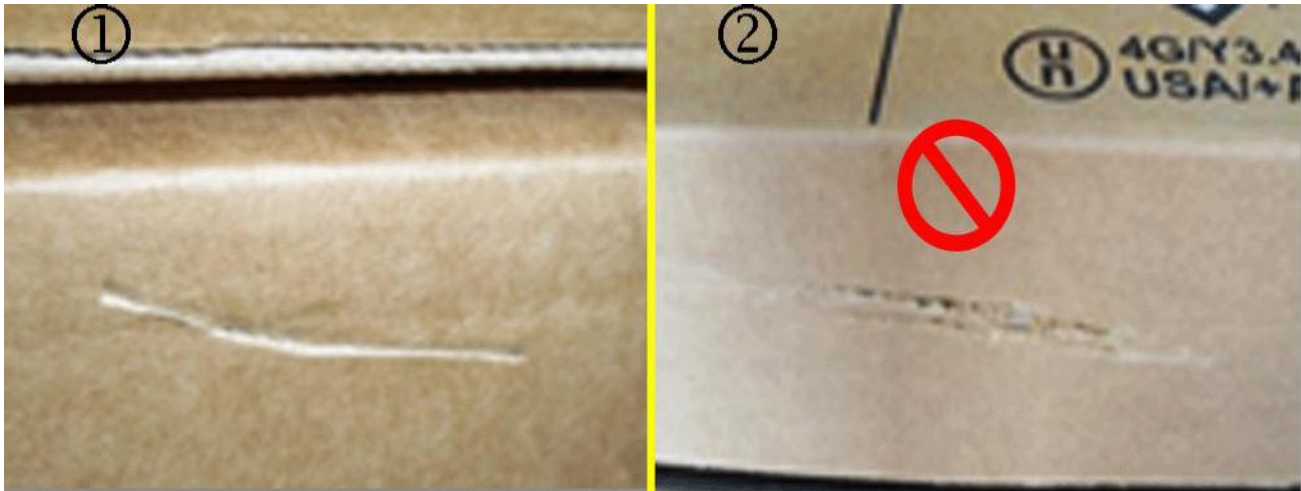
3961563

- **Compressions:** Compressions result from superimposed weights (e.g. stacked too high) or from dropping the packages. Small dimples (1) are acceptable.



3961564

- **Dents:** Minor dents (1) occur through normal handling and picking (e.g. pulling from bin locations) and are acceptable. Major dents (2) result from impacts with others objects (e.g. pallet impacts).



3961565

- **Incisions:** Minor incisions (1) are acceptable. Major incisions (2) (e.g. pallet box cut open with utility knife) are NOT acceptable.



3961566

- **Labeling:** Packages with excessive labeling are NOT acceptable, particularly if the labels obscure other required marks and labels.



3961567

- **Other Damages:** Multiple damages, such as those shown above, may affect the integrity of the packages, and are NOT acceptable. Others that are not as severe may be acceptable. If questionable, repackage the material.



3961568

- **Punctures:** Any punctures, even minor ones, are NOT acceptable.



3961568

- **Tears:** Minor tears will not generally affect the structural integrity of the packaging and are considered to be normal "wear and tear", however, large tears or rips are NOT acceptable.



3961569

- **Water Damages:** Water Damages, such as the example shown above, are NOT acceptable. Water damages will affect the structural integrity of the packaging. These packages should be repacked in appropriate specification packages.
1. **DO NOT DEPLOY THE AIRBAG.** Ensure that the box the replacement airbag arrived in is not damaged and place the Front Seat Side Impact Airbag Module in the box. Also, make sure to include a copy of the repair order in the box. (Generic packaging shown)



3961570

Important: The components required for the completed return package are dunnage (1) and foam (2), as shown in the graphic above.

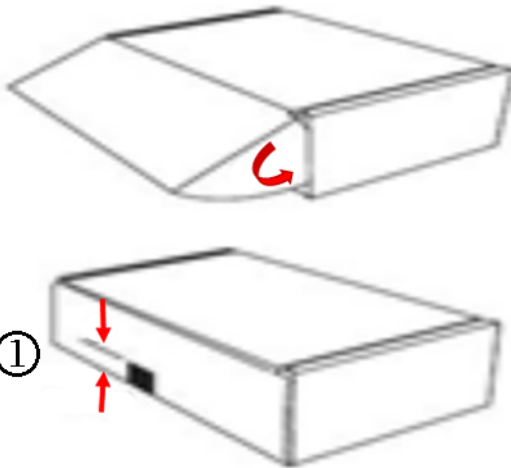


3955264

2. Close and secure any rollover tucks / flaps following the closing instructions below:

Note: When applying tape and blacking out labels with a permanent marker, ensure of the following:

- DO NOT peel any labels off the box, or the box will be damaged and cannot be reused.
- DO NOT apply tape to or write on the Class 9 hazard label, the proper shipping name, the ID number, or the UN specification marking.



3955265

- The tape strip should extend at least 2 inches (1) onto either side of the front fold and the bottom surface of the box. The minimal tape length should be 4 inches.
 - 2.1. Seal the front flap with a strip of 2 inch wide clear plastic adhesive pressure sensitive tape (generic packaging plastic tape) measuring at least 4 inches long.
 - 2.2. Black out any old shipping labels and barcodes (other than those noted above) with a permanent black marker.
 - 2.3. If seeking additional information, please see closing instructions which are included in your instruction packet.

Upon receipt of the instruction packet

1. Complete the OP-900PRP Hazardous Certification form:
 - 1.1 Fill the Shipper Name and Address in all three sections of the form. Sign and date the FedEx Copy and Customer Copy sections.
 - 1.2 Peel off the Shipper Receipt and Receipt/Shipper Number tabs from the top of the FedEx Ground PRP shipping label.
 - 1.3 Affix the Shipper Receipt tab to the Tracking ID field on the FedEx Copy of the form, and affix the Receipt/Shipper Number tab to the Tracking ID field on the Customer Copy.
 - 1.4 Tear off the four bottom labels from the form, and place all four on them in the adhesive pouch.
 - 1.5 Remove the backing and firmly affix the pouch onto the bottom of the box.
 - 1.6 Peel off the Box Copy of the form, and firmly affix it to the front side of the box flap
 - 1.7 Tear off and keep the Customer Copy for your records (to be retained for a minimum of two years).
 - 1.8 When the package is picked up, give the FedEx Copy to the FedEx Ground driver.
2. Complete the FedEx Ground PRP shipping label:
 - 2.1 Fill in the Shipper Name and Address in the upper section of the label (RA# is not required).
 - 2.2 Peel off the backing and affix label to the side of the box.

Important:

- Ensure that all steps have been properly completed. All packages must be prepared in accordance with U.S. Department of Transportation and FedEx Ground requirements. Incomplete or missing information will cause rejection of the shipment and delay your return credit.
- Give the package and the FedEx Copy of the OP-900PRP form to your FedEx Ground driver. If you don't have regular FedEx Ground Service, call **888-777-6040** to schedule a pickup.

3. Ship the package.

OPTION B: If your dealership is located outside of the lower 48 States, please utilize the following email addresses and/or telephone number to arrange for the return of the used airbag module.

- **Canada or Hawaii:**
MLGTakataRestraints_International@Menloworldwide.com

MenloControlTower@craneww.com

- **Or call Menloworldwide at 1-210-250-5079 to obtain return instructions.**

In Canada when returning airbag modules using the Menlo process the preferred return quantity has been 10 modules. If you have less than 10 modules please state in your email (or phone call) that you have less than 10 modules and do not expect additional quantities of airbags in the near future. An exception will be made to complete the return with the lesser quantity.

- **Alaska:**

MLGTakataRestraints_International@Menloworldwide.com (Because a different carrier (called Lynden) is being utilized out of Alaska, ONLY USE THIS EMAIL ADDRESS.)

- **Or call Menloworldwide at 1-210-250-5079 to obtain return instructions.**

Preparing the airbag for return for Option B (Outside of the lower 48 States):

Important: Review the *Package Reference Guide* section above for clarification on whether the original packaging is deemed Acceptable and Unacceptable.

NOTE: If the packaging is damaged, please contact via email at:

FieldAction.01320@menloworldwide.com or by telephone: 1-210-250-5079 to have a replacement box shipped to your location.

1. **DO NOT DEPLOY the AIRBAG.** Ensure that the box the replacement airbag arrived in is not damaged and place the Front Seat Side Impact Airbag Module in the box. Also, make sure to include a copy of the repair order in the box. (Generic Packaging Shown)



3961570

Important: The components required for the completed return package are dunnage (1) and foam (2), as shown in the graphic above.

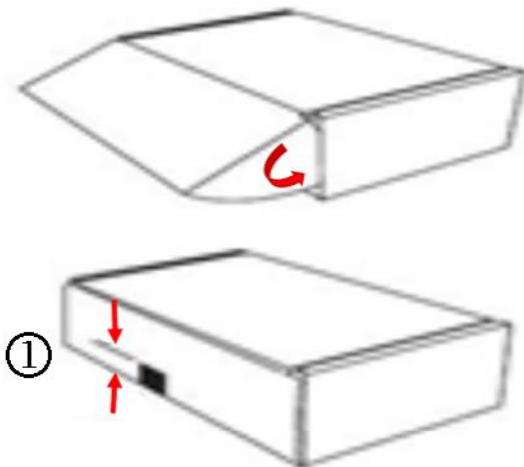


3955264

2. Close and secure any rollover tucks or flaps on the box following the closing instructions below:

Note: When applying tape and blacking out labels with a permanent marker, ensure of the following:

- DO NOT peel any labels off the box, or the box will be damaged and cannot be reused.
- DO NOT apply tape to or write on the Class 9 hazard label, the proper shipping name, the ID number, or the UN specification marking.



3955265

- The tape strip should extend at least 2 inches (1) onto either side of the front fold and the bottom surface of the box. The minimal tape length should be 4 inches.
 - 2.1. Seal the front flap with a strip of 2 inch wide clear plastic adhesive pressure sensitive tape (generic packaging plastic tape) measuring at least 4 inches long.
 - 2.2. Black out any old shipping labels and barcodes (other than those noted above) with a permanent black marker.
 - 2.3. Store the package in a secure location until collected by Menloworldwide.

DO NOT complete FedEx documents that may be enclosed in the box with the new module. These are intended for dealers using **Option A** only.

COURTESY TRANSPORTATION – For US and Canada

The General Motors Courtesy Transportation program is intended to minimize customer inconvenience when a vehicle requires a repair that is covered by the New Vehicle Limited Warranties. The availability of courtesy transportation to customers whose vehicles are within the warranty coverage period and involved in a product program is very important in maintaining customer satisfaction. Dealers are to ensure that these customers understand that shuttle service or some other form of courtesy transportation is available and will be provided at no charge. Dealers should refer to the General Motors Service Policies and Procedures Manual for Courtesy Transportation guidelines.

WARRANTY TRANSACTION INFORMATION

Submit a transaction using the table below. All transactions should be submitted as a ZFAT transaction type, unless noted otherwise.

Labor Code	Description	Labor Time
9101832	Front Seat Outboard Seat Back Airbag Replacement Driver Side	
	LaCrosse	0.9
	Regal and Malibu	1.0
	XTS	0.5
	Camaro	0.7
	ADD: Return One Airbag	0.2
9101841	Front Seat Outboard Seat Back Airbag Replacement Passenger Side	
	LaCrosse	0.9
	Regal and Malibu	1.0
	XTS	0.5
	Camaro	0.7
	ADD: Return One Airbag	0.2

CUSTOMER NOTIFICATION – For US and Canada

General Motors will notify customers of this recall on their vehicle via FedEx Overnight Delivery. See sample letter at the end of this bulletin.

CUSTOMER NOTIFICATION – For Export

Letters will be sent to known owners of record located within areas covered by the US National Traffic and Motor Vehicle Safety Act.

DEALER RECALL RESPONSIBILITY – For US and Export (US States, Territories, and Possessions)

It is a violation of Federal law for a dealer to deliver a new motor vehicle or any new or used item of motor vehicle equipment (including a tire) covered by this notification under a sale or lease until the defect or noncompliance is remedied.

The US National Traffic and Motor Vehicle Safety Act provides that each vehicle that is subject to a recall of this type must be adequately repaired within a reasonable time after the customer has tendered it for repair. A failure to repair within sixty days after tender of a vehicle is prima facie evidence of failure to repair within a reasonable time. If the condition is not adequately repaired within a reasonable time, the customer may be entitled to an identical or reasonably equivalent vehicle at no charge or to a refund of the purchase price less a reasonable allowance for depreciation. To avoid having to provide these burdensome remedies, every effort must be made to promptly schedule an appointment with each customer and to repair their vehicle as soon as possible. In the recall notification letters, customers are told how to contact the US National Highway Traffic Safety Administration if the recall is not completed within a reasonable time.

DEALER RECALL RESPONSIBILITY – All

All unsold new vehicles in dealers' possession and subject to this recall must be held and inspected/repaired per the service procedure of this recall bulletin before customers take possession of these vehicles.

Dealers are to service all vehicles subject to this recall at no charge to customers, regardless of mileage, age of vehicle, or ownership, from this time forward.

Customers who have recently purchased vehicles sold from your vehicle inventory, and for which there is no customer information indicated on the dealer listing, are to be contacted by the dealer. Arrangements are to be made to make the required correction according to the instructions contained in this bulletin. A copy of the customer letter is provided in this bulletin for your use in contacting customers. Recall follow-up cards should not be used for this purpose, since the customer may not as yet have received the notification letter.

In summary, whenever a vehicle subject to this recall enters your vehicle inventory, or is in your dealership for service in the future, you must take the steps necessary to be sure the recall correction has been made before selling or releasing the vehicle.





IMPORTANT SAFETY RECALL

October 2015

Dear General Motors Customer:

This notice is sent to you in accordance with the National Traffic and Motor Vehicle Safety Act.

General Motors has decided that a defect that relates to motor vehicle safety exists in certain 2015 model year Buick LaCrosse, Cadillac XTS, Chevrolet Camaro, Equinox, Malibu, and GMC Terrain vehicles. As a result, GM is conducting a safety recall. We apologize for this inconvenience. However, we are concerned about your safety and continued satisfaction with our products.

IMPORTANT

- This notice applies to your 2015 model year Buick LaCrosse, Cadillac XTS, Chevrolet Camaro, Chevrolet Equinox, Chevrolet Malibu, or GMC Terrain
- Your vehicle is involved in GM safety recall 01320.
- Schedule an appointment with your GM Dealer as soon as possible.
- This service will be performed for you at **no charge**.
- **You should make arrangements to bring your vehicle in as soon as possible due to the risk of potential injury associated with an airbag deployment in the event of a crash.**

Why is your vehicle being recalled?

One of the seat-mounted side impact airbag modules in these vehicles may contain a defect which, in the event of an airbag deployment, can cause inflator components to separate and be propelled into the interior compartment, possibly striking occupants. It is also possible that the airbag may inflate only partially, or not at all, in the event of a crash.

What will we do?

Your GM dealer will replace the affected front seat-mounted side impact airbag modules. This service will be performed for you at **no charge**. Because of service scheduling requirements, it is likely that your dealer will need your vehicle longer than the actual service correction time of up to approximately 2 hours.

What should you do?

You should contact your GM dealer to arrange a service appointment as soon as possible.

You may continue to use your vehicle as the condition is possible only during airbag deployment. If you have concerns about the continued use of your vehicle before the repair can be completed,

there is the availability of shuttle service as well as courtesy transportation at **no charge**.

Do you have questions?

If you have questions or concerns that your dealer is unable to resolve, please contact the appropriate Customer Assistance Center at the number listed below.

Division	Number	Text Telephones (TTY)
Cadillac	1-800-458-8006	1-800-833-2622
Chevrolet	1-800-222-1020	1-800-833-2438
GMC	1-800-462-8782	1-888-889-2438
Guam	65-6267-1752	
Puerto Rico – English	1-800-496-9992	
Puerto Rico – Español	1-800-496-9993	
Virgin Islands	1-800-496-9994	

If after contacting your dealer and the Customer Assistance Center, you are still not satisfied we have done our best to remedy this condition without charge and within a reasonable time, you may wish to write the Administrator, National Highway Traffic Safety Administration, 1200 New Jersey Avenue, SE., Washington, DC 20590, or call the toll-free Vehicle Safety Hotline at 1.888.327.4236 (TTY 1.800.424.9153), or go to <http://www.safercar.gov>. The National Highway Traffic Safety Administration Campaign ID Number for this recall is 15V666.

Federal regulation requires that any vehicle lessor receiving this recall notice must forward a copy of this notice to the lessee within ten days.



Vice President
Global Vehicle Safety