



This Service Information bulletin supersedes SI 32 02 15 **dated March 2016**.

Please perform the procedure outlined in this Service Information on all affected vehicles before customer delivery. In the event the customer has already taken delivery of the vehicle, please perform the procedure the next time the vehicle is in the shop.

SUBJECT**Recall 15V-660: Electro-Hydraulic Power Assist Steering (EHPAS) System****MODEL**

R50 (Cooper)

R53 (Cooper S)

R52 (Cooper and Cooper S Convertibles)

SITUATION

Force necessary to steer the vehicle may have intermittently or permanently increased.

AFFECTED VEHICLES

This Recall Campaign involves R50, R52 and R53 models produced from September 12th 2001 to February 9th 2005.

Vehicles which require this Recall Campaign to be completed will show it as "Open" when checked either in AIR, the "Service Menu" of DCSnet (Dealer Communication System) or with the Key Reader.

Customer letters will be mailed on Friday, March 4, 2016. This will inform them to visit a dealer and have the repair performed.

CAUSE

Components of the power assisted steering system may have failed/may be failing.

CORRECTION

Check the power steering pump with wiring harness and the fan. Replace them if necessary.

PROCEDURE

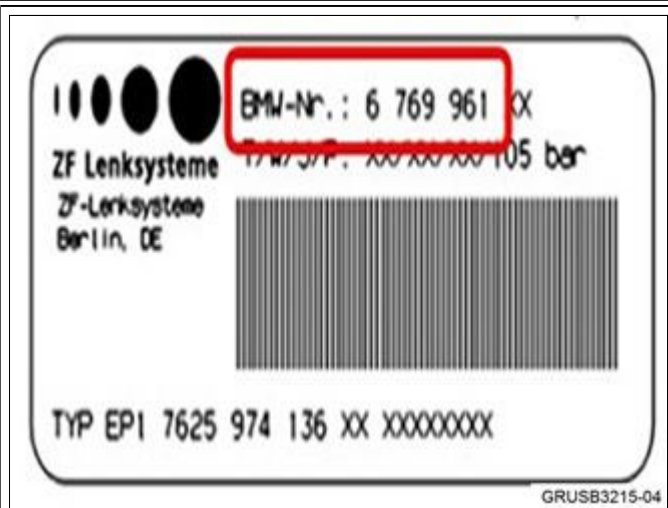
1. Check the part number of the power steering pump.

Remove the power steering pump as per REP 32 41 030 "Remove and refit the power steering pump for the hydraulic steering gear". In the unlikely event of a leaking or damaged low pressure hose between the fluid reservoir and pump, the hose should be replaced. Refer to the latest version of ETK for the correct intake manifold P/N.

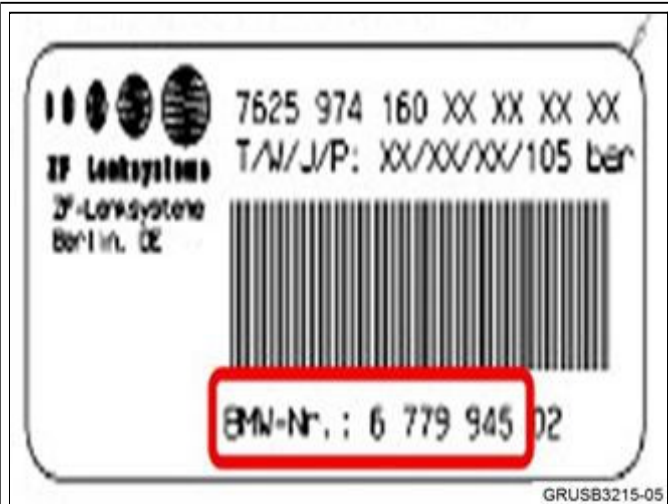


- Identify the part number on the label attached to the power steering pump

There are 3 different types of labels that can be found on the power steering pump



- Variant 1 with BMW part number located at the top



- Variant 2 with BMW part number located at the bottom



- Variant 3 without BMW part number (remanufactured unit)

NEW Table of unaffected Electro Hydraulic Power Assist (EHPAS) pump numbers

Variant	Part Numbers
1 and 2	6 769 758 or 6 769 759
	6 769 962 or 6 769 963
	6 778 424 or 6 778 425
3	76225955131-50
	7625955146-50

Note: Before making electrical connections to the following components, check the wiring harness and ground connection as described in step 2 and 3.

Was the part number of the power steering pump found AND shown in the table above?

YES - Reinstall the power steering pump and fan as per REP 32 41 030 “Remove and refit the power steering pump for the hydraulic steering gear” and REP 32 41 070 “Remove and refit/replace the fan for the hydraulic steering”.

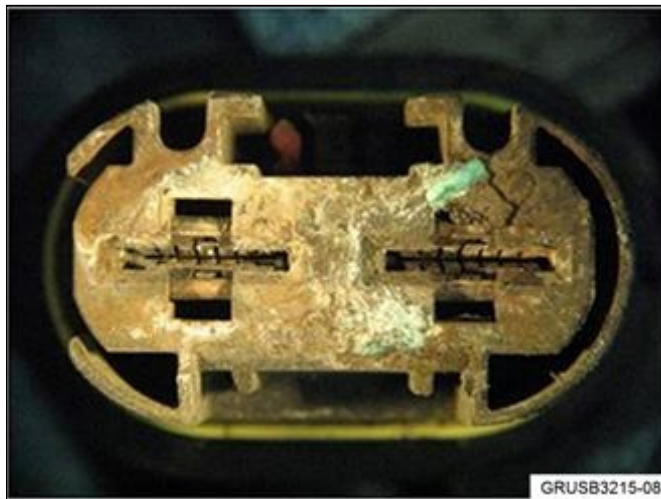
NO – Replace the power steering pump and fan as per REP 32 41 030 “Remove and refit the power steering pump for the hydraulic steering gear” and REP 32 41 070 “Remove and refit/replace the fan for the hydraulic steering”.

2. Check the wiring harness connector on the Electro Hydraulic Power Assist Pump (EHPAS) for corrosion or damage.

--	--



Connector without corrosion



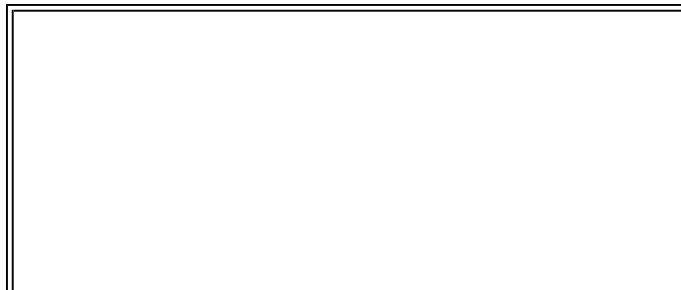
Connector with corrosion

Is there corrosion or damage on the connector?

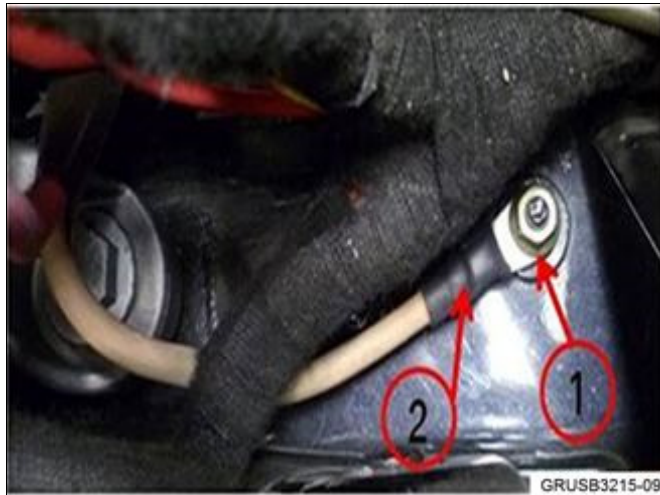
YES - replace the additional wiring harness. Install the additional wiring harness in the same way as the existing wiring harness and connect to the power steering pump and fan.

NO – make the electrical connections to the power steering pump and fan.

3. Check the ground connection on the front left engine support for protective heat shrink tubing around the cable eye crimp.



Ground connection (1) on the front



engine support with heat shrink tubing (2).



Ground connection without protective heat shrink tubing around cable eye crimp.

Is there protective heat shrink tubing on the ground cable eye crimp?

NO - Refer to REP 61 00 ...”Information on handling wiring harness and lines.

YES – make the ground connection on the front left engine support.

PARTS INFORMATION

Checking the EHPAS only:

Part Number	Description	Quantity
07 11 9 905 374	Self-locking flanged nut	3
32 41 6 757 254	Flanged hexagon nut	4 (if required)
07 13 6 778 958	Rubber mount	Up to 4 (if required)
32 11 1 131 345	Hose clamps	2 (if required)
07 11 9 906 463	Sealing ring	2 (if required)

32 41 6 762 724	O-ring	1 (if required)
32 41 6 754 507	Internal Torx Bolt M8x20	2 (if required)
83 29 0 429 576	Hydraulic fluid CHF 11 S (1000ml)	As needed

Replacing the power steering pump:

Part Number	Description	Quantity
32 41 6 882 269	Power steering pump	1
32 41 6 882 330	Fan with protective grill	1

Replacing the wire harness: only if needed... please do not order for stock

Part Number	Description	Quantity
12 42 7 530 354	Additional wiring harness for the R50 power steering pump	1
Or:		
12 42 7 530 357	Additional wiring harness for power steering pump R52 R53	1
61 13 1 367 599	Cable tie	5

NEW WARRANTY INFORMATION

Reimbursement for this Recall will be via normal claim entry utilizing the following information:

Defect Code:	00 32 28 02 00
---------------------	-----------------------

Checking only

Labor Operation:	Labor Allowance:	Description:
00 63 163	Refer to KSD2	Check the power steering pump and wiring harness (includes removing and installing the power steering pump and fan, no repair is necessary) (Main work)

Note: Some of these vehicles may have already had repairs performed and/or previous repairs reimbursed and submitted as outlined in [SIM01 01 13](#).

One of the repairs listed below is necessary:

Labor Operation:	Labor Allowance:	Description:
00 63 164	Refer to KSD2	Replace the power steering pump and the fan, check the wiring harness (Main work)
Or:		
00 63 165	Refer to KSD2	Check the power steering pump and replace the wiring harness (includes removing and installing the power steering pump) (Main work)
Or:		
00 63 166	Refer to KSD2	Replace the power steering pump, fan and wiring harness (Main work)

Refer to KSD2 for the corresponding flat rate unit (FRU) allowance.

And, as needed:

Sublet – Bulk Materials

Sublet Code 4	See sublet reimbursement calculation below	Reimbursement for the used quantity of Pentosin CHF 11S (Bulk container reference P/N 83 29 0 429 576, “1000ml” container. Do not use this part number for claim submission)
---------------	--	--

Sublet calculation: Reimbursement for used quantities of Pentosin CHF 11S (Bulk container reference P/N 83 29 0 429 576, “1000ml” container) at dealer net plus your dealer’s handling.

Enter this material cost in sublet and itemize the amount in the claim comment section

Prior Customer-pay Repair Reimbursement (TREAD Act)

MINI USA, a division of BMW of North America, LLC (“MINI USA”) will provide reimbursement for “qualifying customer-pay repairs” that were performed on an eligible vehicle prior to the release of this Recall or the previously announced limited warranty extension (see [SI M01 01 13](#)).

Reimbursement Procedure

1. Review and verify that the previous customer-pay invoice (MINI dealer or independent repair shop) contains a repair that was performed that addresses the issues described in this

“Recall” Service Information bulletin.

2. **Review the DCSnet Warranty Vehicle Inquiry to confirm that this “prior repair” has not already been reimbursed by MINI USA as outlined in [SI M01 01 13](#).**
3. Reimburse the customer (labor and parts).
4. Submit for this customer-paid repair expense under Defect Code 85 99 00 12 NA, as follows:
 - Sublet Code 3
 - Dollar amount (with no markup)
 - Comment: Recall 15V-660: Electro-Hydraulic Power Assist Steering (EHPAS) System - Reimbursement for allowable expenses that relate to performing a prior qualifying customer-pay repair.
 - Itemize the sublet amount on the repair order and in the claim comments
5. Retain the “original” customer pay invoice in your files; this documentation may be requested by MINI during the claim review process).

Note: A previously reimbursed repair, a repair performed on a non-affected vehicle, and/or, the diagnosis and repair of other “unrelated issues” on an affected or non-affected vehicles does not qualify for reimbursement.

This claim submission for the “prior customer-pay reimbursement,” when it is submitted as outlined under Defect Code 85 99 00 12 NA, **will not close** the “Open” Safety Recall on the vehicle.

The applicable “open” Recall repair must still be performed on the vehicle.

ATTACHMENTS

View PDF attachment [M320215 Q&A](#).

View PDF attachment [M320215 Final Customer Letter](#).

View PDF attachment [M320215 Recall Notice](#).

[Copyright ©2016 BMW of North America, Inc.]