



HYUNDAI
Technical Service Bulletin

GROUP RECALL	NUMBER 25-01-008H
DATE FEBRUARY 2025	MODEL(S) SONATA (YF) ELANTRA (MD)

SUBJECT: FRONT COIL SPRING URETHANE TUBE INSTALLATION
 (RECALL 133)

This TSB supersedes 20-01-044H to update the part numbers, op code, and note any part changes in the service procedure.

*** IMPORTANT**

Vehicle repairs related to safety recalls are critically important and must be performed properly in accordance with TSB procedures. Review this bulletin in its entirety prior to beginning any repair work.

As required by federal law, dealers must not deliver new vehicles for sale or for lease to customers until all open recalls have been performed. Dealers must also perform all open recalls on used vehicles, demo, and rental vehicles prior to placing them into customer use and whenever an affected vehicle is in the shop for any maintenance or repair.

Access the "Vehicle Information" screen via WebDCS to identify open recalls.

Description: On certain 2011 Sonata (YF) and Elantra (MD) vehicles, corrosion can build up at the front coil springs, resulting in possible fracture near the base. A fractured spring can make contact with the tire, potentially resulting in a tire puncture and increasing the risk of a crash. This bulletin describes the procedure to install urethane tubes over the front coil springs to prevent a tire puncture.



- Applicable Vehicles (Certain):**
- 2011MY Elantra (MD) produced 11/12/2010–03/31/2011
 - 2011MY Sonata (YF) produced 12/11/2009–02/28/2010
 - **Area:** Connecticut, Delaware, Illinois, Indiana, Iowa, Maine, Maryland, Massachusetts, Michigan, Minnesota, Missouri, New Hampshire, New Jersey, New York, Ohio, Pennsylvania, Rhode Island, Vermont, West Virginia, Wisconsin, and the District of Columbia


*** IMPORTANT**

There are circumstances under which vehicles that are not currently registered or have never been registered in a “salt belt” state may be eligible for this service campaign. These circumstances include:

- Vehicles that were relocated into a “salt belt” area and/or
- Vehicles registered in a “non-salt belt” state and driven in a “salt belt” area.

If it is determined that an owner of a vehicle within the affected VIN production date range relocates or has operated their vehicle in a “salt belt” area, the dealer should perform this procedure at no cost to the customer. **The dealer must submit a Prior Approval request before starting repairs.**

Parts Information:

Model	Part Name	Part Number	Figure	Remarks
Elantra (MD)	Urethane Tube	54631-3X001QQH		Qty: 2 blue tubes per package
Sonata (YF)		54631-3Q001QQH		Qty: 2 yellow tubes per package

CAUTION

Prior to working with urethane tubes:

- Wear proper gloves and eye protection.
- Work in a well-ventilated area.

NOTICE

- Do **NOT** use urethane tube if past expiration date. Discard expired tubes.
- Do **NOT** use urethane tube if less than or equal to **330 mm (13 inches)** long whether expired or non-expired.
- Use **immediately** after opening. The urethane tube will contract if exposed to air.
 - Remove and install one tube at a time.
 - Install immediately after opening the package.
- Keep package in a dark, cool place away from direct sunlight.

SUBJECT:

FRONT COIL SPRING URETHANE TUBE INSTALLATION (RECALL 133)

Required Equipment/Supplies:

Name	Equipment/Supply #	Figure	Remarks
Coil Spring Compressor (Jig) Set	OK546-1H100QQH		Previously provided to all dealers.
Henkel Teroson MS930 Sealant	HKL-MS930QQH		One (1) tube will service 7 vehicles.
Caulking Gun	N/A		Commercially available

Warranty Information:

Model	Op. Code	Operation	Op. Time	Casual Part	Nature Code	Cause Code
Elantra (MD)	51C079R1	Urethane Tube Installation (both sides)	0.5 M/H	54659-26000	A11	ZZ6
Sonata (YF)						

NOTE 1: Submit claim on Claim Entry Screen as “Campaign” type.

NOTE 2: If a part is found in need of replacement while performing this recall and the affected part is still under warranty, submit a separate claim using the same repair order. If the affected part is out of warranty, submit a Prior Approval request for goodwill consideration prior to performing the work.

NOTE 3: The incident parts are subject to callback through the normal Warranty Technical Center (WTC) parts return process. **Claim is subject to debit if the part is not returned.**

Service Procedure:

NOTICE

Applying the recommended torque to all fasteners is essential to reduce potential issues from occurring after the service procedure.

1. Lift the vehicle and remove the front wheels and tires (A).

Tightening Torque:

lb-ft	39
-------	----

N.m	53
-----	----

CAUTION

Wear eye protection when performing work for spring compression.



2. Carefully remove the tube without damaging the black coating.

Information

Certain Sonata vehicles may have a brown urethane tube installed on the spring.



3. On one side of the vehicle, place the spring compression jigs (B) on opposites as show in the photo.

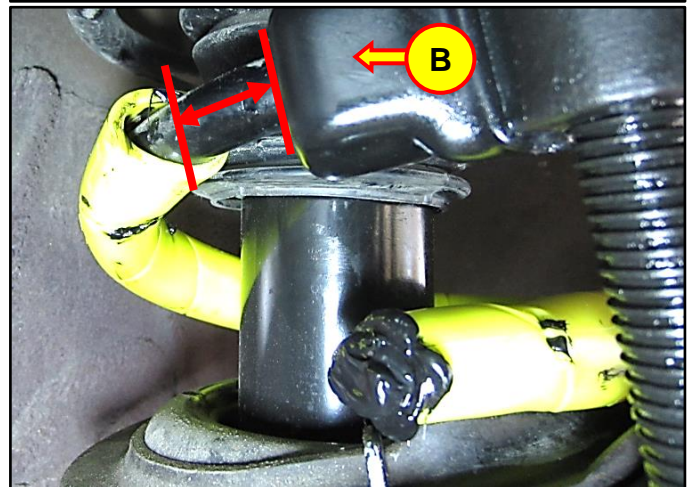
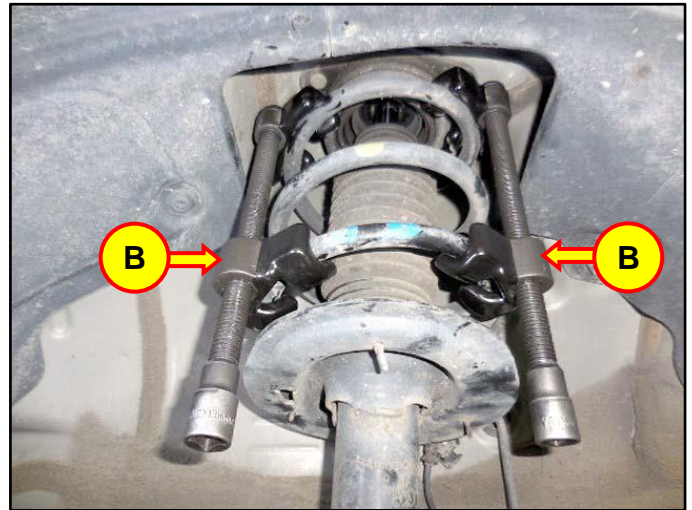
Compress the coil one side at a time, ensuring the gap does **NOT** exceed **25 mm (1 inch)** on either side.

NOTICE

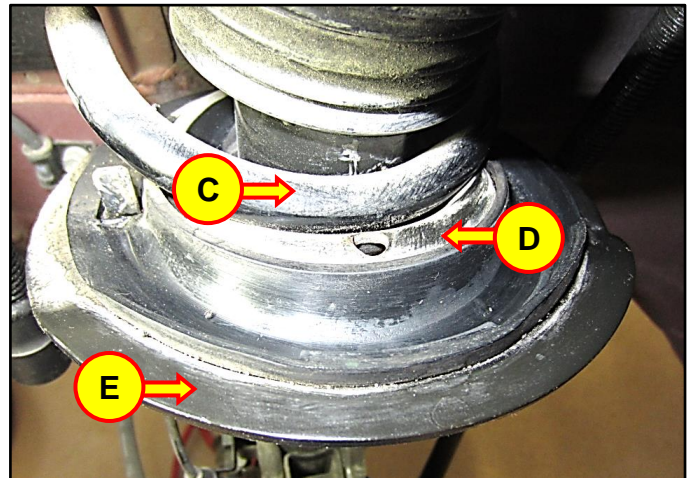
Do **NOT** compress the spring more than **50 mm (2 inches)**.

**Information**

Place the jig (B) on the spring toe allow enough clearance for the tube to fully slide on.



4. Move the bottom of the spring (C) over the inside hump (D) of the lower spring seat (E).

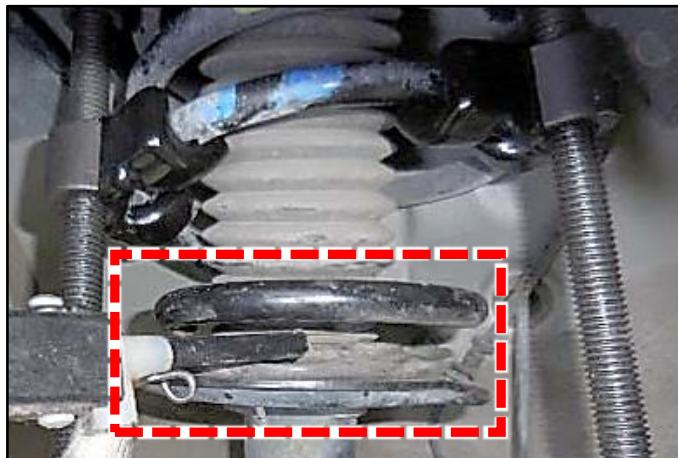


5. **Debris Removal:**

- Use an air nozzle to remove debris from the lower spring seat.

Clean & Inspect:

- Clean the lower part of the spring where the urethane tube will be installed.
- Inspect the lower coils for damage or corrosion.
 - If damaged or corroded, replace as needed.
 - If under warranty, submit a separate claim under the same repair order.
 - If the spring is out of warranty, submit a Prior Approval Request for goodwill consideration before proceeding.

6. **Tube Replacement:****i Information**

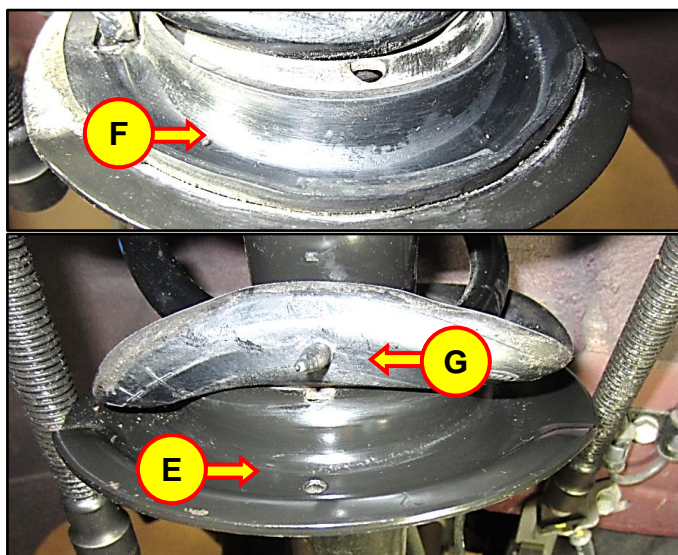
If a replacement spring (**P/N 54630-3Q010**) is needed for a Sonata, it may have already had a brown urethane tube installed.

- Carefully remove the brown urethane tube without damaging the black coating.
- Install the urethane tube.
- Remove the spring per shop manual.
- Install the supplied spring into the vehicle per shop manual.



7. Remove the rubber spring pad (F) from the lower spring seat.

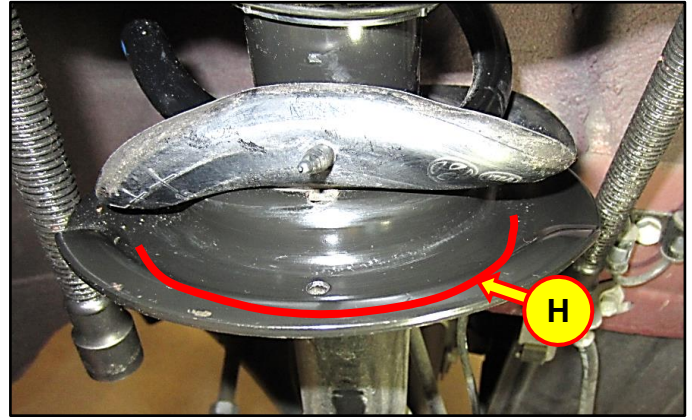
Clean the top (F) and bottom (G). surfaces of the pad and the lower spring seat.



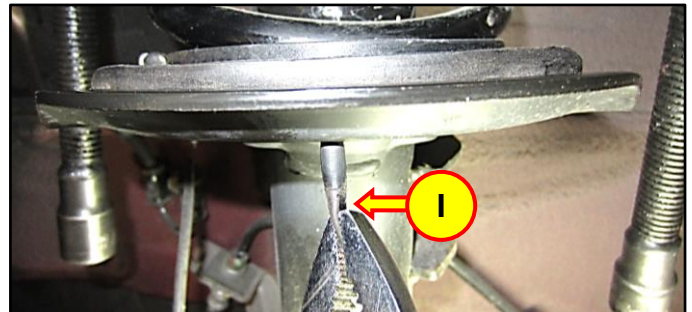
8. Apply a bead of sealant between the rubber pad and lower spring seat (H) as shown in the photo.

i Information

Sealant must be discarded by the “**best before**” date printed on the tube.



9. Reinstall the rubber spring pad by pulling the rubber pins (I) back through their respective holes in the lower spring seat.



! CAUTION

Prior to working with urethane tubes:

- Wear proper gloves and eye protection.
- Work in a well-ventilated area.

NOTICE

- Do **NOT** use urethane tube if past expiration date. Discard expired tubes.
- Do **NOT** use urethane tube if less than or equal to **330 mm (13 inches)** long whether expired or non-expired.
- Use **immediately** after opening. The urethane tube will contract if exposed to air.
 - Remove and install one tube at a time.
 - Install immediately after opening the package.
- Keep package in a dark, cool place away from direct sunlight.

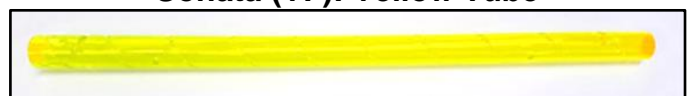
10. Select and unpack the applicable urethane tube:

- Elantra (MD) – blue
- Sonata (YF) – yellow

Elantra (MD): Blue Tube

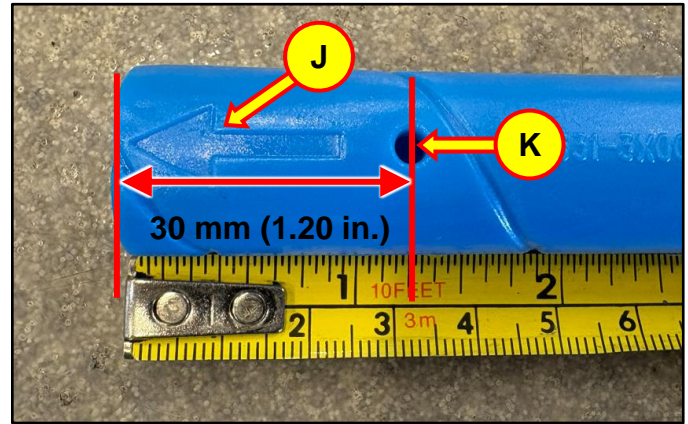


Sonata (YF): Yellow Tube

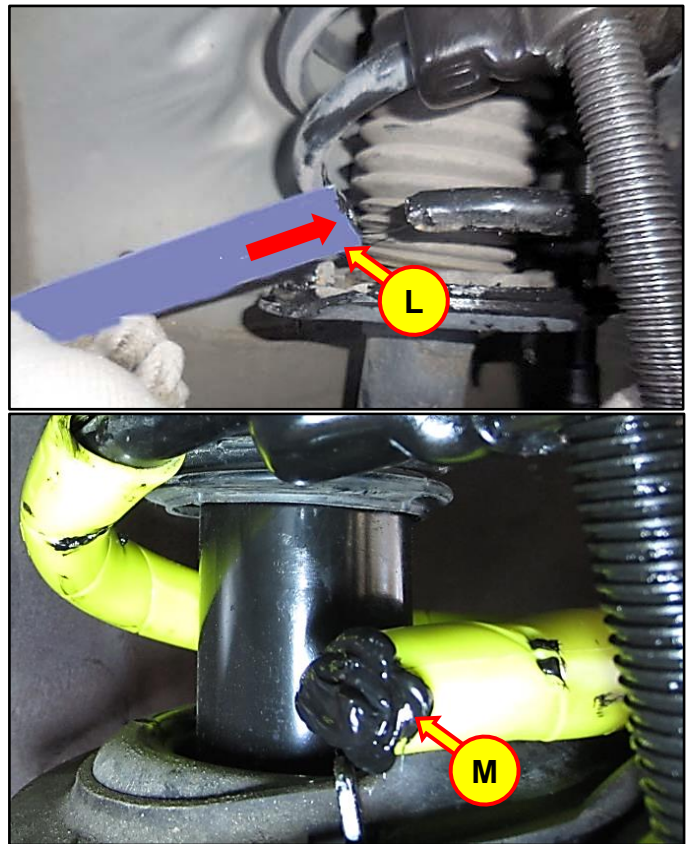


11. Locate the arrow on one end of the tube (J).

Fill the tube with sealant from the end marked with the arrow until the sealant reaches **30 mm (1.2 inches)** or the round openings (K).



12. Start from the end marked with the arrow (L), slide the urethane tube over the end of the coil spring until tube (M) end aligns with the spring end.



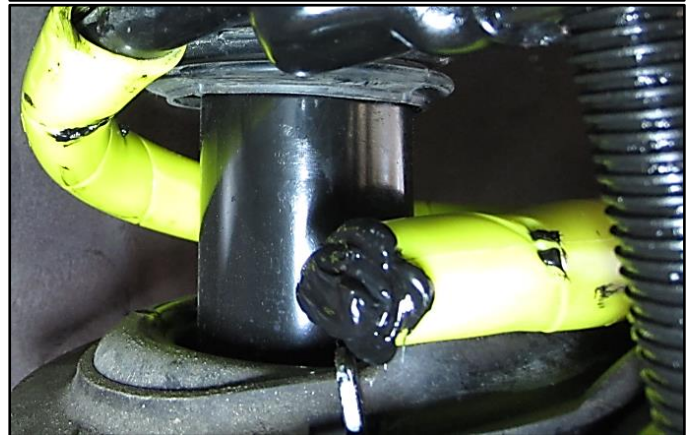
13. Spring Decompression:
- Carefully decompress the springs, ensuring the spring is properly engaged with the upper and lower spring seats on the strut.
 - The end of the spring should align with the lower spring seat guide (M).
 - Ensure the urethane tube stays in position during decompression.

i Information

Decompress each side of the spring by no more than **25 mm (1 inch)** at a time.

Confirm the coil spring is properly engaged with the strut at the upper and lower spring seats. If misaligned, recompress and realign the spring.

Confirm the tube is **NOT** misaligned. If misaligned, then recompress and realign.



14. Repeat the same steps for the other side.
15. Reinstall wheels and tires.
16. The service procedure is now complete.