



SAFETY RECALL BULLETIN

SUBJECT: RIGHT PARKING BRAKE CABLE INTERFERENCE WITH FUEL TANK – SAFETY RECALL CAMPAIGN			No: SR-15-009
			DATE: October, 2015
			MODEL: 2014-15 Lancer RAE and Lancer Evolution
CIRCULATE TO:	<input checked="" type="checkbox"/> GENERAL MANAGER	<input checked="" type="checkbox"/> PARTS MANAGER	<input checked="" type="checkbox"/> TECHNICIAN
<input checked="" type="checkbox"/> SERVICE ADVISOR	<input checked="" type="checkbox"/> SERVICE MANAGER	<input checked="" type="checkbox"/> WARRANTY PROCESSOR	<input checked="" type="checkbox"/> SALES MANAGER

PURPOSE

Due to an improper installation of the right parking brake cable on certain 2014 – 2015 Lancer Ralliart Edition and Lancer Evolution models, the cable may have insufficient clearance with the fuel tank, causing abrasive contact between the two components. The coating on the fuel tank could deteriorate from this abrasive contact, and potentially allow for rust formation.

This campaign bulletin instructs dealers to (1) replace the right parking brake cable and (2) inspect the fuel tank. If the fuel tank's coating exhibits damage from abrasive contact with the right parking brake cable, the fuel tank will also be replaced.

AFFECTED VEHICLES

Certain 2014 – 2015 Lancer Ralliart Edition vehicles built February 3, 2014 to September 5, 2014
 Certain 2014 – 2015 Lancer Evolution vehicles built January 31, 2014 – September 5, 2014

IMPORTANT

Affected new or used inventory vehicles must be repaired before the vehicle is delivered. Dealers must check their inventory vehicles' VINs on the Warranty Superscreen to verify whether the vehicle is involved in this recall campaign. It is a violation of Federal law for a dealer to deliver a new motor vehicle or any new or used item of motor vehicle equipment (including a tire) covered by the notification under a sale or lease until the defect or non-compliance is remedied.

CUSTOMER NOTIFICATION

A letter will be sent to all owners of affected vehicles telling them to contact their local Authorized Mitsubishi Motors dealer to have (1) the right parking brake cable replaced, and (2) the fuel tank inspected. If the fuel tank's coating exhibits damage from abrasive contact with the right parking brake cable, the fuel tank will also be replaced. A sample copy of the customer notification letter appears at the end of this bulletin.

REQUIRED OPERATIONS

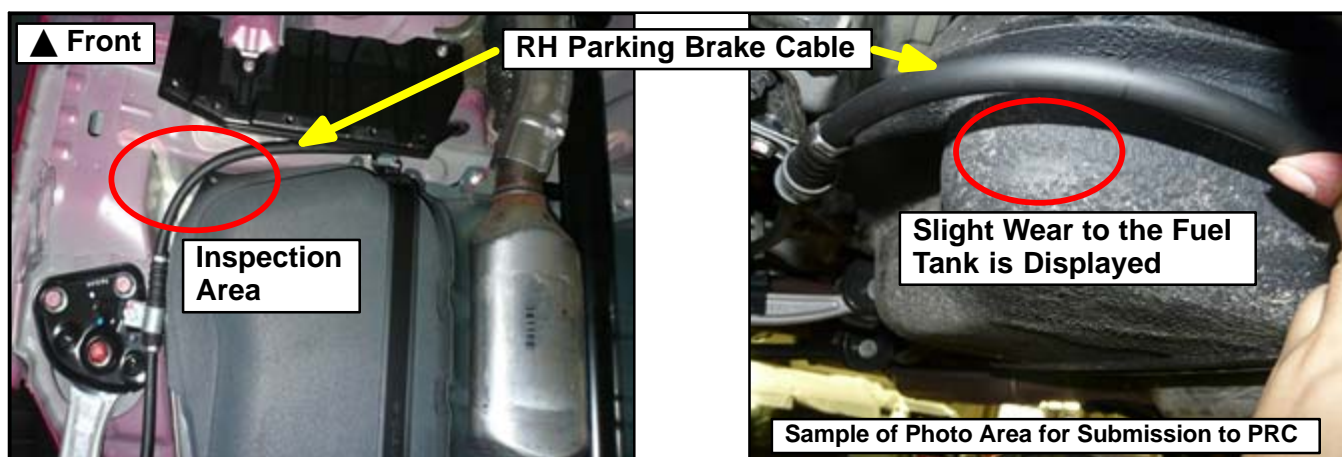
Before starting this campaign procedure, **CHECK THE WARRANTY SUPERSCREEN** to verify if the vehicle is an affected VIN for this campaign and this campaign procedure has not already been completed.

NOTE: A photo of the gas tank **must** be posted to the Photo Required Condition System (PRC) for parking brake cable replacement **AND** parking brake cable and fuel tank replacement.

FUEL TANK INSPECTION PROCEDURE

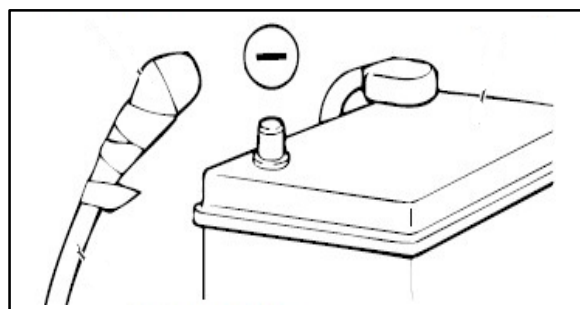
1. Place the vehicle on a lift. Set the gear selector to “P” (Park) in TC-SST equipped vehicles or place the transmission in gear for manual transmission equipped vehicles. **Do not engage the parking brake.**
2. Lift the vehicle and inspect the coating on the fuel tank’s front right corner for damage or wear.

!! IMPORTANT !! Since the parking brake cable may have less tension when the parking brake is engaged, there may be a gap between the fuel tank and the right parking brake cable. Carefully inspect the right parking brake cable and the coating on the fuel tank for damage or wear.



3. Upload photographs of the front right corner of the fuel tank to the Photo Required Condition System (PRC). See sample of area to be photographed above.
4. Lower the vehicle. If TC-SST equipped, place the gear selector to “N” (Neutral).

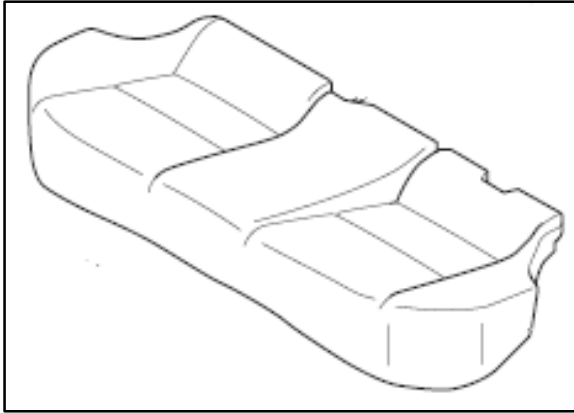
RIGHT PARKING BRAKE CABLE REPLACEMENT PROCEDURE



1. Disconnect the negative (–) terminal of the battery and insulate the disconnected negative (–) cable with electrical tape.

- **For Lancer Evolution only:** To access the battery, open the trunk and remove the trunk room mat, trunk room floorboard, and battery access cover.

REMINDER: If the vehicle is not equipped with the optional OEM navigation unit, please record all radio station presets and reprogram when repair is completed.

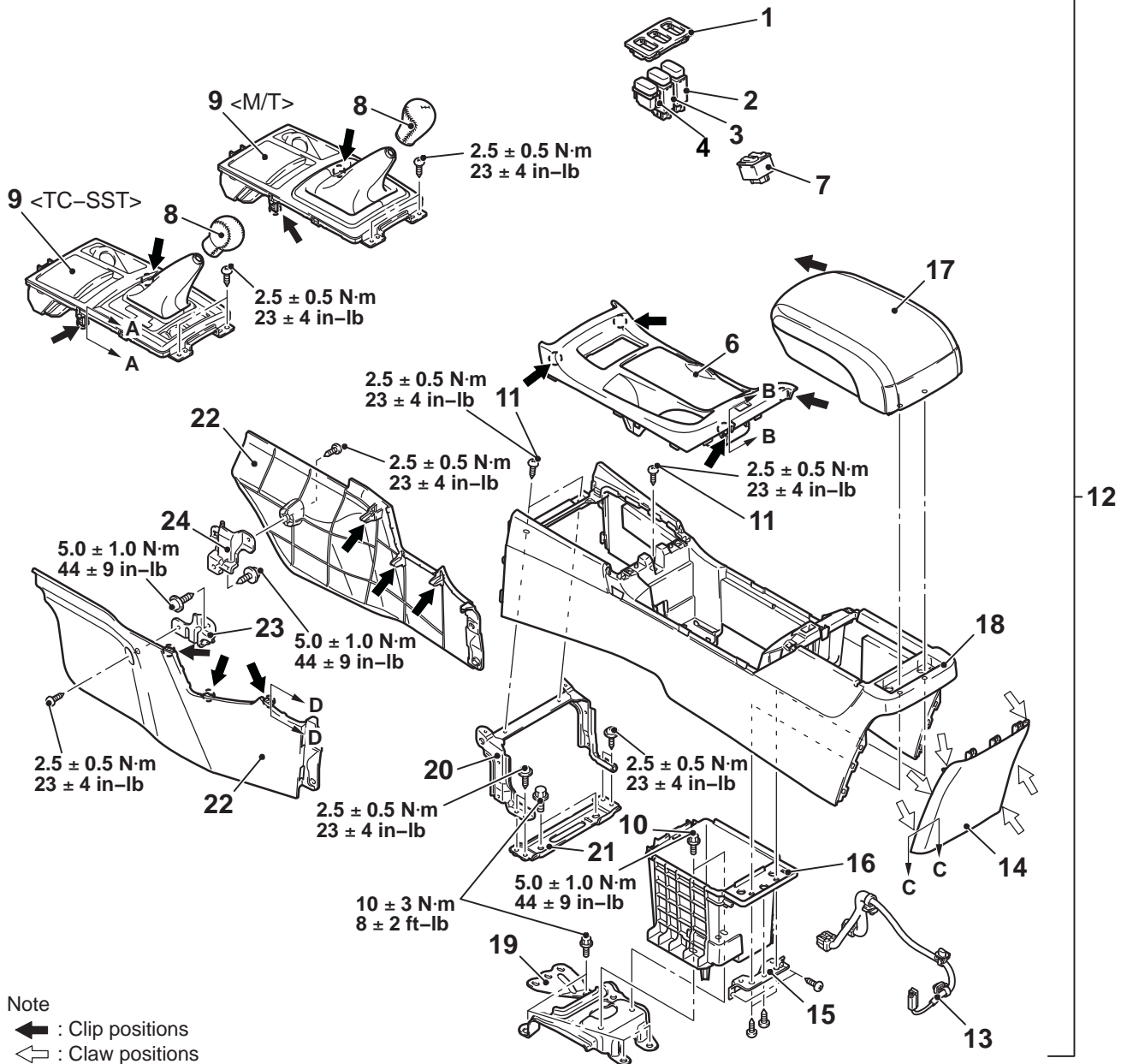


2. Remove the rear seat cushion.

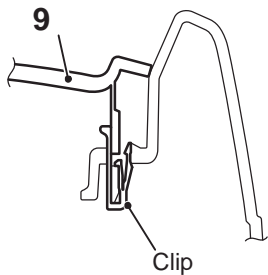
3. [See Figure 1 below] Remove the following components of the floor console assembly:

- a. M/T or TC-SST shift knob (8)
- b. Floor console switch panel (1) and the AWC switch and switch plugs (2) (3) (4)
- c. Floor console panel assembly (9)
- d. Floor console box cup holder (6)
- e. Floor console rear (18)
- f. Floor console box (16)
- g. Floor console harness (13)

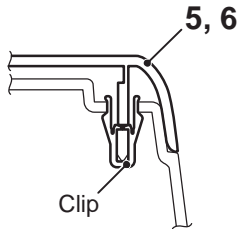
FIGURE 1



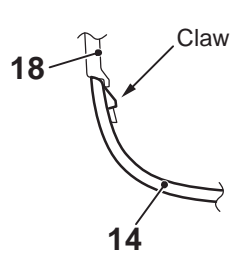
Section A – A



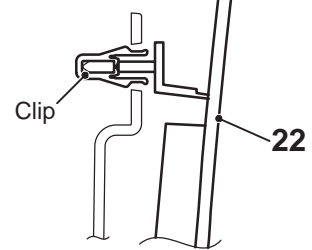
Section B – B

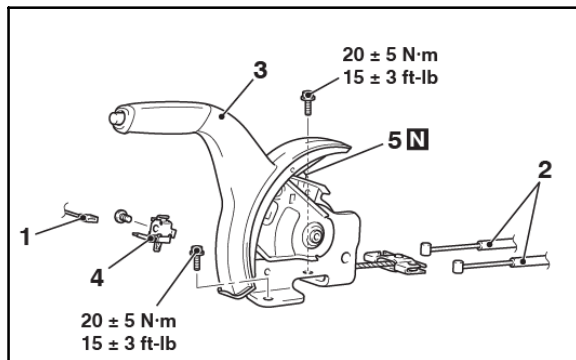


Section C – C

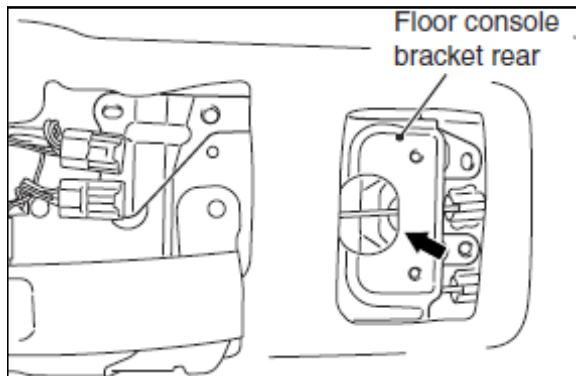


Section D – D





4. Disengage the parking brake lever and loosen the adjusting nut (5).
5. [See Figure 1 above] Remove the floor console bracket rear mounting bolts (19).
6. Disconnect the parking brake switch connector (1) and remove the parking brake lever assembly bolts.



7. Slide the floor console bracket rear, and disconnect the parking brake cable (2) through the hole indicated with an arrow in the figure and remove the RH parking brake cable.

8. Lift the vehicle. Remove the following components from the rear right wheel well:
- Rear right wheel.
 - Bolt securing the rear brake hose to the knuckle (9).

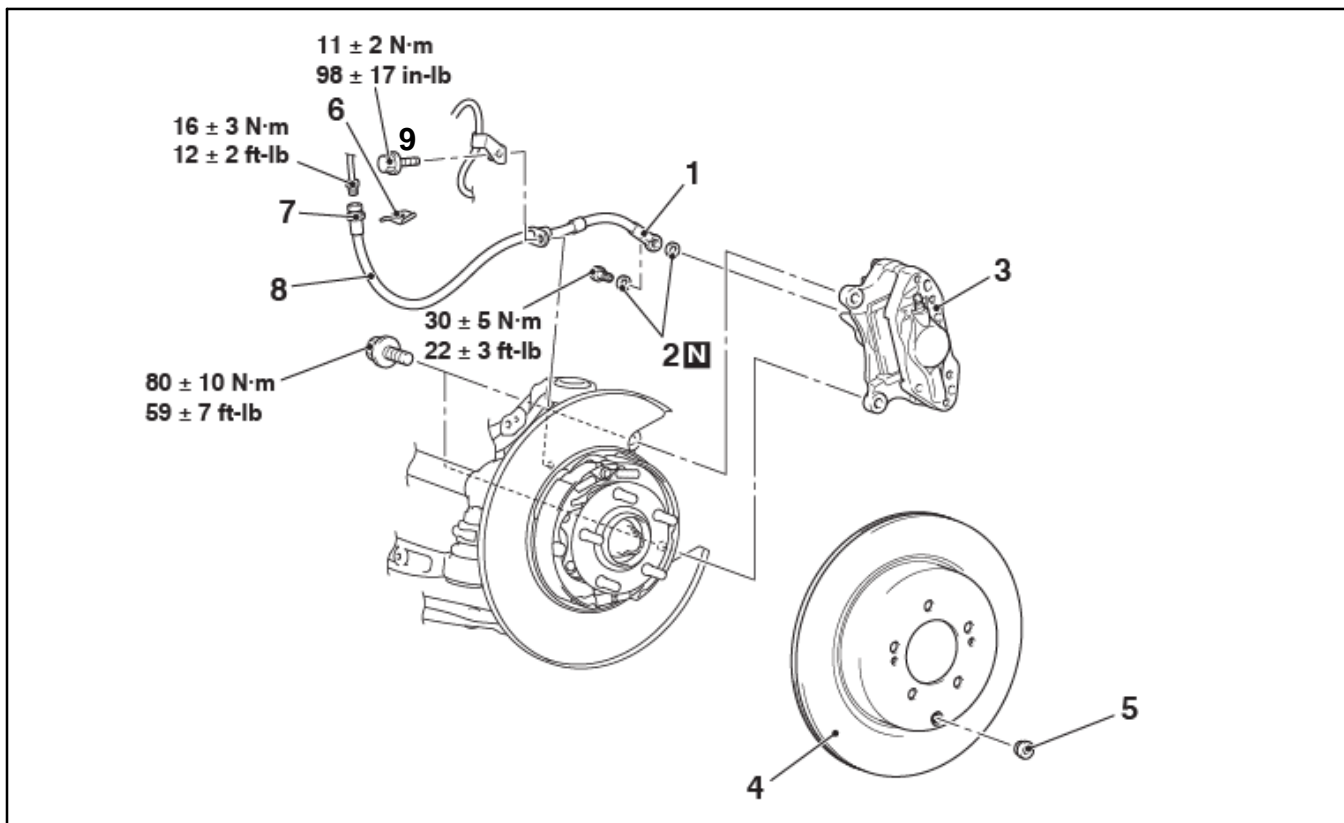
!! IMPORTANT !!

Do not disconnect the brake hose during rear brake caliper assembly removal.

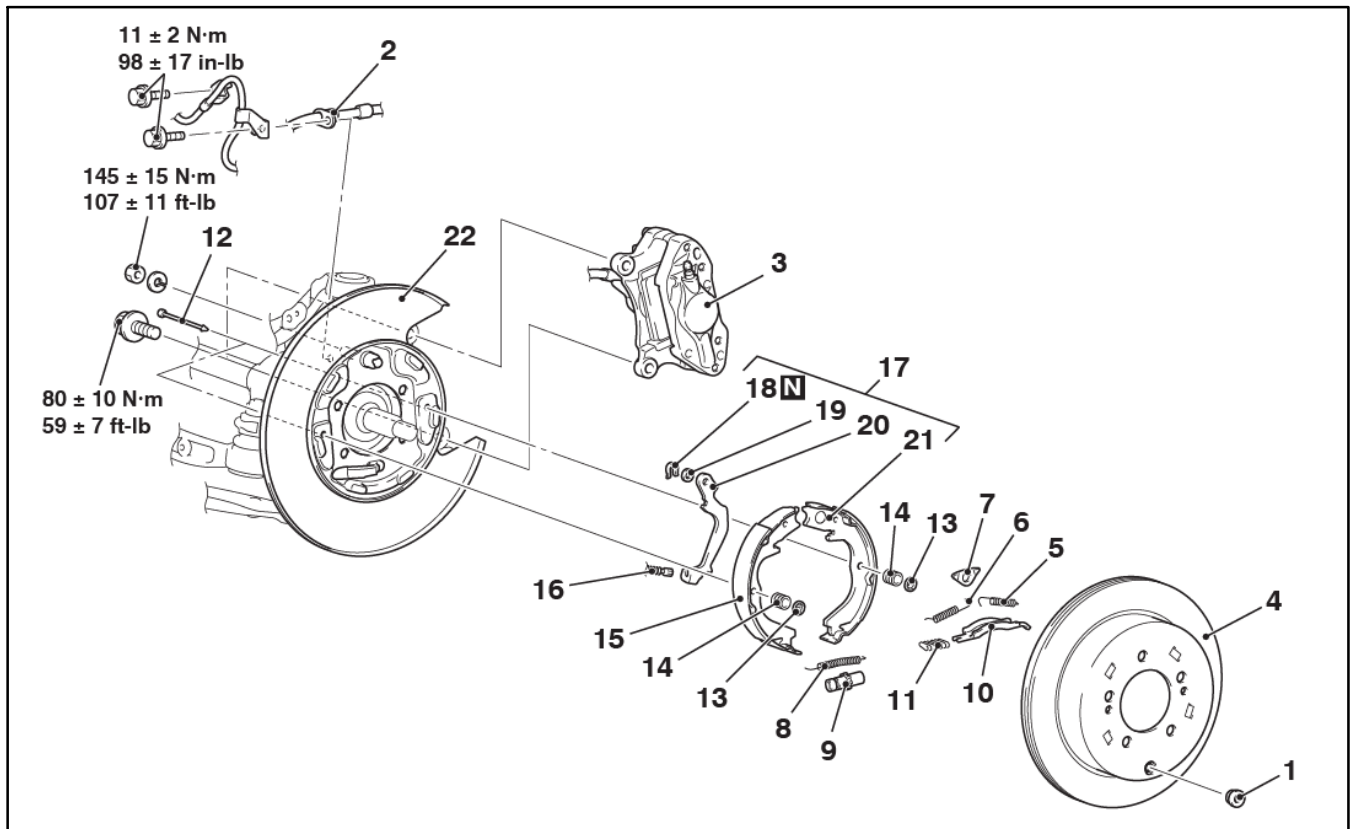
!! IMPORTANT !!

Set aside the rear brake caliper assembly for access and support it with a wire or string.

- Rear brake caliper assembly (3).
- Rear brake disk (4).



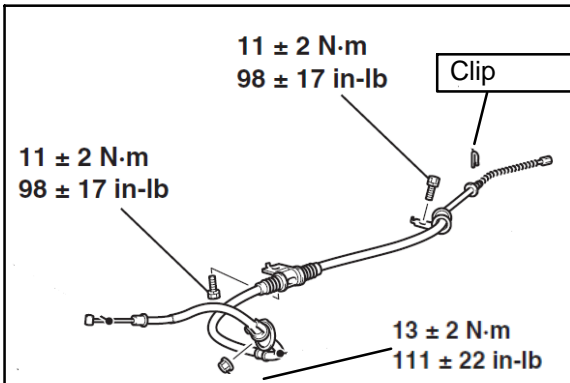
9. Apply commercially available brake cleaner and remove the following components from the rear right parking brake lining and drum:
 - a. Adjusting wheel spring and adjuster assembly (8) (9).
 - b. Shoe hold-down cup, shoe hold-down spring, and shoe hold-down pin (12) (13) (14).
 - c. Strut shoe-to-spring and strut (10) (11).



10. Disconnect the right parking brake cable from the brake assembly.



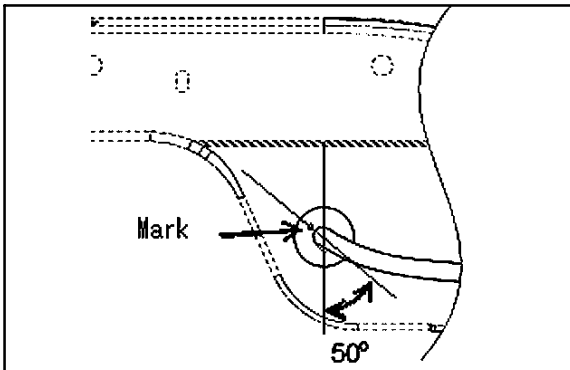
11. Remove the right rear under cover.



12. Replace the right parking brake cable and connect to the rear brake assembly. **Do not tighten the bolts. The right parking brake cable must have some slack during reconnection to the parking brake lever.**

NOTE: During right parking brake cable removal, avoid damaging the grommet (rubber seal). It will be reused.

NOTE: Attach the grommet to the new right parking brake cable prior to installation.

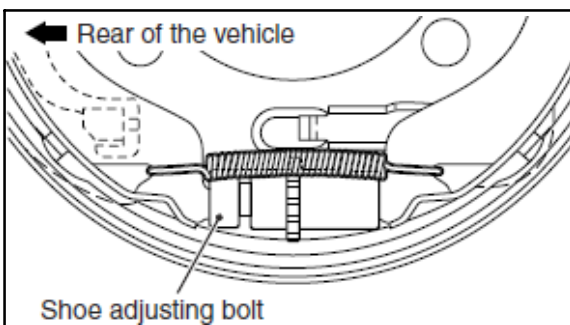


NOTE: Carefully install grommet with mark.

13. Referring to Step 11, reinstall the right rear under cover.

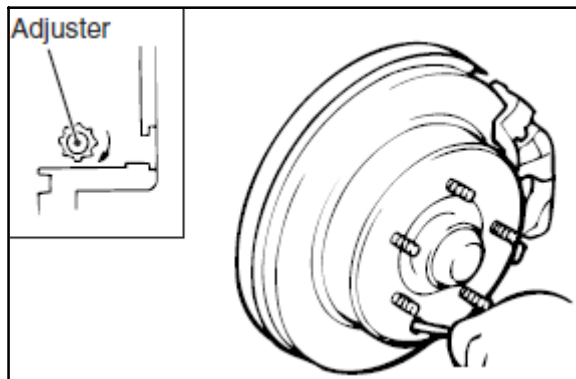
14. Referring to Step 9, reinstall the following components:

- a. Adjusting wheel spring and adjuster assembly (8) (9).



NOTE: Install the adjuster assembly where the shoe adjusting bolt is positioned at the rear of the vehicle.

- b. Shoe hold-down cup, shoe hold-down spring, and shoe hold-down pin (12) (13) (14).
c. Strut shoe-to-spring and strut (10) (11).



15. Reinstall the brake disk and remove the rear brake disk adjusting hole plug. Insert a flathead screwdriver to turn the adjuster in the direction indicated by the arrow (to expand the shoe) until the parking brake shoe makes contact and the disk can be turned. Rotate the adjuster five notches in the opposite direction.

16. Referring to Step 8, reinstall the following components:

- a. Rear brake disk (4).
- b. Unlatch and reinstall the rear brake caliper assembly (3).
- c. Bolt securing the rear brake hose to the knuckle (9).
- d. Rear right wheel.

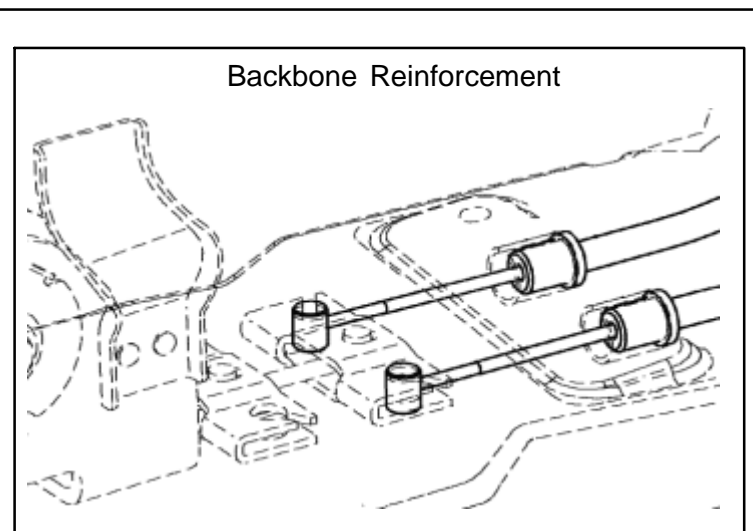
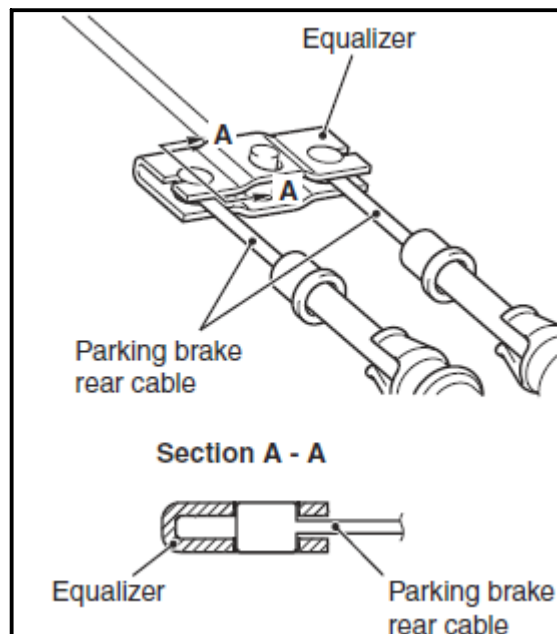
17. Lower the vehicle. Install the rear bolts on the front console bracket rear.



CAUTION

Do not pull out the parking brake cable.

18. Connect the equalizer and the parking brake cable before installing it to the backbone reinforcement.





19. Lift the vehicle. Ensure there is sufficient gap between the fuel tank and right parking brake cable.

20. Refer to Step 12 and torque the right parking brake cable bolts to specification.

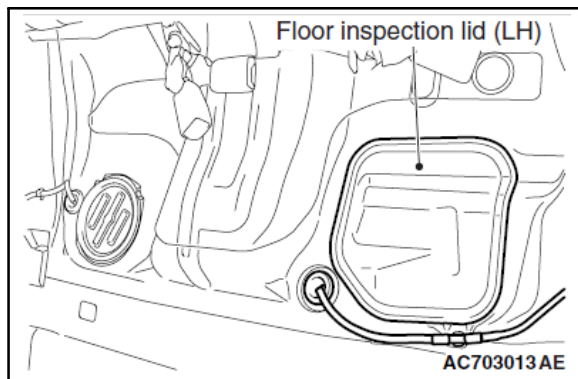


Ensure the parking brake lever notch number is within the standard range. If the notch number is too low, rear brake dragging can occur.

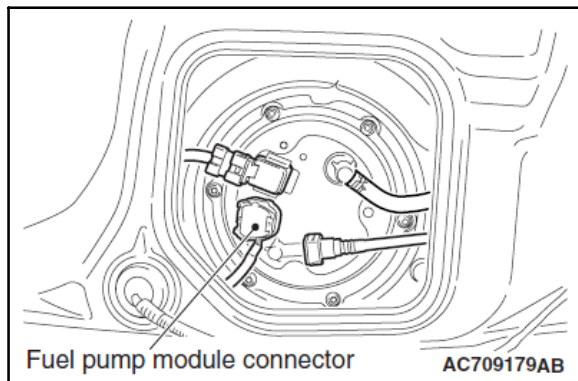
21. Lower the vehicle. Adjust the parking brake lever stroke:
- Attach a spring scale to the center of the parking brake lever grip. Check that the stroke is within standard value (3 to 5 notches) when the parking brake lever is pulled in the vertical direction with a force of approximately 45 pounds (200 N).
 - If the parking brake lever stroke is out of standard range, adjust the parking brake lever stroke to the standard value by turning the adjusting nut. After adjustment, ensure there is no free play between the adjusting nut and the parking brake lever.
22. Reinstall the floor console assembly and rear seat cushion assembly.
- NOTE:** Skip rear seat cushion assembly if damage or wear was found on the coating of the fuel tank.
23. Reconnect the 12V battery. Torque the negative battery terminal to 44 ± 9 in-lb (5 ± 1 N-m).
24. Perform the learning throttle valve control servo:
- Turn the ignition switch to "ON" and then to "LOCK" (OFF) position.
 - Keep the ignition switch in "LOCK" (OFF) for at least 10 seconds.
25. Perform lining seating:
- Set a spring scale to the center of the parking brake lever grip. Then, pull the parking brake lever to the vertical direction of the lever with a force of approximately 22 pounds (100 N).
 - Drive the vehicle at a constant speed of 22–31 mph (35–50 kph) for 328 feet (100 meters).
 - Release the parking brake and let the brakes cool for five to ten minutes.
 - Repeat Steps 25a – 25c four to five times.
26. If the damage or wear to the coating of the fuel tank was visible during the **FUEL TANK INSPECTION PROCEDURE**, continue to the **FUEL TANK REPLACEMENT PROCEDURE** below.
27. If no damage or wear was found on the coating of the fuel tank, reprogram the radio station presets (if not equipped with MMCS Navigation).
For Lancer Evolution: Reinstall the trunk room mat, trunk room floorboard, and battery access cover.

FUEL TANK REPLACEMENT PROCEDURE

Only perform this procedure if damage or wear to the fuel tank coating was photographed and uploaded to the PRC.



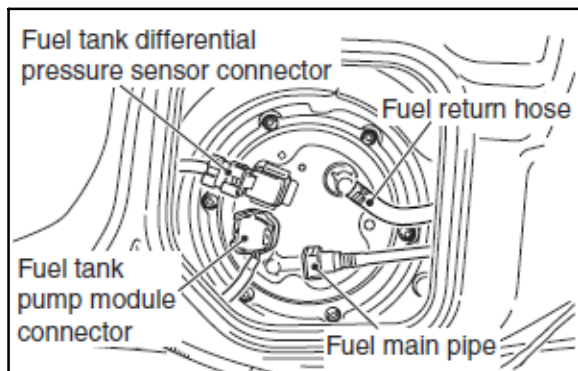
1. Remove the floor inspection lid located under the rear seat cushion.



2. Disconnect the fuel pump module connector.

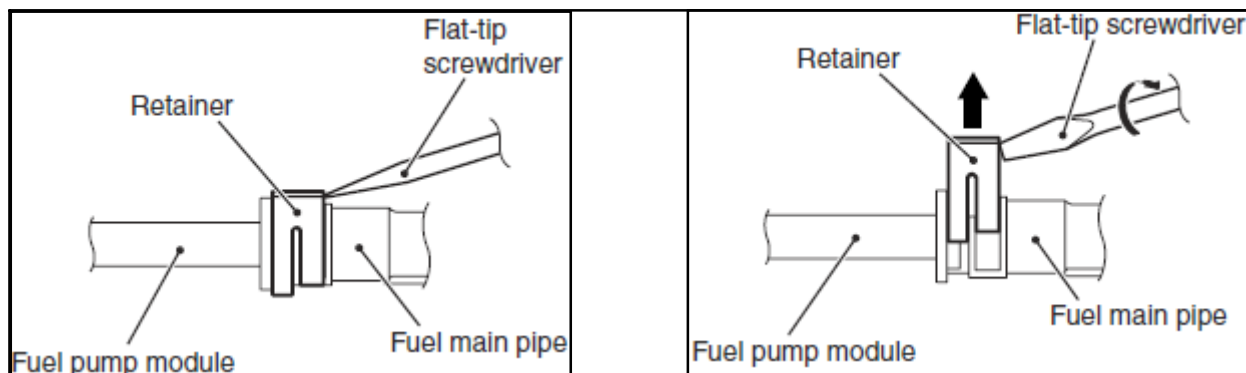
3. Crank the engine for two seconds or more, and turn the ignition switch to the "LOCK" (OFF) position.

!! IMPORTANT !! If the engine starts, wait until the engine stops by itself, then turn the ignition switch to the "LOCK" (OFF) position.

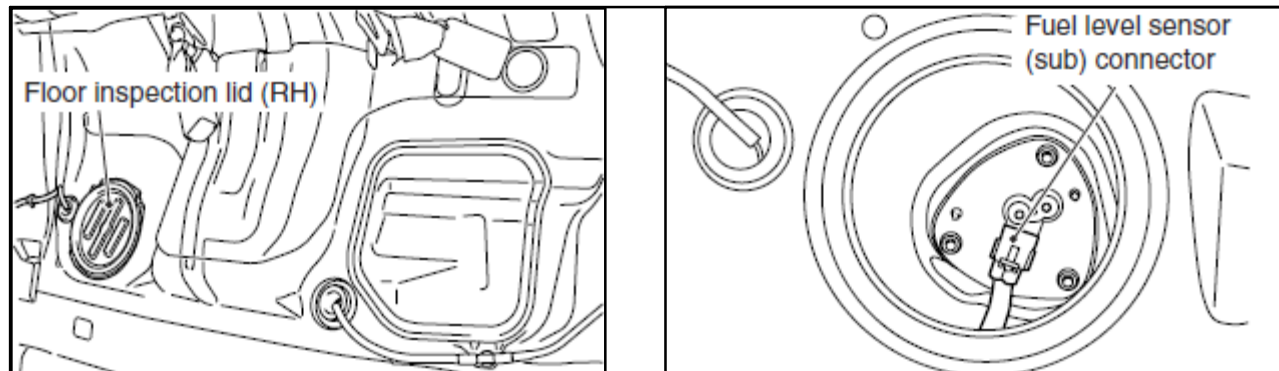


4. Disconnect the fuel tank differential pressure sensor connector and the fuel return hose.

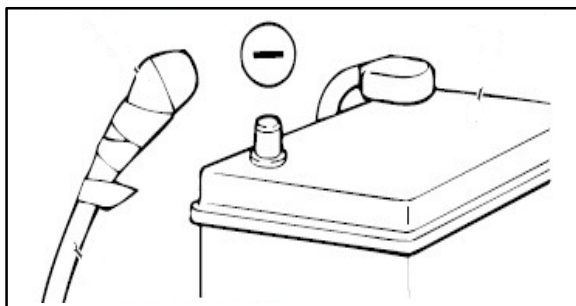
5. Insert a flathead screwdriver into the retainer of the fuel main pipe and turn the flathead screwdriver approximately 90° angle to push up the retainer. Disconnect the fuel main pipe from the fuel pump module.



6. Remove the floor inspection lid (RH), and then disconnect the fuel level sensor (sub) connector.



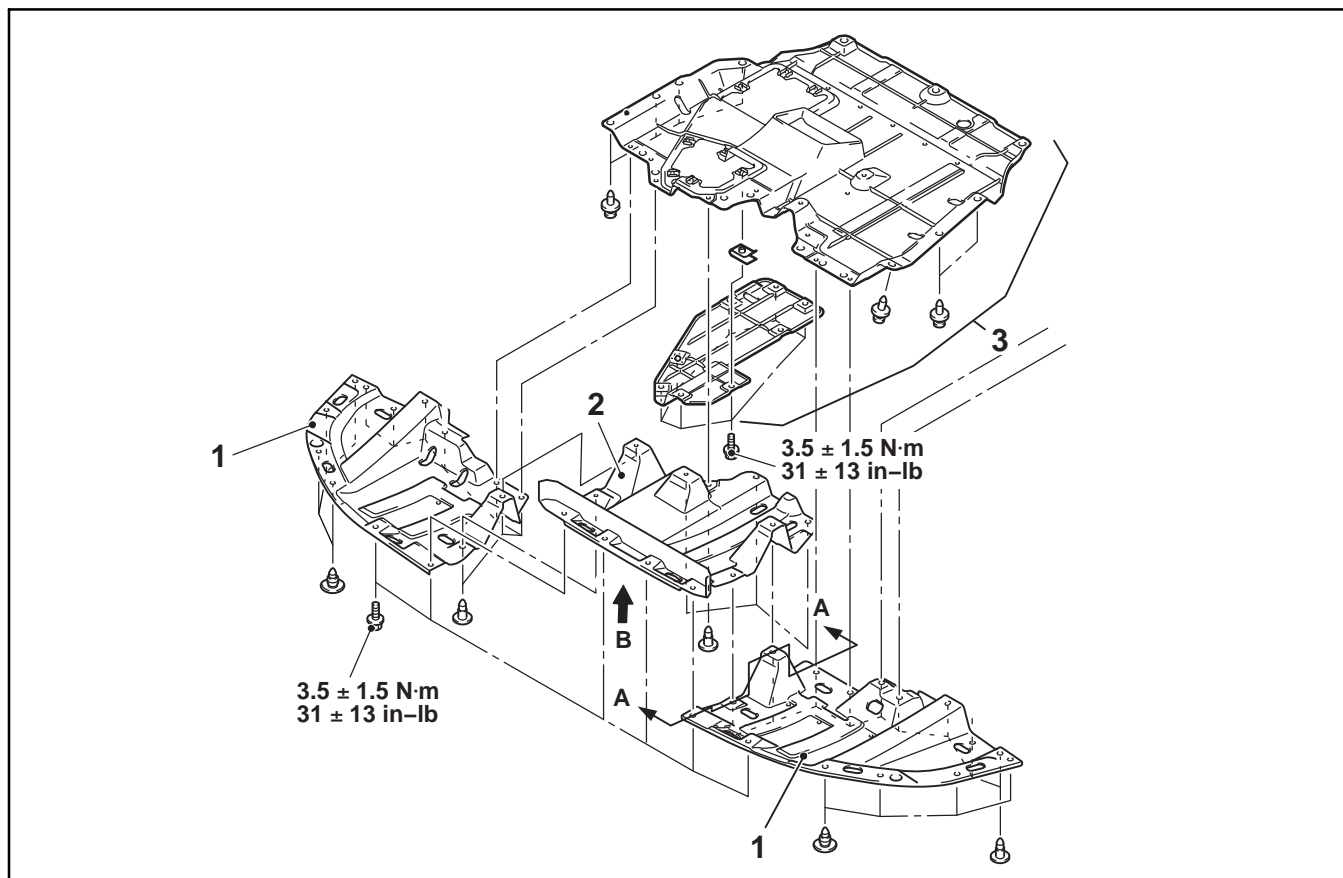
7. Drain the fuel from the fuel tank.



8. Disconnect the negative (-) terminal of the battery and insulate the disconnected negative (-) cable with electrical tape.

9. Set parking brake, and place gear shift selector to Neutral.

10. Remove the engine room under cover front A (1), center (2), and B (3).

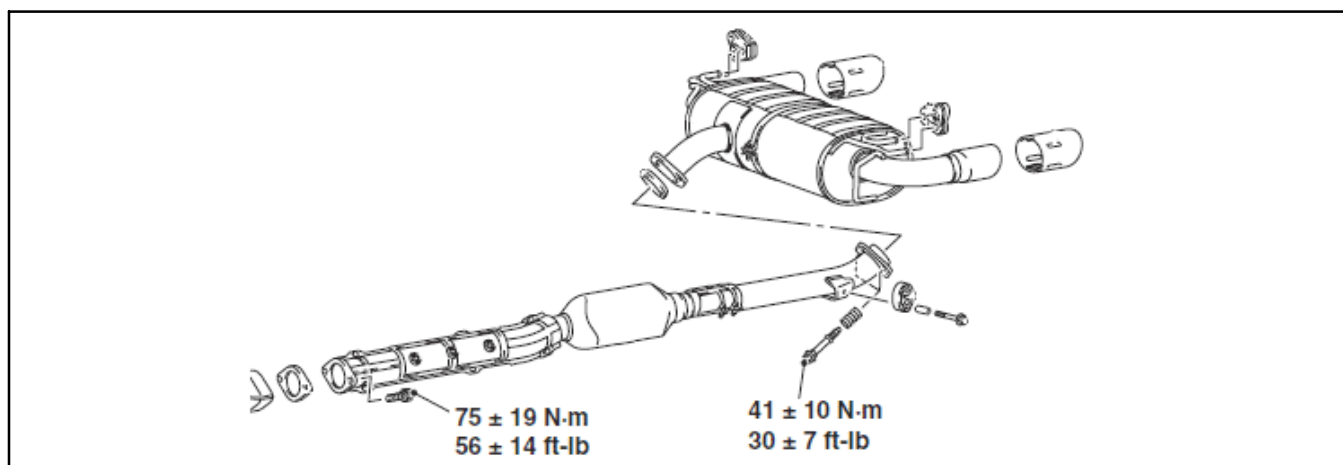


11. Remove the transfer oil drain plug and gasket, and then drain the transfer oil into a clean container.

NOTE: The transfer oil will be reused (0.8 L).

12. After draining the transfer oil, reinstall the drain plug with a new gasket (p/n 3200A102), and torque to 24 ± 1 ft-lb (32 ± 2 N-m).

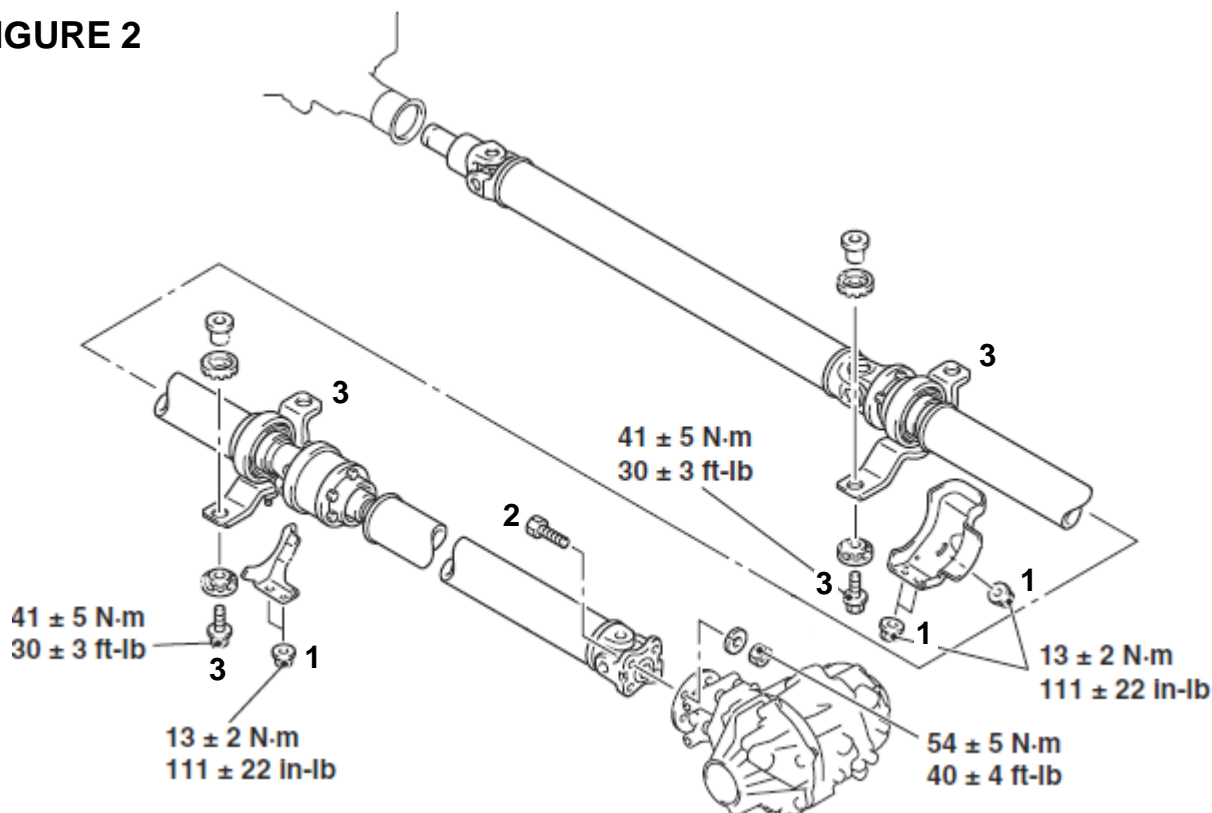
13. Remove the center exhaust pipe.



14. Remove the propeller shaft assembly:

- a. [See Figure 2 below] Remove the heat protectors (1).
- b. [See Figure 3 below] Put mating marks on the flange yoke and the differential companion flange and remove the four connecting nuts (2).
- c. [See Figure 2 below] Remove the four bolts (3).

FIGURE 2



- d. [See Figure 4 below] Insert a rag into the joint boots, and remove the propeller shaft assembly by aligning the front propeller shaft with the rear shaft.

FIGURE 3

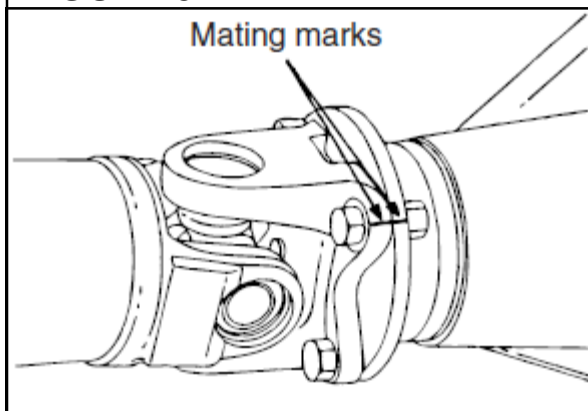
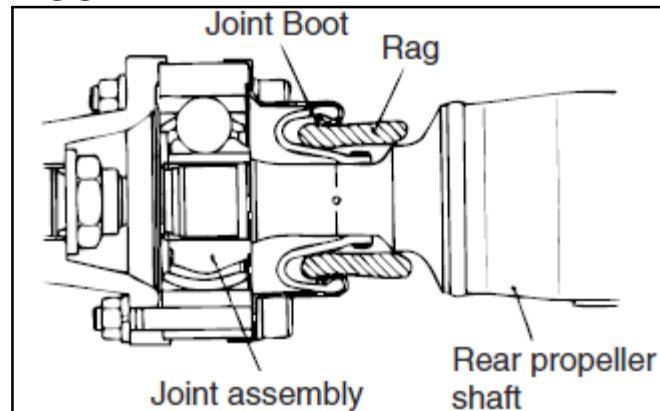
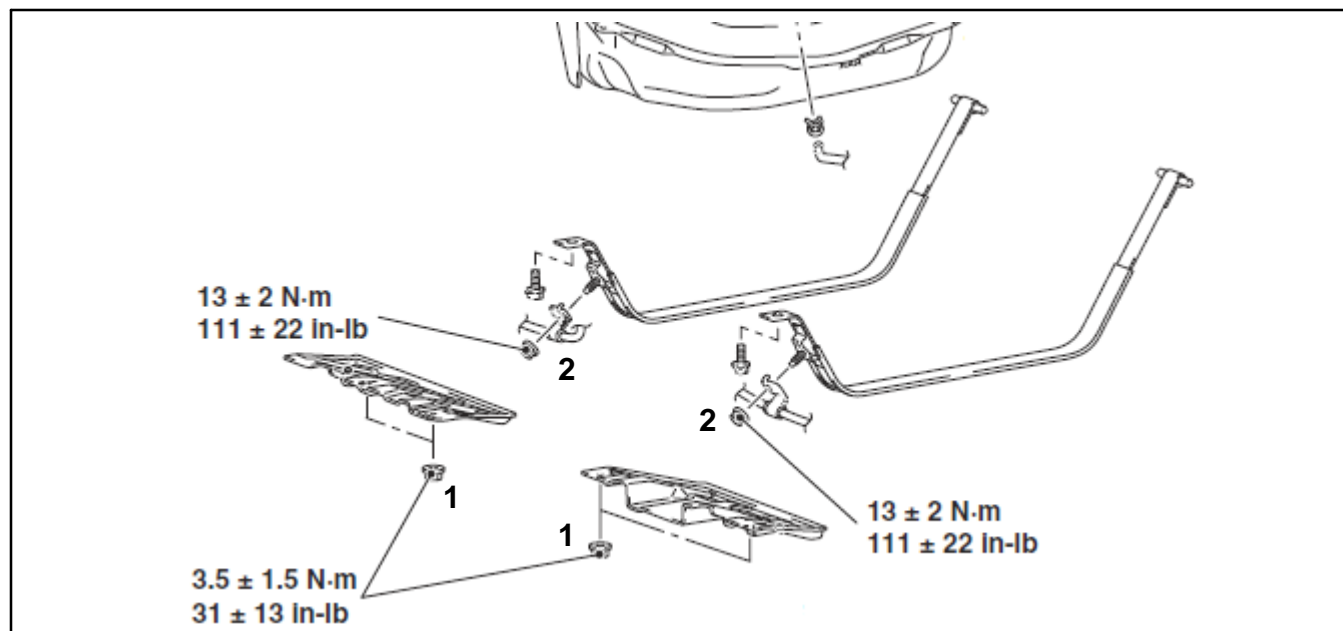


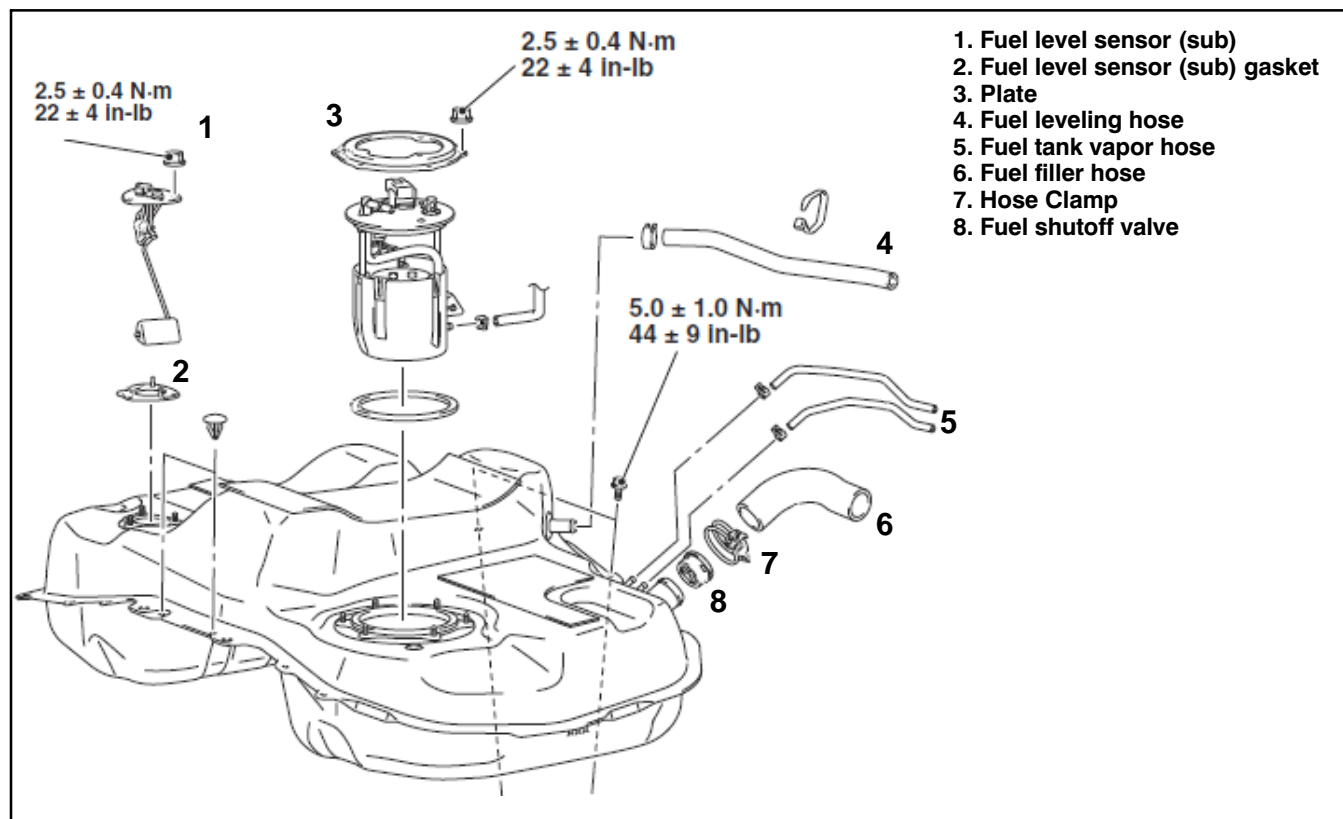
FIGURE 4



15. Remove the front floor under cover (1), and then disconnect the parking brake cable clamp (2).

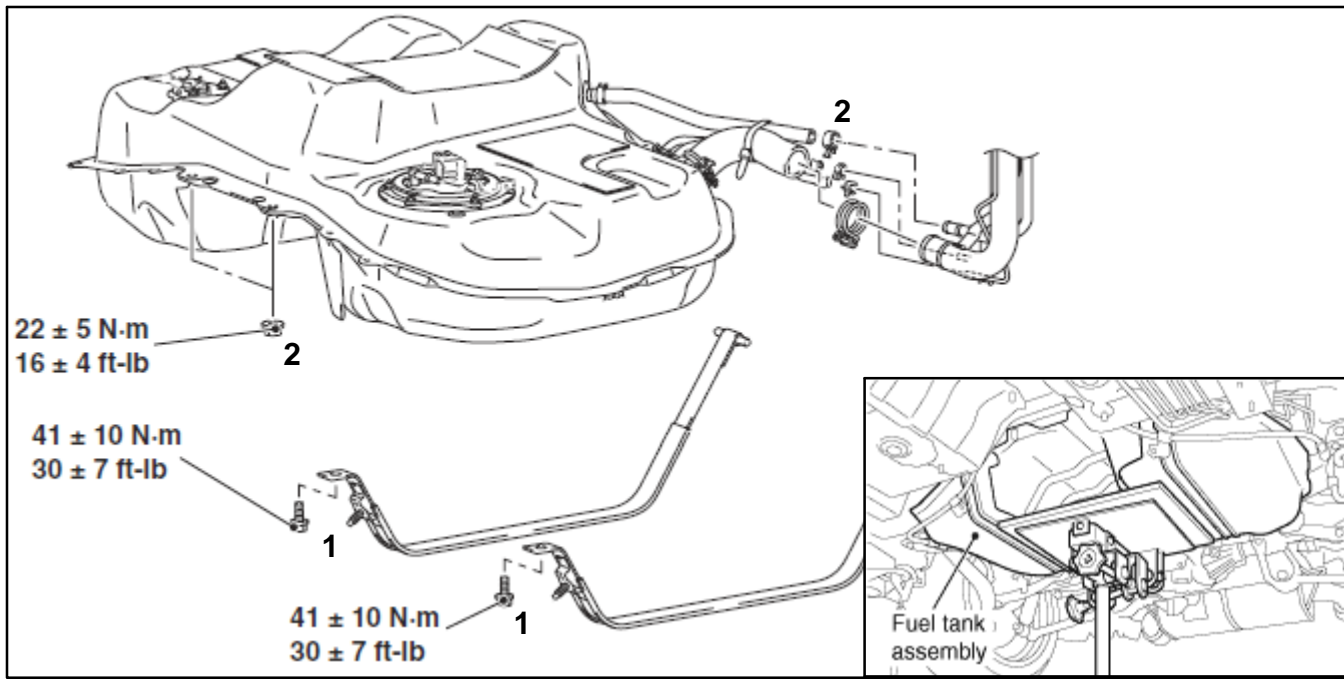


16. Disconnect the fuel filler hose (6), the fuel leveling hose (4), and the fuel tank vapor hoses (5).



17. Remove the fuel tank assembly.

- a. Support the fuel tank assembly with a transmission jack.
- b. Remove the fuel tank band bolts (1) and fuel tank assembly nuts (2).



⚠ CAUTION

During fuel tank assembly removal, avoid impacting the rear differential carrier.

- c. Tilt the fuel tank assembly and remove it while avoiding the rear differential carrier.

⚠ CAUTION

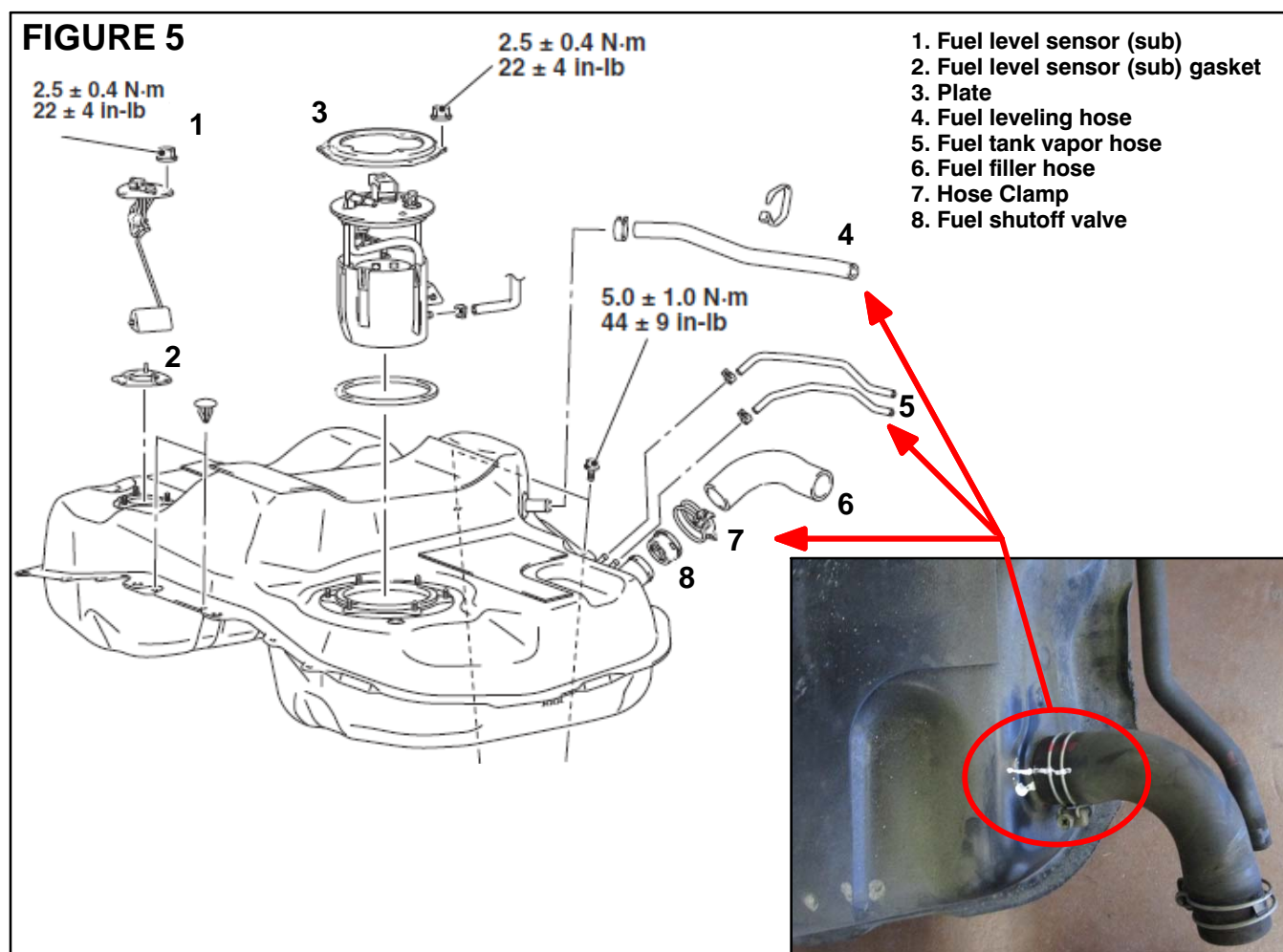
When removing the fuel level sensor (sub) from the fuel tank, be careful not to damage the gauge unit and float.

18. [See Figure 5 below] Remove the following components from the fuel tank assembly:

1. Fuel level sensor (sub)
2. Fuel level sensor (sub) gasket
3. Plate
4. Fuel leveling hose
5. Fuel tank vapor hose
6. Fuel filler hose
7. Hose Clamp
8. Fuel shutoff valve

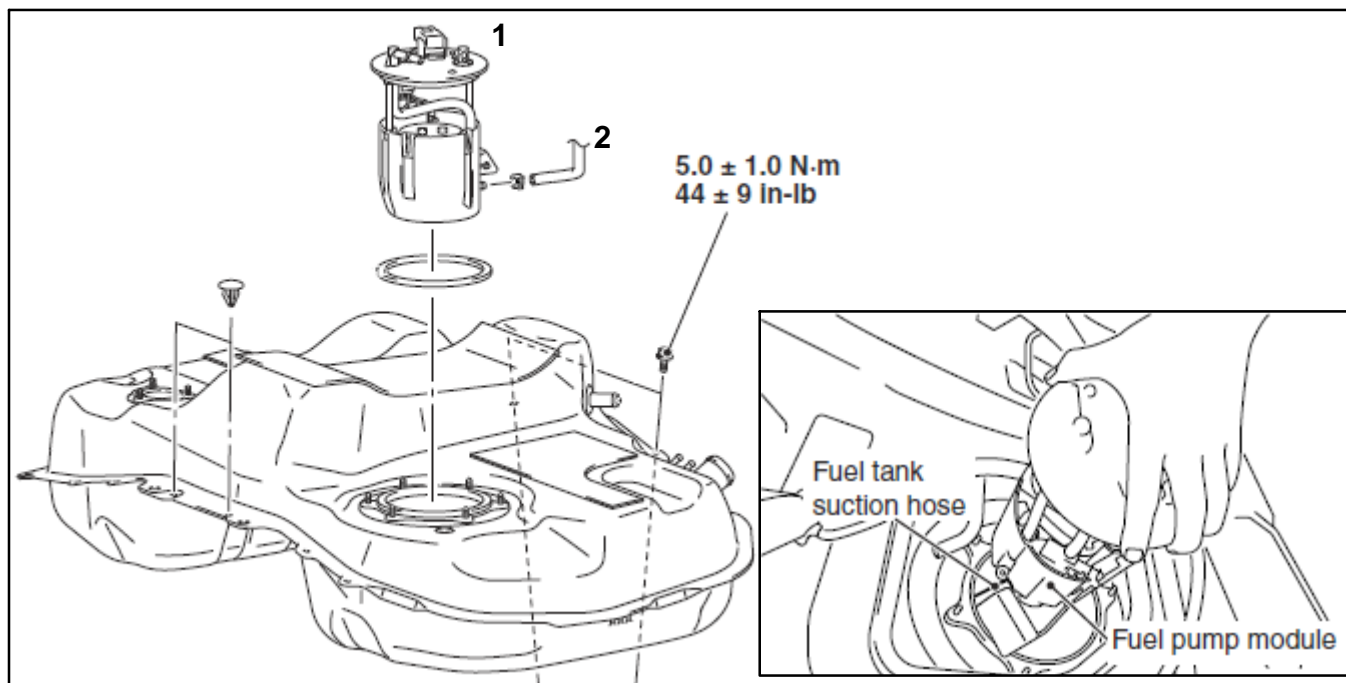
!! IMPORTANT !! Mark the hoses and clamps (4) (5) (6) (7) as shown for realignment during reinstallation.

NOTE: During reinstallation, torque nuts to 22 ± 4 in-lb (2.5 ± 0.4 N-m).

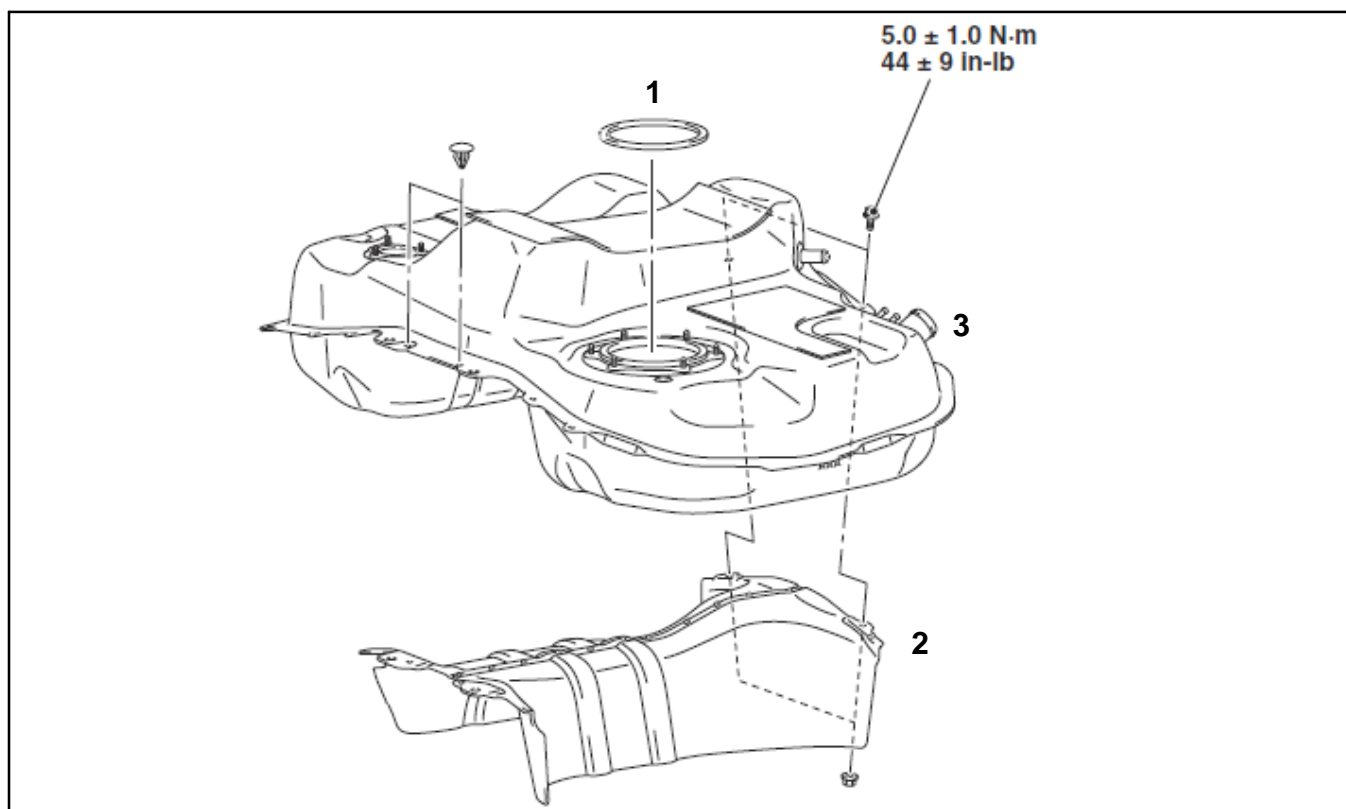


When removing the fuel pump module from the fuel tank, be careful not to damage the gauge unit and float.

19. During fuel pump module removal (1), ensure the fuel tank suction hose (2) is disconnected.

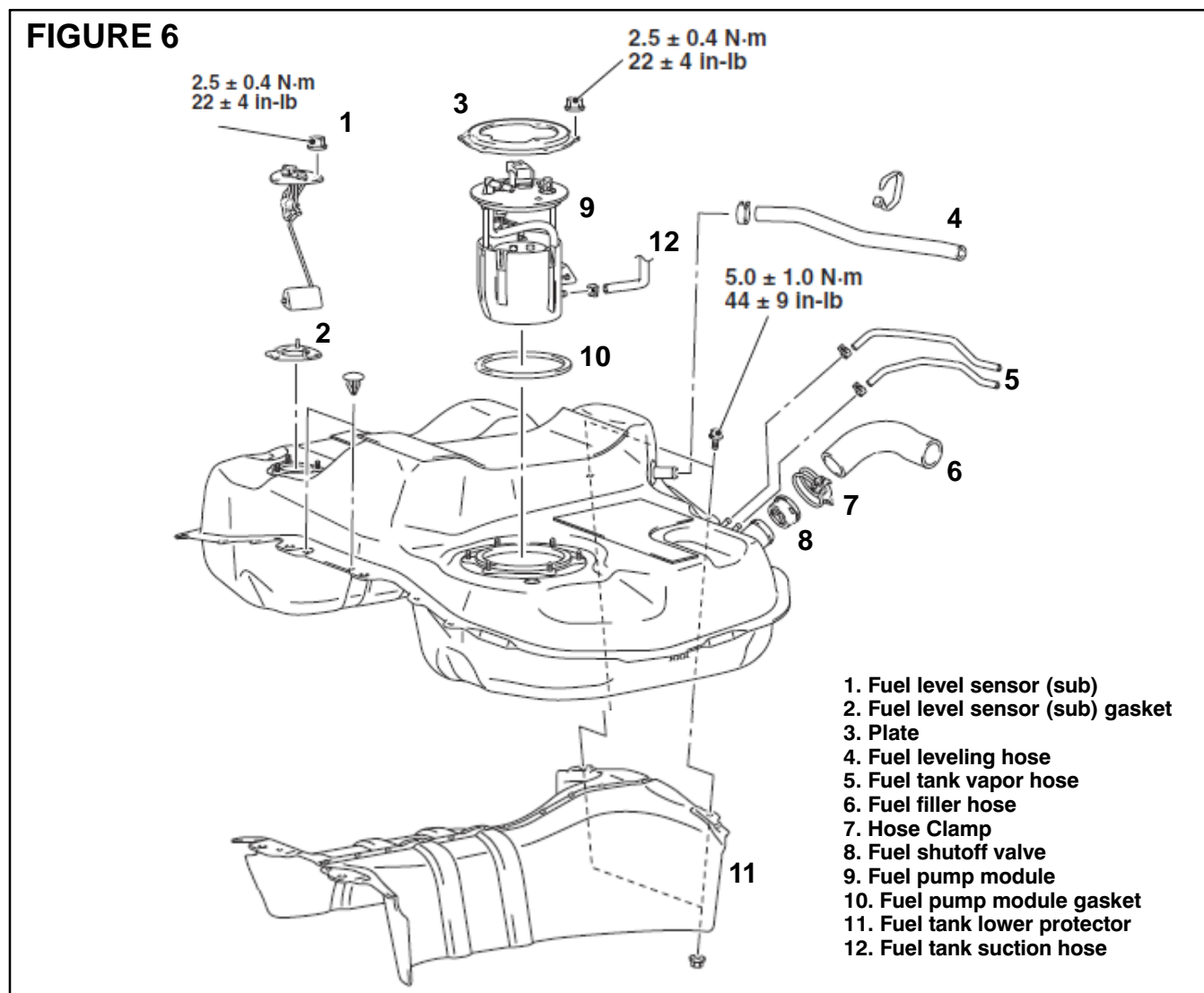


20. Remove the fuel pump module gasket (1) and the fuel tank lower protector (2), and then remove the fuel tank (3).



21. [See Figure 6 below] Reinstall the following components to the replacement (new) fuel tank:

- | | |
|-----------------------------------|-------------------------------|
| 1. Fuel level sensor (sub) | 7. Hose Clamp |
| 2. Fuel level sensor (sub) gasket | 8. Fuel shutoff valve |
| 3. Plate | 9. Fuel pump module |
| 4. Fuel leveling hose | 10. Fuel pump module gasket |
| 5. Fuel tank vapor hose | 11. Fuel tank lower protector |
| 6. Fuel filler hose | 12. Fuel tank suction hose |



CAUTION

When installing the fuel level sensor (sub) (1), be careful not to damage the gauge unit and float.

CAUTION

When installing the fuel pump module (9), ensure that the moving parts of the gauge work smoothly.

CAUTION

Make sure to connect the fuel tank suction hose (12) to the fuel pump module (9).

!! IMPORTANT !!

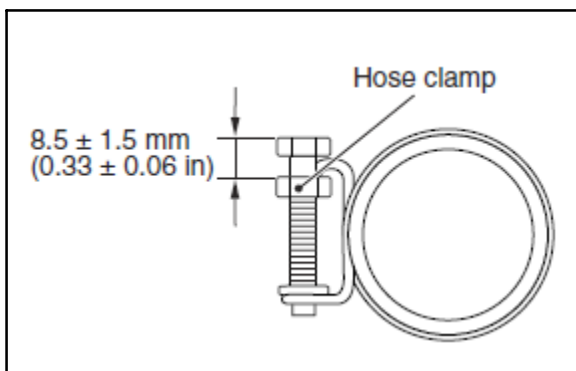
Realign the hoses and clamps according to the markings made from Step 18.

!! IMPORTANT !!

Replace the fuel level sensor (sub) gasket (2) with a new part (p/n MN106047).

!! IMPORTANT !!

Replace the fuel pump module gasket (10) with a new part (p/n MN139931).



NOTE: Connect the fuel filler hose (6) and tighten the bolt of the hose clamp (6) so that the bolt tightening dimension of the hose clamp is $0.33 \pm 0.06 \text{ in}$ ($8.5 \pm 1.5 \text{ mm}$).

22. Install the assembled fuel tank.

23. Reinstall the propeller shaft assembly.

⚠ CAUTION

Do NOT damage the oil seal lip of the transfer unit during propeller shaft assembly reinstallation.

!! IMPORTANT !!

Coat the transfer case inserting points with Genuine Mitsubishi Motors LSD gear oil.

NOTE: The mounting bolt and nut may be loosened if oil or grease is stuck on the threads. Tighten them after degreasing the threads.

NOTE: If the joint assembly is bent, it may be damaged when pinching the joint boots.

NOTE: Align the mating marks during reinstallation.

24. Reinstall the center exhaust pipe.

!! IMPORTANT !!

Replace the seal ring and exhaust pipe gasket with a new part (p/n MR450710, MR529714).

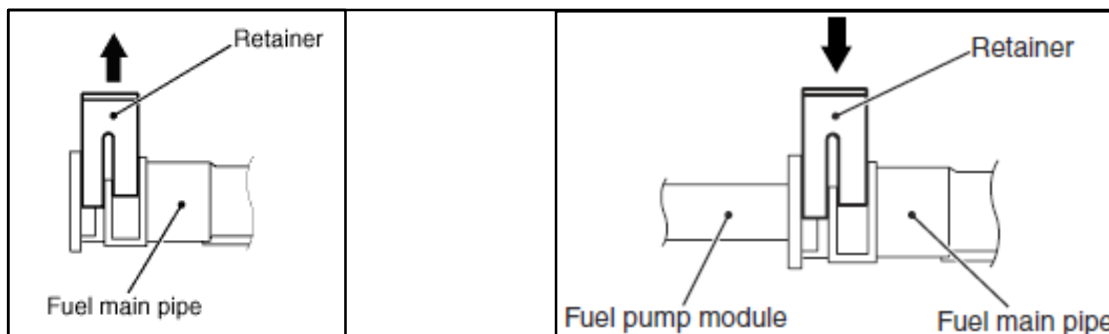
25. Refill the transfer case with the previously extracted oil (0.8 L). Install the filler plug with a new gasket (p/n MF660036) and torque to $24 \pm 1 \text{ ft-lb}$ ($32 \pm 2 \text{ N-m}$).

26. Reinstall the following components:

- a. Engine room under cover front A
- b. Engine room under cover front center
- c. Engine room under cover front B

27. Reconnect the main pipe and fuel pump module.

- a. Push up the retainer of the fuel main pipe and securely connect the fuel main pipe connector to the fuel pump module. Push down the retainer of the connector to firmly lock it in place. After installation, slightly pull the fuel main pipe to ensure the connection is secure. Also check that there is approximately 1 mm (0.04 in.) of play.



- b. Connect the fuel tank differential pressure sensor connector and the fuel pump module connector and install the floor inspection lid.

28. Reinstall the rear seat cushion assembly.

29. Reconnect the 12V battery. Torque the negative battery terminal to 44 ± 9 in-lb (5 ± 1 N-m). Reprogram the radio station presets (if not equipped with MMCS Navigation).

For Lancer Evolution: Reinstall the trunk room mat, trunk room floorboard, and battery access cover.

30. Place gear shift selector to Park.

31. Refill the fuel.

32. Perform the learning throttle valve control servo:

- a. Turn the ignition switch to "ON" and then to "LOCK" (OFF) position.
- b. Keep the ignition switch in "LOCK" (OFF) for at least 10 seconds.

33. Road test the vehicle to confirm vehicle is operating properly.

34. Place the vehicle on a lift and ensure there is no fuel leaking from the undercarriage.

PARTS INFORMATION

Use the genuine Mitsubishi Parts listed below.

Parking Brake Cable Replacement

Vehicle Applicability	Description	Part Number	Qty
2014–15 Lancer Evolution	Parking Brake Cable (Right Side)	MW400184	1
2014–15 Lancer Ralliart Edition	Parking Brake Cable (Right Side)	MW400183	1

Fuel Tank Replacement


Vehicle Applicability	Description	Part Number	Qty
2014–15 Lancer Evolution, Ralliart	Fuel Tank	MW400186	1

Gasket Kit (required in case of Fuel Tank Replacement)


Vehicle Applicability	Kit Part Number	Qty	Kit Contents	
			Part Name	Position
2014–15 Lancer Evolution, Lancer Ralliart	MW400189	1	Packing	Fuel Level Sensor (Sub)
			Packing	Fuel Pump Module
			Ring, Seal	Exhaust Pipe
			Gasket	
			Gasket	Transfer Oil Filler
			Gasket	Transfer Oil Drain

WARRANTY INFORMATION

There are 2 possible repair scenarios. Review the scenario by model type. You may only claim 1 scenario.

#	Lancer Evolution and Lancer Ralliart	Campaign Operation Numbers
1	Replace and reroute parking brake cable - Inspect Fuel Tank = OK	C1510W01 

OR

#	Lancer Evolution and Lancer Ralliart	Campaign Operation Numbers
2	Replace and reroute parking brake cable - Inspect Fuel Tank = NG - Repla	C1510W02 

Warranty/Recall Campaign Claim Information

Enter all claims as claim type 'C' – Recall/Campaign Claims

NOTE: PRC PHOTO POSTING REQUIRED FOR ALL CLAIMS.

Please follow the campaign instructions when entering each claim in order to select the operation code that correctly matches up with the work that was actually performed. A claim example is provided below.

Certain 2014–2015 MY Lancer Evolution and Lancer Ralliart models

Claim Header Section: Parking Brake Cable Realignment and Fuel Tank Inspection

MITSUBISHI DEALER LINK Service Warranty Help

Claim Entry Vehicle Information PQR/VQR

Campaign Information

Campaign Operation No: C1510W__

Miles/Km: 85,000

VIN: JA.....

Service Technician: [Redacted]

Spec Value * [Redacted] Duplicate Recall * ☐

Dealer: 99320 Ref No: [Redacted] VIN: [Redacted]

Claim No: [Redacted] Adj: [Redacted] Claim Status: Incomplete Model and Year: [Redacted]

Enter in the first 6 characters of this campaign labor operation: **C1510W.**

This campaign is for the replacement of the right side parking brake cable and inspection of the fuel tank on 2014-2015MY Lancer Evolution and Lancer Ralliart models.

Check the "Open Recall" area of the Superscreen each time to be certain of a vehicle's eligibility. Only specific VINS showing **C1510W** as open are involved in this campaign.

After entering the required customer data, vehicle information, and applicable campaign labor operation number, depending on the "Repair Performed" scenario that is selected from the menu, hitting the **"Save and Continue"** button will automatically fill-in several fields. **Please note that there are 2 possible repair scenarios.**

CAMPAIGN INFORMATION				Campaign Labor Operations	
Campaign Operation No	C1510W	Involved Lancer Evolution and Ralliart VINs	Repair Performed	C1510W01	C1510W02
Miles / KM	85,000		Repair Order No	EX12345	
VIN	JA32V6FVXE069041	Repair Date In	10 / 30 / 2015	Repair Date Out	10 / 30 / 2015

Campaign Claim Example:



NOTE: At least 2 photos are required to be posted of the fuel tank on the vehicle to the PRC, as instructed in the TSB, for ALL claims — even when the tank is not being replaced.

Post photos as Repair Type “RECALL PHOTO/DOCS SUPPORT” in the PRC.

Photos Required Condition List

Repair Type	RECALL PHOTO/DOCS SUPPORT
Country	ALL
Search	Ref
d/or directions fro	BREMBO CALIPER/NOT FOR RECALL
Yr	CONVERTIBLE TOP
Repair O	DP/SM/ZONE REVIEW REQUIRED
	ENDEAVOR ROOF RACK PAINT
	GLASS
	HEADLAMPS
	INTERIOR/DASH INST. PANEL
	PAINT DELAM INSPECT
	PAINT/BODY/HEADLINER
	PROD SUPPORT REQUEST PIX/DOCS
	RECALL PHOTO/DOCS SUPPORT
	RUST/PERFORATION CORROSION

NOTE: A parking brake cable is necessary for all models. Replace the fuel tank only if inspection indicates replacement is necessary.

MITSUBISHI DEALER LINK

Service Warranty

Recall Claim

Claim Entry Vehicle Information Corporate e-Reports DMS Interface PQR/VQR PRC Center

Vehicle Step 2: Parts Labor PWA Review

dd Page - Parts Information

ehicle Page Completed; Claim Status is Incomplete.


Delete	Part No	Part Description	Qty	Unit Price	Part Amount	Primary
1	Lancer Evolution	MW400184	Parking Brake Cable	1 - Required		<input checked="" type="radio"/>
2	Lancer Ralliart	MW400183	Parking Brake Cable	1 - Required		<input type="radio"/>
3	Lancer EVO and Ralliart	MW400186	Fuel Tank	1 - If Needed		<input type="radio"/>
4	Lancer EVO and Ralliart	MW400189	Fuel Tank Gasket Kit	1 - If Needed		<input type="radio"/>

Labor:

Follow the chart below to select the appropriate campaign labor operation. These operations will appear on the drop-down.



NOTE: At least 2 photos of the inspected fuel tank area are required to be posted to the PRC for all repairs. Photos must be on file PRIOR to claim submission.

	Campaign Number: C1510W		Parking Brake Cable Replacement and Tank Inspect	
	Campaign Operations - Select from Claim Drop Down Menu		Labor Times by Model	
	Select the repair actually performed and the corresponding operation scenarios and times shown below. Check the repair order to be sure you are selecting the correct repair. Photos required for both scenarios.			
				
	Repair Description	Operation Scenario	Lancer Evolution	Lancer Ralliart
#1	Replace and reroute parking brake cable - Inspect Fuel Tank = OK	C1510W01	1.4 hrs.	
#2	Replace and reroute parking brake cable - Inspect Fuel Tank = NG - Replace	C1510W02	3.4 hrs.	

Other Charges:

In some cases, towing and/or a rental car may be necessary. The lower portion of the labor entry screen has the fields that must be filled in if there are such charges.

Special Sublet Selection				
Select	Labor Operation	Labor Operation Description		Amount
<input type="checkbox"/>	SHO	SPECIAL HANDLING ORDER	SHO Parts Order	
<input type="checkbox"/>	RENTACAR	RENTAL CAR CHARGES	Days <input type="text"/> Reason <input type="text"/> <input type="button" value="Select one"/>	
			Rental Company <input type="text"/> Invoice Number <input type="text"/>	
<input type="checkbox"/>	95300040	FREIGHT CHARGES	Freight Company <input type="text"/> Invoice Number <input type="text"/>	
<input type="checkbox"/>	95200040	TOWING CHARGES	Towing Company <input type="text"/> Invoice Number <input type="text"/>	



IMPORTANT SAFETY RECALL

Mitsubishi Motors North America, Inc.
6400 Katella Avenue
Cypress, CA 90630
Telephone: 714-372-6000
www.mitsubishicars.com

This notice applies to your vehicle, _____.

This notice has been sent to you in accordance with the National Traffic and Motor Vehicle Safety Act.

Date: October, 2015

Dear Mitsubishi Owner,

Reason for notice: Mitsubishi Motors North America, Inc. (MMNA) has decided that a defect which relates to motor vehicle safety exists in certain 2014 – 2015 Lancer Ralliart and Lancer Evolution vehicles. Due to an installation error, the right parking brake cable may have insufficient clearance with the fuel tank, causing abrasive contact between the two components. The coating on the fuel tank could deteriorate from this abrasive contact and potentially allow for rust formation.

Rusting could cause a pin hole to develop in the fuel tank and allow for fuel leakage, which increases the risk of fire in the presence of an ignition source.

What you should do: Please contact your local Authorized Mitsubishi Motors dealer and schedule an appointment to have the recall remedy performed on your vehicle. When you bring your vehicle in, please show the dealer this letter. (If you misplace this letter, the dealer will still make this inspection/repair to your vehicle, free of charge.)

What your dealer will do: The dealership will replace the right parking brake cable and inspect the fuel tank. If the fuel tank's coating exhibits damage from abrasive contact with the right parking brake cable, the fuel tank will also be replaced.

How long will it take? The time needed for right parking brake cable replacement is approximately 1.5 hrs. If the fuel tank requires replacement, both operations require approximately 3.5 hrs total. The dealer may need your vehicle for a longer period of time due to service scheduling issues, but every effort will be made to minimize your inconvenience.

If you experience any problem having your vehicle repaired promptly and/or at no charge, please inform us by calling the Mitsubishi Customer Relations Department at **888-648-7820**. Hours: Monday through Friday 7 a.m. to 4 p.m. (Pacific Time).

If, after contacting Mitsubishi Customer Relations, you still have a problem getting this repair made promptly and/or without charge, write to the Administrator, National Highway Traffic Safety Administration, 1200 New Jersey Avenue SE, Washington, D.C. 20590, or call the toll-free Vehicle Safety Hotline at 1-888-327-4236 (TTY: 1-800-424-9153), or go to <http://www.safercar.gov>.

If you have already encountered a problem with the right parking brake cable rubbing against the fuel tank and had them replaced as a result of this specific condition and have paid for the repair, you may send your original repair order or invoice, **and** original receipt/proof of payment to the following address for reimbursement consideration:

Mitsubishi Customer Relations Department, P.O. Box 6400, Cypress, CA 90630-0064

If you are the lessor of this vehicle, please forward a copy of this notice to the lessee within ten days to comply with federal regulations.

We appreciate your prompt attention to this matter.

Sincerely,

Mitsubishi Motors North America, Inc.

C1510W