



Recall Information Bulletin

No: C1008010 **Issued:** 10/5/2015

NHTSA No: 15V-504

Transport Canada No: 2015-357

Re: Brake Shim Rust

Group: 35 **Models:** FE

Updated: 11/30/2015

SUBJECT:

Safety Recall C1008010 – Brake Shim Rust

MODELS:

FEC52, FEC72, FEC92

VEHICLES INVOLVED:

Certain 2012 through 2016 model year FEC52, FEC72, and FEC92 trucks produced from February 3, 2011 through March 31, 2015.

A list of vehicles your Dealership has sold that require this Recall can be found on the Dealer's "Open Campaigns" list supplied by MFTA via Fusonet. Some individual vehicles described above may not need the Recall as the repairs may have already been performed. Always check the "VIN Inquiry" tab under "Service" or "Warranty" on Fusonet to verify that the VIN requires this Safety Recall.

Important note: It is a violation of Federal law for a dealer to deliver a new or used motor vehicle covered by this Recall Information Bulletin, under a sale or lease, until the Safety Recall has been completed.

OWNER NOTIFICATION:

Owners of affected vehicles will be notified by mail.

CONDITION:

Mitsubishi Fuso Truck of America, Inc. has decided that a defect which relates to motor vehicle safety exists in the brake pad shims on certain 2012 through 2016 FEC52, FEC72, and FEC92 vehicles. On certain affected vehicles, the brake pad shims are made of steel and may become corroded. Normal operation in this condition may cause an increase in the brake pedal stroke, reducing braking efficiency. In the worst case, the brakes could become inoperative, increasing the risk of a crash.

MODIFICATION:

The brake pad shims will be inspected on both axles. If the brakes are already equipped with stainless steel brake pad shims, no modification is necessary. If the vehicle is equipped with steel shims, they will be replaced with stainless steel shims on both sides of each affected axle.

PARTS LIST:

The replacement parts are available through normal parts channels.

Part Number	Description	Qty	Notes
LT142A	SHIM KIT	2	

PARTS PRICING ADJUSTMENT TABLE:

Part Number	Qty	Dealer Net	33% Mark Up	Recall Reimbursement
LT142A	1 or 2	\$11.00	\$14.63	US\$14.63 or US\$29.26

RECALL CLAIM SUBMITTAL:

Claim labor via Fusonet using the Recall Claim Entry screen. Enter all requested information, including the Campaign Number. The system will apply the labor allowance and parts pricing adjustment shown.

Campaign Reimbursement					
Campaign Number	Models	Allowances		Labor Description	Part Number
C1008010	FEC52 FEC72 FEC92	Labor Time	0.6 hour	Inspect brake pad shims	N/A
		Parts Pricing	\$0		
C1008020	FEC52 FEC72 FEC92	Labor Time	0.9 hour	Inspect brake pad shims (no rust/corrosion) and replace with stainless steel shims on one axle	LT142A (Qty – 1)
		Parts Pricing	US\$14.63		
C1008025	FEC52 FEC72 FEC92	Labor Time	1.3 hours	Inspect brake pad shims (with rust/corrosion) replace with stainless steel shims on one axle	LT142A (Qty – 1)
		Parts Pricing	US\$14.63		
C1008030	FEC52 FEC72 FEC92	Labor Time	1.3 hours	Inspect brake pad shims (no rust/corrosion) and replace with stainless steel shims on both axles	LT142A (Qty – 2)
		Parts Pricing	US\$29.26		
C1008035	FEC52 FEC72 FEC92	Labor Time	1.7 hours	Inspect brake pad shims (with rust/corrosion) and replace with stainless steel shims on both axles	LT142A (Qty – 2)
		Parts Pricing	US\$29.26		

NOTE:

If the brake pads are severely rusted (see image below) and require scraping and repainting prior to stainless steel brake shim installation, use the following for reimbursement of an additional 0.3 hr of labor on a Warranty Service Claim:

Warranty Claim Type – S
Failed Labor Operation – C1008090
Failed Part # - NPN
Labor Operation – C10080 Work Code – 90 Labor Time – 0.3 hour

IMPORTANT! A photo of the rusted brake pads must be emailed to warranty@mitfuso.com to ensure claim payment. Be sure to include your Dealer Code and Claim # or R/O # in the email.



NOTE: Brake shim rust does not affect brake life/wear. Brakes which are worn are a maintenance item and are the customer’s responsibility.

REPAIR PROCEDURE:

1. Park the vehicle on a flat, level surface, turn off the engine and chock the wheels.

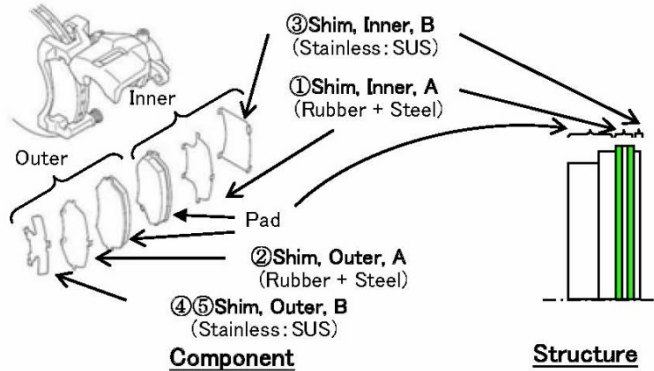
CAUTION!

Do not remove the wheel chocks until all modification work has been completed.

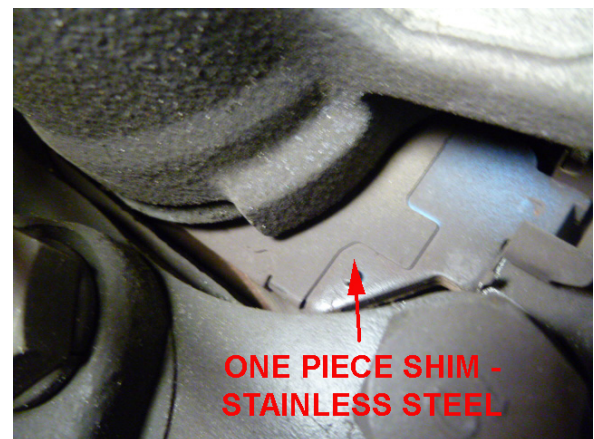
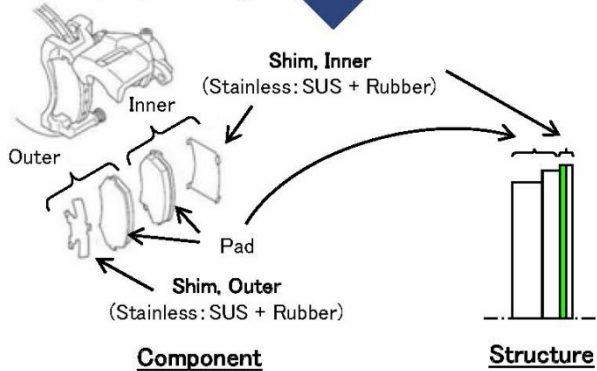
2. Inspect the brake shims on the front axle. If two-piece steel shims are installed, replace the shims on that axle with a stainless steel shim kit, using Group 35 of the appropriate Canter Service Manual. If one-piece stainless steel shims are installed, no repair is required.
3. Repeat the above inspection and/or replacement on the rear axle.

Use the illustrations and photos below to identify which shims are currently installed on the vehicle:

STEEL



STAINLESS STEEL



Torque Specifications

Caliper Bolts: 30 to 37 ft.lbs. (40 to 50 Nm)

Wheel Nuts: 324 to 396 ft.lbs. (441 to 539 Nm)

NOTE: Be sure to align the valve stems on the rear wheels during reassembly.