

EPICORD 30A POWER INLET REVIEW PROCEDURE

30-Jul-15

- STEP 1. Locate the 30A inlet on the side or rear of the RV in question to determine what brand of power inlet is installed. If the inlet is EPICORD brand and looks like this proceed to step 2.

If your inlet looks different than this your inlet is not subject to this recall and you may return the unit to service.



- STEP 2. If you believe that you may have an EPICORD brand 30A inlet; confirm by locating the 30A label on the outside cover and upper right hand corner inside the inlet.

Should Read: 30A 125V



- STEP 3. If you have completed steps 1 and 2 and determined that you do in fact have an EPICORD brand 30A inlet please proceed into the RV and locate the converter. Once the converter is located, turn the 30A main breaker to the OFF position.

- STEP 4. After turning the 30A main breaker to the OFF position, remove the four mounting screws as shown located on the face of the inlet and pull the inlet out of the RV wall. **SAVE THESE SCREWS AS THEY WILL BE NEEDED TO REINSTALL THE INLET.**



- STEP 5. After pulling the inlet out of the RV wall, inspect the device to determine how the unit was wired.

If the wires are coming out the back of the device and a grey push-in connector is used you may insert the inlet back into the wall of the RV and reinstall using the four screws removed in step 4. Please be sure to clear away any old caulking and reseal as per Forest River's standard operating procedure.



EPICORD 30A POWER INLET REVIEW PROCEDURE

30-Jul-15

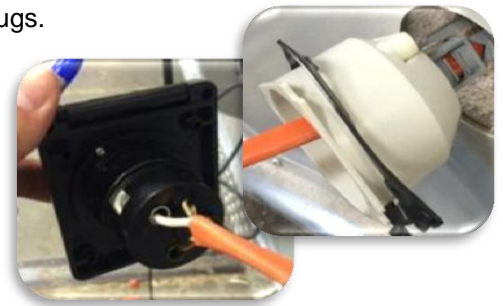
If the wires are installed through the strain relief on the bottom of the device, please proceed to correct the installation as follows:



A. Remove the two screws on the strain relief device located on the side of the unit using a screwdriver or power driver. Be careful to retain these screws as they will be needed to reinstall the strain relief device.



B. Pull the rear safety enclosure from the inlet exposing the lugs.



C. Loosen each of the lugs which are securing the three wires into the body of the device and pull the wires out of the device and through the strain relief located on the rear safety enclosure.



D. Reinstall the strain relief onto the side of the back body using the two screws removed in step A above. There will not be any wires entering the device through this opening any longer.



EPICORD 30A POWER INLET REVIEW PROCEDURE

30-Jul-15

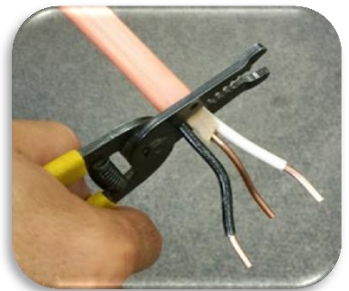
E. **IMPORTANT:** Inspect each connection for any signs of arcing on the cable or inlet.

a. If any signs of arcing are present, please contact Patrick Distribution at (574) 970-8282 to have a replacement inlet sent. Business hours are 7:00 AM to 5:00 PM EST, or you may e-mail your request to P125CS@patrickind.com and we will contact you ASAP to get the necessary information and schedule the replacement part shipment.

b. If no signs of arcing are present, please proceed to step F.



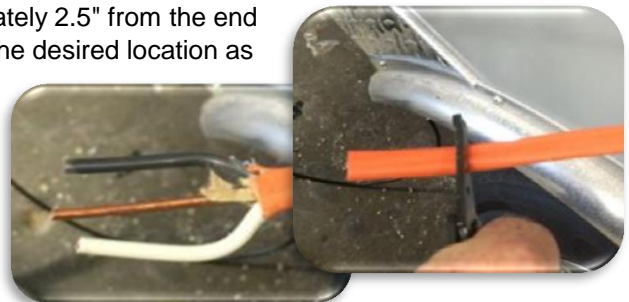
F. After determining that no signs of arcing are present cut off the portion of the wire that has previously been stripped allowing for a fresh start.



G. Install a 1/2" plastic push-in connector or similar plastic romex connector into the round hole in the back body of the inlet and thread the straight wires through the connector. **DO NOT TIGHTEN CONNECTOR ONTO THE WIRE YET.**



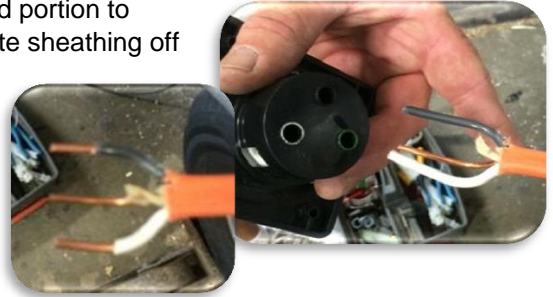
H. Strip the outer jacket from the romex approximately 2.5" from the end of the wire. This will allow you to bend the wires to the desired location as shown.



EPICORD 30A POWER INLET REVIEW PROCEDURE

30-Jul-15

- I. After the wires are bent to fit in the lugs cut the stripped portion to approximately 1.5 inches long, and strip the black and white sheathing off 3/4 of an inch.



- J. Insert each individual wire into its appropriate connection. Make sure the lugs are backed out completely before installing the wire. Ensure no sheathing goes under the lug.

- a. Black wire goes into the hole colored black.
- b. White wire goes into the hole colored white.
- c. Bare copper wire (ground) goes into the hole colored green.



- K. Torque each connection lug to the manufacture's recommended setting of 20 inch pounds using a torque wrench.
-

- L. Slide the rear safety enclosure of the device down the wire and align properly with the face of the device.



- M. Place the gasket at the rear of the device.



EPICORD 30A POWER INLET REVIEW PROCEDURE

30-Jul-15

N. Using channel locks secure the strain relief device which is installed in the back of the device body to the wire.



O. Re-insert the EPICORD 30A inlet back into the wall of the RV and secure using the four screws removed in step 3 above. Please be sure to clear away any old caulking and reseal as per Forest River's standard operating procedure.



P. Proceed inside the unit and turn the 30A main breaker located in the converter to the ON position. You have now completed the reinstallation of your 30A EPICORD inlet.