

July 28, 2015

02196 Version 2

Noncompliance Recall: HR-V Emission (Trim and Year), Tire, and A/C Labels

Supersedes 15-054, dated July 24, 2015; see REVISION SUMMARY

AFFECTED VEHICLES

Year	Model	Trim	VIN Range
2016	HR-V	ALL	Check the iN VIN status for eligibility

REVISION SUMMARY

The CUSTOMER NOTIFICATION section was added.

BACKGROUND

On a small number of HR-Vs, the vehicle's tire certification label on the driver's doorjamb and the A/C and emission certification labels under the hood may be missing or have incorrect information listed. This would cause the vehicle to be noncompliant with Title 49 of the Code of Federal Regulations, section 571.110, "Tire selection and Rims..." and various emissions regulations.

For reporting purposes, there are three noncompliance recalls for checking labels:

15-052, *Noncompliance Recall: HR-V Emission, Tire, and A/C Labels* – Check that all three labels are present, and also check **the vehicle trim** on the emission label.

15-053, *Noncompliance Recall: HR-V Emission Label* – Check that the emission label is present and check **the model year** on the emission label.

15-054, *Noncompliance Recall: HR-V Emission (Trim and Year), Tire, and A/C Labels* – Check that all three labels are present and also check **the vehicle trim and model year** on the emission label.

Do the applicable campaign as indicated in the iN VIN status inquiry.

CUSTOMER NOTIFICATION

Owners of affected vehicles will be sent a notification of this campaign.

Do an iN VIN status inquiry to make sure the vehicle is shown as eligible.

Some vehicles affected by this campaign may be in your used vehicle inventory. These vehicles must be repaired before they are sold.

Should your dealership sell an unrepaired vehicle that subsequently causes injury or damage because of the recalled item, the dealership will be solely responsible to the damaged party, and will be required to defend and indemnify American Honda for any resulting claims. To see if a vehicle in inventory is affected by this recall, do a VIN status inquiry before selling it.

CORRECTIVE ACTION

Inspect the emission, A/C, and tire label and, if necessary, replace any incorrect labels or apply any missing labels.

CUSTOMER INFORMATION: The information in this bulletin is intended for use only by skilled technicians who have the proper tools, equipment, and training to correctly and safely maintain your vehicle. These procedures should not be attempted by "do-it-yourselfers," and you should not assume this bulletin applies to your vehicle, or that your vehicle has the condition described. To determine whether this information applies, contact an authorized Honda automobile dealer.

PARTS INFORMATION

Part Name	Part Number	Quantity
Tire Label	42762-T7W-A00	1
Emission Label: 2WD (VIN begins with 3CZRU5) AWD (VIN begins with 3CZRU6)	17277-51M-A00 17277-51M-A10	1
A/C Label	80050-T7W-A01	1

NOTE:

- There are a small number of vehicles that will need an emission label. Order emissions labels only after finding a vehicle that needs one because the emission label is a controlled part, which requires you to have the VIN when ordering a new one.
- There are a small number of vehicles that will need an A/C or tire label. Both labels are available through the normal parts ordering system.

WARRANTY CLAIM INFORMATION

Operation Number	Description	Flat Rate Time	Defect Code	Symptom Code	Failed Part Number
4215B2	Inspect all three labels.	0.3 hr	5ZW00	JT400	42762-T7W-A00
A	Add to apply emission label.	0.1 hr	5ZW00	JT400	42762-T7W-A00
B	Add to apply A/C label.	0.1 hr	5ZW00	JT400	42762-T7W-A00
C	Add to apply tire label.	0.1 hr	5ZW00	JT400	42762-T7W-A00

Skill Level: Repair Technician

INSPECTION AND REPAIR PROCEDURE

Emission Label Inspection and Replacement

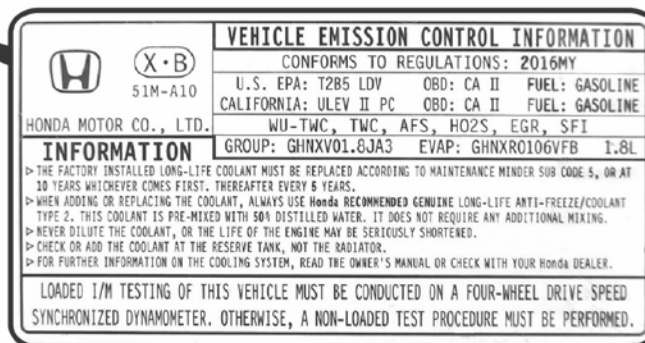
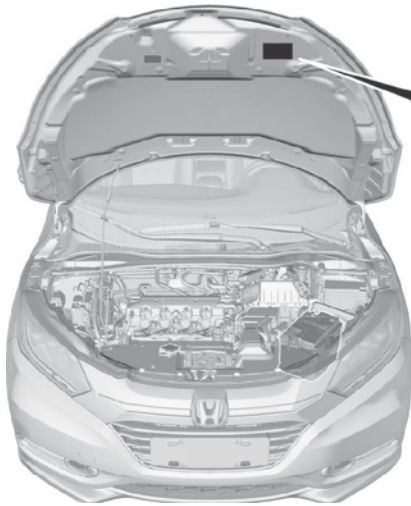
NOTE: The emission label is a controlled part. Make sure you have the VIN available when you are ordering a new one.

1. Open the hood and make sure the emission label is present at the location shown.

- If the label is present, go to step 2.
- If the label is missing, apply a new one:

NOTE: **There are 2 emission labels available.** Make sure you order the correct one for the vehicle.

- Using alcohol and a clean shop towel, clean the hood area where the emission label is placed. Allow the area to dry.
- Peel off the backing from the emission label, and apply it to the hood. Press the label firmly to make sure it sticks, then go to **A/C Label Inspection and Replacement.**

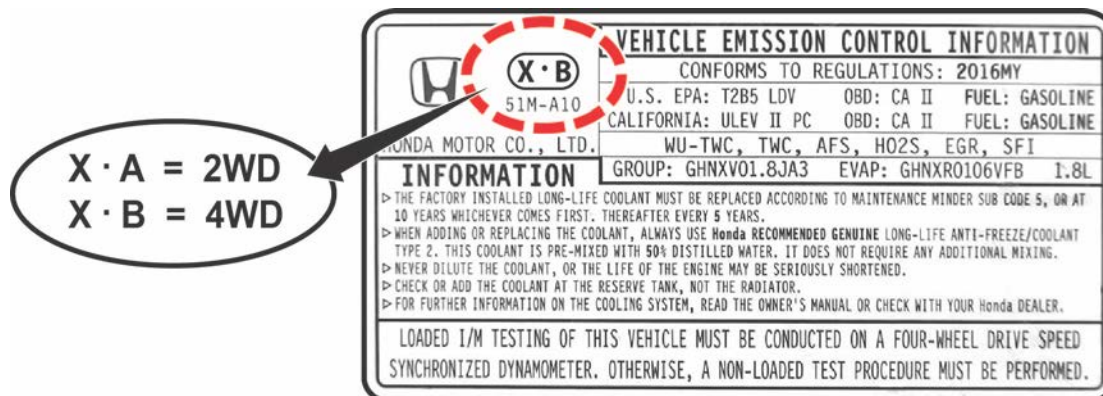


2. Inspect the emission label to make sure the correct vehicle trim is listed. **HR-Vs with 2WD (VIN begins with 3CZR05) should have X·A listed and HR-Vs with AWD (VIN begins with 3CZR06) should have X·B.**

- If the correct vehicle trim is listed, go to step 3.
- If the wrong vehicle trim is listed, replace the label.

NOTE: **There are 2 emissions labels available.** Make sure you order the correct one for the vehicle.

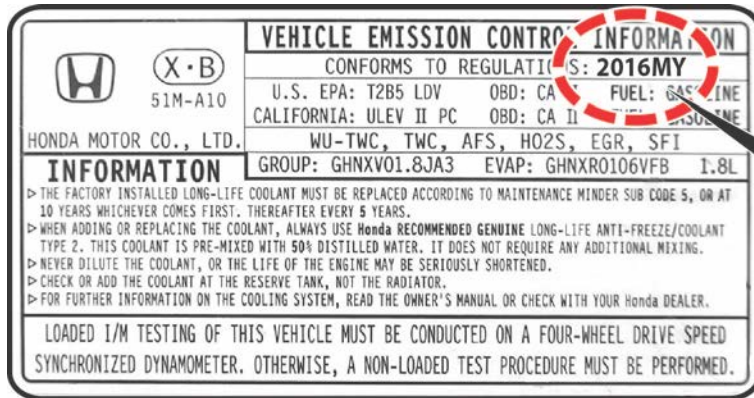
- Remove the original label and use 3M adhesive remover to clean any remaining adhesive residue.
- Using alcohol and a clean shop towel, clean the hood area where the emissions label is placed. Allow the surface to dry.
- Peel off the backing from the emissions label, and apply it to the hood. Press the label firmly to make sure it sticks, then go to **A/C Label Inspection and Replacement.**



3. Inspect the emission label to make sure **2016** is the model year listed as shown.
 - If the correct model year is listed, go to **A/C Label Inspection and Replacement**.
 - If the wrong model year is listed, replace the label.

NOTE: **There are 2 emissions labels available.** Make sure you order the correct one for the vehicle.

- Remove the original label and use 3M adhesive remover to clean any remaining adhesive residue.
- Using alcohol and a clean shop towel, clean the hood area where the emissions label is placed. Allow the surface to dry.
- Peel off the backing from the emissions label, and apply it to the hood. Press the label firmly to make sure it sticks, then go to **A/C Label Inspection and Replacement**.



A/C Label Inspection and Replacement

NOTE: **Each vehicle should only have 1 A/C label attached to the hood,** but because of a change during production, there are 2 different options.

1. Open the hood.
2. Make sure one of the two A/C labels shown below is present on the hood.
 - If the label is present, go to **Tire Label Inspection and Replacement**.
 - If the label is missing, apply a new label:
 - Using alcohol and a clean shop towel, clean the hood area where the A/C label is placed. Allow the surface to dry.
 - Peel off the backing from the A/C label, and apply it to the hood. Press the label firmly to make sure it sticks, then go to **Tire Label Inspection and Replacement**.

There are 2 different label options,
but each vehicle should only have one label attached.



OR



Tire Label Inspection and Replacement

1. Open the driver's door.
2. Make sure the tire label is present on the doorjamb.
 - If the label is present, all the labels are correct. Return the vehicle to the customer.
 - If the label is missing, apply a new label:
 - Using alcohol and a clean shop towel, clean the doorjamb area where the certification label is placed. Allow the surface to dry.
 - Peel off the backing from the tire label, and apply it to the driver's doorjamb. Press the label firmly to make sure it sticks. The labels are correct. Return the vehicle to the customer.



TIRE AND LOADING INFORMATION			
SEATING CAPACITY : TOTAL 5 : FRONT 2 : REAR 3			
The combined weight of occupants and cargo should never exceed 385kg or 850lbs.			
TIRE	SIZE	COLD TIRE PRESSURE	SEE OWNER'S MANUAL FOR ADDITIONAL INFORMATION
FRONT	215/55R17 94V	220KPA, 32PSI	
REAR		210KPA, 30PSI	
SPARE	T135/90D16 102M	420KPA, 60PSI	

WA

END