



## INSTRUCTIONS TO PERFORM CAMPAIGN 132

### Models Affected:

Certain 2014 and 2015 model year Metro Link Transit buses.

These vehicles were manufactured December 20, 2013 through April 9, 2015.

### Tools Required:

- Torque wrench
- 5/8" and 3/4" socket and wrench
- Permanent Marker

### Parts Required:

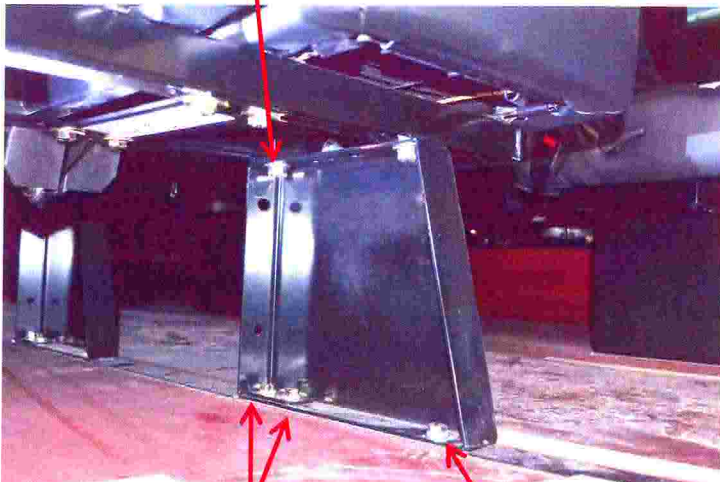
- Part Kits: One (1) kit will be used for each double wall mounted seat. Two (2) kits will be used for a single, middle position seat with two (2) leg bases.

**IMPORTANT: All replacement bolts and flat washers are grade 8. Do not use a lesser grade fastener as replacements!**

**Procedure:** To install a shim plate and flat washers to each seat pedestal.

**NOTE:** To avoid movement of the seat legs to floor, remove and replace one (1) bolt at a time before going to the next bolt.

Seat Leg to Seat Frame  
(rear location)

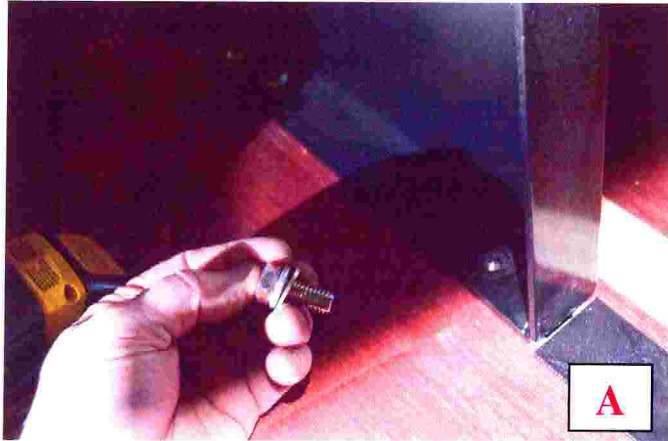


Rear seat  
leg to floor

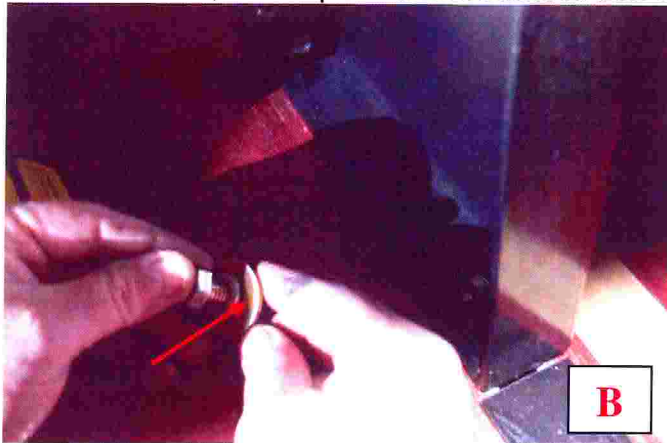
Front seat  
leg to floor

## **Seat Leg to Floor Procedure**

1. Remove current 7/16-20 x 1" bolt and washers from front seat leg to floor. *See figure A.*



2. Replace existing flat washer with new 7/16" grade 8 USS flat washer. Replace the existing lock washer with new one provided. Reinstall previously removed bolt and torque to 15 ft.-lbs. When finished, add a permanent mark to bolt and washer. *See figure B.*



3. Remove current 7/16-20 x 1" front bolt and washer from rear seat leg to floor. Discard bolt, flat washer, and lock washer. *See figure C.*



4. Install shim on top edge of leg base. Install new 7/16" grade 8 USS flat washer. Replace the existing lock washer with new. Install new 7/16-20 x 1 1/4 bolt. Do not over tighten; shim must swivel in Step 6. See figure D. **NOTE: New bolt is 1/4" longer.**



5. Remove current 7/16-20 x 1" rear bolt and washer from rear seat leg to floor. Discard bolt, flat washer, and lock washer. See figure E.



6. Loosen front bolt to allow the shim to swivel into position. . Install new 7/16" grade 8 USS flat washers. Replace the existing lock washer with new. Install new 7/16-20 x 1 1/4 bolt. See figure F. **NOTE: New bolt is 1/4" longer.**



7. Torque rear seat leg to floor bolts to 60 ft.-lbs. and add a permanent mark. See *figure G and H*.



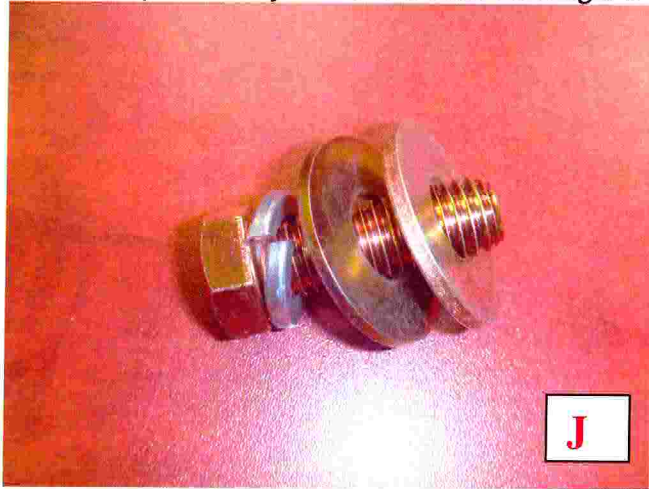
Repeat steps 1-7 for each seat leg to floor attachment.

### **Seat Leg to Seat Frame Procedure**

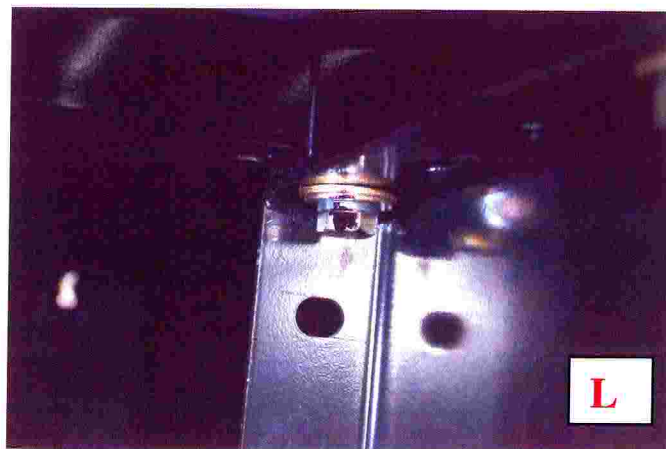
1. Remove current ½” bolt and washers from the seat leg to seat frame rear position. Discard lock washer and flat washer. See *figure I*.



2. Install two (2) new ½” grade 8 flat washers. Replace the existing lock washer with new. Reinstall previously removed bolt. *See figure J.*

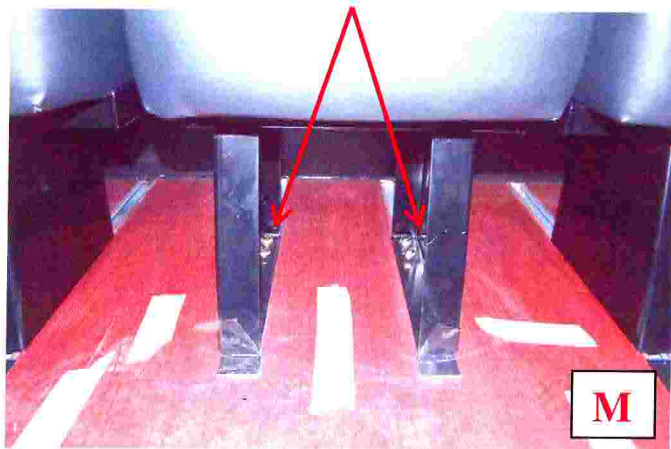


3. Torque bolt to 60 ft.-lbs. and add a permanent mark. *See figure K and L.*



**Repeat steps 1-3 for each seat leg to seat base attachment.**

**NOTE: If your bus is equipped with a rear middle seat it will have two (2) seat legs to floor. Repeat steps twice as it has two legs (a right and left). See figure M.**



**IMPORTANT: All replacement bolts and flat washers are grade 8. Do not use a lesser grade fastener as replacements!**