



SAFETY RECALL BULLETIN

SUBJECT:		No: SR-15-004	
ABS HYDRAULIC UNIT – SAFETY RECALL CAMPAIGN		DATE: July, 2015	
		MODEL: 2006–09 Eclipse and Eclipse Spyder	
CIRCULATE TO:	<input checked="" type="checkbox"/> GENERAL MANAGER	<input checked="" type="checkbox"/> PARTS MANAGER	<input checked="" type="checkbox"/> TECHNICIAN
<input checked="" type="checkbox"/> SERVICE ADVISOR	<input checked="" type="checkbox"/> SERVICE MANAGER	<input checked="" type="checkbox"/> WARRANTY PROCESSOR	<input checked="" type="checkbox"/> SALES MANAGER

PURPOSE

Over time, corrosion may form on the internal valves of the ABS hydraulic unit due to a reaction between the brake fluid and the surface treatment of the internal valves, potentially causing one or more of the valves to seize during ABS hydraulic unit activation. If one or more valves were to seize, the brake pedal stroke will increase and braking performance may be reduced.

This campaign bulletin instructs dealers to flush and clean the brake system with high quality brake fluid (DOT 4). The ABS hydraulic unit will then be tested for sufficient valve movement. If insufficient valve movement is experienced, the ABS hydraulic unit must be replaced. The dealer will also amend all available vehicle markings and documentation to indicate that DOT 4 brake fluid is required.

AFFECTED VEHICLES

Certain 2006 – 2009 Eclipse (4–cylinder only) vehicles built April 20, 2005 to February 13, 2009
 Certain 2007 – 2009 Eclipse Spyder (4–cylinder only) vehicles built December 23, 2005 to February 13, 2009

IMPORTANT

Affected new or used inventory vehicles must be repaired before the vehicle is delivered. Dealers must check their inventory vehicles' VINs on the Warranty Super Screen to verify whether the vehicle is involved in this recall campaign. It is a violation of Federal law for a dealer to deliver a new motor vehicle or any new or used item of motor vehicle equipment (including a tire) covered by the notification under a sale or lease until the defect or non-compliance is remedied.

CUSTOMER NOTIFICATION

A letter will be sent to all owners of affected vehicles telling them to contact their local Authorized Mitsubishi Motors dealer to have their brake system flushed with high quality brake fluid and the ABS hydraulic unit tested. A sample copy of the customer notification letter appears at the end of this bulletin.

REQUIRED OPERATIONS

Before starting this campaign procedure, **CHECK THE WARRANTY SUPERSCREEN** to verify if the vehicle is an affected VIN for this campaign and this campaign procedure has not already been completed.



Mitsubishi Motors Genuine Brake Fluid Super4 (DOT-4) Part Number MZ341022EX must be used to bleed the brake and ABS hydraulic unit systems.



To prevent damage to the vehicle's finish, do not spill brake fluid or touch any painted surfaces with gloves, shop rags, or tools covered in brake fluid.

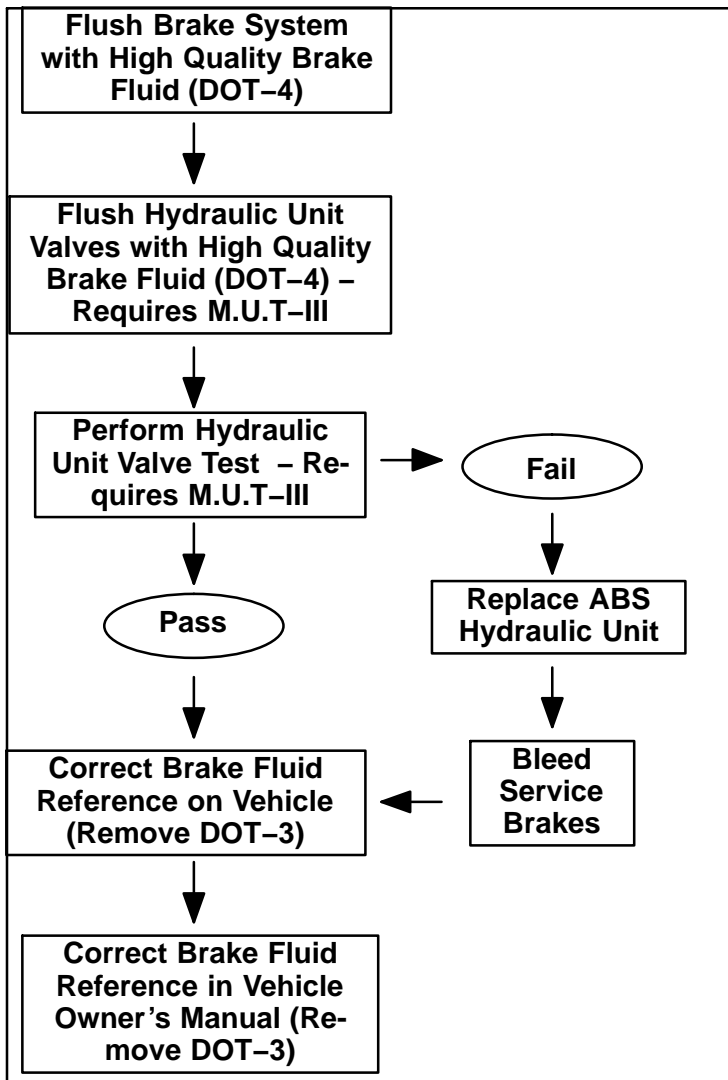
REQUIRED EQUIPMENT

The following equipment is needed to test the ABS hydraulic unit:

- VCI (Vehicle Communication Interface) or VCI Lite – MB991824 or MB992744V.
- MEDIC Laptop/Tablet with A/C power adapter – 520924, or FZG1MK2.
- MUT-III main harness 'A' (blue connector at the DLC end) – MB991910 or MB992745V.
- USB 2.0 cable – MB991827 or RRAR1MBR-108L.

FLOW CHART

Follow the flow chart below



SERVICE BRAKES FLUID FLUSHING

1. Park the vehicle over a lift and engage the parking brake.
2. Remove the brake reservoir cap and filter.



CAUTION Cover the surrounding area of the reservoir assembly with shop rags to protect from brake fluid spillage. If spillage occurs, clean the area immediately with

commercially available car wash shampoo, rinse with water, dry with shop rags and remove remaining residue with compressed air.

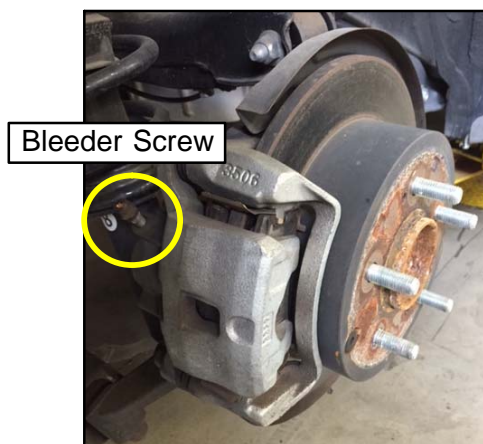
3. Withdraw as much brake fluid as possible using a suction tool.



4. Fill the reservoir to the MAX line with Mitsubishi Motors Genuine Brake Fluid Super4 (DOT-4). Reinstall brake reservoir filter and cap.
5. Lift the vehicle off the ground and remove all wheels.

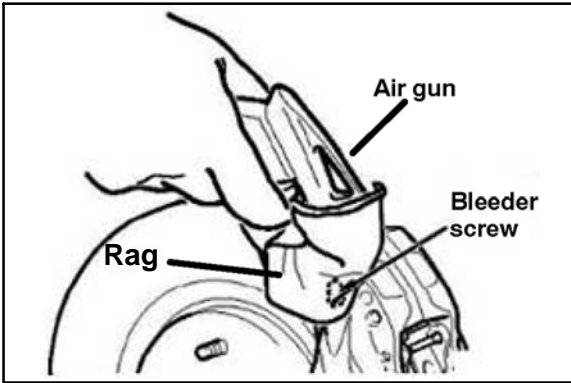
CAUTION When bleeding, always use a hose connected to the bleeder screw to direct brake fluid into a proper container.

CAUTION Cover the surrounding area of the bleeder screw with shop rags to protect from brake fluid spillage. If spillage occurs, clean the area immediately.



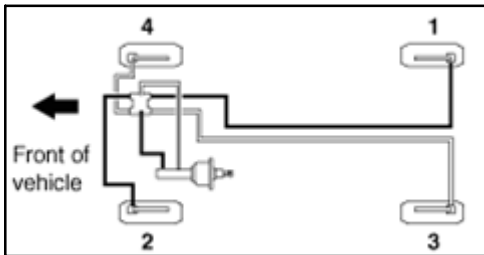
6. Bleed brake fluid from the right rear caliper bleeder screw until the brake fluid reservoir's level drops from MAX to MIN.

CAUTION Wear safety glasses and protective gloves when using air pressure to remove brake fluid from the bleeder screw.



7. Blow air into the top of the bleeder screw to remove any remaining brake fluid from the bleeder screw hole. Air pressure should be regulated to a low setting to minimize splatter. Securely tighten the brake bleeder screw.

8. Refill the brake fluid reservoir to the MAX line with Mitsubishi Motors Genuine Brake Fluid Super4 (DOT-4).
9. Perform Steps 6 – 8 on the remaining brake calipers in the order shown below.

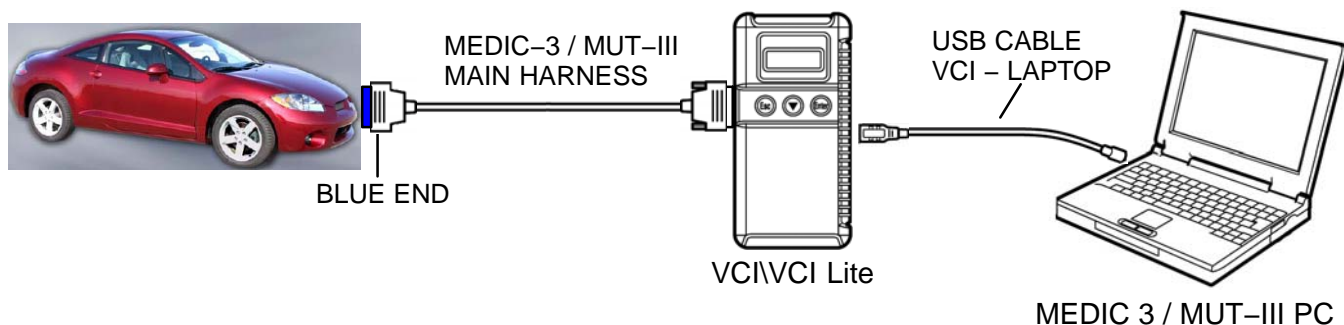


10. Check the brake pedal free play by depressing the brake pedal. Free play should be 0.1 – 0.3 inches (3 – 8 mm). If not within range, troubleshoot per the applicable service manual, Group 35A: Basic Brake System ---> On-vehicle Service ---> Brake Pedal Check and Adjustment ---> Brake Pedal Free Play.
11. Depress the brake pedal a few times. Ensure there are no fluids leaking in the brake and clutch (if equipped) system, including all hose and pipe connections.
12. Ensure the fluid level in the reservoir assembly is MAX. Secure the cap on the reservoir assembly.

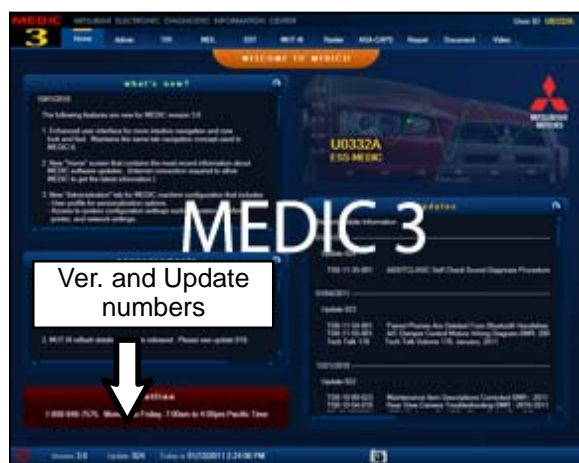
ABS HYDRAULIC UNIT VALVE FLUSHING

1. Connect the equipment as follows:
 - Turn the MEDIC PC/tablet on. If the battery indicator in the lower right hand corner of the screen does not show a full charge, it is recommended that either the battery be charged prior to beginning, or be used with the A/C power adaptor connected.
 - Connect the USB cable to the VCI/VCI Lite.
 - When the laptop/tablet displays the MUT-III main screen, connect the USB cable to the device.
 - Connect the MUT-III main harness with the blue DLC connection to the VCI/VCI Lite.
 - Connect the blue connection of the MUT-III main harness to the vehicle's data link connector.
 - Turn the VCI power switch ON . Verify that the indicator lamp in the upper right corner of the screen is green.

NOTE: VCI and MEDIC 3 Laptop shown for illustration purposes only



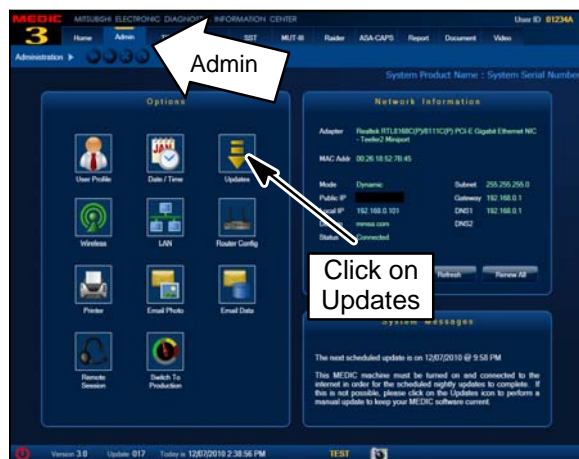
2. Start the engine and place the transmission to “N” Neutral position. Turn off all electrical systems (exterior/interior lights, blower motor, radio, etc...).



3. Verify the MEDIC 3/4 is at version 3.2 or higher and at update **340** or higher.

If your **MEDIC 3/4 update is at least 340**, proceed to Step 4.

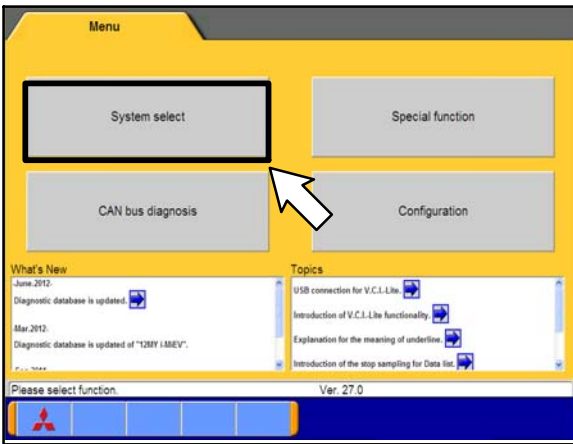
If your **MEDIC 3/4 update is below 340**, update your MEDIC as follows.



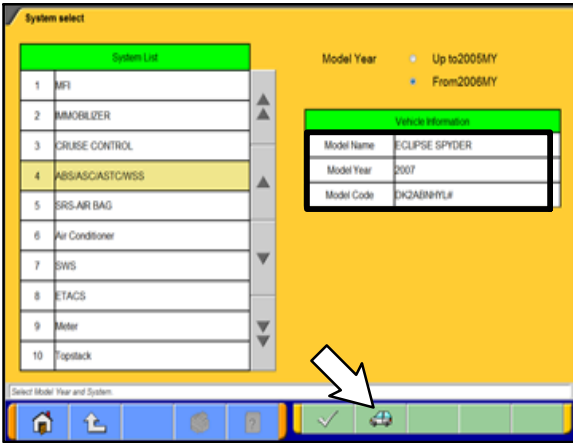
4. Select the MEDIC 3/4 Admin tab and click on “Updates.”



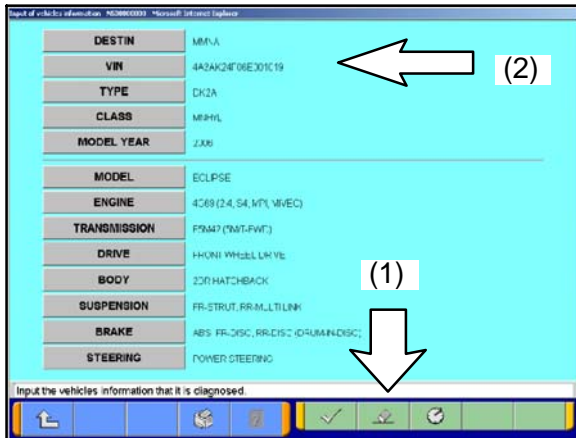
5. If the MEDIC update screen advises updates are available, click the “Begin” button.



6. From the MEDIC main page, click on MUT-III.
7. Select “System select.”

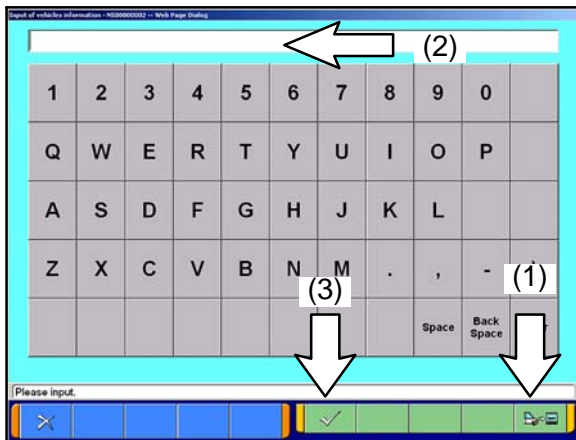


8. Ensure the vehicle information matches the vehicle being inspected. Select the “car” icon.



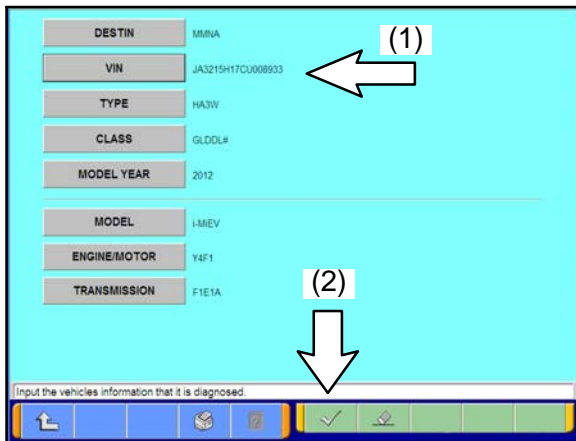
9. If the VIN listed does not match the vehicle being inspected, click on the eraser icon at the bottom of the page (1).

Click on the VIN button (2).



10. Click on the icon in the lower RH corner of the screen to have the MUT-III automatically read the VIN (1). If a message appears saying that the VIN cannot be read automatically, manually type the 17 digit VIN into the VIN field (2).

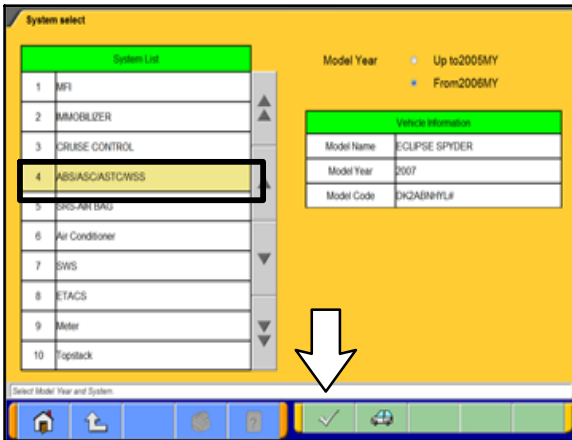
When the VIN is entered correctly, click on the check mark icon to continue (3).



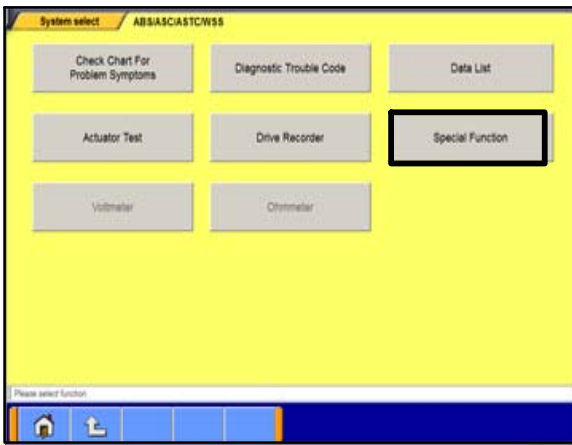
11. Ensure the VIN entered is correct (1).

When prompted, select the appropriate transmission.

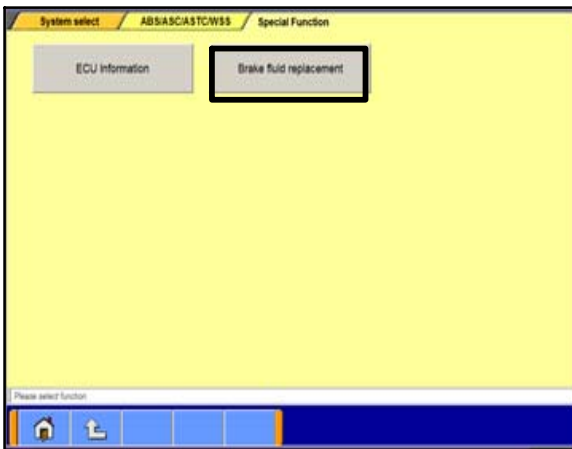
Click on the check mark icon to continue (2).



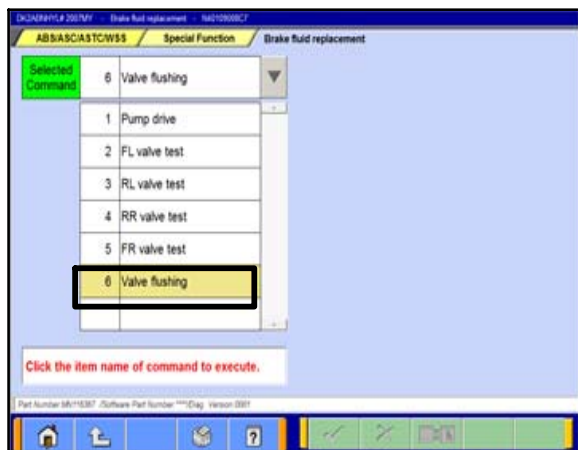
12. Select “4. ABS/ASC/ASTC/WSS” or “5. ABS/ASC/ASTC/WSS.” Once highlighted, click on the check mark icon to continue.



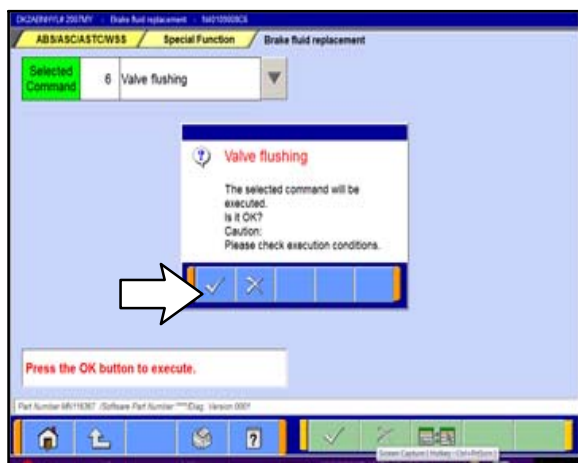
13. Select “Special Function.”



14. Select “Brake fluid replacement.”



15. Select command “6. Valve Flushing.”

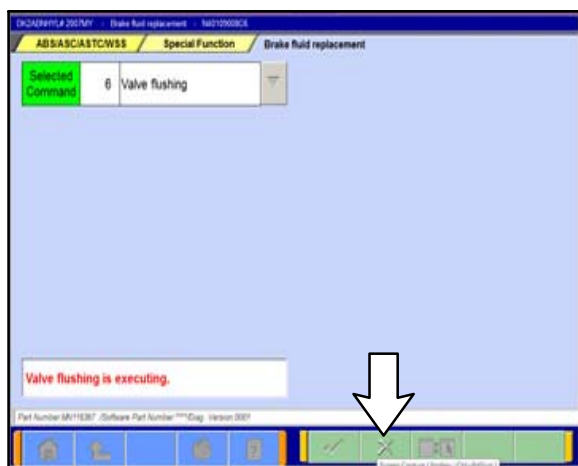


16. Press and hold the brake pedal firmly. **Press the check mark icon while depressing the brake pedal** to activate the valve flushing procedure.

The ABS warning lamp will flash during this step.



Do not allow the valve flushing procedure to exceed 30 seconds.

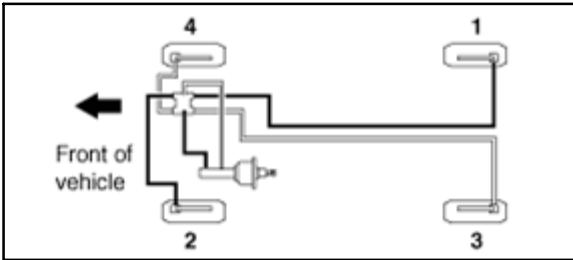


17. The hydraulic unit will operate and the brake pedal will pulsate. Continue to depress the brake pedal for 15 seconds, then select the “X” (stop) icon.

The ABS warning lamp continues to illuminate during this step.

CAUTION

While performing Steps 18–19, ensure the brake fluid reservoir level is between the MAX and MIN line. Refill as necessary.

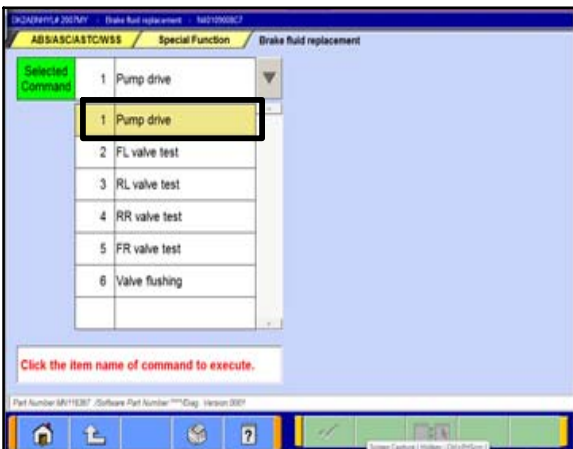


18. Depress and hold the brake pedal, and unscrew the the right rear caliper’s bleeder screw until the brake pedal goes to the floor and then tighten.
19. Following the brake bleeding sequence, repeat Step 18 on the remaining brake calipers (left front – left rear – right front).
20. Repeat Steps 15–19 **15 times** for a total of **15 valve flushing operations**.

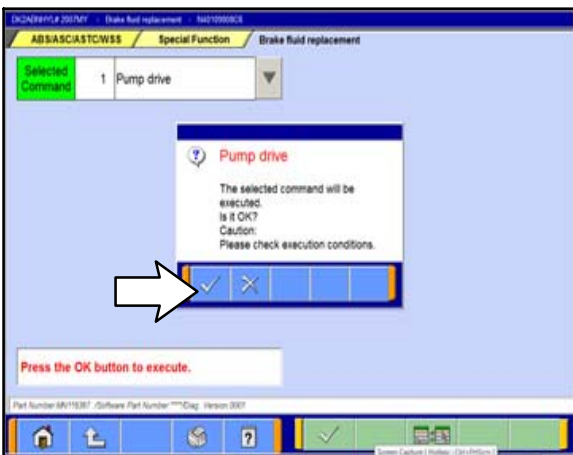
NOTE: Use the Process Check Sheet attached near the end of the bulletin to track your progress.

21. Remove and clean excess brake fluid from each brake caliper and bleeder screw.
22. Refill the brake fluid reservoir to the MAX line.

ABS HYDRAULIC UNIT VALVE TESTING



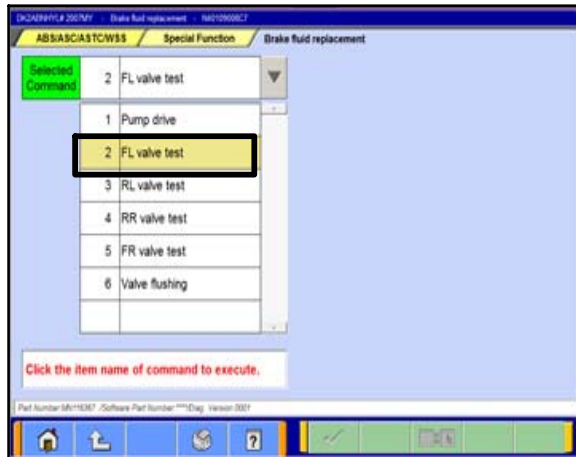
1. Select command “1. Pump drive.”



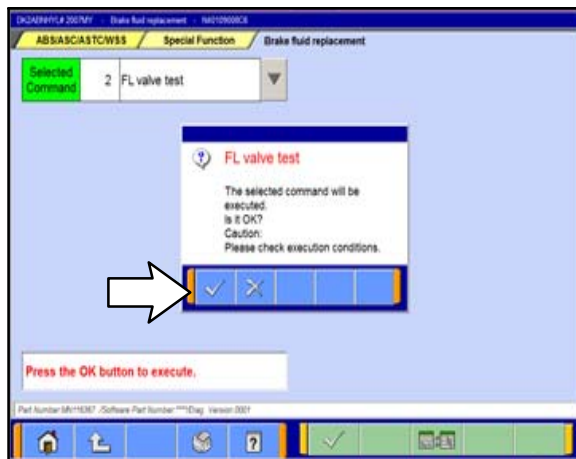
2. Press the check mark icon to continue.

The pump activation will automatically perform for a few seconds.

The ABS warning lamp will flash during this step.

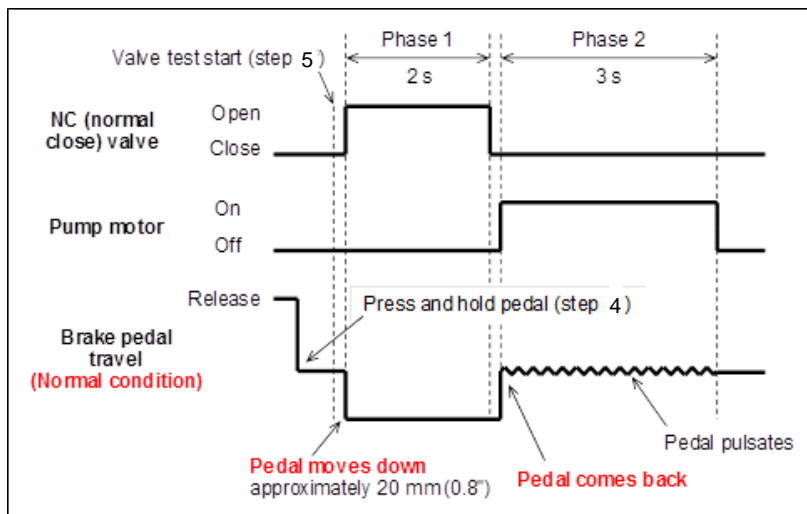


3. Select "2. FL valve test" (front left).
4. Press and hold the brake pedal firmly.



5. Press the check mark icon while depressing the brake pedal.

6. The valve test will begin. The brake pedal's behavior should follow the chart below.



Phase 1: NC (Normal Close) valve open

The valve will open right after the valve test starts.

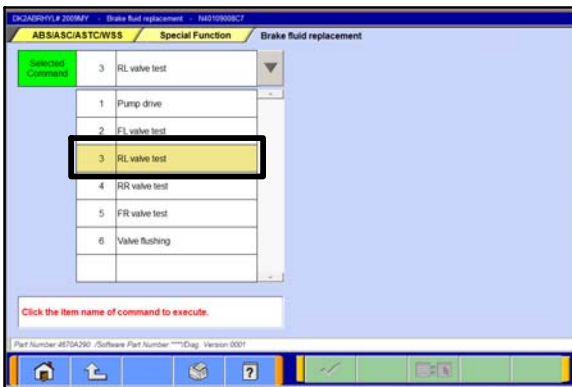
- If the brake pedal **moves down**, the hydraulic unit is **normal**.

- If the brake pedal **doesn't move down**, the hydraulic unit is **not normal**.

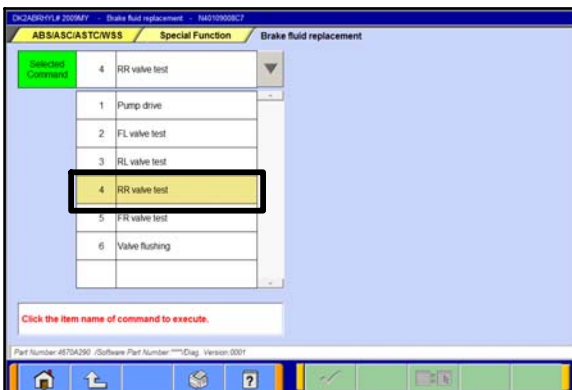
Phase 2: Pump motor on

The pump motor will run approximately 2 seconds after the valve test has started.

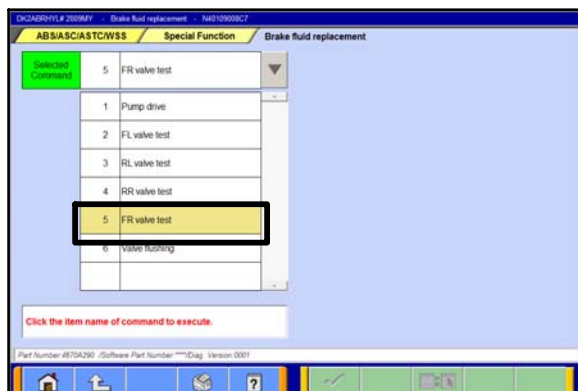
- If the brake pedal **comes back up**, the hydraulic unit is **normal**.
 - If the brake pedal **doesn't come back up**, they hydraulic unit is **not normal**.
- a. If Phase 1 or Phase 2 brake pedal behavior is **not normal**, ABS hydraulic unit replacement is required. Refer to the applicable service manual, Group 35B: ABS --> Hydraulic Unit --> Removal and Installation. Once the ABS Hydraulic Unit is replaced, proceed directly to the **Brake Fluid References** section.
 - b. If Phase 1 and Phase 2 brake pedal behavior is **normal**, proceed to the next step. Record your findings in the Process Check Sheet located near the end of the bulletin to track your progress.
7. Prior to selecting the next valve to test, the command "1. Pump drive" must be activated again. Repeat Steps 1-2.



8. Select "3. RL valve test" (rear left).
9. Press and hold the brake pedal firmly.
10. Repeat Steps 4-6.



11. Repeat Steps 1-2.
12. Select "4. RR valve test" (rear right).
13. Press and hold the brake pedal firmly.
14. Repeat Steps 4-6.



15. Repeat Steps 1–2.
16. Select “4. FR valve test” (front right).
17. Press and hold the brake pedal firmly.
18. Repeat Steps 4–6.

19. If all four valve tests reveal that the brake pedal behavior is normal, ABS hydraulic unit testing is complete. The ABS hydraulic unit **does not** need to be replaced. Proceed to the next section.

BRAKE FLUID REFERENCES

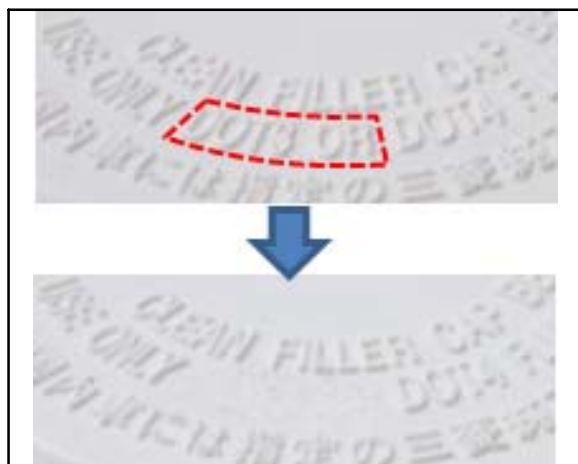
NOTE: This section must be performed on all affected vehicles.



CAUTION To prevent damage to the brake fluid reservoir cap during scraping, do not scrape with too much force.



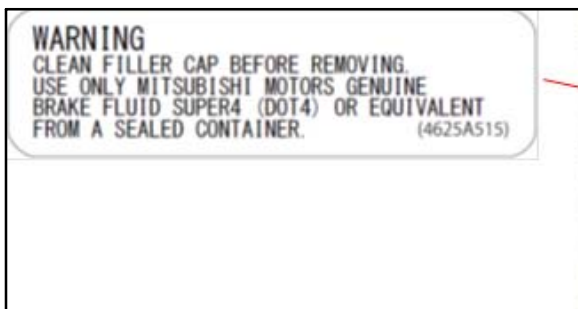
CAUTION Ensure the scraped residue does not adhere to the brake fluid reservoir cap.



1. Reinstall all four wheels and lower the vehicle. Torque specification for the wheel nuts is 73 ± 7 ft-lb (98 ± 10 N-m).
2. Remove the brake fluid cap from the reservoir.
3. With a carving knife or similar tool, scrape off the wording of “DOT 3 OR” from the brake fluid warning description which is embossed on the top surface of the cap.
4. Remove scraped residue from the top and bottom side of the reservoir cap.
5. Reinstall the cap to the brake fluid reservoir.

FOR VEHICLES IN THE US AND PR

6. If the vehicle is equipped with a front strut tower brace, adhere the English brake fluid warning label on the strut tower brace as shown.

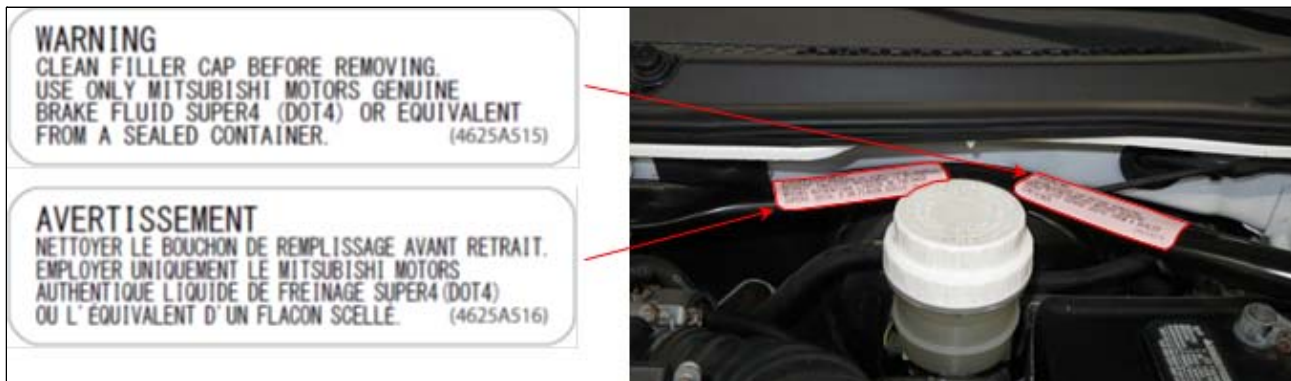


7. If the vehicle is not equipped with a front strut tower brace, adhere the English brake fluid warning label on the dash panel as shown.



FOR VEHICLES IN CANADA

8. If the vehicle is equipped with a front strut tower brace, adhere the English and French brake fluid warning label on the strut tower brace as shown.



9. If the vehicle is not equipped with a front strut tower brace, adhere the English and French brake fluid warning label on the dash panel as shown.



FOR VEHICLES IN US, PR, AND CANADA

10. Follow the chart and sample below to install the Owner's Manual correction labels.

NOTE: If the Owner's Manual is not available, provide the labels to the customer and advise that they may install the labels themselves or return to an Authorized Mitsubishi Motors dealership to have the labels installed.

Model Year		Correction Label From Kit	Place Correction Labels In The Indicated Chapters
English Owner's Manual (US, PR, CAN)	06	4625A532	<ul style="list-style-type: none"> Ch. 7 – Vehicle Care and Maintenance, Section: Brake Fluid / Clutch Fluid, Recommended fluid Ch. 9 – Specifications, Section: Capacities, Brake
	07		
	08		
	09	4625A533	<ul style="list-style-type: none"> Ch. 7 – Vehicle Care and Maintenance, Section: Brake Fluid / Clutch Fluid, Fluid type Ch. 9 – Specifications, Section: Capacities, Brake
French Owner's Manual (CAN)	06	4625A534	<ul style="list-style-type: none"> Ch. 7 – Vehicle Care and Maintenance, Section: Brake Fluid / Clutch Fluid, Recommended fluid Ch. 9 – Specifications, Section: Capacities, Brake
	07		
	08		
		09	4625A535

SAMPLE:

- Chapter 7

Fluid type

Use Genuine Mitsubishi Brake Fluid "SUPER4 (DOT4)" or equivalent. The reservoir cap must be tightly sealed to keep dirt and water out

Fluid type

Use the brake fluid conforming to DOT 3 or DOT 4. The reservoir cap must be tightly sealed to keep dirt and water out.

CAUTION

Do not let any petroleum-based fluid touch, mix with, or get into the brake fluid. This will damage the seals.

Genuine Mitsubishi Brake Fluid SUPER4 (DOT4) or equivalent

- Chapter 9

Brake	As required	Conforming to Brake fluid DOT3 or DOT4
-------	-------------	--

PROCESS CHECK SHEET

Date of Repair _____
 Model Year _____
 Model Name Eclipse / Eclipse Spyder
 VIN _____

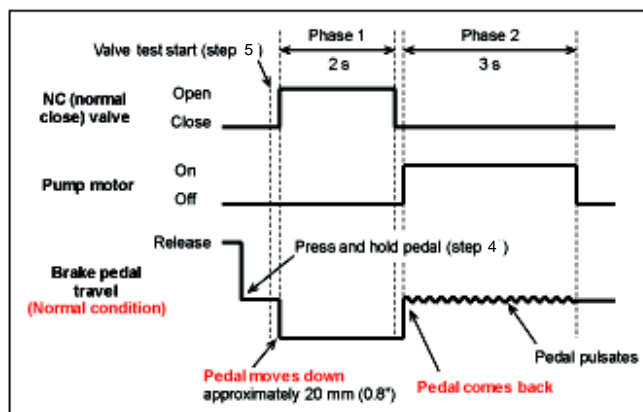
Hydraulic Unit Valve Flushing

Fill check mark after conducting each process.

#	1	2	3	4	5	6	7	8	9	10	11	12	13	14	15
Flushing															
Bleeding 4 calipers															

Hydraulic Unit Valve Test

	Pump Drive	Valve Test				Remarks
		Phase 1		Phase 2		
	Done?	Did the brake pedal move down?		Did the brake pedal come back?		
Front Left (FL)		Yes	No	Yes	No	If any of behaviors are not normal, cancel the valve test procedure, replace the hydraulic unit.
Rear Left (RL)		Yes	No	Yes	No	
Rear Right (RR)		Yes	No	Yes	No	
Front Right (FR)		Yes	No	Yes	No	
		Normal	Abnormal	Normal	Abnormal	Valve Condition



Dealer Certification:

I hereby certify that each hydraulic unit valve flushing and the hydraulic unit valve test was completed as described in Safety Recall Bulletin SR-15-004.

Service Manager Signature _____

Date _____

Technician Signature _____

Date _____

PARTS INFORMATION

Use the genuine Mitsubishi Parts listed below:

Description	Part Number	Remarks	Qty / Vehicle
Mitsubishi Motors Genuine Brake Fluid Super4 (DOT-4)	MZ341022EX	Supplied in 1.0L Bottle	Approximately 1.3L
Label Kit (2006 – 2008 MY) (See note)	4625A532	For US, PR, and Canada (English)	3 Labels per Vehicle: (1) Engine Compartment Label (1) Owner's Manual Correction Label (chapter 7) (1) Owner's Manual Correction Label (chapter 9)
Label Kit (2009 MY) (See note)	4625A533		
Label Kit (2006 – 2008 MY) (See note)	4625A534	For Canada (French)	
Label Kit (2009 MY) (See note)	4625A535		
ABS Hydraulic Unit	4670A746	If replacement is necessary	1 unit

NOTE: Each Label Kit will service 20 vehicles, and includes 2 sheets of labels in the following categories:

- 20 engine compartment labels
- 20 Owner's Manual correction labels (chapter 7)
- 20 Owner's Manual correction labels (chapter 9)

WARRANTY INFORMATION

There are 2 possible repair scenarios. Review the scenario selection chart to choose the correct operation scenario. You may only claim 1 scenario.

#	Campaign Number: C1504M	Campaign Operation #
1	Check Drain, Flush, Clean, Refill, Inspect ABS Unit = OK	C1504M01
2	Check Drain, Flush, Clean, Refill, Inspect ABS Unit = NG – Replace ABS Unit	C1504M02

Replaced Parts Retention

Retain all replaced parts for the normal MMNA replaced parts retention period. Hold all replaced parts for at least 30 days after the paid claim's end of month statement date.

WARRANTY / RECALL CAMPAIGN CLAIM INFORMATION

Enter all claims as claim type 'C' – Recall/Campaign Claims

Please follow the campaign instructions when entering each claim in order to select the operation code that correctly matches up with the work that was actually performed. A claim example is provided below.

Certain 2006–2009MY Eclipse and 2007–2009 Eclipse Spyder

Claim Header Section: ABS Hydraulic Unit – flush and clean, refill, inspect, replace if needed.

After entering the required customer data, vehicle information and applicable campaign labor operation number on the “Repair Performed” scenario that is selected from the menu, hitting the “Save and Continue” button will automatically fill-in several fields. Please note that there are 2 possible repair scenarios available.

CAMPAIGN INFORMATION		Repair Performed
Campaign Operation No	C1504M	C1804M01 = Drain, Flush, Clean, Refill and Inspect ABS = OK
Miles / KM	85,000	C1804M02 = Drain, Flush, Clean, Refill and Inspect ABS = NO - Replace ABS Unit
VIN	4A3AK24F36E001027	Repair Order No
Repair Date In	7 / 30 / 2015	EX12345
Repair Date Out	7 / 31 / 2015	

Campaign Claim Example:

Follow these instructions to claim for performing the ABS Hydraulic Unit – Drain, Flush, Clean, Refill, Inspect ABS Unit = OK – or – ABS Hydraulic Unit – Drain, Flush, Clean, Refill, Inspect ABS unit = NG and Replace the ABS Hydraulic Unit.

PARTS:

Only certain part numbers from the lists on pages 15 and 17 are allowed to be claimed. The required replacement labels and the quantities to use per vehicle will depend on the location (country) and model and model year of the vehicle. Note: The need for replacement of the ABS Hydraulic Unit after a complete and proper flush, cleaning and refill will be minimal.

NOTE: DOT 4 Brake Fluid (MZ341022EX) will be reimbursed at an amount = to 1.3L of fluid based on the 1.0L per bottle dealer net price.

NOTE: Each Label will be reimbursed at a rate 1/20 the cost of the label kit. Enter the quantity number for each label used. 1 engine compartment label and 2 Owner's Manual correction labels per vehicle.

LABOR:

Follow the chart below to select the appropriate campaign labor operation and labor time that matches the repair that was actually performed. These operations will appear on the dropdown.

Campaign Number: C1504M				
Campaign Operations - Select from Claim Drop Down Menu			Labor Times by Model	
Select the repair actually performed and the corresponding operation scenarios and times shown below. Check the repair order to be sure you are selecting the correct repair.				
	Repair Descriptions	Operation Scenarios	Eclipse	Eclipse Spyder
#1	Check Drain, Flush, Clean, Refill, Inspect ABS unit = OK	C1504M01	1.9	1.9
#2	Check Drain, Flush, Clean, Refill, Inspect ABS unit = NG Replace ABS Unit	C1504M02	3.7	3.7

OTHER CHARGES:

In rare cases, towing and/or a rental car may be necessary. The lower portion of the labor page has the fields that must be filled in if there are such charges.

Select	Labor Operation	Labor Operation Description			Amount
<input type="checkbox"/>	SHO	SPECIAL HANDLING ORDER	SHO Parts Order	<input type="text"/>	<input type="text"/>
<input type="checkbox"/>	RENTACAR	RENTAL CAR CHARGES	Days	Reason <Select one>	<input type="text"/>
			Rental Company	Invoice Number	<input type="text"/>
<input type="checkbox"/>	95300040	FREIGHT CHARGES	Freight Company	Invoice Number	<input type="text"/>
<input type="checkbox"/>	95200040	TOWING CHARGES	Towing Company	Invoice Number	<input type="text"/>



IMPORTANT SAFETY RECALL

Mitsubishi Motors North America, Inc.

6400 Katella Avenue
Cypress, CA 90630
Telephone: 714-372-6000
www.mitsubishicars.com

This notice applies to your vehicle, _____.

Date: July, 2015

Dear Mitsubishi Owner,

This notice has been sent to you in accordance with the National Traffic and Motor Vehicle Safety Act.

Reason for notice: Mitsubishi Motors North America, Inc. (MMNA) has decided that a defect which relates to motor vehicle safety exists in certain 2006 – 2009 Eclipse and 2007 – 2009 Eclipse Spyder vehicles. The Anti-lock Braking System (ABS) hydraulic unit installed on your vehicle is susceptible to failure from internal corrosion that may occur over time.

If the ABS hydraulic unit has sufficient internal corrosion and is activated during braking events where the ABS is designed to engage, the ABS hydraulic unit's internal valves could seize. If one or more valves were to seize, the brake pedal stroke will increase and braking performance may be reduced, increasing the risk of crash without warning.

If the ABS is not activated, and even if the ABS hydraulic unit has sufficient internal corrosion, **the service brakes on your vehicle will continue to perform as designed.**

What you should do: Please contact your local Authorized Mitsubishi Motors dealer and schedule an appointment to have the repair performed on your vehicle, free of charge. When you bring your vehicle in, please show the dealer this letter. If you misplace this letter, the dealer will still make this repair to your vehicle.

What your dealer will do: The dealership will flush and clean the brake system with high quality brake fluid (DOT 4). The ABS hydraulic unit will then be tested for sufficient valve movement. If insufficient valve movement is experienced, the ABS hydraulic unit will be replaced, free of charge. The dealership will also amend all available vehicle markings and documentation to indicate that DOT 4 brake fluid is required.

How long will it take? The time needed for the brake system flush and ABS hydraulic unit test is approximately **2.0** hrs. If the test determines that the ABS hydraulic unit requires replacement, the repair time is approximately **4.0** hrs. The dealer may need your vehicle for a longer period of time due to service scheduling issues, but every effort will be made to minimize your inconvenience.

If you experience any problem having your vehicle repaired promptly and/or at no charge, please inform us by calling the Mitsubishi Customer Relations Department at **888-648-7820**. Hours: Monday through Friday 7 a.m. to 4 p.m. (Pacific Time).

If, after contacting Mitsubishi Customer Relations, you still have a problem getting this repair made promptly and/or without charge, write to the Administrator, National Highway Traffic Safety Administration, 1200 New Jersey Avenue SE, Washington, D.C. 20590, or call the toll-free Vehicle Safety Hotline at 1-888-327-4236 (TTY: 1-800-424-9153), or go to <http://www.safercar.gov>.

If you have already encountered a problem with the ABS hydraulic unit and had it replaced as a result of this specific condition and have paid for the repair, you may send your original repair order or invoice, **and** original receipt/proof of payment to the following address for reimbursement consideration:

Mitsubishi Customer Relations Department, P.O. Box 6400, Cypress, CA 90630-0064

If you are the lessor of this vehicle, please forward a copy of this notice to the lessee within ten days to comply with federal regulations.

We appreciate your prompt attention to this matter.

Sincerely,
Mitsubishi Motors North America, Inc.

C1504M