

BRT Rear Cap Taillight Inspection Criteria

1. Follow all vehicle Lock-Out and Shutdown Procedures and Safety Requirements before inspection.
2. Document the bus serial number on page 5. This is located on the VIN plate inside the bus, above the drivers' side window.
3. Open the rear engine access door. Refer to Figure 1.



Figure 1: BRT Rear Engine Door Opened

4. With a flashlight, inspect both the roadside and curbside taillight mount bracket locations. Refer to Figure 2 for taillight bracket inspection flow chart.
5. Use pictorial examples of suspect and non-suspect taillight bracket installations from Figure 3 and Figure 4.
6. Document findings onto spreadsheet.
7. Forward completed inspection information to:
GILLIG Field Service, VY.VU@gillig.com with the subject of the email formatted "Taillight Campaign – Customer Name".

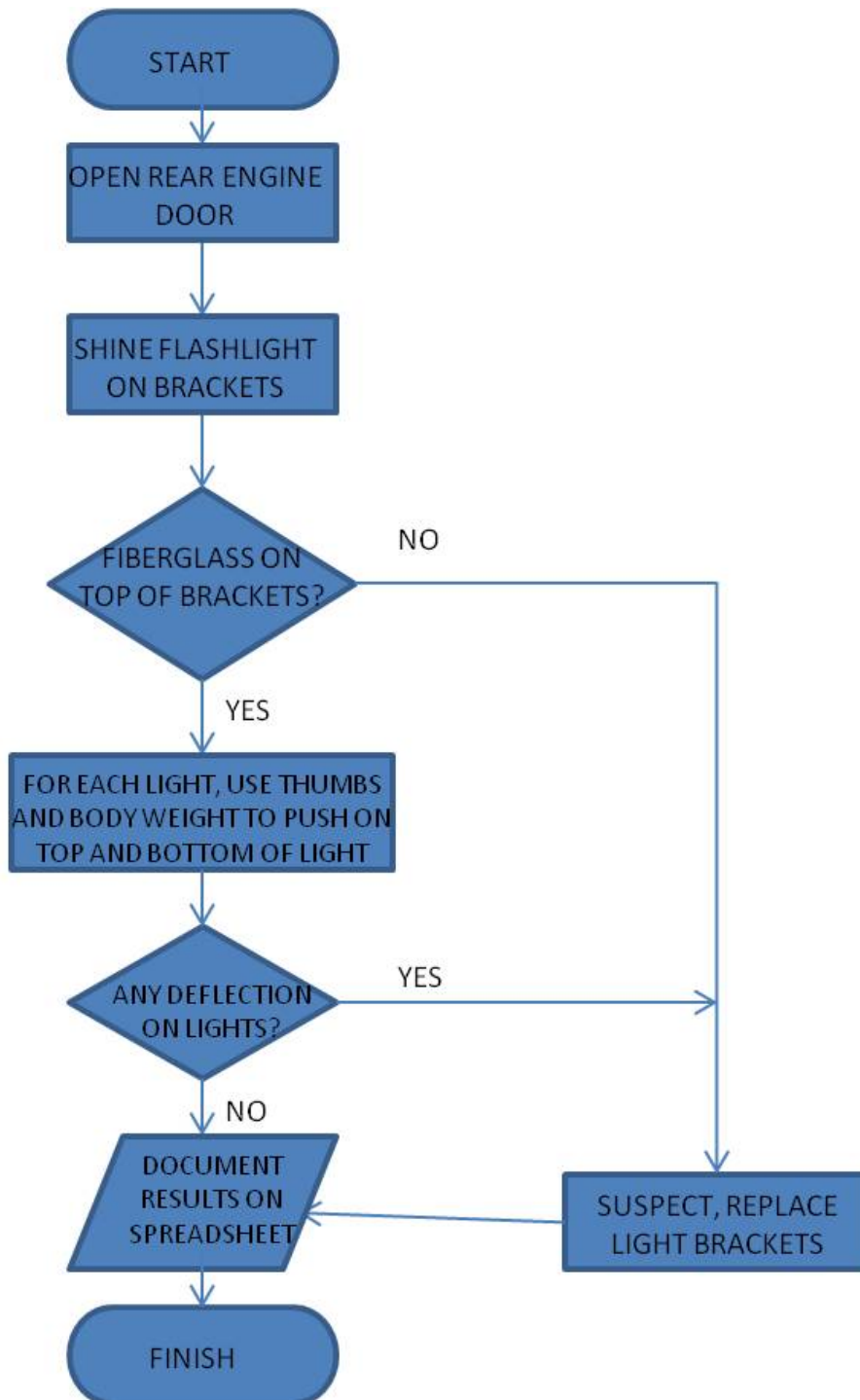


Figure 2: Bracket Inspection Flow Chart

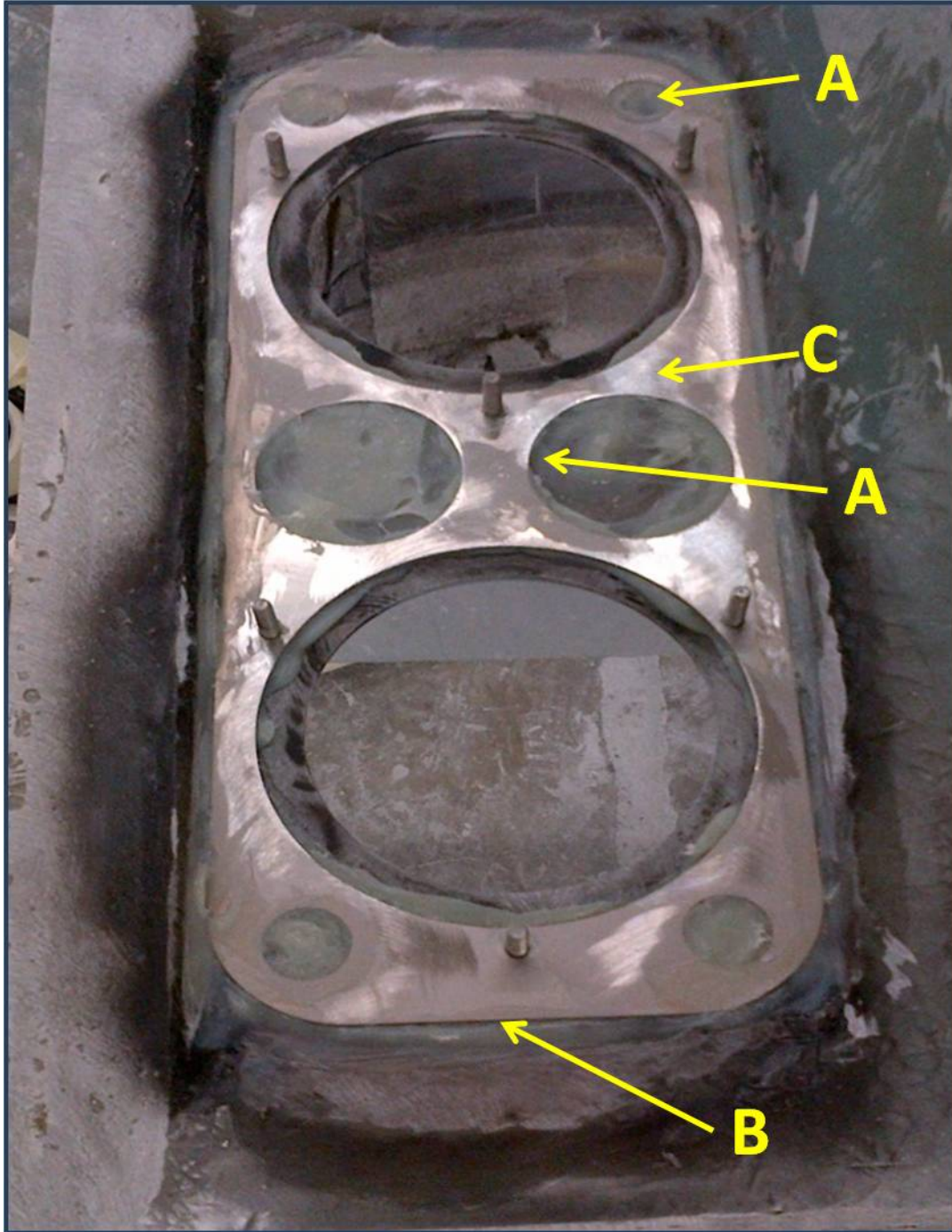


Figure 3: Suspect Taillight Bracket

- Corner and center (A) squeeze-out points are ground smooth
- No encapsulation of resin around perimeter (B) of taillight bracket.
- Bracket visually looks to be loose or on verge of coming loose.
- Excessive grinding marks down to the metal plate (C).

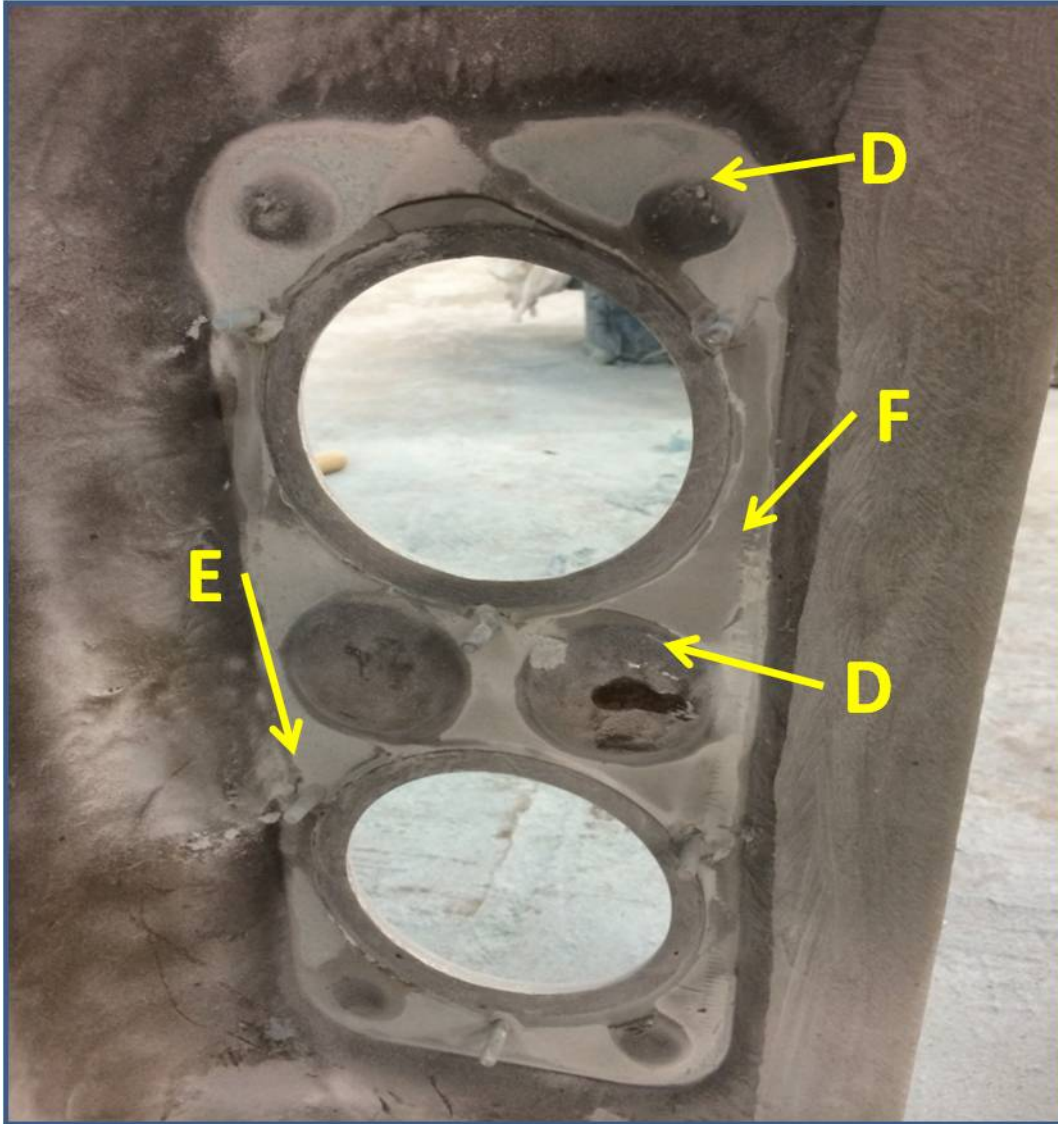


Figure 4: Non-Suspect Taillight Bracket

- Four corners and two center squeeze-out points (D) are NOT ground smooth.
- Visible overlap (E) of resin around perimeter of taillight bracket.
- Bracket is SNUG and secured in place.
- If any signs of grinding are present, none that have been grinding down to metal plate (F)

BRT Taillight Inspection report						
	Customer Name	Bus Serial Number	Bracket Failed*		Failure Criteria	Inspection Date
			RS	CS		
1.)						
2.)						
3.)						
4.)						
5.)						
6.)						
7.)						
8.)						
9.)						
10.)						
11.)						
12.)						
13.)						
14.)						
15.)						
16.)						
17.)						
18.)						
19.)						
20.)						
21.)						
22.)						
23.)						
24.)						
25.)						
Notes:						
*Document which side bracket has failed, but BOTH brackets are to be replaced.						