

# IMPORTANT UPDATE

## TECHNICAL INSTRUCTIONS

### FOR

## SAFETY RECALL DSC and ELG

(Note: These technical instructions may be used on any vehicle covered under DSC or ELG)

## FRONT PASSENGER AIRBAG INFLATOR MODULE

### CERTAIN 2002 – 2010 MODEL YEAR SC 430

**Updated 03-10-2021**

**Update 03-10-21**

- The part section has been updated for 2002-2006 MY.

**Update 01-14-21**

- The scanning application process has been updated

**Update 04-18-2018**

- The parts section has been updated

**Update 05-22-2017**

- Part number updated for the 2007-2010 MY.

**Update 03-23-2017**

- Part number updated for the 2002-2006 MY.

**Update 03-01-2016**

- Updated to include the 2008-2010 MY.

**Update 12-18-2015**

- Updated inflator harness routing.

**Update 9-30-2015**

- 2007 MY part numbers added.

**Update 5-12-2015**

- ELG has been expanded to include 2006 and 2007 MY SC 430 vehicles.
- The airbag/inflator scanning application screen shots have been updated.

**Update 2-24-15**

- DISCONTINUED: Passenger airbag disablement has been discontinued.

All dealership associates involved in the recall process are required to successfully complete E-Learning course LSC13A. To ensure that all vehicles have the repair performed correctly; technicians performing this recall repair are required to have successfully completed E-Learning course LSC13B, in addition to LSC13A, and currently hold at least one of the following certifications levels:

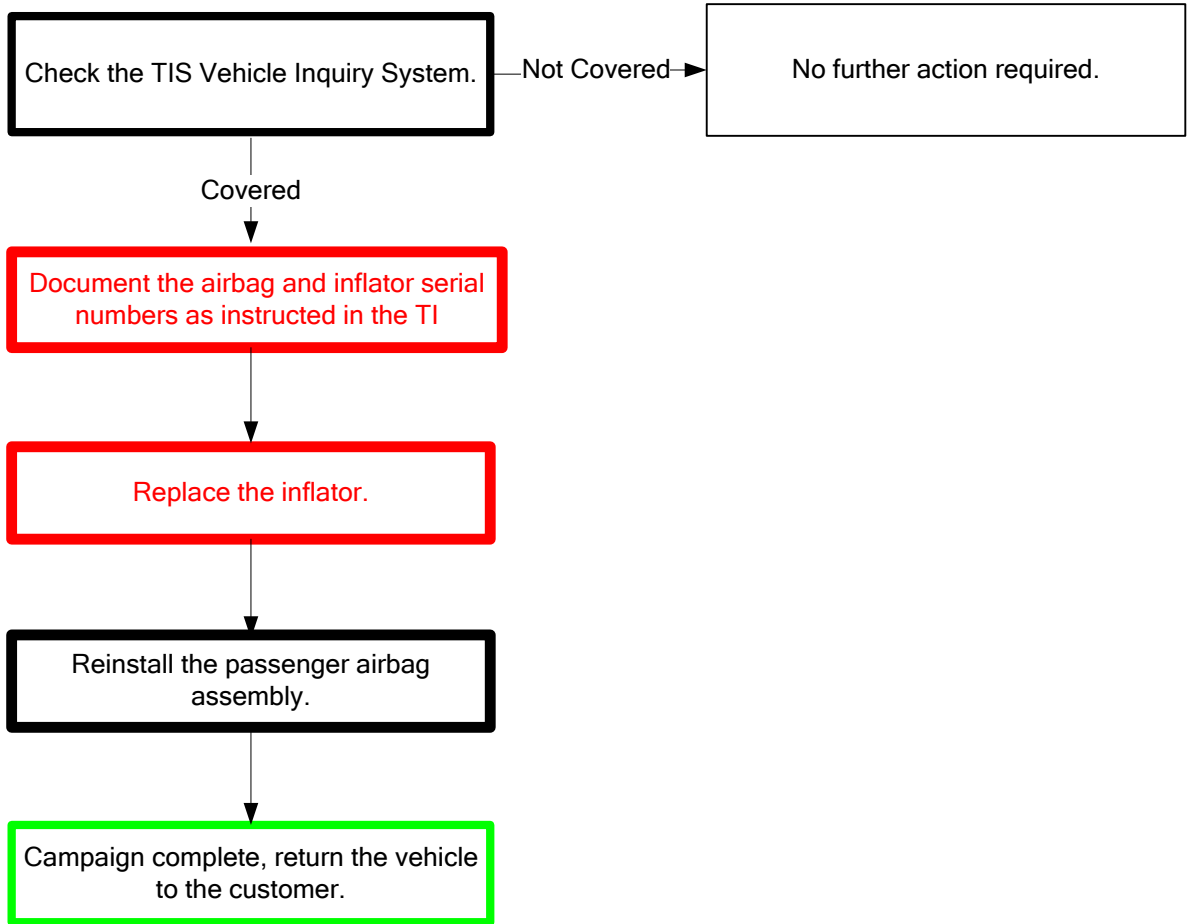
- MASTER SERVICE TECHNICIANS
- MASTER DIAGNOSTIC SPECIALISTS

**NOTE:** To support additional service capacity, Lexus Certified and Senior Service Technicians, with at least 36 months Lexus experience AND L652 course credit, may also perform this repair following successful completion of course LSC13B.

**NOTE:** The videos in this document were created for DSC, but are used in this document to help supplement the technical instructions.

# I. OPERATION FLOW CHART

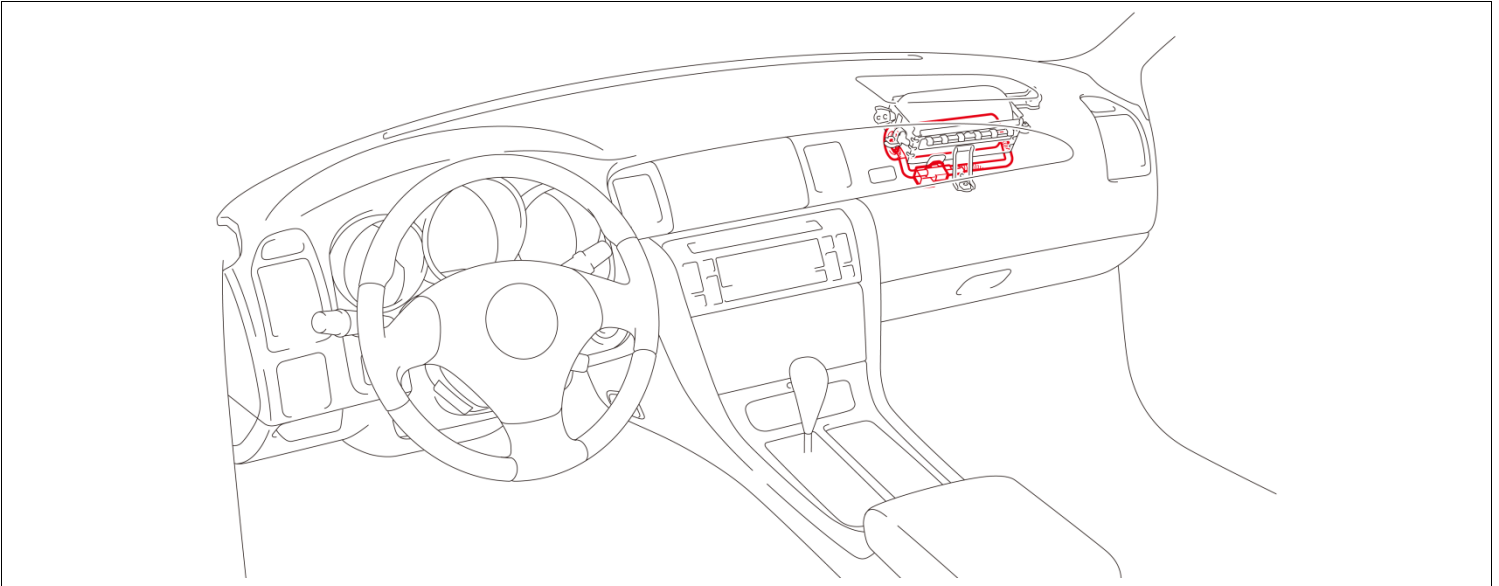
The flow chart is for reference only. **DO NOT** use it in place of the full technical instructions. Follow **ALL** steps as outlined in the full technical instructions to confirm the campaign is completed correctly.



**STOP** Passenger airbag disablement has been DISCONTINUED you must repair the vehicle. **STOP**

## II. BACKGROUND

The subject vehicles are equipped with front passenger airbag assemblies. When located in areas with consistently high absolute humidity, the front passenger airbag inflator could be susceptible to rupture in a crash. An inflator rupture may result in metal fragments striking and potentially seriously injuring the vehicle occupants. The cause of the potential ruptured inflators and influence of high absolute humidity are under investigation.



## III. IDENTIFICATION OF AFFECTED VEHICLES

### A. COVERED VIN RANGE

- Check the TIS Vehicle Inquiry System to confirm the VIN is involved in this Safety Recall, and that the campaign has not already been completed prior to dealer shipment or by another dealer.
- **TMS warranty will not reimburse dealers for repairs conducted on vehicles that are not affected or were completed by another dealer.**

## IV. PREPARATION

### A. PARTS

**Only one inflator is required per vehicle, ensure that the correct part number is used so that the correct return shipping information is provided in the kit.**

**Applicable for: The 48 States in Continental U.S., Alaska, Hawaii and USTT Locations**

| Part Number  | Part Description                      | Quantity |
|--|---------------------------------------|----------|
| 04006-05324*<br>or<br>04008-03124*<br>2002-2006 MY | Instrument Panel Airbag Inflator Kit* | 1        |

\*The kit above includes the following parts.

|                            |   |
|----------------------------|---|
| Inflator                   | 1 |
| Position Determining Plate | 1 |
| Self Locking Nut           | 4 |
| Electro Tap                | 1 |

**\*Continue to order 04006-05324 until there is no longer stock at your facing PDC. Once there is no longer stock of the inflator kit part number 04006-05324 the inflator kit part number 04008-03124 will be substituted to perform the remedy for 2002-2006 SC430 vehicles.**

| Part Number                   | Part Description                      | Quantity |
|-------------------------------|---------------------------------------|----------|
| 04006-05424<br>2007 - 2010 MY | Instrument Panel Airbag Inflator Kit* | 1        |

\*The kit above includes the following parts.

|                            |   |
|----------------------------|---|
| Inflator                   | 1 |
| Position Determining Plate | 1 |
| Self Locking Nut           | 4 |
| Electro Tap                | 1 |

### Non-Desiccated Part Recovery

**Dealers should discontinue the installation of the non-desiccated parts listed below for recall, customer pay repairs AND over-the-counter sales (if applicable).**

| Model  | Model Year | Part Number                | Part Description                |
|--------|------------|----------------------------|---------------------------------|
| SC 430 | 2002-2010  | 73960-24010<br>73960-24030 | AIR BAG ASSY,<br>INSTR PNL PASS |

**Toyota requires all dealers to return any parts listed above that still remain in dealer inventory by utilizing the Hazmat Part Return Program available. Dealers will be issued a refund for all part returns. This part return program is outlined in *PANT Bulletin 2014-042*.**

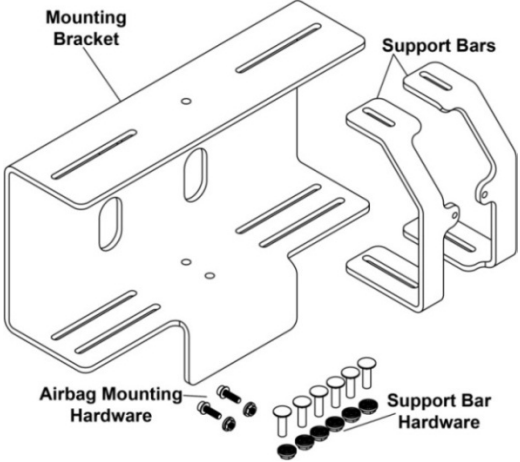
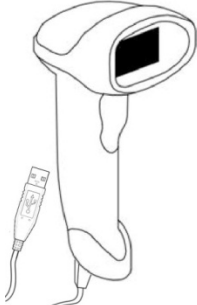
#### Important Note:

In order to return the inflator, packages must **NOT** be opened/tampered with.

**B. TOOLS & EQUIPMENT**

- Standard hand tools
- Molding remover set
- Torque wrench
- Techstream
- Electrical Tape
- Zip Tie

**ELG CAMPAIGN TOOLS** – These tools were previously provided to the dealership for campaign DLC and will be used for campaign ELG. These tools are required when performing this repair.

| Image  | Name  | Quantity |
|--|---|----------|
|   | <p>Airbag Mounting Bracket &amp; hardware</p> | <p>1</p> |
|  | <p>Barcode Scanner</p>                        | <p>1</p> |

**NOTE:** These tools **CANNOT** be ordered through the parts or tools system. There is a very limited supply of tools, but if additional tools are needed, contact your area representative.

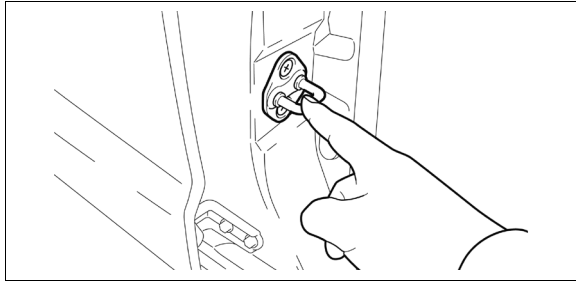
## V. SAFETY PRECAUTIONS



### CRITICAL INFORMATION – READ THOROUGHLY

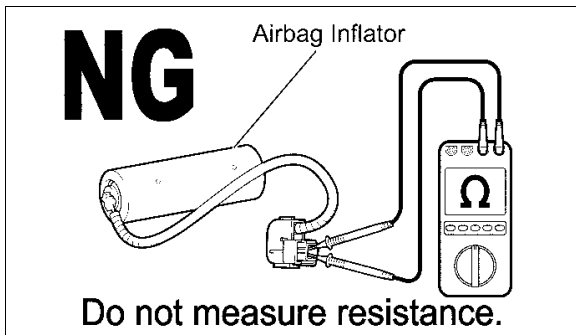


Failure to follow these procedures correctly could cause the SRS to unexpectedly deploy during servicing or the SRS may fail to operate correctly when required after reassembly. Confirm all work is performed as described in these instructions.



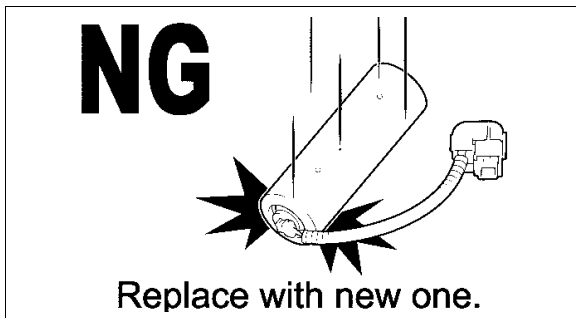
#### 1. ELIMINATE STATIC ELECTRICITY

- a) Before starting work and periodically while working on the vehicle, touch a metallic part of the vehicle to discharge static electricity in the body.



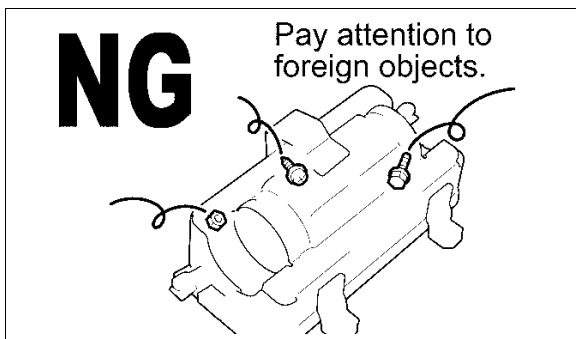
#### 2. DO NOT MEASURE RESISTANCE

- a) **DO NOT** measure resistance of airbag components, this may cause accidental activation.



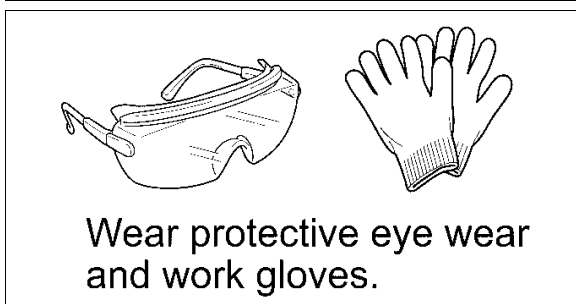
#### 3. HANDLE THE AIRBAG CAREFULLY

- a) If an inflator is dropped, replace it with a **NEW** inflator.



#### 4. DO NOT ALLOW FOREIGN OBJECTS NEAR AIRBAG

- a) Be sure to collect and account for all removed nuts/bolts to prevent them from landing in the airbag assembly.
- b) Any foreign objects in the airbag assembly may cause damage or injury if the airbag is activated.



#### 5. WEAR PROTECTIVE EQUIPMENT

- a) Always wear appropriate protective equipment when working on the SRS.



## VII. WORK AREA PREPARATION

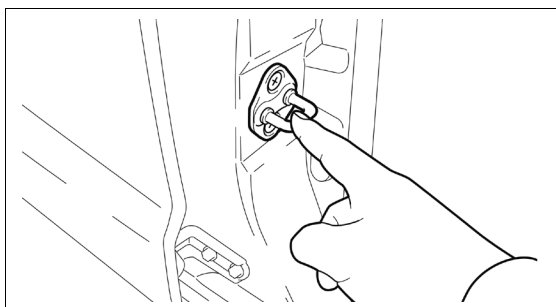
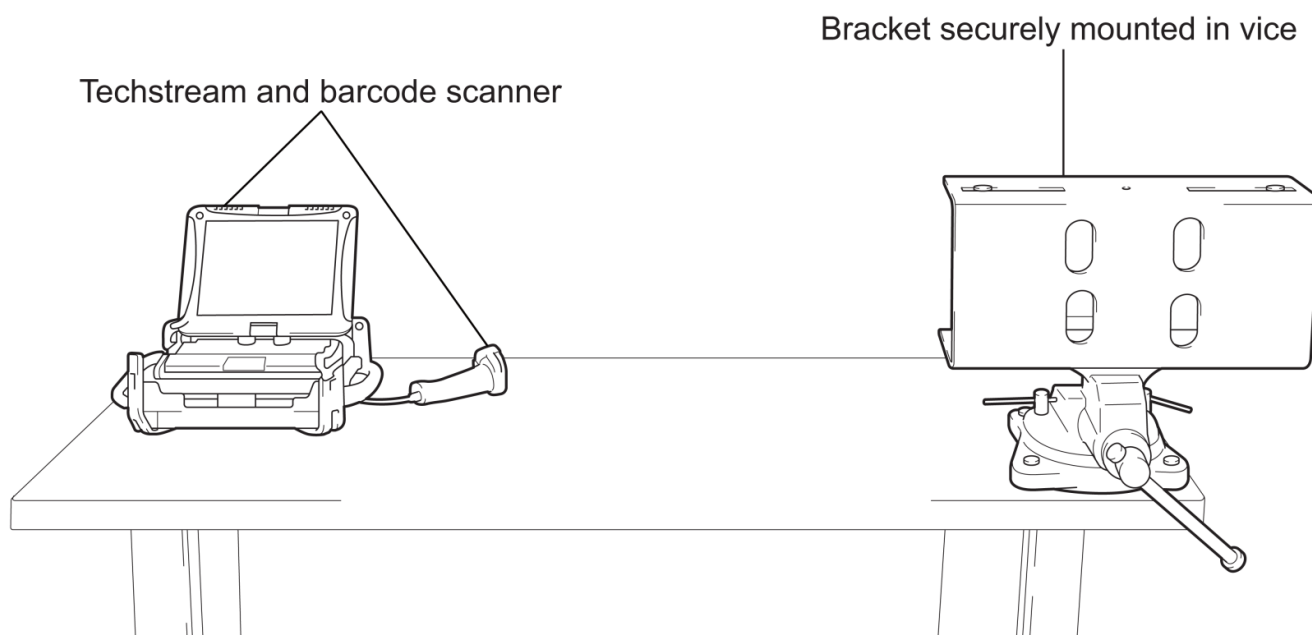
STOP

### CRITICAL INFORMATION – READ THOROUGHLY

STOP

The bracket assembly that was provided at the launch of SSC DLC is a critical added-safety feature that ***MUST*** be used when replacing the inflator module. Confirm the bracket assembly is installed securely in the vise and confirm the work area being used is appropriate. Before starting work and periodically while working on the vehicle, touch a metallic part of the vehicle to discharge static electricity in the body.

Confirm there are no loose objects or people exposed to the back side of the bracket for safety in the unlikely event of airbag deployment due to improper work procedures (Remember that the inflator ***IS NOT*** being replaced due to an inadvertent deployment concern).



Before starting work and periodically while working on the vehicle, touch a metallic part of the vehicle to discharge static electricity in the body.

# VIII. FRONT PASSENGER AIRBAG ASSEMBLY REMOVAL

## 1. DISCONNECT THE NEGATIVE BATTERY TERMINAL

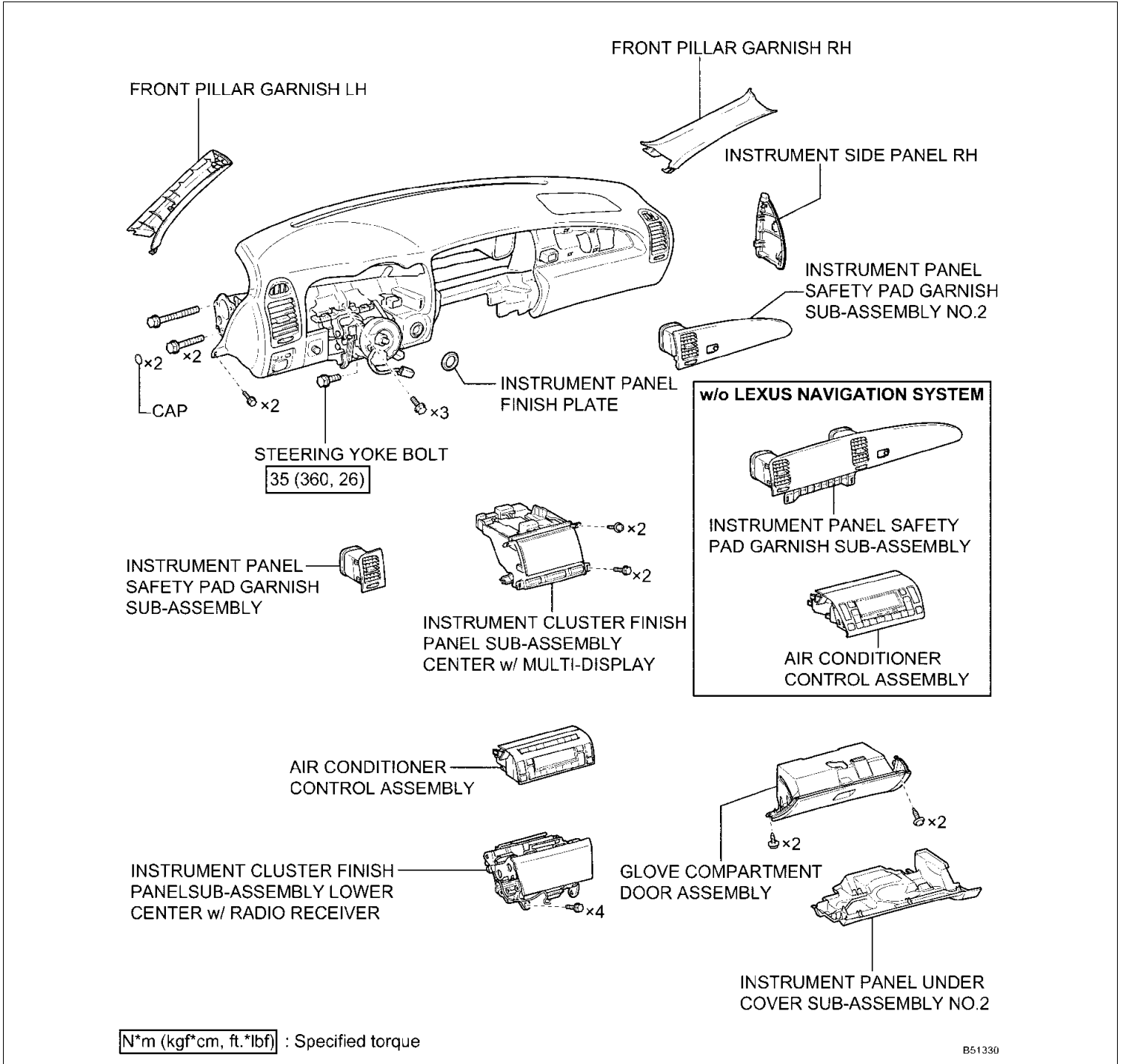


- Wait at least 90 seconds after disconnecting the cable from the negative battery terminal to prevent airbag and seat belt pretensioner deployment.
- Follow all precautions as outlined on TIS before servicing the SRS system.

## 2. REMOVE THE INSTRUMENT PANEL SAFETY PAD SUB-ASSEMBLY

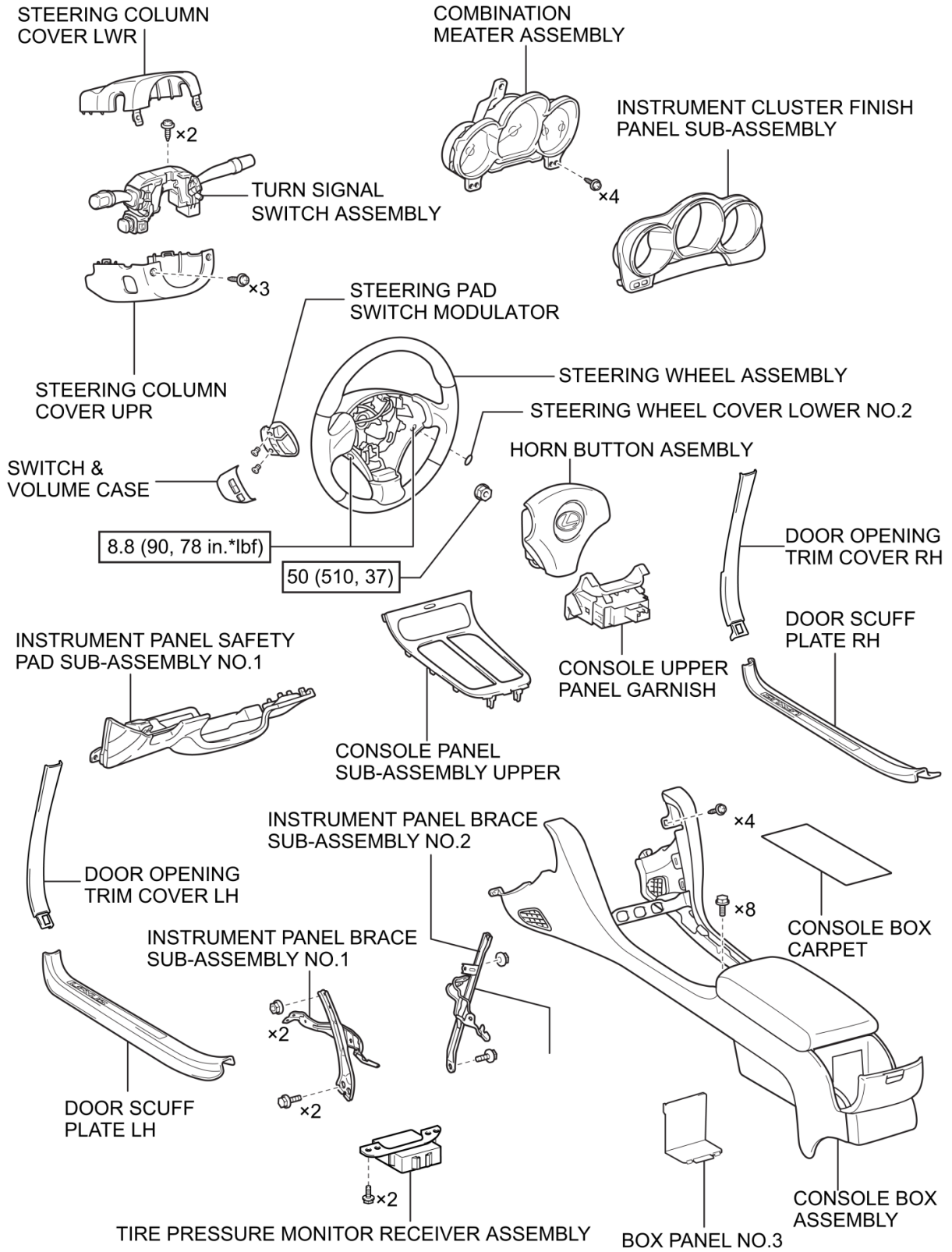
a) Refer to TIS for removal instructions

| <u>2002-2005 MY</u> | <u>2006 MY</u> | <u>2007 MY</u> | <u>2008 MY</u> | <u>2009MY</u>                   | <u>2009MY</u>                   | <u>2010MY</u> |
|---------------------|----------------|----------------|----------------|---------------------------------|---------------------------------|---------------|
|                     |                |                |                | 08/2008 – 10/2008<br>Production | 10/2008 – 08/2009<br>Production |               |



B51330

Removal instructions continued...



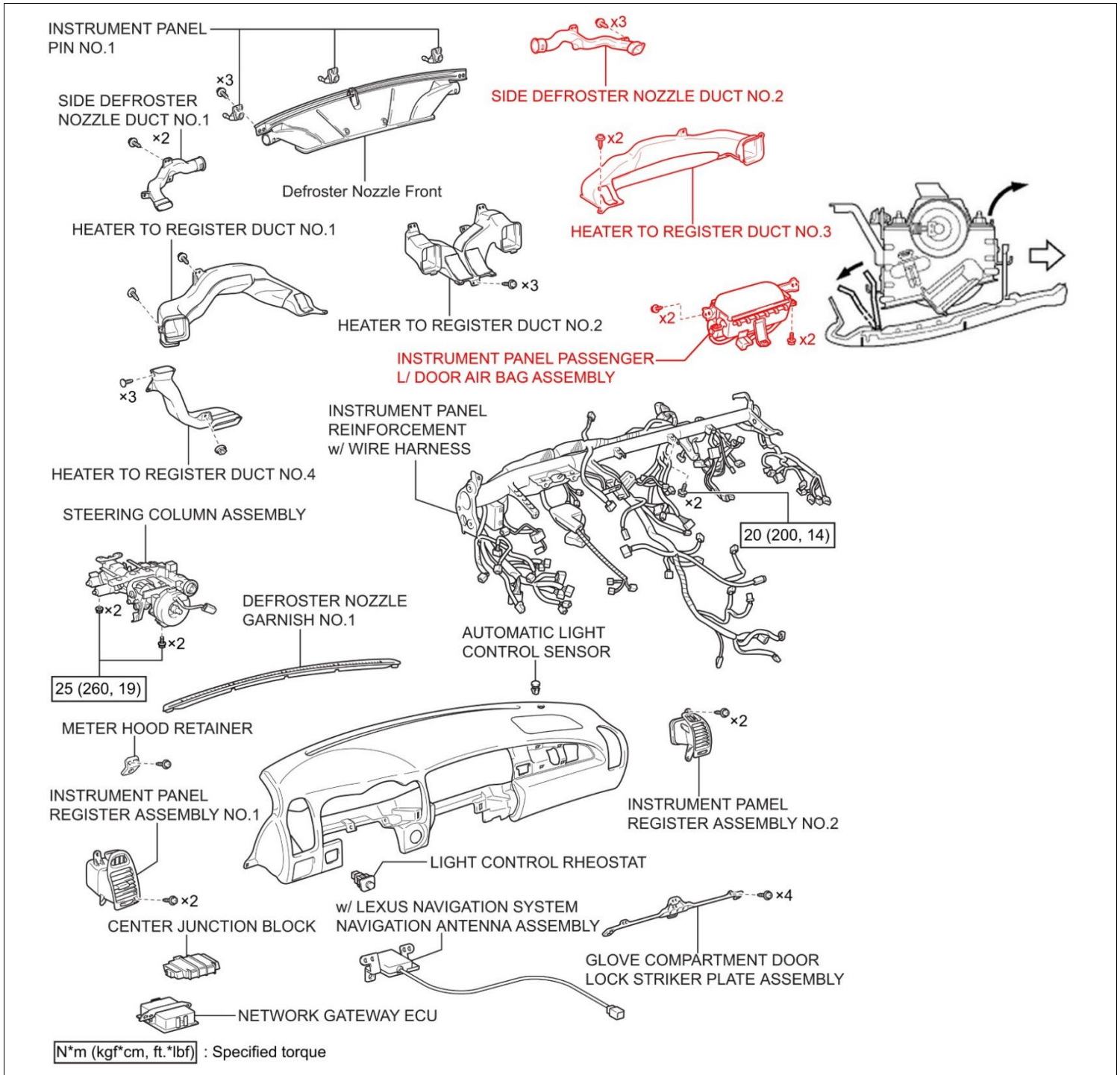
**N·m (kgf·cm,ft·lbf)** :Specified torque

B52001

### 3. REMOVE THE AIRBAG FROM THE INSTRUMENT PANEL

- Remove the 3 screws and the side defroster nozzle.
- Remove the 2 screws and the heater to register duct.
- Remove the 4 bolts, disengage the straps, and then remove the airbag assembly.

**NOTE: Only remove the components highlighted in red; there is *NO NEED* to remove any other components.**



## IX. AIRBAG ASSEMBLY RECORDING

### 1. LAUNCH THE SERIAL NUMBER RECORDING APPLICATION

[Video Supplement: Serial Number Recording](#)

Note: The Serial Number Recording Application for ELG is the same application used for DSC.



- The AIRBAG ASSEMBLY, ORIGINAL INFLATOR, and NEW INFLATOR serial numbers **MUST** be recorded using the barcode scanner (provided at the launch of SSC DLC).
- The barcode scanner application **MUST** be completed on every vehicle. These numbers **MUST** be included on every warranty claim that is submitted for inflator module replacement or the claim may be subject to debit.
- The technician performing the work **MUST** have valid TIS login credentials and an internet connection to perform the inspection and scanning process.

- a) Log in to TIS and input the VIN of the vehicle in the Vehicle Inquiry tab.
- b) Confirm the VIN is applicable and that the campaign has not been completed.
- c) Click on the link to be sent to the scanning application site.
- d) You can also log into the scanning site via the URL below

Log into the website via the URL below

<https://takata-scan-app.imagespm.info/>

User ID: Dealer Code

First time login password: xxxxx

The screenshot displays the Toyota TIS Vehicle Inquiry interface. At the top, navigation tabs include Home, TIS, TAS, PRS, and QAT. The 'Vehicle Inquiry' tab is active. Below the navigation, there are tabs for Library, Diagnostics, Tech Assistance, and Vehicle Inquiry. The 'Vehicle Identification Number Search' section contains a text input field with the VIN '1NX-BR32E-000000000' entered, which is circled in red and labeled 'a)'. Below this, the 'Vehicle Information' section displays details for a 2003 Toyota Corolla CE, including drive type, body type, engine family, transmission, date of first use, production date, plant code, exterior and interior colors, and fabric. A message at the bottom of this section states 'Vehicle accessories are not currently available. Try your query again later.' Below the vehicle information, there are tabs for Campaign, Service History, Warranty, DTC History, and Diagnostic Report. The 'Campaign' tab is selected, showing a 'Service Campaign' for a Safety Recall DOF Remedy Notice. The 'Completion Status' is 'Not Completed', which is circled in red and labeled 'b)'. A link to 'Check applicability for VIN' is also circled in red and labeled 'c)'. The footer of the page includes '© 2013 Toyota Motor Sales, Inc.' and links for Feedback, Privacy, and Legal.

# Login

Complete all required (\*) fields below.

**\* User ID (enter your 5-digit dealer code, or 6-digit for Canadian dealers eg. Cnnnnn format):**

**\* Password:**

**Login**

[Forgot Password?](#)

**Technician Information**

Please provide information below before searching for VIN.

**Technician Name:**

**SPIN ID (12 digit code):**

**Search**

a) Enter your name and SPIN ID into the site

**Enter VIN**

Enter the 17-digit Vehicle Identification Number to begin the search for this campaign.

**VIN:**

**Mileage on Vehicle:**

**Search**

b) Enter the VIN and vehicle mileage into the site

## 2. CONNECT THE BARCODE SCANNER

- Connect the barcode scanner to the USB port on the Techstream.
- The scanner will automatically connect and a beep will be heard when the scanner is ready.

### NOTE:

- **The scanner was provided for SSC DLC.**
- **The barcode scanner works best in low light conditions.**
- **Always hold the scanner directly in front of and parallel to the barcode label.**

### 3. SCAN THE AIRBAG SERIAL NUMBER

## ATTENTION: This information is **CRITICAL**

- a) Scan the **AIRBAG ASSEMBLY** serial number 2 times.
  - 1) Confirm the cursor is in the first serial number box then scan the serial.
  - 2) Position the cursor in the second serial number box then scan the serial.
- b) Click next.

**NOTE:**

- If both serial numbers that are entered do not match, confirm and reenter.
- If the serial number barcode will not scan, it can be entered manually.

#### AIRBAG SERIAL NUMBER IDENTIFICATION

- The airbag serial number is **ALWAYS** the **12 DIGITS** located between the asterisks.
- The 3 digits before the asterisk **ARE NOT** part of the serial number, and **SHOULD NOT** be entered or an inaccurate response may be returned.

**Airbag Serial Number Label Example**



The **AIRBAG ASSEMBLY** serial number and the **INFLATOR** serial number are **DIFFERENT**. The **AIRBAG ASSEMBLY** serial number **MUST** be recorded prior to replacement.

### ORIGINAL Airbag Assembly Serial Number

Scan or enter the **original** Airbag Assembly serial number into the website.

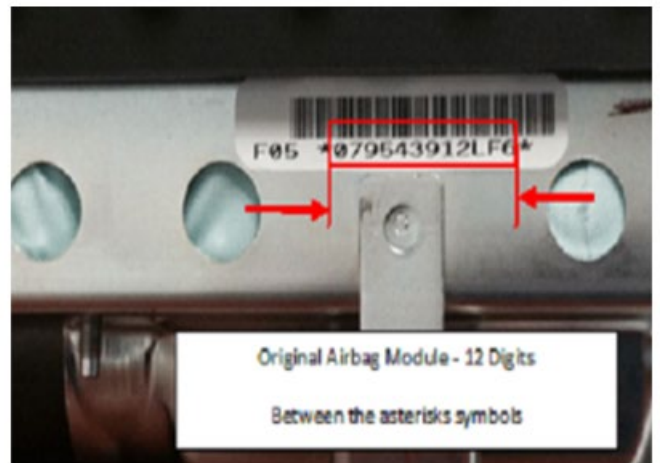
VIN:  
Model / Campaign:

\* Serial Number of *Original* Airbag Assembly:

\* Re-confirm the Serial Number of *Original* Airbag Assembly:

Check if the airbag serial number is missing or not visible, or if installing a new airbag assembly

**Search**



Original Airbag Module - 12 Digits  
Between the asterisks symbols

## AIRBAG SERIAL NUMBER IS MISSING OR IS UNREADABLE

**\*NOTE: Skip this section and jump to Section X if the airbag assembly is scannable\***



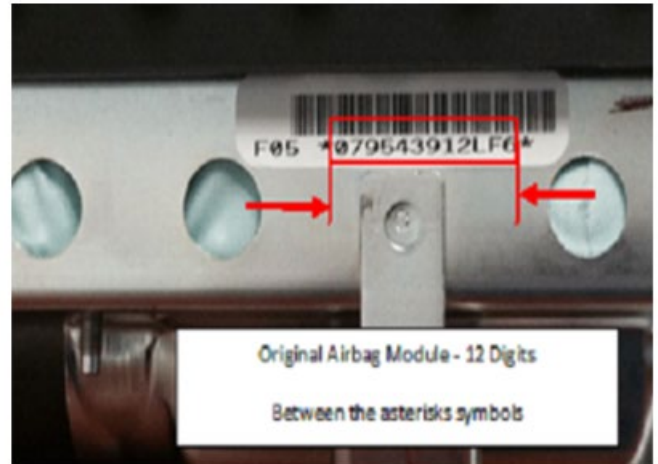
If the airbag serial number and barcode are not legible or are not present, check the box in the application indicating the serial number is not legible and contact your regional representative.

- a) If the airbag serial number cannot be scanned or is not present check the box as shown below.

### ORIGINAL Airbag Assembly Serial Number

Scan or enter the **original** Airbag Assembly serial number into the website.

VIN:  
Model / Campaign:  
\* Serial Number of *Original* Airbag Assembly:  
\* Re-confirm the Serial Number of *Original* Airbag Assembly:  
 Check if the airbag serial number is missing or not visible, or if installing a new airbag assembly  
Search



**Checking this box requires Air Bag Assembly replacement.**

**\*\*Note\*\* Contact your region in the event that you are unable to read the serial number.  
DO NOT ATTEMPT TO INSTALL INFLATOR**

- b) After the Region approves the Airbag Assembly replacement and the new part is received, scan the NEW airbag barcode in the Serial Number Recording Application.

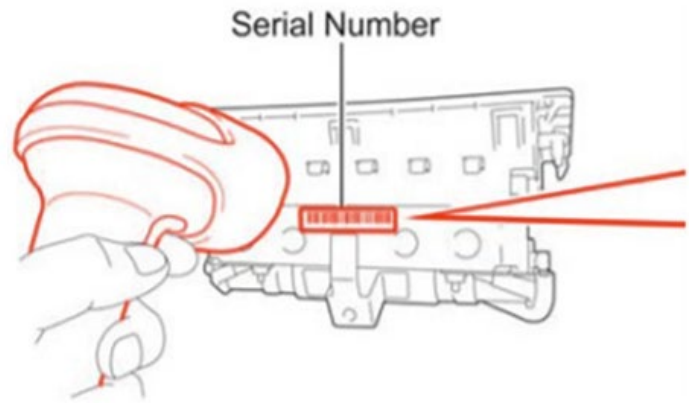
## NEW Serial Number

Scan or enter the **new** Airbag Assembly Serial Number into the website.

VIN:

\* Serial Number of New Airbag Assembly:

\* Re-confirm the Serial Number of New Airbag Assembly:



The new **AIRBAG ASSEMBLY** serial number **MUST** be recorded prior to reinstallation to track the airbag assembly to the vehicle.

**Skip to Section XI If a new airbag assembly was installed instead of an inflator**

## X. INFLATOR REPLACEMENT

[Video Supplement: Inflator Replacement](#)



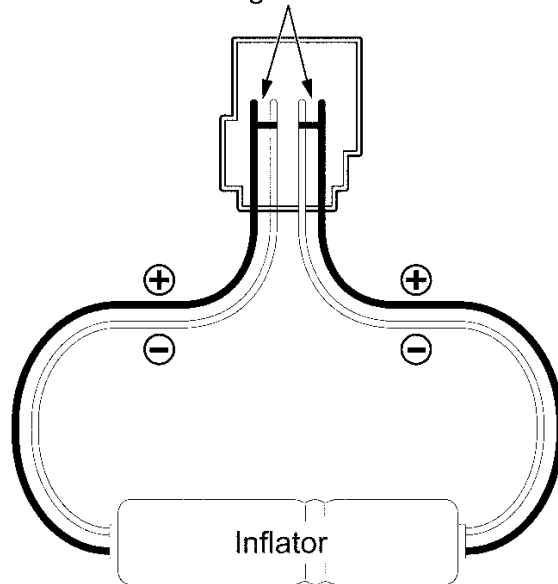
### CRITICAL INFORMATION – READ THOROUGHLY



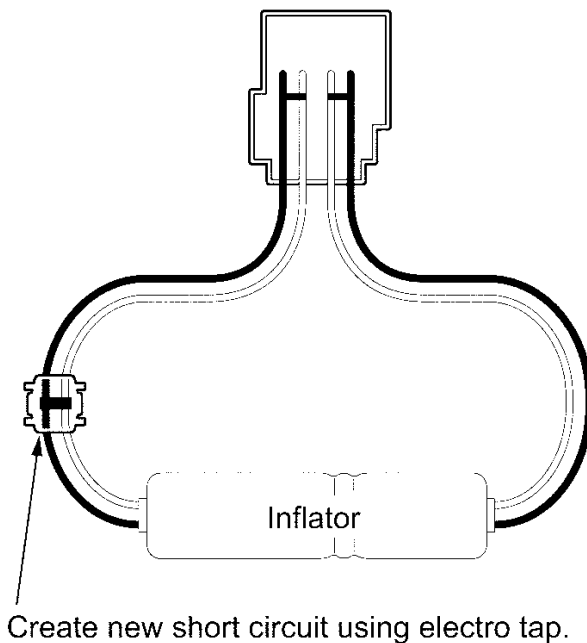
The connector of the inflator module contains a short circuiting mechanism to eliminate voltage variances when the connector (1) is disconnected. To allow for the replacement of the inflator module, a new short circuit (2) **MUST** be created before cutting the wires (3) and removing the inflator. The following steps **MUST** be followed exactly as described to ensure the work is completed correctly and safely.

(1)

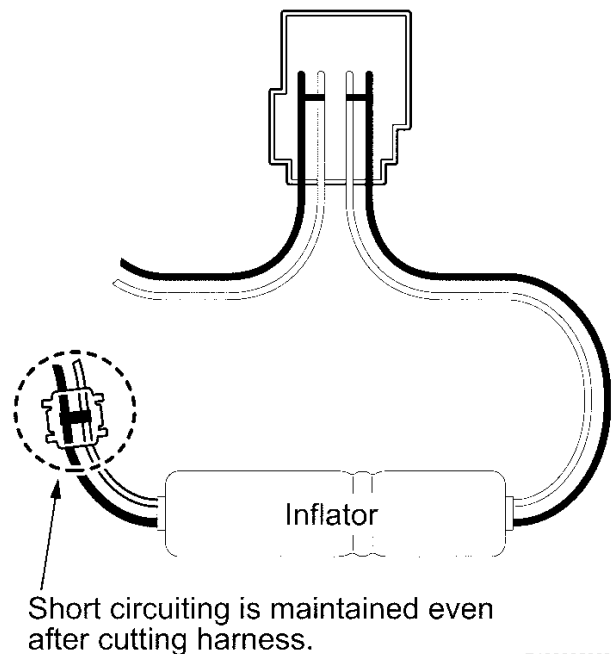
Short circuiting on both sides.



(2)

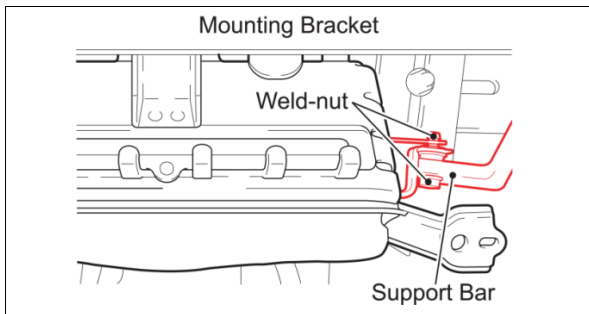


(3)

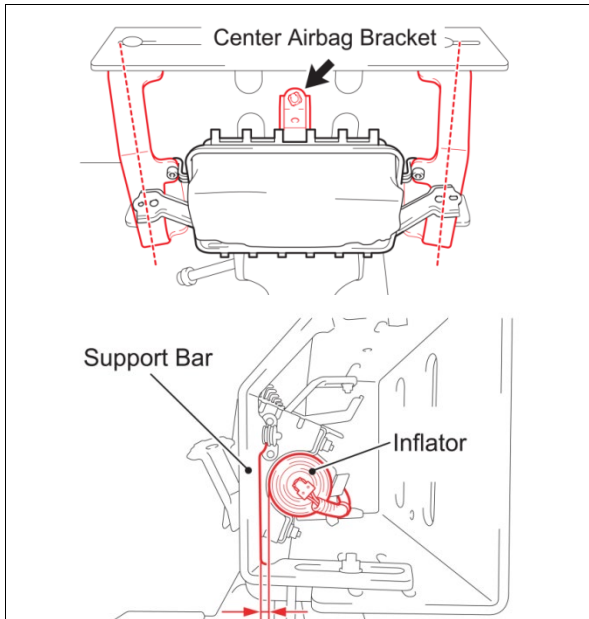


R1302250036E

1. MOUNT THE AIRBAG IN THE MOUNTING BRACKET

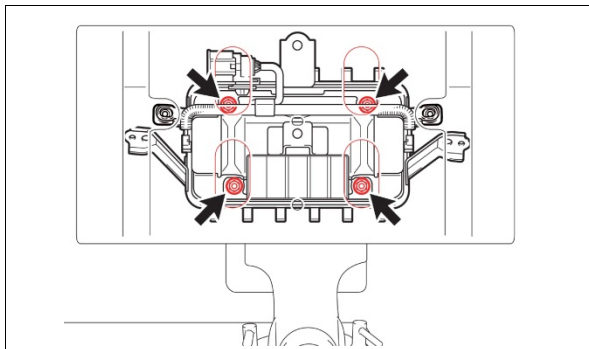


a) Position the airbag so that the airbag weld-nuts are between the support bars and mounting bracket and install the bolts.



b) Position the support bars at an angle as shown in the illustration.

c) Confirm the center airbag bracket is facing up.



d) Position the airbag so that all four nuts can be removed through the access holes.

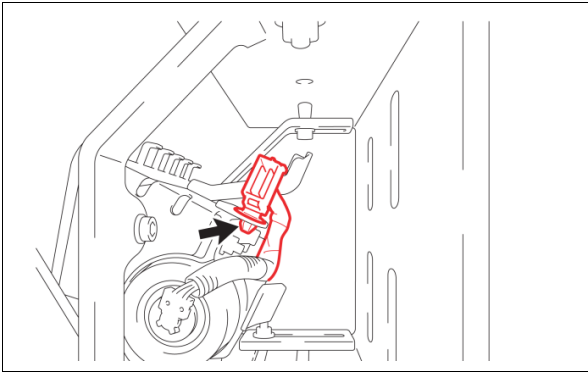
e) Tighten the nuts holding the support bars to the mounting bracket.

f) Confirm the following:

- Mounting bracket is secure in the vise.
- Airbag is secure in the support bars.
- Support bars are secure on the mounting bracket using 1 bolt/nut at the top of each support bar and 2 nuts/bolts at the bottom of each support bar.

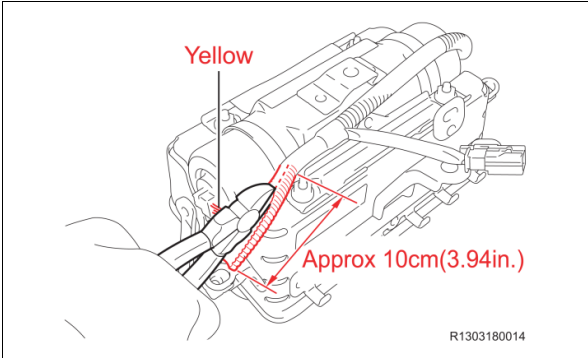
**NOTE: The position of the support bars is critical to create clearance for the removal of the inflator.**

|  |   |  |
|--|---|--|
|  | <b>CRITICAL INFORMATION – READ THOROUGHLY</b>   |  |
|  | <b>ALWAYS</b> keep as much of your body as possible in front of the bracket when working on the airbag assembly.  |  |
|  | <b>Remember to periodically touch a metallic part of the vehicle to discharge static electricity in the body.</b> |  |



## 2. PREPARE TO INSTALL THE SHORT CIRCUIT

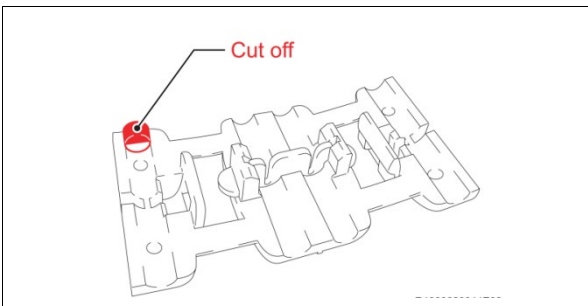
a) Disengage the harness clamp.



b) Cut the yellow corrugated tube on the harness approximately 4 inches (10 cm) using nippers.



- **DO NOT** damage the wires in the tube.
- **DO NOT** use a knife or razor blade to cut the tube to avoid damaging the wires.
- This may be performed on either end of the inflator.

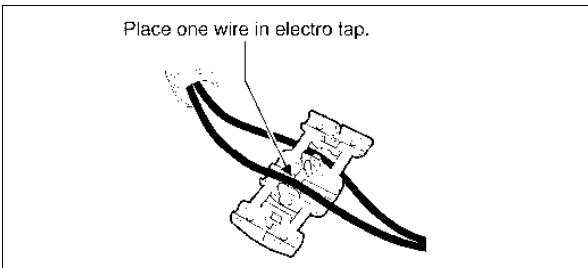


c) Cut off the tab of the electro tap shown in the illustration.

**NOTE: The electro tap is included in the inflator parts kit.**

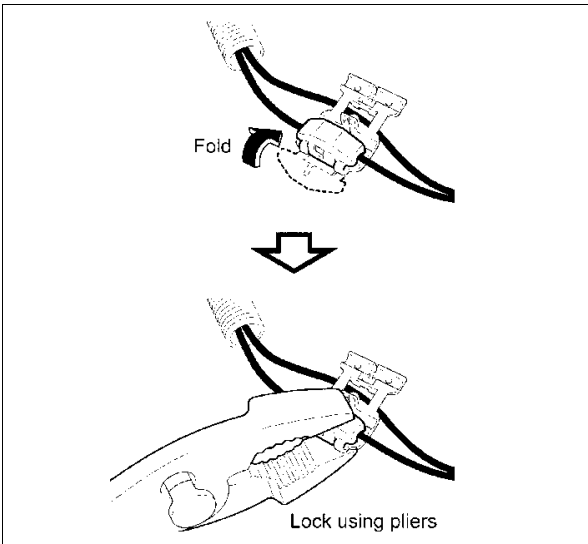


**This tab *MUST* be removed to ensure a good short.**



## 3. CREATE A NEW SHORT CIRCUIT IN THE INFLATOR HARNESS

a) Place one wire in the electro tap as shown in the illustration.

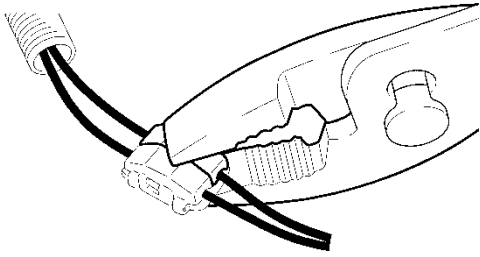


b) Fold and pinch the half of the electro tap with the wire and use pliers to lock the electro tap.

**NOTE:**

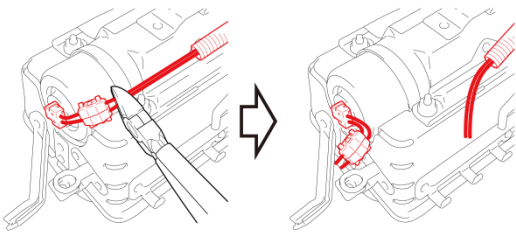
- **DO NOT** work on both wires at the same time to avoid errors.
- Pliers **MUST** be used to confirm the electro tap is firmly locked in place.

Lock the other wire.



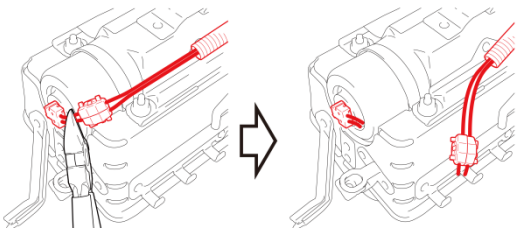
**OK**

Cut at opposite side to inflator



**NG**

DO NOT cut at inflator side



- c) Set the other wire in the electro tap and lock it in place using pliers.

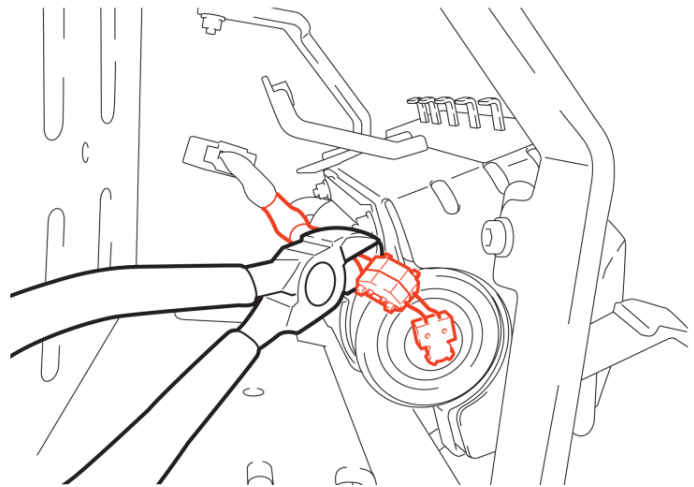
**STOP**

**DO NOT** measure resistance of the inflator wires, this may cause accidental activation.

#### 4. CUT THE INFLATOR WIRES

- a) Cut the 2 wires at the side of the electro tap that is farthest away from the inflator.

Cut the wires opposite the inflator



**STOP**

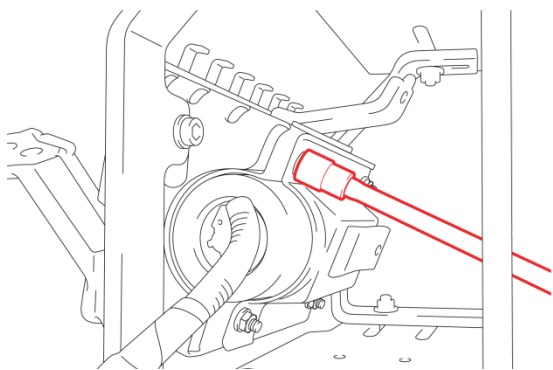
**DO NOT** measure resistance of the inflator wires, this may cause accidental activation.

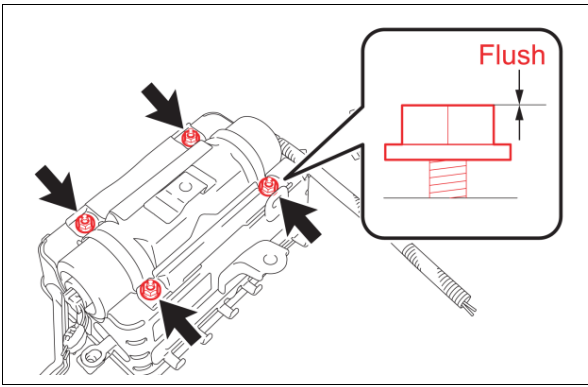
#### 5. LOOSEN THE SELF LOCKING NUTS

- a) Use the access holes in the bracket to loosen the 4 nuts.

**NOTE:**

- **DO NOT** use power tools.
- **DO NOT** remove the nuts or the bag may fall out of the airbag assembly.

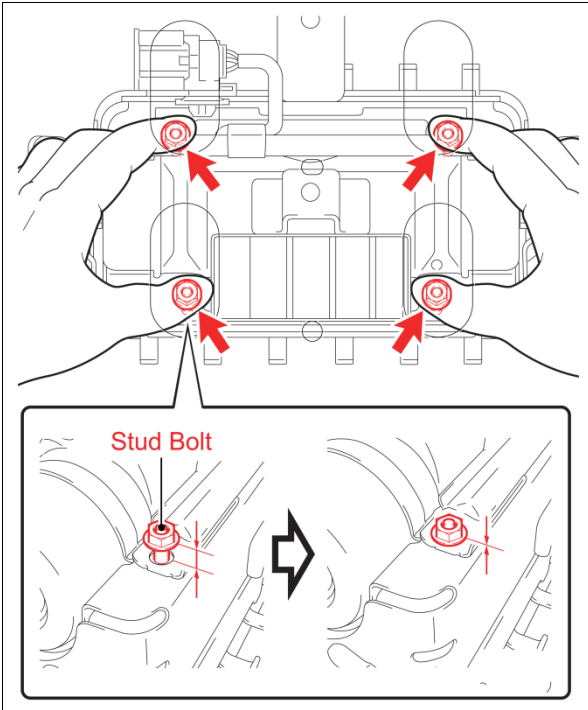




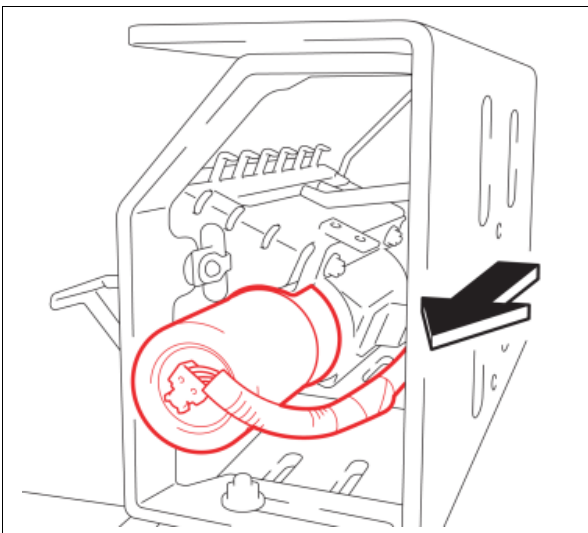
- b) Loosen the nuts until they are flush with the studs.
  - c) Use a marker to mark the nuts as they are not to be reused.
- NOTE: DO NOT reuse the old nuts, new nuts *MUST* be used.**

## 6. REMOVE THE INFLATOR

- a) Gently push in the 4 studs until the nuts contact the airbag case to allow for inflator removal.



- b) Remove the inflator from the airbag assembly and place it on a safe work surface.





**ENSURE YOU ENTER BOTH THE OLD AND NEW INFLATOR SERIAL NUMBER IN THE APPROPRIATE SPOT OF THE APPLICATION  
-DO NOT ENTER THE AIRBAG SERIAL NUMBER FOR THIS STEP-**



**7. SCAN THE OLD AND NEW INFLATOR SERIAL NUMBER**

- a) Scan the **OLD** inflator serial number and mark the old inflator so that it will not be reused.
- b) Scan the **NEW** inflator QR code.

**ATTENTION: This information is CRITICAL**

- It is used to confirm the correct inflator is removed from the vehicle.
- It is recorded by TMS to trace the return parts shipment.
- It is used to track the new inflator that is being installed in the vehicle.

**ORIGINAL Inflator Serial Number**

Scan or enter the **original** Inflator serial number into the website.

VIN: 2T1BR32E57C810829  
 Model / Campaign: 2007 Corolla / E04

\* Serial Number of **Original** Inflator:

  
 \* Re-confirm the Serial Number of **Original** Inflator:
  
 Check if the inflator serial number is missing or not visible, OR if installing a new airbag assembly

**Search**



**REPLACEMENT Inflator Serial Number**

Scan or enter the **replacement** Inflator serial number into the website.

VIN: 2T1BR32E57C810829  
 Model / Campaign: 2007 Corolla / E04

\* Serial Number of **Replacement** Inflator:

  
 \* Re-confirm the Serial Number of **Replacement** Inflator:
  

**Search**



c) If the inflator serial number cannot be scanned or is not present check the box as shown below.

## ORIGINAL Inflator Serial Number

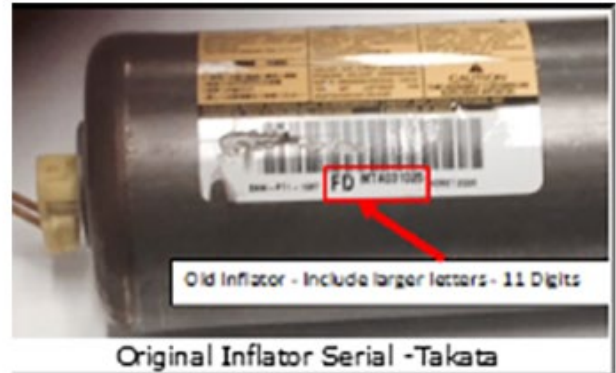
Scan or enter the *original* Inflator serial number into the website.

VIN: 2T1BR32E57C810829  
Model / Campaign: 2007 Corolla / E04

\* Serial Number of *Original* Inflator:

\* Re-confirm the Serial Number of *Original* Inflator:

Check if the inflator serial number is missing or not visible. OR if installing a new airbag assembly



**Checking this box requires Air Bag Assembly replacement.**

**\*\*Note\*\* Contact your region in the event that you are unable to read the serial number.**

**DO NOT ATTEMPT TO INSTALL INFLATOR**

d) Confirm agreement by checking the two boxes.

e) Record the Warranty Authorization # to be included in the warranty claim.

f) Place the old inflator in the parts box and take it immediately to the parts department.

### NOTE:

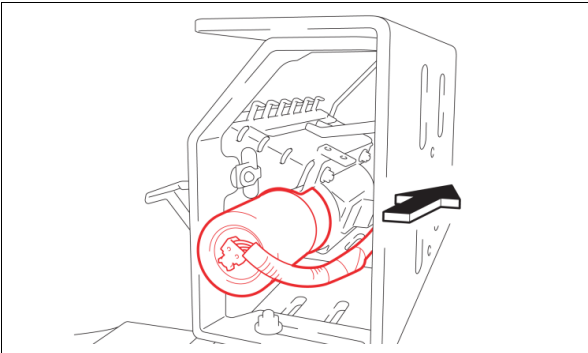
- Confirm the cursor is in the correct serial number input box before scanning.
- If the serial number barcode will not scan, it can be entered manually.
- If there are any difficulties or concerns with this process, email [quality\\_compliance@toyota.com](mailto:quality_compliance@toyota.com) with details.

### Step e)

#### Takata Scan App (TEST v2) Final Results

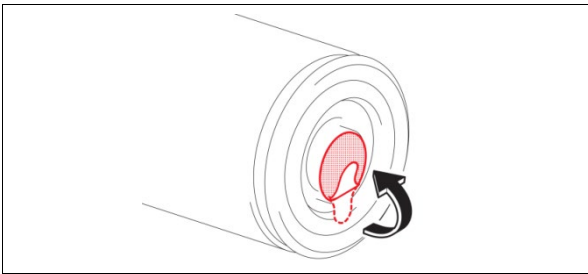
You can [Print Screen](#) or [Search Another VIN](#).

|                                       |   |
|---------------------------------------|---|
| <b>Results:</b>                       | <b>Inflator Replacement Required</b>  |
| <b>Warranty Authorization Number:</b> | <b>77515K46</b><br><small>This number is required for the warranty claim. Print and save this screen for your records</small> |
| VIN:                                  | 2T1BR32E57C810829   |
| Vehicle:                              | 2007 Corolla  |
| Campaign:                             | E04   |
| Original Airbag Serial:               | 123456789K12  |
| Replacement Airbag Serial:            |   |
| Original Inflator Serial:             | W0123456789   |
| Replacement Inflator Serial:          | W0123456789   |
| Scan Date:                            | 12/22/2020 08:47AM (mm/dd/yyyy)   |



## 8. INSTALL THE NEW INFLATOR

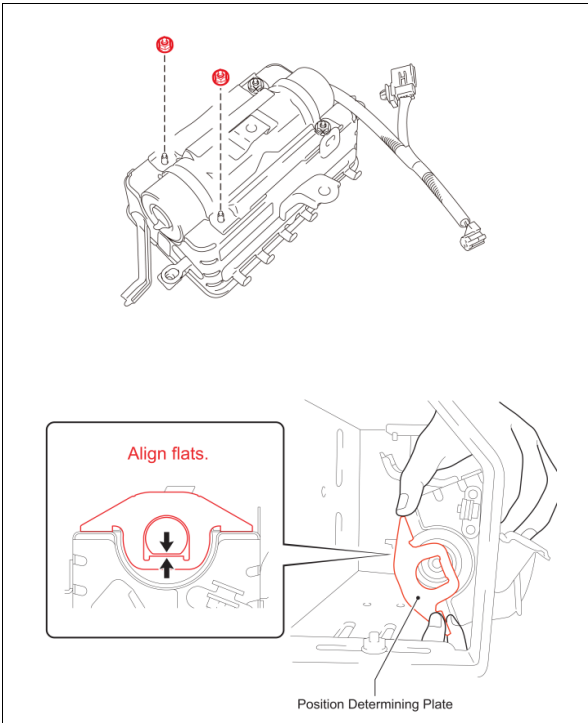
- a) Carefully slide the new inflator into the airbag assembly.



## 9. FOLD THE CONNECTOR SEAL

- a) Fold the seal in order to prevent it from being caught under the position determining plate in the next step.

**NOTE: DO NOT fully remove the seal until just before connecting the harness.**

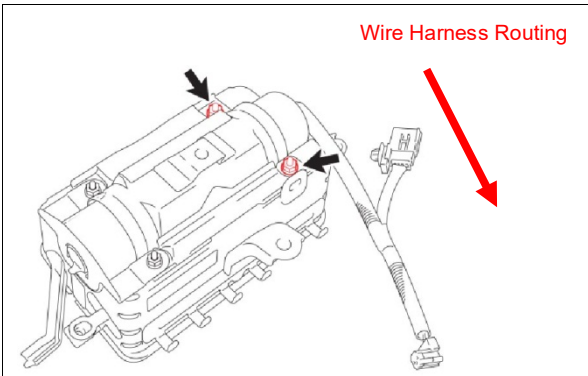


## 10. INSTALL THE NEW SELF LOCKING NUTS AND POSITION DETERMINING PLATE

- a) Remove the 2 old nuts.
- b) Install the position determining plate and install the 2 **NEW** nuts by hand. They will be torqued on a later step.



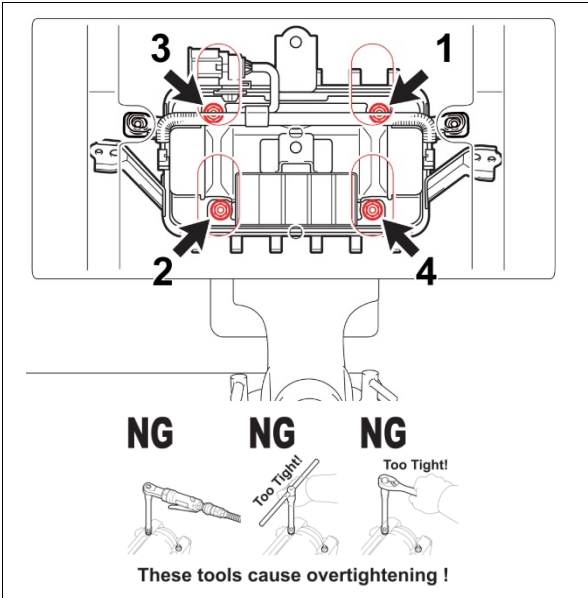
The position determining plate can only be installed on one side in one position, confirm the plate is aligned correctly.



- c) Remove the 2 old nuts.
- d) Install the 2 **NEW** nuts by hand. They will be torqued on the next step.



Ensure the position of the new wire harness matches the illustration. If the wire harness is not oriented correctly, the connector will not line up with the retaining bracket. DO NOT use this inflator if the harness is not correctly routed.



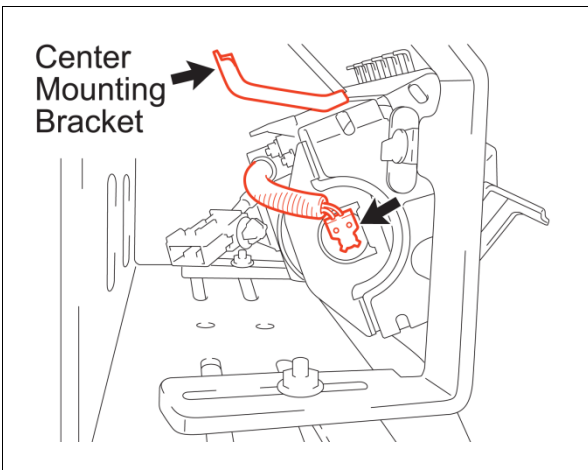
## 11. TORQUE THE NUTS

- Push the inflator so that it contacts the position determining plate.
- Tighten the nuts evenly in two increments following the sequence shown in the illustration. Use a socket driver or torque wrench to tighten the nuts.

**Torque: 35in. lbf (3.9N·m)**



- If the inflator is not positioned correctly in the position determining plate the airbag may not deploy correctly when activated.
- There will be some resistance when tightening the nuts because they are self-locking, confirm the nuts are tightened correctly.
- DO NOT** use a power tool, T-handle, or ratchet when tightening the nuts to avoid over torquing.

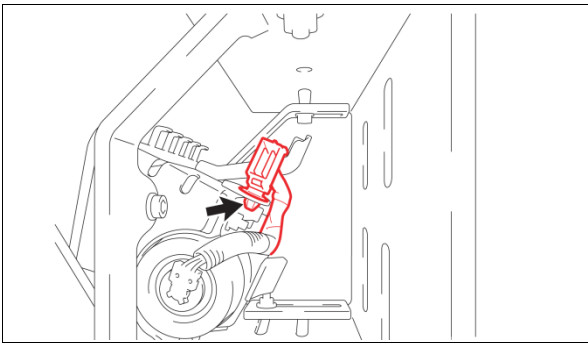


## 12. CONNECT THE INFLATOR CONNECTOR

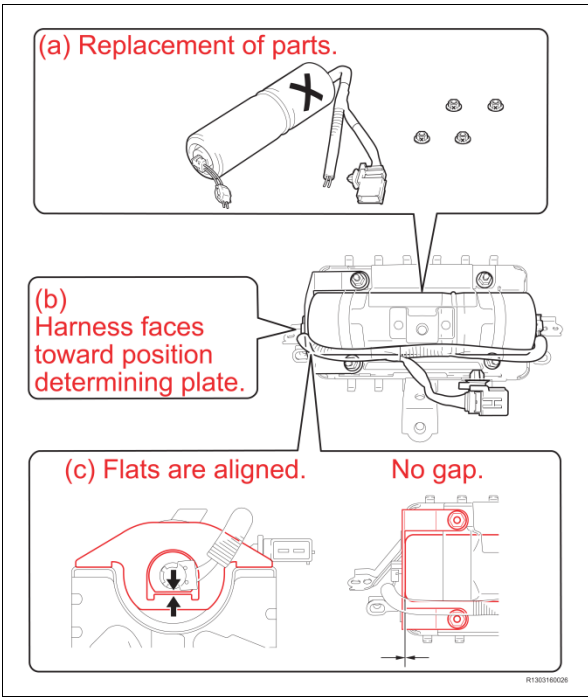
- Remove the connector seal from the inflator.
- Confirm the alignment of the harness connector as shown in the illustration, then connect the harness. The connector wires should lead toward the center mounting bracket on the airbag assembly.



- The connector should be connected **IMMEDIATELY** after removing the seal.
- The connector is one-way, once it is installed it **CANNOT** be removed.
- If the connector is installed in the incorrect orientation the terminals may be bent or the connector may not fully engage.



## 13. CONNECT THE HARNESS CLAMP



**14. INSPECT THE AIRBAG BEFORE INSTALLATION**

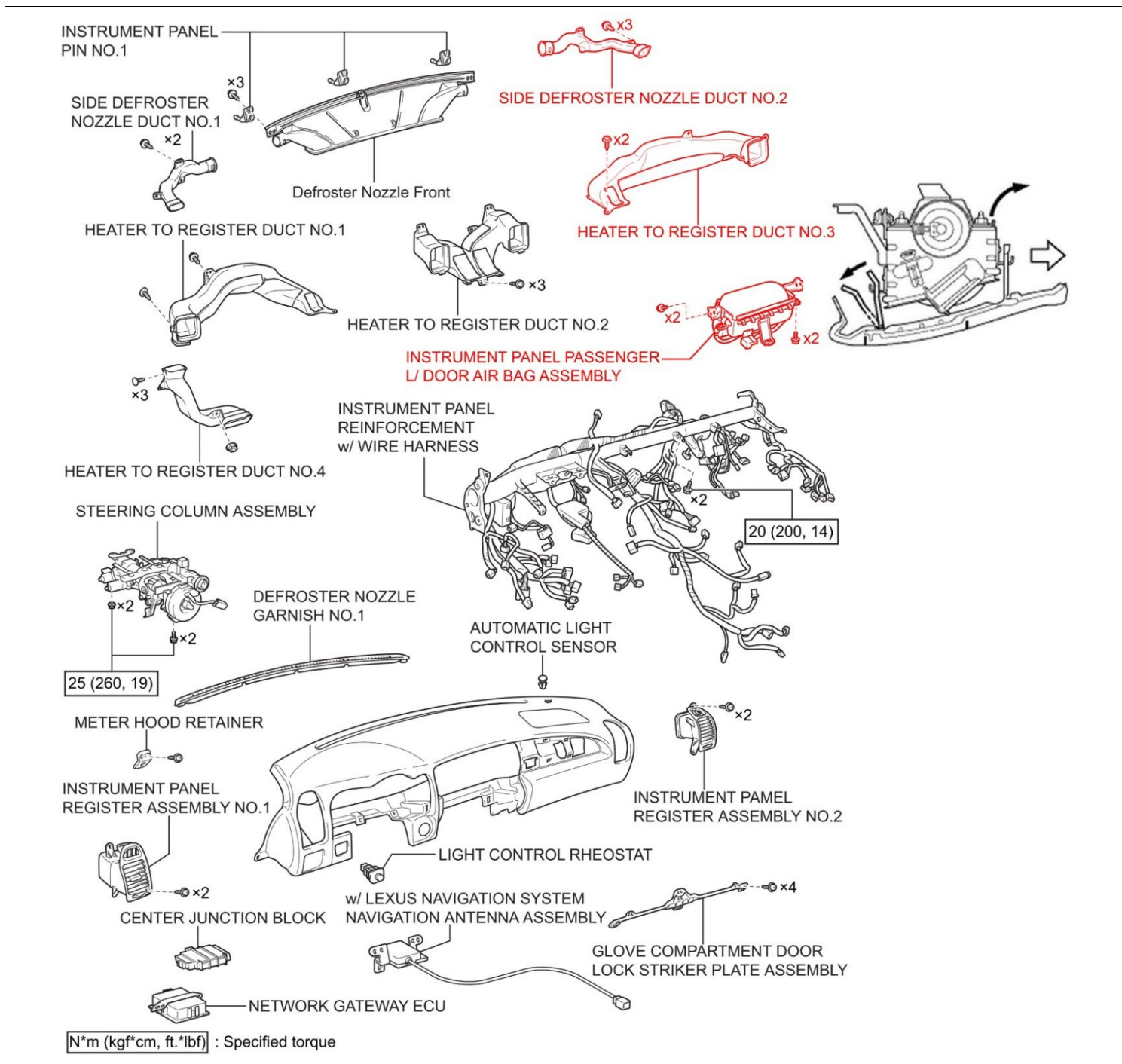
- a) Confirm that the 4 **NEW** nuts are installed and tight.
- b) Confirm the **NEW** position determining plate is installed.
- c) Confirm the flats on the position determining plate and inflator are aligned.

**STOP** If the new wire harness is not routed as shown, you will be unable to attach the connector to the support bracket. If the harness is not routed correctly **DO NOT** use this inflator.

## XI. VEHICLE REASSEMBLY

### 1. REINSTALL THE AIRBAG ASSEMBLY IN THE INSTRUMENT PANEL

- Position the airbag assembly in the instrument panel, engage the straps, and then install the 4 bolts.
- Install the 2 screws and the heater to register duct.
- Install the 3 screws and the side defroster nozzle.



### 2. INSTALL THE INSTRUMENT PANEL SAFETY PAD SUB-ASSEMBLY

- Refer to TIS for reinstallation instructions

[2002-2005 MY](#) [2006 MY](#) [2007 MY](#) [2008 MY](#)

[2009MY](#)  
08/2008 – 10/2008  
Production

[2009MY](#)  
10/2008 – 08/2009  
Production

[2010MY](#)

3. RECONNECT THE NEGATIVE BATTERY CABLE
4. PERFORM A HEALTH CHECK AND DIAGNOSTIC REPORT

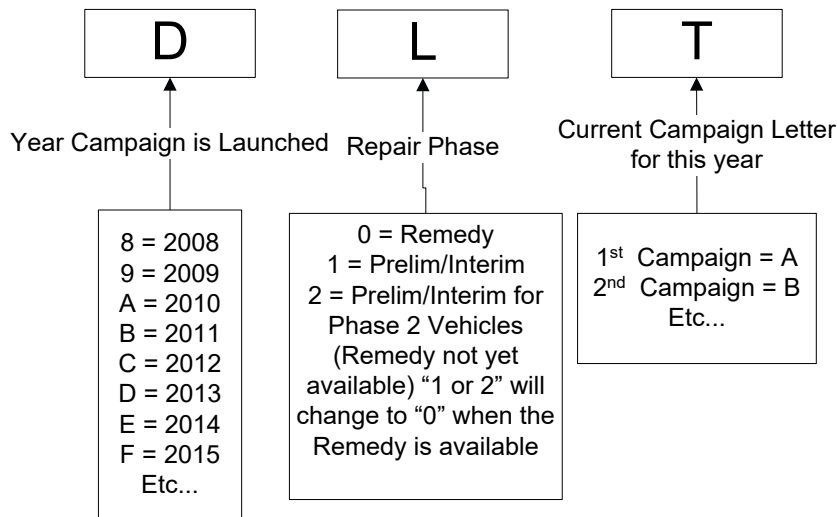
## ◀ VERIFY REPAIR QUALITY ▶

- Confirm all precautions are followed to ensure safety during the repair
- Confirm the entire serial number checker application is completed and the warranty authorization # is recorded on *EVERY* vehicle
- Confirm the old inflator is handled safely and given to the appropriate parts professional for shipment
- Confirm the inflator harness connector is fully engaged and that the position determining plate is installed correctly

If you have any questions regarding this update, please contact your area representative.

## XII. APPENDIX

### A. CAMPAIGN DESIGNATION DECODER



### B. CAMPAIGN PARTS DISPOSAL

#### [Video Supplement: Parts Handling](#)

**ALL** inflators that are removed from vehicles under this campaign **MUST** be packaged and shipped back to the inflator manufacturer following the manufacturer's instructions. The instructions can be found in the following locations:

- Attached to the dealer letter
- Included in the parts box
- The laminated aid that was provided at the launch of the campaign