



CE White Quasi-Static Passenger Seat Gusset Fasteners

RECALL

Models Affected: Vision and All American with Gusset Mounted CE White Quasi-Static Seats

ISSUE

On some affected buses, incorrect fasteners may have been used to secure the seat gusset reinforcement to the wall, resulting in a non-compliance with FMVSS 210.

CORRECTIVE ACTION

Inspect the seat mounting fasteners securing the gusset reinforcement to the wall. If a fastener is incorrect, install additional seat gusset reinforcement bracket.

PROCEDURE

WARNING: Always follow all Federal, State, Local and Shop safety standards and use proper safety equipment, and thoroughly read and understand all instructions before performing these procedures.

NOTE: This procedure outlines the process for one seat. This process must be followed for every Quasi-Static (QS) 3-point seat belt, seat installed in the bus.

Inspect for correct mounting fasteners.

Locate the seat gusset reinforcement bracket for each Quasi-Static, 3-point seat. It will be fastened to the wall, immediately below the seat ledge, with at least two (2) grade 8 bolts. Visually check the bolts for six (6) dashed markings on the head of each bolt as referenced in Figure 1. If these markings are not present or there are other markings, perform the remaining instructions.

Gusset Reinforcement Bracket, wall mounted, under seat ledge
NOTE:
This bracket is ONLY installed on Quasi-Static 3-point seat belt seats

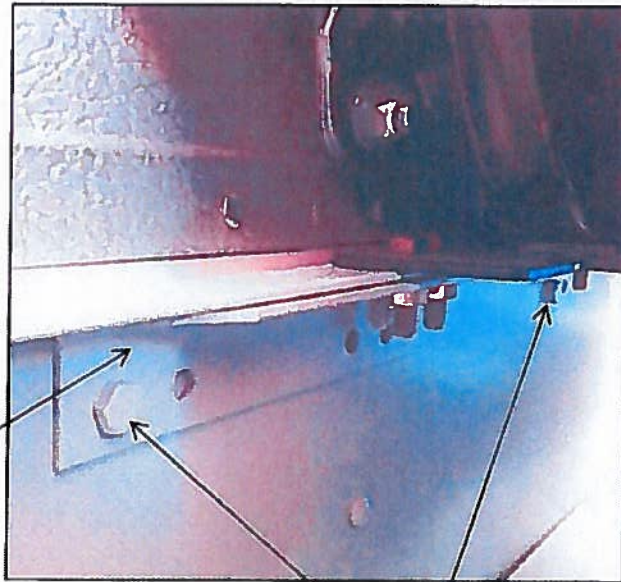


Figure 1



GRADE 8

RECALL CAMPAIGN R15YC



CE White Quasi-Static Passenger Seat Gusset Fasteners

RECALL

Repair procedure for all Quasi-Static Seat (QS) with gusset/floor mounting or gusset/track mounting.

1. Remove and retain the two rear most mounting fasteners attaching the seat to the gusset. Reference Figure 2 for location of the two fasteners.
2. Place the new reinforcement bracket (10041875) into position and reinstall the two fasteners. Reference Figure 3 and Figure 4 for bracket location. Tighten fasteners snugly but do not torque.
3. Using a 25/64" drill bit (obtain locally), locate the rear hole on reinforcement bracket 10041875. Using this hole as a guide, drill thru the gusset and lower seat gusset reinforcement bracket.
4. Clean away metal shavings and install new 3/8" capscrew (00803213) and nut (02171809). Reference Figure 4 for an installed reinforcement bracket.
5. Torque new 3/8" nut (02171809) to 29-33 ft. lbs.
6. Torque two (2) existing 5/16" nut(s) to 12-13 ft. lbs.

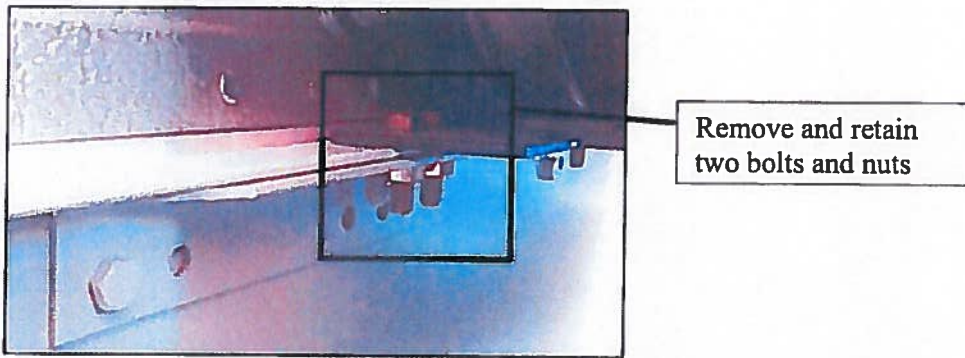


Figure 2

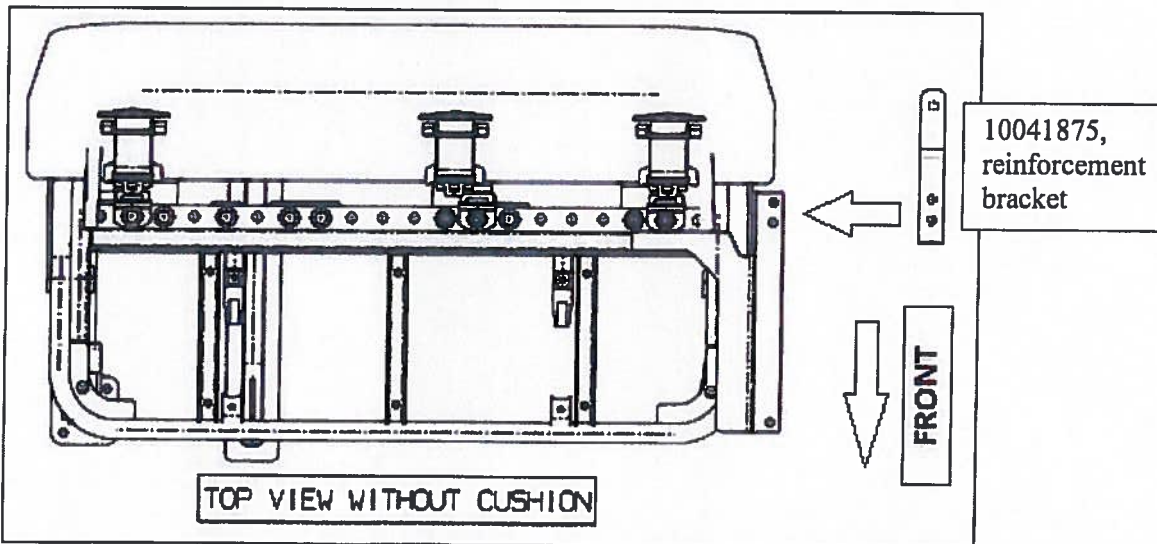


Figure 3

RECALL CAMPAIGN R15YC



**CE White Quasi-Static
Passenger Seat Gusset
Fasteners**

RECALL

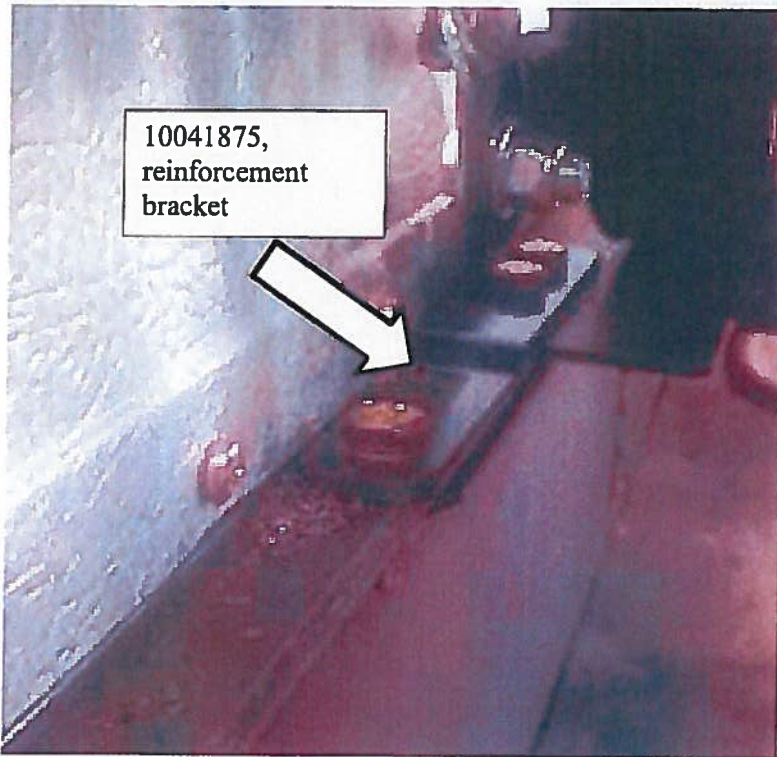


Figure 4

REMINDER: Re-torque all seat bolts per your maintenance schedule located in your owner's manual or service manual.

Parts list per seat

Part Number	Description	Quantity	Torque Value
10041875	Bracket, Mounting, CEW QS Seat	1 per seat	N/A
00803213	Capscrew, 3/8-16x1 1/4" GR8	1 per seat	N/A
02171809	Nut, Hex HD, 3/8-16, SM FLG	1 per seat	29-33 ft. lb.

RECALL CAMPAIGN R15YC



Incorrect Fastener Installed Forward of Side Emergency Door (S.E.D.)

RECALL

- Remove passenger seat just forward of S.E.D.
- Remove passenger window retainer screw/washer at S.E.D.
- Drill out inside side panel attaching rivets at door, window ledge and seat gusset (see Photo # 1).
- Inside panel are also attached with adhesive, use puddy knife to help separate panel from bow, window ledge and seat gusset. Pull inside side panel back enough to access back side of seat gusset where seat reinforcement angle attaches.
- Remove self-tapping bolts in seat reinforcement angle. **If one of the 3 self-tapping bolts or a rivet is installed in bow, do not remove bolt or rivet (see photo # 2).**
- Back drill 3 holes and install 3/8-16 x 1 ¼" grade 8 bolts (00803213) in reinforcement angle with flat washer (02028546) and nut (02171809). Flat washer to be installed on back side of seat gusset (between interior and exterior panels).
- Torque 3/8 bolts to 29-33 ft. lbs.
- Clean old adhesive from inside side panel, window ledge, seat gusset and apply Magnobond adhesive (10016411) to panel and reinstall with correct rivets per photo # 1 instruction. **No adhesive required at panel to S.E.D. bow vertical joint.**
- Reinstall passenger window retainer screw/washer and seat assembly per original installation.

R 1 5 Y C

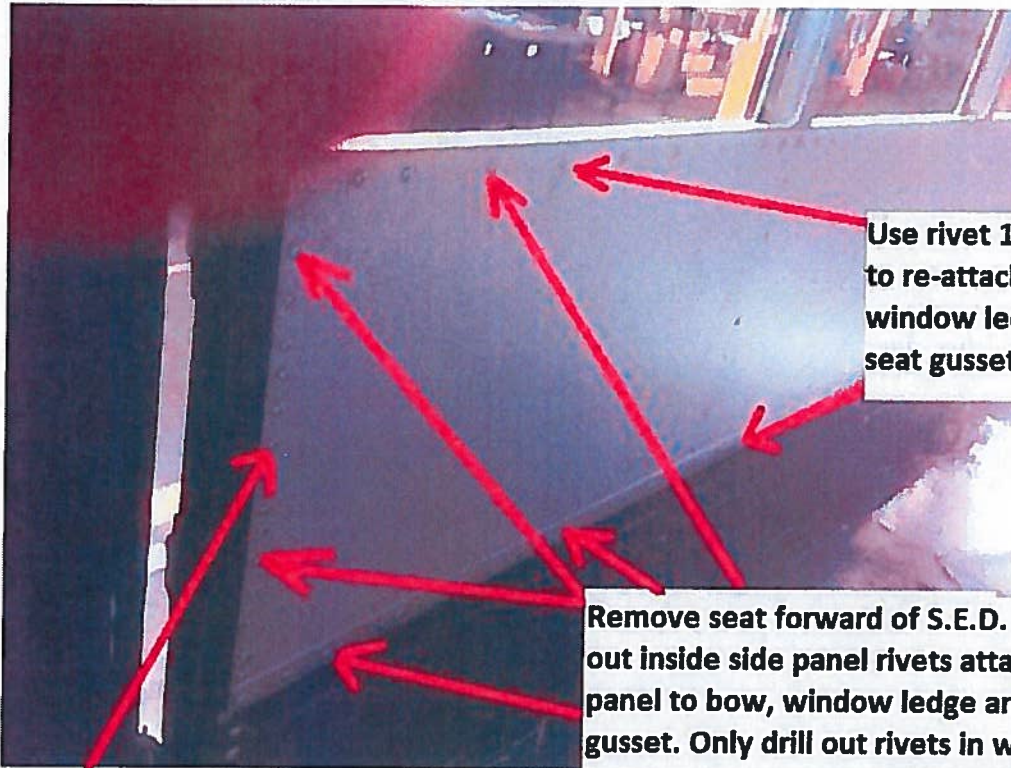
RECALL CAMPAIGN



Incorrect Fastener Installed Forward of Side Emergency Door (S.E.D.)

RECALL

Photo # 1



Use rivet 01549211 to re-attach panel to S.E.D. bow.

Use rivet 10034534 to re-attach panel at window ledge and seat gusset.

Remove seat forward of S.E.D. Drill out inside side panel rivets attaching panel to bow, window ledge and seat gusset. Only drill out rivets in window ledge and seat gusset 12"-18" forward of S.E.D. Peel back inside panel to gain access to back side of seat gusset.

RECALL CAMPAIGN R15YC



RECALL

Incorrect Fastener Installed Forward of Side Emergency Door (S.E.D.)

Photo # 2



Parts List:

Part #	Qty (per S.E.D.)	Description
10034534	28	Rivet
01549211	20	Rivet
10016411	1 (tube per bus)	Adhesive, Magnobond
00803213	3	Capscrew, Hex HD, 3/8-16X 1 1/4" GR 8
02171809	3	Nut, 3/8-16, locking
02028546	3	Flatwasher

RECALL CAMPAIGN R15YC