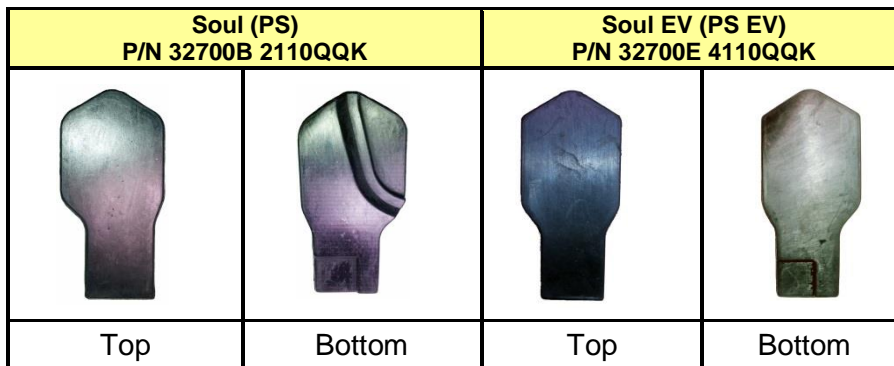
	<b>GROUP</b> <b>Safety Recall Campaign</b>	<b>MODEL</b> <b>2014~2015MY</b> <b>Soul (PS)</b> <b>2015MY</b> <b>Soul (PS EV)</b>
	<b>NUMBER</b> <b>SC 116</b>	<b>DATE</b> <b>March 2015</b>
<b>VOLUNTARY SAFETY RECALL CAMPAIGN</b>		
<b>SUBJECT: SOUL ACCELERATOR PEDAL (SC 116)</b>		

This bulletin provides the procedure to install a rubber pad under the accelerator pedal of some Soul (PS) and Soul EV (PS EV) vehicles, produced from Job #1 through January 8, 2015. The accelerator pedal may fracture if the driver applies unanticipated excessive force on the pedal. Field information and testing indicates this can only occur when the vehicle is stationary. If the driver continues to operate the vehicle, this could impair acceleration on the road and increase the risk of a crash. To correct this concern, install the reinforcement rubber pad under the pedal by following the procedure outlined in this bulletin. Before conducting the procedure, verify the vehicle is included in the list of affected VINs.



**\* NOTICE**

There is no charge to the vehicle owner for this repair. Under applicable law, you may not sell or otherwise deliver any affected vehicle until it has been repaired pursuant to the procedures set forth in this bulletin.

**\* NOTICE**

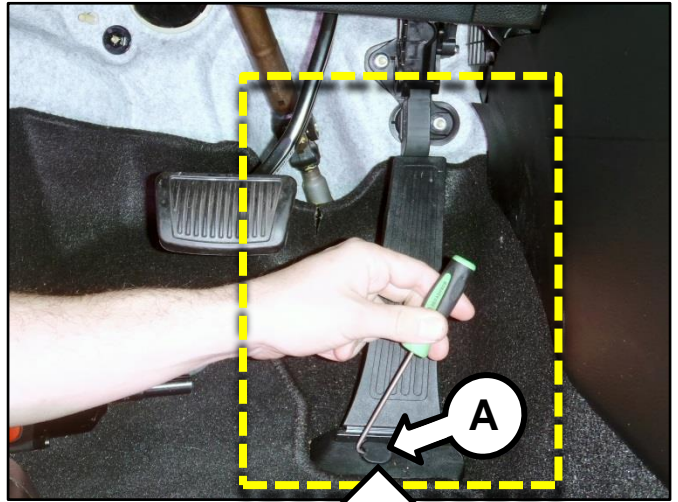
To improve customer satisfaction, always remember to refer to WebDCS Warranty Coverage (validation) Inquiry Screen (Service> Warranty Coverage> Warranty Coverage Inquiry) for a list of any additional campaigns or service actions that may need to be performed on the vehicle before returning it to the customer.

File Under: <Voluntary Safety Recall Campaign>

- Circulate To:   
 General Manager   
 Service Manager   
 Parts Manager  
 Service Advisor(s)   
 Technician(s)   
 Body Shop Manager   
 Fleet Repair

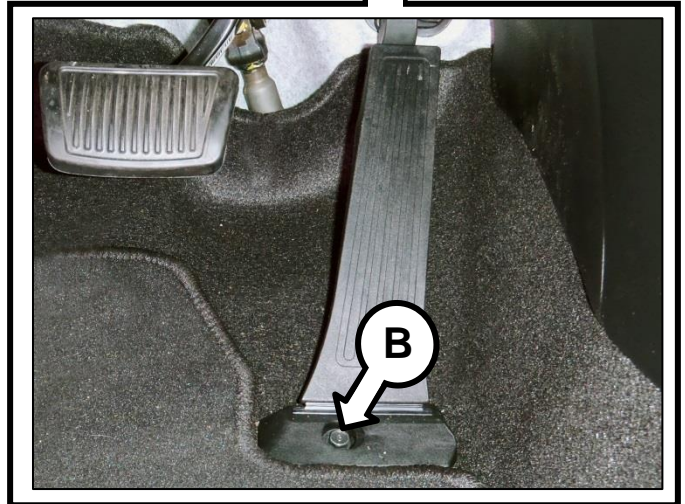
**Service Procedure:**

1. Use a prying tool to remove the blanking cover (A) from the accelerator pedal assembly.



2. Remove one (1) bolt (B) securing the accelerator pedal to the floor pan.

**Tightening torque:**  
**10.1 ~ 12.3 lb-ft (13.7 ~ 16.7 Nm)**



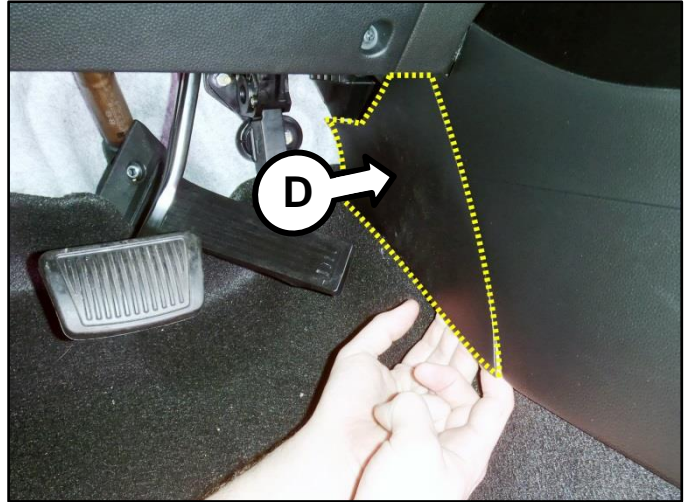
3. Gently rotate the accelerator pedal (C) to the left side, as shown.



SUBJECT:

## SOUL ACCELERATOR PEDAL (SC 116)

4. Remove the side cover (D) from the center console assembly.



5. Remove the carpet (E) from the area under the pedals, as shown.

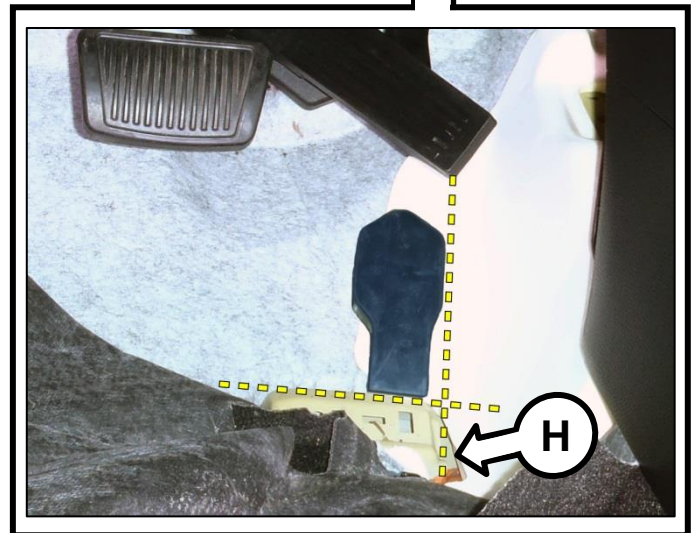
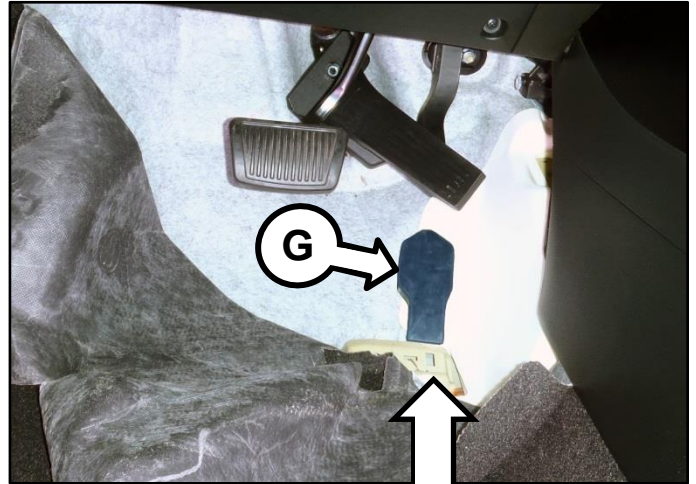


6. Locate the accelerator pedal mounting bracket (F) on the floor pan.

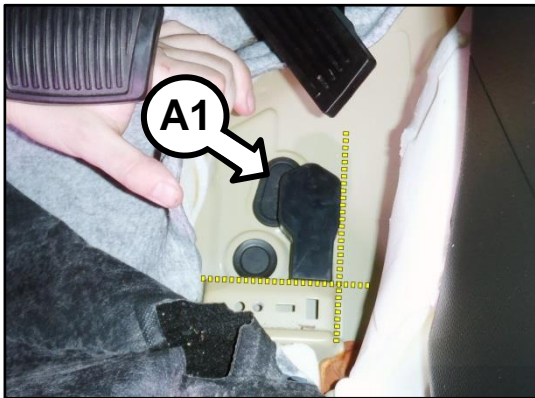




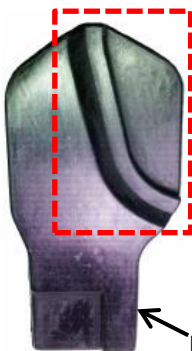
- 7. Align the rubber pad (G) with the right edge of the pedal mounting bracket (H), as shown.



**\* NOTICE**



On Soul (PS) vehicles, the rubber pad (P/N 32700B 2110QQK) must align with the side of the pedal mounting bracket, as well as with the raised contour of the floor pan around the rubber plug (A1).



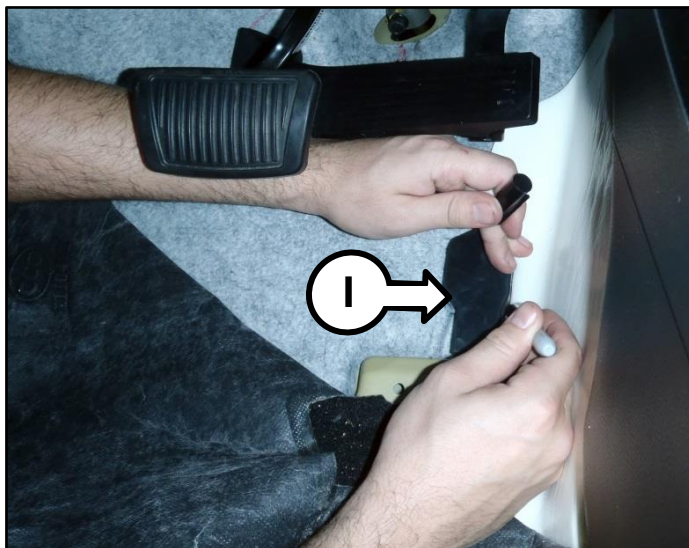
The cutout in the rubber pad will match the raised contour of the floor pan around the rubber plug (A1).

P/N 32700B 2110QQK

SUBJECT:

## SOUL ACCELERATOR PEDAL (SC 116)

8. While holding the rubber pad (I) in place, use a permanent marker to transfer the shape of the rubber pad onto the sound deadening material, as shown.



9. Use a sharp blade to cut the sound deadening material around the outline of the rubber pad (J), as shown.

**\* NOTICE**

Make sure to cut the outline as precisely as possible to ensure the rubber pad fits tightly in place.

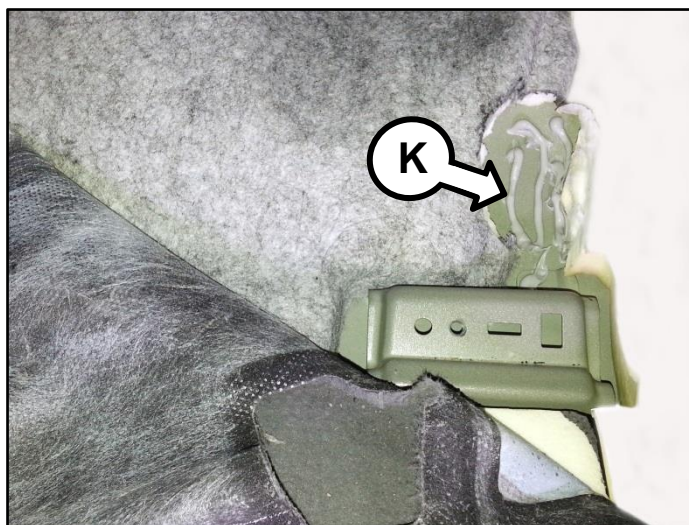


10. Apply several beads of Kia RTV Sealant (K), or equivalent, to the floor pan, as shown. **Note: One tube of RTV sealant should cover approximately ten (10) vehicles.**

**\* NOTICE**

Kia RTV Silicone Gasket Maker is recommended for this application.

P/N UM010 CH046



11. Install the rubber pad (L) into the cutout created in the sound deadening material, as shown.



12. Reinstall all removed components by reversing the order of removal. **Note: Avoid disturbing the placement of the rubber pad while reinstalling components.**
13. Start the vehicle and test the accelerator pedal for proper operation.

**SUBJECT:****SOUL ACCELERATOR PEDAL (SC 116)****AFFECTED VEHICLE PRODUCTION RANGE:**

Model	Production Date Range
Soul (PS)	Job #1 through January 8, 2015
Soul EV (PS EV)	

**PART INFORMATION:**

Part Name	Model	Part Number	Qty.	Figure
Rubber Pad	Soul (PS)	32700 B2110QQK	1	
Rubber Pad	Soul EV (PS EV)	32700 E4110QQK		

**WARRANTY INFORMATION:**

Claim Type	Causal P/N	Qty.	N Code	C Code	Repair Description	Labor Op Code	Op Time	Replacement P/N	Qty.
R	32700 B2110	0	N99	C99	(SC 116) Rubber Pad Attachment Soul (PS)	151002R0	0.2 M/H	32700 B2110QQK	1
					(SC 116) Rubber Pad Attachment Soul EV (PS EV)	151002R1		32700 E4110QQK	

Note: Use Sublet Code X1 for reimbursement of RTV sealant (\$0.66 maximum)

**\* NOTICE**

To improve customer satisfaction, always remember to refer to WebDCS Warranty Coverage (validation) Inquiry Screen (Service> Warranty Coverage> Warranty Coverage Inquiry) for a list of any additional campaigns or service actions that may need to be performed on the vehicle before returning it to the customer.