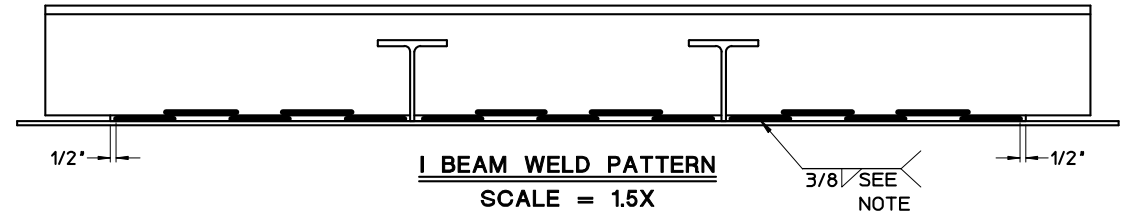
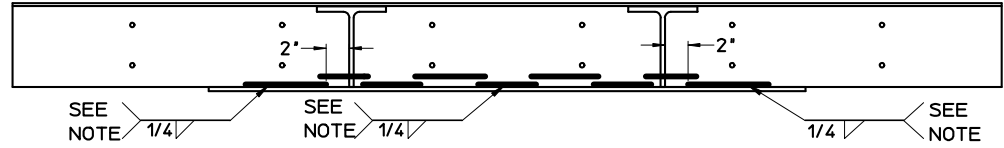


**KING PIN WELD DETAIL**  
SCALE = 2X



**I BEAM WELD PATTERN**  
SCALE = 1.5X



**FRONT RAIL WELD PATTERN**  
SCALE = 1.5X

WELD REPAIR INSTRUCTIONS

- GRIND/REMOVE ANY DAMAGED WELDS
- CLEAN WELD AREA & CLAMP JOINTS TIGHT
- APPLY NEW WELDS ACCORDING TO THIS DRAWING
- MUST USE 5556 OR 5356 1/16" DIA. WELDING WIRE.
- BE SURE TO FILL BETWEEN EXISTING WELDS TO ACHIEVE 100% COVERAGE.

**NOTE: STITCH WELD FIRST (MIN 5" WELDS) THEN FILL BETWEEN STITCHES TYP.**

BY	DATE	DESCRIPTION	C.O.NO.

WILSON TRAILER CO. SIOUX CITY, IOWA										
DESCRIPTION										
AL . KINGPIN WELD REPAIR INSTRUCTIONS										
DRAWING BY <b>PARKS</b>	DATE <b>06/08/15</b>	UOM E	UOM A	UOM U	UOM C	UOM B	UOM H	UOM S	UOM R	ASSEMBLY
WEIGHT	SCALE <b>1/16</b>	MODEL <b>DWH</b>		NEXT ASSEMBLY		PART NUMBER <b>GBB02968PX</b>				
REFERENCE										