

SAFETY RECALL CAMPAIGN

TITLE: Hood Latch Replacement - North America

RECALL REFERENCE 010

DOCUMENT NUMBER: 12 A 006

AFFECTED VEHICLES: Certain McLaren P1™ vehicles

SITUATION: Due to a tolerance build-up of the internal components within the McLaren P1™ hood latch, there is a chance that when the secondary latch becomes disengaged (by pressing the button found in the hood) and is then re-engaged, the solenoid plunger in the secondary latch may miss the latch hole, causing the secondary latch to remain disengaged which would create a noncompliance with Federal Motor Vehicle Safety Standard No. 113.

If this occurs, the secondary latch will not function properly and may not retain the hood and the hood may open whilst the vehicle is moving, which could impair driver visibility and increase the risk of a vehicle crash.

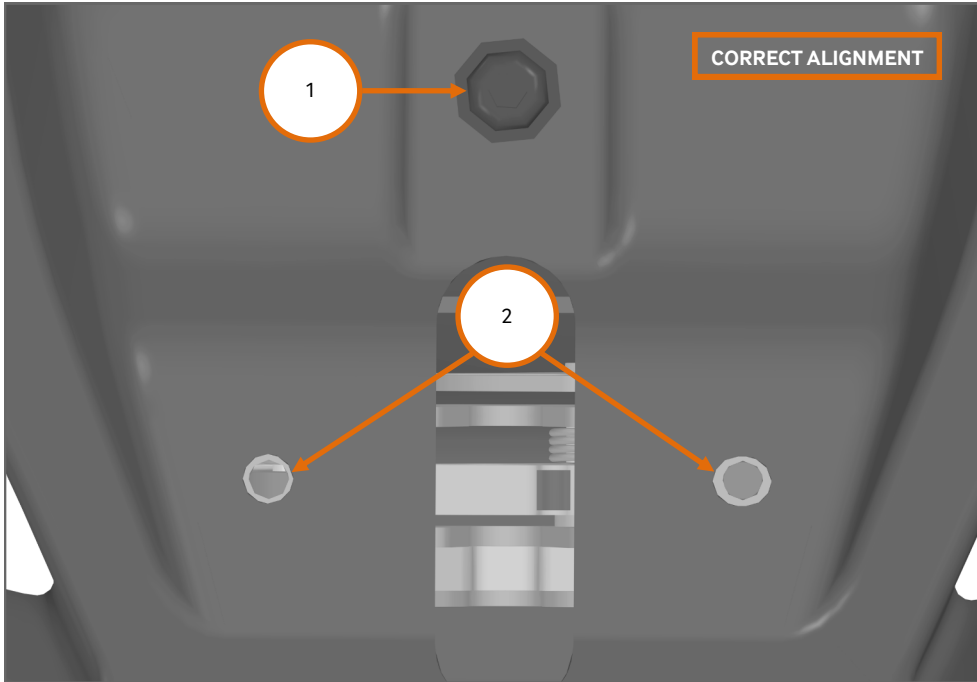
The parts needed to implement the remedy are currently available.

It is a violation of Federal Law for a retailer to deliver a new motor vehicle covered by this notification under a sale or lease until the defect is remedied.

PROCEDURE: Please follow the instructions outlined in this document to replace the hood latch.

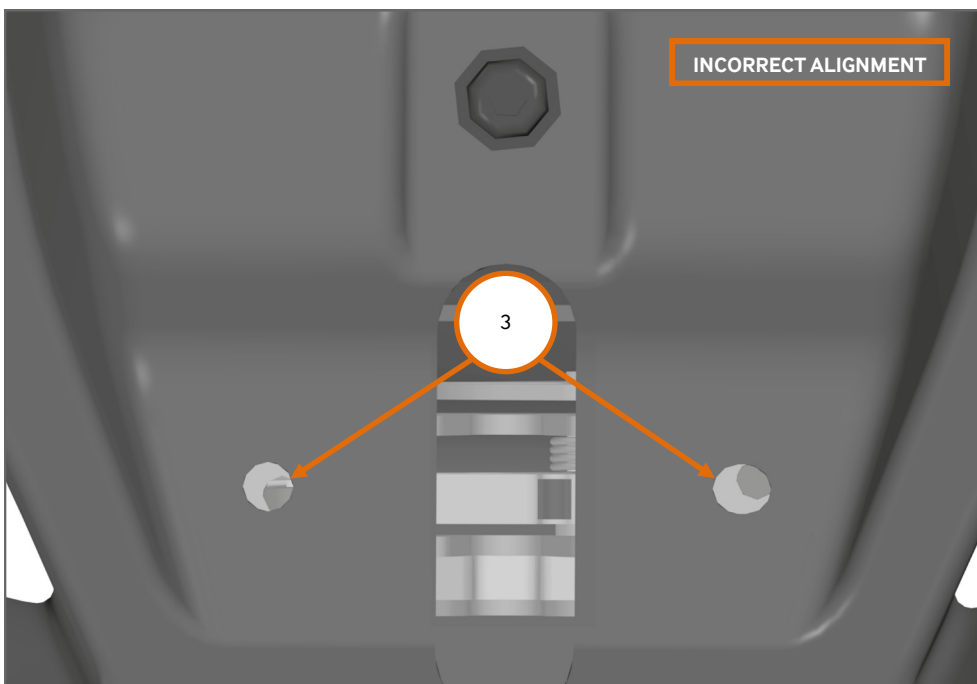
Instructions:

1. Please refer to BA-RM-02A052-03-001 Remove/install latch - Luggage compartment lid, to remove the hood latch.
2. Check for correct alignment of the new hood latch by fitting the top fixing bolt (1) and checking if the lower fixing points (2) of the latch are fully aligned with the holes in the front clam.
3. If the lower fixing holes (2) of the latch fully align with the clam fixing holes then proceed and install the new hood latch. Please refer to Step 8.



4. If the fixing holes of the latch are **not** fully aligned (3) with the clam fixing holes please refer to Step 5.

Care Point: Do not attempt to install the remaining two fixing bolts if the lower fixing holes are not aligned.

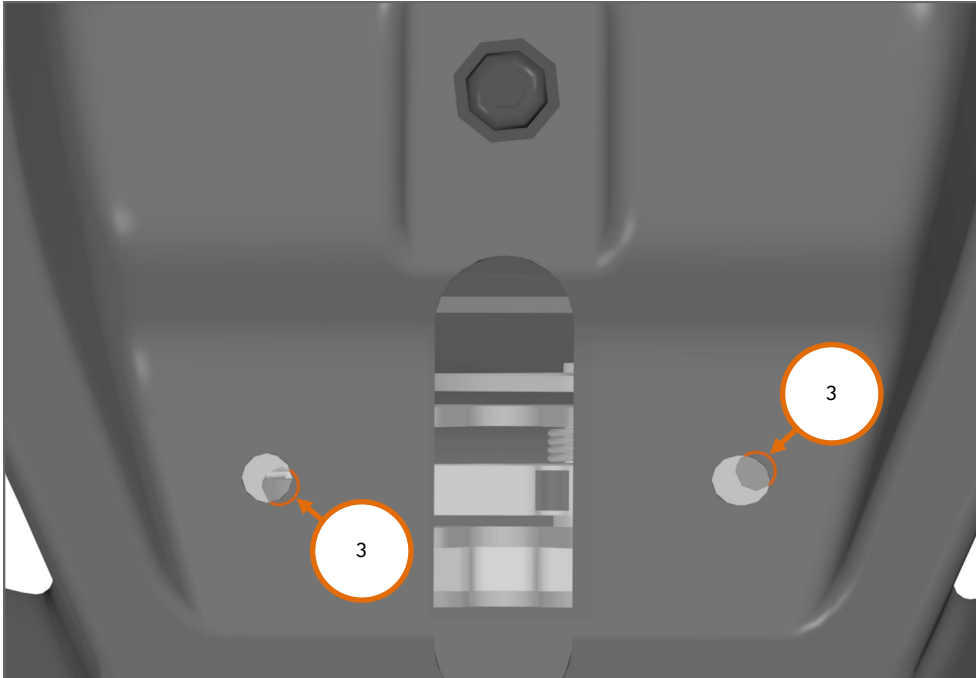


Care Point: Do not remove more than 3mm of material from any of the clam fixing holes.

Care Point: Remove an equal amount of material from each clam fixing hole in order to keep the latch centralised.

Care Point: Do not remove any material from the threaded latch fixing holes.

5. Mark up with a marker pen the area around the lower clam fixing holes where carbon material needs to be removed (3) to ensure that the fixing holes of the latch and the fixing holes of the clam are fully aligned.



6. Remove the new luggage compartment latch to prevent damage while reworking the fixing holes of the clam.

 **WARNING!**

Risk of explosion caused by grinding dust or carbon fibres.

Enriched sanding/grinding dust can lead to dust explosions in the presence of ignition sources.

Sanding /grinding dust can be electrostatically charged when evacuated with extraction systems and poses an ignition hazard.

Always wear fine dust filter masks, safety glasses and protective gloves when handling carbon reinforced plastic materials.

- The extraction systems must be grounded to prevent a dust explosion.
- Avoid stirring up dust, immediately extract all dust caused by sanding/grinding with approved vacuum cleaners when processing carbon reinforced plastic materials.
- Use only tools that have connections for extractor units.
- Wipe away remaining dust residues with a moist, lint-free rag.

Care Point: Use a vacuum cleaner to remove fillings whilst reworking.

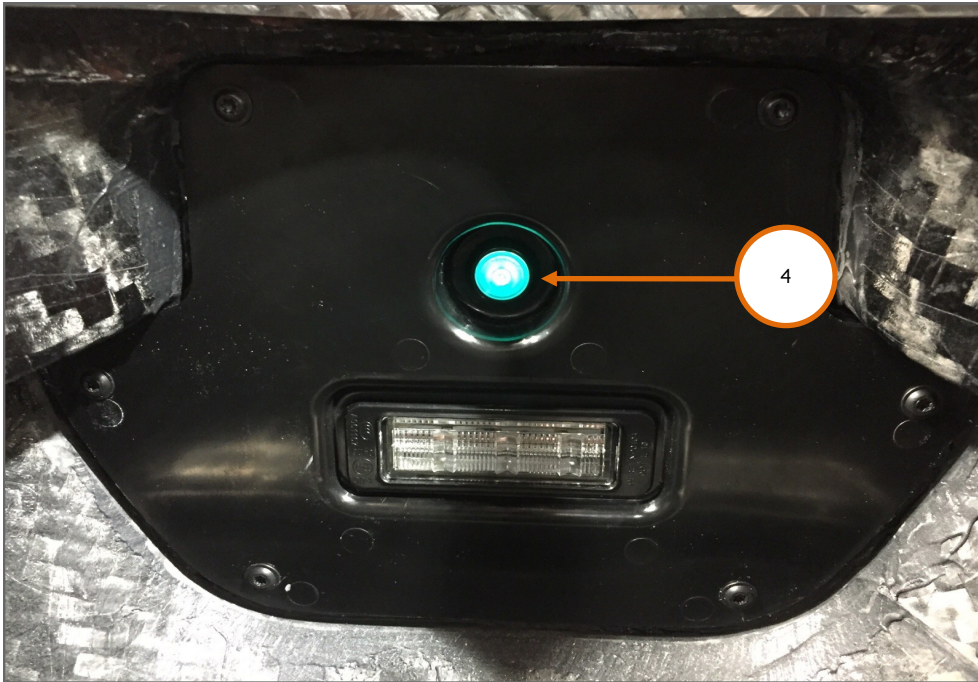
7. Using a needle file, remove material in the areas marked with paint at step 5.

8. Install the hood latch (ensure new bolts are used).

Please refer to BA-RM-02A052-03-001 Remove/install latch - Luggage compartment lid.

9. Once the new latch is correctly fitted, carry out a function test as described in the next page.

10. Activate the hood latch using the emergency release button (Billy button) (4), located inside the luggage compartment.



11. Fully close the hood and wait for 30 seconds.

12. Release the hood with the electronic key or the internal release button located in the centre console.

Care Point: Do not operate the safety catch release button (5) located on the front of the vehicle.



13. Lift up the hood to ensure the secondary latch is engaged and is retaining the hood .
14. If the secondary latch has worked, fully open the hood and repeat steps 10 to 13.
15. If the second test is successful no further action is required.
16. If the secondary latch has **not** worked i.e. the hood is not retained, please submit a Technical Request.

Please contact your Regional Aftersales Manager should you have any questions relating to the information contained within this bulletin.

WARRANTY INFORMATION

DESCRIPTION	RESOLUTION CODE	TOTAL REPAIR TIME
Luggage compartment latch replacement	BBAF0302A11P9901	0.5 Hours

PARTS INFORMATION

DESCRIPTION	PART NUMBER	QUANTITY	ORDER PROCESS
Luggage compartment latch	11A1967CP	1	Unipart
Bolts M6x12	00RA403	3	Unipart