

**RECALL: This modification has top priority and must be performed immediately to ensure customer safety**

**Subject: Factory Direct Modification Campaign – Checking and Sealing Internal Over Flow Pipe Inserts on Fuel Tanks**

**Affected Model: 2014 KTM 1290 Super Duke R**

**Restrictions: Affected models are linked by VIN in KTM Dealer.Net  
(See NOTE listed below on page 4)**

### Initial Information:

- » KTM North America has determined that a defect which relates to motor vehicle safety exists with the 2014 KTM 1290 Super Duke R pertaining to the proper sealing of the threaded inserts that affix an internal fuel tank overflow pipe. To ensure the highest level of safety, performance, reliability and customer satisfaction, it is necessary to have the threaded inserts on the fuel tanks checked for any possible leaks.
- » The internal fuel tank overflow pipe may not have been coated properly during the production process which could result in a capillary effect that may cause fuel to leak from the threaded inserts. A fuel leak from the threaded inserts, in the presence of an ignition source, may increase the risk of a fire.
- » It has been determined that the cause of the defect is due to deviations in the manufacturing process to achieve proper coating of the internal overflow pipe. To remedy this defect, the supplier has changed the manufacturing process which eliminated the threaded inserts completely.
- » KTM North America is notifying all registered owners of the above affected motorcycle by mail. A copy of the customer letter is included in this bulletin. The customer should take the letter along with the affected motorcycle to an authorized KTM Dealer to have the fuel tank threaded inserts checked for leaks.

**ATTENTION DEALERS: This recall should only be performed by trained technicians with proper equipment. Dealers are not to send out parts to customers and should take every reasonable action to make sure the customer does not try to repair or perform the recall on their vehicle. Dealers are to properly record the repair of the recall and report and or return parts to KTM.**

#### COPYRIGHT NOTICE

The user acknowledges that all components of this technical information are KTM's and/or third parties' copyright protected property. Alteration, assignment, distribution and reproduction are forbidden.

#### LIMITATION OF LIABILITY

The information included in or available through this technical information may include inaccuracies or errors. In no event shall KTM and/or its suppliers be liable for any damages whatsoever, arising out of or in connection with the use of this technical information. Please always refer to the KTM owners and repair manuals for proper instructions or contact the KTM Dealer Technical Service Department.

**KTM NORTH AMERICA, INC.** » Technical Department © 2015 KTM North America, Inc. – All rights reserved

38429 Innovation Court // Murrieta, CA 92563 // T: 951-600-8007 // F: 951-600-8866  
1119 Milan Avenue // Amherst, OH 44001 // T: 440-985-3553 // F: 440-985-3060  
www.ktmusa.com



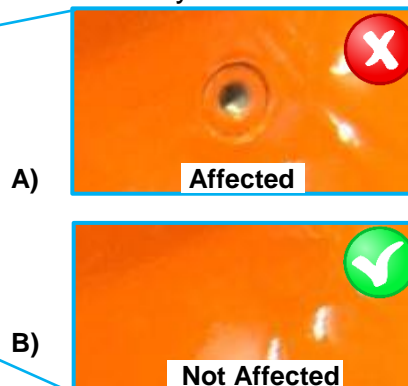
- » Dealers must perform the inspection and seal any and all threaded inserts on all affected motorcycles in their inventory prior to any customer delivery. Any affected 1290 Super Duke R's received directly from KTM North America require the above mentioned inspection prior to customer delivery. Affected units acquired through KTM dealer transfers or trades must be remedied and checked in KTM Dealer.net to ensure and document that the repair has been performed.
- » Motorcycles that are affected must not be operated until the threaded inserts have been inspected as described in this bulletin. It is a violation of KTM North Americas policy for an authorized KTM Dealer to deliver any affected units to customers until the procedure in this bulletin has been performed.
- » KTM North America must report to the federal government on a regular basis how many units have been repaired during this campaign. Be sure to submit your Warranty Request for Reimbursement on every unit repaired to ensure accurate compliance numbers.

## Procedure for Inspection / Repair:

- » Please reference the latest available repair manual for additional repair information and concerns, found in KTM Dealer.net download center // technical downloads.
- » First, remove the rider seat and inspect the fuel tank for a visible threaded insert near the rear left side, as shown in **Fig.1**. If the threaded insert is not visible no further repair steps are needed. If the threaded insert is visible then check for leaks. If no leak exists then continue with the repair by mounting the seals as described in the following steps. If fuel is leaking from the fuel tank, replacement of the fuel tank is mandatory.



**Fig. 1 –Threaded insert (above):**



**A) Has threaded insert = Affected**

**B) No threaded insert = Not Affected**

### COPYRIGHT NOTICE

The user acknowledges that all components of this technical information are KTM's and/or third parties' copyright protected property. Alteration, assignment, distribution and reproduction are forbidden.

### LIMITATION OF LIABILITY

The information included in or available through this technical information may include inaccuracies or errors. In no event shall KTM and/or its suppliers be liable for any damages whatsoever, arising out of or in connection with the use of this technical information. Please always refer to the KTM owners and repair manuals for proper instructions or contact the KTM Dealer Technical Service Department.

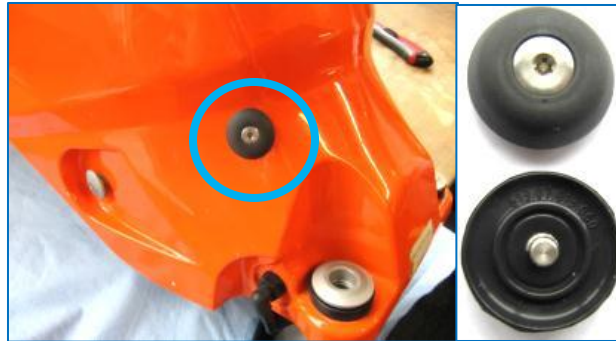
**KTM NORTH AMERICA, INC.** » Technical Department

© 2015 KTM North America, Inc. – All rights reserved

38429 Innovation Court // Murrieta, CA 92563 // T: 951-600-8007 // F: 951-600-8866  
 1119 Milan Avenue // Amherst, OH 44001 // T: 440-985-3553 // F: 440-985-3060  
 www.ktmusa.com

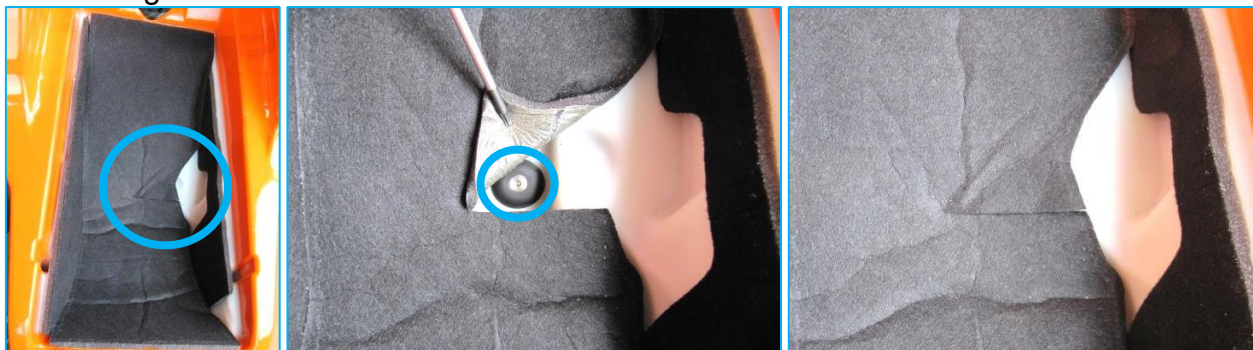


- » If the tank requires sealing or replacement drain the fuel from the fuel tank using a properly rated fuel pump and storage container. The XC\_1 tool can also be used to activate the vehicles fuel pump for draining by accessing the MCU ECU → Actuator Test → Fuel pump relay function test. If using XC\_1 please have a battery charger connected so not to discharge or damage the vehicles battery.
- » Install one seal to the open threaded insert at the rear left of the tank and apply Loctite® 243 to the threads then torque to 2Nm (17.7 lb.-in.), as shown in **Fig. 2**.



**Fig. 2 –Proper seal installation on rear left side of fuel tank**

- » The second seal is to be installed on the underside of the fuel tank. To access the threaded insert for seal installation remove the fuel tank and carefully make one cut to the self-adhering insulation mat on the underside to expose the insert, as shown in **Fig.3**. Install the seal as described in the previous step above. Press the insulation mat back into place, properly mount the fuel tank and fill with fuel checking for leaks and correct operation after assembling.



**Fig. 3 –Proper seal installation on underside of fuel tank**

## Parts Ordering Information:

- » If there are no leaks, please order **QTY- 2 of 613.07.013.060 SEAL** per vehicle.

If the fuel tank is leaking the replacement part numbers are based on the painted color.

QTY – 1 of 613.07.013.044.30A Black Fuel Tank

QTY – 1 of 613.07.013.044.EBA Orange Fuel Tank

### COPYRIGHT NOTICE

The user acknowledges that all components of this technical information are KTM's and/or third parties' copyright protected property. Alteration, assignment, distribution and reproduction are forbidden.

### LIMITATION OF LIABILITY

The information included in or available through this technical information may include inaccuracies or errors. In no event shall KTM and/or its suppliers be liable for any damages whatsoever, arising out of or in connection with the use of this technical information. Please always refer to the KTM owners and repair manuals for proper instructions or contact the KTM Dealer Technical Service Department.

**KTM NORTH AMERICA, INC.** » Technical Department

© 2015 KTM North America, Inc. – All rights reserved

38429 Innovation Court // Murrieta, CA 92563 // T: 951-600-8007 // F: 951-600-8866  
 1119 Milan Avenue // Amherst, OH 44001 // T: 440-985-3553 // F: 440-985-3060  
 www.ktmusa.com



## Warranty Input Information:

**NOTE: This Technical Bulletin only affects certain VIN numbers! Please check the VIN by performing a Motorcycle History search in KTM Dealer.net to determine if it's affected. If the motorcycle is affected you will see a link to the bulletin and its repair status in the history results. KTM North America will not warranty units whose VIN numbers are not listed as this bulletin does not apply to them. It is the responsibility of the dealer to determine if the unit requires this update by checking the vehicle history and understanding the instructions provided by this bulletin.**

- » Please note that when entering a warranty claim on an affected model, you will choose **TI Warranty Inc. Campaign Code** from the drop down list and then enter the vehicles **VIN** in the box to the right and click **NEXT**
- » You can now choose the appropriate TI Number from the drop down box based on repair.
- » The Warranty Claim is automatically entered for you, including labor. You must enter additional information in the required fields marked with an orange asterisk "\*" before submitting the claim to KTM. The flat rate for this repair varies depending on the action required. See codes below.

Warranty claim input information	
Warranty type:	TI – Warranty
Subassembly group:	07 – FUEL TANK
Failure code:	440 – Leaking
Part causing failure:	61307013060 – SEAL FOR FUEL TANK INSERT
Action code: Parts: Labor time:	The following labor and parts are included in the campaign code:
	<b>G.15.272.07 Inspection</b> , no visible threaded inserts No parts 10 minutes
	<b>G.15.273.07 Installation</b> of threaded insert seals on fuel tank #61307013060 – QTY 2 Seal for fuel tank insert 35 minutes
	<b>G.15.274.07 Replacement</b> Black fuel tank #6130701304430A Fuel tank Black 45 minutes
	<b>G.15.275.07 Replacement</b> Orange fuel tank #61307013044EBA Fuel tank Orange 45 minutes
Are stock items affected:	Yes, Return affected fuel tanks with an RMA Claim

### COPYRIGHT NOTICE

The user acknowledges that all components of this technical information are KTM's and/or third parties' copyright protected property. Alteration, assignment, distribution and reproduction are forbidden.

### LIMITATION OF LIABILITY

The information included in or available through this technical information may include inaccuracies or errors. In no event shall KTM and/or its suppliers be liable for any damages whatsoever, arising out of or in connection with the use of this technical information. Please always refer to the KTM owners and repair manuals for proper instructions or contact the KTM Dealer Technical Service Department.

**KTM NORTH AMERICA, INC.** » Technical Department © 2015 KTM North America, Inc. – All rights reserved

38429 Innovation Court // Murrieta, CA 92563 // T: 951-600-8007 // F: 951-600-8866  
1119 Milan Avenue // Amherst, OH 44001 // T: 440-985-3553 // F: 440-985-3060  
www.ktmusa.com

