



Forest River, Inc.

55470 County Road 1, P.O. Box 3030, Elkhart, Indiana 46515-3030 • 574-389-4600 • Fax 574-296-7558

IMPORTANT SAFETY NOTICE

Inspection and Installation of Vent

Date: March 3, 2015

Recall Number: TBA

Forest River Campaign Number: 400-03032015-0016

Dear Palomino SolAire Dealer,

Forest River – Palomino has decided that a safety defect pertaining to the furnace exhaust/fresh air intake which could lead to carbon-monoxide exposure and/or a fire due to the potential lack of the furnace ventilation to the exterior of the trailer. This involves all SolAire Trailers manufactured July, 2014 through August 2014 only. Our deepest apologies for this inconvenience are extended to you, our valued customers. The identified VIN numbers are 4X4TPA [REDACTED] through 4X4TPA [REDACTED]

ISSUE:

The trailer may have been manufactured without the exterior furnace vent, which allows the exhaust to be vented into the trailer posing a high risk of carbon-monoxide exposure and a potential for a fire to take place inside the trailer at the location of the furnace which may not be easily accessible during an emergency. The lack of a vent on the exterior of the trailer also violates the furnace manufactures installation instructions.

ACTION:

We have reinforced the need for our midline Quality Control check to ensure the Suburban Furnaces are installed properly, meet local building code, meet current NEC code and most importantly, the supplier's installation instructions. We also have instructed in writing and proper training, the Final Stage Appliance Tester to ensure they are checking for the furnace vents amongst other fuel burning appliances when doing the required RVIA mandatory appliance burn off.

In the unfortunate event that a VIN within the two hundred VIN search is identified as having the same problem, we will expand the Recall out another hundred VIN numbers beyond the newly subjected unit until resolved.

We will be using the NHTSA Reporting Portal, and Certified USPS Mail to our dealerships as well as the retail owners. Our internal deadline is March 27, 2015 for Retail and Dealership notification.

SERVICE PROCEDURE:

Dealership Service Department Service Procedures addressing Solaire Travel Trailer furnace Venting.

Turn off/unplug/disconnect all power from Shore and Battery, turn off the LP gas valve and allow ample time for the LP vapors to dissipate prior to continuing service.

First you must determine what series furnace is in the affected Solaire Travel Trailer.

If it uses a SF series furnace you will order kit # SFJ-01, included in the kit will be the jig and exterior venting fixture.

If it uses an NT series furnace you will order kit # NTJ-01, included in the kit will be the jig and exterior venting fixture.

Locate the furnace from the interior of the coach, it will be located behind an access panel similar to this. See Fig 1 and 2 below.

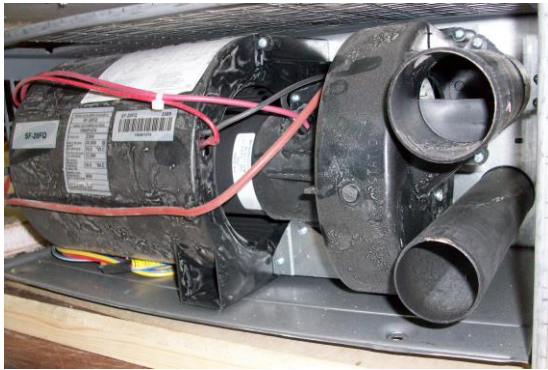


Fig 1



Fig 2

Now remove any Furnace ducting, 12v supply, and gas piping to allow access to the combustion vent tubing at the back of the furnace. See Fig 3 and 4 below.



SF series furnace

Fig 3



NT series Furnace

Fig 4

Now install the appropriate Jig onto the duct tubes at the rear of the furnace. See Fig 5 - 8



Fig 5

SF Series hole Jig
PN# SFJ-1



Fig 6

NT Series hole Jig
PN# NTJ-1

IMPORTANT SAFETY NOTICE



SF Series furnace with jig installed
Fig 7



NT Series furnace with jig installed
Fig 8

Use the supplied red grease pencil to color the screw threads at the center of the jig holes, (this will help to clearly mark the drill center location).

Now reposition the furnace as if it were installed, as you slide the furnace toward the outside wall be sure the jig makes enough contact with the outer wall to transfer the red mark.

The red marks are the pilot bit locations for the **2.5in hole saw**.

Once again remove the furnace and use the marks you just made with the Jig to drill the two required **2.5in holes**. See Fig 9 and 10

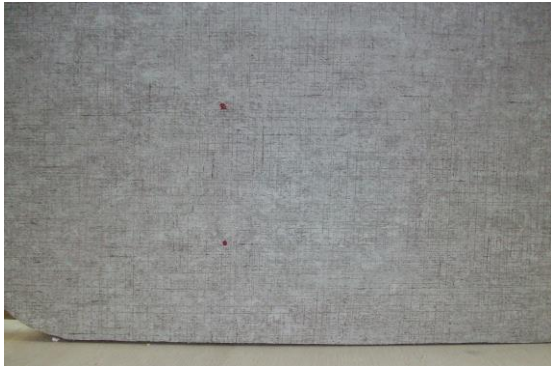


Fig 9



Fig 10

Now you are ready to properly reinstall the furnace following Suburban installation instructions.

**Do not attempt to use the Jig, PN# SFJ-01 or NTJ-01
As a furnace vent fixture, it can cause serious injury and/or death.**

Use only the approved vent supplied with the kit to vent the furnace. If you have any questions, please feel free to contact your Palomino Representative listed below.

IMPORTANT SAFETY NOTICE

Once the repair if needed, is complete the exterior will look similar to this picture of the exhaust vent installed properly. See Fig 11



Fig 11

Dealer Reference Codes:

- 70-025625 – Preform Inspection of Exterior, Unit Has Furnace Vent (Repair Code – 15 Min.)
 - Picture of vent and VIN required.
- 70-025650 – Preform Inspection, order kit, install Furnace Vent (Repair Code – 2 Hours)
 - Picture without a vent and VIN required.
 - Picture after vent installation complete.

CONTACT:

Kim Dobson – Warranty Manager 269-432-3246 or kdobson@forestriverinc.com
Brian Hayward – Parts Manager 269-432-9791 or bhayward@forestriverinc.com
Mike Kernagis – Service Manager 269-432-4438 or mkernagis@forestriverinc.com

Federal regulation requires that any lessor receiving this Technical Service Bulletin must forward a copy of this notice to the lessee within ten days. If you no longer own this vehicle, please inform us as soon as you can when you call to make contact.