



## **FINAL NOTICE**

**DATE: JULY 1, 2015**

**TO: BLUE BIRD OWNERS**

**SUBJECT: RECALL R14XR PARKING BRAKE PEDAL SEPARATION**

According to our records, we have not received confirmation that the above referenced recall dated January 30, 2015, has been completed. A copy of Recall R14XR is attached.

Your buses affected by Recall R14XR are identified by Blue Bird body number under Section 2 on the enclosed cover sheet.

If this is the first time you received notification of Recall R14XR, please read the enclosed notification carefully and follow the instructions provided.

If you have already had R14XR performed on your affected buses, please complete and mail the enclosed pink R14XR recall reply sheet to us in the enclosed postage paid pink reply envelope so we may update our recall records. Be sure the reply sheet is filled out properly.

Thank you for your prompt attention to this matter.

Regards,

*Lisa Hancock*

Lisa Hancock  
Corporate Recall Administrator  
(478) 822-2242



**R14XR**

**IMPORTANT SAFETY RECALL NOTICE**

**NHTSA RECALL NO. 14V-798 SCHOOL BUS  
NHTSA RECALL NO. 14V-797 NON-SCHOOL BUS**

January 30, 2015

Dear Blue Bird Owner:

This important safety recall notice applies to your buses identified by both Blue Bird body number and Vehicle Identification Number (VIN) on the attached pink reply sheet.

This notice is sent to you in accordance with the requirements of the National Traffic and Motor Vehicle Safety Act. Blue Bird has decided that a defect which relates to motor vehicle safety exists in certain 2015 and 2016 model year "All American Forward Engine" and "Vision" model school buses and non-school buses.

The parking brake pedal assembly on buses equipped with hydraulic brakes may not have been manufactured correctly and could separate allowing the pedal to bend. If the park brake pedal assembly should separate, the bus could roll unexpectedly when parked which could cause property damage, personal injury or death.

Blue Bird is conducting a recall to correct this defect. Buses potentially with this defect must be inspected immediately and corrected, if needed, according to the enclosed instructions for Recall R14XR. Parts and labor required to complete Recall R14XR, according to the attached instructions, will be provided at no cost to you.

Inspect park brake pedal assembly for suspect date code according to enclosed instructions for Recall R14XR. The date code on right side of parking brake pedal assembly must be inspected for date codes 1406 or 1407. If any other date codes are found, do not replace the pedal assembly. If date code is 1406 or 1407, the pedal assembly must be replaced.

If you no longer own the subject bus(es), please complete the appropriate section of the **yellow** parts request sheet and return to Blue Bird in the enclosed pink postage prepaid envelope.

**You should contact your Blue Bird dealer to have this recall performed. Or, if you prefer, you may perform this recall yourself or have a qualified repair facility convenient to you perform this recall. A qualified technician should perform this recall.**

**BLUE BIRD BODY COMPANY**  
P.O. Box 937 – 402 Blue Bird Blvd – Fort Valley, Georgia – (478) 825-2021

If you elect to perform this recall yourself, or have a qualified repair facility convenient to you perform this recall, you must complete and return enclosed Inspection Reply Sheet. Replacement park brake pedal(s) will be shipped to you at no charge according to a suspect date code you provide on the Inspection Reply Sheet.

Labor to inspect is 0.1 (6 minutes) per bus. Labor time allowed to remove the original park brake pedal assembly and to install a new park brake pedal assembly 0.42 hours (25 minutes) per bus.

If you perform Recall R14XR, or have a qualified repair facility convenient to you perform this recall, **reimbursement for labor** may be obtained by completing the *pink request for reimbursement sheet* provided and returning it to Blue Bird in the enclosed pink postage prepaid envelope.

If the repairs directed by this notification were performed on your bus prior to the receipt of this recall notification, complete and sign the recall reply sheet and attach a copy of the work order/invoice. Mail the documents in the **pink** self-addressed postage paid envelope included with the recall notification to Blue Bird for warranty consideration. Reimbursements will be made in accordance with the requirements of the National Highway Transportation Safety Act, Title 49 Code of Federal Regulations, Parts 573 and 577.

Federal law requires that any vehicle lessor receiving this recall notice must forward a copy of this notice to the lessee within ten days.

If Blue Bird Body Company should fail to or is unable to remedy this condition without charge to you, you may contact:

**ADMINISTRATOR  
NATIONAL HIGHWAY TRAFFIC SAFETY ADMINISTRATION  
1200 NEW JERSEY AVENUE, SE  
WASHINGTON, D.C. 20590**

Or, you may call The National Highway Traffic Safety Administration toll free at:

1-888-327-4236  
TTY 1-800-424-9153

Or, go to: [HTTP://WWW.SAFERCAR.GOV](http://WWW.SAFERCAR.GOV)

Questions regarding this recall campaign should be directed to me at (478) 822-2242 or [lisa.hancock@blue-bird.com](mailto:lisa.hancock@blue-bird.com).

Thank you,

*Lisa Hancock*

Lisa Hancock  
Corporate Recall Administrator  
**BLUE BIRD CORPORATION**



# Parking Brake Pedal Separation

# RECALL

**Models Affected:** Certain 2015 & 2016 All American Front Engine and Vision Buses  
Equipped with Hydraulic Brakes

## ISSUE

The parking brake pedal assembly on buses equipped with hydraulic brakes may not have been manufactured correctly by the supplier and could separate allowing the pedal to bend. If separation should occur, the bus parking brake may not engage properly.

## CORRECTIVE ACTION

Inspect pedal date code. If within defective date code range, remove and replace original parking brake pedal assembly with new replacement parking brake pedal assembly. Do not attempt to install, remove, disassemble or assemble a component until you have read and thoroughly understand the recommended procedures.

## PROCEDURE

**WARNING:** Always follow all Federal, State, Local and Shop safety standards and use proper safety equipment when performing these procedures. Thoroughly read and understand all instructions before performing this procedure.

Components with stripped threads or damaged parts should be replaced rather than repaired. Do not attempt repairs requiring machining or welding unless specifically stated or approved by the vehicle and component manufacturer. Always wear safety glasses.

### Instructions for inspecting park brake pedal assembly for date code.

1. Park bus on a level surface, apply parking brake, switch engine off, remove ignition key.
2. Chock wheels.
3. Locate manufacturing date code on right side of park brake pedal assembly. The date code is the series of numbers beginning with 14. See figure 1 below. Date codes found beginning with year and month of 1406 and 1407 must be replaced. *If any other date codes are found, do not replace pedal assembly.*
4. Once date code is located, write date code along with body number and date inspected on the Recall R14XR Inspection Reply Sheet included with your recall documents. If date code is within the defective date code range, provide your shipping address, contact name, and telephone number in the space provided at the bottom of the R14WR Inspection Reply Sheet and a new replacement brake pedal assembly will be shipped to you at no charge.

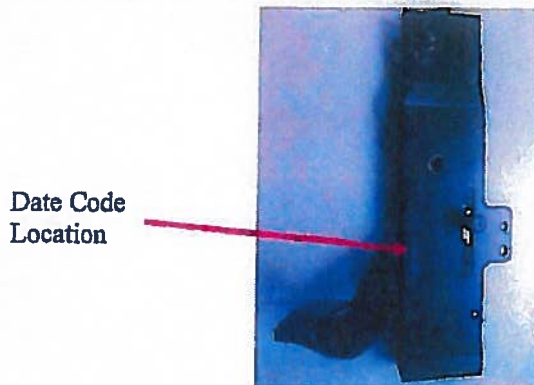


Fig. 1

RECALL CAMPAIGN R14XR



# Parking Brake Pedal Separation **RECALL**

## Instructions for replacing park brake pedal assembly.

If a replacement park brake pedal is needed, use the following instructions to install the new park brake pedal assembly.

**WARNING:** Always follow all Federal, State, Local and Shop safety standards and use proper safety equipment when performing these procedures. Thoroughly read and understand all instructions before performing this procedure.

Components with stripped threads or damaged parts should be replaced rather than repaired. Do not attempt repairs requiring machining or welding unless specifically stated or approved by the vehicle and component manufacturer. Always wear safety glasses.

1. Park bus on level surface, apply parking brake, switch engine off, remove ignition key.
2. Chock wheels then release parking brake.
3. **Warning: Park brake cable tension must be released.** Locate bellcrank at transmission. (Fig. 1) Using a pipe wrench adjusted to the bellcrank width in area shown in Fig 1, rotate bellcrank counter clockwise to remove cable tension and then remove clevis pin.
4. Disconnect parking brake release handle by removing the cotter pin and flat washer and set aside for use later. (Fig. 2) See step 6 on page 4 for cotter pin location.



Fig. 1

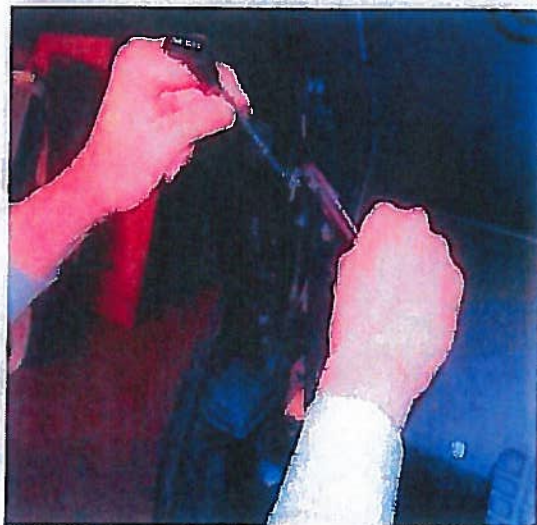


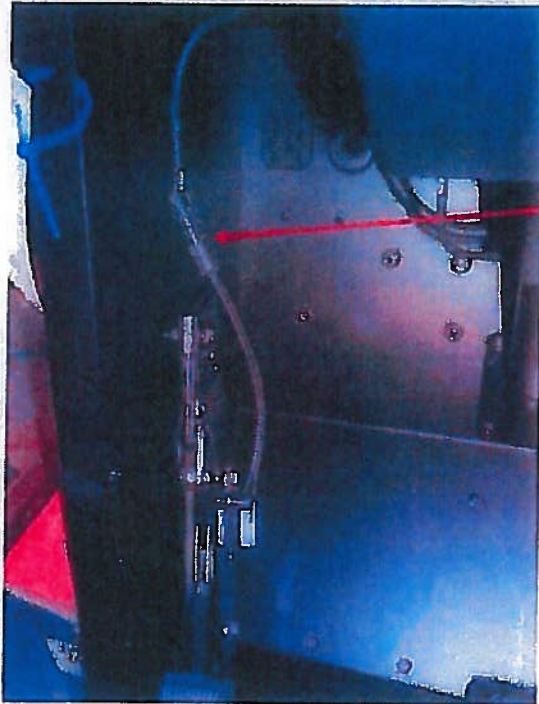
Fig. 2

RECALL CAMPAIGN R14XR



# Parking Brake Pedal Separation **RECALL**

5. Disconnect brake switch connector (Fig. 3) and solenoid connector, if present. (Fig.4)



Brake Switch Connector

Fig. 3



Solenoid connector  
(Park brake assembly  
with optional solenoid  
shown)

Fig. 4

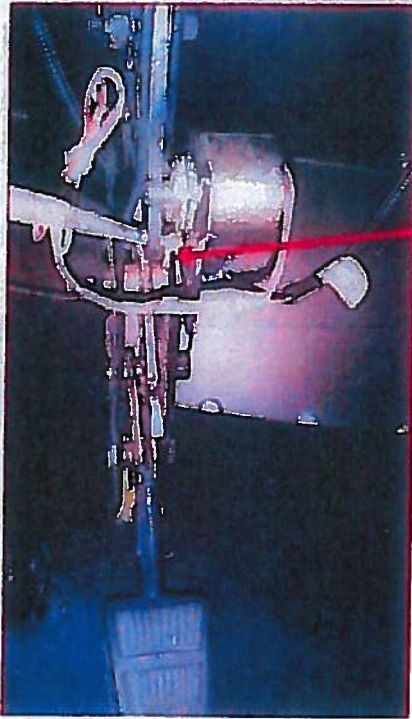
RECALL CAMPAIGN R14WR



# Parking Brake Pedal Separation **RECALL**

6. Remove cotter pin, then the flat washer from release handle mechanism. (See Fig. 5)

Note: Retain these parts for installation of new park brake lever assembly.



Remove cotter pin and flat washer

Fig. 5

7. Using a 1/2 inch socket and ratchet remove both mounting bolts (Fig. 6). Ensure spacer on lower mounting bolt between park brake assembly and panel and all washers are saved for reinstallation. (Fig. 7)

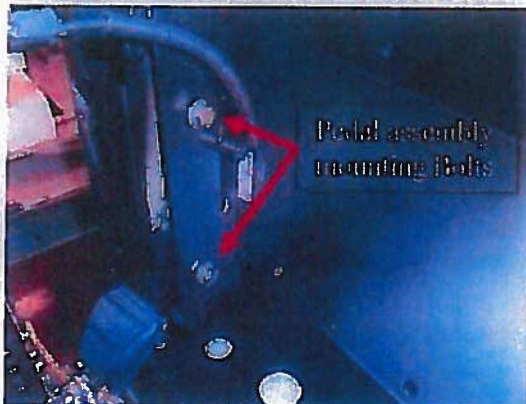


Fig. 6



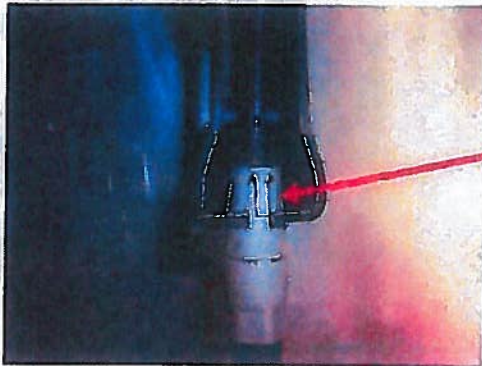
Fig. 7

R E C A L L C A M P A I G N R 1 4 X R



# Parking Brake Pedal Separation **RECALL**

8. Rotate cable in assembly so one of the clips is in line with opening. (Fig. 8)



Cable clip shown  
in line with opening

Fig. 8

9. A modified wrench (Fig. 9) will be provided with each order consisting of a 13mm wrench with a slot cut in the top side of the box end and machining the hex open to approximately .585 Dia. This will give enough clamp pressure to depress the locking tabs.

Modified wrench to aid in removing cable

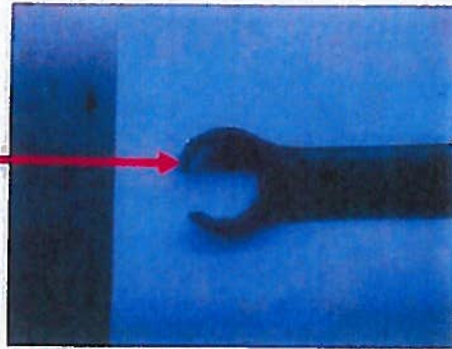
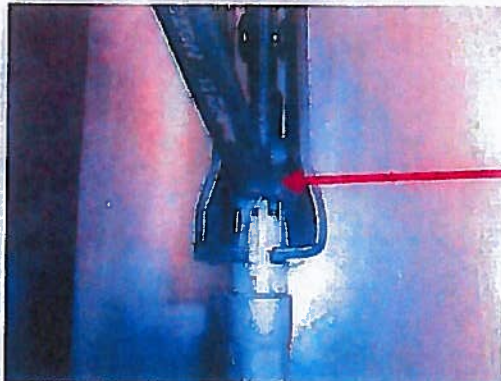


Fig. 9

10. Using the modified wrench, slide wrench down over cable connector. (Fig. 10)



Wrench shown over  
cable connector

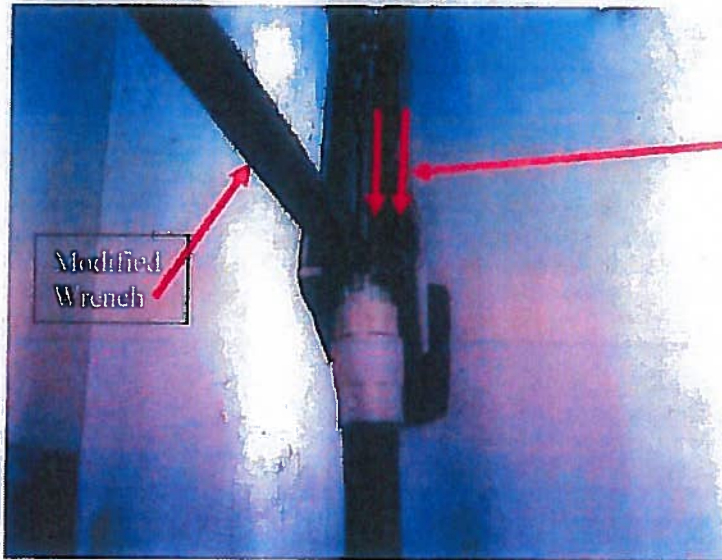
Fig. 10

R  
E  
C  
A  
L  
L  
C  
A  
M  
P  
A  
I  
G  
N  
R  
1  
4  
X  
R



# Parking Brake Pedal Separation **RECALL**

11. Slide modified wrench over connector (Fig. 11) to disengage the locking tabs.



Slide wrench in direction as shown by arrows

Fig. 11

12. Once wrench is properly located, pull cable straight out to remove from assembly. (Fig. 12)



Pull cable in direction of arrows

Fig. 12

RECALL CAMPAIGN R14XR



# Parking Brake Pedal Separation **RECALL**

13. Once cable is disengaged from assembly, position pedal in a "full up" position. (Fig. 13)



Pedal in "full up" position

Fig. 13

14. Lift cable end from the retainer and separate from park brake lever assembly. (Fig. 14)

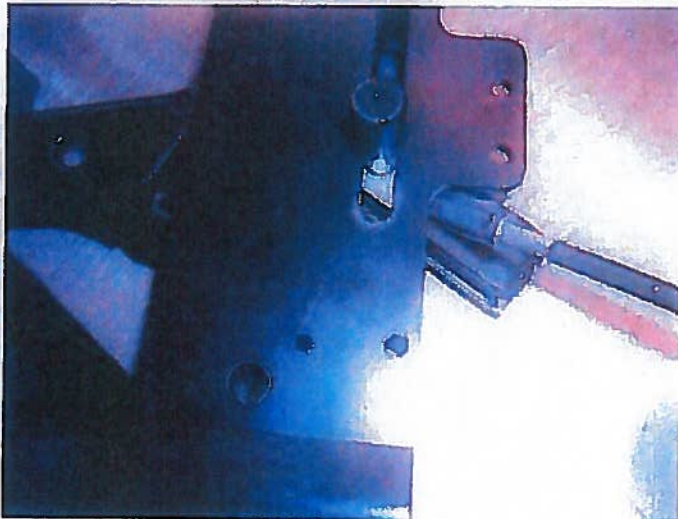


Fig. 14

RECALL CAMPAIGN R14XR



## Parking Brake Pedal Separation **RECALL**

15. Remove brake switch and solenoid (if equipped) from pedal assembly for reuse on new pedal assembly.
16. Installation is in reverse order. Ensure spacer (Fig. 15) retained in Step 6 is placed between box assembly and park brake to prevent damage to assembly when installing lower mounting bolt. Torque park brake assembly 5/16-18 mounting bolts to 150-200 in-lbs.

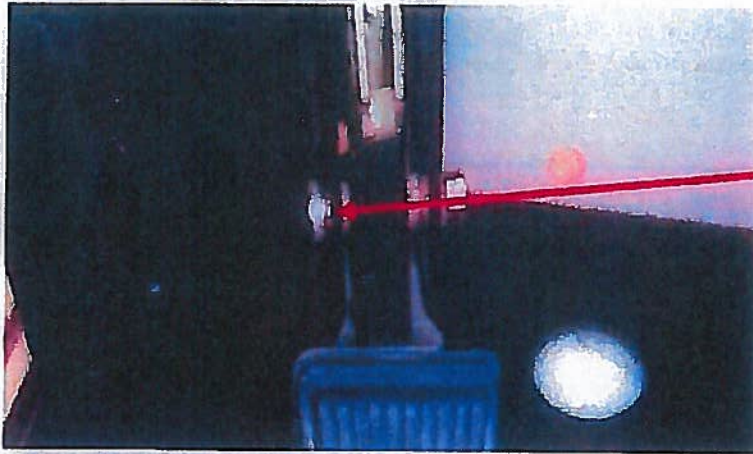


Fig 15

Spacer (retained in Step 7)

17. Be sure to reattach brake release lever.
18. Be sure to reattach cable at bellcrank on transmission.
19. See attached Page 9 for park brake adjustment instructions.
20. Prior to returning the vehicle to service, make certain all components and systems are restored to their proper operating condition.
21. Dispose of removed pedal assembly in accordance with all Federal, state and local regulations.
22. Remove chocks from wheels.
23. Return bus to service.

RECALL CAMPAIGN R14XR



# Parking Brake Pedal Separation **RECALL**

## PARTS LIST:

Part No	Qty	Description
10020420	1	Pedal Assy, Brake, Park, Reinforced, <i>Without Solenoid</i>
10020421	1	Pedal Assy, Brake, Park, Reinforced, <i>With Solenoid</i>
NPN	1 per order	Wrench, 13mm, modified

### Park brake pedal adjustment instructions

The parking brake should be adjusted so as to achieve following pounds force at the third "click" of the parking brake pedal.

120-130 pounds of force—Vision Cummins engine equipped

110-120 pounds force---Vision Ford engine equipped

130-150 pounds force---All American front engine

Always apply the brake fully, pressing it down to achieve at minimum, a third "click" of its detent setting.

Two cable adjustment locations are provided:

- On right side of transmission housing, the outer cable is clamped to a bracket, which has three sets of mounting holes. Any of the three sets of holes can be used to achieve the proper working range for the finer adjustments.
- The clevis at the transmission end of the cable is threaded onto the swaged fitting of the inner cable. The effective cable play can be adjusted by:
  1. Loosen the clevis lock nut.
  2. Disconnect the clevis by removing its cotter pin and clevis pin.
  3. Turn the clevis to adjust the cable length. Be sure to always leave at least a few threads of the cable end fitting showing inside the clevis.
  4. Reattach the clevis using a new cotter pin and tighten the lock nut.

RECALL CAMPAIGN R14XR



## Blue Bird Body Company Recall R14XR Inspection Reply Sheet

Inspect parking brake pedal according to page one of the instructions and record date code below. You must complete and return this inspection form as documentation the park brake pedal was inspected. Park brake pedals with date codes within the suspect date code range of 1406 or 1407 must be replaced. A replacement park brake pedal will be shipped to you at no charge. Be sure to provide a complete shipping address to receive replacement park brake pedals. Return R14XR Inspection Reply Sheet to Blue Bird in the pink reply envelope provided.

Blue Bird Body Number	Park Brake Pedal Date Code	Date Inspected	10020420 Without Solenoid	10020421 With Solenoid	Wrench 13mm, Modified (1) Per Order

Form Completed by: \_\_\_\_\_  
(Print Name)

School/Company: \_\_\_\_\_

Address: (No P. O. Box) \_\_\_\_\_

City: \_\_\_\_\_

State: \_\_\_\_\_

Zip: \_\_\_\_\_

Signature: \_\_\_\_\_

Date: \_\_\_\_\_