

TECHNICAL INSTRUCTIONS

FOR

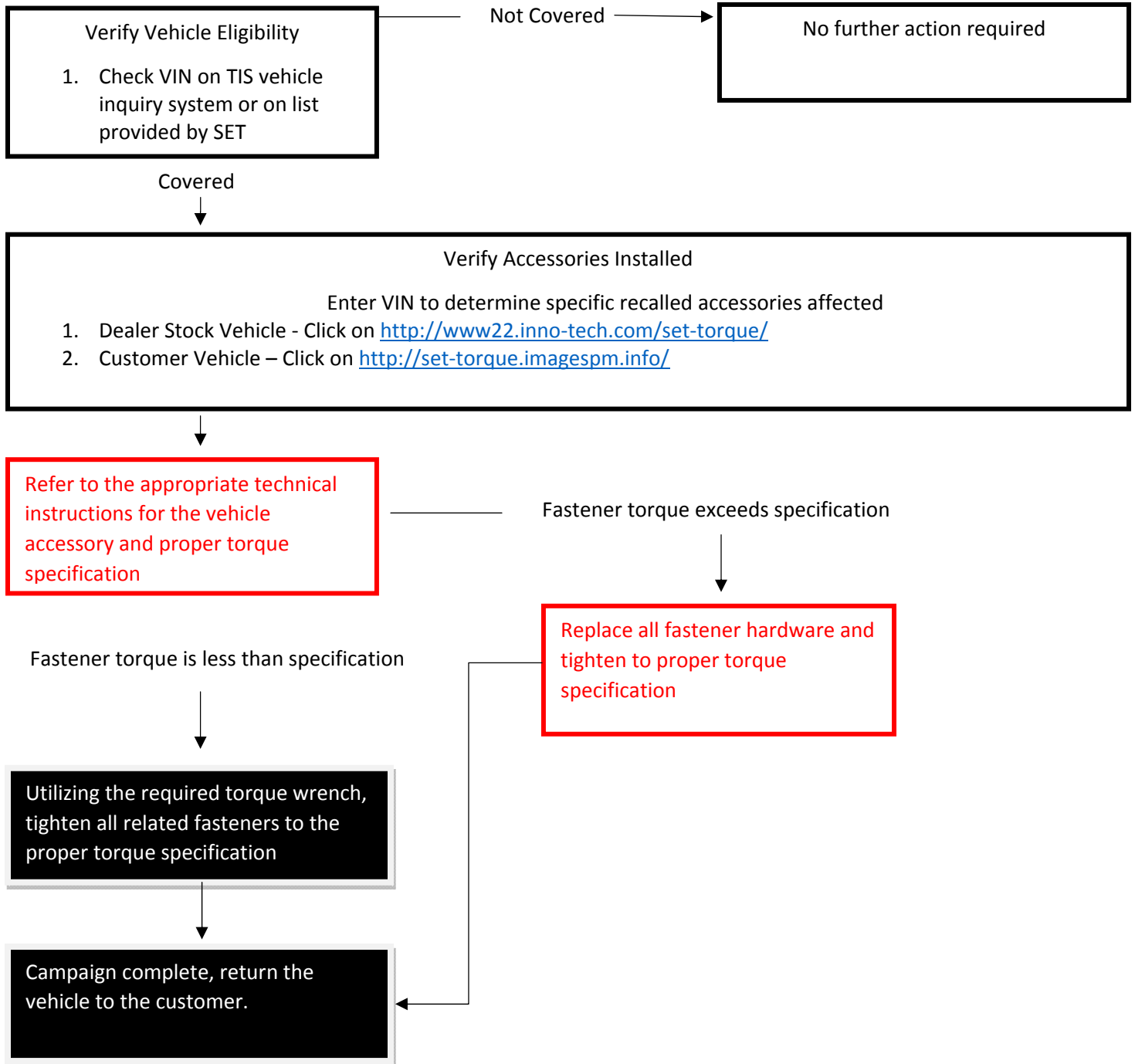
SAFETY RECALL SET – 14B

IMPROPER TORQUE ON ACCESSORIES INSTALLED BY (SET) SOUTHEAST TOYOTA

CERTAIN 2014 / 2015 4 RUNNER, FJ CRUISER, RAV 4, SCION FR-S, SCION XB, TACOMA

OPERATION FLOW CHART

The flow chart is for reference only. **DO NOT** use it in place of the full technical instructions. Follow **ALL** steps as outlined in the full technical instructions to confirm the campaign is completed correctly.



BACKGROUND

During the installation of certain accessories, the fasteners utilized to attach the accessory may have been under or over torqued. If the fasteners are not properly tightened to the specified torque, the fastener(s) could come loose, possibly allowing the accessory to fall off the vehicle, which could result in a crash or injury.

The TMS/SET accessories affected due to improper torquing procedure that resulted in this Safety Recall are:

<u>Series</u>	<u>Part #</u>	<u>PIO Code</u>	<u>Description</u>
4Runner	00016-89040	TRRB20	Step Boards
4Runner	00016-48935	CT90	Stainless Exhaust Tip
4Runner	PT278-89100	CB10	Crossbar
FJ Cruiser	00016-60060	DH60	Tow Hitch
FJ Cruiser	00016-60325	SK20	Skid Plate
FJ Cruiser	00016-60027	DE10	Dual Exhaust
FJ Cruiser	00016-60710	TB10	Step Tube
FJ Cruiser	PTR31-35070 old P/N PT910-60060		Muffler
FJ Cruiser	PT738-35090 RH PT 738-35091 LH		Rock Rail
FJ Cruiser	PT228-60060		Towing Hitch
FJ Cruiser	PT938-00140		TRD Skid plate
FRS	00016-79212	YE90	Sport Exhaust
FRS	PTR03-18150		TRD Exhaust
RAV4	00016-42020	TR10	Running Board
RAV4	00016-42027	DH60	Receiver Hitch
Tacoma	00016-35204	TR40	Stainless Steel Step Board
Tacoma	00016-35205	TR40	Stainless Steel Step Board
Tacoma	00016-35935	CT90	Exhaust Tip
Tacoma	00016-35870	DH60	Tow Hitch
Tacoma	00016-35017	TRPB20	Predator Board
Tacoma	00016-35305	SK20	Skid Plate
Tacoma	00016-35011	SKBF10	XSPX Skid Plate
Tacoma	00016-35019 5ft Short Bed 00016-35022 6ft Long Bed	TTTF10	Tri Fold Tonneau with LED
Tacoma	00016-35800	SB10	Bull Bar/Skid plate
Tacoma	PT392-3512B	JE10	bed Extender
Tacoma	00016-35031	SKNL10	Skid Plate
Tacoma	00016-35750 Long Bed 00016-35775 Short Bed	EX10	Sport Exhaust
Xb	00016-79801	YE30	Dual Exhaust

PREPARATION

A. TOOLS & EQUIPMENT

1. Torque wrench – (FT LBS or NM) - Click style (preferred) or Digital
2. Flashlight
3. Standard hand tools

B. PARTS – TBD

Required **ONLY IF** fastener has been torqued higher than specified in the installation instructions. Refer to the appropriate accessory technical instructions for individual fastener kit.

IDENTIFICATION OF AFFECTED VEHICLES

- Specific 2014 / 2015 4 RUNNER, FJ CRUISER, RAV 4, SCION FR-S, SCION XB, TACOMA

NOTE:

- Check TIS Vehicle Inquiry System to confirm if the VIN is involved in this Safety Recall.
- SET accessory warranty will not reimburse dealers for repairs conducted on vehicles that are not affected or were completed by another dealer.

VEHICLE INSPECTION PROCESS

During the accessory installation process, accessory attaching fasteners may not have been torqued to the necessary torque specification. The attaching fasteners could be either under or over torqued.

Refer to the installation instructions (attached) for all required torque specifications. Any attaching fastener that has a defined torque specification as outlined in the installation instructions (attached) must be verified for proper torque specification.

All torque specifications have been highlighted in purple in each of the attached installation instructions.

IMPORTANT

To validate the fastener torque specification, the following procedure **must** be performed. Using an appropriate (FT LBS or NM) torque wrench, set required torque specification on the torque wrench then apply it to the fastener(s) as follows:

1. If the fastener begins to turn and the torque wrench does not click immediately, the fastener is under-torqued. Continue to tighten fastener(s) until proper torque has been achieved.
2. If the fastener does not move and the torque wrench clicks immediately, the fastener is either correctly torqued or over-torqued and the following steps must be performed:
 - a) Set torque wrench for 1 (FT LBS or NM) over specification
 - b) If the fastener begins to turn and the torque wrench does not click immediately, the fastener is correctly torqued.
 - c) If the fastener does not move and the torque wrench clicks immediately, the fastener is over-torqued and needs to be replaced.
3. Once all fasteners are tightened to correct specification, the vehicle is repaired and can be returned to customer or dealer stock.

Note: Any attaching fastener (nut or bolt) that is involved in this Safety Recall that is over-torqued must be replaced as indicated in step 2 – C.

If you have any questions regarding this Safety Recall, please contact your SET Field Technical Specialist (FTS)

If you have a dealer stock vehicle that has been identified as over-torqued and are unable to obtain replacement components, please contact (FTAS) Field Technical Accessory Specialist Matt Hardee @ 904 378-4822 or Matthew.Hardee@settoyota.com. A copy of the buyers order will be required.