

S A F E T Y R E C A L L

SUBJECT: Red Brake Warning Lamp Illumination
DATE: 12/12/2014
BULLETIN NO.: RCB-006-14
CAMPAIGN NO.: A9940
AFFECTED MODELS: 2012- 2015MY COE trucks equipped with a J05 engine.

NOTE: Refer to the appropriate Vehicle Identification Number (VIN) list to determine vehicle eligibility.

OVERVIEW:

The red "BRAKE" warning lamp in the combination meter, which indicates a loss of brake fluid pressure, low brake fluid level or low vacuum, may not illuminate during the bulb check function when the ignition switch is turned to the "ON" position and the engine is not running. This does not comply with the requirements of Federal Motor Vehicle Safety Standard 105 S5.3.2. Updated ABS ECU software is available to address this issue.

SUBJECT VEHICLES:

2012 through 2015 MY COE (Cab Over Engine) Hino Trucks which were assembled at the Hamura, Japan equipped with a J05 engine.

BEFORE YOU BEGIN:

- Read and understand all instructions and procedures before you begin the work.
- Read and follow all **NOTICES** and **WARNINGS** set forth in this publication. These alerts help to avoid damage to components, serious personal injury, or both.
- Park the vehicle on a level and solid surface and apply the parking brake.
- Confirm the engine is stopped, the ignition switch is in the off (LOCK) position, and the key is removed.
- Wear safety glasses to prevent eye injuries.
- Place wheel chocks in front of and behind all wheels.
- A battery charger is installed on the vehicle to insure battery power does not go low during ABS ECU reprogramming.
- The laptop battery state is fully charged or a remote AC power supply is hooked to the laptop to insure the battery power does not go low during ABS ECU reprogramming.

S A F E T Y R E C A L L

Once Recall Is Completed
Complete a recall sticker and affix to the left door jam above the V.I.N. decal.



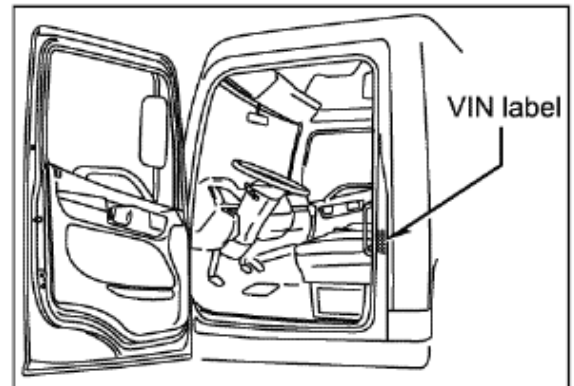
HINO  **TRUCKS**TM
A Toyota Group Company

Campaign No.: _____

Dealer code: _____

Repair date: ____/____/____
(MM / DD / YY)

DO NOT REMOVE



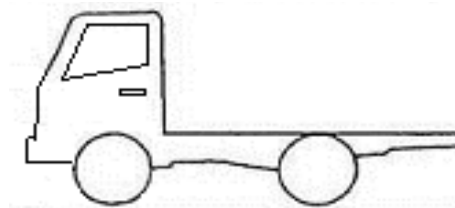
NOTE: Verify Application and note Kit Part Number from chart below

REQUIRED PARTS:

PART NUMBER	SOFTWARE NUMBER	DESCRIPTION	QUANTITY
445540-37182	F1526-37072	12-15MY Diesel	1
445540-37142	F1526-37083	12-15MY Hybrid	1

VEHICLE PREPARATION

1. Park the vehicle on level ground.



SAFETY RECALL

2. Apply the parking brake.



3. Confirm the engine is stopped, the ignition switch is in the off (LOCK) position, and the key is removed.



4. Chock all of the wheels to prevent the vehicle from moving.



SAFETY RECALL

5. To assemble the interface cable, perform the following steps.

- (1) Connect the DLC (Diagnostic Link Connector) Cable.
- (2) Connect the USB Cable to the Hino DST-I or Nexiq.
- (3) Connect the USB connector to the USB port on your laptop.



6. Connect the cable to the vehicle's DLC connector. This connector is located under the instrument panel on the driver's side.



NOTE: The DST-I or Nexiq are the recommended tools for this procedure. Only use the USB cable connection from the electronic interface to the computer – do NOT use the Bluetooth feature for programming.

S A F E T Y R E C A L L

7. Disable the computer features listed below:

- (1) Screen saver
- (2) Energy saving features
 - a. Monitor
 - b. Hard disks
 - c. System standby



NOTICE: Failure to disable these features may severely damage the vehicle's ABS system.

NOTE: The illustrations above depict what you will see on your computer screen with regard to the features which must be disabled. The location on the screen of the features to be disabled will vary, however, based upon the operating software. Consult your IT department as required.

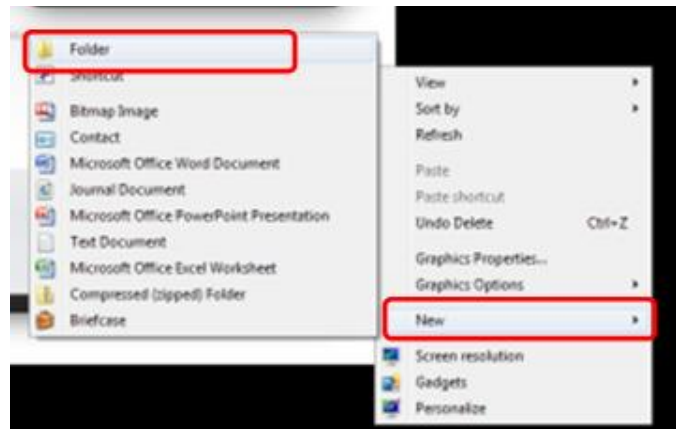
CALIBRATION UPDATE WIZARD (CUW) INSTALL PROCEDURE

Overview

A special reprogramming application (CUW) is required to reprogram the ABS module. It is necessary to download the reprogramming application, as well as the new software files which are required to update the ABS module to the latest calibration. The CUW reprogramming application needs to be installed on your computer. This may require IT support if access is restricted regarding installation of programs on your computer's hard drive.

CUW Installation

1. Right click on the desktop, select "New", "Folder".

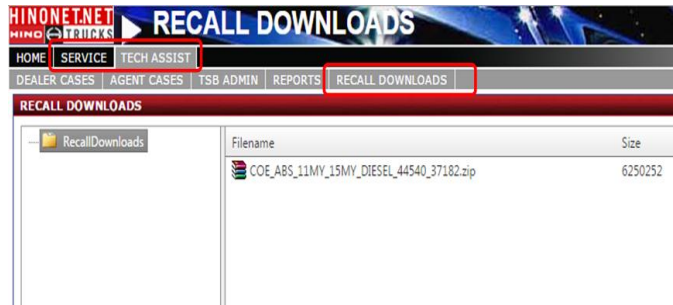


SAFETY RECALL

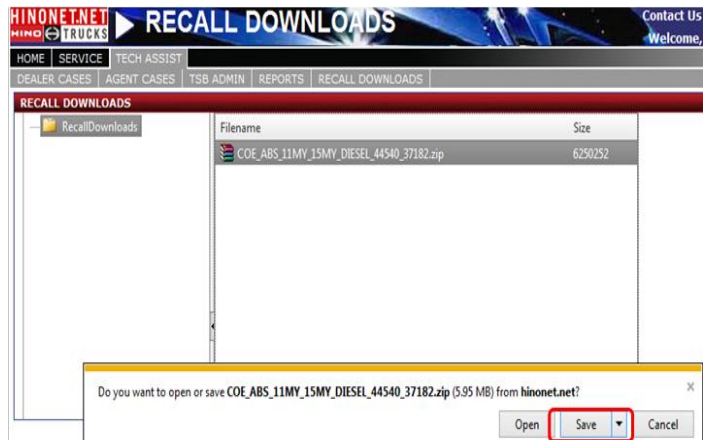
2. Name the new folder “Hino COE ABS”



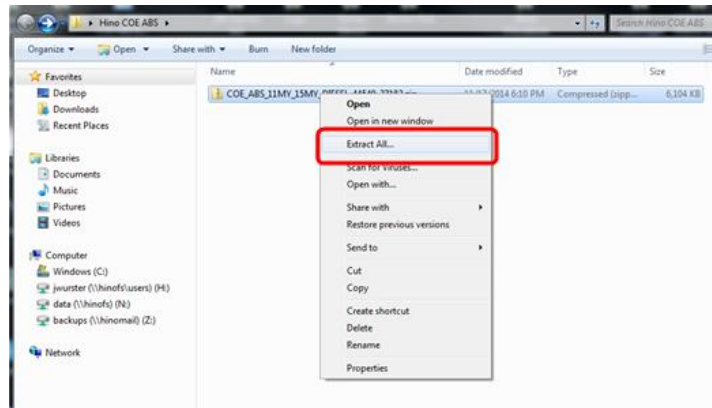
3. Log into Hinsonet, go to the “Service” tab, “TechAssist” then the “Recall Downloads” tab.



4. Double click the “COE_ABS_11MY_15MY_DIESEL_4454_0_37182.zip” Select “Save As” and save it to the “Hino COE ABS” folder on the desktop.

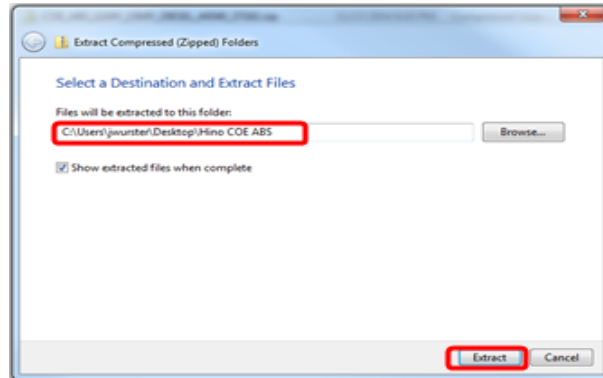


5. Right click on the “COE_ABS_11MY_15MY_DIESEL_4454_0_37182.zip” and select “Extract All”.

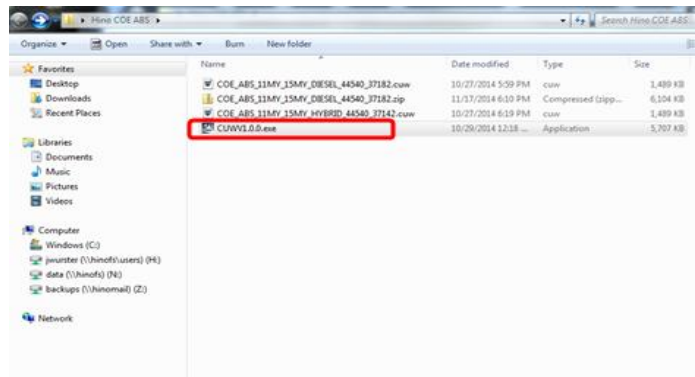


SAFETY RECALL

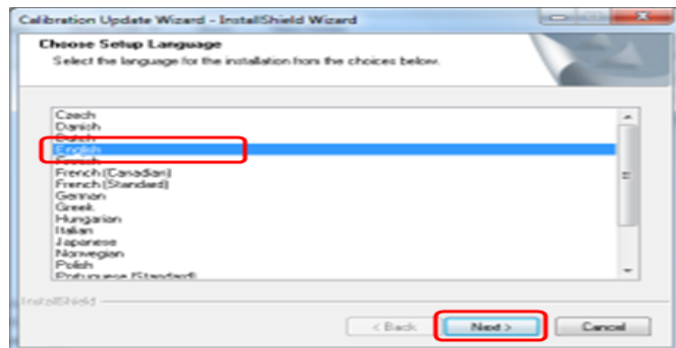
- Save the files in the “Hino COE ABS” folder.



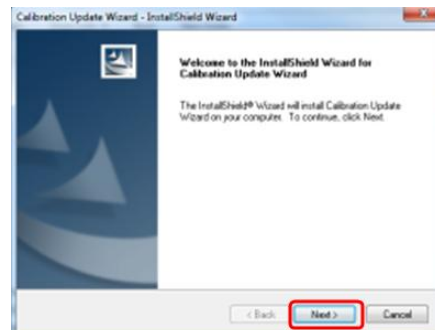
- Double click on the CUWV1.0.0.0.exe file to start the installation.



- Select “English” and “Next”.



- Select “Next” to start the installation.

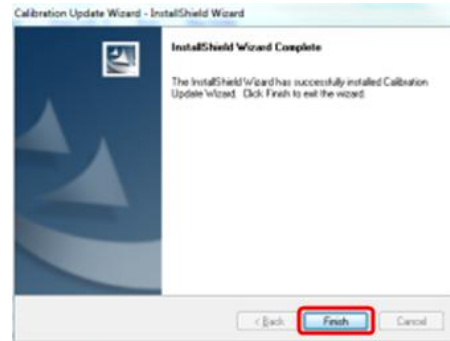


SAFETY RECALL

10. Select "Finish" once the installation completes.

Installation is complete and should not have to be run again.

Proceed to the Repair Procedure to Program the ABS module.



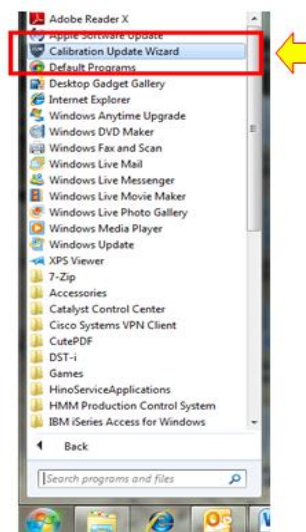
REPAIR PROCEDURE

1. Insert the ignition key into the ignition switch and turn the key to the "ON" position. Wait three seconds and confirm that ABS and "BRAKE" warning lamps are not on. If the "BRAKE" warning lamp is illuminated, start the engine and make sure the "BRAKE" warning lamp turns off.



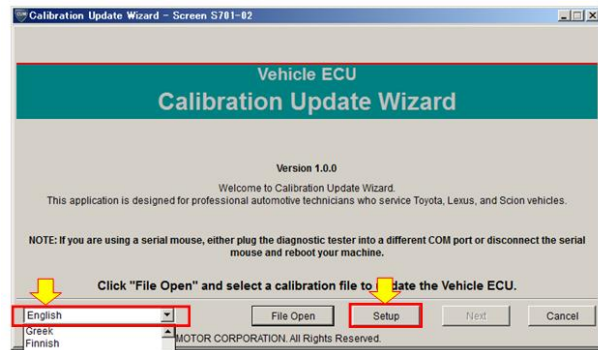
NOTE: The red brake lamp can be on with low vacuum. If the "BRAKE" warning lamp or ABS warning lamp does not turn off after running the engine for one minute or longer, perform troubleshooting according to the service manual.

2. From the Windows "Start" menu, select "All Programs." Click on the "Calibration Update Wizard" application.

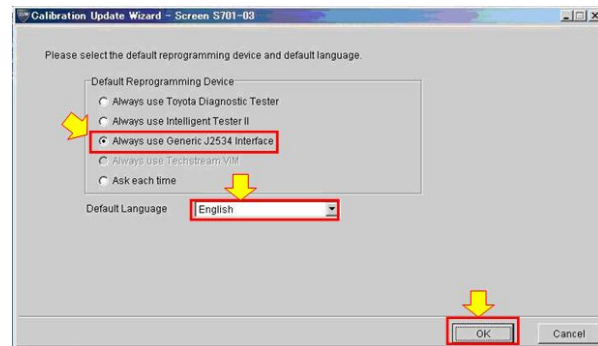


SAFETY RECALL

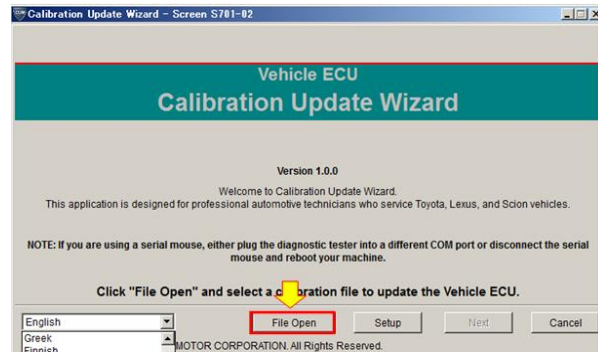
3. Select English and click "Setup."



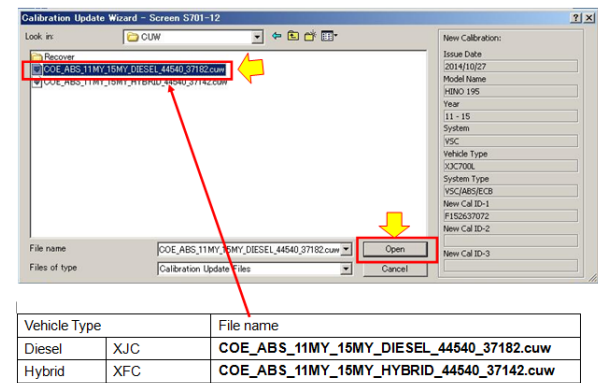
4. Select the "Generic J2534 Interface" and Default Language, and then click "OK."



5. Click "File Open."



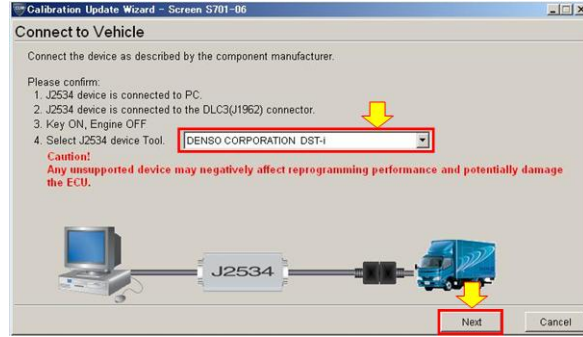
6. Locate the appropriate software file that was previously saved on your computer's hard drive. Select the Diesel or Hybrid "CUW" file and click "Open."



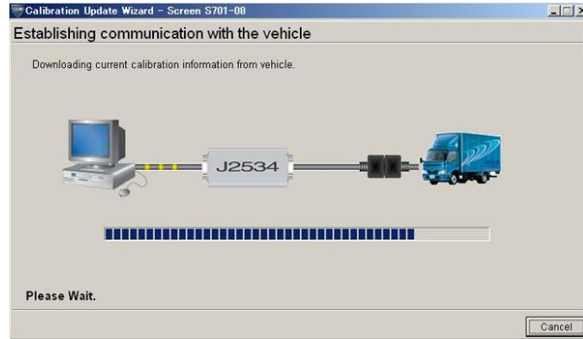
SAFETY RECALL

Vehicle Type		File Name
Diesel	XJC	COE_ABS_11MY_15MY_DIELSEL_44540_37182.cuw
Hybrid	XFC	COE_ABS_11MY_15MY_HYBRID_44540_37142.cuw

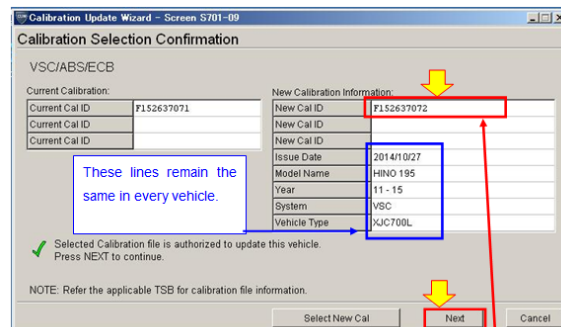
7. Select the correct interface DST-I or Nexiq for device Tool and click "Next."



8. Wait for the CUW to establish communication.



9. Make sure that the correct "New Cal ID" is selected, and then click "Next."



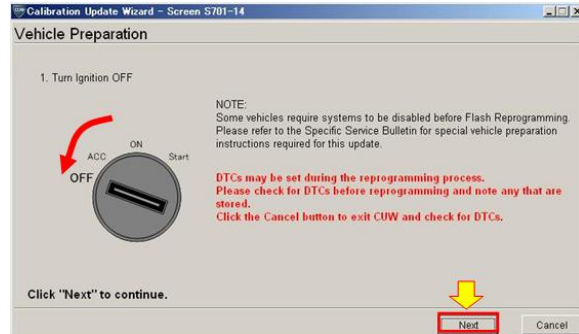
Vehicle Type		New Cal ID
Diesel	XJC	F152637072
Hybrid	XFC	F152637083

Vehicle Type		New Calibration ID
Diesel	XJC	F152637072
Hybrid	XFC	F152637083

NOTE: If "Next" does not appear, the file was not correctly selected during step 6. Click "Select New Cal" and start over from step 6.

S A F E T Y R E C A L L

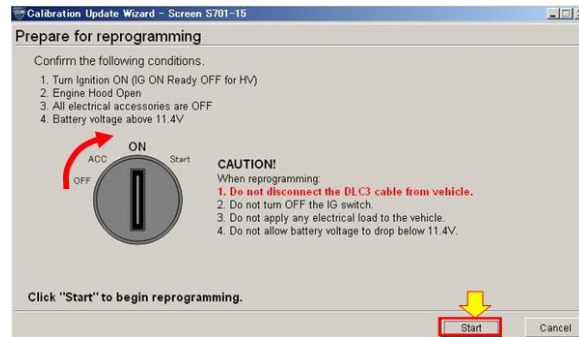
10. Turn the ignition switch to the “OFF” position and click "Next."



11. Wait for 10 seconds.



12. Turn the ignition switch to the “ON” position, and then click "Start."



NOTICE: Step 2 shown in the screen shot, above, shows “Engine Hood Open.” Please ignore this step as it does not apply.

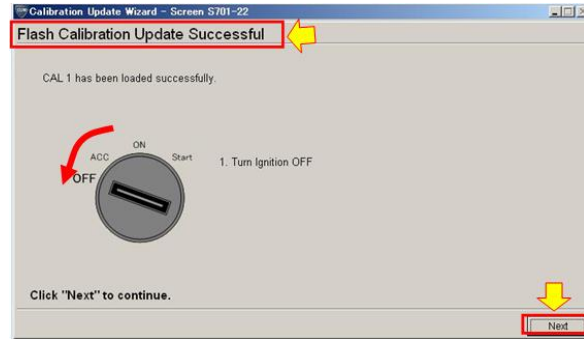
13. Wait for the reprogramming sequence to complete.



SAFETY RECALL

- 14.** Make sure the message “Flash Calibration Update Successful” is shown on the screen.

Turn the ignition switch to the “OFF” position and click “Next.”



- 15.** Wait for 10 seconds.



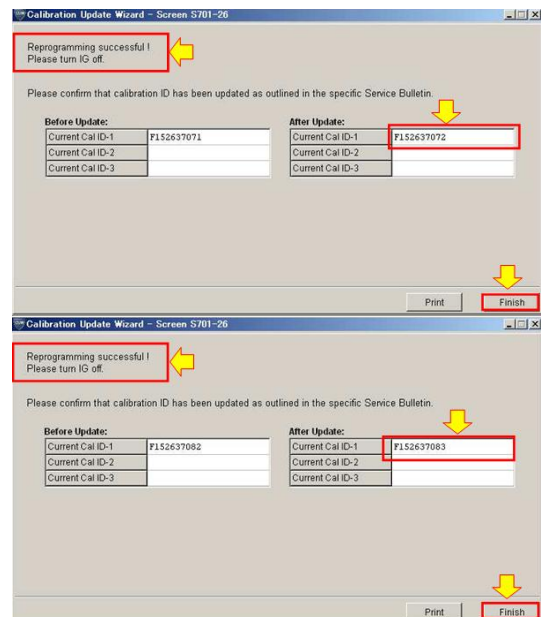
- 16.** Turn on the ignition switch to the “ON” position and click "Next."



- 17.** Make sure that the message “Reprogramming successful! Please turn IG off.” appears on the screen, and that the correct New Cal ID is selected. Click “Finish” and turn the ignition switch to the “OFF” position.

Diesel New Cal ID F152637072

Hybrid New Cal ID F152637083



S A F E T Y R E C A L L

CLEARING DTC'S AFTER REPROGRAMMING

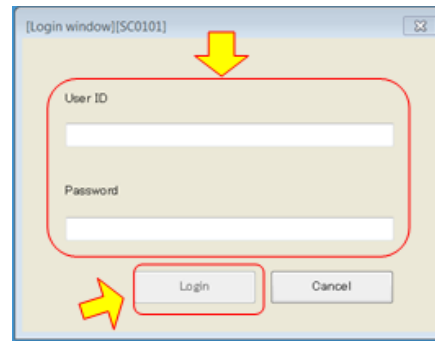
A diagnostic trouble code for a communication error may be stored in the VCS ECU and the HV ECU during reprogramming of the ABS module. Be sure to clear any diagnostic trouble codes using the Hino Diagnostic Explorer II (Hino DX2).

1. Locate the “HinoDX2.exe” icon on the computer Desktop and double-click it to open the program.

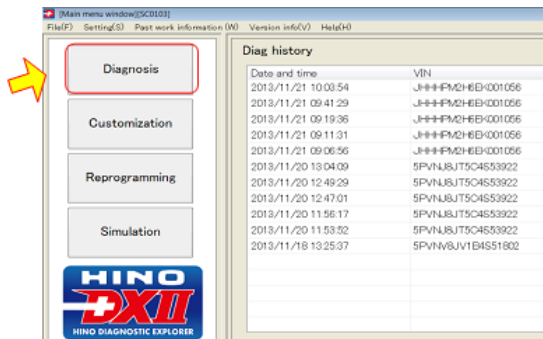


2. Sign onto the DXII program using your User ID and Password established at the time the TSM installed the program.

Click “Login.”



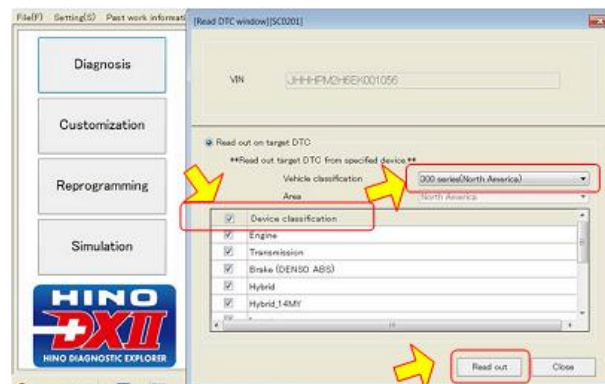
3. To erase all fault codes, at the DXII Main Menu select “Diagnosis.”



4. In the drop-down select “300 Series (North America).”

Put a check mark in the “Device Classification” box to select all the control modules on the vehicle.

Click “Read Out” to read all fault codes in all control modules.

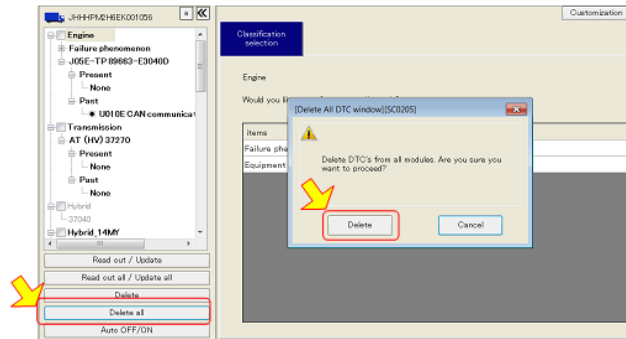


S A F E T Y R E C A L L

NOTE: The left pane of the screen will display all control modules with Present and Past faults. It is not necessary to record any faults at this time, but all faults must be erased entirely.

5. Click the “Delete All” button as shown on the right then click the “Delete” button when prompted.

Repeat once again to completely erase all past faults.



FINAL INSPECTION PROCEDURE:

1. To complete this Recall Campaign, review the bulletin and confirm the following:
 - Turn the ignition switch to the “OFF” position, and then to the “ON” position. Verify that the red “BRAKE” warning lamp turns on for three seconds and then turns off.

Claim Application:

**** Reimbursable in accordance within the terms and policies of the Hino Truck limited warranties.***

ABS ECU Reprogramming:

- a) Campaign No: A9940
- b) Labor charge: 0.5 Hr.
- c) Warranty code: 88611
- d) Trouble Code: 98
- e) Operation code: 88650AOT
- f) Original failed part: 9999999999